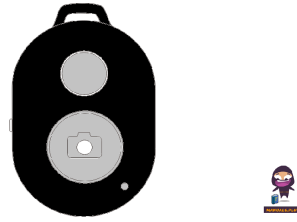


FANCIER BT1818 Bluetooth Remote Control



FANCIER BT1818 Bluetooth Remote Control User Manual

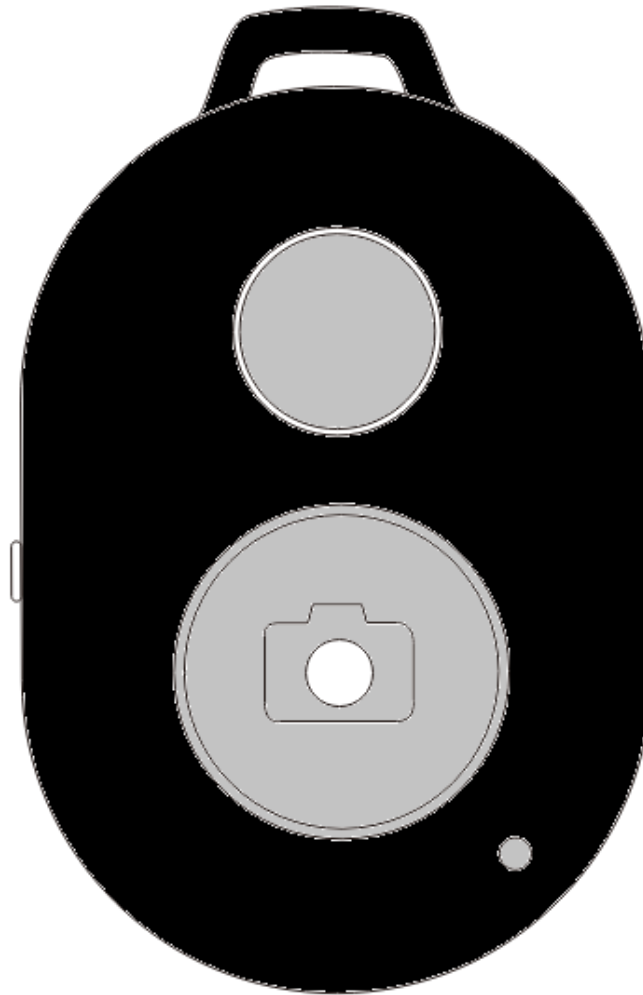
[Home](#) » [FANCIER](#) » FANCIER BT1818 Bluetooth Remote Control User Manual 

Contents

- [1 FANCIER BT1818 Bluetooth Remote Control](#)
- [2 Product Usage Instructions](#)
- [3 FAQ](#)
- [4 Product Illustration](#)
- [5 Specifications](#)
- [6 FCC STATEMENT](#)
- [7 Documents / Resources](#)
 - [7.1 References](#)
- [8 Related Posts](#)



FANCIER BT1818 Bluetooth Remote Control



Product Usage Instructions

Pairing the Remote Control

To use the PMN Bluetooth Remote Control, you need to pair it with your device. Follow these steps:

1. Turn on the remote control by pressing the power button.
2. Enable Bluetooth on your device and search for available devices.
3. Select "PMN Remote Control" from the list of available devices to pair.
4. Once paired, the LED indicator on the remote control will stop blinking.

Using the Remote Control

After pairing, you can use the remote control to perform various functions on your device. Here are some common functions:

- Play/Pause: Press the play/pause button to control media playback.
- Volume Control: Use the volume buttons to adjust the volume.
- Navigation: Navigate through menus using the directional buttons.

Changing the Battery

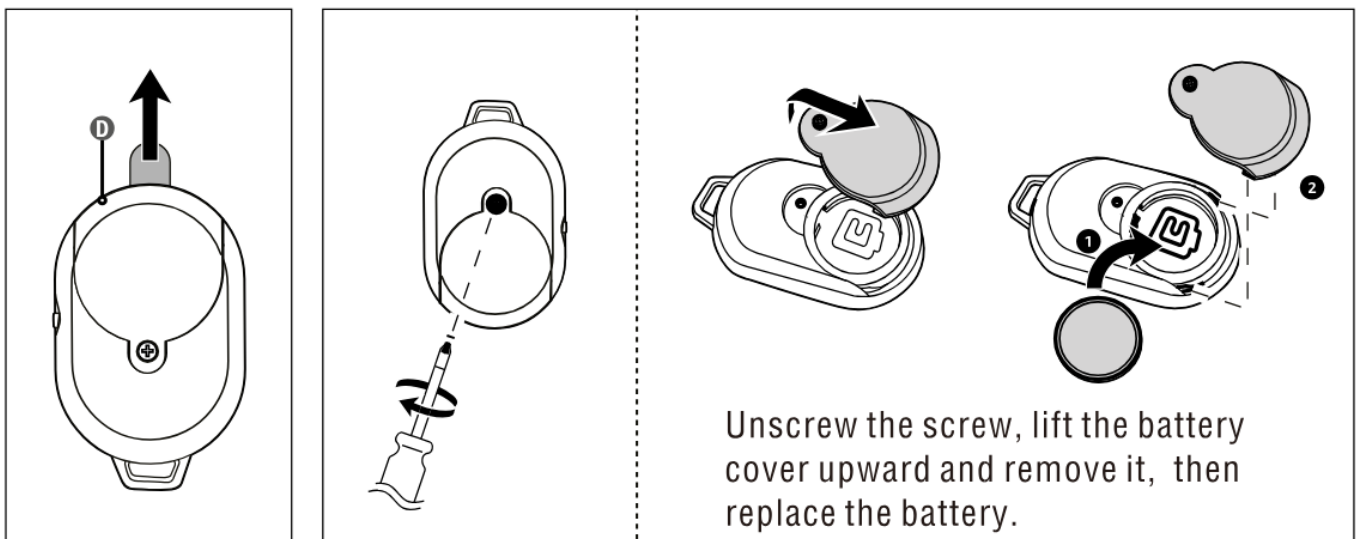
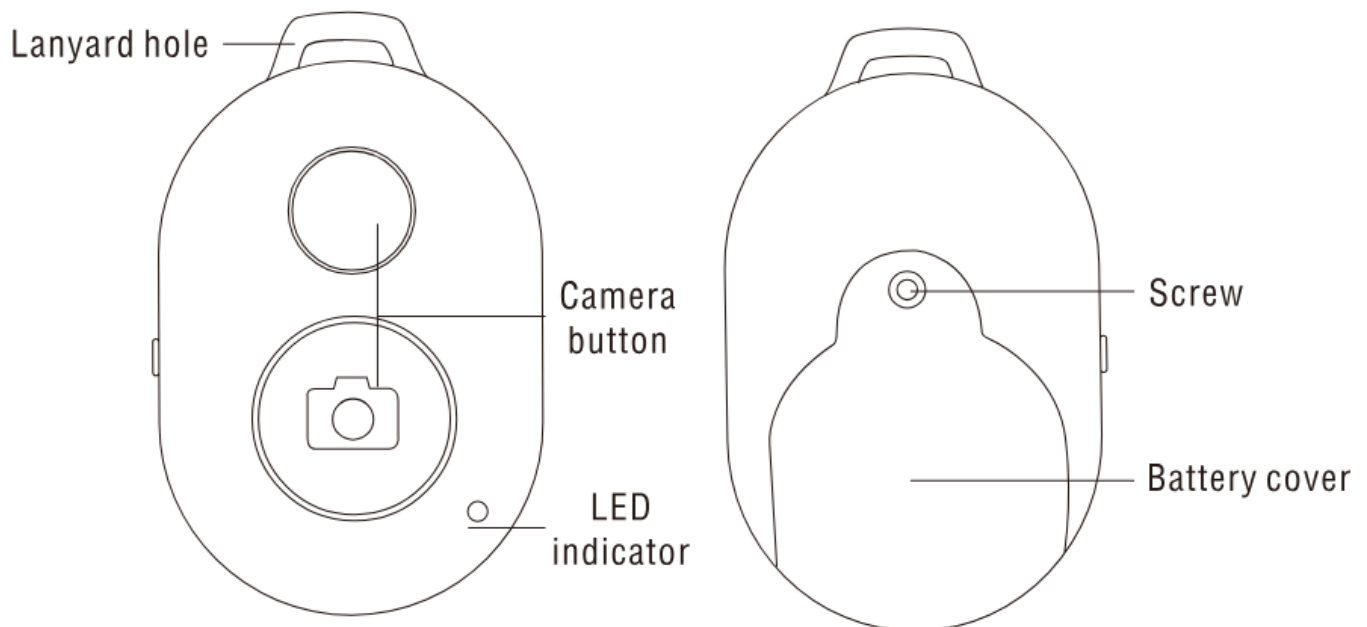
If the remote control stops working, it may be time to change the battery. Follow these steps:

1. Locate the battery compartment on the back of the remote control.
2. Open the compartment and remove the old battery.
3. Insert a new CR2032 coin cell battery with the correct polarity.
4. Close the compartment securely.

FAQ

- **Q:** How do I know if the remote control is paired successfully?
 - **A:** When paired successfully, the LED indicator on the remote control will stop blinking.
- **Q:** Can I use the remote control with multiple devices?
 - **A:** The PMN Bluetooth Remote Control can be paired with multiple devices, but it can only be connected to one device at a time.

Product Illustration



Specifications

- **Bluetooth chip:** YC1089
- **Bluetooth version:** Bluetooth 5.0
- **Transmit frequency:** 2402-2480MHz
- **Working voltage:** 3V
- **Battery:** CR2032
- **Transmission distance:** About 10M
- **Android System:** 4.2.2 or up
- **ios System:** 6.0 or up

FCC STATEMENT

This equipment has been tested and found to comply with the limits for a Class B digital device, pursuant to part 15 of the FCC Rules. These limits are designed to provide reasonable protection against harmful interference in a residential installation. This equipment generates, uses and can radiate radio frequency energy and, if not installed and used in accordance with the instructions, may cause harmful interference to radio communications. However, there is no guarantee that interference will not occur in a particular installation. If this equipment does cause harmful interference to radio or television reception, which can be determined by turning the equipment off and on, the user is encouraged to try to correct the interference by one or more of the following measures:

- Reorient or relocate the receiving antenna.
- Increase the separation between the equipment and receiver.
- Connect the equipment into an outlet on a circuit different from that to which the receiver is connected.
- Consult the dealer or an experienced radio/TV technician for help.

Caution: Any changes or modifications to this device not explicitly approved by manufacturer could void your authority to operate this equipment.

This device complies with part 15 of the FCC Rules. Operation is subject to the following two conditions:

1. This device may not cause harmful interference
2. This device must accept any interference received, including interference that may cause undesired operation.

RF Exposure Information

- The device has been evaluated to meet general RF exposure requirement.
- The device can be used in 0mm exposure condition, compliance with exposure requirements.

ISED Statement:

This device contains licence-exempt transmitter(s)/receiver(s) that comply with Innovation, Science and Economic Development Canada's licence-exempt RSS(s). Operation is subject to the following two conditions:

1. This device may not cause interference.
2. This device must accept any interference, including interference that may cause undesired operation of the device.

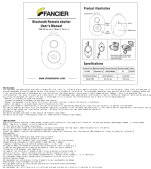
The digital apparatus complies with Canadian CAN ICES-3 (B)/NMB-3(B).

This device meets the exemption from the routine evaluation limits in section 2.5 of RSS 102 and compliance with RSS 102 RF exposure, users can obtain Canadian information on RF exposure and compliance.

This equipment complies with Canada radiation exposure limits set forth for an uncontrolled environment.

This equipment should be installed and operated with minimum distance 0cm between the radiator & your body.

Documents / Resources

	FANCIER BT1818 Bluetooth Remote Control [pdf] User Manual BT1818, BT1818 Bluetooth Remote Control, Bluetooth Remote Control, Remote Control, Control
---	---

References

- [User Manual](#)

[Manuals+](#), [Privacy Policy](#)

This website is an independent publication and is neither affiliated with nor endorsed by any of the trademark owners. The "Bluetooth®" word mark and logos are registered trademarks owned by Bluetooth SIG, Inc. The "Wi-Fi®" word mark and logos are registered trademarks owned by the Wi-Fi Alliance. Any use of these marks on this website does not imply any affiliation with or endorsement.