



FANATEC P-BM-R Podium Button Module Rally User Guide

[Home](#) » [FANATEC](#) » FANATEC P-BM-R Podium Button Module Rally User Guide 

FANATEC[®]

PODIUM

BUTTON MODULE RALLY

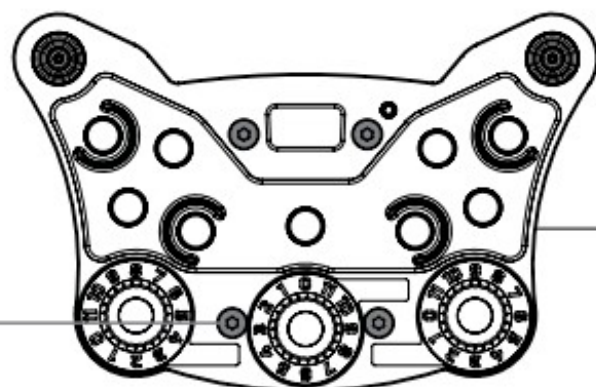


Quick Guide

Contents

- 1 PACKAGE CONTENT**
- 2 GETTING STARTED**
- 3 RIM ATTACHMENT**
- 4 FIRMWARE UPDATE**
- 5 CENTRE CALIBRATION**
- 6 MODES**
- 7 SHIFTER CALIBRATION**
- 8 TUNING OPTIONS**
- 9 BUTTON MAPPING**
- 10 SUPPORT**
- 11 Documents /
Resources**
 - 11.1 References**

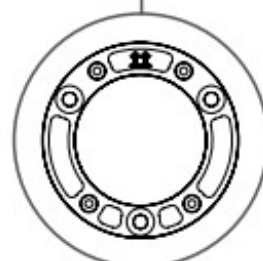
PACKAGE CONTENT



a 1x Podium Button Module Rally



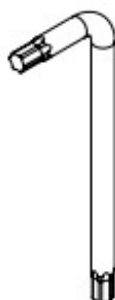
b 4x



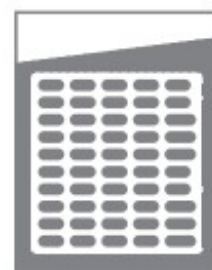
c 1x



d 11x Backlit Button Inserts



e 1x Torx T20



f 1x Sticker Set



GETTING STARTED



VIDEO
MANUAL

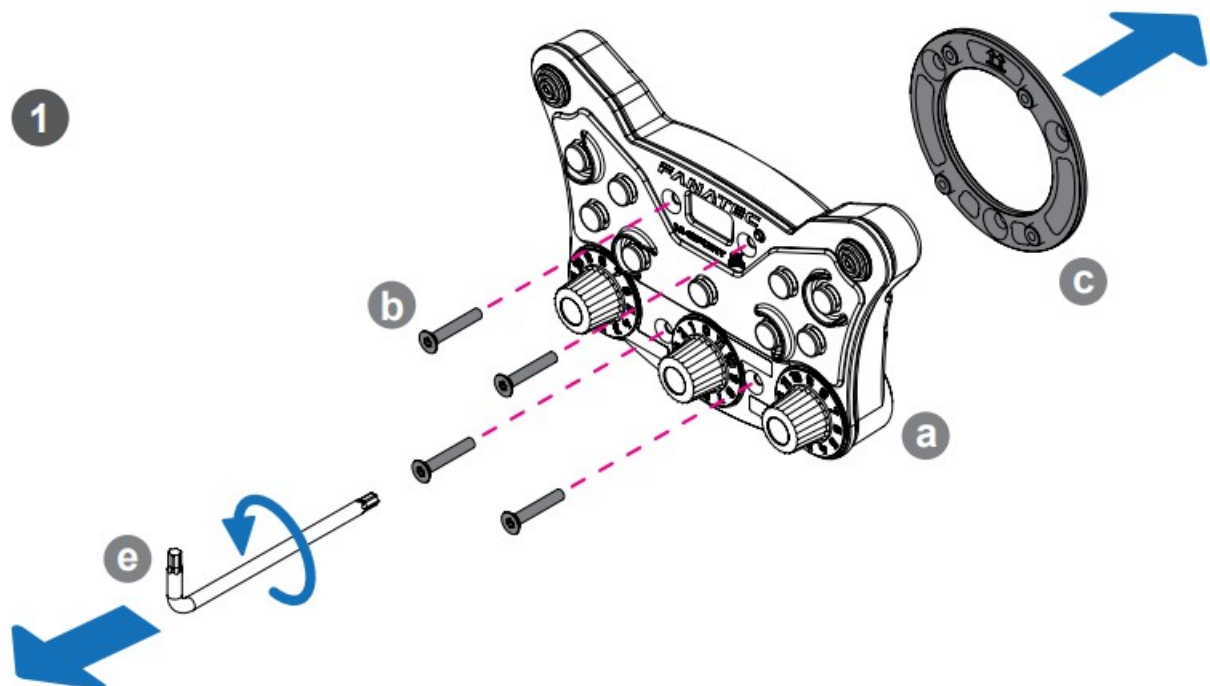


[Fanatec.com/QR/P-BM-R](https://fanatec.com/QR/P-BM-R)

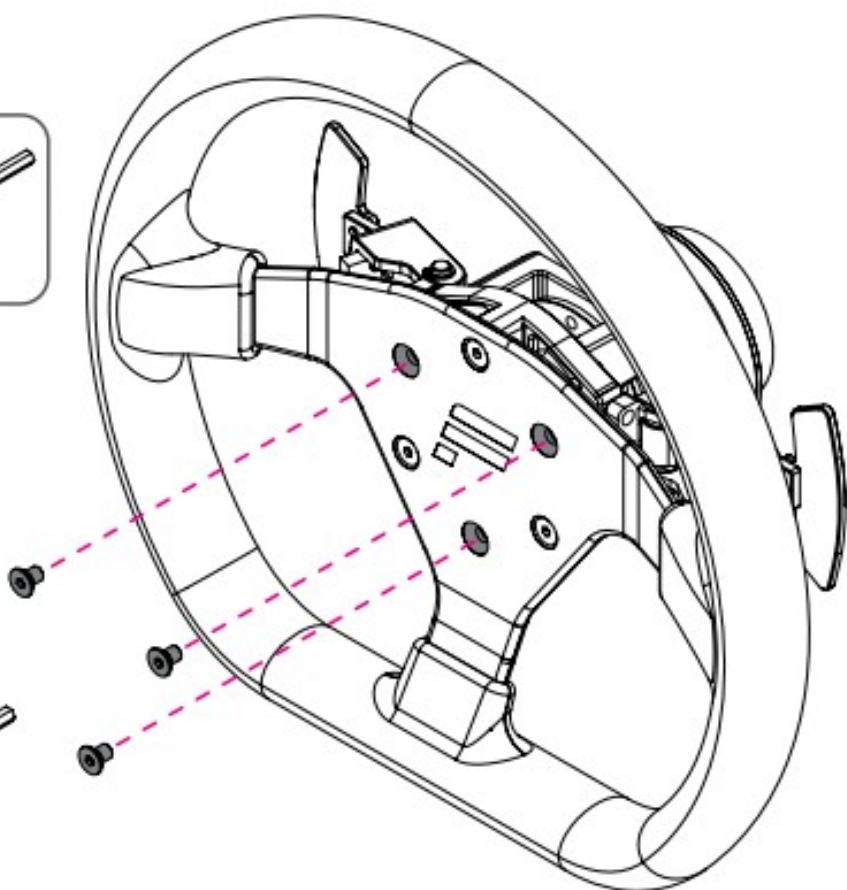
[Fanatec.com/app](https://fanatec.com/app)

[Fanatec.](https://fanatec.com)

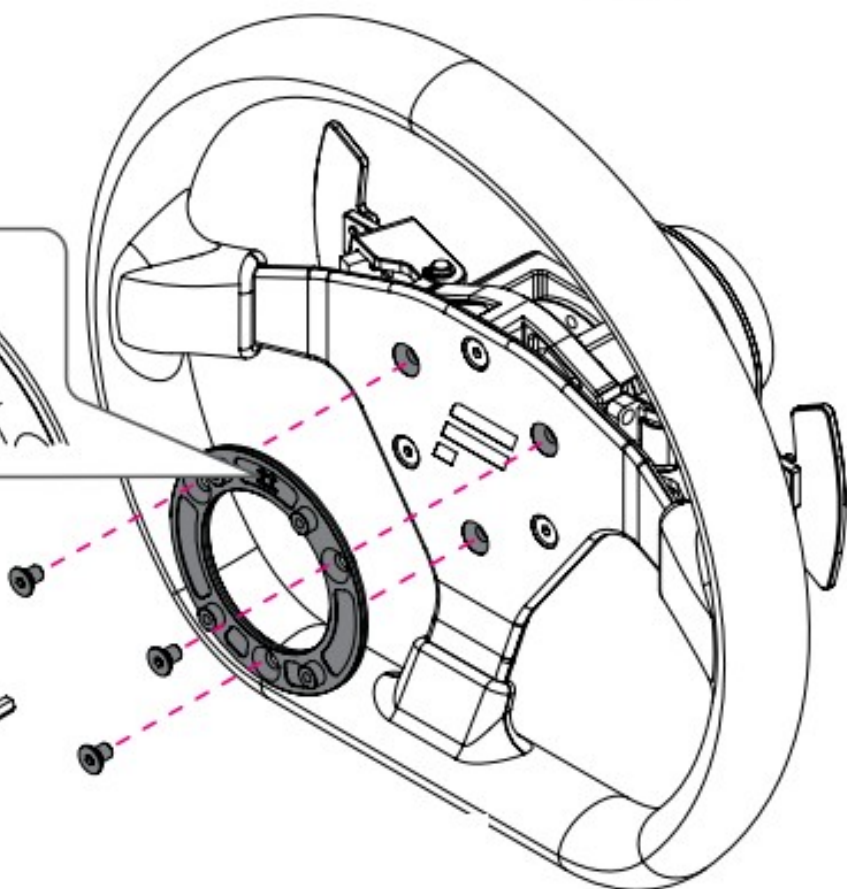
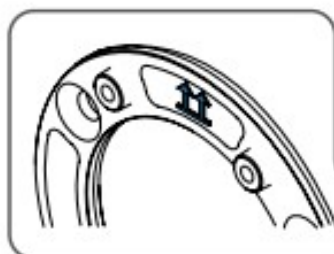
RIM ATTACHMENT



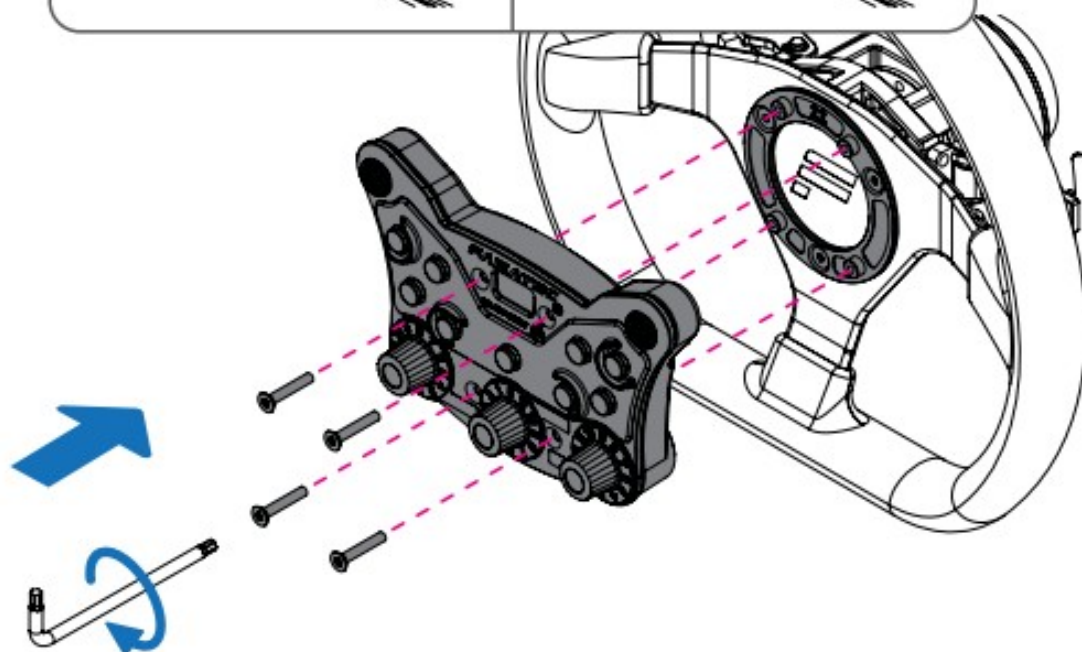
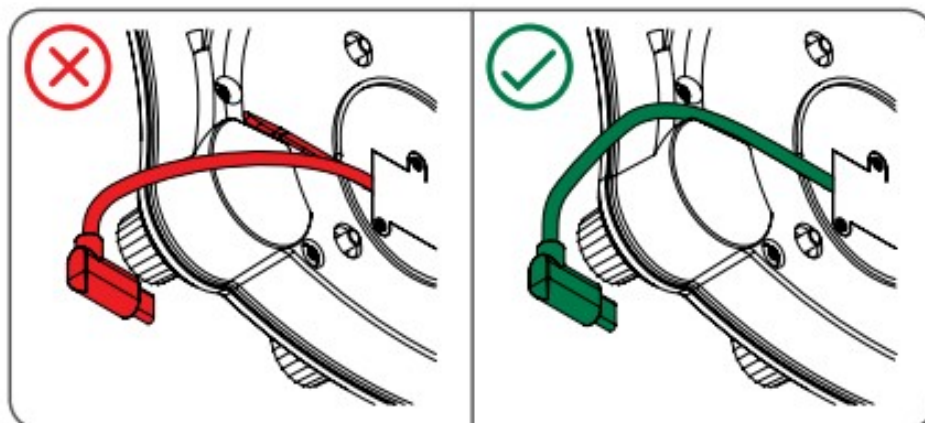
2



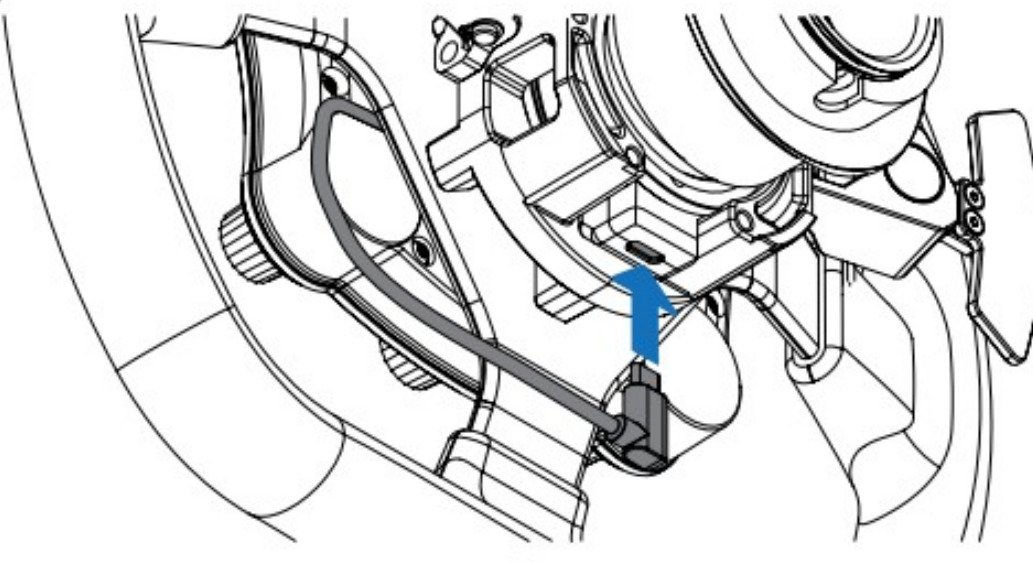
3



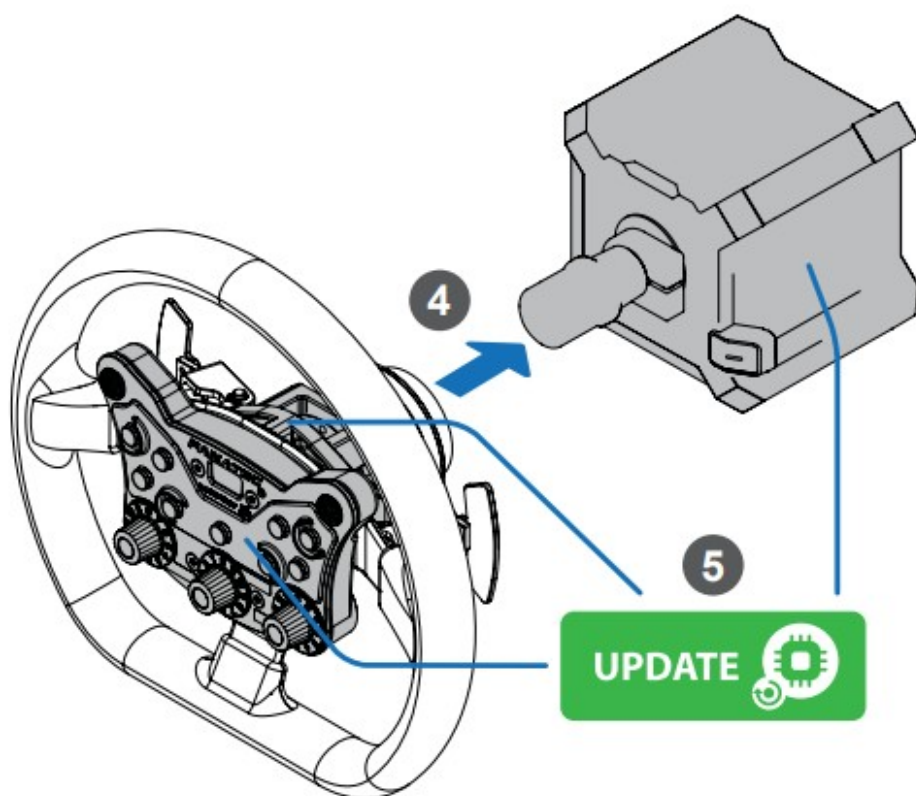
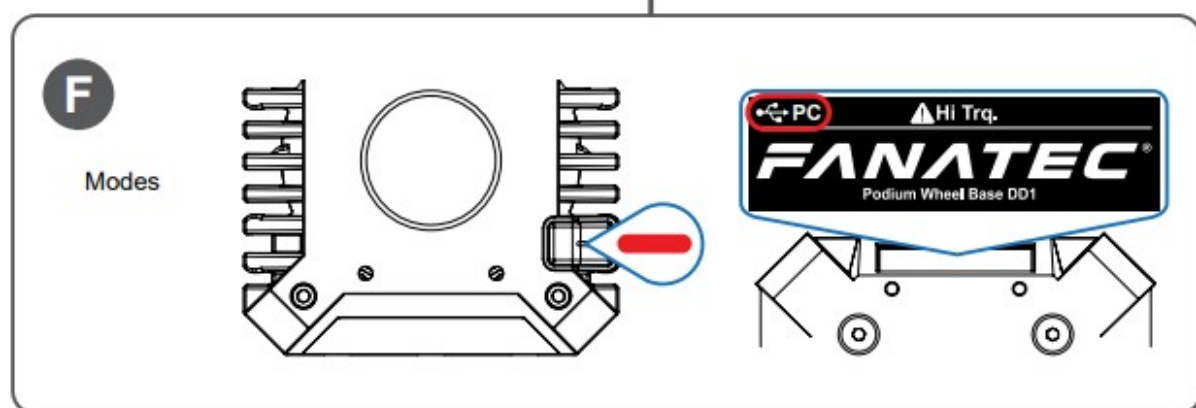
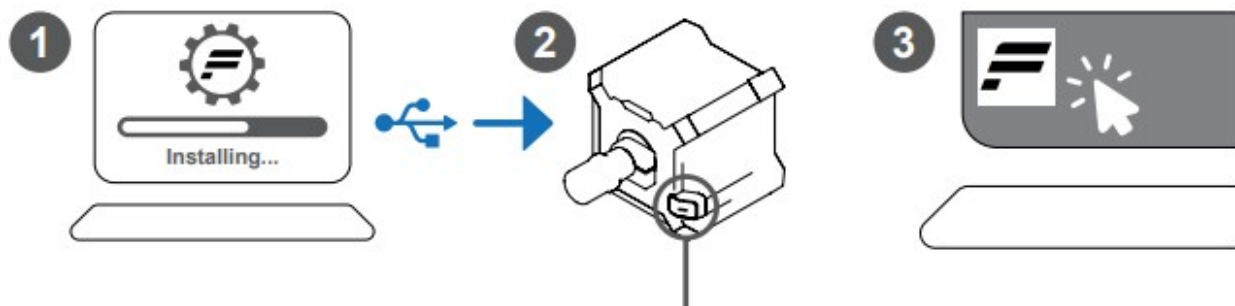
4



5



FIRMWARE UPDATE

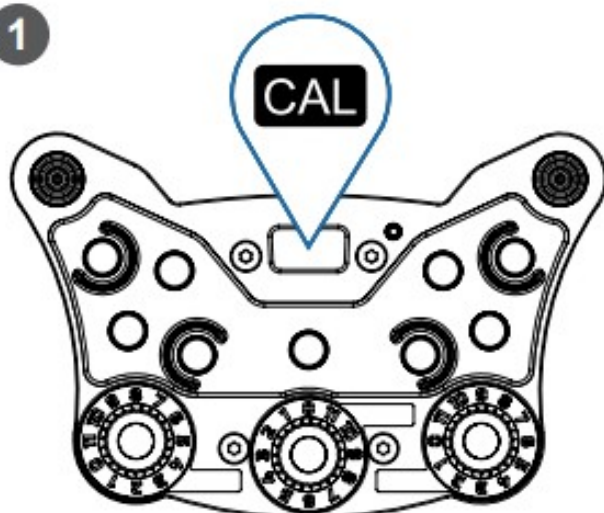
D

[Fanatec.com/manuals](https://www.fanatec.com/manuals)

CENTRE CALIBRATION



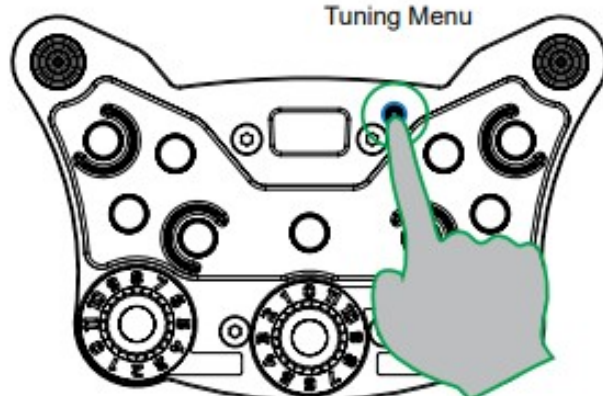
1



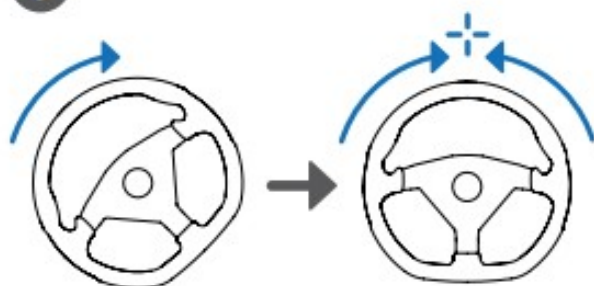
2



Tuning Menu



3



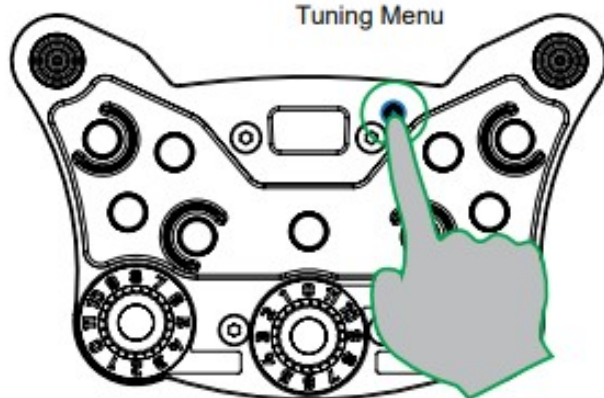
4

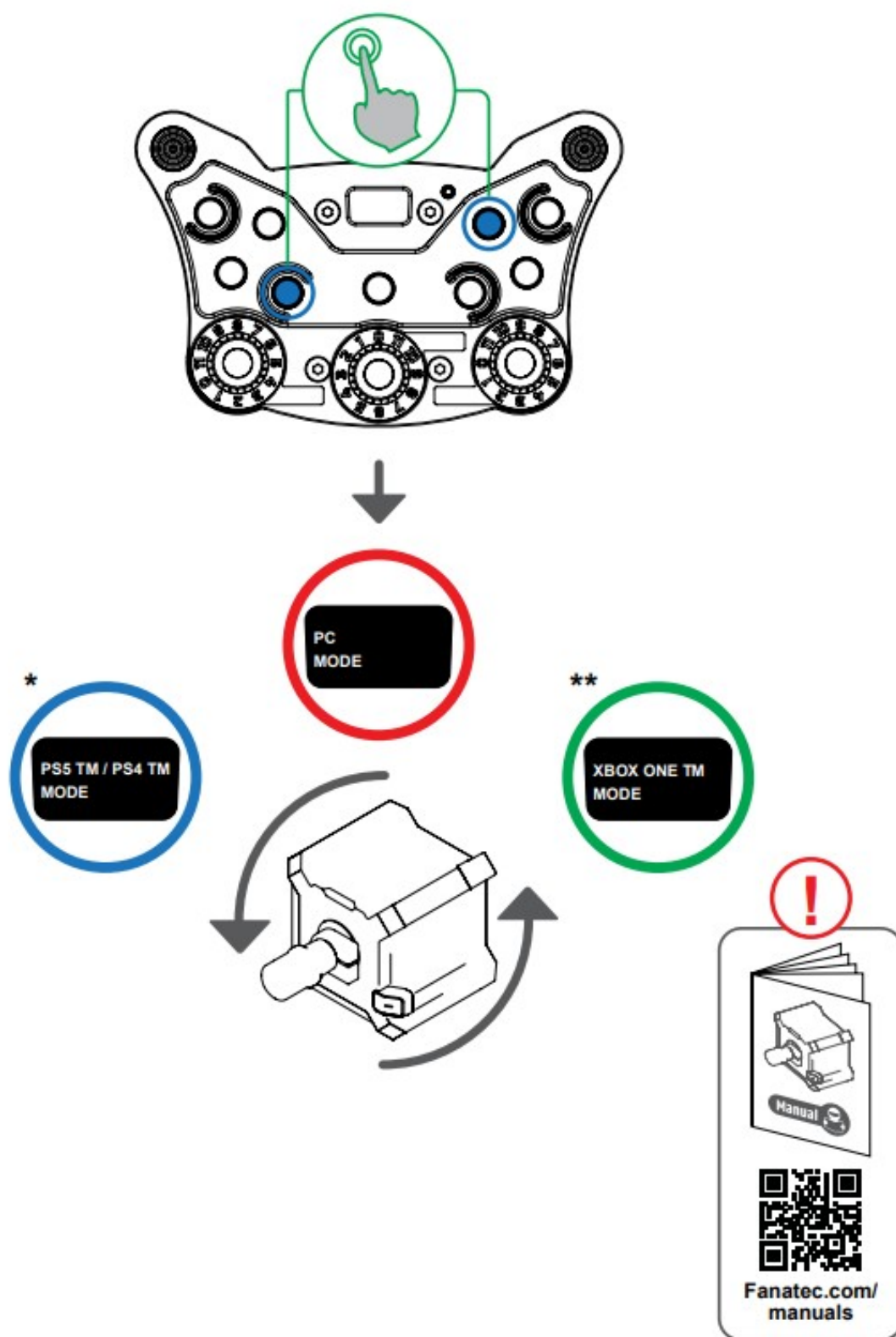


5



Tuning Menu



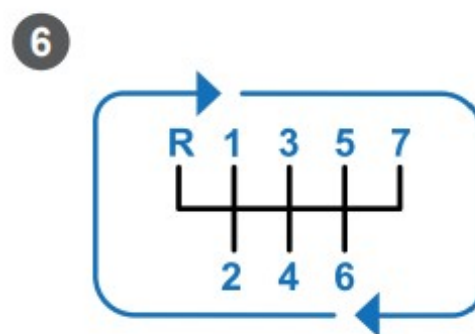
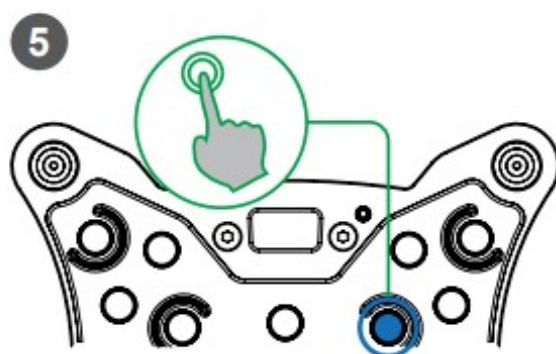
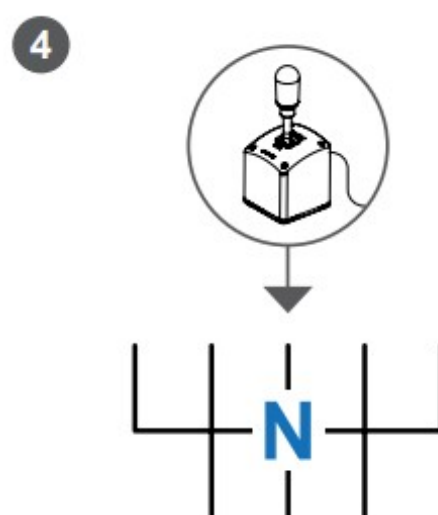
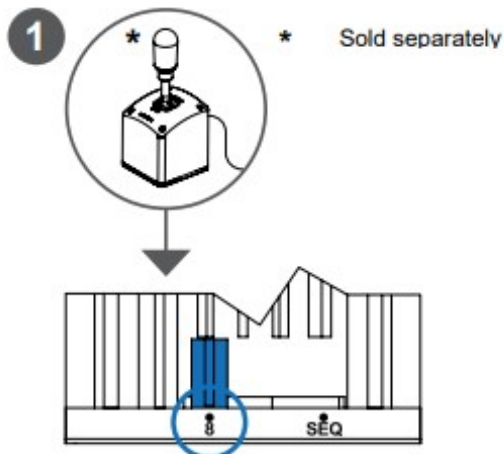





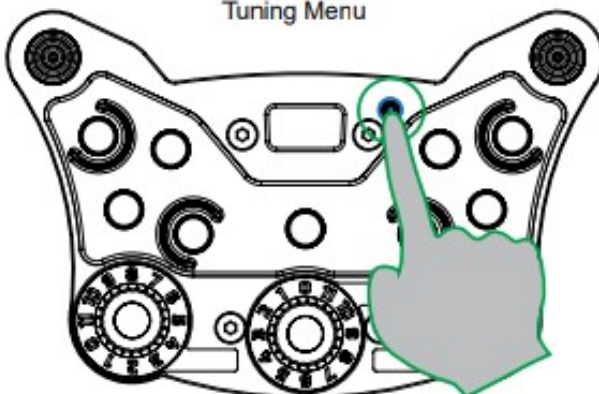




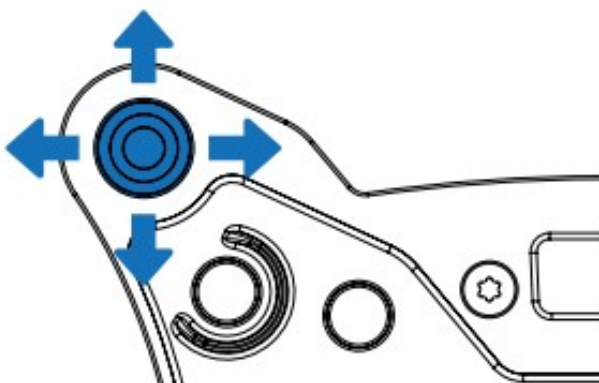

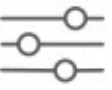

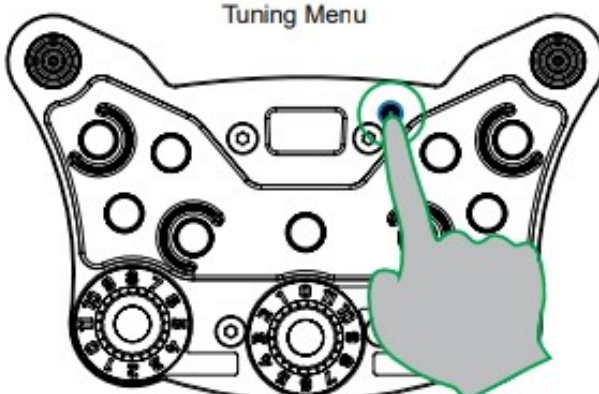
[Fanatec.com/manuals](https://www.fanatec.com/manuals)

* Wheel base dependent

* * Wheel hub dependent

SHIFTER CALIBRATION

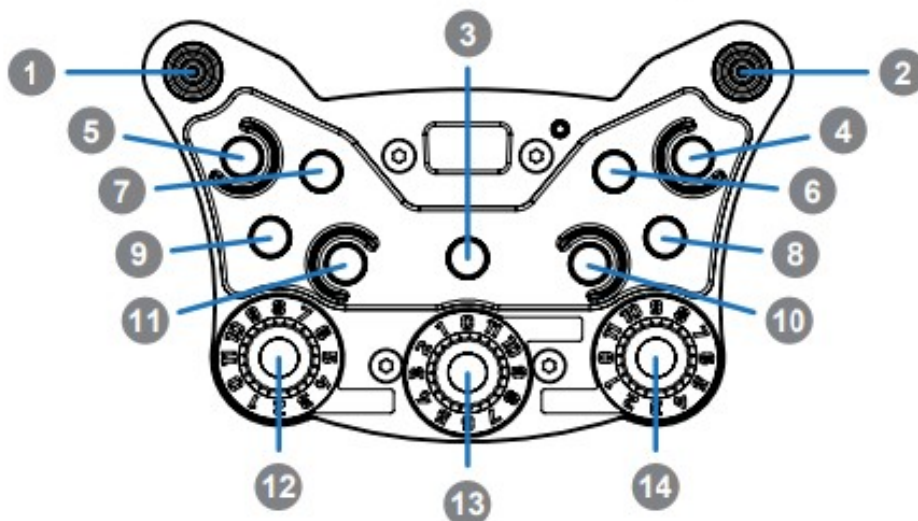
G**TUNING OPTIONS**





- 1   Enter; 
- Tuning Menu
- 
- 2    
- 
- 3   Exit; 
- Tuning Menu
- 





#	PC	PlayStation®	Xbox
1	↑, ←, ↓, → ● → 25	↑, ←, ↓, → ● → X	↑, ←, ↓, → ● → A
2	↑: 100, ←: 12, ↓: 99, →: 11 ● → 26	↑: *GSB, ←: L3, ↓: *GSB, →: R3 ● → X	↑: *GSB, ←: *GSB, ↓: *GSB, →: *GSB ● → A
3	22	PS	GUIDE
4	3	O	B
5	4	△	Y
6	7	R2	*GSB
7	8	L2	*GSB
8	2	X	A
9	1	□	X
10	10	≡	MENU
11	9	↖/↗	VIEW
12	ENC: 37 / 38 MPS Pulse / Constant: 37 - 48	ENC: *GSB / *GSB MPS Pulse / Constant: *GSB / *GSB	
13	ENC: 65 / 66 MPS Pulse / Constant: 65 - 76	ENC: *GSB / *GSB MPS Pulse / Constant: *GSB / *GSB	
14	ENC: 49 / 50 MPS Pulse / Constant: 49 - 60	ENC: *GSB / *GSB MPS Pulse / Constant: *GSB / *GSB	



 <p>VIDEO MANUAL</p> 	 	
Fanatec.com/QR/P-BM-R	Fanatec.com/app	Fanatec.com/si

The product warranty is provided by Endor AG. Refer to the included warranty sheet as well as the terms & conditions of Endor AG on fanatec.com.

This device complies with part 15 of the FCC rules. The operation of this device is subject to the following two conditions:

- This device may not cause harmful interference, and must accept any interference received, including interference that may cause undesired operation.
- This device was not modified differently than described explicitly in this user manual.

NOTE: This device was tested and approved to the limitations for class B of digital devices according to part 15 of the FCC rules. This limitation should ensure an adequate protection against harmful interferences in residential areas. However, a warranty for the non-recurring of interferences is not assumed.

Do not modify the device differently than explicitly described in the product-related user manual. Nevertheless, if you do modify the device differently than explicitly described in the product-related manual, you can be determined to stop the operation of the device.



Manufactured by Endor AG under licence from M-Sport Ltd. Images, logos © 2023 M-Sport is a trademark of M-Sport Ltd. All rights reserved.

Manufactured and distributed by



Fanatec® is a registered trademark of Endor AG
 Designed and developed by Endor AG in Germany
 E.ON-Allee 3 – 84036 Landshut – Germany
 EU: 00800 0 FANATEC or +49 (871) 9221 -122
 US/CANADA: 011 800 0 FANATEC or +49 (871) 9221 -122

AUSTRALIA: 00800 0 FANATEC or +49 (871) 9221 -122

JAPAN: +81 306 7172 -719

Email: info.webshop@fanatec.com

Website: www.fanatec.com – www.endor.ag

Made in China

FANATEC®

Importers:

Imported and distributed by Endor America LLC

8200 Wilshire Blvd. Suite 200 – Beverly Hills CA 90211 – USA

Telephone: +1 321-655-3524

Email: webshop@fanatec.com

Website: www.fanatec.com – www.endor.ag

Endor Australia Pty Ltd

3 Staley Street, California Gully, Vic, 3556 – Australia

Telephone: 661 453 979 40

Email: webshop@fanatec.com

Website: www.fanatec.com – www.endor.ag

Endor Japan Kabushikigaisya

E5001 3-13-1, Harumi Cyuo-ku Tokyo-to


Tokyo 104-0053 – Japan

Telephone: 03-6717-2719

Email: webshop@fanatec.com

Website: www.fanatec.com – www.endor.ag

Documents / Resources

	FANATEC P-BM-R Podium Button Module Rally [pdf] User Guide P-BM-R Podium Button Module Rally, P-BM-R, Podium Button Module Rally, Button Module Rally, Module Rally, Rally, Rally P-BM-R, Podium Rally
---	---

References

- [Driver | Fanatec](#)
- [Manuals | Fanatec](#)
- [User Manual](#)