



## FALCON V2 23 WiFi Reversing Camera User Guide

[Home](#) » [Falcon](#) » FALCON V2 23 WiFi Reversing Camera User Guide 

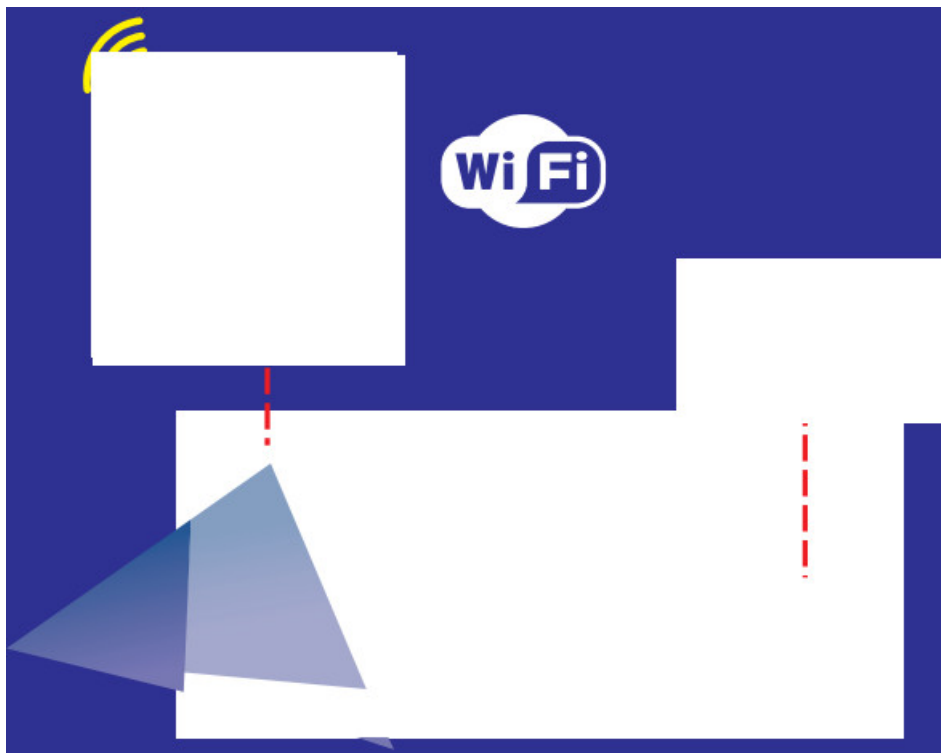


WiFi Reversing Camera  
User Guide

### Contents

- [1 V2 23 WiFi Reversing Camera](#)
- [2 Charging the Camera](#)
- [3 Using the Camera with an Apple device](#)
- [4 Using the Camera with an Android device](#)
- [5 Documents / Resources](#)

**V2 23 WiFi Reversing Camera**



Thank you for purchasing the Falcon WiFi Reversing Camera.

This user guide will tell you how to correctly use the WiFi Camera and and install the necessary app on your phone / tablet / Falcon Satellite navigation system

Please read the manual carefully before using. We hope you enjoy this system.

**Compatible with:**

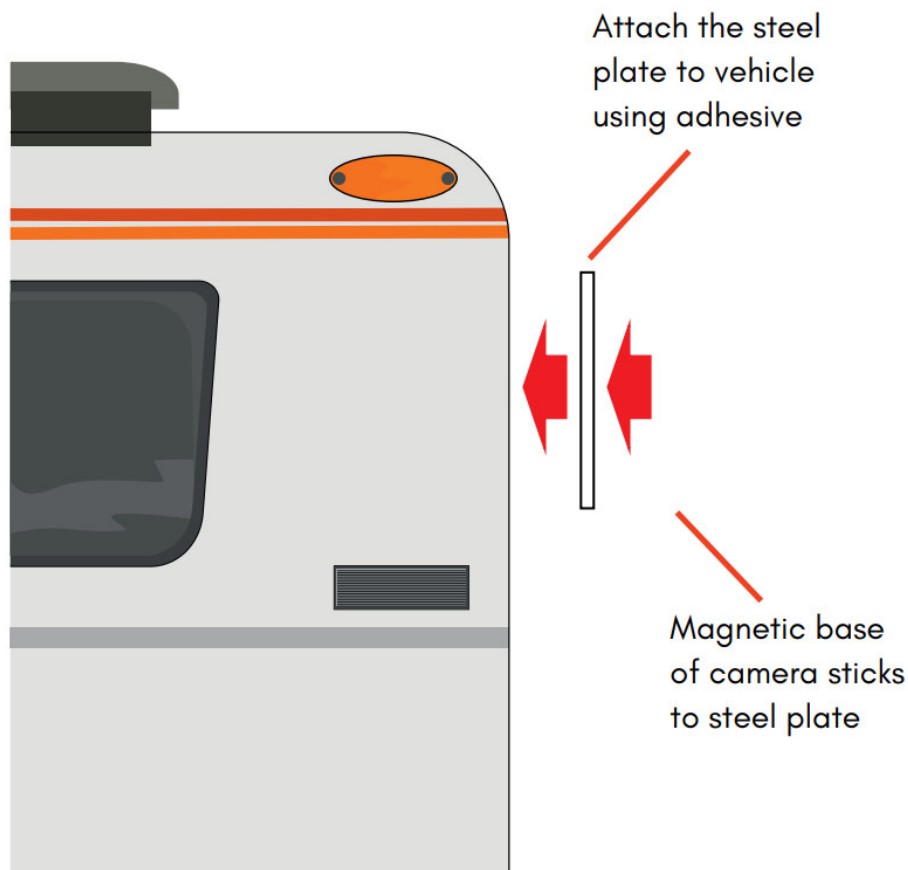


### **Attaching the Camera to your Motorhome or Caravan**

The base of the camera is magnetic, if you have a suitable steel surface you can attach the camera directly to that.

If you don't have a suitable steel surface you can attach the included white steel plate to your vehicle using the included adhesive and then attach the camera to that.

Be sure to apply a thick layer of adhesive and allow at least 24 hours for it to dry before attaching the camera.



## Charging the Camera

To charge your camera pull the orange cover on the rear of the camera to reveal the charging socket and plug the charging lead in.

Connect the other end of the charge lead to the included cigarette lighter adapter or a USB mobile phone adapter.

The camera should reach a full charge from flat in approximately 4.5 hours.

The LED on the camera is red when the camera is charging and switches off when the camera is fully charged.

After charging be sure to refit the orange rubber cover to the charge socket to prevent water ingress.

## Using the Camera with an Apple device

### Step 1:

Search the App Store for "SafetyEye" and install the app

### Step 2:

Open the app and allow the app permission to access and manage your phone

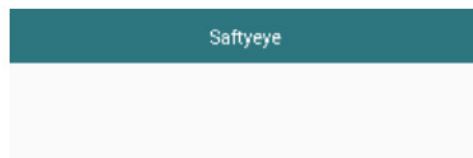
### Step 3:

Turn your camera on using the button on the front, the LED will light up blue when turned on. Select Your Camera on the app.



### Step 4:

Give your device a moment to connect to the camera



Connecting...



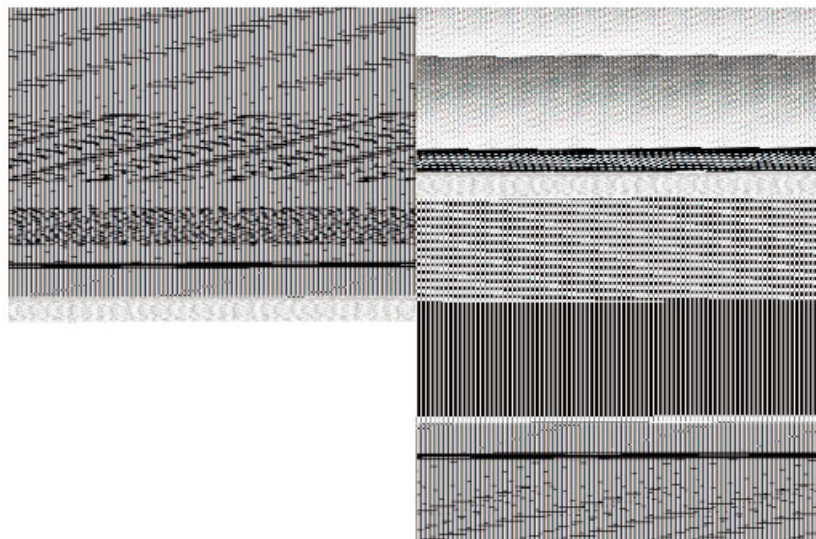
**Step 5:**

Travel with piece of mind you know what is behind you.

## Using the Camera with an Android device

**Step 1:**

Search the Play Store for "SafetyEye" and install the app



**Step 2:**

Open the app and allow the app permission to access and manage your phone

**Step 3:**

Turn your camera on using the button on the front, the LED will light up blue when turned on. Select Your Camera on the app.

**Step 4:**

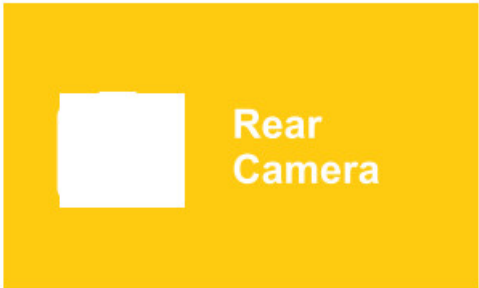
Give your device a moment to connect to the camera

**Step 5:**

Travel with piece of mind you know what is behind you.

**Using the Camera with the Falcon Navi Explorer Sat Nav**

- 1. Press the “Home” button (shown on the right) at the bottom of the screen to return to the main menu if you are not already there.
- 2. Press the button on the camera briefly to turn it on. The LED will light up blue.
- 3. Press the WiFi camera icon (shown on the right).



Press WiFi Setup and the camera will connect and you will see the picture from the camera as shown below.

Press the camera icon to take a snapshot and the folder icon to view saved snapshots.



**Documents / Resources**

	<p><a href="#">FALCON V2 23 WiFi Reversing Camera</a> [pdf] User Guide</p> <p>V2 23 WiFi Reversing Camera, V2 23, WiFi Reversing Camera, Reversing Camera, Camera</p>
--	---