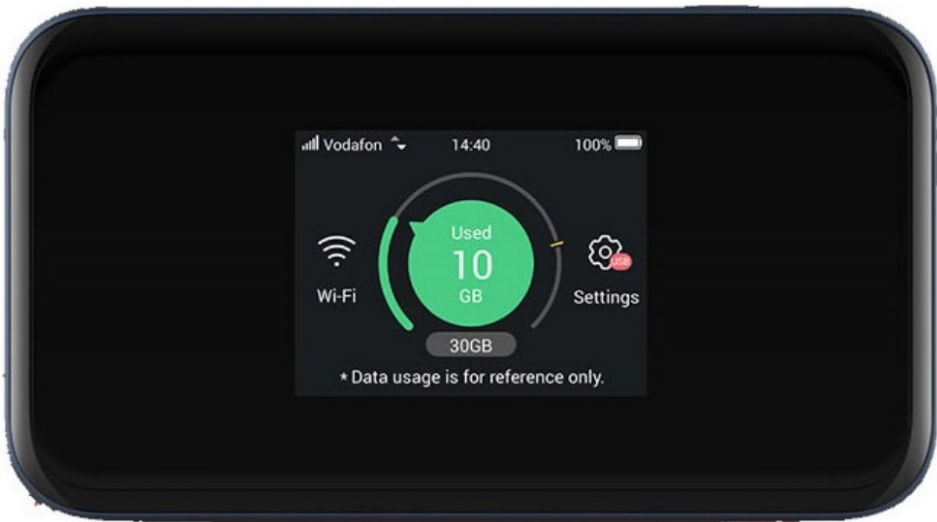




FALCON MU5001 Mobile WiFi Router Review User Manual

[Home](#) » [Falcon](#) » FALCON MU5001 Mobile WiFi Router Review User Manual 

FALCON MU5001 Mobile WiFi Router Review User Manual



Contents

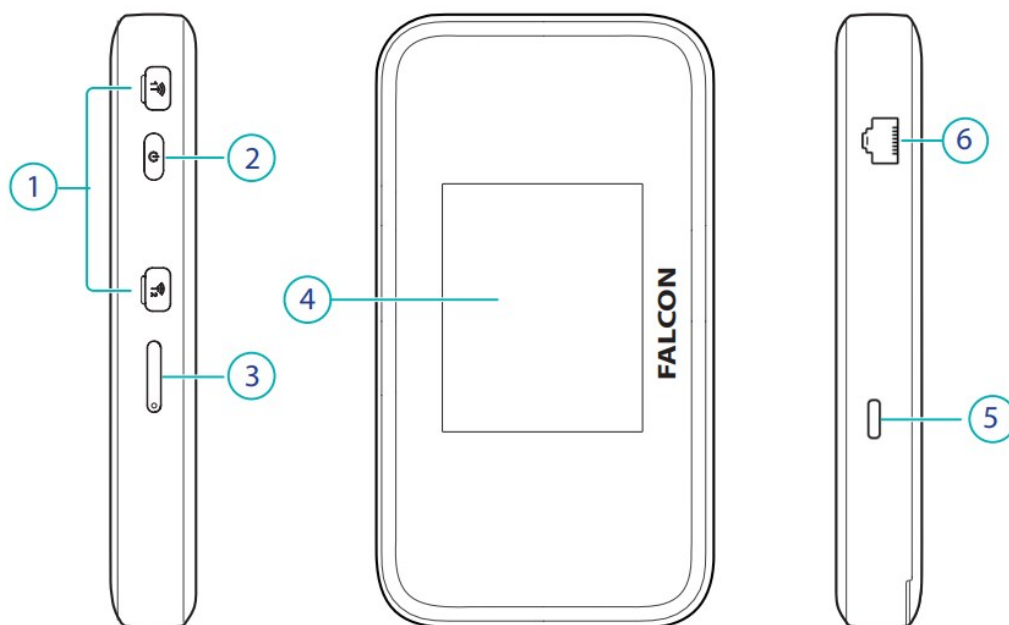
- 1 WHAT'S IN THE BOX
- 2 GETTING FAMILIAR WITH YOUR ROUTER
- 3 HOW TO INSTALL THE BATTERY
- 4 HOW TO INSERT THE NANO-SIM
- 5 TURN YOUR 5G ROUTER ON
- 6 COMPUTER CONNECTION VIA USB TYPE-C
- 7 TOUCH SCREEN ICONS
- 8 START-UP GUIDE: DETAILS REQUIRED
- 9 PC START-UP GUIDE: THE PROCESS
- 10 MOBILE DEVICE START-UP GUIDE: THE PROCESS
- 11 TECHNICAL SPECIFICATION
- 12 TROUBLE SHOOTING
- 13 Documents / Resources
 - 13.1 References
- 14 Related Posts

WHAT'S IN THE BOX



*The item colours and shapes may vary depending on the models.

GETTING FAMILIAR WITH YOUR ROUTER



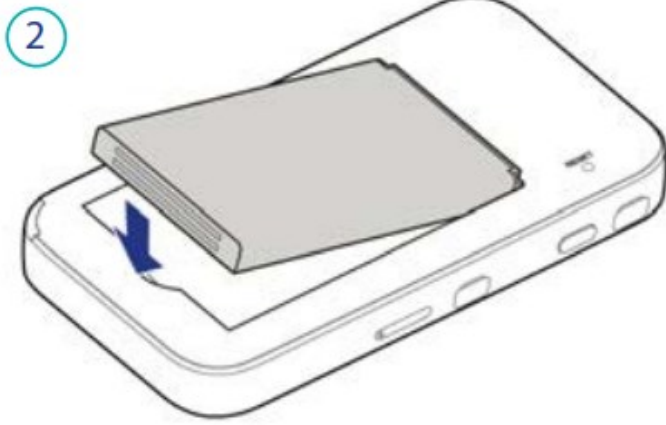
1	External Antenna Ports
2	Power Button
3	Nano SIM Slot
4	Touch Screen
5	Charge/USB type-C jack
6	LAN Port

HOW TO INSTALL THE BATTERY

1. Pull back the cover to open. Note the nail gap on one edge.

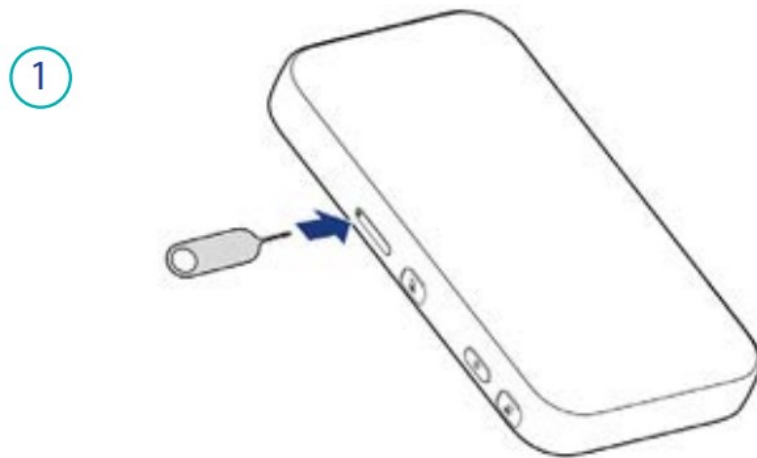


2. Insert the battery (found in box)

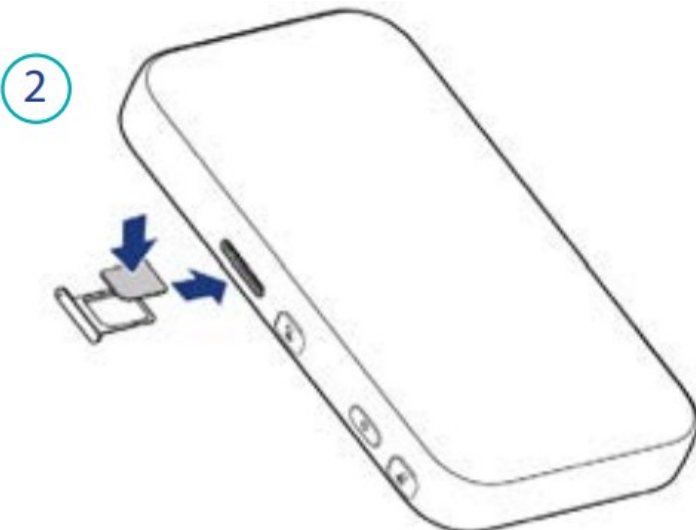


HOW TO INSERT THE NANO-SIM

1. Insert the tip of a tray eject tool into the hole.



2. Pull out the tray and place the nano-SIM on the tray. Slide the tray back in place with the provider logo facing up (device facing screen down).



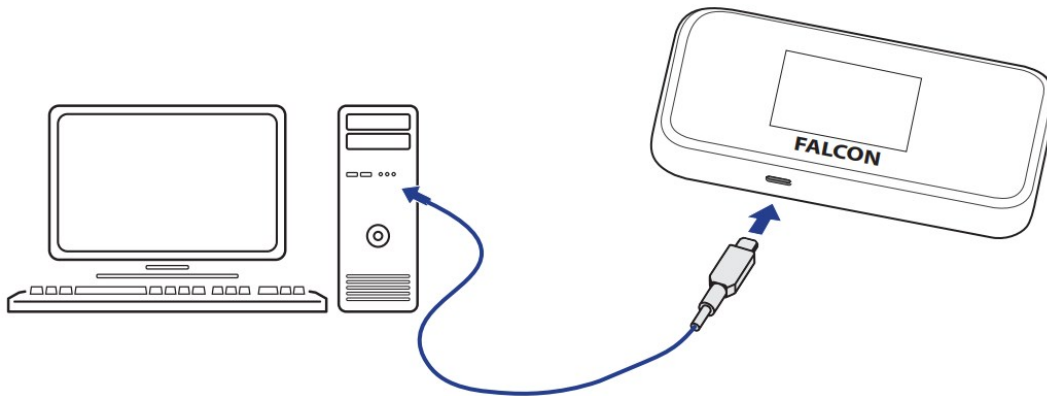
TURN YOUR 5G ROUTER ON

Press and hold the power button until the screen lights up. Once you have setup the device then in future it will connect automatically



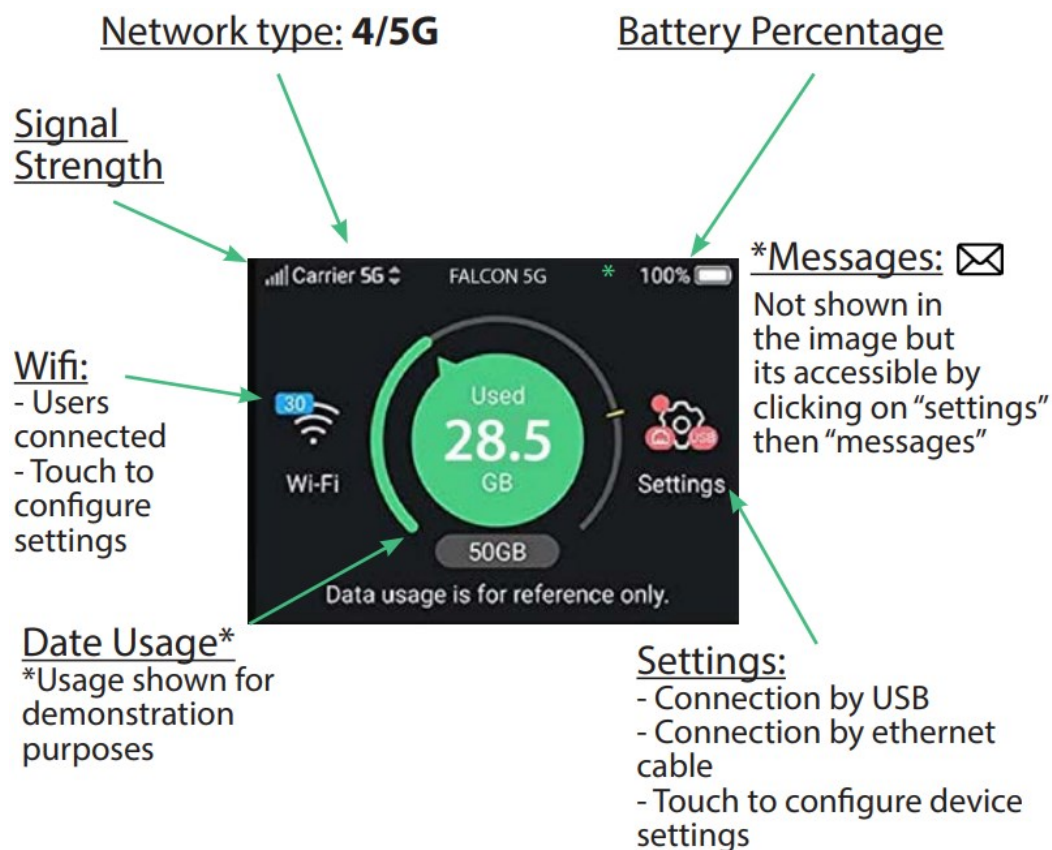
***Note:** If the battery is extremely low, you may be unable to power on the device. Please charge your device first.

COMPUTER CONNECTION VIA USB TYPE-C



USB Type-C cable: Connect the cable to your computer to browse the internet

TOUCH SCREEN ICONS

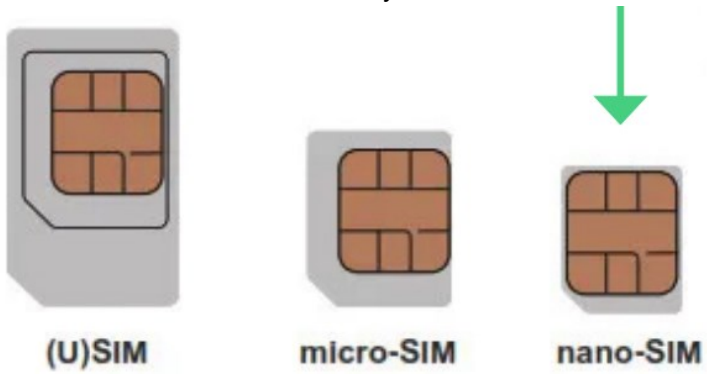


Apply light pressure to the touch screen. Hold for a few second to unlock.

START-UP GUIDE: DETAILS REQUIRED

NANO-SIM

The Router uses a nano-sim only



LOGIN DETAILS

Login details can be located when you start up the device

1. Click on Wifi Symbol

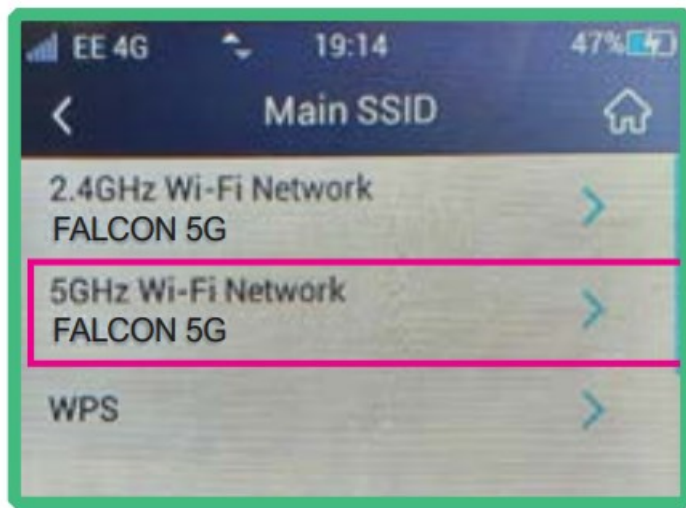


2. Click on Main SSID



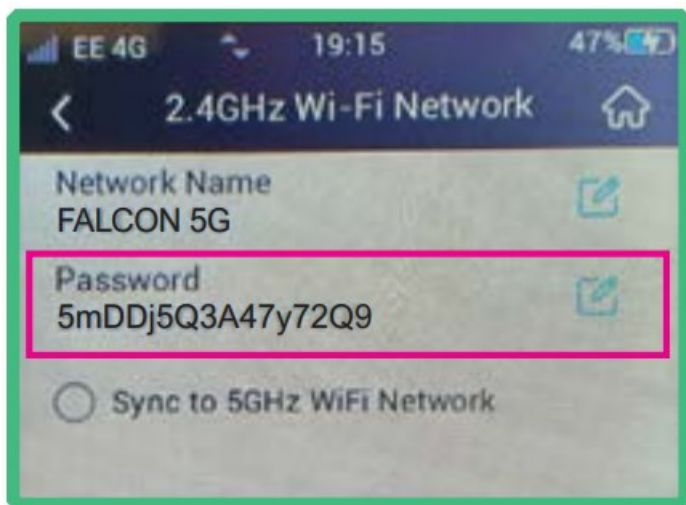
3. Click Falcon 5GHz Wifi

3



4. Enter password into your device

4



*The above password is for demonstration purposes only.

PC START-UP GUIDE: THE PROCESS

1. Place SIM-Card (refer to p7 for more detail).
2. Power on the router (plug it in to ensure a continuous stable powered connection).
3. Use your mobile phone or computer to search and connect to the network: "Falcon 5G" – note there will be two options to connect to, namely "Falcon 5G 2.4Ghz" and "Falcon 5G 5Ghz" . The main difference between the two is that the "Falcon 5G 2.4Ghz" is not as fast as "Falcon 5G 5Ghz" but it has a longer range. Ideally connect to the "Falcon 5G 5Ghz" where possible, for faster speeds. You can also sync the two SSID's as in point 4 on p11.
4. Key in the Wifi key (password): "*****" (located on the screen, refer to p11 for more detail).
5. Wait a few seconds you will be connected to the internet.

MOBILE DEVICE START-UP GUIDE: THE PROCESS

Access the internet by clicking on the QR code

1. Wifi > Main SSID > drag your finger up to reveal the QR code and scan with your smart-phone.

2. Key in the Wifi key (password): “*****” (located on the screen, refer to p11 for more detail).
3. Wait a few seconds you will be connected to the internet.

TECHNICAL SPECIFICATION

Product Dimensions	13.3 x 7.3 x 1.85 cm; 200g
Batteries	1x Li-ION Polymer battery required. (included)
Item model number	MU5001
Colour	Black
Wireless Type	802.11n, 802.11b, 802.11a, 802.11g,802.11ac
Battery (in hours)	8 Hours charge with 8 hours use
Are Batteries Included	Yes
Lithium Battery Energy Content	4500 Milliamp Hours (mAh)
Lithium Battery Packaging	Batteries contained in equipment
Number Of Lithium Ion Cells	1

TROUBLE SHOOTING

Problem	Recommended Solution
The device does not power on.	Ensure the power is turned on at the source. Check the power connector is secured at the base of the router. Test an alternative power source.
Cannot find “Falcon 5G” Wifi network (SSID).	Ensure the device is turned on and in range. Turn the device off for 60 seconds and turn it back on. Do not “reset” at this point.
Connected to the internet but unable to browse.	Ensure you have loaded data on the SIM-Card. Contact your provider to ensure you have data available.
Can the wireless name of the device be customized.	The wireless name can be customized in Wifi settings.

Your SIM-Card will require data in order to connect to the internet

Please read the manual carefully.

If further support is required please contact us United Kingdom enquiries

UK Website: <https://falcontechonology.co.uk/>

European Website : <https://falcontechonology.eu>

Email: support@falcontechonology.co.uk

Telephone: +44 1928 759 239

Germany Enquiries:

Email: info@easyfind24.de

Hotline: +49 2688 988181



Documents / Resources



[FALCON MU5001 Mobile WiFi Router Review](#) [pdf] User Manual
MU5001 Mobile WiFi Router Review, MU5001, Mobile WiFi Router Review, WiFi Router Review
, Router Review, Review

References

- [Falcon Technology – Car, Van, Motorhome, Caravan, Truck](#)
- [Home - Falcon Technology EU](#)