



FALCON RIDGE Polaris RZR XP 4 Turbo Cab Instruction Manual

[Home](#) » [FALCON RIDGE](#) » [FALCON RIDGE Polaris RZR XP 4 Turbo Cab Instruction Manual](#) 



FALCON RIDGE

RIDGE Polaris RZR XP 4 Turbo Cab
Instruction Manual



2515 Bypass Rd. Flemingsburg, KY 41041 606-845-7439
Instructions for Installation and Care of Polaris 2014-2018 RZR4 Soft Door Kit
PO-14RZR4-FC05

Contents

- [1 Polaris RZR XP 4 Turbo Cab](#)
- [2 Cleaning and Storage](#)
- [Recommendations:](#)
- [3 Documents / Resources](#)
- [4 Related Posts](#)

Polaris RZR XP 4 Turbo Cab

CAUTION: Do not smoke inside the cab or expose the enclosure to direct flames. The product is FLAMMABLE. Be sure to read these instructions thoroughly before opening and installing the enclosure. The installation is best done when ambient temperature is 70°F or warmer. If installed in cold weather, warming the adhesive Velcro strips before installation is recommended.

1. Carefully open the carton and remove the rolled Cab Enclosure on a large flat surface that is clean and free of dirt or other material that may soil or scratch the windows of the Cab.
2. Check over the parts included in the carton with the parts list shown below:

Doors:

Velcro Hook strips:.....

“ “

“ “

“ “

“ “

Snap studs

Door Panels

Top Cap

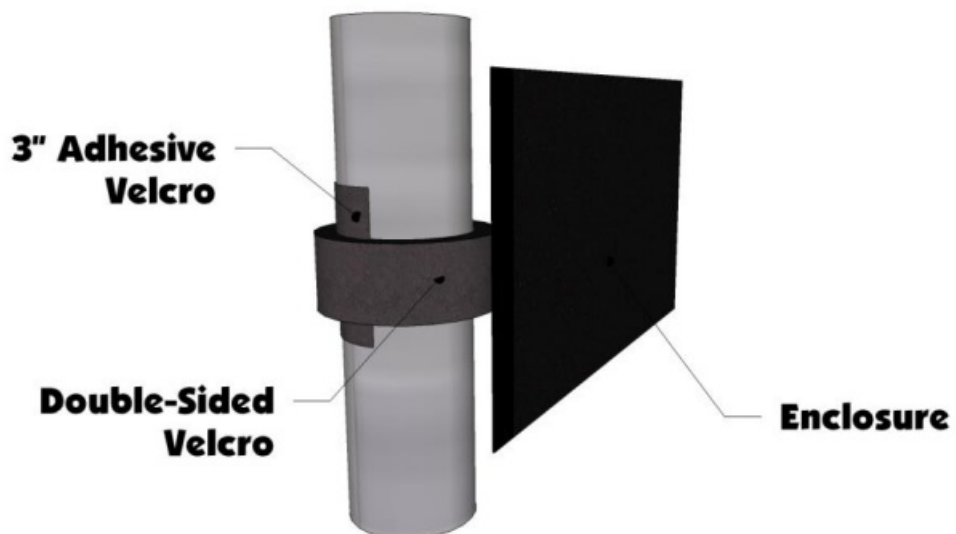
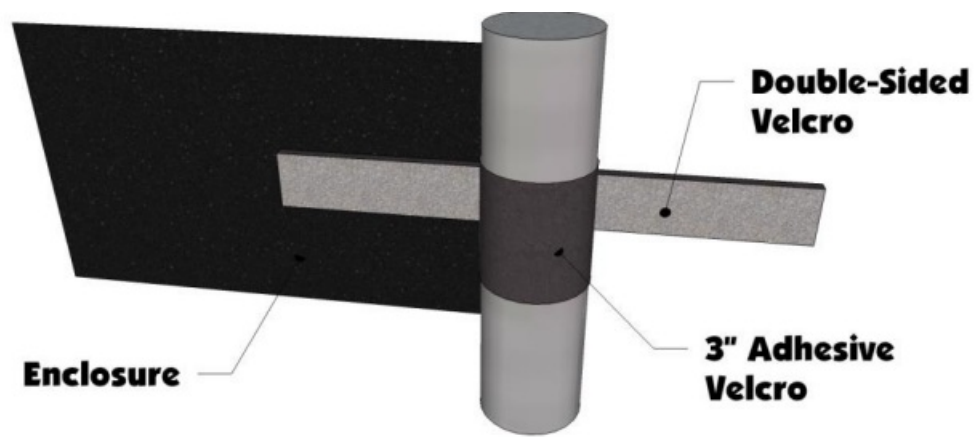
2 “ Adhesive Hook

Polycarbonate Panel

30” Webbing strap with loop

3. **Door Panels**

- a. Begin installation by hanging the Door Panels from the top by using the 3” adhesive Velcro strips as shown in the photos on the next page:



b. After installing the double-sided strips move to the rear of the door and attach the two Velcro tabs to the rear bar using the corresponding adhesive Velcro strip. See the Photo Below:





c. Lastly snap the bottom of the door to the plastic doors on the RZR. NOTE: it helps to place the screw snaps into the sockets on the cabs first, then starting at the top one, push them into the plastic so a small dimple is left behind. Then pull the screw snap back out and screw it into the plastic where the mark was made. See photo below



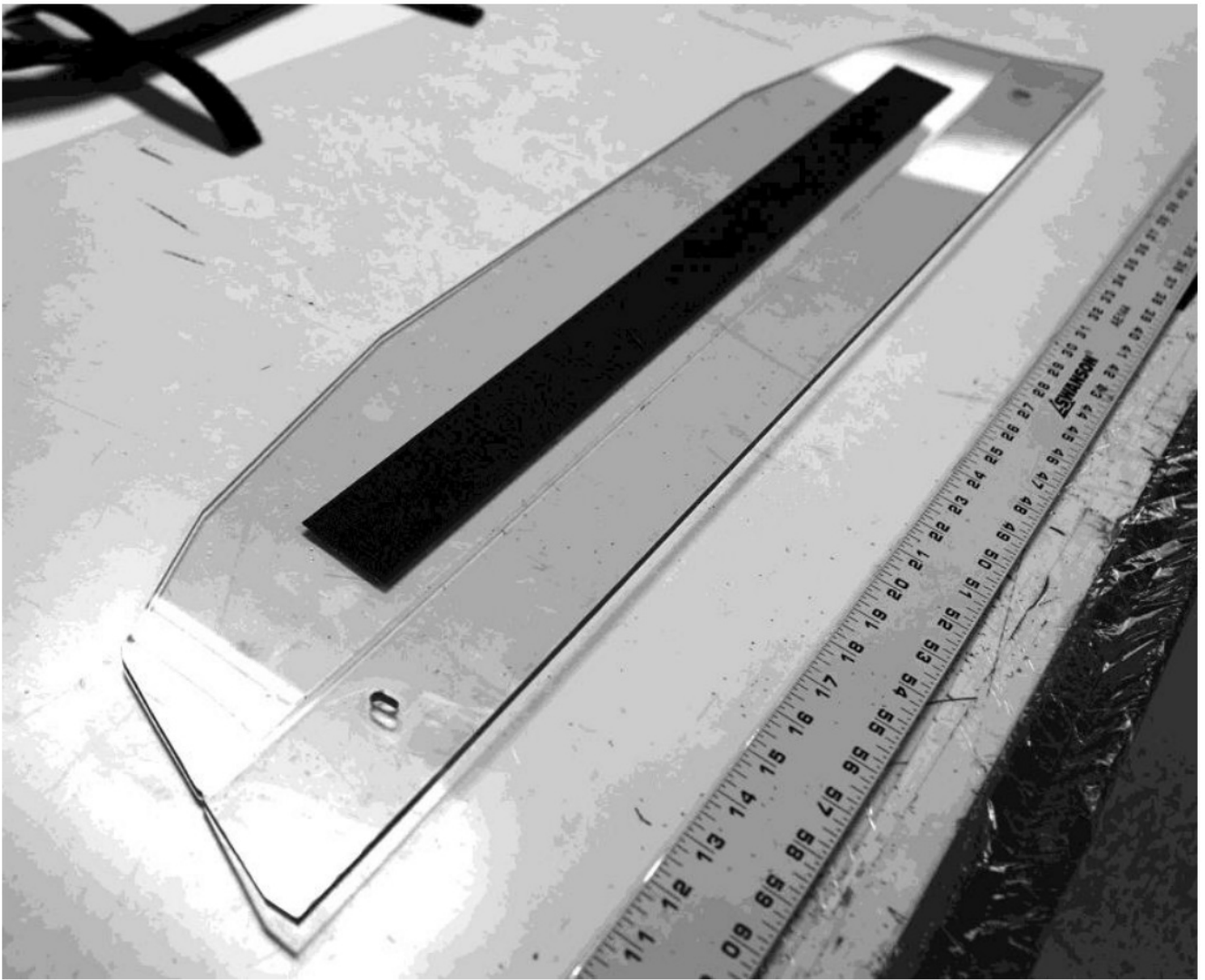
4. Installation of your Soft Rear Window is quite simple. Use the 24" strip and 5" strips to attach the rear window to the frame. It will also attach to the two double-sided tabs from the doors. Take the Soft Rear Window and attach it to the vehicle.
5. Lastly, install the snaps along the bottom of the window. It works best to pop the snaps into the sockets first. Then push the screw end into the plastic to make an indentation or mark. Then pull the snap out and screw it into the plastic.



6. Prior to installing the top you must first remove the two front bolts that attach the front plastic piece to the frame. There are two bolts on each side but only remove the top bolt as shown in the photo below.



7. Then take the small polycarbonate panel and peel the protective film. Then place the 28" adhesive Hook strip on the bottom of of it approximately half an inch in front of the bend. The bottom of the panel will be the side that the bend is bent towards. Place the adhesive hook in the center of the of the piece as shown in the photo below



8. Next insert the polycarbonate panel into the pocket on the front of the soft top. Set it in the pocket as shown in the photo below making sure that the Velcro on the panel will match up with the Velcro sewn to the top.



9. Now push it all the way into the pocket and attach the Velcro together. See the photos below.



10. Now you are ready to install to the front section on the RZR. Set it up on the plastic visor and fold the soft top back so the holes of the polycarbonate panel are exposed. Now take the two bolts you removed from the visor earlier and reinstall them through the panel and into the visor. See the photo below.



11. Now pull the soft top back over towards the rear of the vehicle and begin to install the six straps.



12. Now work your way around the rear of the vehicle and install the straps to tighten down the top. Wrap the looped end of the strap around the bars under the seat belt mount in the middle and under the crossbar on the second bar as shown in the photo below.



13. The last two straps attach to the end of the rear bars. Run the loop through the triangle hole where the two bars connect. See photo below



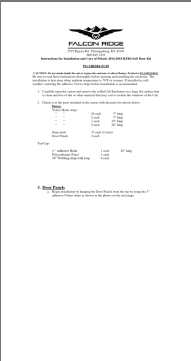
14. Finally make sure the top is centered and pull the straps tight. You may have to cut the ends of the straps and if you do make sure to melt the ends to prevent them from fraying out.

Cleaning and Storage Recommendations:

- 1. Before removing the Falcon Ridge for storage, make sure it is very clean in order to prevent scratching of the window panels. Clean with a soft rag or sponge using a mild liquid detergent soap and warm water solution. Never rub the windows with a dry cloth or rag! Let the Cab dry thoroughly before attempting to roll for storage.
- 2. It is important that the Cab be rolled up for storage rather than folding. Folding will cause damage to the windows!!! Carefully roll up the Cab similar to the way it was when it was packed at the factory. On a large, clean and flat surface, fold the doors over the rear panel first, then, interleave the top and windshield on top of the doors. Begin rolling the Cab into a roll approximately 8 inches in diameter. Put the rolled Cab back into the carton for storage at normal room temperature. It is best not to expose the Cab to either extremely hot or cold temperatures when storing.
- 3. A special cleaner conditioner is available from Falcon Ridge that will greatly increase the service life of the Cab Enclosure. In addition, if the additional hook and loop sets are needed, they can also be ordered.



Documents / Resources

	<p>FALCON RIDGE Polaris RZR XP 4 Turbo Cab [pdf] Instruction Manual</p> <p>Polaris RZR XP 4 Turbo Cab, XP 4 Turbo Cab, Polaris RZR Turbo Cab, Turbo Cab, Cab</p>
---	--