



Faitron HB-03-102B HeatsBox Style+ User Manual

[Home](#) » [Faitron](#) » Faitron HB-03-102B HeatsBox Style+ User Manual

Faitron HB-03-102B HeatsBox Style+



Contents [[hide](#)

- 1 HeatsBox App
- 2 Introduction
- 3 Intended Use
- 4 IMPORTANT SAFEGUARDS
- 5 General Instructions
- 6 Important Notes
- 7 General Recommendations
- 8 Before First Use
- 9 Parts Description
- 10 User Instructions
- 11 APP Screen Explanations
- 12 Overview about LED Colors Start/Stop button
- 13 Cleaning
- 14 Recycling
- 15 Return Policy and Warranty
- 16 Legal Notes
- 17 Certifications
- 18 Specifications
- 19 Scope Of Delivery
- 20 Customer Service
- 21 Documents / Resources
 - 21.1 References
- 22 Related Posts

HeatsBox App

Please read through this manual carefully before the first use.

Get the most out of the HeatsBox® by downloading the HeatsBox App!





or search for “HeatsBox” at the Google Play Store / Apple App Store!

Introduction







Thank you for purchasing HeatsBox, the patented smart heating lunchbox.

At Faitron, we emphasize quality, design, and performance. Through our innovation we hope to improve your lifestyle and make it more convenient and sustainable.

Intended Use

HeatsBox is a mobile heating lunchbox with the patented multi-sided heating technology. The HeatsBox allows you to reheat your meal or even toast a crispy sandwich within minutes. The efficient and even heating process provides a fresh taste and retains full nutritional value of your food. Enjoy your favorite meal and a more convenient lifestyle. HeatsBox is powered by 230V AC and the heating process can be started by either pressing the Start/Stop button or by using our Android or iOS App. The HeatsBox can also be used for transportation.

Please read these instructions carefully and save them for future reference.

-  Compliant to the relevant European norms
-  Class II appliance
-  Restriction of hazardous substances. RoHS compliant.
-  Food safe materials
-  Do not dispose of with normal household waste
-  Read instructions

Please find the latest valid version of the manual online at: www.faitron.com/manual.

IMPORTANT SAFEGUARDS

To ensure steady performance and long-lasting functionality, please observe the warnings pertaining to the appliance. Faitron does not assume any liability for damage that may occur on account of noncompliance. Use the appliance in accordance with its designated use and for its intended purpose only.

Your safety is very important. All safety messages highlighted with **WARNING** can kill or seriously injure you if you do not follow instructions.

WARNING: No modification and/or manipulation are allowed at any circumstances. Faitron rejects any liability whatsoever.

WARNING: Always use caution when heating food and/or liquids. Especially the heating surfaces and the inner dish get hot and can exceed the temperature selected in the APP by the user! Failure to follow these instructions can result in burns.

WARNING: Do not put any live animals inside the HeatsBox regardless of the intended purpose. For food only. In case of a transfer of the product (such as, but not limited to, reselling or gifting), the printed manual needs to be attached to the product itself and provided to the new owner for safety reasons!

The device may only be used for the intended use!

General Instructions

When using electrical appliances, basic safety precautions must always be followed, including the following:

Read all instructions before using. Clean all components before use.

WARNING: Do not operate any appliance with a damaged cord or plug, after appliance malfunctions or after the appliance has been damaged in any manner.

This is applicable if the black isolation shield has been damaged and/or internal wiring can be seen! Unplug immediately and do not touch the damaged area at any circumstance. Return the power cord to the point of sale for immediate exchange.

WARNING: The use of accessories, which were not recommended by the manufacturer may lead to fire, electric shock, or serious personal injury.

CAUTION: Extreme caution must be used when moving the appliance containing hot contents or liquids. Failure to follow these instructions can result in burns.

NOTICE: Outer surface of appliance may heat up during use.

- Do not touch hot surfaces. Use handles or knob.
- To protect against electrical shock and personal injury do not immerse cord, plugs, or appliance in water or other liquids.
- Always attach plug to appliance first, then plug cord into the wall outlet. To disconnect, push the Start/Stop button and remove the plug from the wall outlet. Always unplug by pulling the power plug directly. Never pull the cord.
- Unplug from outlet when not in use and before cleaning. Allow the appliance to cool down before handling any parts and before cleaning the appliance.
- If there are damages at the appliance itself or the user thinks so, return the appliance to the point of sale for examination, repair or adjustment. Repair and maintenance must only be performed by authorized personnel.
- Do not let the cord hang over the edge of a table or counter and do not let it get in contact with hot surfaces.
- A short power-supply cord (or detachable power-supply cord) is provided to reduce the risk resulting from becoming entangled in or tripping over a longer cord.
- Longer detachable power-supply cords or extension cords are available and may be used if care is exercised in their use. If a longer detachable powersupply cord or extension cord is used:

1. The marked electrical rating of the cord set or extension cord should be at least as great as the electrical rating of the appliance;
 2. The cord should be arranged so that it will not drape over the countertop or tabletop where it can be pulled on by children or tripped over unintentionally.
- Avoid sudden temperature changes when using the appliance. Do not place the appliance in or near ovens, refrigerators or freezers. Do not place the appliance in or near microwaves or dishwashers (at least 25 centimeters distance).
 - Close supervision is necessary when appliance is used by or near children.
 - Household use only.
 - Do not use outdoors.
 - Do not use appliance for other than intended use.

Important Notes

WARNING: Never submerge appliance into water or other liquids. It may be damaged beyond repair and cause a risk of electric shock.

- Do not use abrasive cleaners or scouring pads.
- Do not immerse the appliance, cord or plug into water at any time.
- During first use, the appliance may emit a slight odor. This is normal and will disperse within a few minutes.
- Always make sure the outside of the inner dish is dry prior to use. If the inner dish is returned to the appliance when wet, it may damage the appliance, causing it to malfunction.
- When opening the lid during or after use, hot air may escape and could cause burns.
- Do not use appliance when it is empty. Doing so may cause malfunction.
- Do not preheat the appliance before use.
- Always unplug the appliance and allow it to cool completely before cleaning.
- The appliance should be cleaned after every use.
- Store the appliance away from sources of heat and moisture and out of the reach of children and pets.

General Recommendations

CAUTION: To reduce risk of electrical shock, use only the original inner dish to heat up food. Never place food directly in the body of the appliance.

- Avoid the use of any objects that might damage the heating surface. A damaged heating surface may not heat the food or liquids well.
 - Ensure that the area between the heating surface and inner dish is always clean and free from any foreign substances. This is important to ensure proper contact between the two.
 - Do not use the appliance in extremely humid or wet conditions.
 - Do not use the appliance in environments of below 10°C/50°F or above 45°C/113°F.
 - For storage and transport put the appliance into its original packaging and place it in a well-ventilated and dry area.
 - This appliance may not be used by persons with reduced physical, sensory or mental capabilities, or whose experience or knowledge is not sufficient
- Children should not use the appliance as a toy and must be supervised by adults.

- The appliance can be used up to an altitude of 2500m/8200ft above sea level.
- Do not attempt to cool the appliance by pouring cold water into it. Let it cool naturally.
- Do not place on or near a hot gas or electric burner, or in a heated oven.
- Unplugging the appliance to override smart enabled or remote functions.
- For your safety, this appliance complies with safety regulations and directives in effect at the time of manufacture.

Before First Use

- Read all instructions and important safeguards.
- Remove all packaging materials and make sure all items are in good condition.
- Remove inner dish from appliance and clean with warm soapy water. Rinse and dry thoroughly before returning to the appliance.
- Wipe body clean with a damp cloth.
- Download the HeatsBox app for your smartphone:
- Google Play Store:
Search for “HeatsBox” in Play Store, or enter the following link in your browser: www.faitron.com/android
- Apple App Store:
Search for “HeatsBox” in the App Store, or enter the following link in your browser: www.faitron.com/ios
- You can find the up-to-date manual of the App by visiting: www.faitron.com/App

SAVE THESE INSTRUCTIONS!

Parts Description



1. HeatsBox appliance
2. Lid of HeatsBox
3. Start/Stop button with LED indicator light
4. Fastener
5. Inner dish
6. Overpressure valve
7. Rubber sealing of lid
8. Heating surface
9. Power cord
10. Divider
11. Lid for inner dish

User Instructions

1. Put the food in the removable inner dish. Keep the food below the maximum indication („— max“).
2. Place the removable inner dish into the appliance.
3. **CAUTION:** Do not use appliance on unstable surfaces or on surfaces that are vulnerable to heat.
4. Place the lid on the appliance and close it.
5. It is now imperative that you open the overpressure valve.
6. Connect the power plug to the appliance.
7. Press the Start/Stop button. The button should now light up continuously in white. Now please follow the steps in either “Offline Use” or in “App controlled Use”

Offline Use

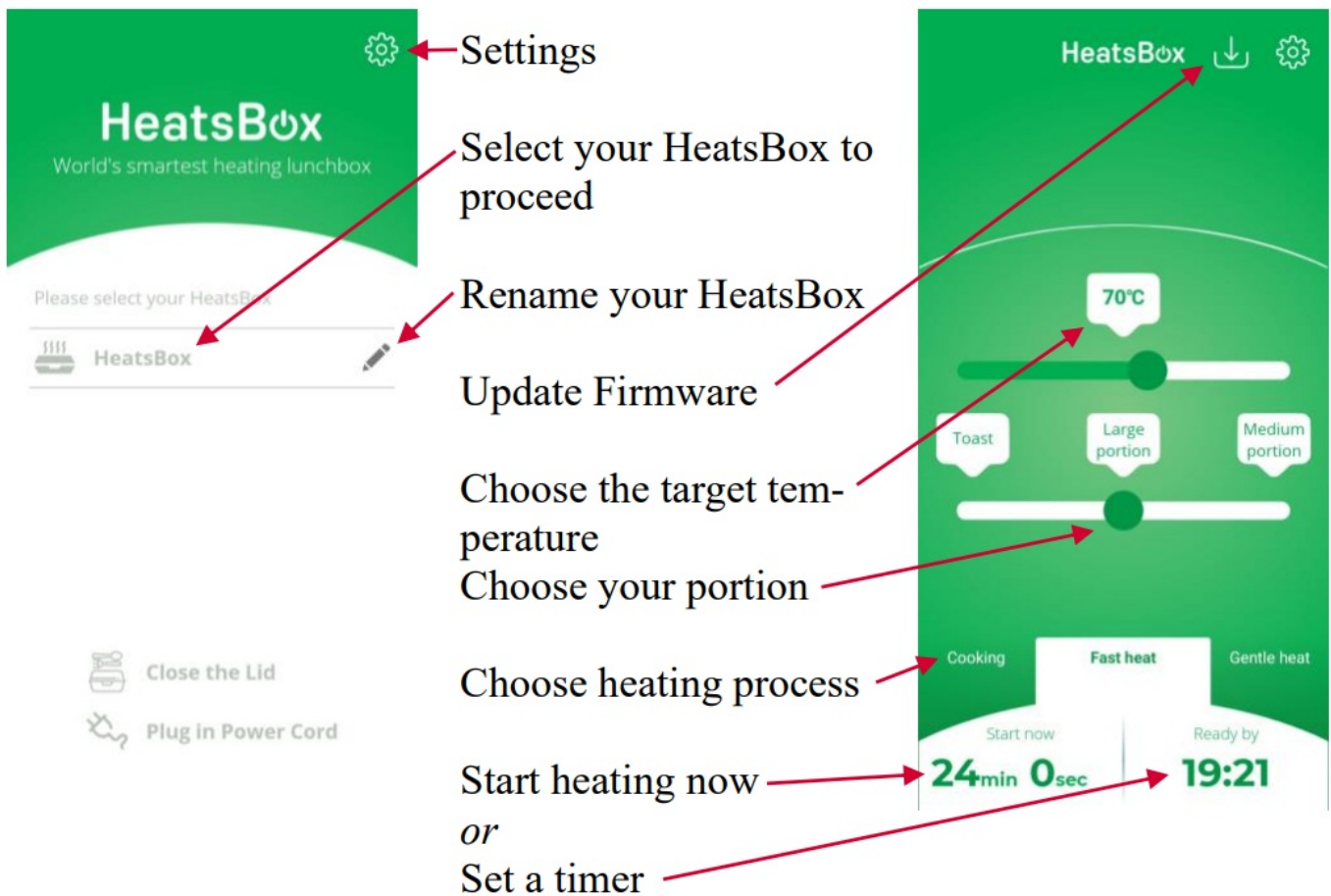
- Press the Start/Stop button to turn on the heating. Default setting for offline heating is 75°C/167°F. The power indicator light will shine in red color, which means the heating is on.
- Remove the lid after some time to check the heating progress. Put back the lid again to continue the heating process.
- Press the Start/Stop button to turn off the appliance after reaching the desired heating time. The heating and the power indicator light will turn off.
The LED control lamp should now light up again in white.
- The appliance indicates that the target temperature has been reached by switching the color of the LED control lamp to green. The appliance then automatically keeps your food warm at a certain temperature for a prolonged period.
- Allow the appliance to cool down before eating or handling any parts.
- Disconnect the power plug and remove the lid.
- Enjoy your meal.

App-controlled Use

- Open the HeatsBox App on your smartphone.
- Select your HeatsBox and set the parameters such as target temperature, heating process or timer individually.
- If the user is connected to the appliance, the LED control lamp will turn blue.
- Start the heating process by selecting the field on the app that displays the estimated time. The heating process starts immediately, and the LED control lamp turns red.
- If you have set a timer, the HeatsBox will automatically start the heating process after a set time, but not immediately. You can close the app or disconnect the bluetooth®* connection. The information is stored directly on the appliance. LED control lamp shines yellow.
- Check the current food temperature on your HeatsBox App.
- Press the Start/Stop button to turn off the appliance after reaching the desired heating time. The heating and the power indicator light will turn off.
The LED control lamp should now light up again in blue.
- The appliance indicates that the target temperature has been reached by switching the color of the LED control lamp to green. The device then automatically keeps your food warm at a certain temperature for a prolonged period.
- Allow the appliance to cool down before eating or handling any parts.
- Disconnect the power plug and remove the lid.

- Enjoy your meal.

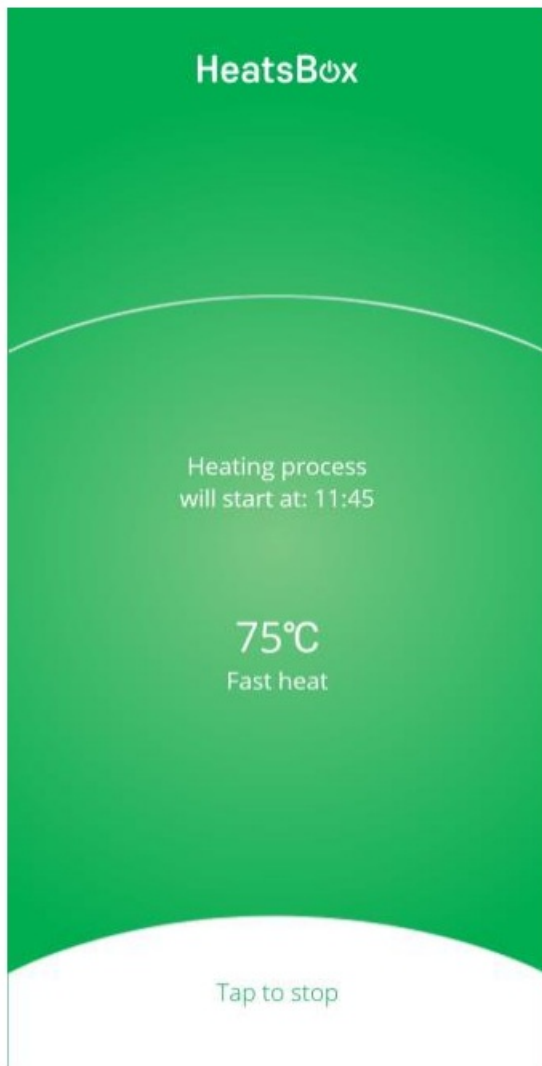
APP Screen Explanations



bluetooth is a registered trademark by Bluetooth SIG, Inc., Kirkland, United States.

On this screen ("set a timer"), the heating process will start in a few minutes based on the parameters selected.

Please note:



- You don't need to do anything. The HeatsBox will start heating automatically. Once the heating process started, the APP will show the screen below.
- The HeatsBox LED should shine in yellow color to confirm the information are stored on the HeatsBox and the heating process will start soon.

On this screen, the heating process has started with the parameters selected.

Please note:

- The heating time is only an estimation and subject to recalculations during the heating process run automatically by the HeatsBox firmware and algorithms.
- After the heating has finished, the HeatsBox will keep the temperature automatically for 30 more minutes ("keep warm mode").

Overview about LED Colors Start/Stop button

LED Color	Status
White	Ready for offline heating & to be App-connected
Red	Heating process in progress
Yellow	Timer-Settings are preset and the HeatsBox will start heating soon.
Green	Meal is ready to eat. Automatic keep warm function for 30 minutes.
Blue	HeatsBox is connected to the App.

Cleaning

- Remove the lid of the appliance.
- Remove the rubber sealing from the lid.
- Wash the rubber sealing using warm soapy water and a soft sponge.
- Remove the inner dish from the appliance.
- Wash the lid with a well-wrung damp cloth without detergent.
- Wash the interior of appliance with a well-wrung damp cloth without detergent.
- Dry the interior and lid of appliance thoroughly.
- Clean the main body and exterior of lid with a well-wrung damp cloth without detergent.
- Dry main body and exterior of lid thoroughly.
- The inner dish can be washed in the dishwasher.

Any other servicing should be performed by an authorized service representative.

Recycling

Electric and electronic equipment and included batteries contain materials, components and substances that can be hazardous to your health and the environment, if the waste material (discarded electric and electronic equipment and batteries) is not handled correctly. The HeatsBox and its part should not be disposed of with other household waste, but should be disposed of separately.

All cities have established collection points, where electric and electronic equipment and batteries can either be submitted free of charge at recycling stations and other collection sites or be collected from the households. Additional information is available at the technical department of your city.

Return Policy and Warranty

Faitron warrants this product to be free from defects in materials or workmanship for 2 year from date of original purchase. If you have a claim under this warranty, we will repair or replace it free of charge provided:

- you have not misused, neglected or damaged it;
- it has not been modified (unless by the manufacturer);
- it has not been used commercially;
- you have not fitted a plug incorrectly; and

- you supply your receipt to show when you bought it.

This warranty does not affect your statutory rights.

Legal Notes

Faitron does not accept liability for errors, omissions, or any other type of clerical mistake in this user manual. Furthermore, the information is subject to change without notice. It has been provided without warranty of its correctness and does not constitute any warranted qualities. The user bears all risks of usage of this information. No further-reaching warranty claims or assertion of compensation claims can be derived from this document.

With your purchase and the acceptance of the delivery, you have approved to have accepted the terms and conditions.

For more information, please visit: www.faitron.com/terms.

Certifications

- CE Tested according to IEC 60335-1 & IEC 60335-2-9
- CE-RED Tested according to IEC 60335-1 & IEC 60335-2-9
- UKCA Tested according to IEC 60335-1 & IEC 60335-2-9
- RoHS compliant
- REACH compliant
- Food-grade LFGB & FDA

Specifications

HeatsBox

- Model: HB-03-102B
- Material: PP, Silicone, Aluminum
- Food Safety: Food grade materials (LFGB and FDA)
- Heating Power: 100 W (max.)
- Power Consumption: 102 W (max.)
- Voltage & Frequency: 230V AC & 50/60 Hz (HB-03-102B)
- Max. Temp: 85°C / 185°F
- Net Weight: 700 g / 1,55 lbs

Inner Dish

- Nom. Capacity: 650 ml / 22 oz
- Max. Capacity: 925 ml / 31 oz
- Material: Stainless Steel (304)
- Food Safety: Food grade material
- Net Weight: 190 g / 0.42 lbs

Power Cord & Connector

- Length: 1.5 m / 5 ft
- Plug: Phase and neutral

Scope Of Delivery

- 1 HeatsBox
- 1 Inner dish
- 1 Lid for inner dish
- 1 Power cord
- 1 User manual
- 1 Divider


For the latest version of the manual, please visit this website: www.faitron.com/manual

Customer Service

Manufactured by:

Faitron AG
Brandstr. 24
8952 Schlieren
Switzerland
customer@faitron.com
www.faitron.com

Documents / Resources

	<p>Faitron HB-03-102B HeatsBox Style+ [pdf] User Manual HB-03-102B HeatsBox Style, HB-03-102B, HeatsBox Style, Style</p>
---	---

References

- [🔌 Home - Faitron](#)
- [🔌 Home - Faitron](#)
- [🔌 HeatsBox - Apps on Google Play](#)
- [🔌 App - Faitron](#)
- [🔌 HeatsBox im App Store](#)
- [🔌 Manual - Faitron](#)
- [🔌 Terms - Faitron](#)