

**Contents** [ [hide](#) ]

- [1 FAGERHULT ML Hydro G3 Surface Mounted](#)
- [2 Installation Instructions](#)
- [3 Safety and Compliance](#)
- [4 Frequently Asked Questions](#)
- [5 Documents / Resources](#)
  - [5.1 References](#)

# FAGERHULT

## FAGERHULT ML Hydro G3 Surface Mounted



### Product Specifications

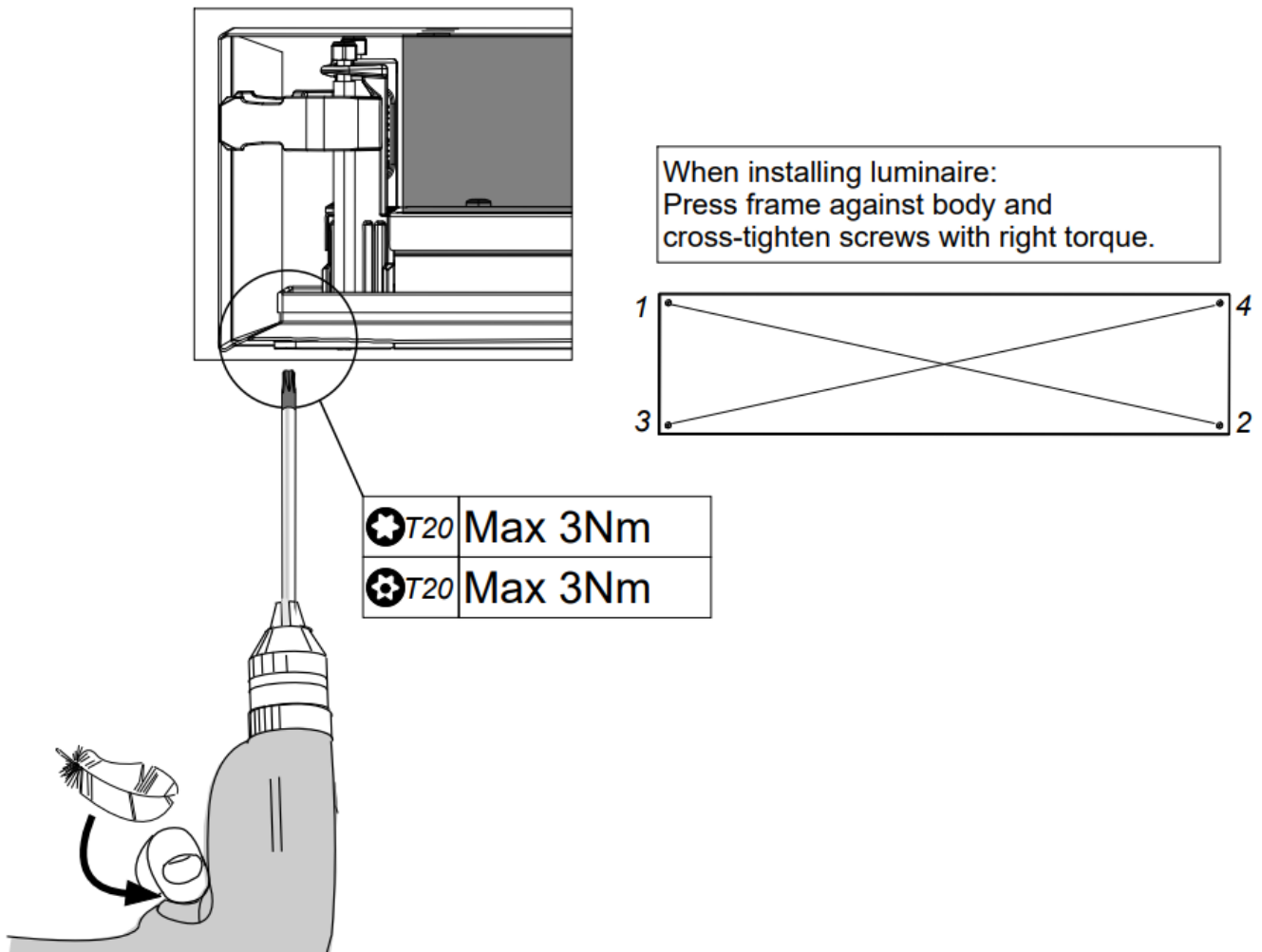
- Model: ML Hydro G3 surface mounted
- Dimensions: 1050mm x 200mm x 200mm
- Available Sizes: 300×600, 450×200, 600×600, 450×450, 300×1200
- Cable Management: Cable through top for both variants; cable through short side only

for glass variant

- Mounting: Glass/Robust; Kardborre/Velcro

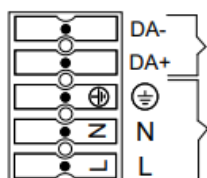
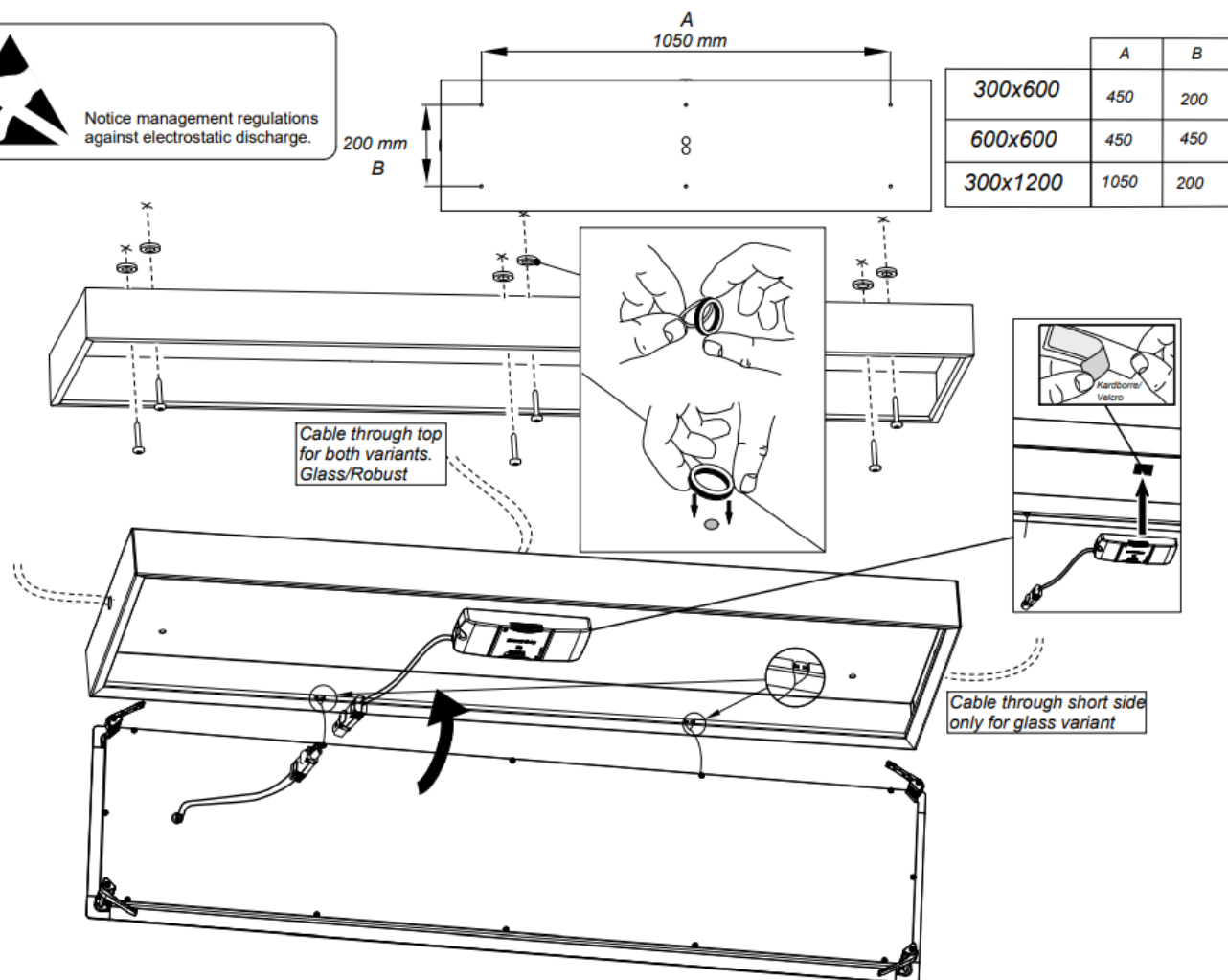
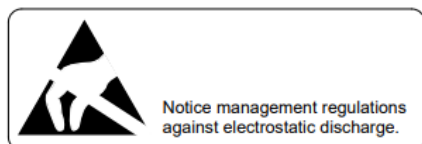
## Installation Instructions

1. Press the frame against the body.
2. Cross-tighten screws with the right torque.
3. Use T20 screwdriver, Max 3Nm torque.



## Safety and Compliance

- **Notice:** Management regulations against electrostatic discharge must be observed.
- **Insulation:** Basic insulation is required between mains and control wiring.
- **Replacement:** The light source and control gear should only be replaced by the manufacturer or its designated person.



Basic insulation between mains and control wiring.

## Manufacturer Information

Manufactured by Fagerhult Sweden.

For UK market importer: Fagerhult UK, 33-34 Dolben Street, London, SE1 OUQ.

## Additional Information

It is appropriate that this information is passed on to the users of the installation.

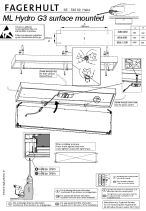
## Frequently Asked Questions

### • Q: Can the light source be replaced by the user?

A: No, the light source and control gear should only be replaced by the manufacturer or its designated person for safety reasons.


- **Q: What is the recommended torque for tightening the screws during installation?**  
A: Use a T20 Torque Wrench with a maximum torque of 3Nm to cross-tighten the screws securely.

## Documents / Resources

	<a href="#">FAGERHULT ML Hydro G3 Surface Mounted [pdf]</a> Instruction Manual Surface mounted, ML Hydro G3 Surface Mounted, ML Hydro G3, Surface Mounted, Mounted
---	---

## References

- [User Manual](#)

 FAGERHULT, ML Hydro G3, ML Hydro G3 Surface Mounted, Mounted, Surface Mounted

## Leave a comment

Your email address will not be published. Required fields are marked \*

Comment \*

Name

Email

Website

☐ Save my name, email, and website in this browser for the next time I comment.

**Post Comment**

**Search:**

**Search**

[Manuals+](#) | [Upload](#) | [Deep Search](#) | [Privacy Policy](#) | [@manuals.plus](#) | [YouTube](#)

This website is an independent publication and is neither affiliated with nor endorsed by any of the trademark owners. The "Bluetooth®" word mark and logos are registered trademarks owned by Bluetooth SIG, Inc. The "Wi-Fi®" word mark and logos are registered trademarks owned by the Wi-Fi Alliance. Any use of these marks on this website does not imply any affiliation with or endorsement.