



FACTORY TEAM 91918 Diff Decoder Instruction Manual

[Home](#) » [FACTORY TEAM](#) » FACTORY TEAM 91918 Diff Decoder Instruction Manual 

Contents

- [1 FACTORY TEAM 91918 Diff Decoder](#)
- [2 INTRODUCTION](#)
- [3 Specifications](#)
- [4 Using your Diff Decoder](#)
- [5 Warranty](#)
- [6 Documents / Resources](#)



FACTORY TEAM 91918 Diff Decoder



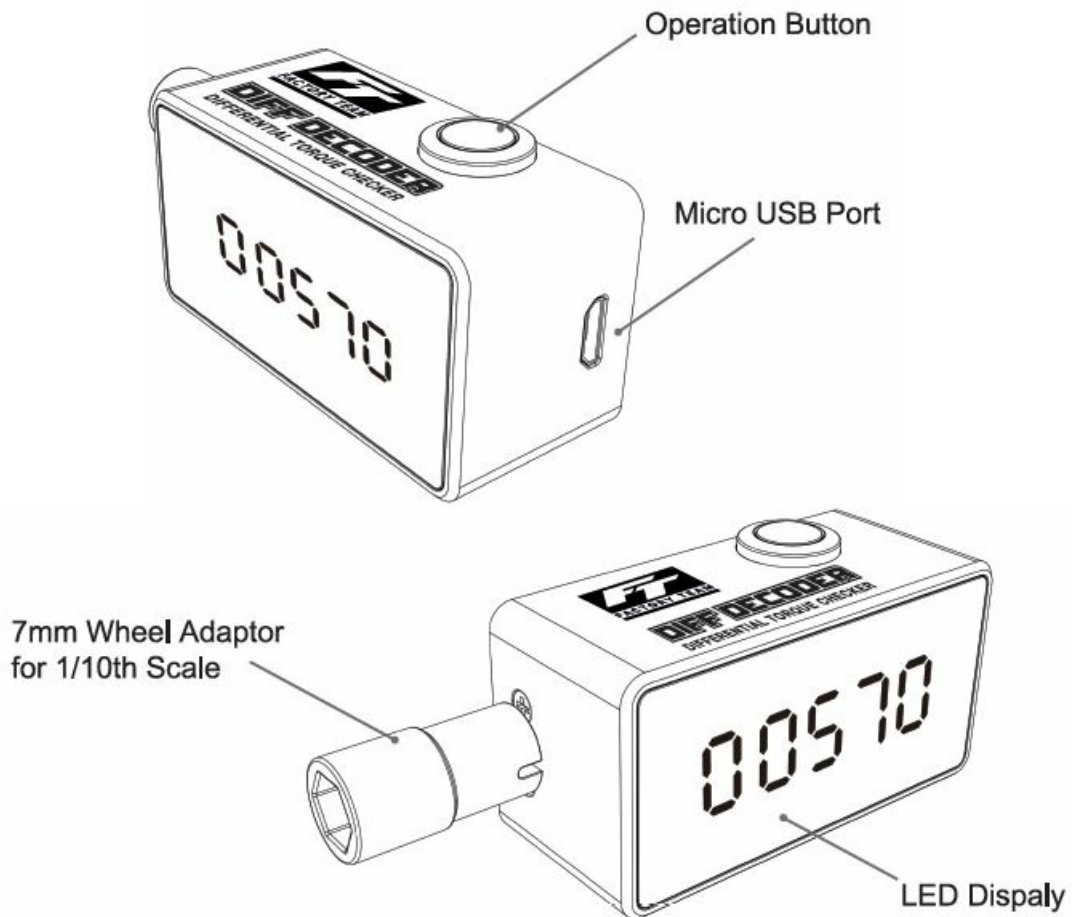
INTRODUCTION

The Factory Team Diff Decoder is an indispensable tool for the hardcore racer. The Diff Decoder displays a consistent, measured value for differential hardness rather than reliance on an estimation or feeling. This measurement can be used to build differentials to a specific hardness, fine-tune to improve vehicle performance, understand the differences between oil brands and temperature, or to replicate an existing differential.

The Diff Decoder's machined aluminum body is compact and lightweight with a 5-digit LED display suitable for measurement of a wide variety of differentials. Includes one 1:10 7mm hex adapter to measure at the wheel, and one 1:8 pin adapter to measure at the diff outdrive.

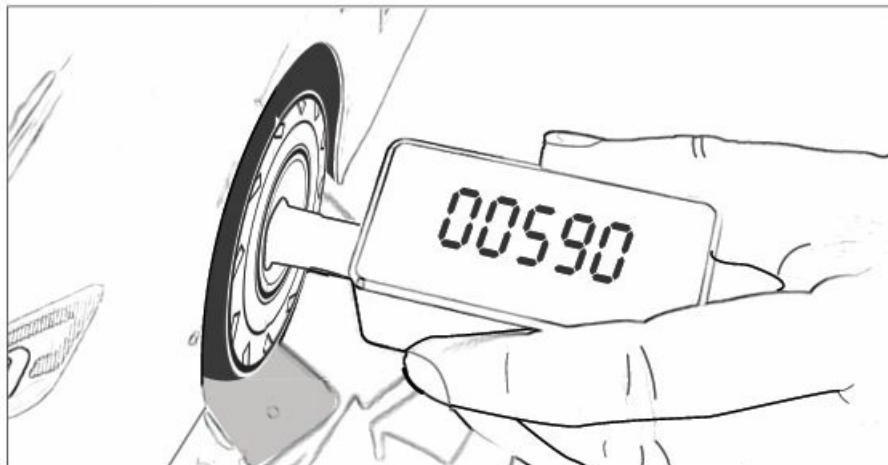
Specifications

- **Voltage input:** USB 5V
- **Display:** 5-digit LED
- **Current (A):** 2A max
- **Case dimensions (mm):** 62 x 24 x 28
- **Net weight g):** 59



Using your Diff Decoder

- Install the appropriate adapter on the Diff Decoder's output shaft (1.5mm hex required)
- Plug the supplied USB cord into a 5V USB port (USB A) and into the Diff Decoder (USB Micro C)
- Connect the Diff Decoder adapter to the differential outdrive or wheel nut
- While holding the differential main gear, or when using the wheel adapter, holding the car in position with all four wheels off the ground, press the Operation Button to spin the differential. Spin for approximately 5 seconds and note the values displayed. Values will fluctuate due to varying internal or drivetrain loads so note a median value as your official measurement



NOTE: Oil viscosity changes with temperature changes so it is advisable to compare measurements taken in similar ambient temperatures.

The crossed-out wheeled bin means that within the European Union, this product must be taken to a separate waste collection facility at the product's end of life. Do not dispose of this product as unsorted municipal waste.

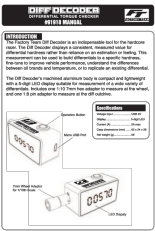
Associated Electrics, Inc. declares that this product complies with the essential requirements and other relevant provisions of the European directive 2014/30/EU.

Warranty

Your Factory Team Diff Decoder is warranted to the original purchaser for 90 days from the date of purchase, verified by the sales receipt, against defects in material and workmanship. Product that has been mishandled, abused, used incorrectly, used for an application other than intended, or damaged by the user are not covered under warranty. Associated Electrics Inc. is not liable for any loss or damage, whether direct or indirect, incidental or consequential, or from any special situation, arising from the use, misuse, or abuse of this product.

- 21062 Bake Parkway, Lake Forest, CA 92630 USA
- www.AssociatedElectrics.com

Documents / Resources



FACTORY TEAM 91918 Diff Decoder [pdf] Instruction Manual
91918, 91918 Diff Decoder, Diff Decoder, Decoder