



Contents [[hide](#)]

- [1 F and U PRO Series Wi-Fi Function](#)
- [2 Wi-Fi Module Specification and Operation Guidelines](#)
- [3 Install the Wi-Fi module](#)
- [4 Download and Install the App](#)
- [5 Registration](#)
- [6 Add device](#)
- [7 Air conditioner control](#)
- [8 Trouble Shooting](#)
- [9 FCC STATEMENT](#)
- [10 CONTACT](#)
- [11 Documents / Resources](#)
 - [11.1 References](#)



F and U PRO Series Wi-Fi Function



This description is applied to Air Conditioners with Wi-Fi function.
Please read the manual carefully before using the product, and keep it for future reference.

Wi-Fi Module Specification and Operation Guidelines

1. Minimum specifications for a smartphone:
Android 5.0 version or higher 105 9.0 version or higher
2. Basic parameters for the Wi-Fi module

Parameters	Details
Network frequency	2.400 - 2.4835GHz
Standards of WLAN	IEEE 802.11 b/g/n (channels 1-14,channels 1-13 for EU/AU,channels 1-11 for US/CA)
Protocol stack support	IPv4/TCP/UDP/HTTPS/TLS/DNS
Security support	WEP/WPA/WPA2/AES128
Network type support	STA/AP/STA+AP
Max. RF Power	18.5 dbm
Blue tooth frequency	2.402 - 2.480GHz
Blue tooth RF Power	9 dbm

3. Operation guideline. Please take below simple guideline instructions as a reference.

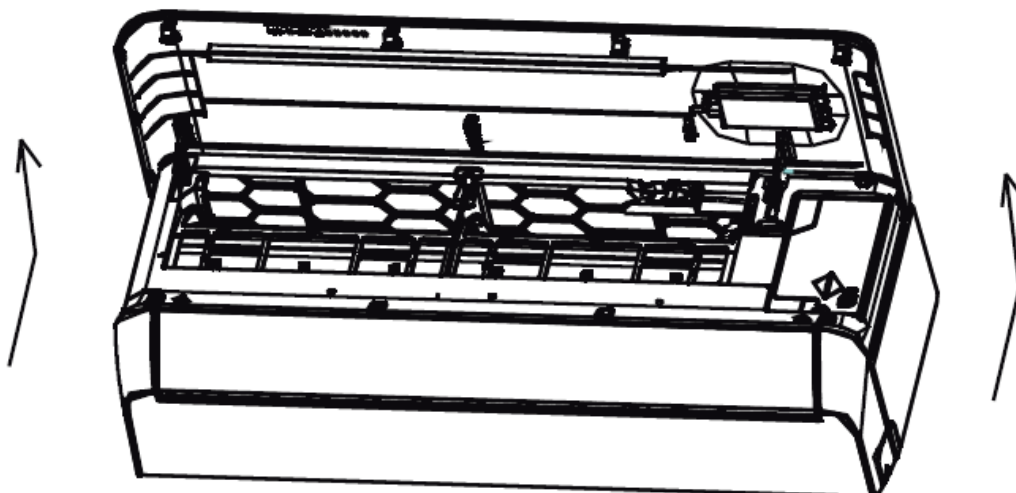
Operation Steps	Operation Items	New Account	Re-install APP (registered before)
Step 1	Download and Install APP	YES	YES
Step 2	Activate APP	YES	YES
Step 3	Registration Account	YES	NO
Step 4	Login	YES	YES
Step 5	Add Device to control	YES	Registered Device will remain.

Note: If you registered the account and added a device before, when you reinstall the APP again and log in, the added device will remain.

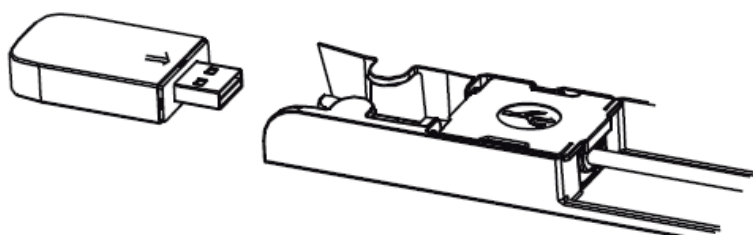
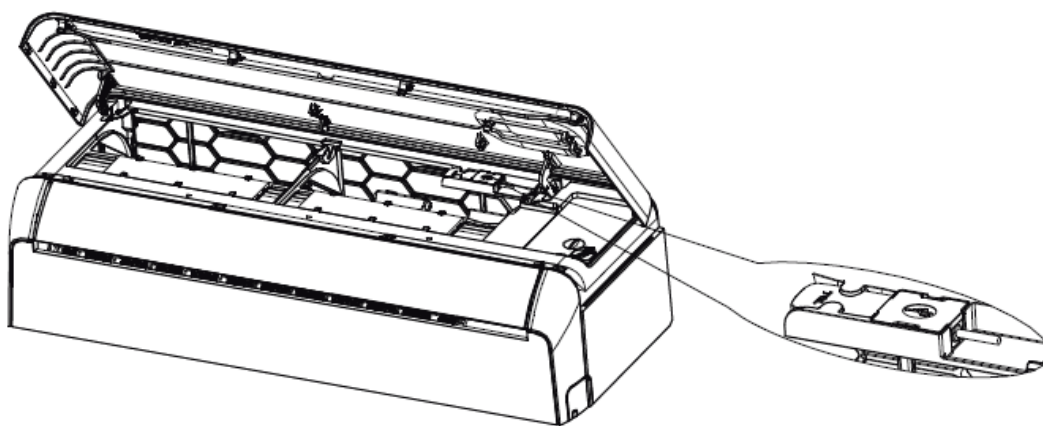
Install the Wi-Fi module

Install the Wi-Fi module(Optional)

1. Open the panel of the indoor unit.



2. Take off the cover of the USB Wi-Fi, follow the arrow and insert the USB Wi-Fi module into the reserved USB slot on the frame.



Download and Install the App



Smart Life

For an Android smartphone

- **Method 1:** Please scan the QR code with a browser scanner, download and install the APP.
- **Method 2:** Open the Google “Play Store” on your smartphone and search “Smart Life”, download and install the APP.



For 10S smartphone

- **Method 1:** Please scan the QR code and follow the tips to get into “AppStore”, download and install the APP.
- **Method 2:** Open the Apple App Store on your smartphone and search “Smart Life”, download and install the APP.

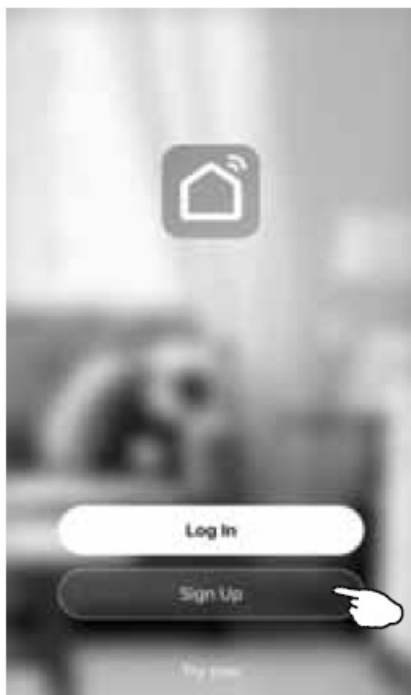


Note:

Please enable the permissions of Storage/Location/Camera for this APP when installing. Otherwise, it will have some problems when operating.

Registration

1. If you don't have an account, please tap the button “Sign Up”.
2. Read the Privacy Policy and tap “Agree”.



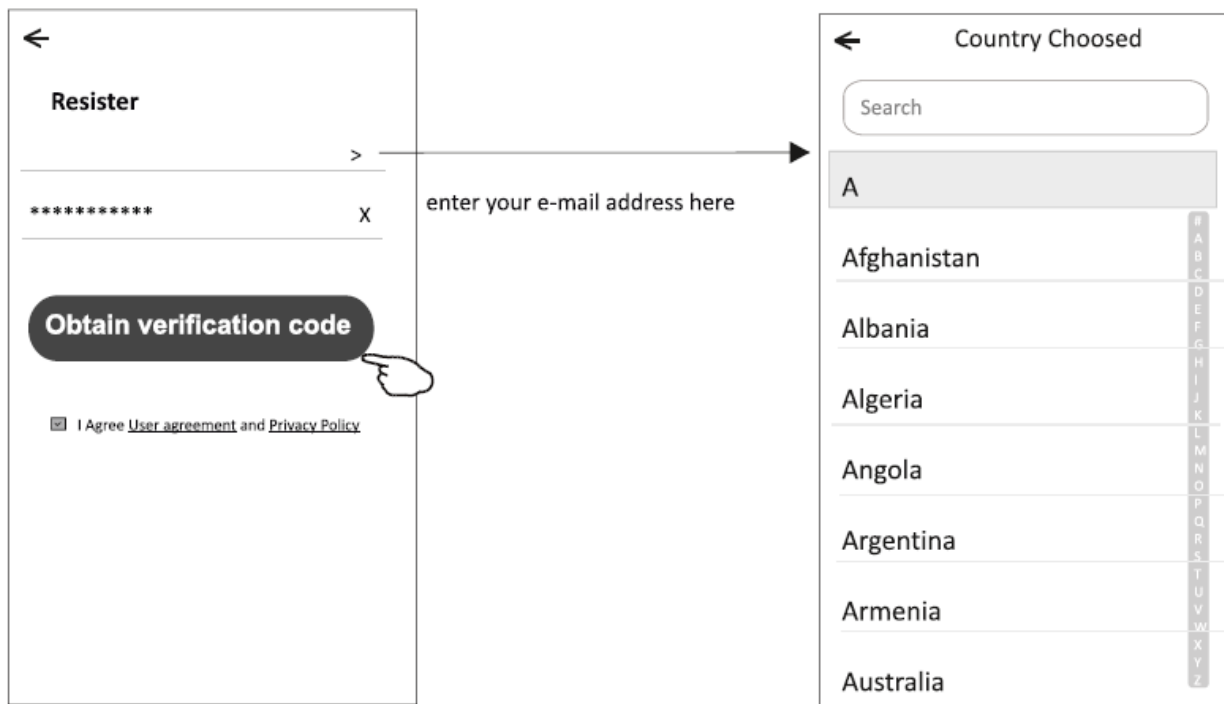
Notice

We understand the importance of privacy. In order to more fully present our collection and use of your personal information, we have revised our privacy policy and user agreement in detail in accordance with the latest laws and regulations. When you click [Agree, you have fully read, understood and accepted all of the updated Privacy Policy and User Agreement. Please take some time to become familiar with our privacy policy, and if you have any questions, please feel free to contact us.

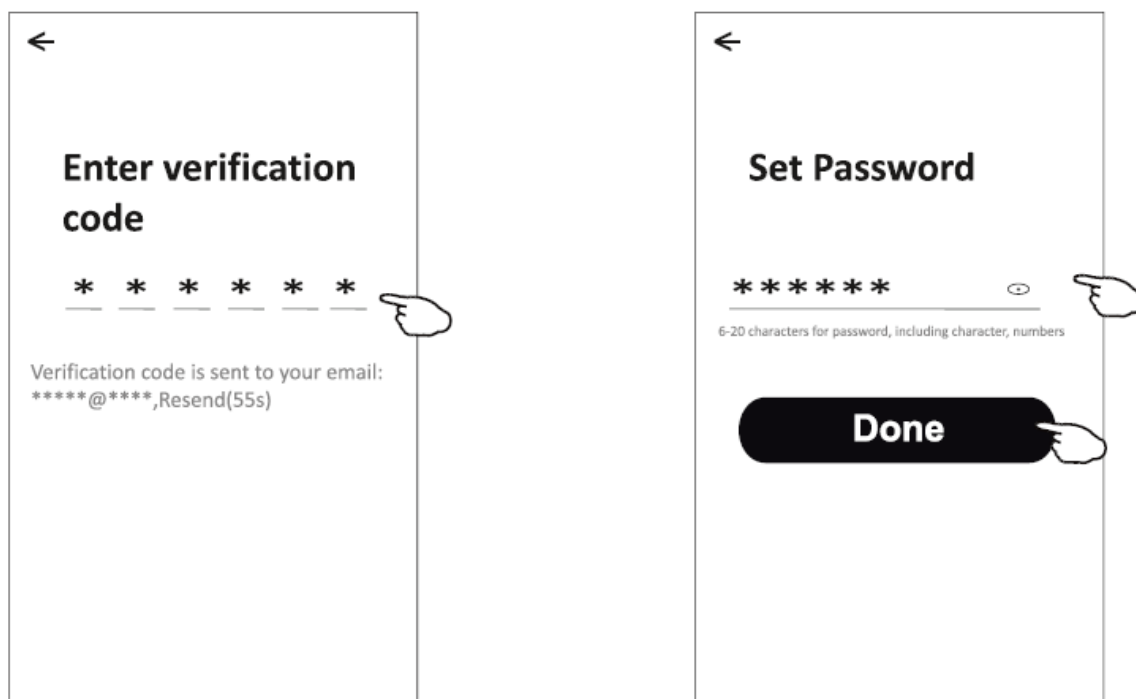
Privacy Policy and User Agreement

Disagree	Agree
----------	-------

3. Tap ">" and choose the country.
4. Enter your e-mail address.
5. Tap the button "Obtain verification code".

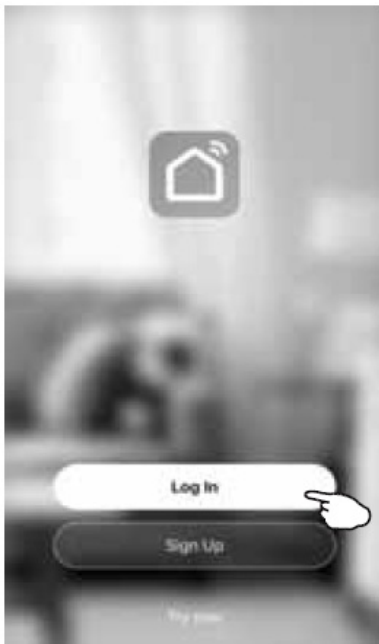


6. Enter the verification code you received via e-mail.
7. Set the Password with 6-20 characters, including letters and numbers.
8. Tap "Done".



Login

1. Tap “Log In “.
2. Enter your registered account and password.
3. Tap the “Log in” button.



←

Login

***** >

Log in

[Forgot password](#)

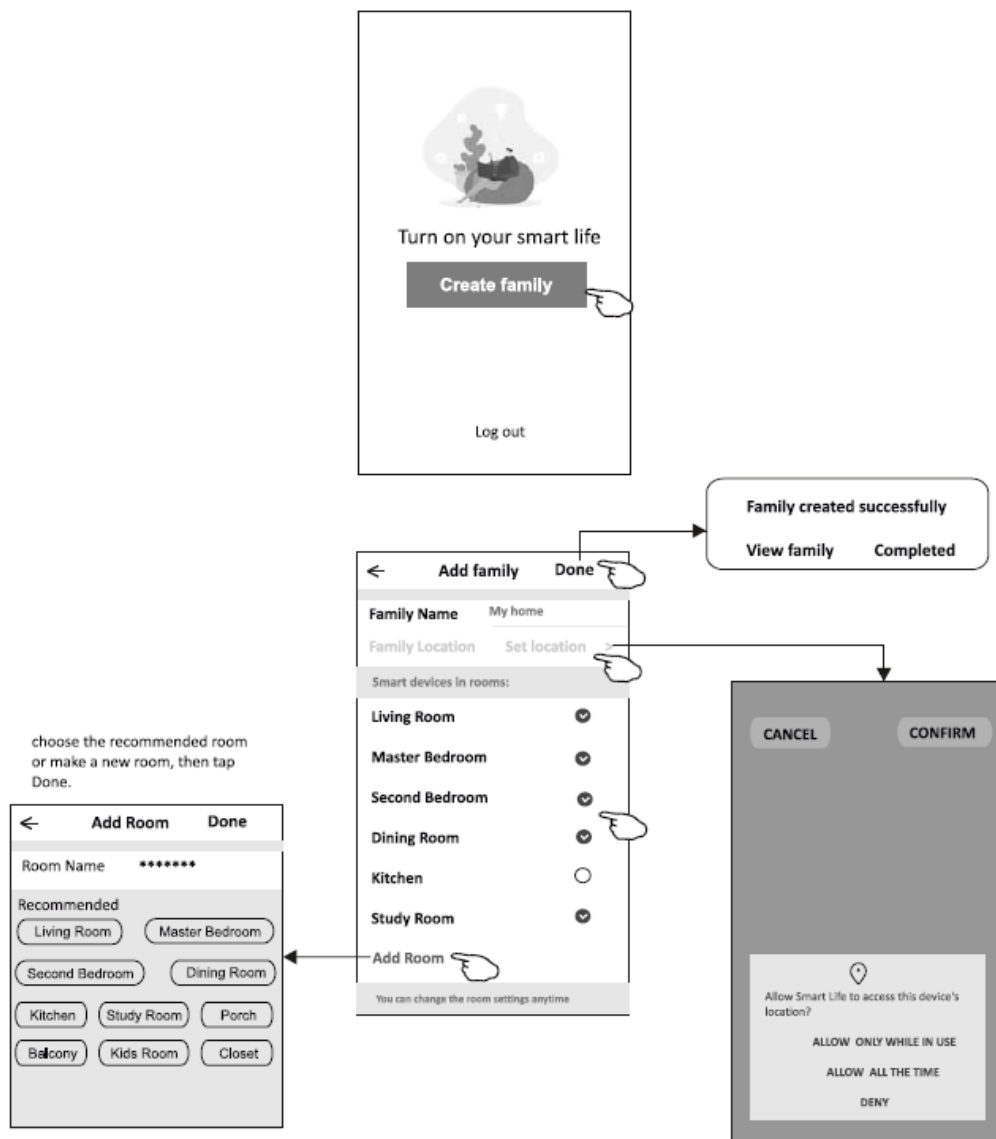
Login means that you agree with [User Agreement](#) and [Privacy Policy](#)

enter your account here

enter the password

The first time the APP is used, the Create family is needed:

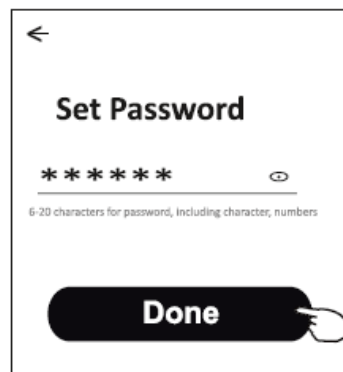
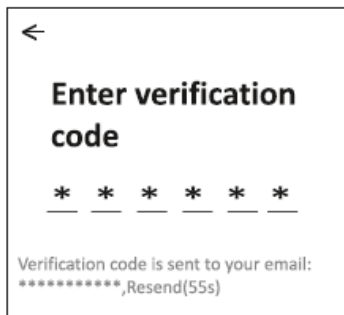
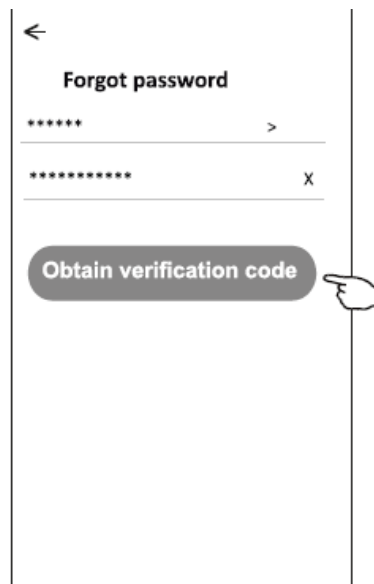
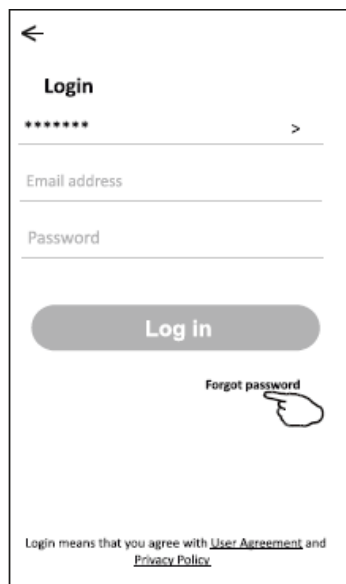
4. Tap “Create family”.
5. Make a name for the family.
6. Set the location.
7. Choose default rooms or add new rooms.
8. Tap “Done” and “Completed”.



Forgot the password

If you forgot the password or you want to reset the password, operate as below:

1. Tap "Forgot password".
2. Enter your account(e-mail address) and tap the button "Obtain verification code".
3. Enter the verification code received in your email.
4. Set the new password and tap the button "Done".



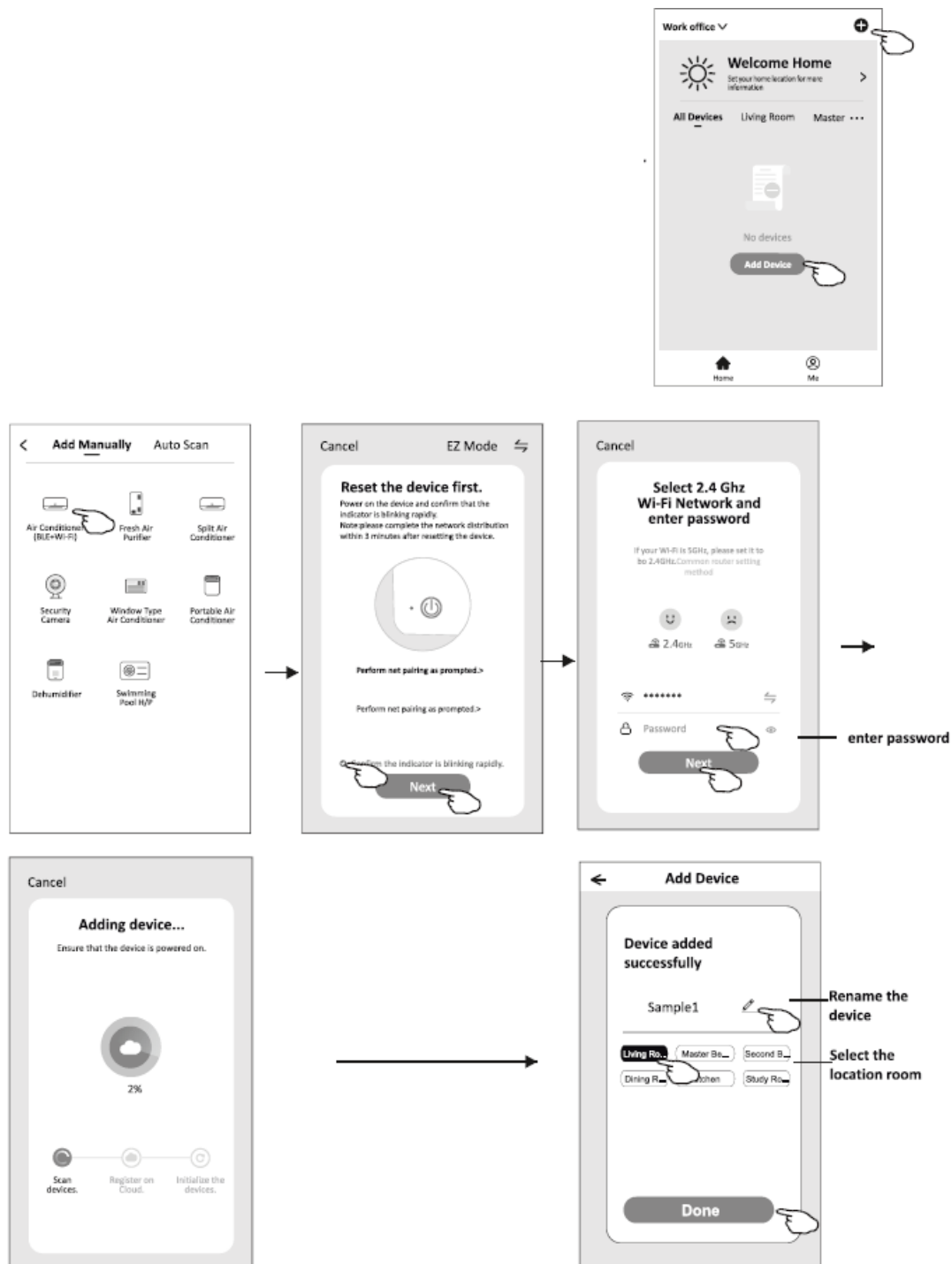
Add device

There are 3 methods to add the device.

1-EZ mode

1. Power on the indoor unit, no need to launch the air conditioner.
2. Click “+” in the upper right corner of the “Home” screen or tap “Add device” on the room that has no device.
3. Tap the “Air conditioner(BLE+Wi-Fi)” logo.
4. Follow the comments on the next screen to reset the Wi-Fi module, then check “Confirm the indicator is blinking rapidly” and tap “Next”.
5. Input the password of the Wi-Fi which the same as your smartphone connection, then tap “Next”.
6. You can see the percentage rate of the connecting process, at the same time
 - “PP”, “SA”, “AP” shining in turn on the indoor display.

- “PP” means “Searching the router.”
- “SA” means “connected to the router.”
- “AP” means “connected to the server.r”

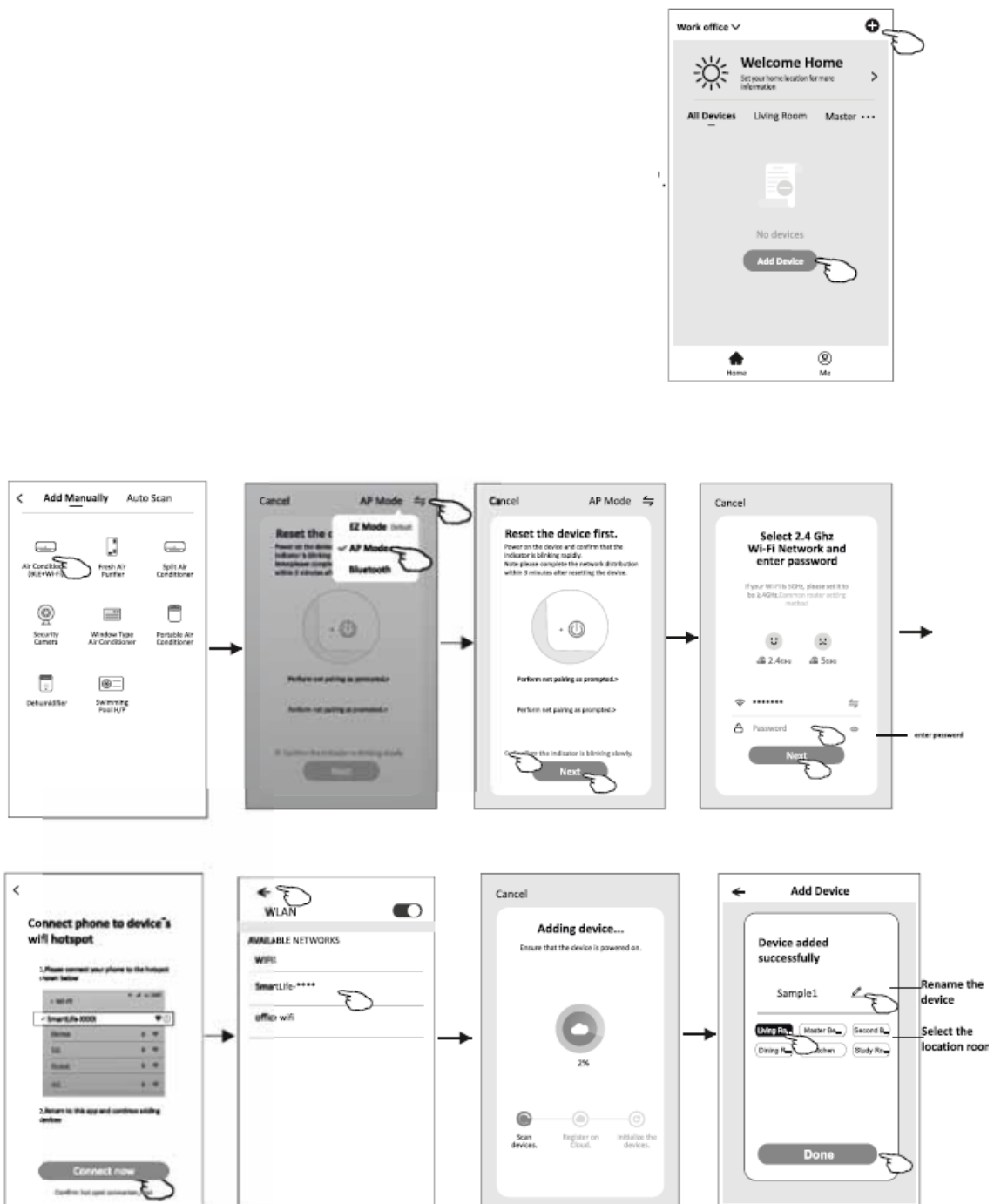


There are 3 methods to add the device.

2-AP mode

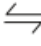
1. Power on the indoor unit, no need to launch the air conditioner.
2. Click “+” in the upper right corner of the “Home” screen or tap “Add device” on the room that has no device.

3. Tap the “Air conditioner(BLE+Wi-Fi)” logo.
4. Tap “⇌” in the upper right corner and choose “AP Mode”, then follow the comments on the screen to reset the Wi-Fi module, then check “Confirm the indicator is blinking slowly” and tap “Next”.
5. Input the password of the Wi-Fi which is the same as your smartphone’s connection, then tap “Next”.
6. Read the instructions carefully and tap “Connect now”.
7. In the network setting screen, select “Smartlife-****”, and tap “←”.
8. You can see the percentage rate of the connecting process, at the same time
 - “PP”, “SA”, “AP” shining in turn on the indoor display.
 - “PP” means “Searching the route,”
 - “SA” means “connected to the router
 - “AP” means “connected to the server”



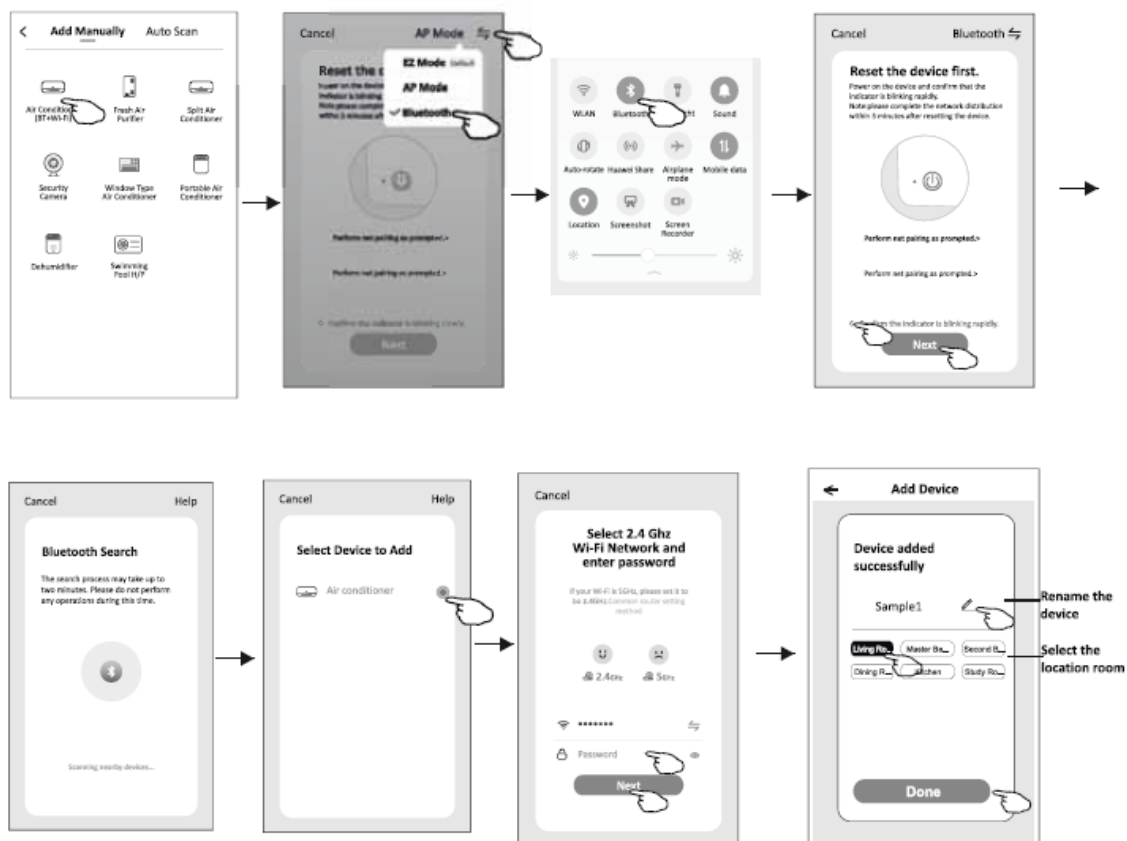
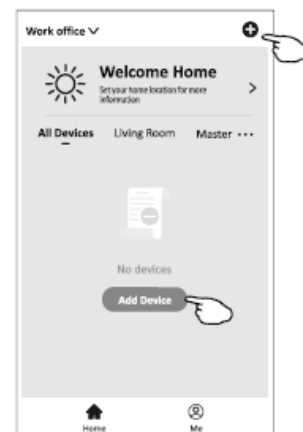
There are 3 methods to add the device.

3-Blue tooth mode

1. Power on the indoor unit, no need to launch the air conditioner.
2. Click “+” in the upper right corner of the “Home” screen or tap “Add device” on the room that has no device.
3. Tap the “Air conditioner(BT +Wi-Fi)” logo.
4. Make sure Bluetooth on your smartphone is available.
5. Tap  in the upper right corner and choose “Bluetooth”, then follow the instructions on the screen to reset the Wi-Fi module, then check “Confirm the indicator is blinking

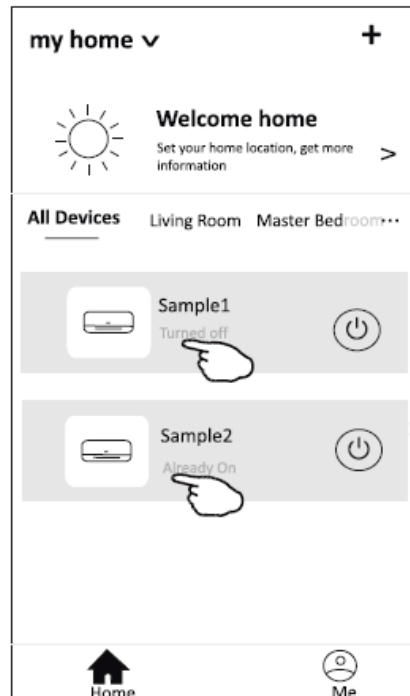
rapidly” and tap”Next”.

6. Select one of the found devices and tap ” +”
7. Input the password of the Wi-Fi which the same as your smartphone connection, then tap “Next”.
8. You can see the percentage rate of the connecting process, at the same time
 - “PP”, “SA”, “AP” shining in turn on the indoor display.
 - “PP” means “Searching the router.”
 - “SA” means “connected to the route.r”
 - “AP” means “connected to the server.”



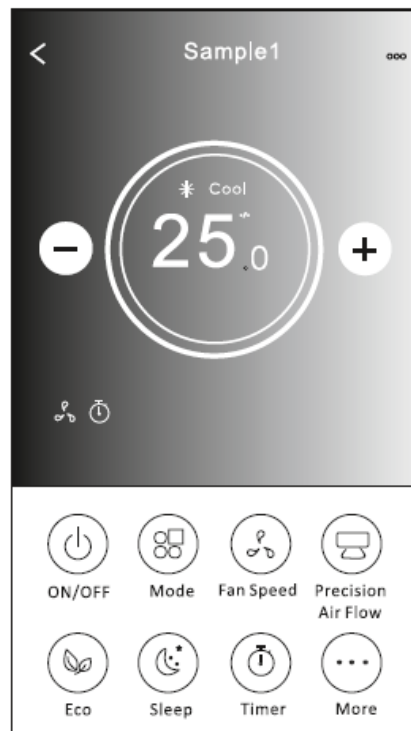
Air conditioner control

- The device control screen will pop up automatically after adding the device.
- The device control screen will pop up manually by tapping the device name on the home screen.



Note

- There are two different control forms based on different software or Wi-Fi module firmware.
- Please read the manual carefully based on the real control interface.

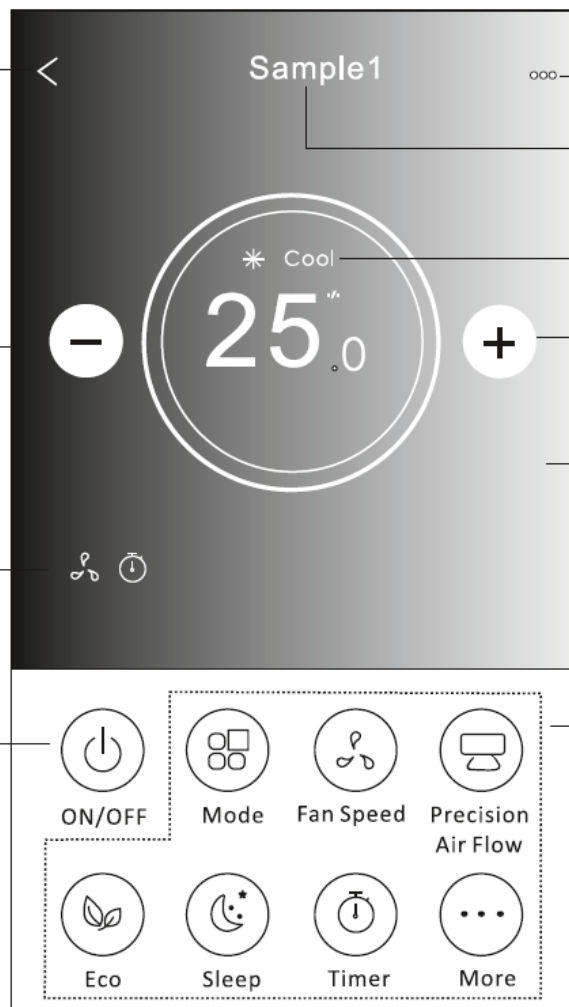


Back to the Home screen

Decrease the setting temperature

Selected Functions indicator

Power on/off



Tips

Name of the device

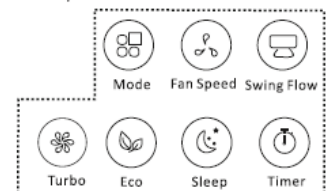
Current mode

Increase the setting temperature

Different background for different mode:
Cool/Heat/Dry/Fan/Auto

Function Buttons

Note: it may appear slightly different, depending on the air conditioner model.
Example as below:



Mode setting

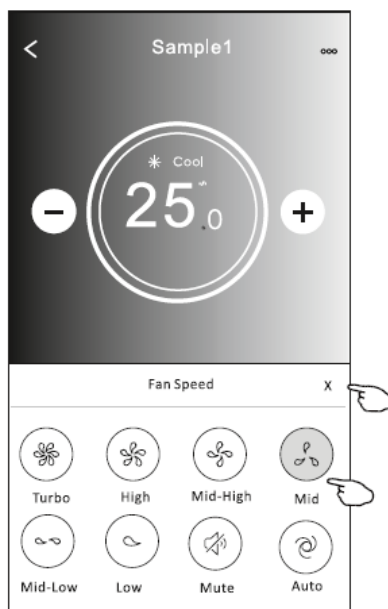
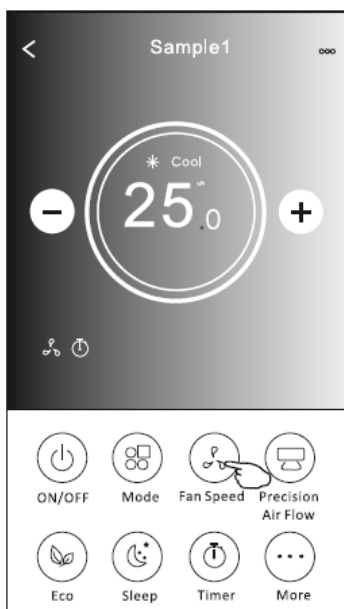
1. Tap the Mode button.
2. There are 5 modes on the Mode screen; tap one button to set the Air conditioner

working mode.

3. Tap the X button to go back to the main control screen.
4. The mode and background will change on the screen.

Fan speed selection

1. Tap the Fan speed button.
2. Choose your desired fan speed and tap it.
3. Tap the X button to go back to the main control screen.
4. The selected fan speed indicator will appear on the screen.

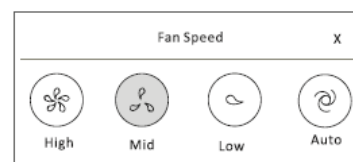


Mode	Fan Speed
Cool	All speeds
Fan	All speeds
Dry	
Heat	All speeds
Auto	All speeds

Note:

Fan Speed can't be adjusted on Dry mode .

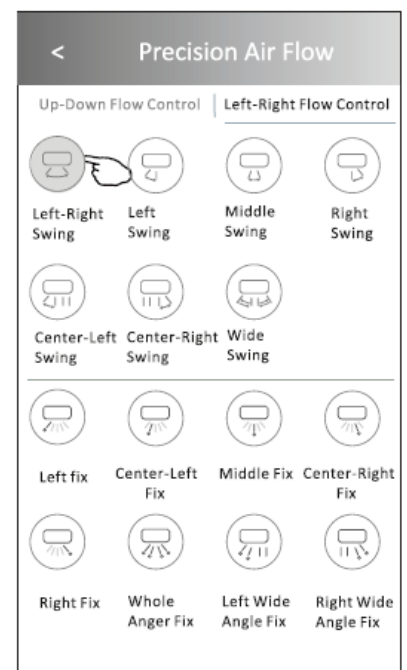
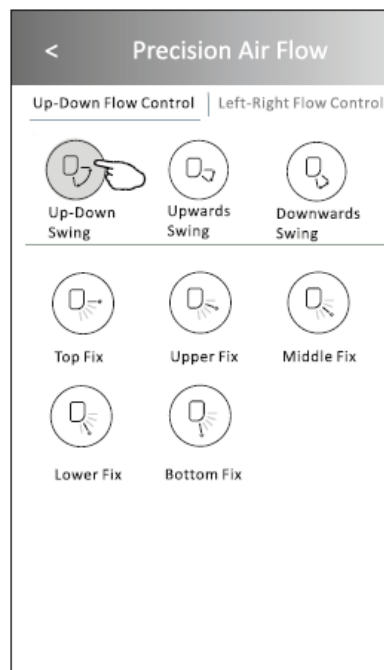
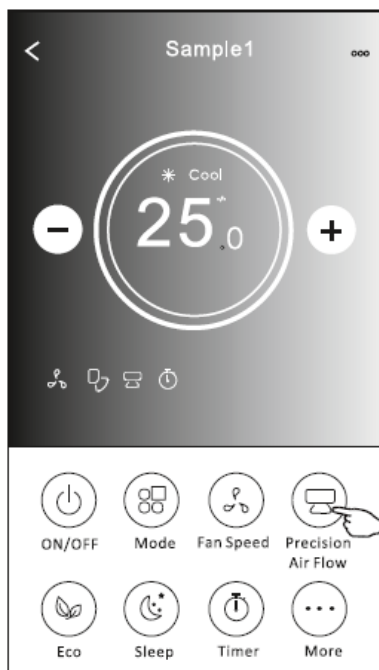
Note: Fan Speed screen may appear slightly different , depending on the air conditioner model.
Example as below:



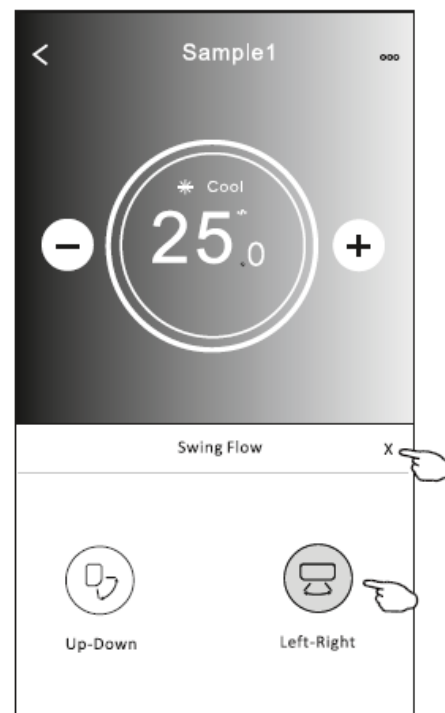
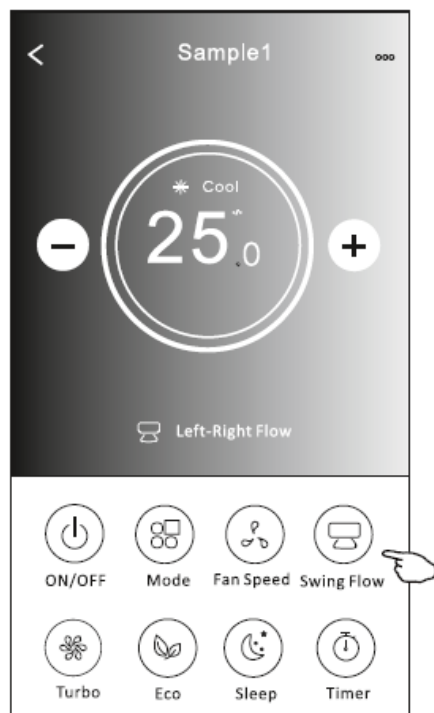
Air Flow Control

1. Tap the Precision Air Flow button or the Swing Flow button.
2. Choose your desired air flow and tap it.
3. Tap the X button to go back to the main control screen.
4. The selected air flow indicator will appear on the screen.

Note: For some models without auto Left-Right wind, if you activate it, you will hear a beep, but no other actions.



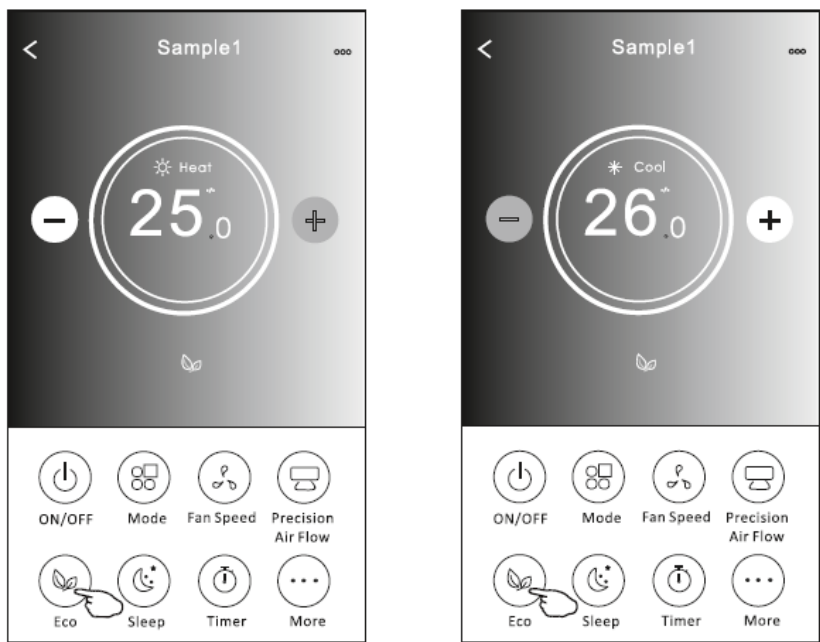
Note: The Main control screen and Air Flow screen may appear slightly different depending on the air conditioner model. Example as below:



ECO function

1. For the Eco function, just tap the button to activate the function; the button will be lit, and the indicator will appear on the screen.
2. Tap again to disable the function.
3. Temperature controlled for some air conditioner models:

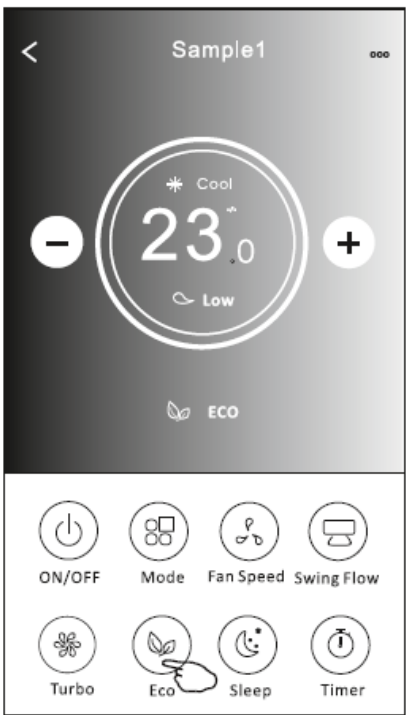
In Cooling mode, the new setting temperature will 26
In heating mode, the new setting temperature will 25'.



Mode	ECO enabled
Cool	Yes
Fan	
Dry	
Heat	Yes
Auto	

ECO is disabled on Fan/ Dry/Auto mode .

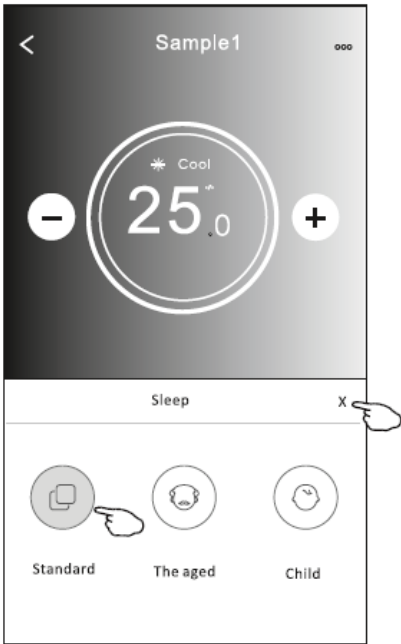
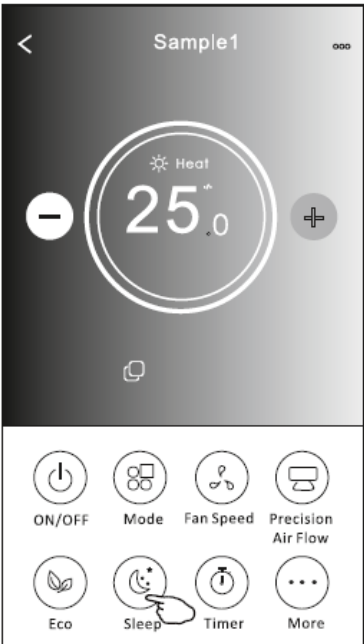
Note: The Main control screen and ECO control method may appear slightly different, depending on the air conditioner model.Example as below:



Note:
ECO is disabled on Turbo/Sleep mode too for some air conditioner models.

Sleep function

1. Tap the Sleep button.
2. Choose your desired sleep mode and tap it.
3. Tap the X button to go back to the main control screen.
4. The selected sleep mode indicator will appear on the screen.

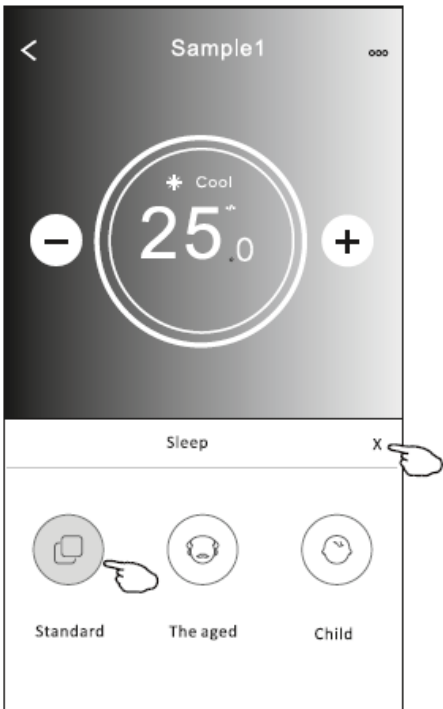
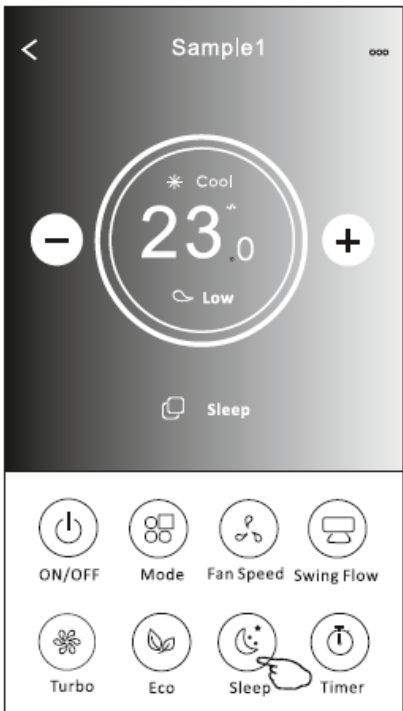


Mode	Sleep enabled
Cool	Yes
Fan	
Dry	
Heat	Yes
Auto	

Sleep is disabled on Fan/ Dry/Auto mode .

Note:

- The Main control screen may appear slightly different, depending on the air conditioner model.
- Example as below:

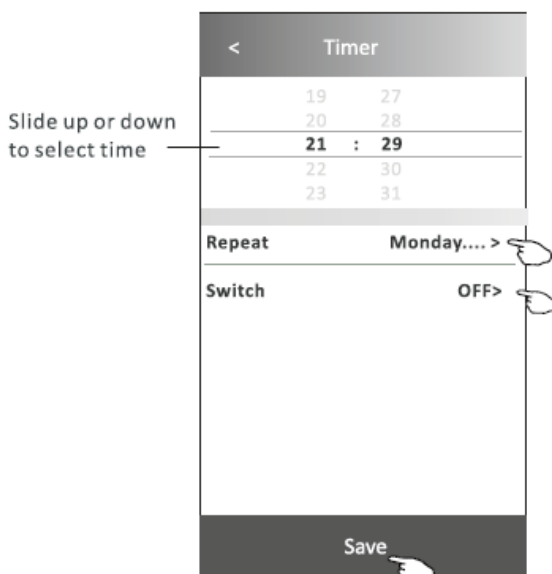
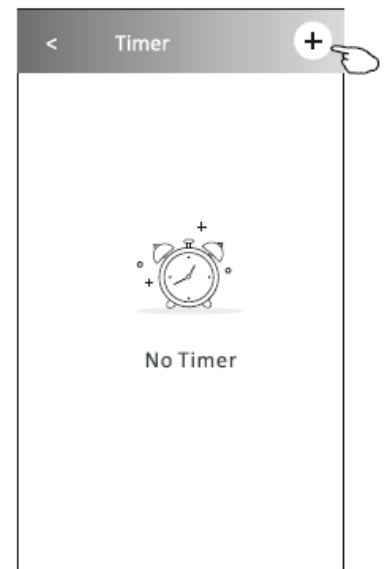
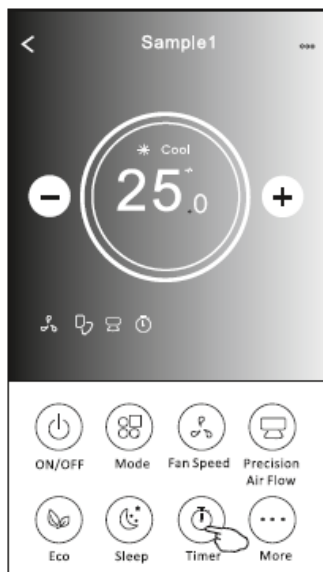


Note:

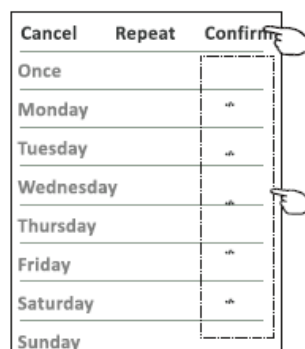
Sleep is disabled on Turbo/Sleep mode too for some air conditioner models.

Timer(on) setting

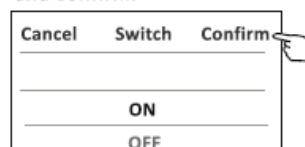
1. Tap the Timer button.
2. Tap + in the upper right corner of the Timer main screen.
3. Choose the Time/Repeat/Switch OFF, then tap Save.
4. The timer(off) will appear on the Timer main screen.



Tap repeat > then tap your desired repeat days or Once, then tap Confirm your selection.

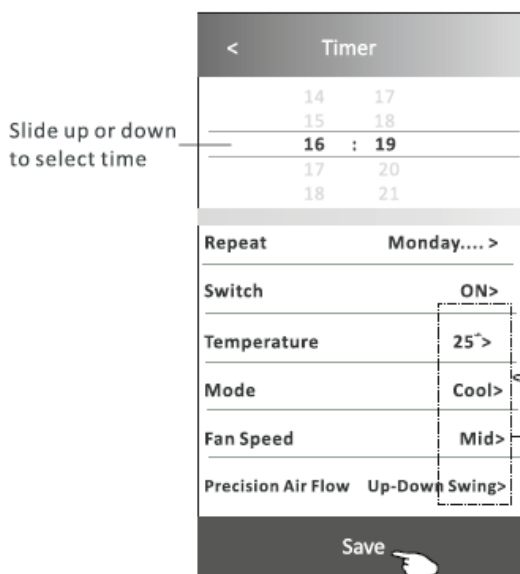
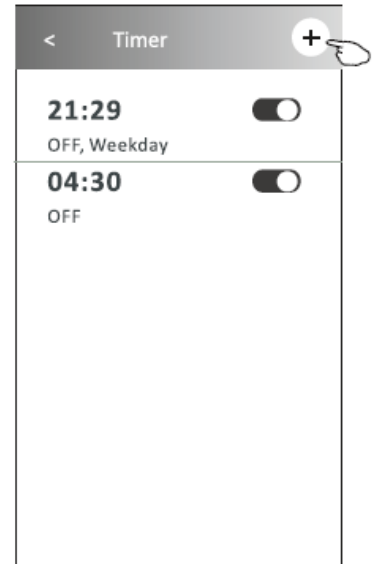
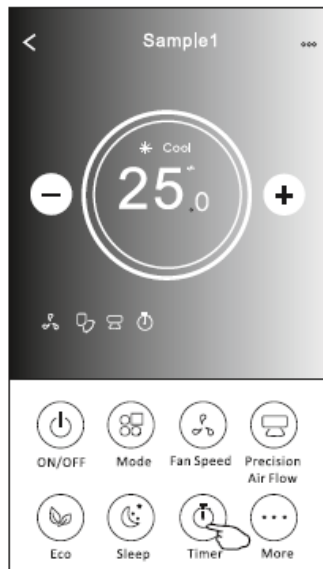


Tap Switch > then slide the screen to choose ON and Confirm.

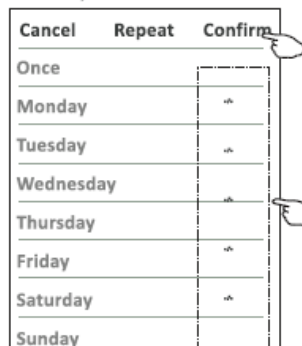


Timer(off) setting

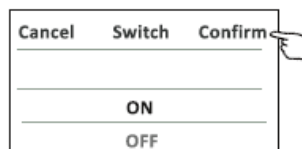
1. Tap the Timer button.
2. Tap + in the upper right corner of the Timer main screen.
3. Set the Time/Repeat Date/Switch(ON)/Temperature/Mode/
Fan speed/Air Flow as desired and then tap Save.
4. The timer will appear on the Timer main screen.



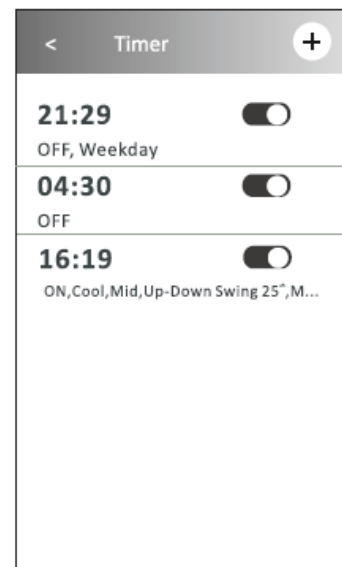
Tap repeat > then tap your desired repeat days or Once, then tap Confirm your selection.



Tap Switch > then slide the screen to choose ON and Confirm.



Tap Temperature/Mode/Fan Speed/Air Flow > one by one then set as your desired as mentioned on the previous chapter and tap Confirm the setting.



1. Change the Timer setting:

Tap anywhere on the timer list bar except the switch bar to get into the Timer setting screen, change the setting, and then tap save.

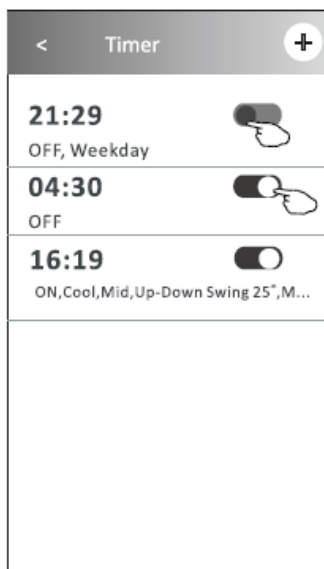
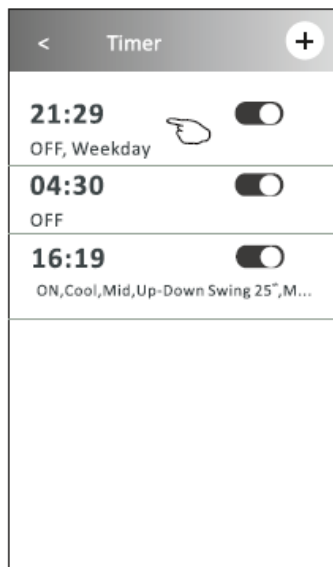
2. Enable or Disable the Timer:

Tap the left side of the switch to disable the Timer.

Tap the right side of the switch to enable the Timer.

3. Delete the Timer:

Slide the list bar of the Timer from right to left until the Delete button appears, then tap Delete.



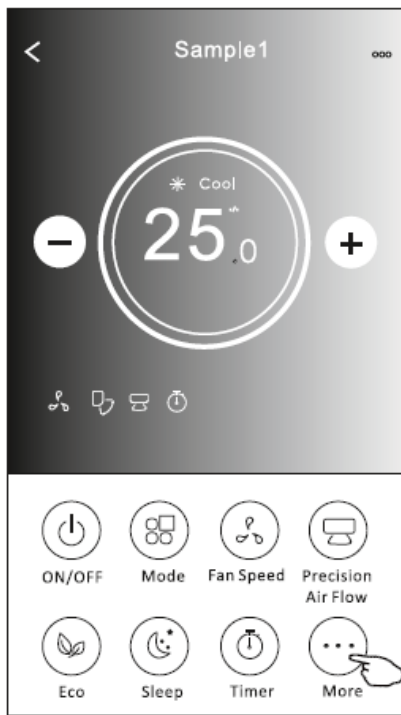
Slid left to disable the Timer.

Slid right to enable the Timer.

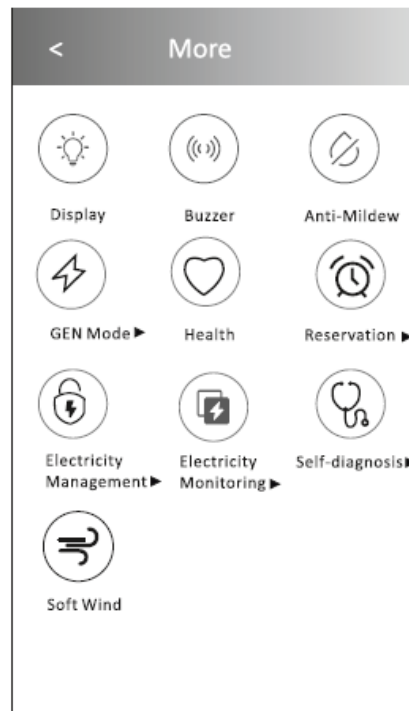


More functions

1. Tap the More button to operate additional functions if it appears on the screen.



Note:
Some air conditioner model
don't have the more button.



Note: The appearance maybe different , some icons
will be hidden if the air conditional do no have this
function or do not enable on the current mode.

2. Tap the “Display” to switch on/off the indoor LED display.



Display

3. Tap the “Buzzer” to switch on/off the buzzing when operating through the Wi-Fi APP



Buzzer

4. Tap the “Anti-Mildew” button to activate the Anti-Mildew function, if it is available on the screen.

After the AC turns off, it will start drying, reduce residual moisture, and prevent mould.
After the function finishes, it will automatically turn off.



Anti-Mildew

5. Tap the “Health” button to switch on/off the healthy function, if it is available on the screen.

It activates the antibacterial ioniser function. This function is only for models with the ioniser generator.

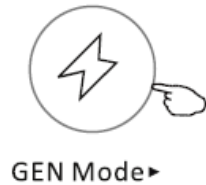


Health

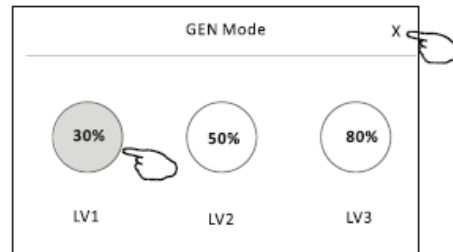
6. Tap the “GEN Mode” button if it is available on the screen.

In this Mode, you can choose one of the three levels of current.

The air conditioner will maintain proper current to save energy.



GEN Mode▶

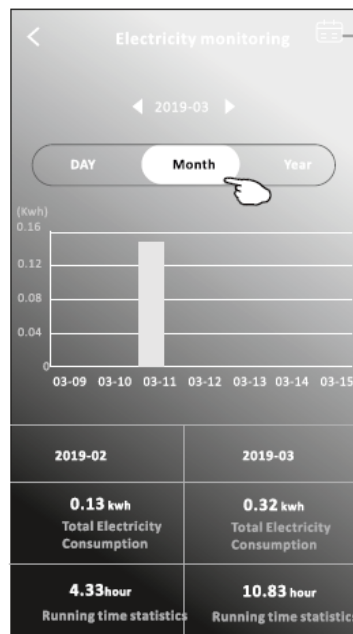
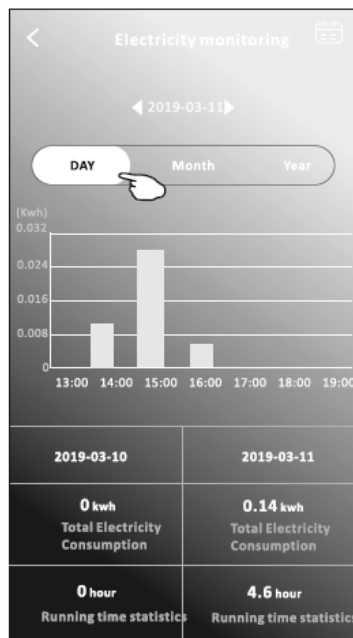


7. Tap the “Electricity Monitoring” button if it is available on the screen.

In this function, you can monitor the air conditioner’s electricity consumption.



Electricity
Monitoring ▶



You can tap this button to pop up the calendar then select the date.

8. Tap the “Self-Cleaning” button if it is available on the screen.

Check the details of the Self-Cleaning function in the User Manual.



Self-Cleaning

9. Tap the “Heat” button if it is available on the screen.

This function helps keep the room temperature above C.

Check the details of the Heat function in the User Manual.



8" Heat

10. Tap the “Reservation” button if it is available on the screen.

You can set the time, repeat day, temperature, mode, fan speed, and air flow as you desire and then tap Save to activate the function.

The air conditioner will automatically reach your settings at the appointment time.



Reservation ►

<

Reservation

14	17
15	18
16	: 19
17	20
18	21

Repeat setting

Monday.... >

Temperature

25°>

Mode

Cool>

Fan Speed

Mid>

Precision Air Flow

Up-Down Swing>

Save

<

Reservation

+

16:19:00

☐

ON,Cool,Mid,Up-Down Swing 25°,M...

After the reservation is set up, the air conditioner will automatically reach your set requirement at your appointment time.

- Tap the “Self-diagnosis” button if it is available on the screen.

The air conditioner will automatically diagnose itself and indicate the Error code and the problem instructions if possible.



Self-diagnosis ►

<

Self-diagnosis

48%

Checking

Cancel

<

Self-diagnosis

100%

Complete

Error code: E0
Indoor and outdoor
communication failure

OK

- Tap the “Photosensitive” button if it is available on the screen.

This function allows the air conditioner to turn on/off the display automatically according to the light intensity.



Photosensitive


13. Tap the “Soft wind” button if it is available on the screen.

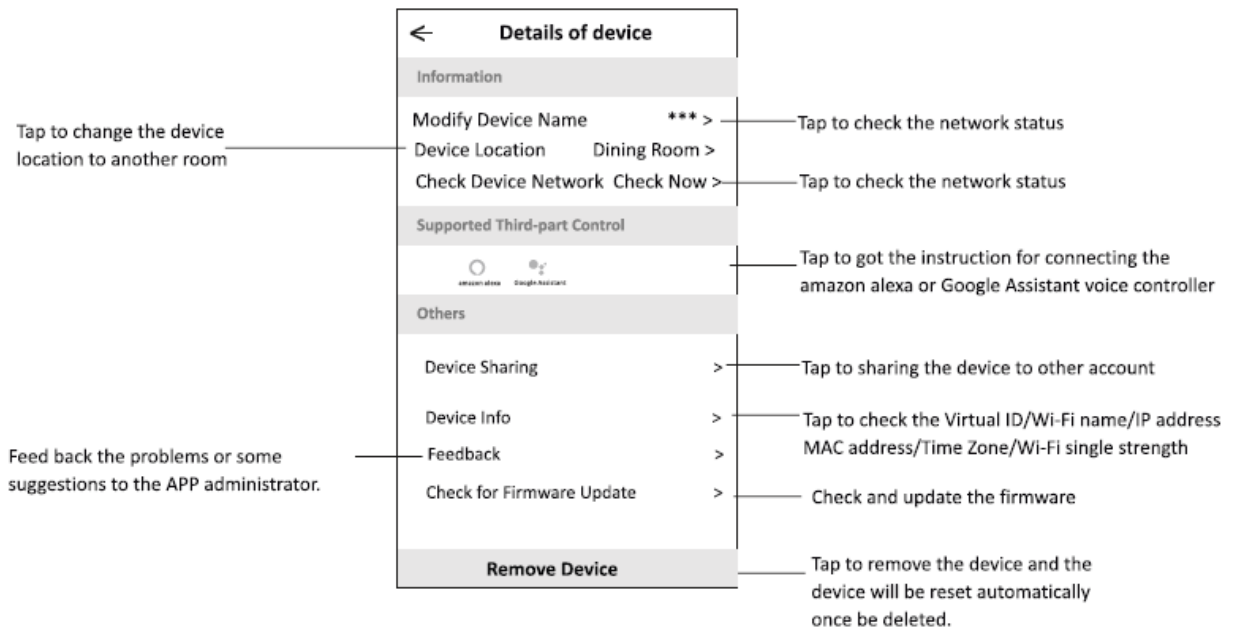
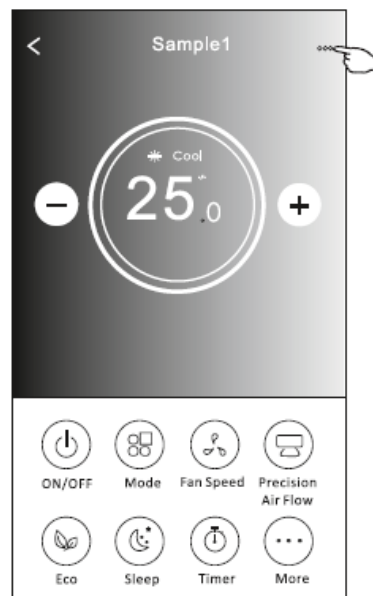
In this function, the air conditioner will blow soft airflow through the micro holes on the deflector.



Soft Wind

Device details and management

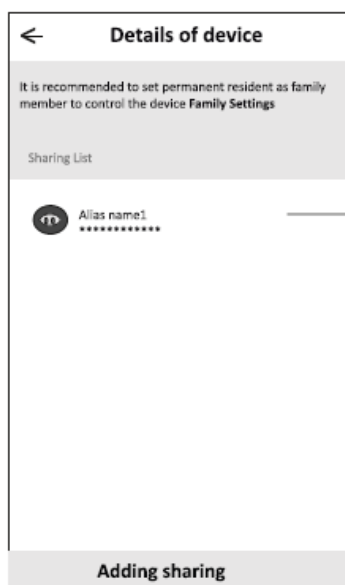
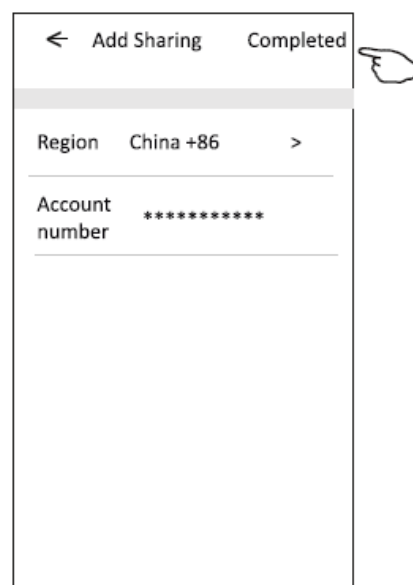
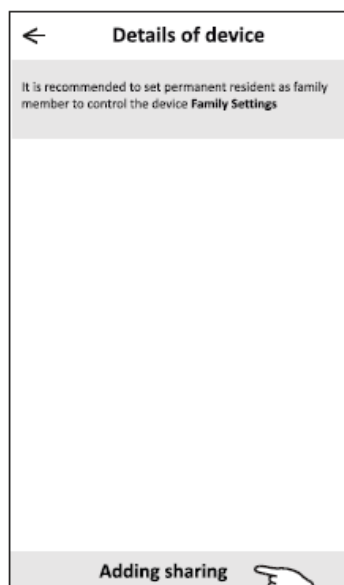
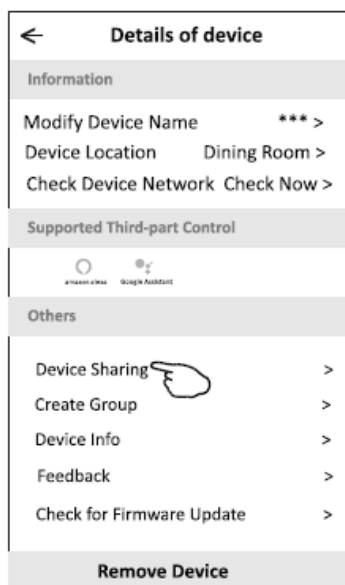
- Tap  on the control form or tap ... on control form2, get into the device details screen.
- Here you can get some useful information and share the device with other accounts.
- Check the following pictures and instructions carefully.



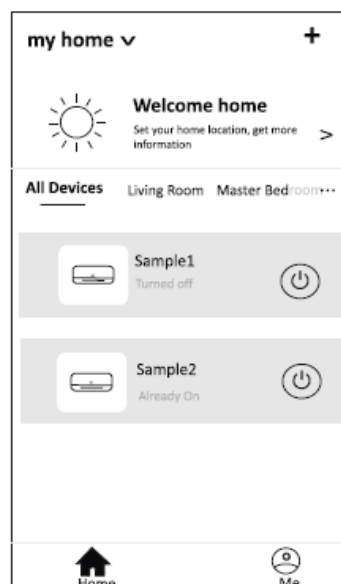
Device details and management

How to share the devices with other accounts?

1. Tap “Device Sharing” and pop up the Device Sharing screen.
2. Tap “Add Sharing”.
3. Select the region and enter the account that you want to share.
4. Tap “Completed”, and the account will appear on your sharing list.
5. The received sharing members should hold the home screen and slide down to refresh the device list; the device will appear on the device list.

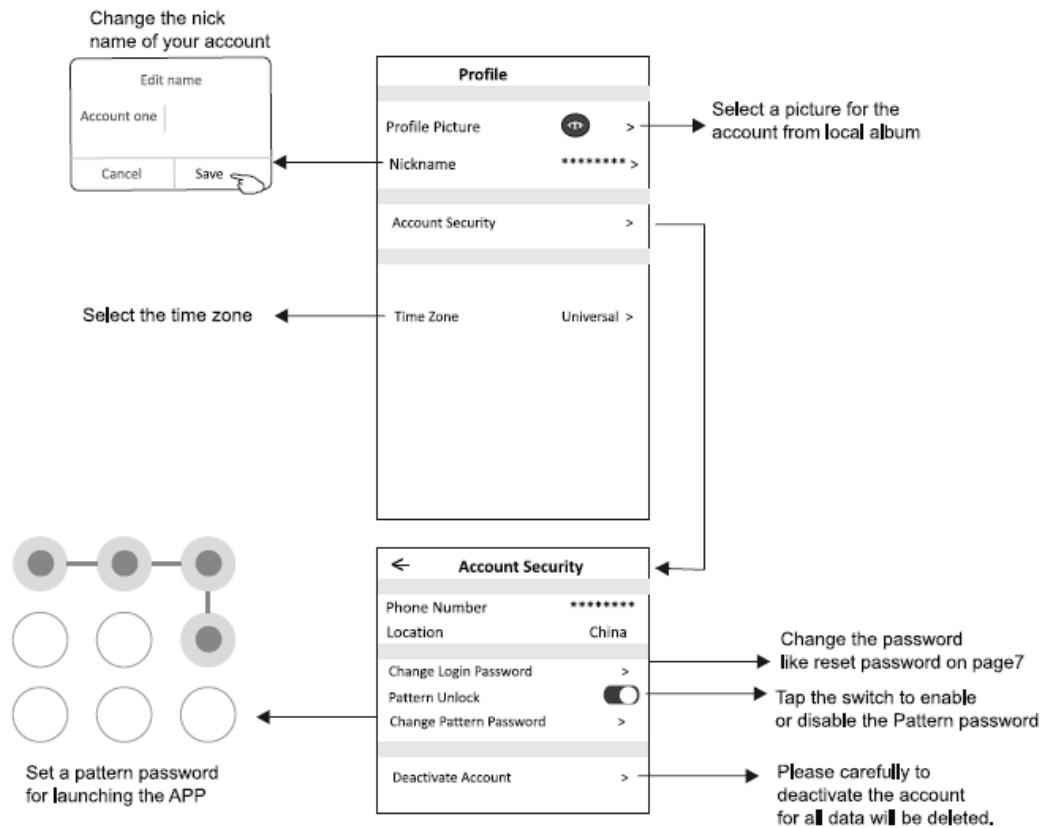
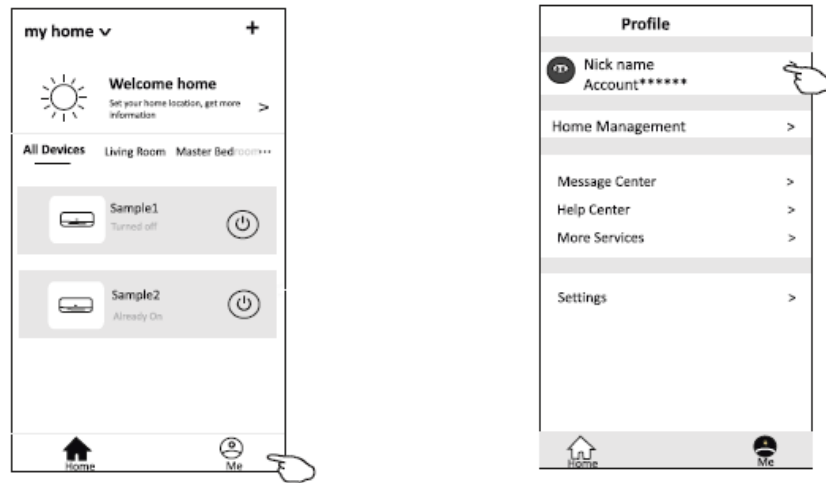


Hold the bar about 3s then you can delete the sharing account.



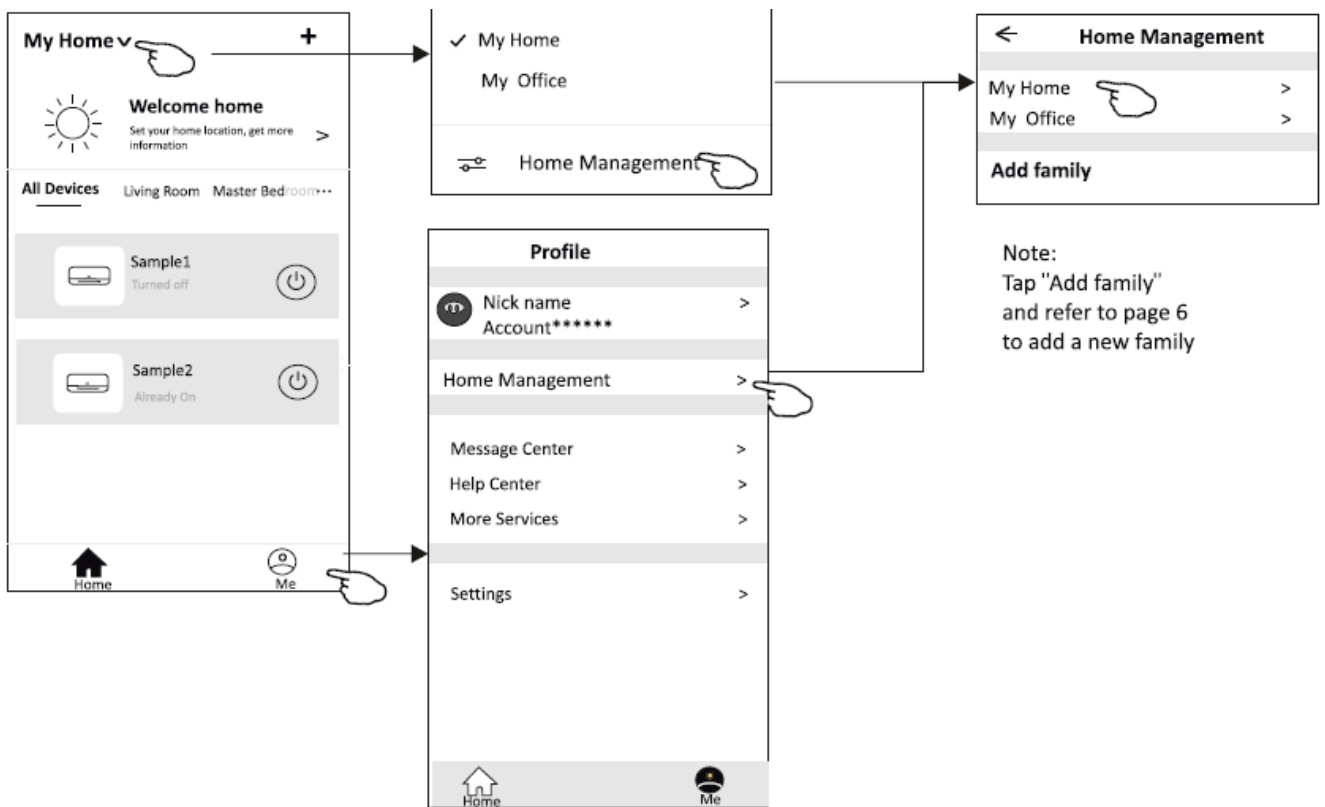
Hold on and slide down to refresh the device list

Account Profile settings

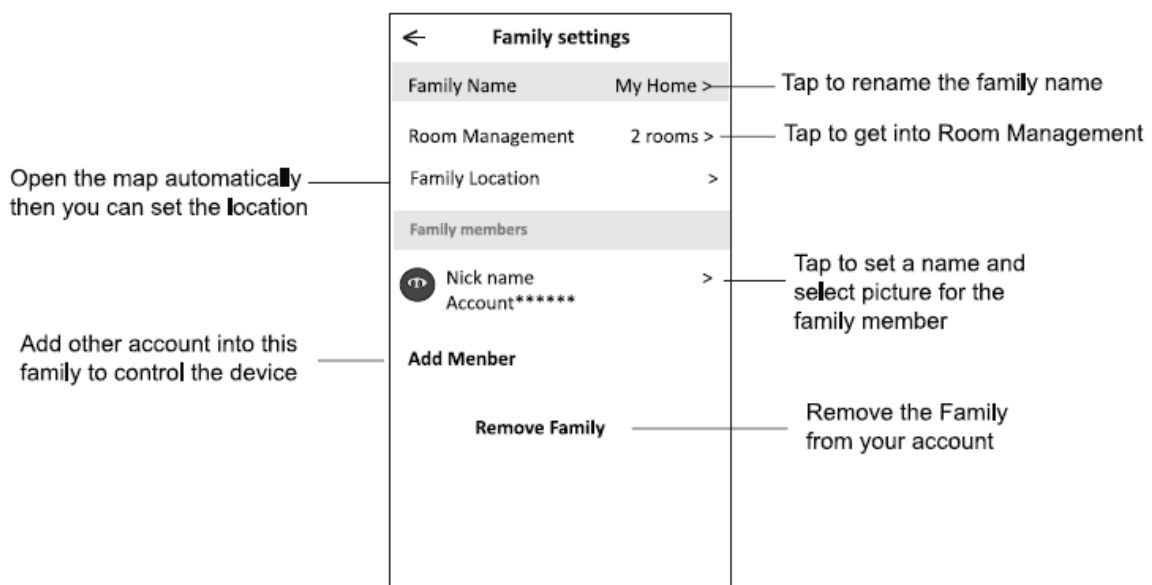


Home(Family) management

1. Tap the name of Home at the left upper corner of the Home Screen and select Home Management. Or tap Me and tap Home Management.
2. Tap one of the families in the family list and get into the Family Settings screen.



3. Set the family as the following indicators.



Notice

1. For a technical update, there may maybe a deviation of the actual items from what is in the manual.
Please refer to your actual product and APP.
2. Smart air conditioner APP can be altered without notice for quality improvement, and can also be deleted depending on the circumstances of manufacturing firms.
3. In case the Wi-Fi signal strength is weakened, the smart App may be disconnected.

So make sure the indoor unit is near to wireless router.

4. DHCP server function should be activated for the wireless router.
5. The internet connection may fail because of a firewall problem. In this case, contact your internet service provider.
6. For smartphone system security and network settings, make sure the Smart Air Conditioner APP is trusted.

Trouble Shooting

Description	Analysis of cause
Air conditioner can't be configured successfully	<ol style="list-style-type: none">1. Check the mobile connected WLAN router SSID and password is correct;2. Check whether there are additional settings of WLAN router as shown below.<ol style="list-style-type: none">1) Firewall by router itself or by PC2) MAC address filtering3) Hidden SSID4) DHCP server <p>Reboot WLAN router, mobile device and air conditioner (WLAN module) and connect air conditioner by CF mode again. Before rebooting, check nobody has already connected to same air conditioner.</p>
Mobile can't control air conditioner	<ol style="list-style-type: none">1. When air conditioner (WLAN module) is rebooted and app displays Device remove, ignoring this confirmation will lead to mobile device losing control permission of the air conditioner. You will need to connect the air conditioner by CF mode again.2. In case of power failure, mobile device will lose control permission of air conditioner for 3 minutes after power failure. (Notification will now show up on the mobile device.) <p>If you cannot control the app (air conditioner) even after power restored, you will need to connect the air conditioner by CF mode again.</p>
Mobile can't find air conditioner	<ol style="list-style-type: none">1. Smart Life App display Air conditioner Device offline. Please check the following conditions.<ol style="list-style-type: none">1) The air conditioner has been reconfigured.2) Air conditioner out of power.3) Router out of power.4) Air conditioner can't connect to router.5) Air conditioner can't connect to network through the router.6) Mobile device can't connect to network.2. After adding the device, it disappears in device list . <p>Hold and slide down to refresh the device list. If it has no change, shut down the app and start again.</p>

FCC STATEMENT

Federal Communication Commission Interference Statement

This device complies with part 15 of the FCC Rules. Operation is subject to the following two conditions:

1. This device may not cause harmful interference, and
2. This device must accept any interference received, including interference that may cause undesired operation.

Any Changes or modifications not expressly approved by the party responsible for compliance could void the user's authority to operate the equipment.

Note: This equipment has been tested and found to comply with the limits for a Class B digital device, pursuant to part 15 of the FCC Rules.

These limits are designed to provide reasonable protection against harmful interference in a residential installation. This equipment generates uses and can radiate radio frequency energy and, if not installed and used in accordance with the instructions, may cause harmful interference to radio communications. However, there is no guarantee that interference will not occur in a particular installation. If this equipment does cause harmful interference to radio or television reception, which can be determined by turning the equipment off and on, the user is encouraged to try to correct the interference by one or more of the following measures:

- Reorient or relocate the receiving antenna.
- Increase the separation between the equipment and receiver.
- Connect the equipment to an outlet on a circuit different from that to which the receiver is connected.
- Consult the dealer or an experienced radio/TV technician for help.

FCC Radiation Exposure Statement

This equipment complies with FCC radiation exposure limits set forth for an uncontrolled environment. This equipment should be installed and operated with a minimum distance 20cm between the radiator & your body.

RF Exposure: A distance of 20cm shall be maintained between the antenna and users, and the transmitter module may not be co-located with any other transmitter or antenna.

ISED Statement

Innovation, Science and Economic Development Canada ICES-003 Compliance Label:
CAN ICES-3 (B)/NMB-3(8)

This device contains licence-exempt transmitter(s)/receiver(s) that comply with

Innovation, Science and Economic Development Canada's licence-exempt RSS(s).
Operation is subject to the following two conditions:


1. This device may not cause interference.
2. This device must accept any interference, including interference that may cause undesired operation of the device.

This equipment complies with ISED RSS-102 radiation exposure limits set forth for an uncontrolled environment. This equipment should be installed and operated with a minimum distance of 20cm between the radiator and any part of your body.

CONTACT

- Kalliopi Karyda & Co., LP
- 87A, 17 is Noemvriou str.
- 55535, pylea, Greece
- Tel. 2316 006600
- www.fandu.gr

Documents / Resources

	F and U PRO Series Wi-Fi Function [pdf] User Manual PRO Series Wi-Fi Function, PRO Series, Wi-Fi Function, Function
---	--

References

- [User Manual](#)

■ F and U ♦ F and U, function, Pro Series, PRO Series Wi-Fi Function, Wi-Fi Function

Leave a comment

Your email address will not be published. Required fields are marked *

Comment *

Name

Email

Website

☐ Save my name, email, and website in this browser for the next time I comment.

Post Comment

Search:

Search

[Manuals+](#) | [Upload](#) | [Deep Search](#) | [Privacy Policy](#) | [@manuals.plus](#) | [YouTube](#)

This website is an independent publication and is neither affiliated with nor endorsed by any of the trademark owners. The "Bluetooth®" word mark and logos are registered trademarks owned by Bluetooth SIG, Inc. The "Wi-Fi®" word mark and logos are registered trademarks owned by the Wi-Fi Alliance. Any use of these marks on this website does not imply any affiliation with or endorsement.