

EZVIZ LC3 Security Camera User Manual

[Home](#) » [ezviz](#) » EZVIZ LC3 Security Camera User Manual 

EZVIZ LC3 Security Camera User Manual

COPYRIGHT © Hangzhou EZVIZ Software Co., Ltd.. ALL RIGHTS RESERVED.

Any and all information, including, among others, wordings, pictures, graphs are the properties of Hangzhou EZVIZ Software Co., Ltd. (hereinafter referred to as “EZVIZ”). This user manual (hereinafter referred to as “the Manual”) cannot be reproduced, changed, translated, or distributed, partially or wholly, by any means, without the prior written permission of EZVIZ. Unless otherwise stipulated, EZVIZ does not make any warranties, guarantees or representations, express or implied, regarding to the Manual.


About this Manual

The Manual includes instructions for using and managing the product. Pictures, charts, images and all other information hereinafter are for description and explanation only. The information contained in the Manual is subject to change, without notice, due to firmware updates or other reasons. Please find the latest version in the EZVIZ™ website (<http://www.ezviz.com>).

Revision Record

New release January, 2019

Trademarks Acknowledgement

 and other EZVIZ's trademarks and logos are the properties of EZVIZ in various jurisdictions. Other trademarks and logos mentioned below are the properties of their respective owners.

Legal Disclaimer

TO THE MAXIMUM EXTENT PERMITTED BY APPLICABLE LAW, THE PRODUCT DESCRIBED, WITH ITS HARDWARE, SOFTWARE AND FIRMWARE, IS PROVIDED “AS IS”, WITH ALL FAULTS AND ERRORS, AND EZVIZ MAKES NO WARRANTIES, EXPRESS OR IMPLIED, INCLUDING WITHOUT LIMITATION,

MERCHANTABILITY, SATISFACTORY QUALITY, FITNESS FOR A PARTICULAR PURPOSE, AND NON-INFRINGEMENT OF THIRD PARTY. IN NO EVENT WILL EZVIZ, ITS DIRECTORS, OFFICERS, EMPLOYEES, OR AGENTS BE LIABLE TO YOU FOR ANY SPECIAL, CONSEQUENTIAL, INCIDENTAL, OR INDIRECT DAMAGES, INCLUDING, AMONG OTHERS, DAMAGES FOR LOSS OF BUSINESS PROFITS, BUSINESS INTERRUPTION, OR LOSS OF DATA OR DOCUMENTATION, IN CONNECTION WITH THE USE OF THIS PRODUCT, EVEN IF EZVIZ HAS BEEN ADVISED OF THE POSSIBILITY OF SUCH DAMAGES.

TO THE MAXIMUM EXTENT PERMITTED BY APPLICABLE LAW, IN NO EVENT SHALL EZVIZ'S TOTAL LIABILITY FOR ALL DAMAGES EXCEED THE ORIGINAL PURCHASE PRICE OF THE PRODUCT.

EZVIZ DOES NOT UNDERTAKE ANY LIABILITY FOR PERSONAL INJURY OR PROPERTY DAMAGE AS THE RESULT OF PRODUCT INTERRUPTION OR SERVICE TERMINATION CAUSED BY: A) IMPROPER INSTALLATION OR USAGE OTHER THAN AS REQUESTED; B) THE PROTECTION OF NATIONAL OR PUBLIC INTERESTS; C) FORCE MAJEURE; D) YOURSELF OR THE THIRD PARTY, INCLUDING WITHOUT LIMITATION, USING ANY THIRD PARTY'S PRODUCTS, SOFTWARE, APPLICATIONS, AND AMONG OTHERS. REGARDING TO THE PRODUCT WITH INTERNET ACCESS, THE USE OF PRODUCT SHALL BE WHOLLY AT YOUR OWN RISKS. EZVIZ SHALL NOT TAKE ANY RESPONSIBILITIES FOR ABNORMAL OPERATION, PRIVACY LEAKAGE OR OTHER DAMAGES RESULTING FROM CYBER ATTACK, HACKER ATTACK, VIRUS INSPECTION, OR OTHER INTERNET SECURITY RISKS; HOWEVER, EZVIZ WILL PROVIDE TIMELY TECHNICAL SUPPORT IF REQUIRED. SURVEILLANCE LAWS AND DATA PROTECTION LAWS VARY BY JURISDICTION. PLEASE CHECK ALL RELEVANT LAWS IN YOUR JURISDICTION BEFORE USING THIS PRODUCT IN ORDER TO ENSURE THAT YOUR USE CONFORMS TO THE APPLICABLE LAW. EZVIZ SHALL NOT BE LIABLE IN THE EVENT THAT THIS PRODUCT IS USED WITH ILLEGITIMATE PURPOSES. IN THE EVENT OF ANY CONFLICTS BETWEEN THE ABOVE AND THE APPLICABLE LAW, THE LATTER PREVAILS.

Contents

[1 Package Contents](#)

[2 Basics](#)

[3 Installation](#)

[4 Setup](#)

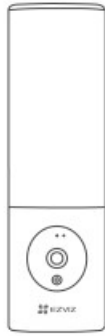
[5 EXPOSURE TO RADIOFREQUENCY RF](#)

[6 INFORMATION FOR PRIVATE HOUSEHOLDS](#)

[7 Documents / Resources](#)

[7.1 References](#)

Package Contents



Camera (x1)



Drill Template (x1)

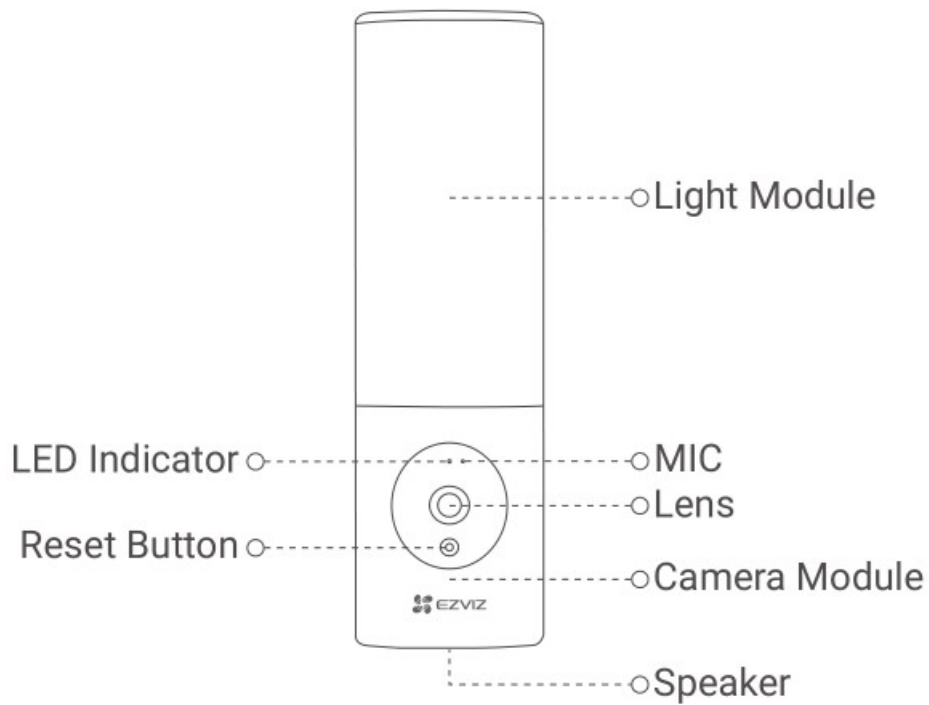


Screw Kit (x1)



Quick Start Guide (x1)

Basics

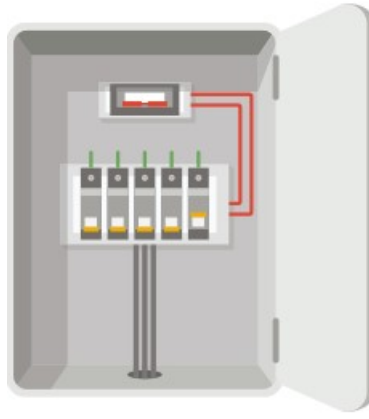


Name	Description
LED Indicator	<ul style="list-style-type: none">• Solid Red: Camera starting up.• Slow-flashing Red: Wi-Fi connection failed.• Fast-flashing Red: Camera exception (e.g. memory card error).• Solid Blue: Video being live viewed in the EZVIZ app.• Slow-flashing Blue: Camera running properly.• Fast-flashing Blue: Camera ready for Wi-Fi connection.
Lens	The lens can be adjusted 15 degrees downwards.
Camera Module	The camera module can be rotated 10 degrees left and right.
Reset Button	Hold for 4 seconds to restart and reset all parameters to default.

Installation

- Recommended installation height: 6-7 ft (1.8-2.2 m) above the ground.
- The camera has a built-in memory card for video storage. There is no need to install an additional SD card.

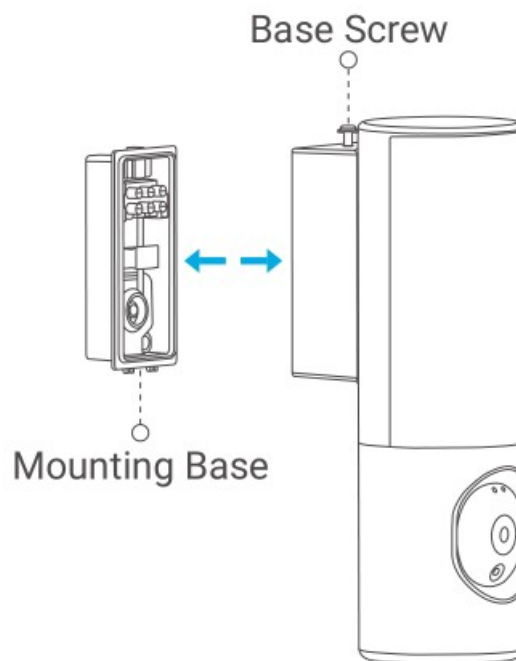
1. Shut off the electricity at the breaker.



- If you don't know where your breaker is or how to turn off power, please consult with a licensed electrician.
- Keep the breaker off at any time during the installation process.

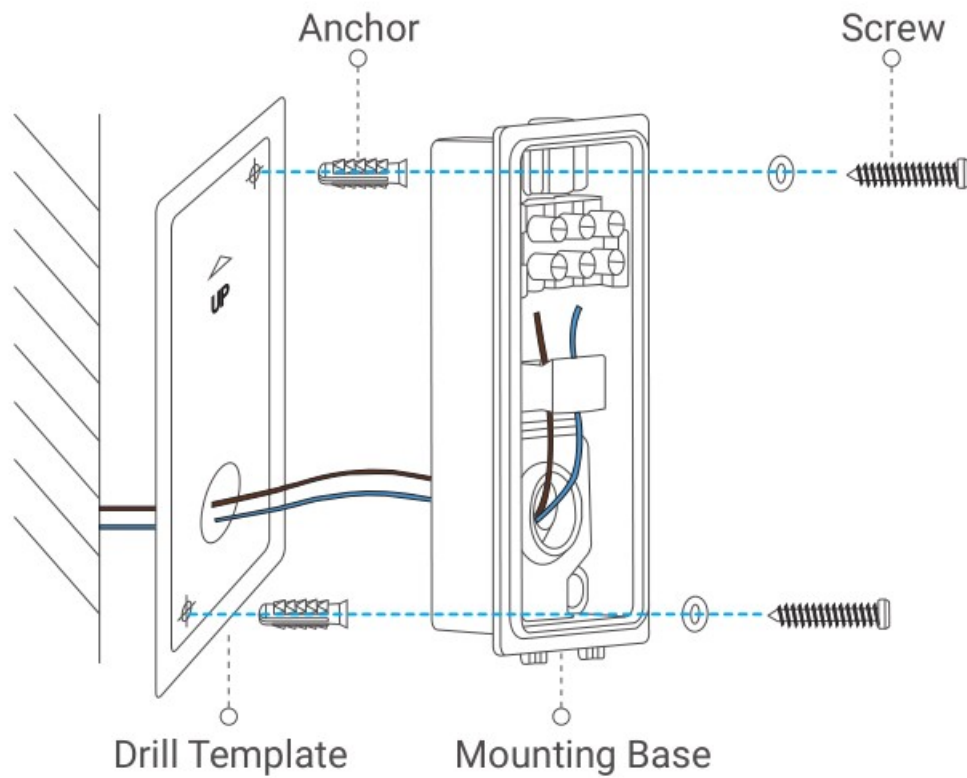
2. Separate the mounting base from camera.

Unscrew the base screw using screwdriver (not included in the package) and pull the mounting base off the camera.



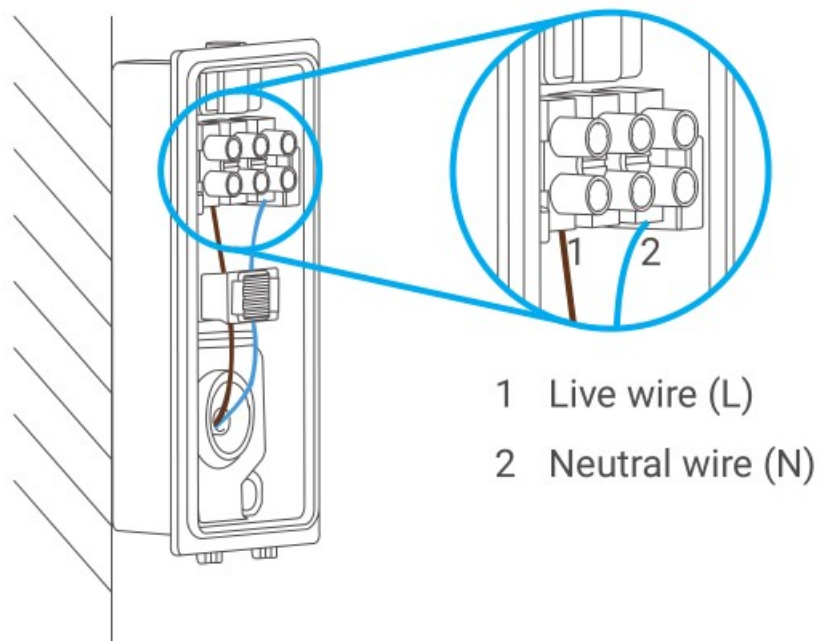
3. Install the mounting base.

- Place drill template onto the surface you have chosen to mount the base.
- (For cement wall only) Drill screw holes according to the template and insert anchors.
- Take the wires from the wall through the drill template and the rubber of the mounting base.
- Use screws to fix the mounting base.



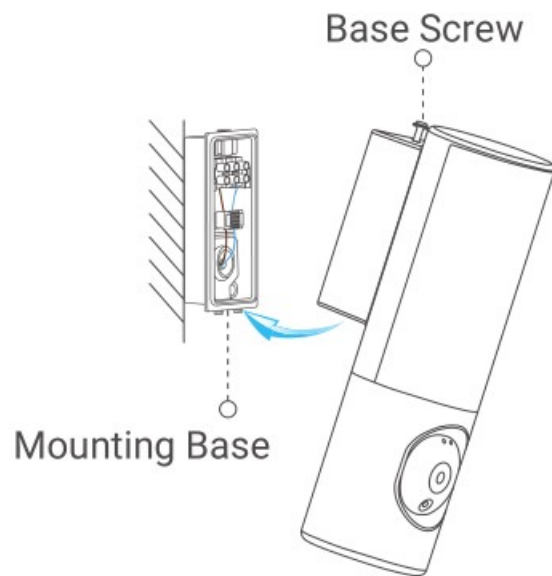
4. Connect the wires.

- Connect the Neutral wire (N) and Live wire (L) one by one.
- Secure them using screwdriver.



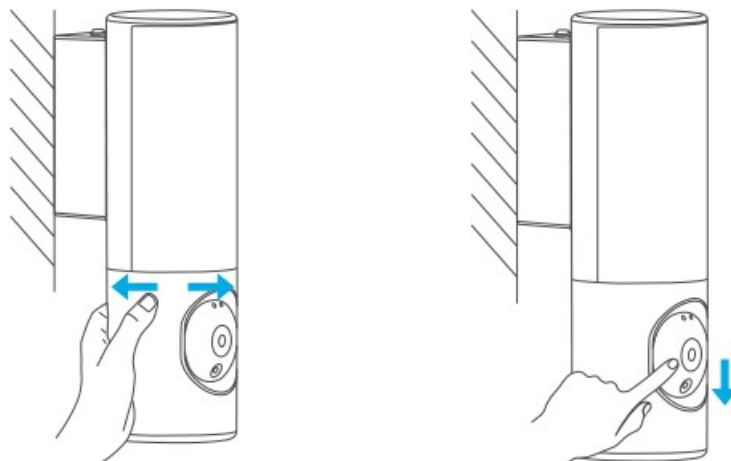
5. Insert the camera to the mounting base.

- Buckle the bottom of the mounting base into the camera.
- Press the mounting base and camera together.
- Tighten the base screw located on the top of the camera.

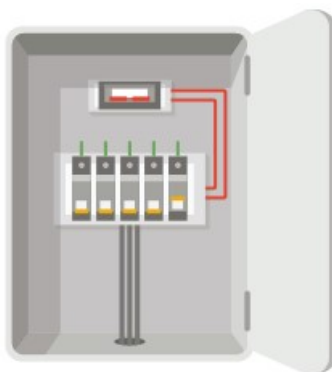


6. Adjust camera module's angle.

You can adjust the horizontal and vertical angle of the camera module as needed.

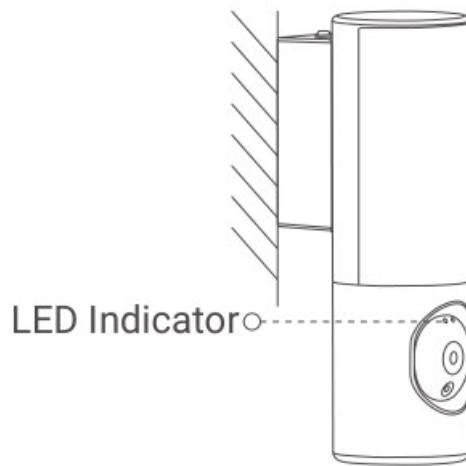


7. Restore power at the breaker.



8. Confirm the camera has power.

After restoring power, the camera will be ready for setup when the light is on and the LED Indicator on the front of the camera fast flashes blue.



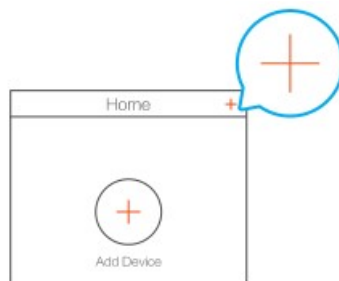
Setup

1. Get the EZVIZ app

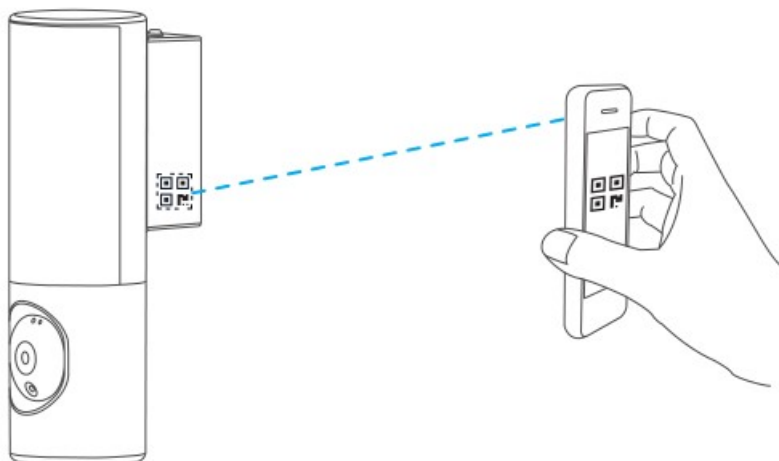
- Connect your mobile phone to Wi-Fi.
- Download and install the EZVIZ app by searching “EZVIZ” in the [App Store](#) or [Google Play Store™](#).
- Launch the app and register an EZVIZ user account.

2. Add camera to EZVIZ

- Log in to your account using the EZVIZ app.
- On the Home screen, tap “+” on the upper-right corner to go to the Scan QR Code interface.



- Scan the QR code on the Quick Start Guide cover or on the body of the camera.



- Follow the EZVIZ app wizard to finish Wi-Fi configuration.

If you want to change your camera's Wi-Fi, press and hold the reset button for 4s and repeat the steps above.

EXPOSURE TO RADIOFREQUENCY RF

The frequency bands and the nominal limits of transmitted power (radiated and/or conducted) applicable to this radio device are the following:

Band	Wi-Fi 2.4 GHz
Frequency	From 2.4 GHz to 2.4835 GHz
Power transmission (EIRP)	100 mW

For detailed information, please refer to www.ezviz.com.

INFORMATION FOR PRIVATE HOUSEHOLDS

1. Separate collection of waste equipment: Electrical and electronic equipment that has become waste is referred to as waste equipment. Owners of waste equipment must dispose of it separately from unsorted municipal waste. In particular, waste equipment does not belong in household waste, but in special collection and return systems.
2. Batteries and rechargeable batteries as well as lamps: Owners of waste equipment shall, as a rule, separate waste batteries and rechargeable batteries that are not enclosed in the waste equipment, which can be removed from the waste equipment without being destroyed, from the waste equipment before handing them in at a collection point. This does not apply if waste equipment is prepared for reuse with the participation of a public waste management authority.
3. Options for returning waste equipment: Owners of waste equipment from private households can return it free of charge to the collection points of the public waste management authorities or to the take-back points set up by manufacturers or distributors within the meaning of the Electrical and Electronics Equipment Law. Stores with a sales area of at least 400 m² for electrical and electronic equipment and those grocery stores with a total sales area of at least 800 m² that offer electrical and electronic equipment several times a year or on a permanent basis and make it available in the market are required to take it back. This also applies in the case of distribution using means of distance communication, if the storage and shipping areas for electrical and electronic equipment are at least 400 m² or the total storage and shipping areas are at least 800 m². Distributors shall, in principle, ensure take-back by providing suitable return facilities at a reasonable distance from the respective end user. The possibility of returning waste equipment free of charge exists for distributors who are obliged to take it back, among other things, if a new similar device that essentially fulfills the same functions is delivered to an end user.
4. Privacy Notice: Waste equipment often contains sensitive personal data. This applies in particular to devices of information and telecommunications technology such as computers and smartphones. In your own interest, please note that each end user is responsible for deleting the data on the waste equipment to be disposed of.
5. Meaning of the symbol "crossed-out wheellie bin": The symbol of a crossedout wheellie bin regularly depicted on electrical and electronic equipment indicates that the respective device is to be collected separately from unsorted municipal waste at the end of its service life.

Documents / Resources

EZVIZ LC3 Security Camera [pdf] User Manual
LC3 Security Camera, LC3, Security Camera, Camera

Manuals+,