



EZVIZ LC3 2K Floodlight Weatherproof Security Camera User Guide

[Home](#) » [ezviz](#) » EZVIZ LC3 2K Floodlight Weatherproof Security Camera User Guide 

EZVIZ LC3 2K Floodlight Weatherproof Security Camera User Guide



Contents

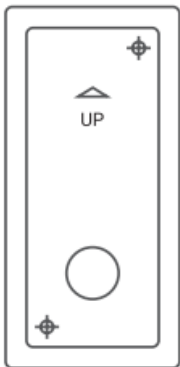
- [1 Package Contents](#)
- [2 Basics](#)
- [3 Installation](#)
- [4 Setup](#)
- [5 EXPOSURE TO RADIOFREQUENCY RF](#)
- [6 Documents / Resources](#)
 - [6.1 References](#)
- [7 Related Posts](#)

Package Contents

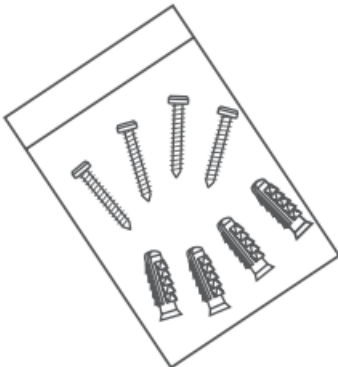
- **Camera (x1)**



- **Drill Template (x1)**



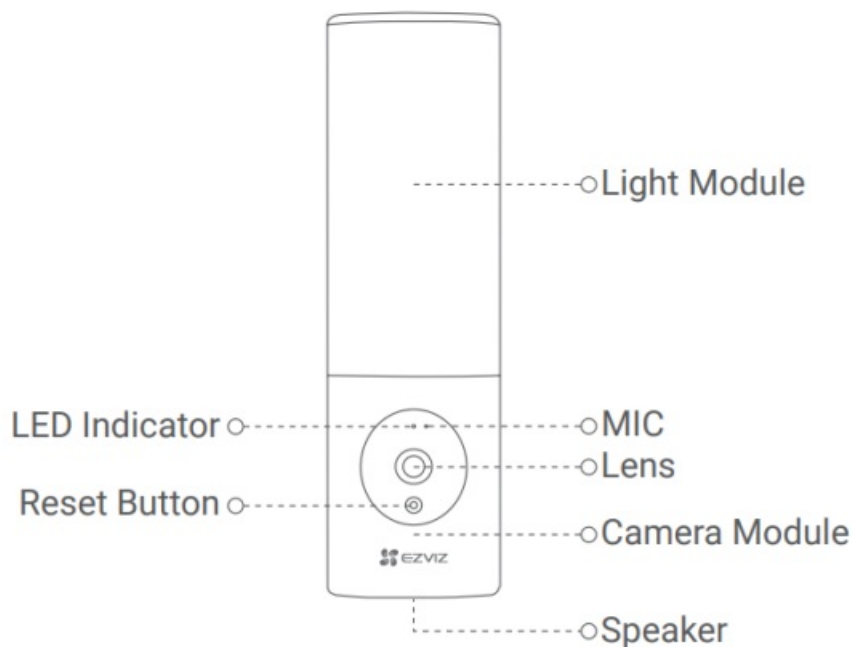
- **Screw Kit (x1)**



- **Quick Start Guide (x1)**



Basics

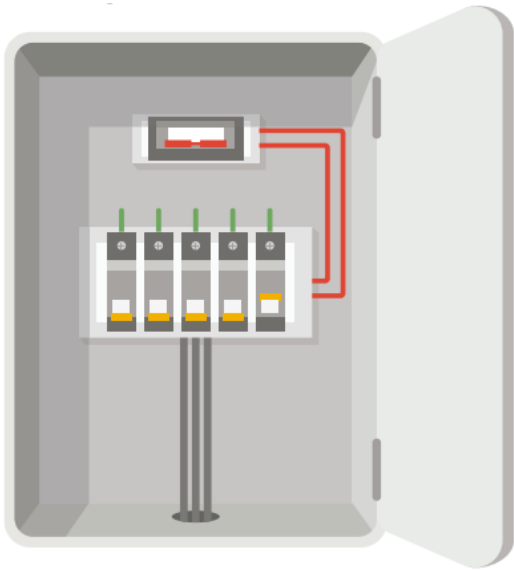


| Name | Description |
|---------------|--|
| LED Indicator | <ul style="list-style-type: none">• Solid Red: Camera starting up.• Slow-flashing Red: Wi-Fi connection failed.• Fast-flashing Red: Camera exception (e.g. memory card error).• Solid Blue: Video being live viewed in the EZVIZ app.• Slow-flashing Blue: Camera running properly.• Fast-flashing Blue: Camera ready for Wi-Fi connection. |
| Lens | The lens can be adjusted 15 degrees downwards |
| Camera Module | The camera module can be rotated 10 degrees left and right |
| Reset Button | Hold for 4 seconds to restart and reset all parameters to default. |

Installation

- Recommended installation height: 6-7 ft (1.8-2.2 m) above the ground.
- The camera has a built-in memory card for video storage. There is no need to install an additional SD card.

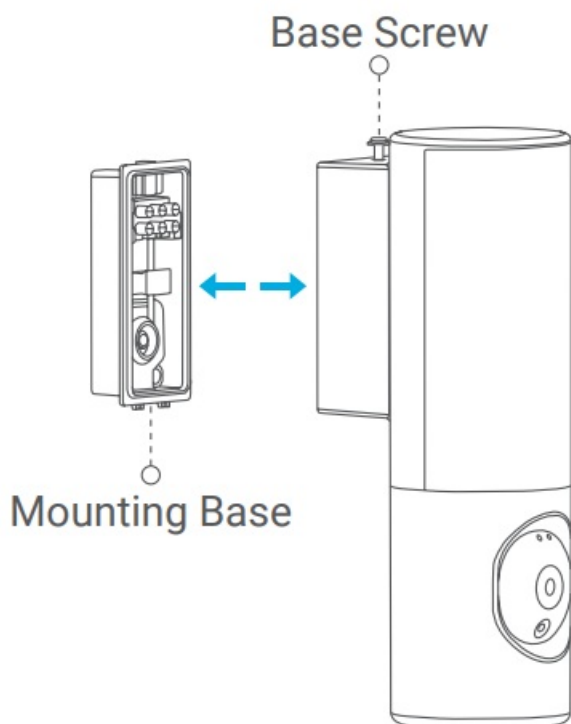
Shut off the electricity at the breaker



- If you don't know where your breaker is or how to turn off power, please consult with a licensed electrician.
- Keep the breaker off at any time during the installation process.

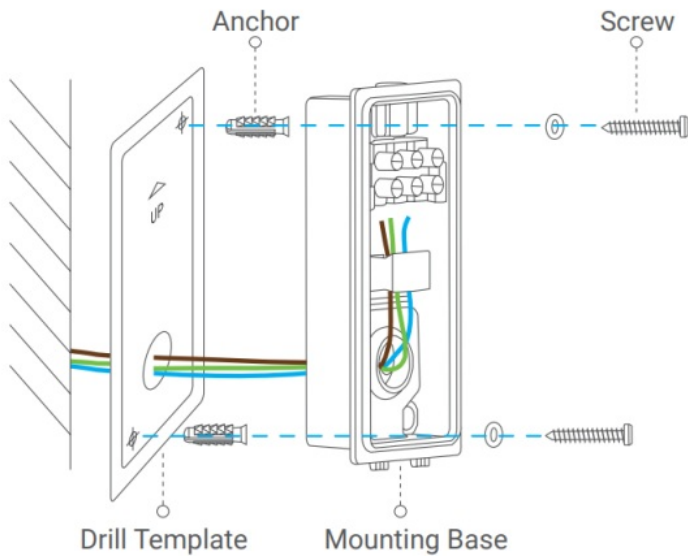
Separate the mounting base from camera

Unscrew the base screw using screwdriver (not included in the package) and pull the mounting base off the camera.



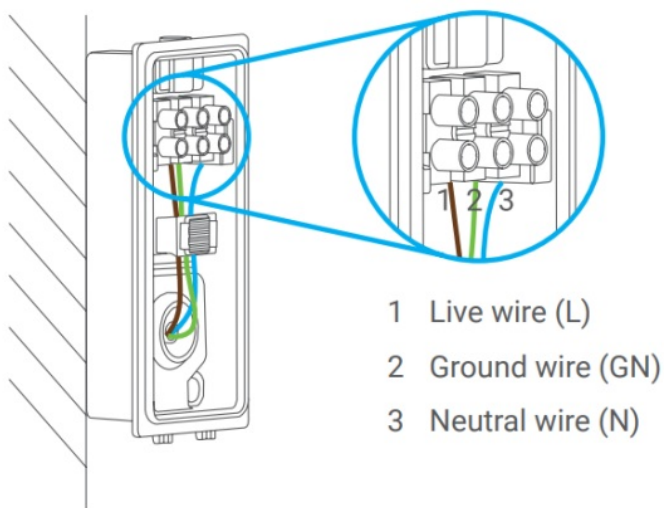
Install the mounting base

- Place drill template onto the surface you have chosen to mount the base.
- (For cement wall only) Drill screw holes according to the template and insert anchors.
- Take the wires from the wall through the drill template and the rubber of the mounting base.
- Use screws to fix the mounting base



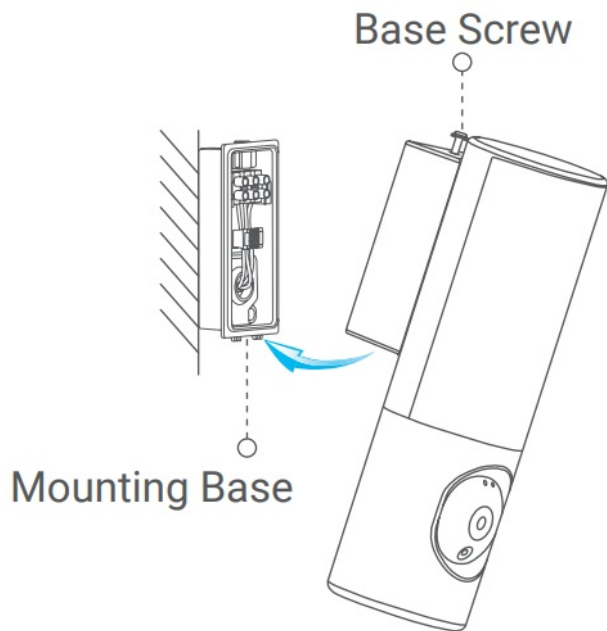
Connect the wires

- Connect the Neutral wire (N), Ground wire (GN) and Live wire (L) one by one.
- Secure them using screwdriver.



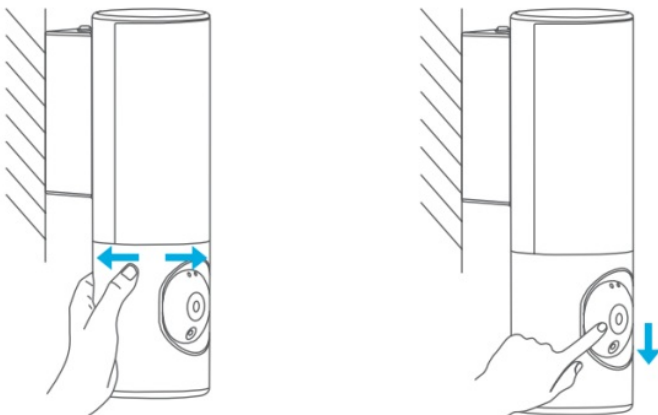
Insert the camera to the mounting base

- Buckle the bottom of the mounting base into the camera.
- Press the mounting base and camera together.
- Tighten the base screw located on the top of the camera.

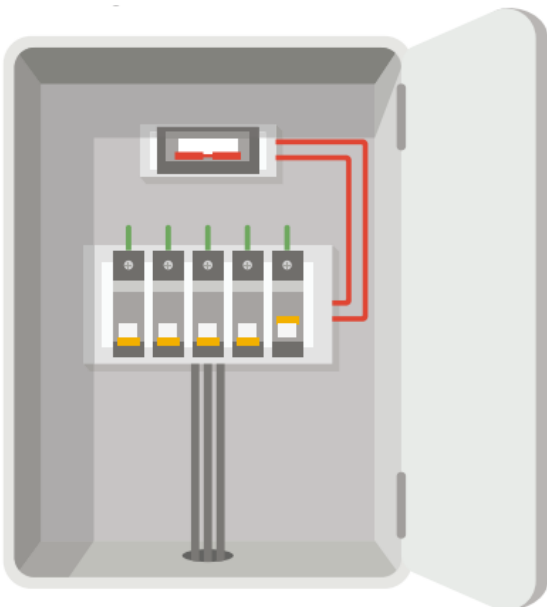


Adjust camera module's angle

You can adjust the horizontal and vertical angle of the camera module as needed.

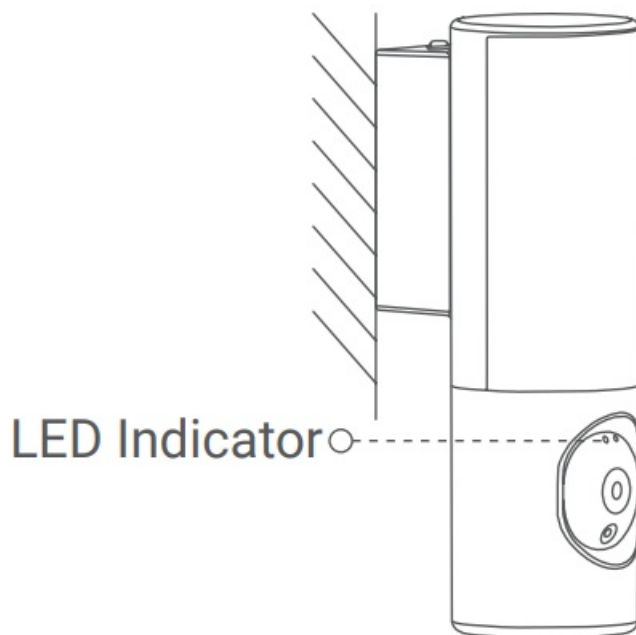


Restore power at the breaker



Confirm the camera has power

After restoring power, the camera will be ready for setup when the light is on and the LED Indicator on the front of the camera fast flashes blue.



Setup

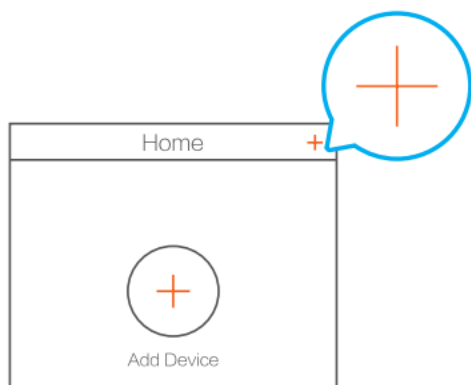
Get the EZVIZ app

- Connect your mobile phone to Wi-Fi.
- Download and install the EZVIZ app by searching “EZVIZ” in the App Store or Google Play Store™.
- Launch the app and register an EZVIZ user account.

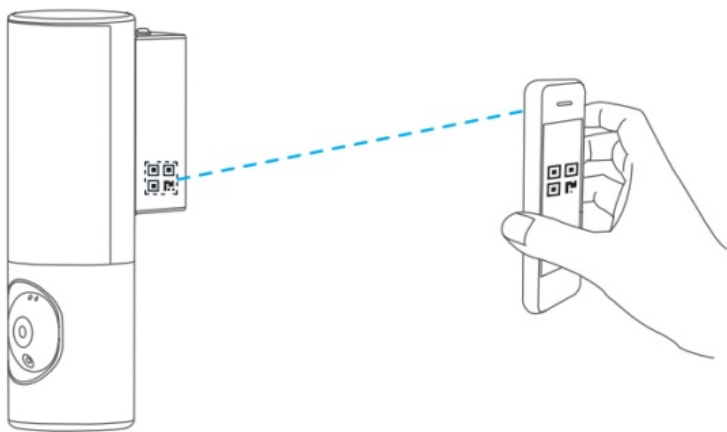
Add camera to EZVIZ

- Log in to your account using the EZVIZ app.

On the Home screen, tap “+” on the upper-right corner to go to the Scan QR Code interface.



- Scan the QR code on the Quick Start Guide cover or on the body of the camera.



- Follow the EZVIZ app wizard to finish Wi-Fi configuration.

If you want to change your camera's Wi-Fi, press and hold the reset button for 4s and repeat the steps above.

EXPOSURE TO RADIOFREQUENCY RF

The frequency bands and the nominal limits of transmitted power (radiated and/or conducted) applicable to this radio device are the following:

- **Band** Wi-Fi 2.4 GHz
- **Frequency** From 2.4 GHz to 2.4835 GHz
- **Power transmission (EIRP)** 100 mW

For detailed information, please refer to www.ezviz.eu.

COPYRIGHT © Hangzhou EZVIZ Software Co., Ltd.. ALL RIGHTS RESERVED. Any and all information, including, among others, wordings, pictures, graphs are the properties of Hangzhou EZVIZ Software Co., Ltd. (hereinafter referred to as "EZVIZ"). This user manual (hereinafter referred to as "the Manual") cannot be reproduced, changed, translated, or distributed, partially or wholly, by any means, without the prior written permission of EZVIZ. Unless otherwise stipulated, EZVIZ does not make any warranties, guarantees or representations, express or implied, regarding to the Manual.

About this Manual

The Manual includes instructions for using and managing the product. Pictures, charts, images and all other information hereinafter are for description and explanation only. The information contained in the Manual is subject to change, without notice, due to firmware updates or other reasons. Please find the latest version in the **EZVIZ**™ website (<http://www.ezvizlife.com>).

Revision Record

New release – January, 2019

Trademarks Acknowledgement

"**EZVIZ**" and other EZVIZ's trademarks and logos are the properties of EZVIZ in various jurisdictions. Other trademarks and logos mentioned below are the properties of their respective owners.

Legal Disclaimer

TO THE MAXIMUM EXTENT PERMITTED BY APPLICABLE LAW, THE PRODUCT DESCRIBED, WITH ITS

HARDWARE, SOFTWARE AND FIRMWARE, IS PROVIDED “AS IS”, WITH ALL FAULTS AND ERRORS, AND EZVIZ MAKES NO WARRANTIES, EXPRESS OR IMPLIED, INCLUDING WITHOUT LIMITATION, MERCHANTABILITY, SATISFACTORY QUALITY, FITNESS FOR A PARTICULAR PURPOSE, AND NONINFRINGEMENT OF THIRD PARTY. IN NO EVENT WILL EZVIZ, ITS DIRECTORS, OFFICERS, EMPLOYEES, OR AGENTS BE LIABLE TO YOU FOR ANY SPECIAL, CONSEQUENTIAL, INCIDENTAL, OR INDIRECT DAMAGES, INCLUDING, AMONG OTHERS, DAMAGES FOR LOSS OF BUSINESS PROFITS, BUSINESS INTERRUPTION, OR LOSS OF DATA OR DOCUMENTATION, IN CONNECTION WITH THE USE OF THIS PRODUCT, EVEN IF EZVIZ HAS BEEN ADVISED OF THE POSSIBILITY OF SUCH DAMAGES.

TO THE MAXIMUM EXTENT PERMITTED BY APPLICABLE LAW, IN NO EVENT SHALL EZVIZ’S TOTAL LIABILITY FOR ALL DAMAGES EXCEED THE ORIGINAL PURCHASE PRICE OF THE PRODUCT.

EZVIZ DOES NOT UNDERTAKE ANY LIABILITY FOR PERSONAL INJURY OR PROPERTY DAMAGE AS THE RESULT OF PRODUCT INTERRUPTION OR SERVICE TERMINATION CAUSED BY: A) IMPROPER INSTALLATION OR USAGE OTHER THAN AS REQUESTED; B) THE PROTECTION OF NATIONAL OR PUBLIC INTERESTS; C) FORCE MAJEURE; D) YOURSELF OR THE THIRD PARTY, INCLUDING WITHOUT LIMITATION, USING ANY THIRD PARTY’S PRODUCTS, SOFTWARE, APPLICATIONS, AND AMONG OTHERS. REGARDING TO THE PRODUCT WITH INTERNET ACCESS, THE USE OF PRODUCT SHALL BE WHOLLY AT YOUR OWN RISKS. EZVIZ SHALL NOT TAKE ANY RESPONSIBILITIES FOR ABNORMAL OPERATION, PRIVACY LEAKAGE OR OTHER DAMAGES RESULTING FROM CYBER ATTACK, HACKER ATTACK, VIRUS INSPECTION, OR OTHER INTERNET SECURITY RISKS; HOWEVER, EZVIZ WILL PROVIDE TIMELY TECHNICAL SUPPORT IF REQUIRED. SURVEILLANCE LAWS AND DATA PROTECTION LAWS VARY BY JURISDICTION. PLEASE CHECK ALL RELEVANT LAWS IN YOUR JURISDICTION BEFORE USING THIS PRODUCT IN ORDER TO ENSURE THAT YOUR USE CONFORMS TO THE APPLICABLE LAW. EZVIZ SHALL NOT BE LIABLE IN THE EVENT THAT THIS PRODUCT IS USED WITH ILLEGITIMATE PURPOSES.

IN THE EVENT OF ANY CONFLICTS BETWEEN THE ABOVE AND THE APPLICABLE LAW, THE LATTER PREVAILS.

Documents / Resources

| | |
|---|---|
|  | <p>EZVIZ LC3 2K Floodlight Weatherproof Security Camera [pdf] User Guide LC3, 2K Floodlight Weatherproof Security Camera, LC3 2K Floodlight Weatherproof Security Camera, Weatherproof Security Camera, Security Camera, Camera</p> |
|---|---|

References

-  [EZVIZ - Creating Easy Smart Homes](#)
-  [EZVIZ - Creating Easy Smart Homes](#)