



EZVIZ CST3C Smart Button User Guide

[Home](#) » [ezviz](#) » EZVIZ CST3C Smart Button User Guide 



CST3C Smart Button User Guide

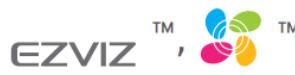
COPYRIGHT © Hangzhou EZVIZ Software Co., Ltd. ALL RIGHTS RESERVED. Any and all information, including, among others, wordings, pictures, graphs are the properties of Hangzhou EZVIZ Software Co., Ltd. (hereinafter referred to as “EZVIZ”). This user manual (hereinafter referred to as “the Manual”) cannot be reproduced, changed, translated, or distributed, partially or wholly, by any means, without the prior written permission of EZVIZ. Unless otherwise stipulated, EZVIZ does not make any warranties, guarantees or representations, express or implied, regarding to the Manual.

About this Manual

The Manual includes instructions for using and managing the product. Pictures, charts, images and all other information hereinafter are for description and explanation only. The information contained in the Manual is subject to change, without notice, due to firmware updates or other reasons. Please find the latest version in the TM website (<http://www.ezvizlife.com>).

Revision Record New release January 2021

Trademarks Acknowledgement

 and other EZVIZ trademarks and logos are the properties of EZVIZ in various jurisdictions. Other trademarks and logos mentioned below are the properties of their respective owners.

Legal Disclaimer

TO THE MAXIMUM EXTENT PERMITTED BY APPLICABLE LAW, THE PRODUCT DESCRIBED, WITH ITS HARDWARE, SOFTWARE AND FIRMWARE, IS PROVIDED “AS IS”, WITH ALL FAULTS AND ERRORS, AND EZVIZ MAKES NO WARRANTIES, EXPRESS OR IMPLIED, INCLUDING WITHOUT LIMITATION, MERCHANTABILITY, SATISFACTORY QUALITY, FITNESS FOR A PARTICULAR PURPOSE, AND NON-INFRINGEMENT OF THIRD PARTY. IN NO EVENT WILL EZVIZ, ITS DIRECTORS, OFFICERS, EMPLOYEES, OR AGENTS BE LIABLE TO YOU FOR ANY SPECIAL, CONSEQUENTIAL, INCIDENTAL, OR INDIRECT DAMAGES, INCLUDING, AMONG OTHERS, DAMAGES FOR LOSS OF BUSINESS PROFITS, BUSINESS INTERRUPTION, OR LOSS OF DATA OR DOCUMENTATION, IN CONNECTION WITH THE USE OF THIS PRODUCT, EVEN IF EZVIZ HAS BEEN ADVISED OF THE POSSIBILITY OF SUCH DAMAGES.

TO THE MAXIMUM EXTENT PERMITTED BY APPLICABLE LAW, IN NO EVENT SHALL EZVIZ’S TOTAL

LIABILITY FOR ALL DAMAGES EXCEED THE ORIGINAL PURCHASE PRICE OF THE PRODUCT. EZVIZ DOES NOT UNDERTAKE ANY LIABILITY FOR PERSONAL INJURY OR PROPERTY DAMAGE AS THE RESULT OF PRODUCT INTERRUPTION OR SERVICE TERMINATION CAUSED BY:

A) IMPROPER INSTALLATION OR USAGE OTHER THAN AS REQUESTED;

B) THE PROTECTION OF NATIONAL OR PUBLIC INTERESTS;

C) FORCE MAJEURE;

D) YOURSELF OR THE THIRD PARTY, INCLUDING WITHOUT LIMITATION, USING ANY THIRD PARTY'S PRODUCTS, SOFTWARE, APPLICATIONS, AND AMONG OTHERS. REGARDING THE PRODUCT WITH INTERNET ACCESS, THE USE OF THE PRODUCT SHALL BE WHOLLY AT YOUR OWN RISKS. EZVIZ SHALL NOT TAKE ANY RESPONSIBILITY FOR ABNORMAL OPERATION, PRIVACY LEAKAGE, OR OTHER DAMAGES RESULTING FROM CYBER ATTACKS, HACKER ATTACKS, VIRUS INSPECTIONS, OR OTHER INTERNET SECURITY RISKS; HOWEVER, EZVIZ WILL PROVIDE TIMELY TECHNICAL SUPPORT IF REQUIRED. SURVEILLANCE LAWS AND DATA PROTECTION LAWS VARY BY JURISDICTION. PLEASE CHECK ALL RELEVANT LAWS IN YOUR JURISDICTION BEFORE USING THIS PRODUCT IN ORDER TO ENSURE THAT YOUR USE CONFORMS TO THE APPLICABLE LAW. EZVIZ SHALL NOT BE LIABLE IN THE EVENT THAT THIS PRODUCT IS USED FOR ILLEGITIMATE PURPOSES.

IN THE EVENT OF ANY CONFLICTS BETWEEN THE ABOVE AND THE APPLICABLE LAW, THE LATTER PREVAILS.

Contents

[1 Overview](#)

[2 Basics](#)

[3 Get the EZVIZ App](#)

[4 Preparations](#)

[5 Add Device](#)

[5.1 Method One: Add by Scanning QR Code](#)

[5.2 Method Two: Add by the Gateway](#)

[6 Installation](#)

[7 Important Safety Information](#)

[8 FCC Information](#)

[9 Documents / Resources](#)

[9.1 References](#)

[10 Related Posts](#)

Overview

1. Package Contents



Smart Button



Double-sided Tape

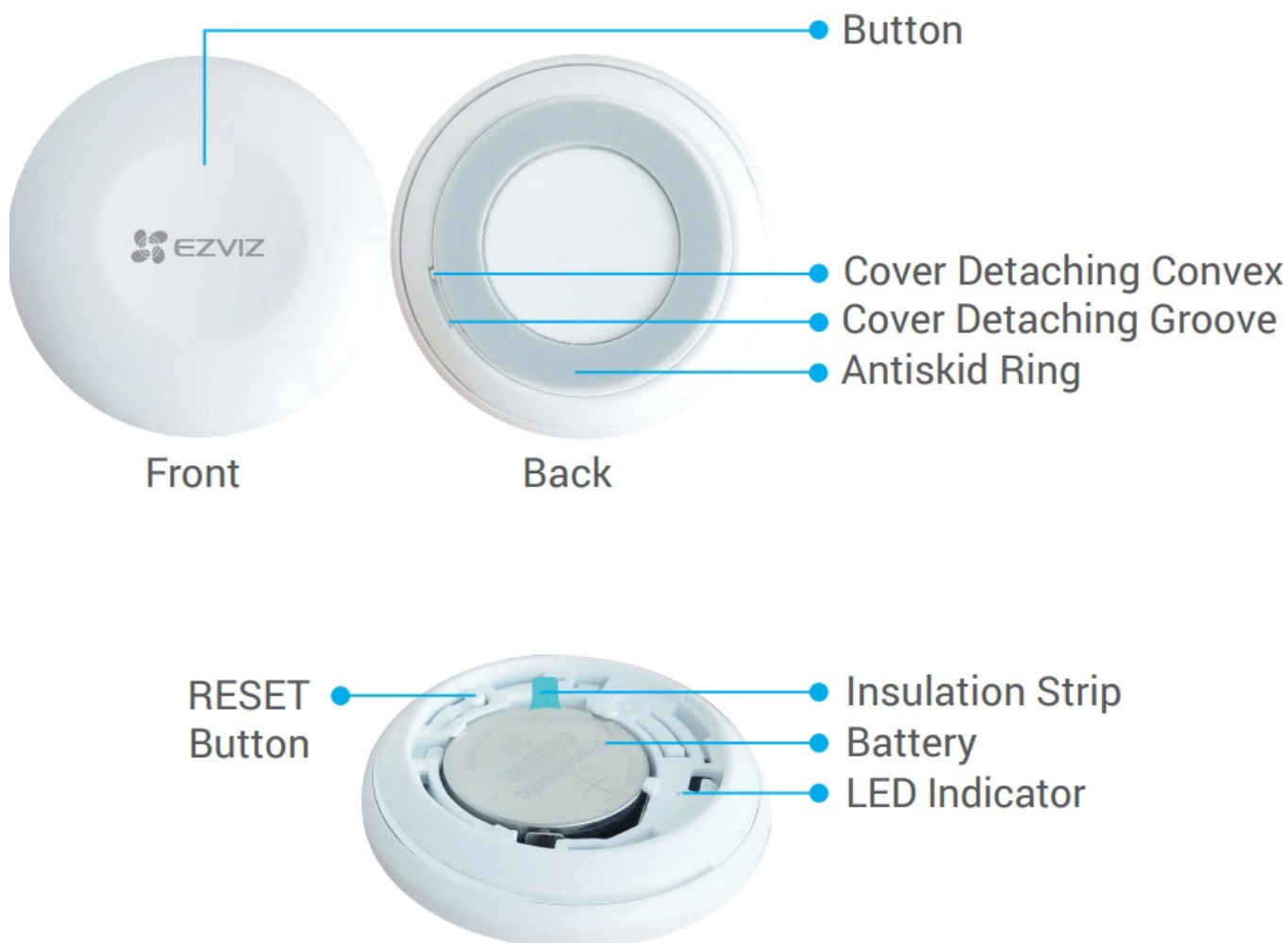


Regulatory Information



Quick Start Guide

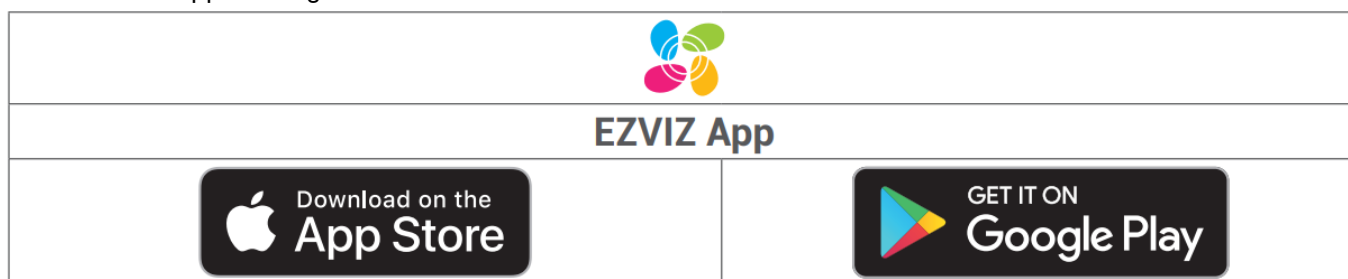
Basics



Name	Description
Button	Press the button once, twice or press and hold the button, the custom operations or scenes on the app can be performed.
RESET Button	Press and hold the RESET button for over 5s, the smart button will restart and then enter device adding mode.
LED Indicator	<ul style="list-style-type: none"> • Fast-flashing Blue: Enters device adding mode. • Fast-flashing Blue and then off: Added to the Gateway successfully. • Fast-flashing Blue and then off in 180 seconds: Failed to be added to the gateway.

Get the EZVIZ App

1. Connect your mobile phone to Wi-Fi (suggested).
2. Download and install the EZVIZ app by searching for “EZVIZ” in the App Store or Google Play
3. Launch the app and register an EZVIZ user account.



If you have already used the app, please make sure that it is the latest version. To find out if an update is available, go to the app store and search for “EZVIZ”.

Preparations

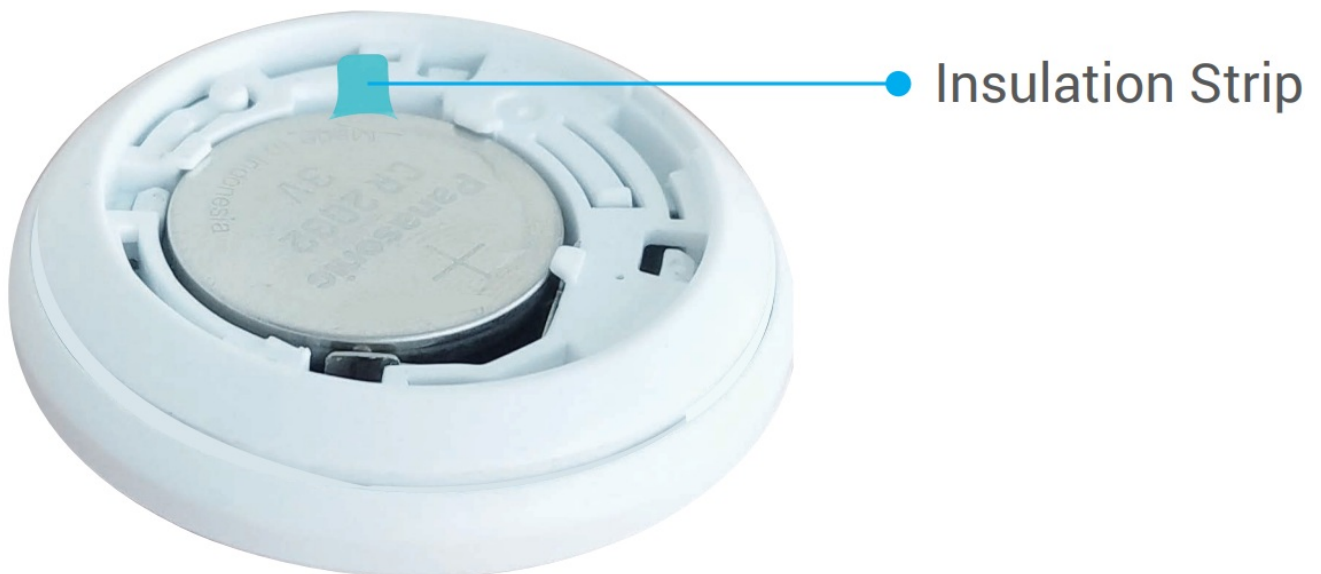
1. Remove Cover

Remove the cover of the smart button by turning the antiskid ring counterclockwise as shown in the figure below.



2. Remove Insulation Strip

Remove the battery insulation strip as shown in the figure below.



- If you need to replace batteries, please purchase CR2032 210mAh batteries.
- When replacing batteries, please insert with the positive side facing up.

Add Device



The smart button should be used along with EZVIZ Zigbee Smart Gateway (afterinafter referred to as “gateway”). Please add a gateway to the EZVIZ cloud by referring to the gateway user manual, and then add the smart button to the gateway.

Method One: Add by Scanning QR Code

1. Connect your phone to Wi-Fi.

2. Log in to your account through EZVIZ app.
3. Tap the device adding icon, and then the QR code scanning interface will be displayed.
4. Scan the QR code on the inner side of the cover or on the user manual.




123456

5. Add the smart button to the gateway by following the wizard on the app.
6. Align the cover detaching convex with the cover detaching groove as shown in the figure below. Rotate the cover clockwise to tighten cover.




Method Two: Add by the Gateway

 When adding device by the gateway, place the device as close to the gateway as possible.

1. Make the gateway enter device adding mode as instructed by the user manual of the gateway
2. Press and hold the RESET button for over 5 seconds until the indicator on the smart button turns fast-flashing blue, and the smart button enters adding mode.
3. The smart button will be added to the gateway automatically.
4. Align the cover detaching convex with the cover detaching groove as shown in the figure below. Rotate the cover clockwise to tighten the cover.

Installation

 The smart button can be put on the table, or be stuck on where you want through the double-sided tape on the cover of the smart button.

1. Put on the table




Fig. 1 Put on the table

2. Stick at Where You Want



Fig. 2 Stick at where you want

-  Do not install the smart button on metal doors because metal will cause signal attenuation. You can install it on walls beside metal doors.
- It is recommended that the distance between the smart button and gateway be less than 20m. If there are walls between them, the number of doors should be less than 2.
- Before sticking the smart button, clean the dust on the surface first. Do not stick the smart button on

limewashed walls.

Regulatory Information



This product and – if applicable – the supplied accessories too are marked with “CE” and comply therefore with the applicable harmonized European standards listed under the Radio Equipment Directive 2014/53/EU, the EMC Directive 2014/30/EU, the RoHS Directive 2011/65/EU.



2012/19/EU (WEEE directive): Products marked with this symbol cannot be disposed of as unsorted municipal waste in the European Union. For proper recycling, return this product to your local supplier upon the purchase of equivalent new equipment, or dispose of it at designated collection points. For more information see: www.recyclethis.info.



2006/66/EC and its amendment 2013/56/EU (battery directive): This product contains a battery that cannot be disposed of as unsorted municipal waste in the European Union. See the product documentation for specific battery information. The battery is marked with this symbol, which may include lettering to indicate cadmium (Cd), lead (Pb), or mercury (Hg). For proper recycling, return the battery to your supplier or to a designated collection point. For more information see: www.recyclethis.info.

EC DECLARATION OF CONFORMITY

Hereby, Hangzhou EZVIZ Software Co., Ltd. declares that the radio equipment type [CS-A1-32W, CS-A3, CS-T1C, CS-T2C, CS-T3C, CS-T9-A, CS-T4-A] is in compliance with Directive 2014/53/EU. The full text of the EC DECLARATION OF CONFORMITY is available at the following web link: <http://www.ezvizlife.com/declaration-of-conformity>.

Use only the power adapters listed in the Table.

Equipment model	Adapter manufacture	Adapter model
CS-A1-32W/CS-T9-A/CS-A3	Shenzhen Honor Electronics Co Ltd	ADS-5RE-06 05050EPCU/EPC(US), ADS-5RH-06 05050EPB(UK), ADS-5RH-06 05050EPG(EU), ADS-5RH-06 05050EPSA(AU), ADS-5RH-06 05050EPBR(BR), ADS-5RH-06 05050EPI (IN), ADS-5MA-06A 05050GPK(KR)
	Sichuan Jiuzhou Electronic Technology Co., Ltd	DYS05100CP-U, DYS05100CP-E

Important Safety Information



Warning: Direct current.



Note: Please read the manual before using the device.



This symbol on the device indicates that the safety compatibility manual and / or installation manual must be read, which contains information related to the safe operation of the device.

Caution: Be sure to read these instructions before operating the equipment.



Warning: For SELV DC input: the DC power source shall comply with the Safety Extra-Low Voltage

(SELV) requirements of IEC/EN 60950-1, IEC/EN 62368-1. Warning: The power source should meet limited power source or PS2 requirements according to IEC/EN 60950-1 or IEC/EN 62368-1.



Warning: If you want to disconnect the device from the power source, please unplug the DC power terminal that connects the power adapter and device.

Warning: Disposal of a battery into fire or a hot oven, or mechanically crushing or cutting of a battery that can result in an explosion.

Warning: Leaving a battery in an extremely high temperature surrounding environment can result in an explosion or the leakage of flammable liquid or gas.

Warning: A battery subjected to extremely low air pressure may result in an explosion or the leakage of flammable liquid or gas.

Warning: Dispose of used batteries according to the instructions.

Warning: Replace only with the same or equivalent type recommended by the manufacturer.

Caution: THE PRODUCT IS BUILT IN A REPLACEABLE BATTERY.

Warning: Do not ingest battery, Chemical Burn Hazard.

Caution: This product contains a coin/button cell battery. If the coin/button cell battery is swallowed, it can cause severe internal burns in just 2 hours and can lead to death.

Caution: Keep new and used batteries away from children.

Caution: If the battery compartment does not close securely, stop using the product and keep it away from children.

Caution: If you think batteries might have been swallowed or placed inside any part of the body, seek immediate medical attention.

Caution: Risk of fire or explosion if the battery is replaced by an incorrect type.

FCC Information

Please take attention that changes or modification not expressly approved by the party responsible for compliance could void the user's authority to operate the equipment. FCC compliance This equipment has been tested and found to comply with the limits for a Class B digital device, pursuant to part 15 of the FCC Rules. These limits are designed to provide reasonable protection against harmful interference in a residential installation. This equipment generates, uses and can radiate radio frequency energy and, if not installed and used in accordance with the instructions, may cause harmful interference to radio communications. However, there is no guarantee that interference will not occur in a particular installation. If this equipment does cause harmful interference to radio or television reception, which can be determined by turning the equipment off and on, the user is encouraged to try to correct the interference by one or more of the following measures:

–Reorient or relocate the receiving antenna.

–Increase the separation between the equipment and receiver

–Connect the equipment into an outlet on a circuit different from that to which the receiver is connected.

–Consult the dealer or an experienced radio/TV technician for help.

This equipment should be installed and operated with a minimum distance of 20cm between the radiator and your body. FCC Conditions This device complies with part 15 of the FCC Rules. Operation is subject to the following two conditions: 1. This device may not cause harmful interference. 2. This device must accept any interference received, including interference that may cause undesired operation.

Industry Canada ICES-003 Compliance

This device meets the CAN ICES-3 (B)/NMB-3(B) standards requirements. This device complies with Industry Canada licence-exempt RSS standard(s). Operation is subject to the following two conditions: (1) this device may not cause interference, and (2) this device must accept any interference, including interference that may cause undesired operation of the device. Under Industry Canada regulations, this radio transmitter may only operate using an antenna of a type and maximum (or lesser) gain approved for the transmitter by Industry Canada. To reduce potential radio interference to other users, the antenna type and its gain should be so chosen that the equivalent isotropically radiated power (e.i.r.p.) is not more than that necessary for successful communication. This equipment should be installed and operated with a minimum distance 20cm between the radiator and your body.

Documents / Resources

