



EZVIZ CSCP1 Smart Home Camera User Guide

[Home](#) » [ezviz](#) » EZVIZ CSCP1 Smart Home Camera User Guide 

EZVIZ CSCP1 Smart Home Camera



COPYRIGHT © Hangzhou EZVIZ Software Co., Ltd.. ALL RIGHTS RESERVED. Any and all information, including, among others, wordings, pictures, graphs are the properties of Hangzhou EZVIZ Software Co., Ltd. (hereinafter referred to as “EZVIZ”).

This user manual (hereinafter referred to as “the Manual”) cannot be reproduced, changed, translated, or distributed, partially or wholly, by any means, without the prior written permission of EZVIZ. Unless otherwise stipulated, EZVIZ does not make any warranties, guarantees or representations, express or implied, regarding to the Manual.

Contents

- 1 About this Manual
- 2 Package Contents
- 3 Basics
- 4 Setup
 - 4.1 Power-on
 - 4.2 Camera Setup
- 5 Installation (Optional)
 - 5.1 Install the Micro SD Card (Optional)
 - 5.2 Install the Base
- 6 3 Install the Camera
 - 6.1 Regulatory Information
- 7 Documents / Resources
 - 7.1 References
- 8 Related Posts


About this Manual

The Manual includes instructions for using and managing the product. Pictures, charts, images and all other information hereinafter are for description and explanation only. The information contained in the Manual is subject to change, without notice, due to firmware updates or other reasons. Please find the latest version in the TM website (<http://www.ezvizlife.com>).

Revision Record

New release – January, 2019

Trademarks Acknowledgement

 TM, and other EZVIZ's trademarks and logos are the properties of EZVIZ in various jurisdictions. Other trademarks and logos mentioned below are the properties of their respective owners.

Legal Disclaimer

TO THE MAXIMUM EXTENT PERMITTED BY APPLICABLE LAW, THE PRODUCT DESCRIBED, WITH ITS HARDWARE, SOFTWARE AND FIRMWARE, IS PROVIDED "AS IS", WITH ALL FAULTS AND ERRORS, AND EZVIZ MAKES NO WARRANTIES, EXPRESS OR IMPLIED, INCLUDING WITHOUT LIMITATION, MERCHANTABILITY, SATISFACTORY QUALITY, FITNESS FOR A PARTICULAR PURPOSE, AND NONINFRINGEMENT OF THIRD PARTY. IN NO EVENT WILL EZVIZ, ITS DIRECTORS, OFFICERS, EMPLOYEES, OR AGENTS BE LIABLE TO YOU FOR ANY SPECIAL, CONSEQUENTIAL, INCIDENTAL, OR INDIRECT DAMAGES, INCLUDING, AMONG OTHERS, DAMAGES FOR LOSS OF BUSINESS PROFITS, BUSINESS INTERRUPTION, OR LOSS OF DATA OR DOCUMENTATION, IN CONNECTION WITH THE USE OF THIS PRODUCT, EVEN IF EZVIZ HAS BEEN ADVISED OF THE POSSIBILITY OF SUCH DAMAGES.

TO THE MAXIMUM EXTENT PERMITTED BY APPLICABLE LAW, IN NO EVENT SHALL EZVIZ'S TOTAL LIABILITY FOR ALL DAMAGES EXCEED THE ORIGINAL PURCHASE PRICE OF THE PRODUCT. EZVIZ DOES NOT UNDERTAKE ANY LIABILITY FOR PERSONAL INJURY OR PROPERTY DAMAGE AS THE RESULT OF PRODUCT INTERRUPTION OR SERVICE TERMINATION CAUSED BY:

A) IMPROPER INSTALLATION OR USAGE OTHER THAN AS REQUESTED;

B) THE PROTECTION OF NATIONAL OR PUBLIC INTERESTS;

C) FORCE MAJEURE;

D) YOURSELF OR THE THIRD PARTY, INCLUDING WITHOUT LIMITATION, USING ANY THIRD PARTY'S PRODUCTS, SOFTWARE, APPLICATIONS, AND AMONG OTHERS. REGARDING TO THE PRODUCT WITH INTERNET ACCESS, THE USE OF PRODUCT SHALL BE WHOLLY AT YOUR OWN RISKS. EZVIZ SHALL NOT TAKE ANY RESPONSIBILITIES FOR ABNORMAL OPERATION, PRIVACY LEAKAGE OR OTHER DAMAGES RESULTING FROM CYBER ATTACK, HACKER ATTACK, VIRUS INSPECTION, OR OTHER INTERNET SECURITY RISKS; HOWEVER, EZVIZ WILL PROVIDE TIMELY TECHNICAL SUPPORT IF REQUIRED. SURVEILLANCE LAWS AND DATA PROTECTION LAWS VARY BY JURISDICTION. PLEASE CHECK ALL

RELEVANT LAWS IN YOUR JURISDICTION BEFORE USING THIS PRODUCT IN ORDER TO ENSURE THAT YOUR USE CONFORMS TO THE APPLICABLE LAW. EZVIZ SHALL NOT BE LIABLE IN THE EVENT THAT THIS PRODUCT IS USED WITH ILLEGITIMATE PURPOSES.
IN THE EVENT OF ANY CONFLICTS BETWEEN THE ABOVE AND THE APPLICABLE LAW, THE LATTER PREVAILS.

Package Contents



Camera



Base



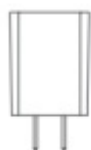
Screw Kit



Drill Template



Power Cable



Power Adapter

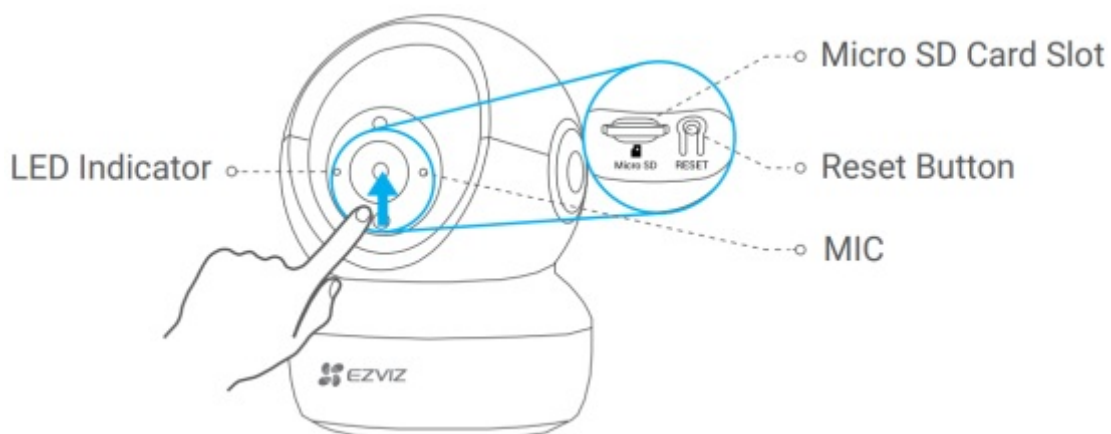


Regulatory Information

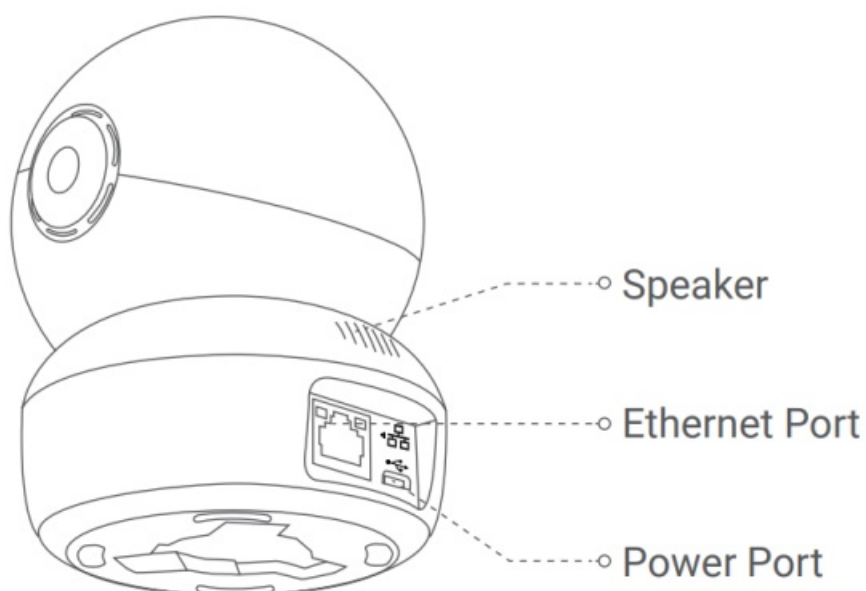


Quick Start Guide

Basics



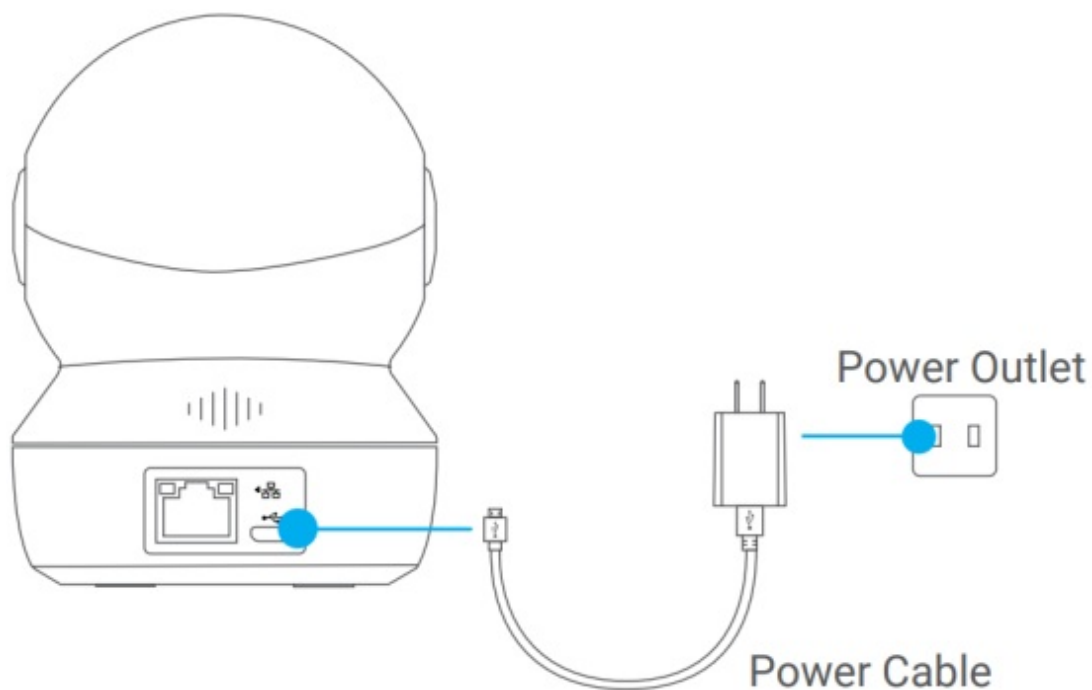
Name	Description
LED Indicator	<ul style="list-style-type: none"> • Solid Red: Camera starting up. • low-flashing Red: Wi-Fi connection failed. • Fast-flashing Red: Camera exception (e.g. Micro SD card error). • Fast-flashing Blue: Camera ready for Wi-Fi connection. • Slow-flashing Blue: Camera running properly.
Micro SD Card (sold separately)	Initialize the card in the EZVIZ app before using it.
Reset Button	Hold for 5 seconds to restart and set all parameters to default.
MIC	For audio in
Speaker	For audio out.



Setup

Power-on

Plug the power cable into the camera, and then plug the power adapter into an outlet as shown in the figure below.



i The LED turning fast-flashing blue indicates that the camera is powered on and ready for Wi-Fi configuration.

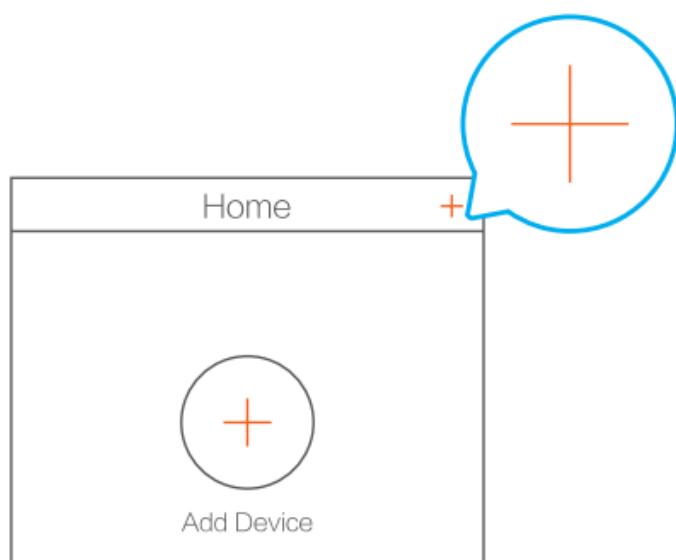
Camera Setup

1. Create a user account

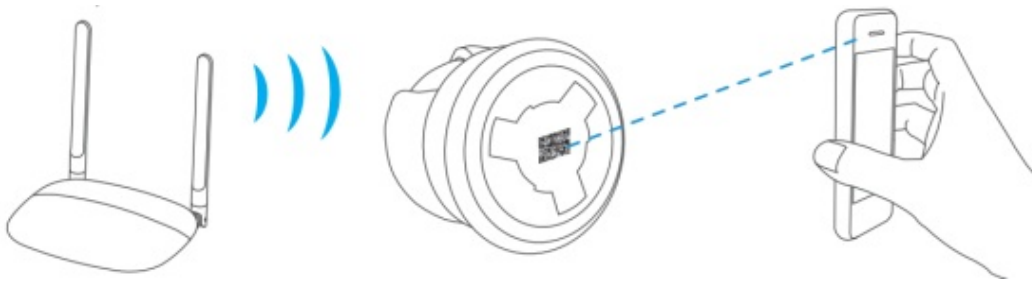
- Connect your mobile phone to Wi-Fi using your 2.4GHz network.
- Search for “EZVIZ” in the App Store or Google Play Store(TM).
- Download and install the EZVIZ app.
- Launch the app.
- Create and register an EZVIZ user account by following the start-up wizard.

2. Add a camera to EZVIZ

- Log in to your account using the EZVIZ app.
- On the Home screen, tap “+” on the upper-right corner to go to the Scan QR Code interface.



- Scan the QR code on the bottom of the camera.



– Follow the EZVIZ app wizard to finish Wi-Fi configuration. Hold the Reset

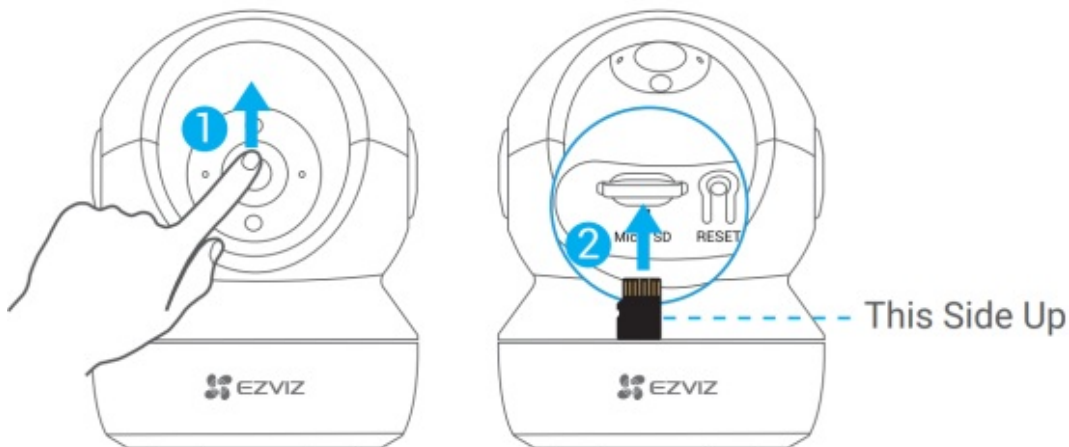
i Hold the Reset button for 5s in any of the following cases:

- The camera fails to connect to your Wi-Fi network.
- You want to select another Wi-Fi network.

Installation (Optional)

Install the Micro SD Card (Optional)

1. Rotate the sphere upwards until you see the card slot.
2. Insert the Micro SD card (sold separately) into the card slot as shown in the figure below.



i After installing the Micro SD card, you should initialize the card in the EZVIZ app before using it.

3. In the EZVIZ app, tap the **Storage Status** in the Device Settings interface to check the SD card status.
4. If the memory card status displays as **Uninitialized**, tap to initialize it.

i The status will then change to **Normal** and it can store videos and/or pictures.

Install the Base

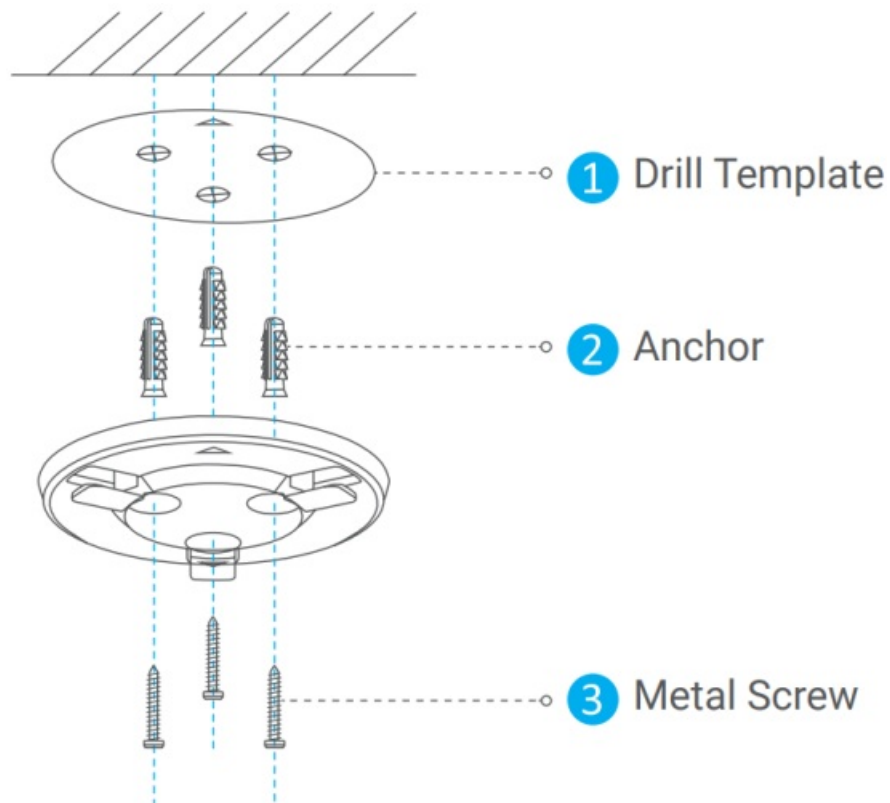
The camera can be placed horizontally or mounted on the ceiling. Here we take ceiling mounting as an example.

- **i** Make sure the ceiling is strong enough to withstand three times the weight of the camera.
- Avoid positioning the camera in an area that gets a lot of light shining directly into the camera lens.
- Working temperature: -10°C— 45°C.

– Place the drill template onto the surface you have chosen to mount the camera.

– (For cement wall/ceiling only) Drill screw holes according to the template, and insert three anchors.

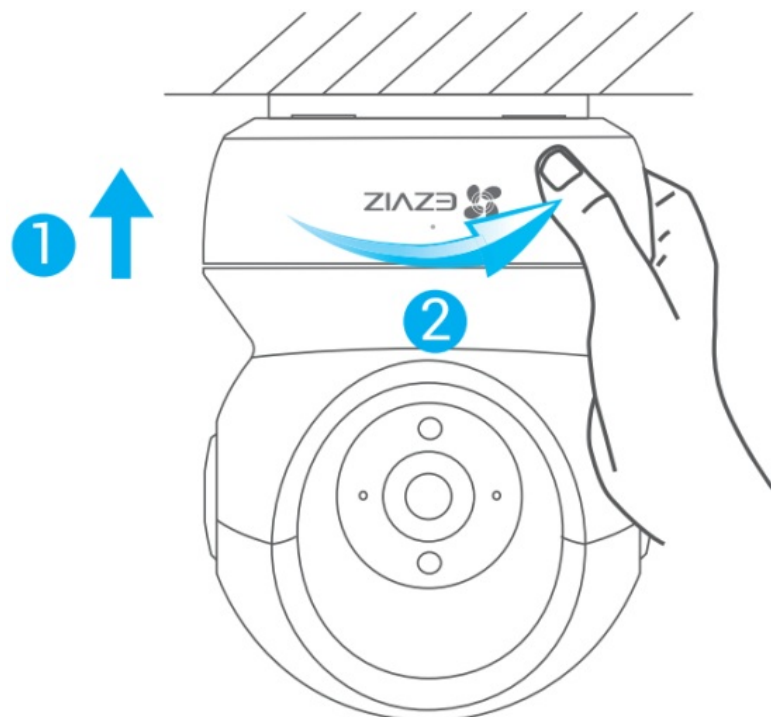
- Use three metal screws to fix the camera base according to the template.



- i** Please tear up the drill template after installing the base if needed.

3 Install the Camera

Mount the camera to the base, and turn it clockwise until it is fixed.



- i** After installing the camera, please go to the EZVIZ app to flip the camera image.
- i** For detailed information, please visit www.ezviz.eu.



This product and – if applicable – the supplied accessories too are marked with “CE” and comply therefore with the applicable harmonized European standards listed under the Radio Equipment Directive 2014/53/EU, the EMC Directive 2014/30/EU, the RoHS Directive 2011/65/EU.



2012/19/EU (WEEE directive): Products marked with this symbol cannot be disposed of as unsorted municipal waste in the European Union. For proper recycling, return this product to your local supplier upon the purchase of equivalent new equipment, or dispose of it at designated collection points. For more information see: www.recyclethis.info



2006/66/EC and its amendment 2013/56/EU (battery directive): This product contains a battery that cannot be disposed of as unsorted municipal waste in the European Union. See the product documentation for specific battery information. The battery is marked with this symbol, which may include lettering to indicate cadmium (Cd), lead (Pb), or mercury (Hg). For proper recycling, return the battery to your supplier or to a designated collection point. For more information see: www.recyclethis.info

EC DECLARATION OF CONFORMITY

Hereby, Hangzhou EZVIZ Software Co., Ltd. declares that the radio equipment type [CS-C1C, CS-C1HC, CS-C1T, CS-C2C, CS-CV206, CS-CV310, CS-C3N, CS-C3W, CS-C3WN, CS-C3X, CS-C6N, CS-CV246, CS-CV248, CS-C6CN, CS-C6C, CS-C6W, CS-TY1, CS-TY2, CS-TY3, CS-CV336, CS-DP1, CS-DP1C, CS-DP2C, CS-DB2C, CS-C4W, CS-C4C, CS-CV228, CS-C5W, CS-C5C, CS-C5HC, CS-C5X, CS-C5HX, CS-C8W, CS-C8C, CS-C3A, CS-BC1, CS-BC1-B1, CS-BC1-B2, CS-BC1-B3, CS-BC1-B4, CS-W2H, CS-X5S-4W, CS-X5S-8W, CS-A1-32W, CS-T9-A, CS-T4-A] is in compliance with Directive 2014/53/EU.






The full text of the EC DECLARATION OF CONFORMITY is available at the following web link:

<http://www.ezvizlife.com/declaration-of-conformity>.

Use only power supplies listed in the Table.

Equipment model	Adapter manufacture	Adapter model
CS-C1C/ CS-C1HC/ CS-C1T/ CS-C2C/ CS -CV206/ CS-CV246/C S-C6N/ CS-C6CN/ C S-C6C/ CS-TY1/ CS- TY2/ CS-TY3/ CS-W2 D/ CS-A1-32W/ CS-T 9-A	Shenzhen Honor Electronic Co Ltd	ADS-5RE-06 05050EPCU/EPC(US), ADS-5RH-06 05050EPB(UK), ADS-5RH-06 05050EPG(EU), ADS-5RH-06 05050EPSA(AU), ADS-5RH-06 05050EPBR(BR), ADS-5RH-06 05050EPI(IN), ADS-5MA-06A 05050GPK(KR)
	Sichuan Jiuzhou Electronic Technology Co., Ltd	DYS05100CP-U, DYS05100CP-E
CS-CV248/ CS-C6W/ CS-C6Wi/ CS-CV336/ CS-DP1/ CS-DP1C/ C S-DP2C/ CS-C3A/ CS -BC1	Shenzhen Honor Electronic Co Ltd	ADS-10LA-06 05010EPCU/EPC(US), ADS-10RH-06 05010EPB (UK), ADS-10RH-06 05010EPG(EU), ADS-10RH-06 05010EPSA(SA), ADS-10RH-06 05010EPBR(BR), ADS-10RH-06 05010EPI(IN), ADS-12CG-06 05010EPC(JP)
	Sichuan Jiuzhou Electronic Technology Co., Ltd	DYS05200CQ-U, DYS05200CQ-E
CS-CV310/ CS-C3N/ CS-C3W/ CS-C3WN/ CS-C3X/ CS-SD1/ CS -C4W/ CS-C4C/ CS-C V228/ CS-C8W/ CS-C 8C/ CS-W2H/ CS-W3 C-WD1200G/ CS-T8- B	Shenzhen Honor Electronic Co Ltd	ADS-12FG-12N 12012EPCU(US), ADS-12FG-12N 12012EPB(UK), ADS-12FG-12N 12012EPG(EU), ADS-12FB-12 12012EPSA(AU), ADS-12FG-12N 12012EPBR(BR), ADS-12FG-12N 12012EPI(IN)
CS-X5S-4W/ CS-X5S -8W/ CS-X5S-16H	Moso Power Supply Technology Co. Ltd	MSA-C1500IC12.0-18P-GB(UK), MSA-C1500IC12.0-18P-DE, MSA-C1500IC12.0-18P-AU(AU), MSA-C1500IC12.0-18P-BR(BR), ADS-25FSG-12 12018GPI(IN)

Important Safety Information

	Note: Please read the manual before using the device.
	This symbol on the device indicates that the safety compatibility manual and / or installation manual must be read, which contains information related to the safe operation of the device. Caution: Be sure to read these instructions before operating the equipment.
	This symbol on the device indicates that the surface or component is overheating. If you touch this surface, you may cause personal injury. Warning: To reduce the risk of personal injury due to overheating of the components, wait until the surface cools down before touching it.
	Warning: The separate earthing terminal must be permanently connected to earth. Warning: For SELV DC input: the DC power source shall comply with the Safety Extra-Low Voltage (SELV) requirements of IEC 60950-1.
	Caution: Do not block ventilation openings while the system is on, and keep at least 2 cm distance from ventilation openings and walls or other things which may block the openings. Warning: Disposal of a battery into fire or a hot oven, or mechanically crushing or cutting of a battery that can result in an explosion. Warning: Leaving a battery in an extremely high temperature surrounding environment that can result in an explosion or the leakage of flammable liquid or gas. Warning: A battery subjected to extremely low air pressure that may result in an explosion or the leakage of flammable liquid or gas. Warning: Dispose of used batteries according to the instructions. Warning: Replace only with the same or equivalent type recommended by the manufacturer. Caution: THE PRODUCT IS BUILT IN A REPLACEABLE BATTERY. Warning: Do not ingest battery, Chemical Burn Hazard. Caution: This product contains a coin/button cell battery. If the coin / button cell battery is swallowed, it can cause severe internal burns in just 2 hours and can lead to death. Caution: Keep new and used batteries away from children. Caution: If the battery compartment does not close securely, stop using the product and keep it away from children. Caution: If you think batteries might have been swallowed or placed inside any part of the body, seek immediate medical attention. Caution: Risk of fire or explosion if the battery is replaced by an incorrect type.

FCC Information

Please take attention that changes or modification not expressly approved by the party responsible for compliance could void the user's authority to operate the equipment.

FCC compliance

This equipment has been tested and found to comply with the limits for a Class B digital device, pursuant to part 15 of the FCC Rules. These limits are designed to provide reasonable protection against harmful interference in a residential installation. This equipment generates, uses and can radiate radio frequency energy and, if not installed and used in accordance with the instructions, may cause harmful interference to radio communications. However, there is no guarantee that interference will not occur in a particular installation. If this equipment does cause harmful interference to radio or television reception, which can be determined by turning the equipment off and on, the user is encouraged to try to correct the interference by one or more of the following measures:

- Reorient or relocate the receiving antenna.
- Increase the separation between the equipment and receiver.
- Connect the equipment into an outlet on a circuit different from that to which the receiver is connected.
- Consult the dealer or an experienced radio/TV technician for help.

This equipment should be installed and operated with a minimum distance 20cm between the radiator and your body.

FCC Conditions

This device complies with part 15 of the FCC Rules. Operation is subject to the following two conditions:

- 1. This device may not cause harmful interference.
- 2. This device must accept any interference received, including interference that may cause undesired operation.

Industry Canada ICES-003 Compliance

This device meets the CAN ICES-3 (B)/NMB-3(B) standards requirements.
This device complies with Industry Canada licence-exempt RSS standard(s). Operation is subject to the following two conditions:


- (1) this device may not cause interference, and
- (2) this device must accept any interference, including interference that may cause undesired operation of the device.

Under Industry Canada regulations, this radio transmitter may only operate using an antenna of a type and maximum (or lesser) gain approved for the transmitter by Industry Canada. To reduce potential radio interference to other users, the antenna type and its gain should be so chosen that the equivalent isotropically radiated power (e.i.r.p.) is not more than that necessary for successful communication.

This equipment should be installed and operated with a minimum distance 20cm between the radiator and your body.



Documents / Resources

	<p>EZVIZ CSCP1 Smart Home Camera [pdf] User Guide</p> <p>CSCP1, 2APV2-CSCP1, 2APV2CSCP1, CSCP1 Smart Home Camera, Smart Home Camera, Home Camera, Camera</p>
---	--

References

- [EZVIZ - Creating Easy Smart Homes](#)
- [EZVIZ - Creating Easy Smart Homes](#)
- [Declaration of Conformity | EZVIZ](#)
- [HOME](#)