

**Extron**

Extron AXI 22  
AT D Plus DSP  
Expansion  
and Software



# Extron AXI 22 AT D Plus DSP Expansion and Software User Guide

[Home](#) » [Extron](#) » Extron AXI 22 AT D Plus DSP Expansion and Software User Guide 

## Contents

- [1 Extron AXI 22 AT D Plus DSP Expansion and Software](#)
- [2 Product Usage Instructions:](#)
- [3 Disconnect Power and Mount the AXI 22 AT D and WPD 102 XLRM](#)
- [4 Rear Panel Connections](#)
- [5 AXI 22 AT D Plus and WPD 102 XLRM • Setup Guide](#)
- [6 Front Panel Connections and Configuration](#)
- [7 Installing the AXI 22 AT D Plus and WPD 102 XLRM](#)
- [8 Dante Operation](#)
- [9 Documents / Resources](#)
  - [9.1 References](#)
- [10 Related Posts](#)

**Extron**

**Extron AXI 22 AT D Plus DSP Expansion and Software**



## Specifications

- Model: AXI 22 AT D Plus and WPD 102 XLRM
- Power Input: 12 VDC
- Power Supply: External Power Supply (12 VDC, 0.5 A max.)
- Network Connectivity: PoE (Power over Ethernet)

## Product Usage Instructions:

### Disconnect Power and Mounting

1. Disconnect power and turn off all devices to be connected.
2. Choose a suitable mounting location for the AXI 22 AT D Plus and WPD 102 XLRM.
3. Mount the devices following the instructions provided on page 3 of the user guide.

### Rear Panel Connections

1. Connect the optional 12 VDC power supply to the rear panel power inlet using the captive screw connector.
2. Plug the power cord into the IEC connector on the power supply.
3. Ensure all connections are secure and follow the wiring diagram provided in figure 1.

### Front Panel Connections and Configuration:

1. Remove the faceplate attached with the center screw to access the USB-C port.
2. Connect Mic/Line Inputs 1 and 2 as needed.
3. Configure the device using the Reset button and USB-C port as required.

## Installation Steps

1. Mount the AXI 22 AT D Plus and WPD 102 XLRM in a two-gang decorator-style wall plate using the provided mud ring or wall box.

2. Connect rear panel outputs, inputs, Dante-enabled network cable, and power as shown in figure 2.
3. Install the devices into the wall box or mud ring, attach the wall plate, but do not attach the AXI cover plate at this time.
4. Connect front panel inputs and outputs as needed.
5. Configure input and output channels using Dante Controller Software as desired.
6. Use DSP Configurator to connect to the AXI and adjust gain controls accordingly.

## Frequently Asked Questions (FAQ)

- **Q: How do I know if the device is ready and connected to a network?**

A: The amber power LEDs behind the front panel will turn off when the device is ready and connected to a network.

- **Q: What should I do if a network connection is not detected?**

A: If a network connection is not detected, the LEDs will light steady until a network connection is achieved. Check your network connections and settings.

## IMPORTANT NOTE

Go to [www.extron.com](http://www.extron.com) for the complete user guide, installation instructions, and specifications before connecting the product to the power source.



This guide provides basic instructions for an experienced technician to install the AXI 22 AT D Plus Wallplate Audio Expansion Interface with Dante® and the WPD 102 XLRM Audio Pass-Through Wallplate. For additional information and specifications, see the AXI 22 AT D Plus and WPD 100 AV Series product pages at [www.extron.com](http://www.extron.com).

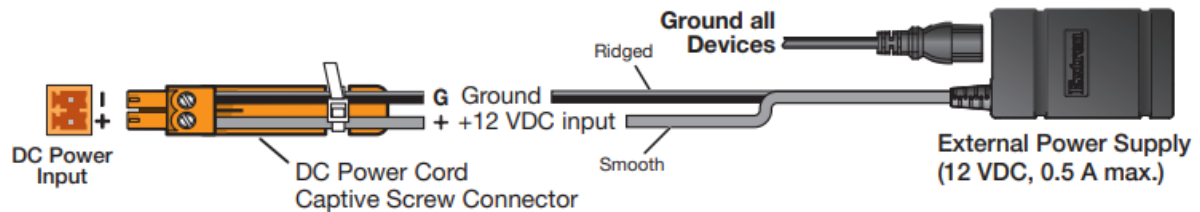
## Disconnect Power and Mount the AXI 22 AT D and WPD 102 XLRM

Before beginning installation, disconnect power and turn off all devices to be connected to the AXI 22 AT D Plus and WPD 102 XLRM. These devices can be installed anywhere microphones or other sources are located. Select a suitable mounting location, then choose an appropriate mounting option (see Installing the AXI 22 AT D Plus and WPD 102 XLRM on page 3).

For information about using Dante® Controller Software with the AXI 22 AT D Plus and WPD 102 XLRM, see Dante Operation on page 6.

## Rear Panel Connections

12 VDC power inlet (see figure 1) — As an alternative to Power over Ethernet (PoE), the AXI 22 AT D Plus can be powered with an optional 12 VDC power supply. Connect the power supply to the rear panel power inlet with a captive screw connector and plug the power cord into the IEC connector on the power supply (see figure 1 for wiring).



**Figure 1. External Power Supply Connection**

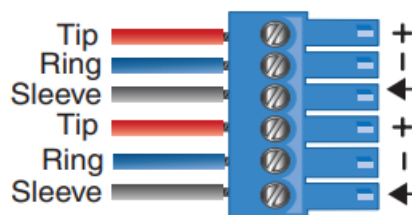
The amber power LEDs behind the front panel blink while the unit is booting. They turn off when the device is ready and connected to a network. If a network connection is not detected, the LEDs light steady until a network connection is achieved. The rear panel AT (PoE) port activity lights also blink when the unit is operational.

### ATTENTION

- Always use a power supply provided by or specified by Extron. Use of an unauthorized power supply voids all regulatory compliance certification and may cause damage to the supply and the end product.
- Unless otherwise stated, the AC/DC adapters are not suitable for use in air handling spaces or in wall cavities. The power supply is to be located within the same vicinity as the Extron AV processing equipment in an ordinary location, Pollution Degree 2, secured to the equipment rack within the dedicated closet, podium, or desk.
- The installation must always be in accordance with the applicable provisions of National Electrical Code ANSI/NFPA 70, article 725 and the Canadian Electrical Code part 1, section 16. The power supply shall not be permanently fixed to building structure or similar structure.

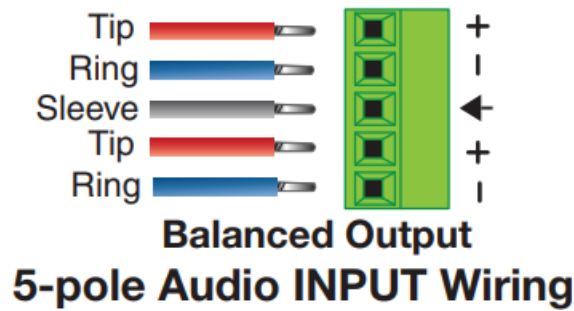
### AXI 22 AT D Plus and WPD 102 XLRM • Setup Guide

- Line Outputs — Use the provided 6-pole 3.5 mm captive screw connector to connect directly to the AXI 22 AT D Plus panel. These outputs are listed as receivers on the Dante network (see Dante Operation on page 6). Wire as shown below.

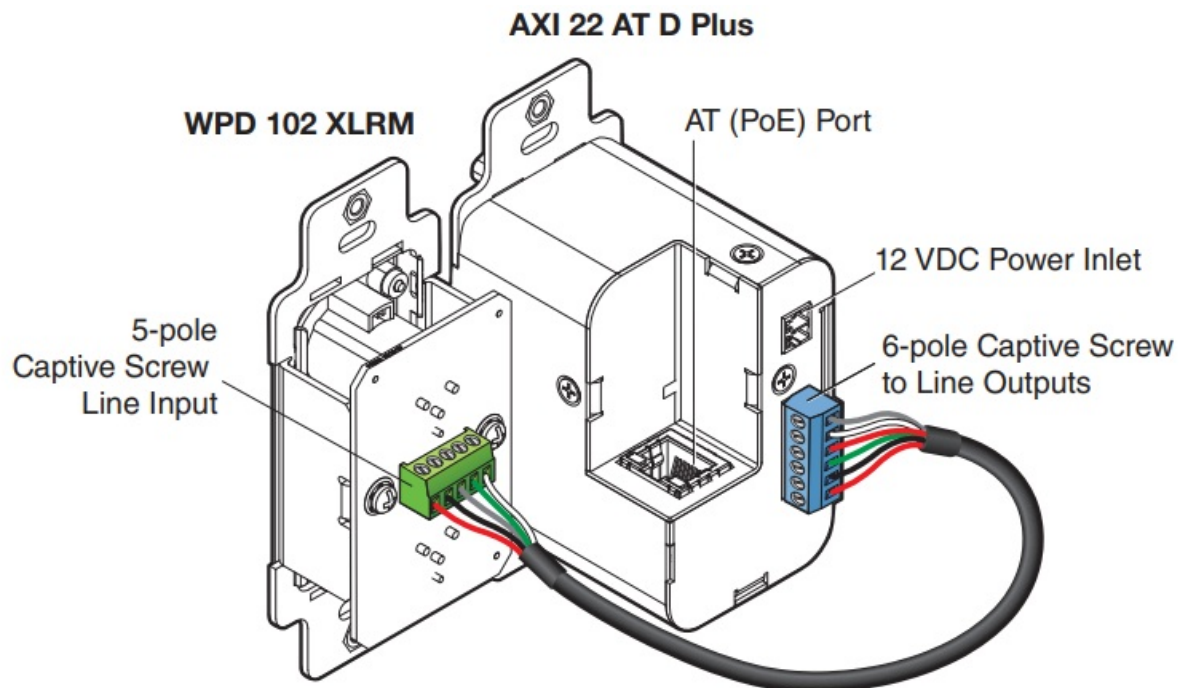


### Balanced Output 6-pole Audio OUTPUT Wiring

- Line Inputs — Use the provided 6 conductor shielded cable to connect directly to the WPD 102 XLRM panel. Since the WPD 102 XLRM only has a five contact terminals, twist the two sleeve conductors together and connect them to the single ground contact. Wire as shown below.



RJ-45 AT (PoE) port (see figure 2) — Insert an Ethernet cable into this RJ-45 port to connect the AXI 22 AT D Plus to a Dante network. This port supports Power over Ethernet (PoE), communication with DSP Configurator for configuration, digital audio transport (AT), and communication with the Dante/AES67 network for configuration via Dante Controller, which simultaneously transmits and receives a maximum of two Dante audio flows. Each audio flow can contain a maximum of two Dante audio channels (2-ch in x 2-ch out) each can be transported as either unicast or multicast data. The network speed of this port is 10/100 Mbps.

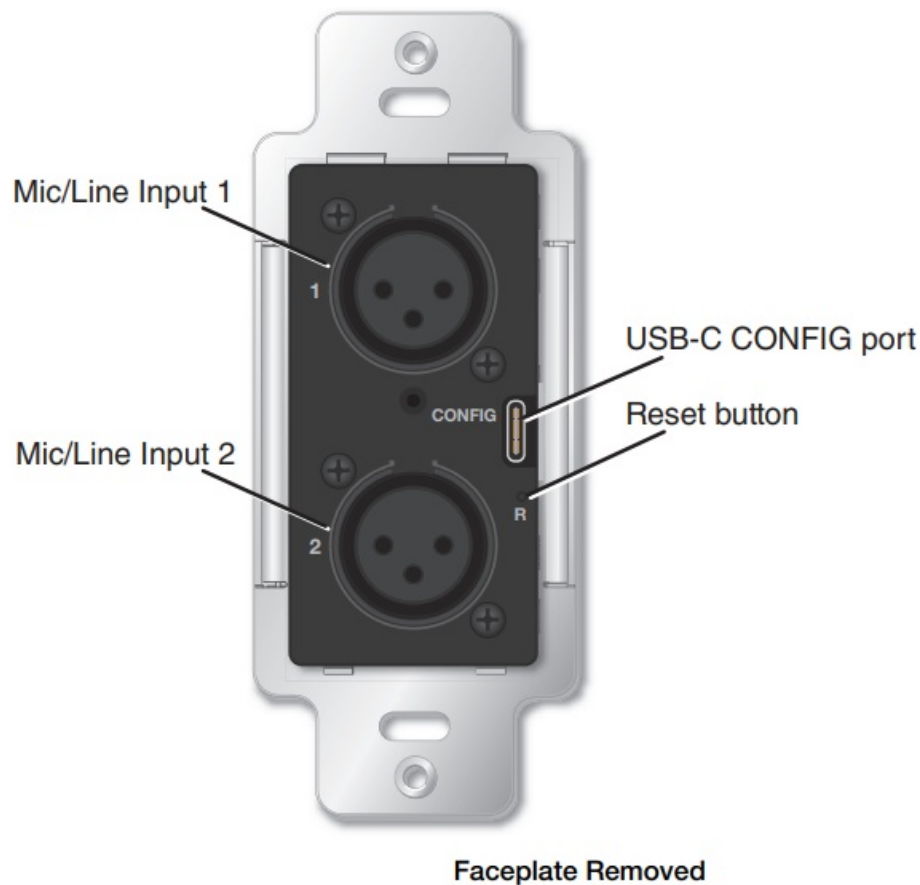


**Figure 2. Line Inputs and Outputs**

## Front Panel Connections and Configuration

- Mic/Line Input 1 and Mic/Line Input 2 — Two female XLR ports accept balanced or unbalanced mic/line audio signals.
- LEDs visible through the top of the XLR ports —
- Amber LEDs light when power is provided. The LED blinks while the AXI 22 AT D Plus is booting up and is off when boot-up is complete. It lights steadily if there is no network connection.
- Green LEDs light when +48 VDC phantom power is enabled.
- USB-C CONFIG port — Connect a PC to this port to configure the AXI 22 AT D Plus via DSP Configurator or update via Firmware Uploader.
- **NOTE:** This USB-C port is accessed by removing the faceplate attached with the center screw.
- Reset button — Using a stylus or small pin, press this button for 10 seconds and release to reset the unit to factory Dante defaults. Dante settings such as device name, IP address, channel names, and sample rates are

reset to defaults. Gain values, mute status, and phantom power settings are not affected.



**Figure 3. AXI 22 AT D Plus Front Panel**

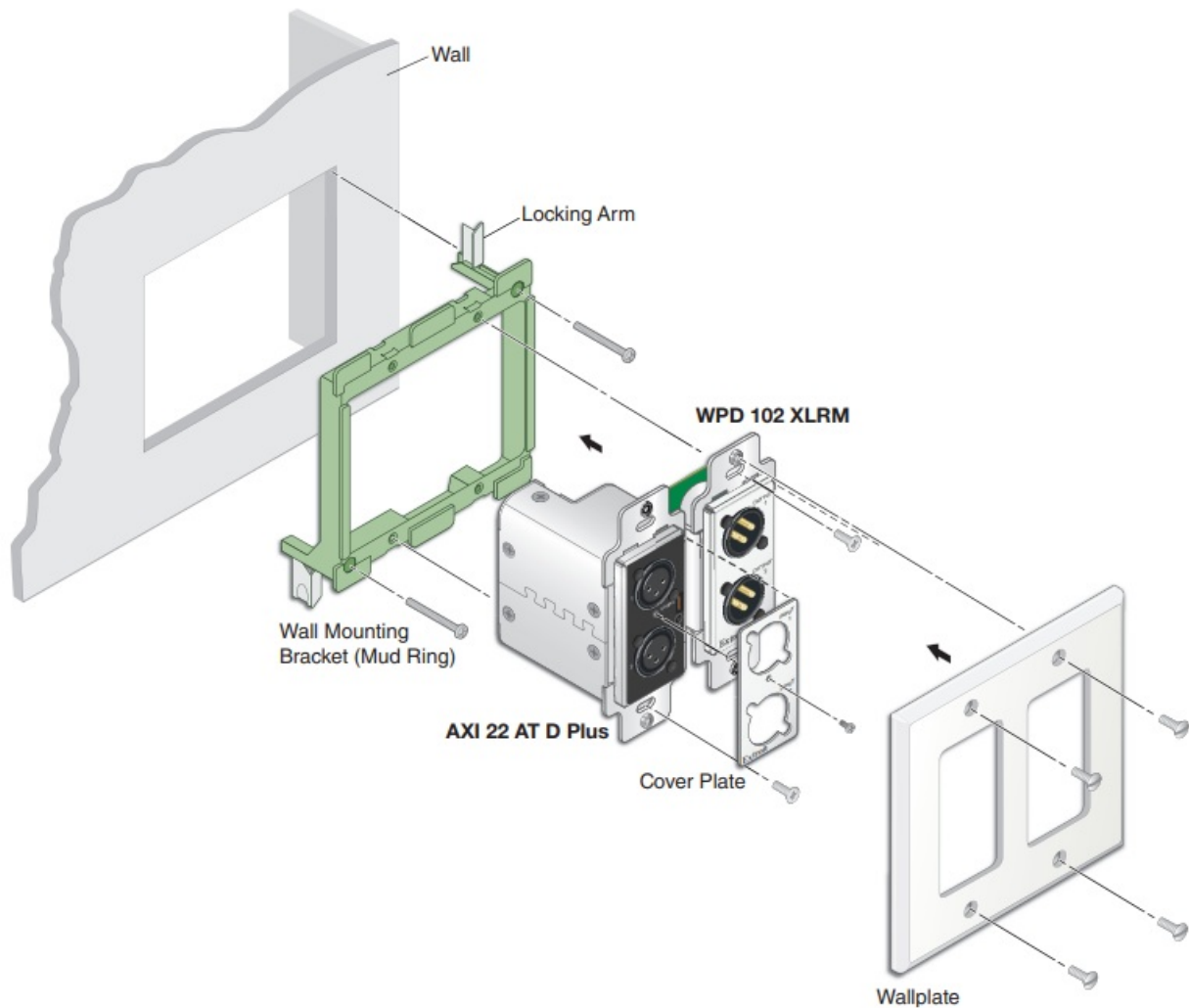
## Installing the AXI 22 AT D Plus and WPD 102 XLRM

The AXI 22 AT D Plus and WPD 102 XLRM mount in a two-gang decorator-style wall plate, which can be attached to a two-gang mud ring (provided) or a two-gang wall box (not included).

### To mount the products

1. Using the mud ring as a guide, mark the edges and cut out the material within the marked area.
2. Insert the mud ring into the opening. Rotate and secure the locking arms with the supplied screws.
3. Connect the rear panel outputs and inputs, the Dante-enabled network cable, and power (see figure 2 on page 2).
4. Install the devices into the wall box or mud ring and attach the wall plate. Do not attach the AXI cover plate at this time.
5. Connect the front panel inputs.
6. Connect the front panel outputs.
7. Start Dante Controller and route the input and output channels as desired (see Dante Network Setup on page 4 for information on Dante Controller Software).
8. Start DSP Configurator and connect to the AXI.
9. Adjust the gain controls as necessary.
10. Disconnect the front panel connections, if necessary, and place the cover plate onto the front panel so that the two protruding input connectors fit through it. Secure the cover plate in place with the provided screw in the

center.



**Figure 4. AXI 22 AT D Plus and WPD 102 XLRM Assembly**

#### **Downloading and Installing DSP Configurator Software**

The AXI 22 AT D Plus can be controlled with Extron DSP Configurator software using the USB or AT ports, or DataViewer using the USB port. Install DSP Configurator on a PC running on a PC running Microsoft® Windows® 10 or newer. For full details about computer requirements, see the DSP Configurator product page at [www.extron.com](http://www.extron.com).

**NOTE:** An Extron Insider account is required to download DSP Configurator.

1. At [www.extron.com](http://www.extron.com), hover over the Download tab. The Download window drops down.
2. Click the DSP Configurator Software link. The DSP Configurator Software page opens.
3. Click the Download button and follow the on-screen instructions to complete the DSP Configurator installation process. See the DSP Configurator Help File in the software for detailed operating information.

#### **Downloading and Installing Dante Controller Software**

Dante Controller from Audinate is required to select and route digital inputs and outputs to connected Dante-compatible devices and for limited configuration of the device. Install Dante Controller on a PC running Microsoft Windows 10 or newer. For full details about computer requirements, see the Dante Controller product page at [www.extron.com](http://www.extron.com).

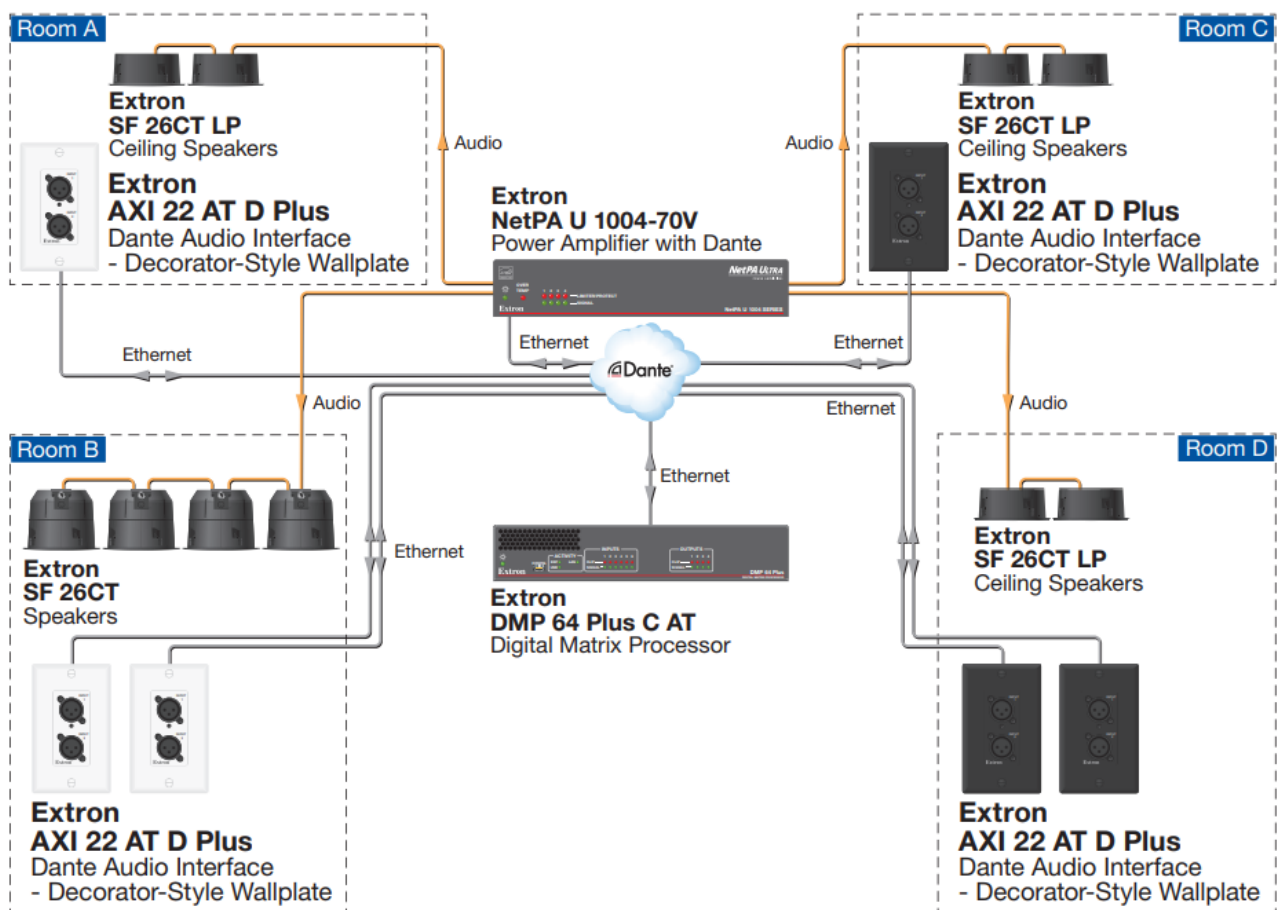
**NOTE:** An Extron Insider account is required to download Dante Controller.



1. At [www.extron.com](http://www.extron.com), hover over the Download tab. The Download window drops down.
2. Click the Dante Controller link. The Dante Controller page opens.
3. Click the Download button and follow the on-screen instructions to complete the Dante Controller installation process.

### Creating a Physical Dante Network

A physical network is required to share Dante audio channels among Dante-enabled devices like the AXI 22 AT D Plus. Other devices capable of sending and receiving audio over a Dante network must be on the same physical network in order to communicate via Dante (see figure 5 for an example of a physical Dante Network).



**Figure 5. Dante Network Example**

### Dante Network Setup

Use a standard Ethernet cable to connect the AXI 22 AT D Plus to a network via the AT (PoE) port (see figure 2 on page 2) and power the device. Launch the Dante Controller program.

Dante Controller auto-discovers all Dante devices on the network and advertises itself to allow other Dante-enabled devices to communicate with it. The default name consists of the product name followed by a hyphen (AXI22DP-) plus the last 6-digits of the unit MAC address (for example, AXI22DP-0744b2). Multiple devices on the same network can present difficulty in identifying a specific device on the network. To avoid confusion, rename each device with a unique and meaningful identifier.

### Renaming a Dante Device

**NOTE:** It is essential that Dante devices are named immediately after they are connected to the Dante network and before audio subscriptions with other devices are established. Existing subscriptions (audio connections) are removed when a device is renamed.

1. Ensure that the host PC and a single AXI 22 AT D Plus are connected to the same network.



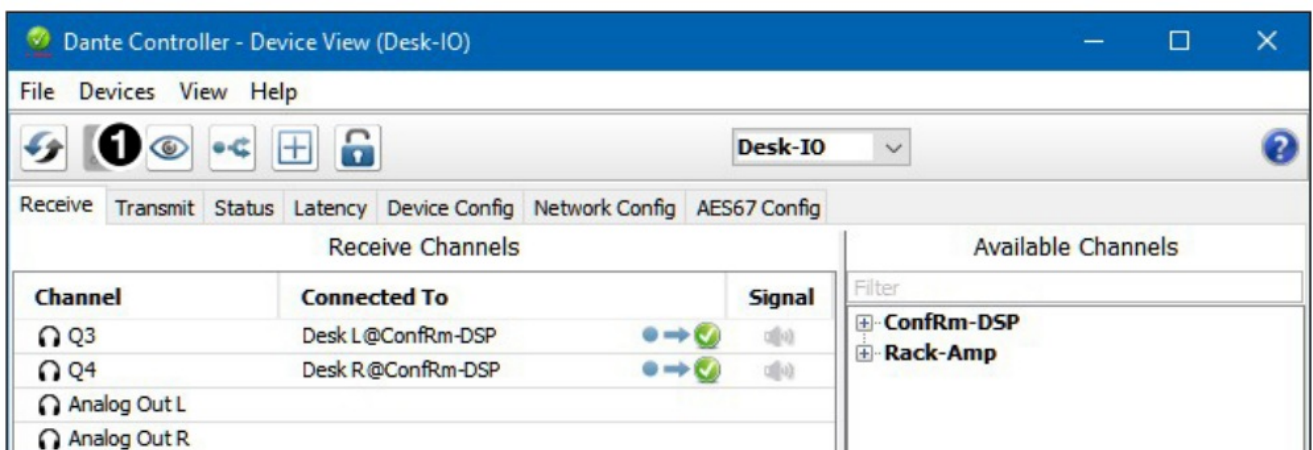
2. Open Dante Controller. The Dante Controller – Network View screen opens. All Dante devices on the network are discovered and listed.
3. From the Device list, select Device View.
4. The Dante Controller – Device View dialog opens. Select the device from the (Select a Dante Device...) drop-down list (see figure 6, 1).



**Figure 6. Dante Controller - Device View dialog**

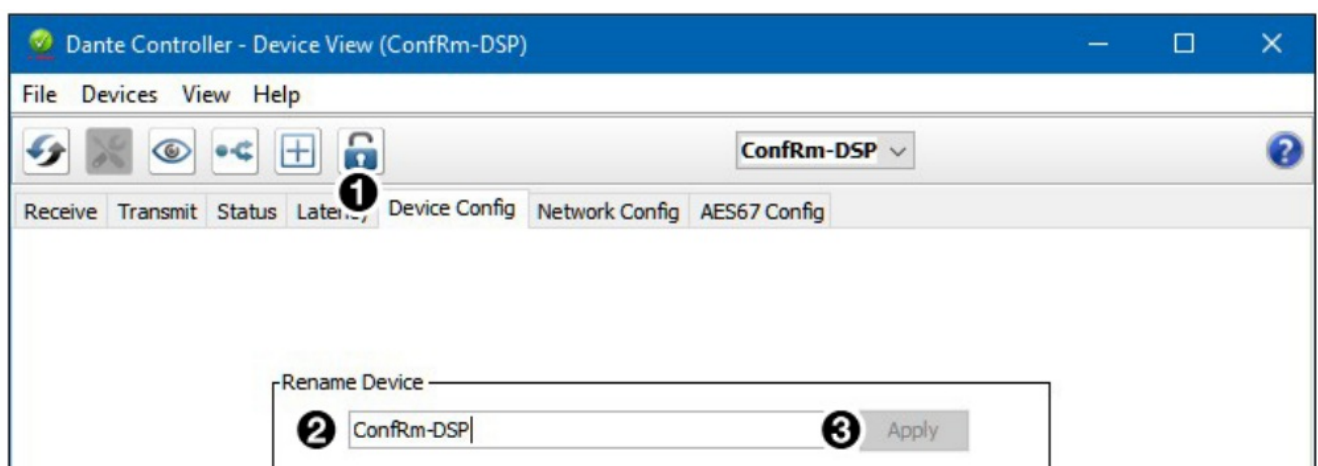
**NOTE:** If the AXI 22 AT D Plus has not been renamed, the default name consists of the product name followed by a hyphen (AXI22DP-) plus the last 6-digits of the unit MAC address (for example, AXI22DP-0744b2).

The Device View dialog populates with the selected AXI 22 AT D Plus information. Identify the current device by causing its LEDs to flash, using the Identify (eye) button (see figure 7, 1).



**Figure 7. Device View Dialog Box**

5. Click the Device Config tab (see figure 8, 1) to open the device configuration page.



**Figure 8. Device Configuration Tab**

6. In the Rename Device panel, enter the new name of the device in the text field (2). Device names follow Domain Name System (DNS) hostname rules (refer to the Dante Controller section of the AXI 22 AT D Plus User Guide for a full list of device name rules).
7. Click Apply (3). A confirmation prompt opens. Read the prompt carefully.
8. Click Yes to enter the new name, then close the Device Configuration dialog box.

The new name is written to the AXI 22 AT D Plus. Repeat as necessary for all devices.

**NOTE:** After the AXI 22 AT D Plus is renamed, it can remain connected to the network. However, subsequent devices should be connected one at a time and must be renamed before the next device is connected.

Finding a Dante Device IP Address

To find the IP address of a Dante device, the name of the device is needed Renaming a Dante Device on page 4.

**NOTE:** If the AXI 22 AT D Plus has not been renamed, its default name consists of the product name followed by a hyphen (AXI22DP-) plus the last 6 digits of the unit MAC address (for example, AXI22DP-0744b2).

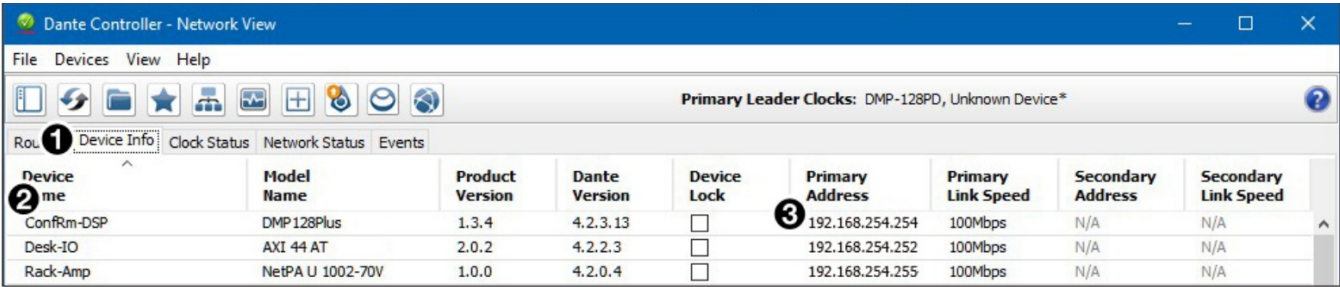


Figure 9. Dante Controller Network - View

- 1. Open Dante Controller.
- 2. On the Dante Controller Network – View screen, click the Device Info tab (see figure 9, 1).
- 3. On the Device Info page, locate the name of your AXI (2). The IP address is in the Primary Address column (3).  
In figure 9, the IP address is 192.168.254.254.

Dante Operation

Dante Transmitters and Receivers

A Dante network is comprised of transmitters that output digital audio onto the Dante network and receivers that receive digital audio from the Dante network.

The AXI 22 AT D Plus mic/line inputs are Dante transmitters because the analog audio input is converted into digital audio and transmitted onto the Dante network.

The AXI 22 AT D Plus line outputs are Dante receivers because the outputs receive digital audio from the Dante network and output that signal as analog audio.

Network View Layout

Dante transmitters are listed horizontally across the top of the Network View window (see figure 10, 1). Dante receivers are listed vertically on the left side of the window (2).

Create a link in the connection matrix (3) to create a subscription and route audio from a Dante transmitter to a Dante receiver.

Routing Transmitters and Receivers

- 1. Click the + box next to the device with the desired Dante transmitters. The available transmitters display horizontally (1).
- 2. Click the + box next to the device with the desired Dante receivers. The available receivers display vertically (2).
- 3. Click the intersection of the desired transmitter and receiver in the connection matrix (3).

**Example:** Q3@Desk-IO is connected to Desk L@ConfRm-DSP.

**NOTE:** Notice the clearly defined transmitter and receiver channel names to help manage connections.

A green check mark at the intersection of a transmit and receive channel indicates the subscription is active. A

check mark is also placed next to the receiver channel (if a green check mark does not appear, refer to the Dante Controller section of the AXI 22 AT D Plus User Guide).

4.

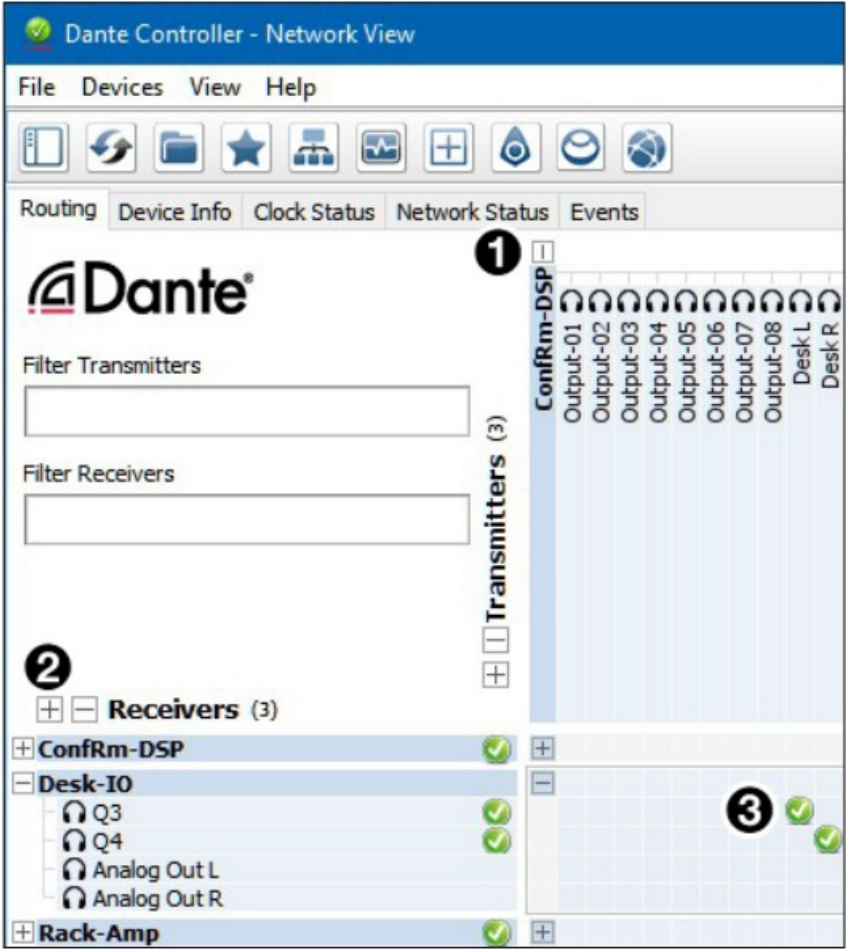


Figure 10. Dante Controller - Network View Screen

**NOTE:** A transmitter can transmit signal to multiple receivers, but a receiver can only receive signal from one transmitter.

5. Click the intersection again to disconnect the transmitter from the receiver.
- Additional subscriptions between transmitters and receivers can be made or removed using steps 1 through 4 as shown above (for additional information on Dante Controller operation, see the AXI 22 AT D Plus User Guide at [www.extron.com](http://www.extron.com)).

For information on safety guidelines, regulatory compliances, EMI/EMF compatibility, accessibility, and related topics, see the Extron Safety and Regulatory Compliance Guide on the Extron website.

© 2024 Extron — All rights reserved. [www.extron.com](http://www.extron.com)

All trademarks mentioned are the property of their respective owners.

Worldwide Headquarters: Extron USA West, 1025 E. Ball Road, Anaheim, CA 92805, 800.633.9876

Documents / Resources

	<p><a href="#">Extron AXI 22 AT D Plus DSP Expansion and Software [pdf] User Guide</a></p> <p>AXI 22 AT D Plus, WPD 102 XLRM, AXI 22 AT D Plus DSP Expansion and Software, AXI 22 AT D Plus, DSP Expansion and Software, Expansion and Software, and Software, Software</p>
--	---

## References

- [!\[\]\(a22ba4e13c745edbf29e51af246c4c12\_img.jpg\) Extron - The AV Technology Leader](#)
- [User Manual](#)

[Manuals+](#), [Privacy Policy](#)

This website is an independent publication and is neither affiliated with nor endorsed by any of the trademark owners. The "Bluetooth®" word mark and logos are registered trademarks owned by Bluetooth SIG, Inc. The "Wi-Fi®" word mark and logos are registered trademarks owned by the Wi-Fi Alliance. Any use of these marks on this website does not imply any affiliation with or endorsement.