



EXTECH TH10 Temperature USB Datalogger User Guide

[Home](#) » [EXTECH](#) » EXTECH TH10 Temperature USB Datalogger User Guide 

Contents

- [1 EXTECH TH10 Temperature USB Datalogger](#)
- [2 Software Introduction](#)
- [3 Graph Operations](#)
- [4 Documents / Resources](#)
 - [4.1 References](#)
- [5 Related Posts](#)

EXTECH

INSTRUMENTS

EXTECH TH10 Temperature USB Datalogger



Software Introduction

The TH10 software allows the user to program the logger to record temperature in Fahrenheit or Celsius and to download the data for viewing and graphing.

This version of software operates with the TH10 model that has a serial number starting with "A".

System Requirements:

Windows 7, Windows 8.1, and Windows 10

Minimum Hardware Requirements:

PC Desktop or Laptop Computer with Pentium 90MHz minimum 32 MB RAM,

USB Port, 4 MB hard disk space to install Software.

Recommended display resolution 1024 x 768 with High Color (16 bit)

Install Datalogger Software

Install the supplied Windows PC Datalogger Software by placing the supplied program disk in the PC CD-ROM drive, or by downloading the program from the Extech.com web site.

If the installation program does not automatically open and provide on-screen prompts, double click the ExtechInstaller.exe program located in the root folder.

Follow the on-screen prompts to complete the installation.



Main Menu

The main menu bar for the software appears as follows:

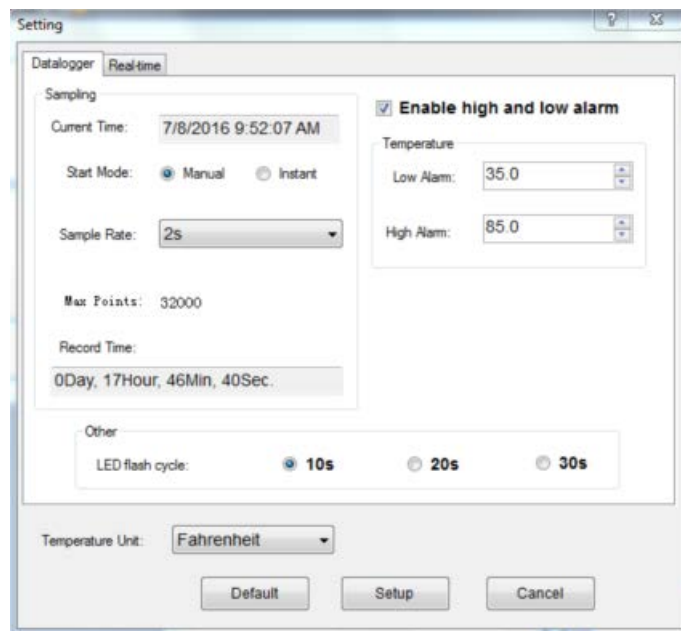
- Open a saved graph file
- Save recorded data (Real Time or Saved Data) as a IMTR (graph) or CSV (Data) file
- Real time measurement (Click to Start and Click to Stop)
- Download the recorded data from the logger
- Datalogger Setup (Real Time and Datalogger)
- Help

All of these functions are described in the following paragraphs.

Datalogger Setup and Recording

This setup will program the TH10 logger for a logger recording operation.

Click on the Datalogger Setup icon or select Datalogger setup from the File menu. Choose the Datalogger tab. The setup menu will appear as shown below.



- **CURRENT TIME:** This field will automatically synchronize with the PC date and time setting.
- **Start Mode:** The MANUAL and INSTANT select buttons allow the user to start data logging immediately when the Setup window is exited (INSTANT), or at a later time (MANUAL).
- **SAMPLE RATE:** This pull-down menu instructs the TH10 to log readings at a specific interval rate.
Settings: 2s to 30s, 1m, 5m, 15m, 30m, 1hr, 5hr, 12hr, 24hr
- **MAX POINTS:** This field instructs the TH10 to take a fixed number of readings (32,000).
- **RECORD TIME:** This field displays the amount of time the datalogger will run based on Sample rate and Max points.
- **LED Flash Cycle:** Indicates how often the Record LED (Green) will flash. longer cycle times help to extend the battery life.
- **Enable High and Low alarm:** Check the box to enable LED alarm indication. User can set High and Low temperature alarm settings. Uncheck the box to disable the flashing of the LEDs, to conserve battery power.
- **TEMPERATURE UNIT:** Selects the Temperature units of Celsius or Fahrenheit.

Click the SETUP button to save the settings and erase previously recorded data from the TH10. Press the DEFAULT button to set the TH10 back to factory default settings.

Press the CANCEL button to abort the setup.

Note: Any stored data will be permanently erased when the user clicks on Setup. To save the data before creating a new setup, click Cancel and then download the data.

Note: The battery may run out before the TH10 has finished collecting a specified number of sample points.

When in doubt, we recommend that you always install a fresh battery before logging critical data.

If INSTANT was selected in the SETUP window, the TH10 begins logging at the instant the SETUP button is pressed. If MANUAL was selected, the TH10 must be manually started by pressing the unit's orange button once until the Record LED (Green) flashes.

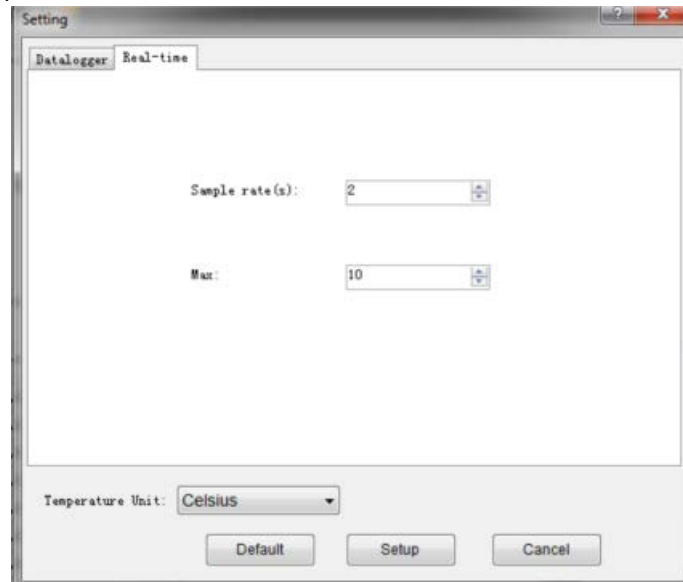
Logging will continue at the programmed sample rate until the number of readings (sample points) specified in the Setup window is reached or the User terminates the logging session by clicking on the software's download button.

The green LED flashes once per sample point and the yellow LED flashes when user programmed alarm limits are exceeded. See LED status in the TH10 User's manual.

Real-Time Setup

Click the Datalogger Setup icon or select Datalogger setup from the File pull-down menu. Select the Real-Time

tab. The setup menu will appear as shown below

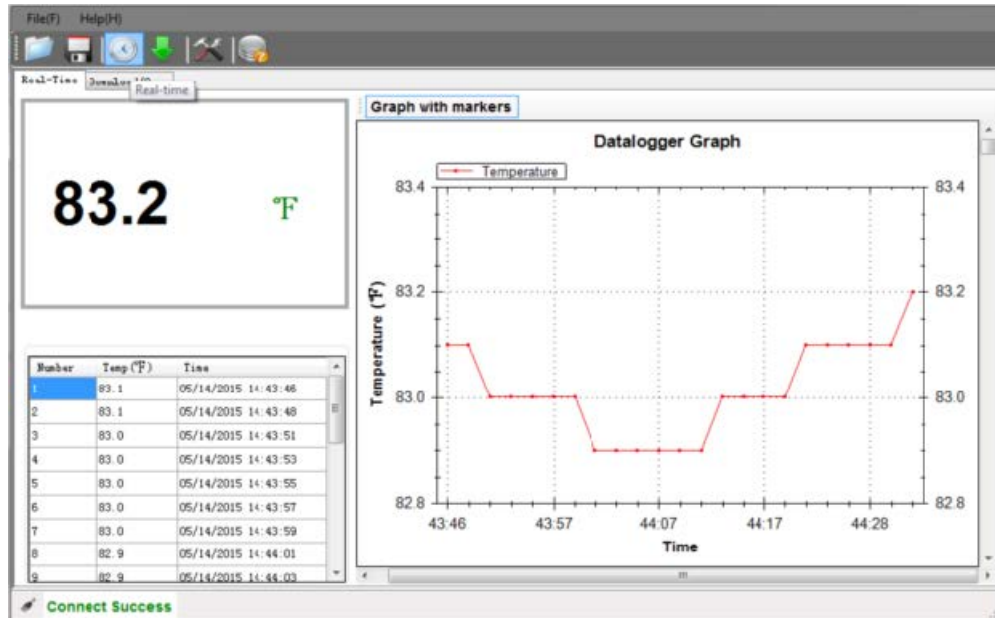


- **SAMPLE RATE:** This field instructs the TH10 to log readings at a specific interval rate.
- **MAX POINTS:** This field instructs the TH10 to take a set number of readings.
- **TEMPERATURE UNIT:** Selects the Temperature units of Celsius or Fahrenheit.

Once the changes have been made, click on the **SETUP** button to save them. Press the **DEFAULT** button to set the TH10 back to factory default conditions. Press the **CANCEL** button to abort the setup.

Real-Time Measurements

Set up for Real-Time recording in the logger setup prior to running the unit in Real-Time mode.

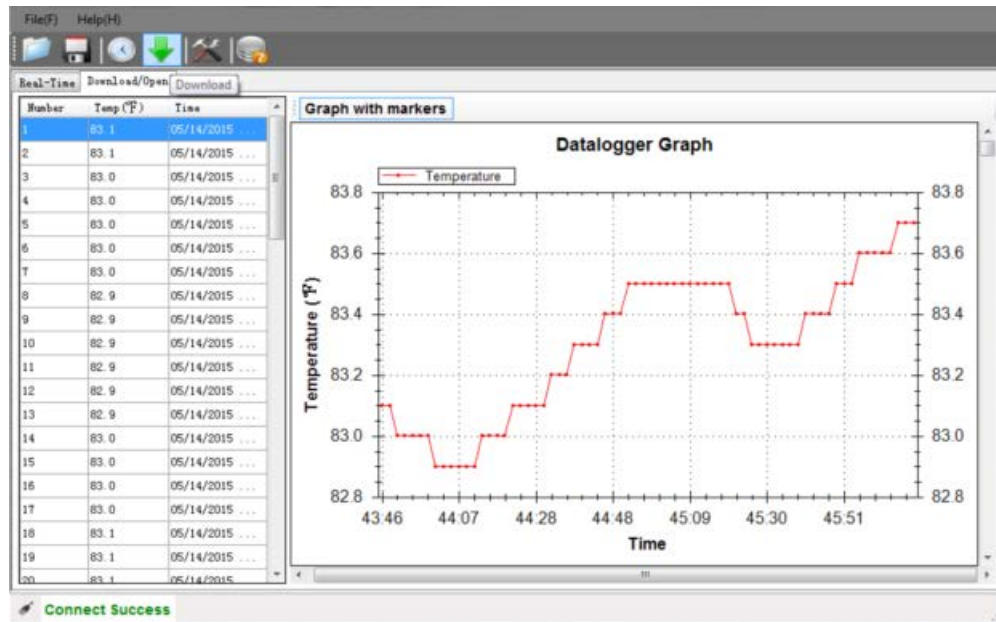


- Click the Real-Time icon on the menu bar to Start logging in Real time while the logger is attached to the PC.
- Click the Real-Time icon again to Stop the logging session.
- The current reading (top left), the sequence of measurements (bottom left table) and the Datalogger Graph of the readings is displayed.
- To save your Real-Time data, Stop the recording and click the File Save icon.

Data Download

To download the stored readings from the TH10 logger memory to the PC.

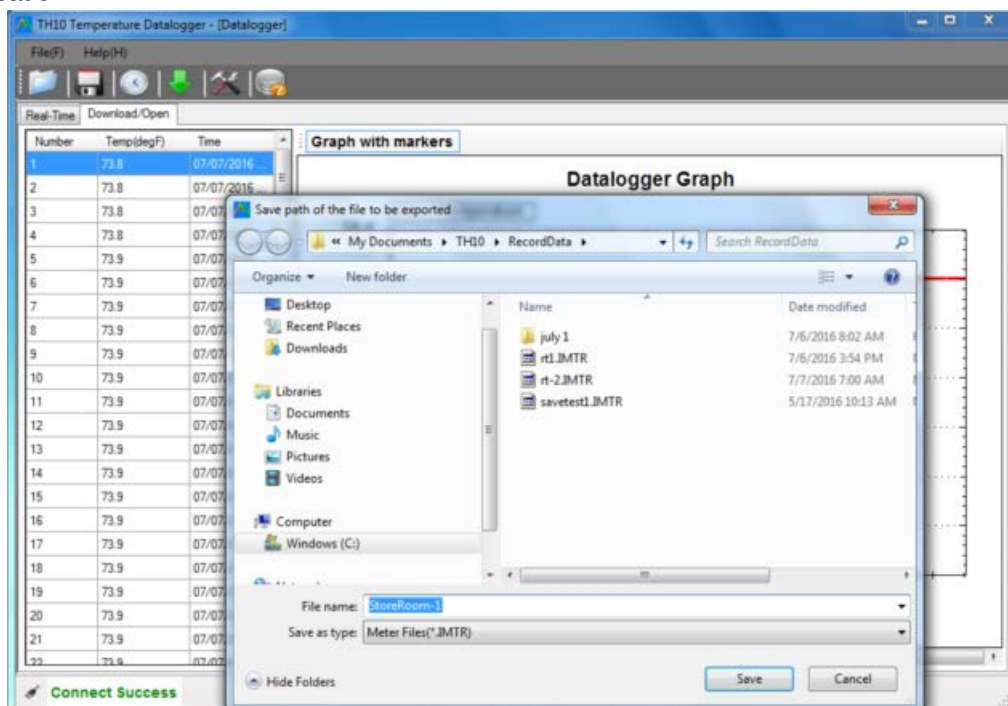
- A. Connect the TH10 to the PC's USB port.
- B. Open the TH10 Temperature Datalogger software program.
- C. Click the Download icon on the menu bar.
- D. The Window shown below will appear
- E. Click the Save to file icon
- F. Choose file type .IMTR for the binary graphing data file or choose type .CSV for a file in a CSV formatted table file that can be opened with Excel.



Note: The data recorded by the TH10 logger is always saved in Degrees C. If you want the data to be printed and saved as a file to the PC in Degrees F, the Logger setup setting for temperature must be set to Fahrenheit.

Save Data to the PC

Click the SAVE icon on the menu bar to save the data. Enter the file name and click “Save as type” to select either the binary Graph File (.IMTR) or select the CSV formatted table file(.CSV). Select SAVE to save the file to the desired location.



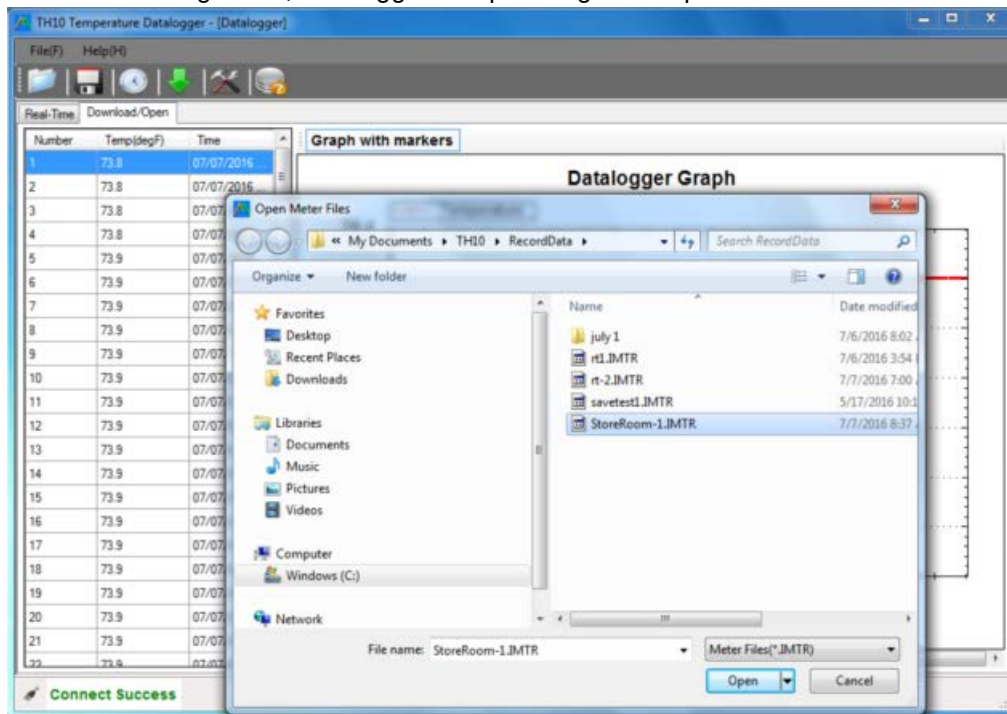
Open A Saved Data File

Click the OPEN icon on the menu bar to open a previously saved data log file.

The software will only open a binary IMTR formatted file for viewing within the datalogging software.

To Open a saved CSV formatted file, Use Windows Explorer to locate the file and open with Excel or Notepad.

Note: The data recorded by the TH10 logger is always saved in Degrees C. If you want the data to be printed and saved as a file to the PC in Degrees F, the Logger setup setting for temperature must be set to Fahrenheit.

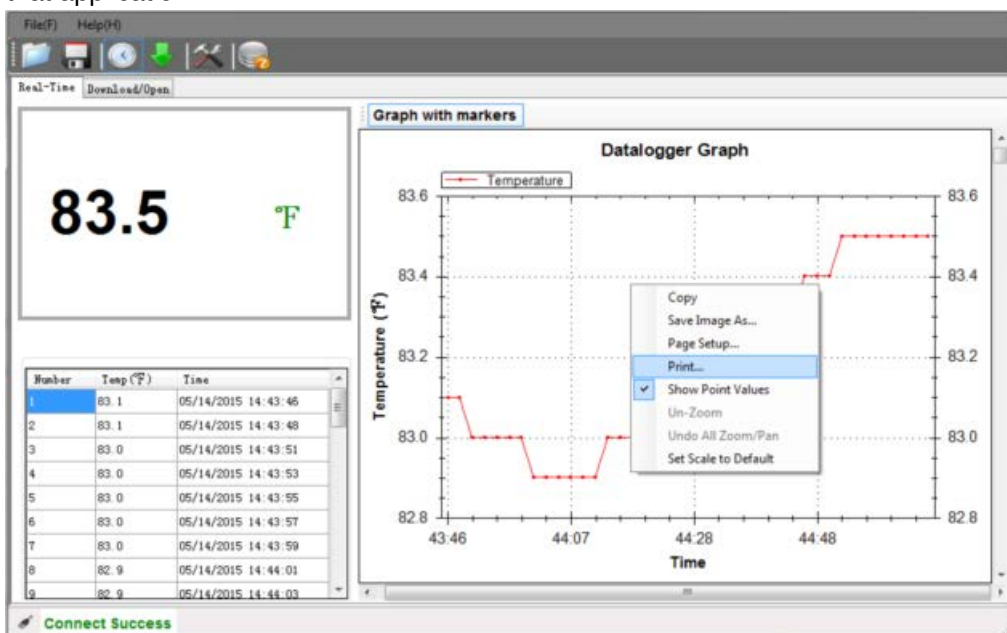


Graph Operations

Graph – Print Data

To print the saved Graph data, open a saved Graph data file (.IMTR) and Right-Click anywhere in the graphing window. Select Print.

To print the saved logger data in a table format, Open the saved data file (.CSV) in Excel or other word processor and print from that application.



Graph – Pan and Zoom

PAN – Left-click and hold the button, Move the mouse to move the image left and right and up and down.

ZOOM – Left click and release the graphed image.

Use the Mouse wheel to expand and contract the image.

Use the PAN feature to center the image in the area that you want to examine closer.


Undo Pan and Zoom – Right-click on the graphed image and choose Undo All Zoom/Pan or Set Scale to Default.

To highlight each measurement on the graph, right-click the graph and select Show Point Values.

Copyright © 2016 FLIR Systems, Inc.

All rights reserved including the right of reproduction in whole or in part in any form ISO-9001 Certified
www.extech.com

Documents / Resources

 <p>Page 1 of 1</p> <p>EXTECH</p> <p>Model TH10</p> <p>Software Help Guide</p> <p>TH10, Temperature USB Datalogger, TH10 Temperature USB Datalogger, USB Datalogger, Dat</p> <p>alogger</p> <p>© 2016 Extech Inc. All rights reserved. Extech is a registered trademark of Extech Inc. in the United States and other countries. TH10-101-001</p>	<p>EXTECH TH10 Temperature USB Datalogger [pdf] User Guide</p> <p>TH10, Temperature USB Datalogger, TH10 Temperature USB Datalogger, USB Datalogger, Dat</p> <p>alogger</p>
---	---

References

- [Instruments, A FLIR Company](#)
- [Extech is now on FLIR.com | Teledyne FLIR](#)