

Express K chen Jena Pre-Assembled with Soft Close Function Positioning Width 180 Cm Instructions

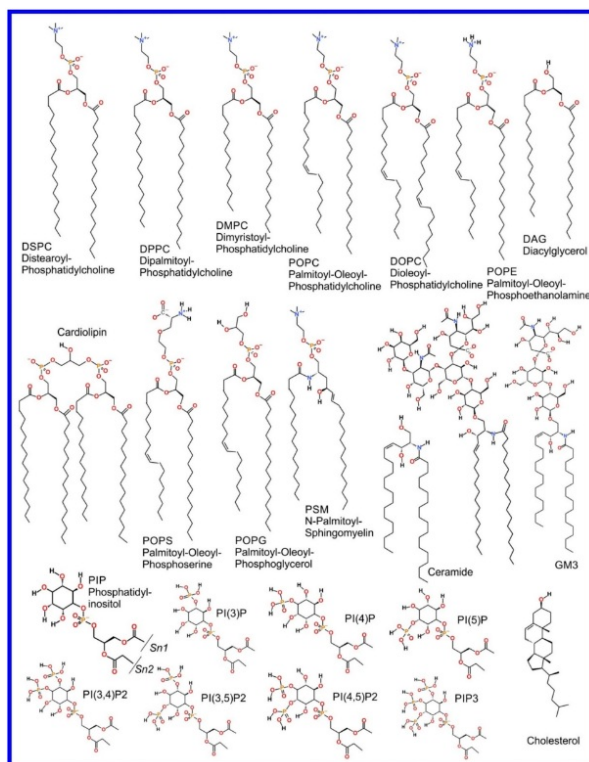
[Home](#) » [Express K chen](#) » Express K chen Jena Pre-Assembled with Soft Close Function Positioning Width 180 Cm Instructions

Contents [[hide](#)]

- [1 Jena Pre-Assembled with Soft Close Function Positioning Width 180 Cm](#)
- [2 Product Information](#)
- [3 Product Usage Instructions](#)
- [4 Safety instructions](#)
- [5 Installation instructions](#)
- [6 Base unit](#)
- [7 Anti-tipping device](#)
- [8 Worktops](#)
- [9 Maintenance Instructions](#)
- [10 Security Instructions for the End Customer](#)
- [11 Documents / Resources](#)
- [12 Related Posts](#)

EXPRESS

Jena Pre-Assembled with Soft Close Function Positioning Width 180 Cm



Product Information

The product is a fitted kitchen that comes with installation instructions and care instructions in multiple languages such as German, English, French, Dutch, Spanish, Croatian, Slovenian, Bulgarian, Italian, and Chinese. The instructions provide guidance on how to install the electrical appliances safely and how to maintain the kitchen properly. The user manual also provides information on the risks of not following the instructions properly, such as bodily injury and material damage during installation. The kitchen should only be installed by trained specialists to ensure proper installation and avoid any damage caused by faulty installation.

Product Usage Instructions

- Read the installation and safety instructions carefully before installing any electrical appliances.
- Do not hang on wall units as they could fall off the wall, causing bodily injury.
- Do not lean on solitary wall units as they could slide along the mounting rail.
- Disconnect the kitchen from the power supply before changing lamps or cleaning electrical appliances to avoid danger to life.
- The tassels multiuso and screws provided with the kitchen are suitable for materials used for the construction of walls such as brick, limestone, and perforated brick.
- Before drilling a hole, ensure that there are no gas lines, water lines, electrical lines, heating lines, or drains passing through the selected point on the wall or floor.
- The manufacturer assumes no liability for any damage caused by faulty installation.

Safety instructions

Please precisely observe the following instructions. They avoid bodily injury and material damage during installation.

Before drilling, make sure that there are no conduits for gas, water, power, heating or drainage under the relevant sections of the wall / floor. The all-purpose rawl plugs and screws supplied with every

Express kitchen are suitable for the following wall materials:

- Solid material (solid brick MZ, solid sand-lime brick KS)
- Perforated material (hollow brick Hlz, hollow sand-lime brick KSL)

Special rawl plugs must be used for gypsum plaster board, aerated concrete and insulating boards; these are available from retail outlets. The wall materials must always be checked and determined before installing the unit! Before drilling, check that there are no water or gas pipes and no live cables in the area to be drilled.

Please observe the assembly instructions and safety precautions of all the electrical appliances that you install.

As a general rule, tall units must be affixed to walls to ensure stability! Some base units must also be affixed to the wall with a bracket due to construction or design. For that reason the technicians installing the kitchen must ensure that all the pieces delivered are secured against tipping forward during and after completing the assembly, as there could be a risk of bodily injury. Wall units must be affixed to the wall in such a way that even with a load (for example, while opening cupboards that have flap door fittings, there is no danger of them falling / breaking loose from the fastenings! Use dowels and screws appropriate for the wall type. (100812)

Do not hang on wall units! They could fall off the wall. Risk of injury!

Do not lean on solitary wall units. They could slide along the mounting rail. Disconnect from the power supply before changing lamps and cleaning electrical appliances. Danger to life!

The Firing Installations Ordinance – FeuV (§4 Setting up heating appliances) stipulates that, when a heating appliance dependent on room air (e.g. gas heater, wood-fired stove) is operated simultaneously with an exhaust fan (e.g. extractor hood), carbon monoxide must not be drawn into the flat / house from the heating appliance. As soon as an extraction system is switched on, negative pressure results in a confined space. The pressure may only be compensated by the inflow of fresh air from outside and not from the heating appliance. Authorization for use and guidelines for ensuring pressure equalization should always be obtained from your local chimney sweep.

Installation instructions

General installation

This fitted kitchen should only be installed by trained specialists. Please read the installation and security instructions prior to assembly!

If the instructions are not followed properly or the installation is carried out incorrectly, this could have a detrimental effect on the kitchen's serviceability and/or cause property damage or personal injury. The manufacturer assumes no liability for any damage caused by faulty installation!

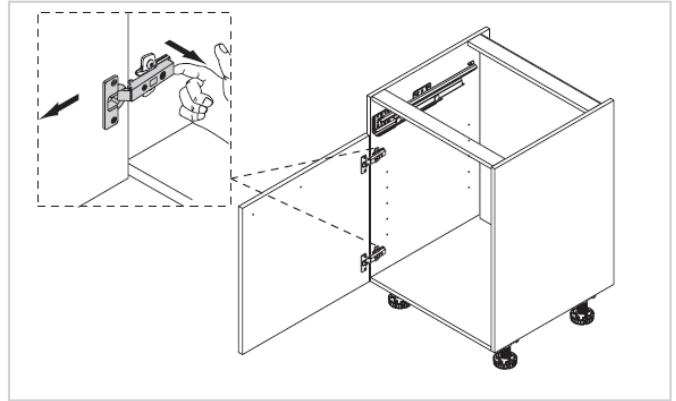
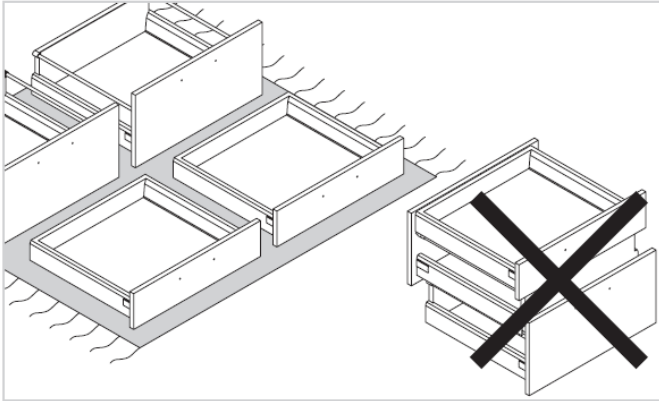
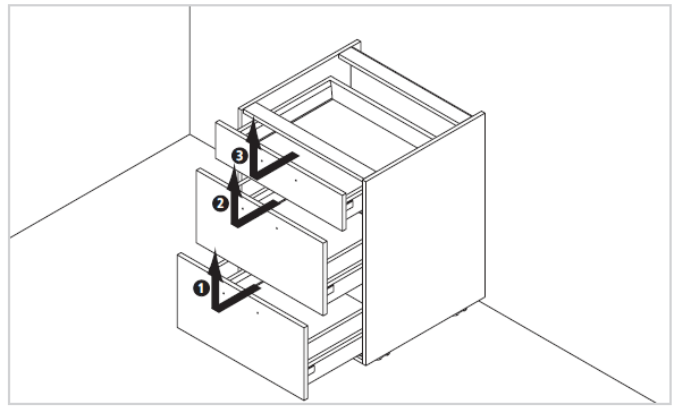
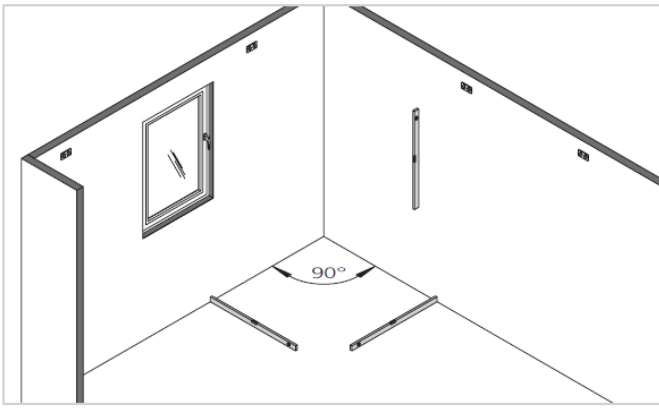
Please check the furniture components and electrical appliances supplied against the order/delivery slip and kitchen planning for completeness.

This facilitates processing of claims. In order to avoid damage during transport, remove the packaging – without using sharp tools – only in the customer's home.

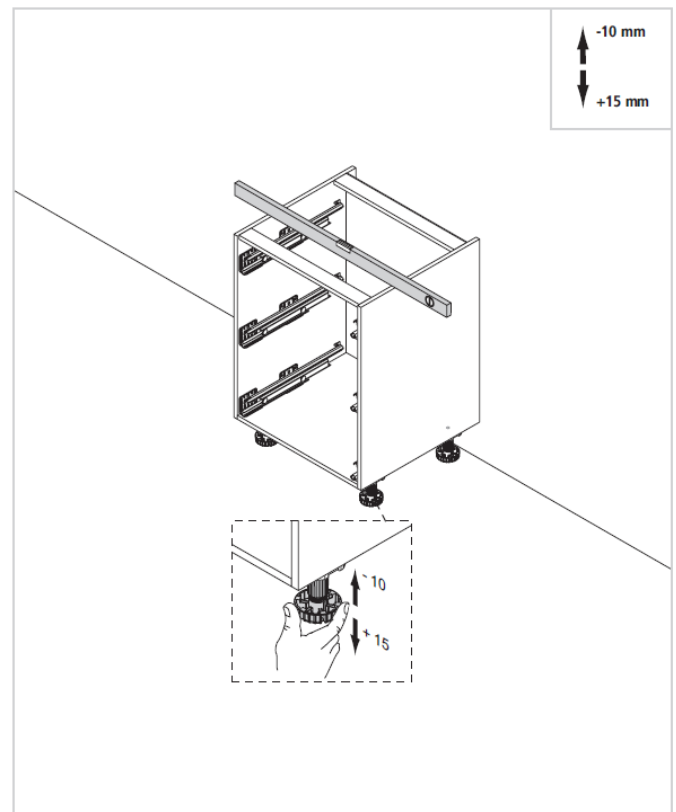
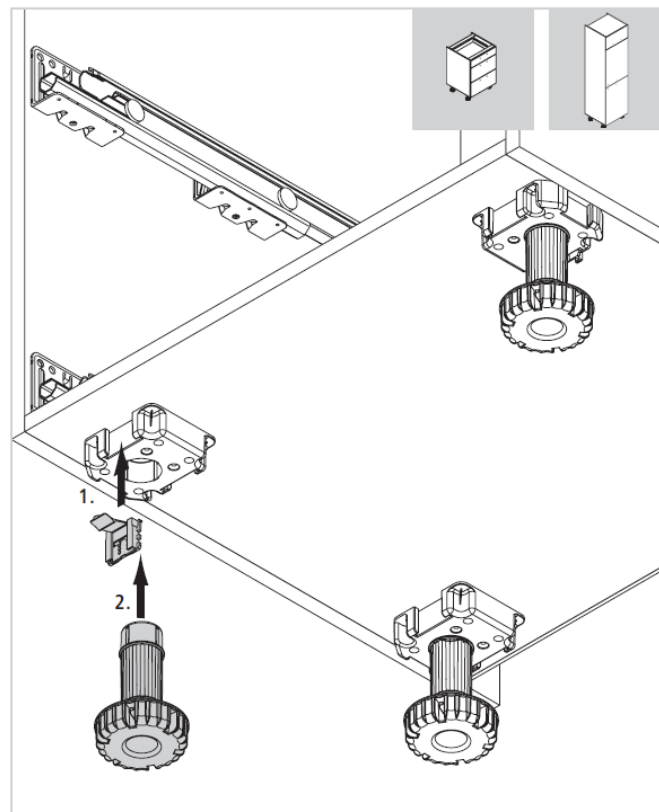
Only appropriately trained specialists, observing the applicable safety regulations, may perform work on electrical and gas appliances, in addition to water and drainage connections.

Once installation is complete, the kitchen must be delivered in a clean condition. Thoroughly remove all sawdust and adherent soiling with the aid of a suitable cleaner.

First steps



Plinth feet



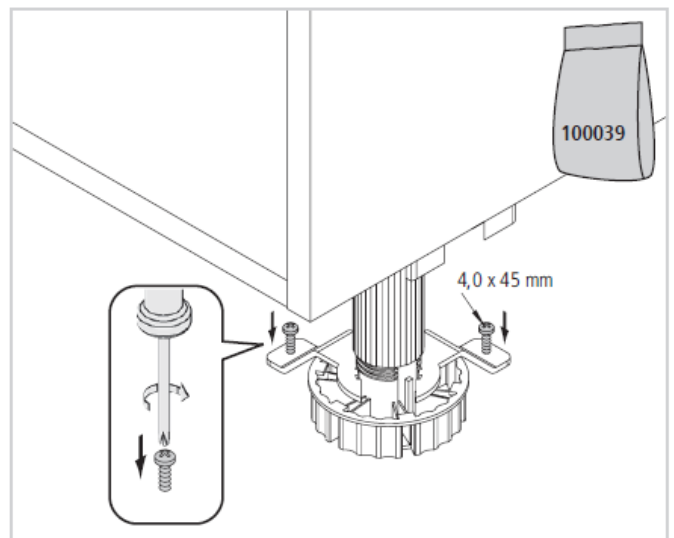
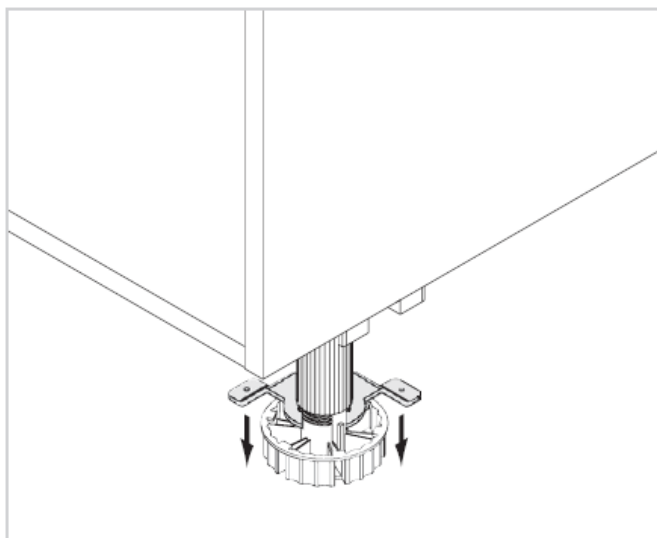
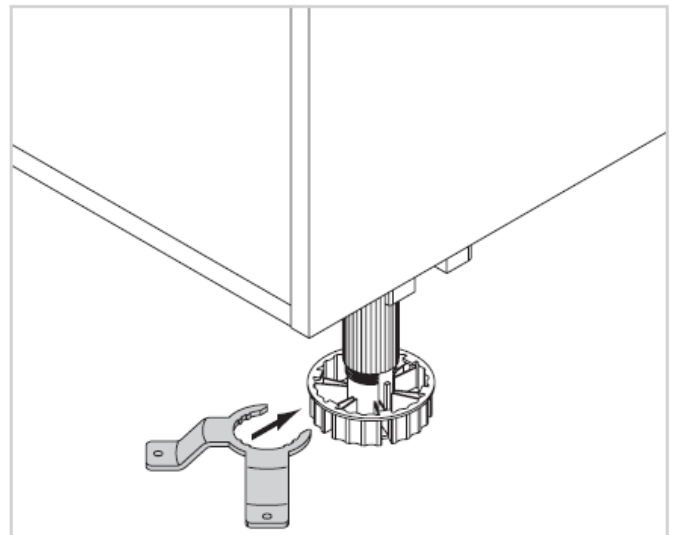
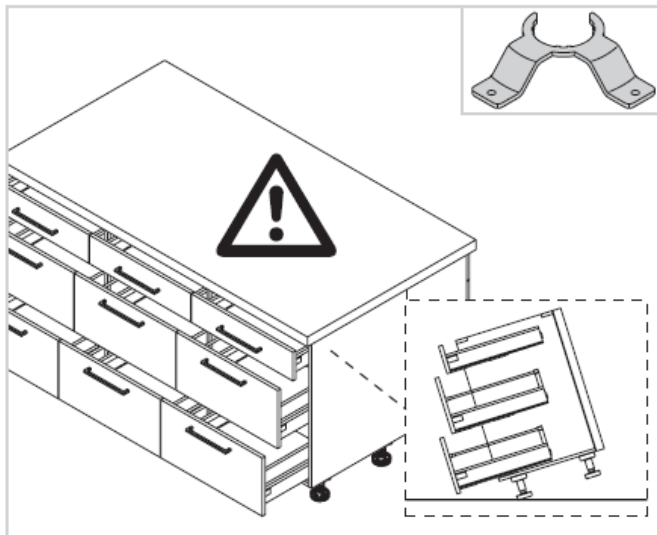
Base unit

Adjustment foot – fixing

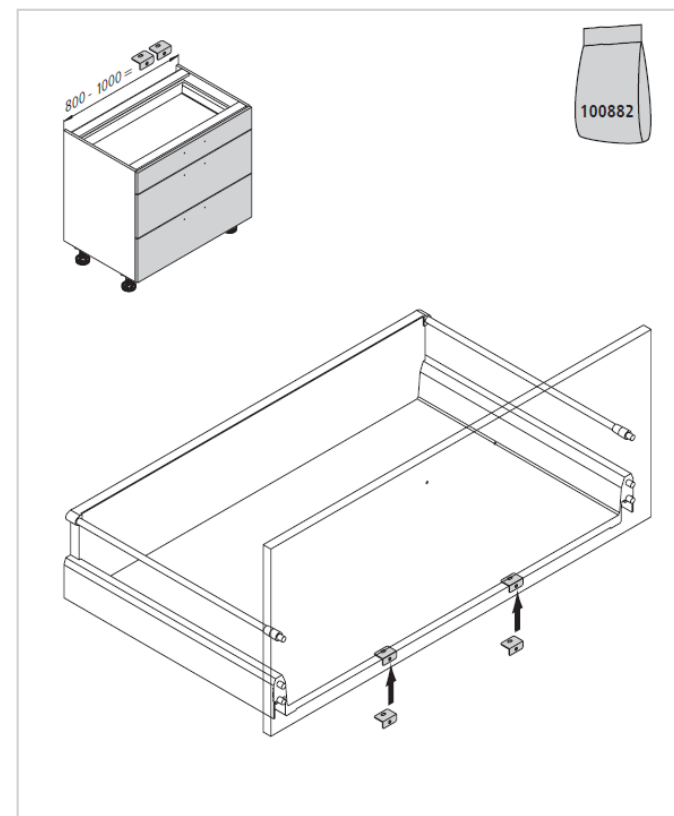
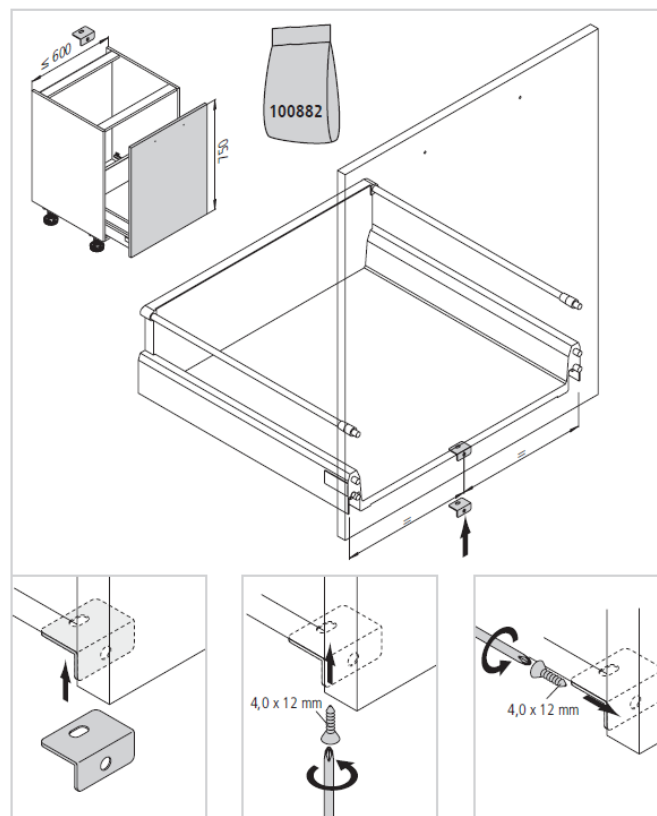
Island solutions must be secured against tipping to the front. To do so, use the fixing fitting “ZFUSS-BEF”.

Ensure that there are no floor heating elements underneath the flooring! If that's the case, no drilling must take place! As an alternative, affix the island with silicon or construction glue.

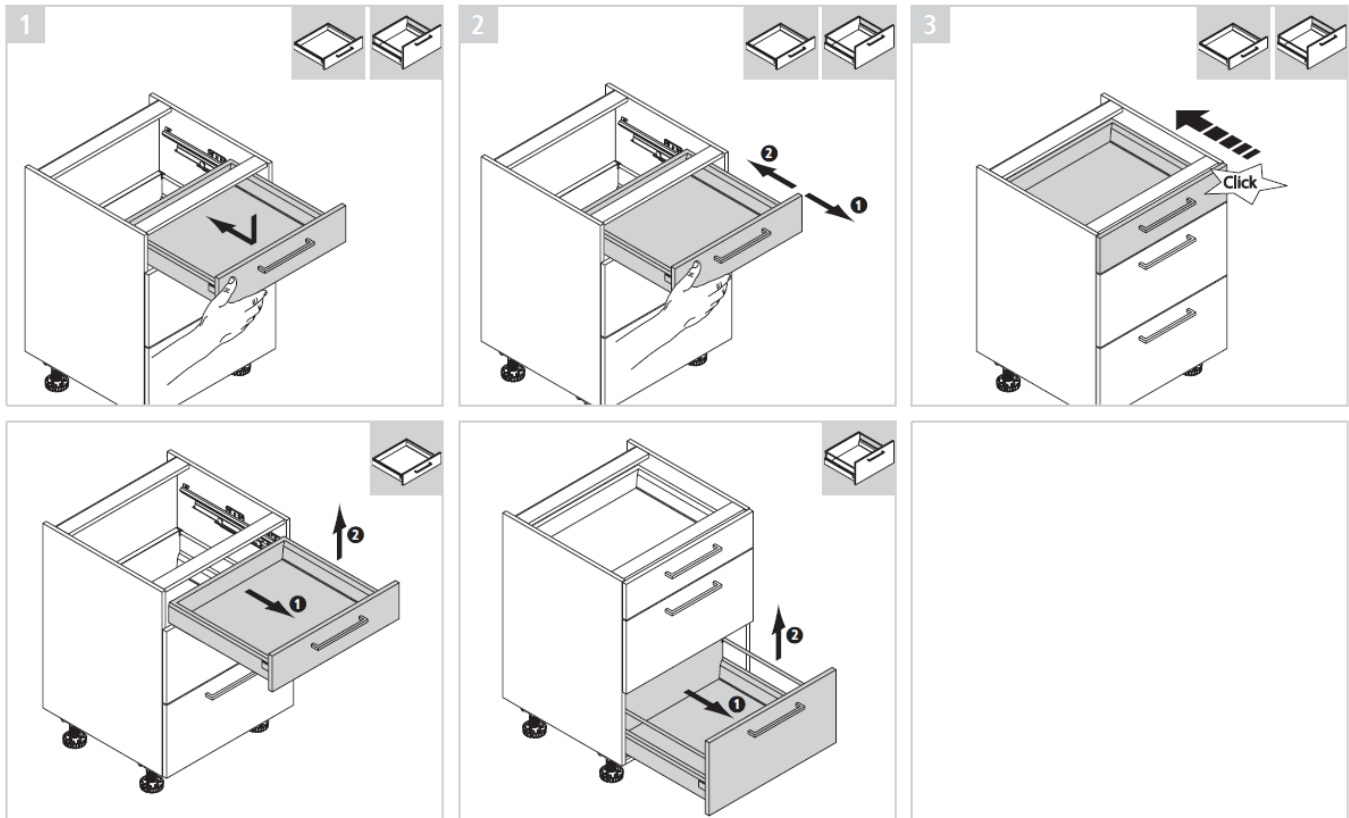
CHECK THE STABILITY AFTER INSTALLATION!



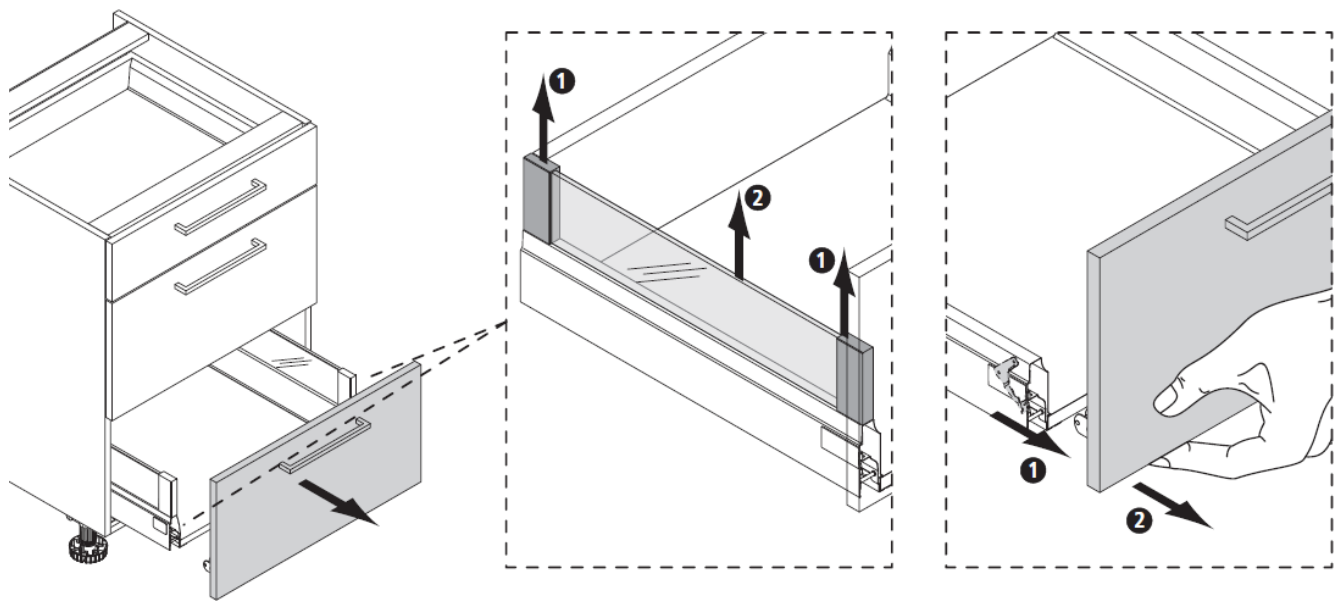
Installing eccentric fitting



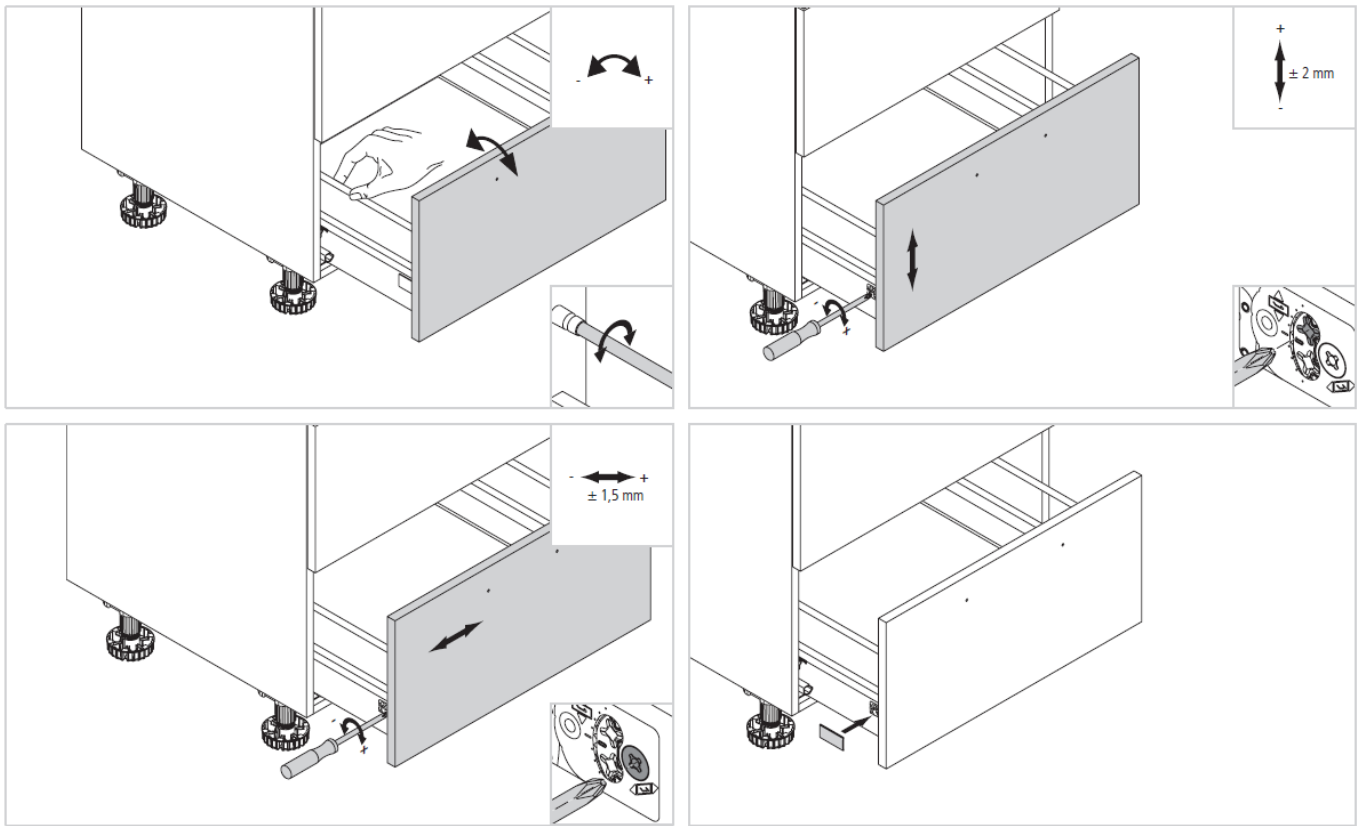
Installation / Removal



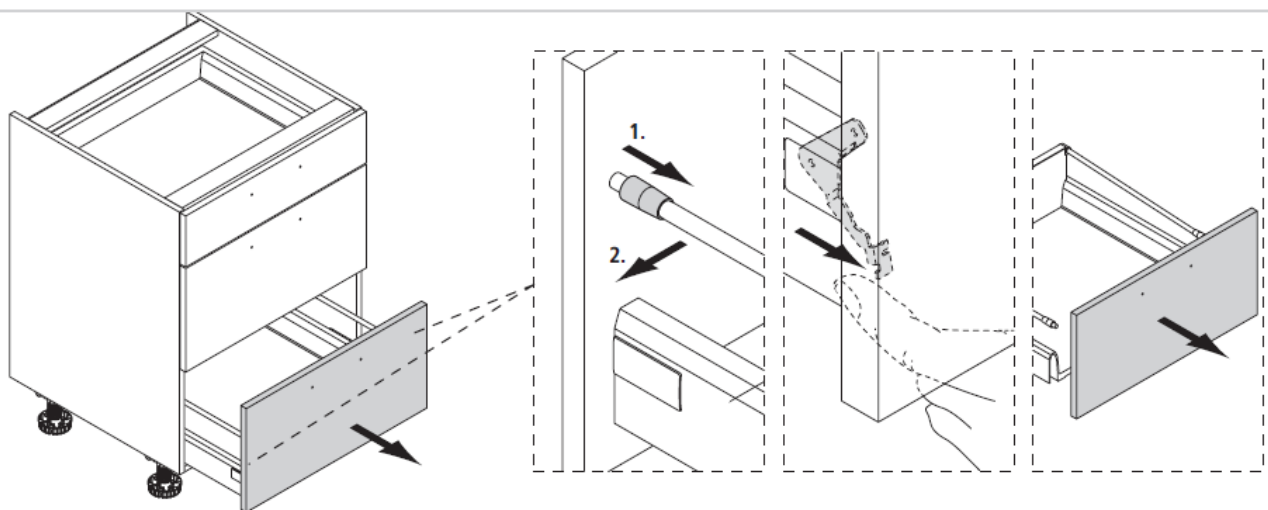
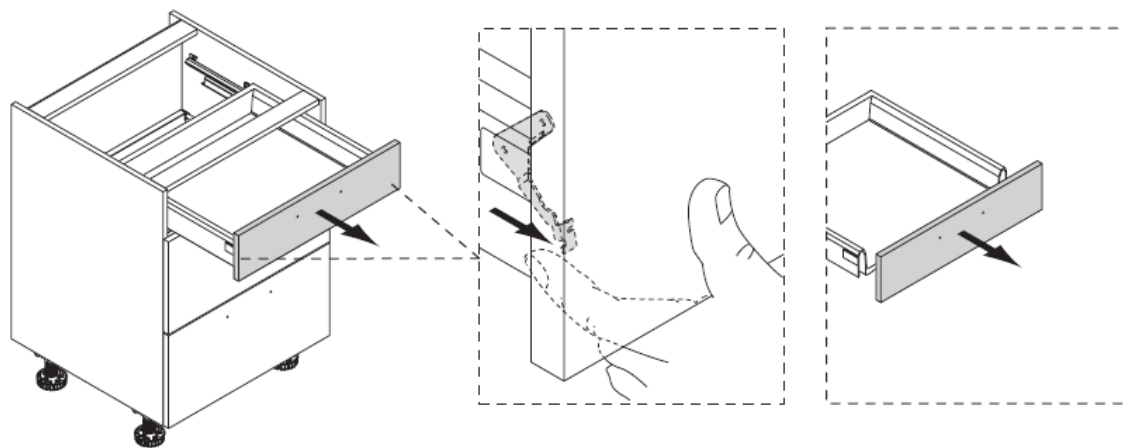
Removing glass frame



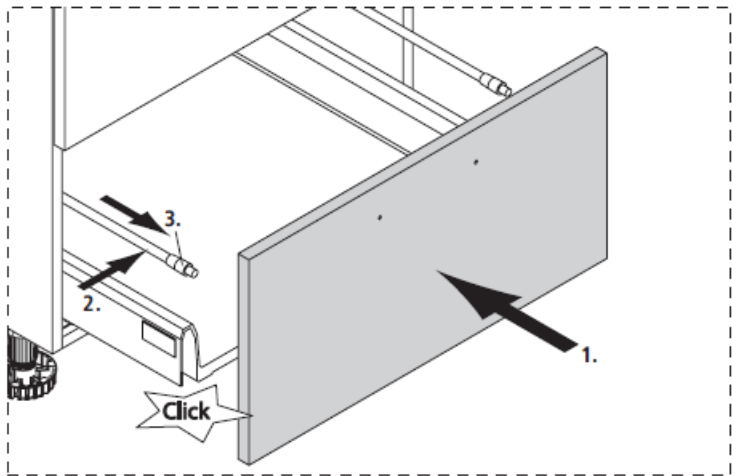
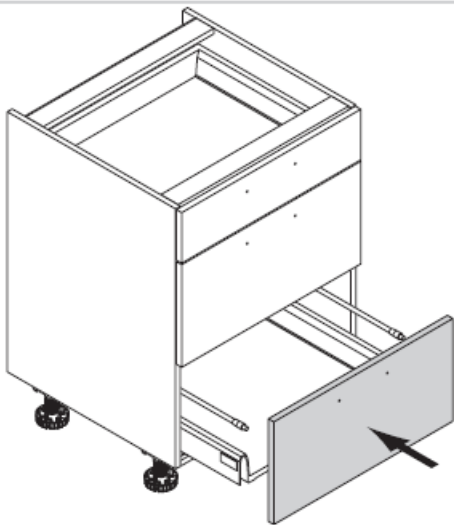
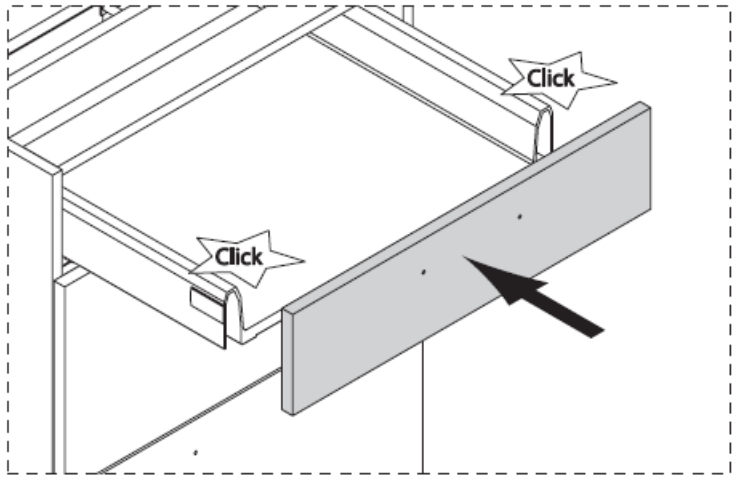
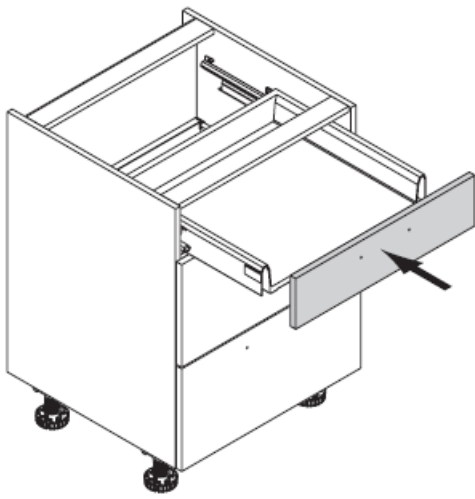
Adjustment Drawer, Pull-out



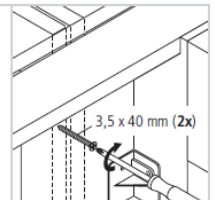
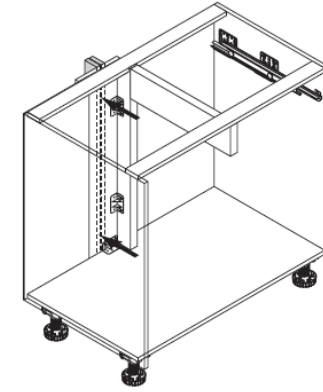
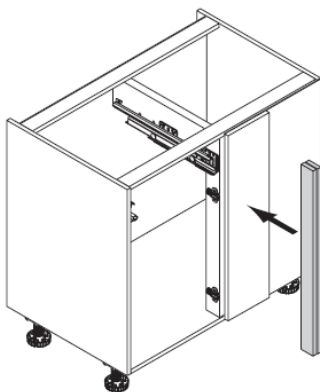
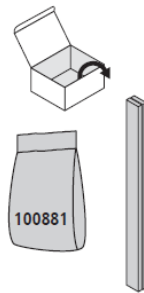
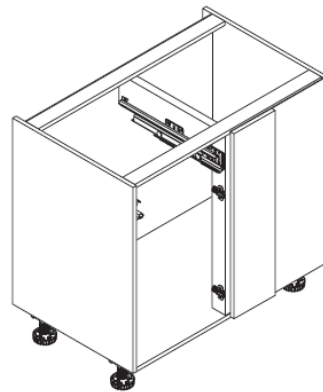
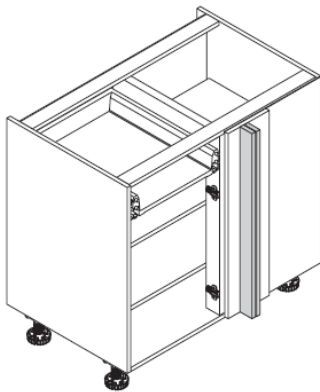
Removing Front Filler



Fitting Front Filler



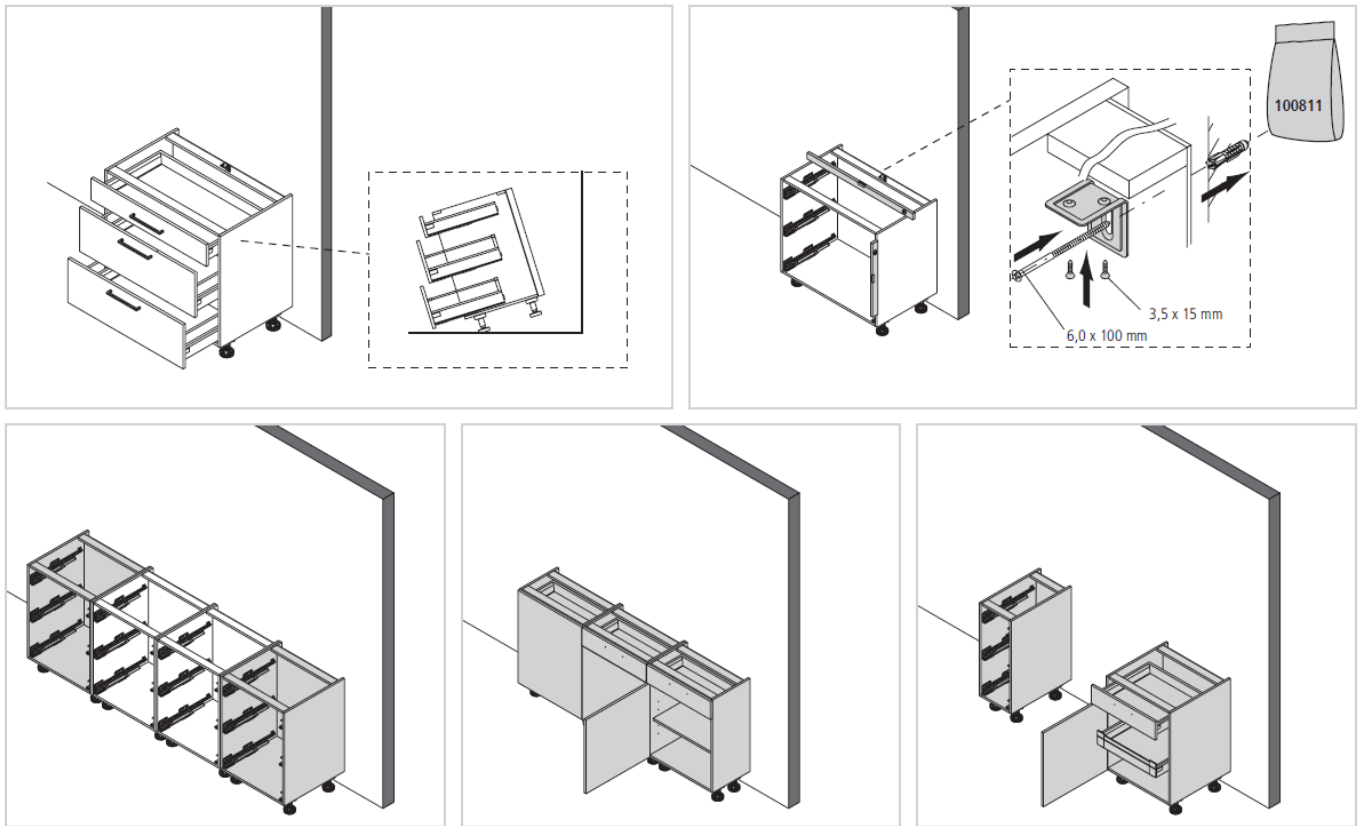
Corner filler panel



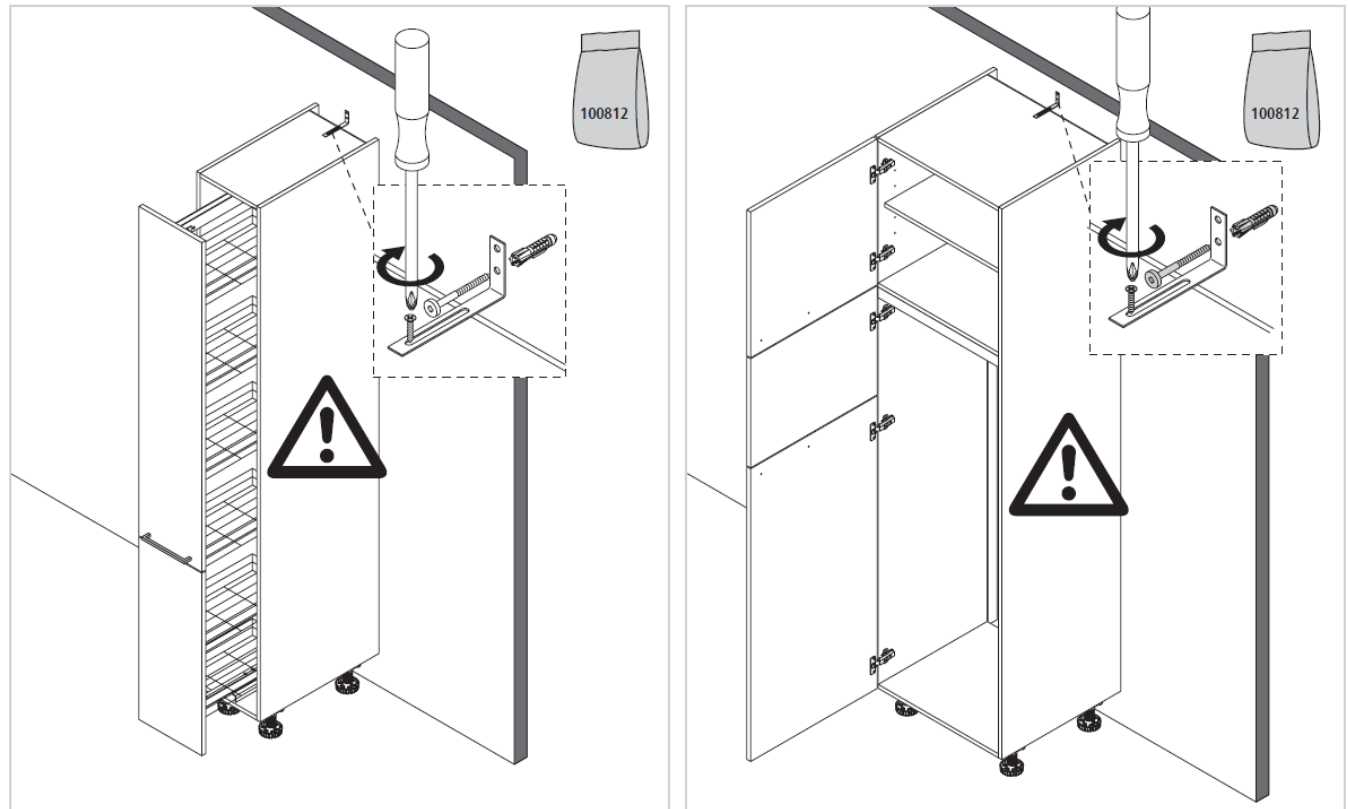
Anti-tipping device

Base unit

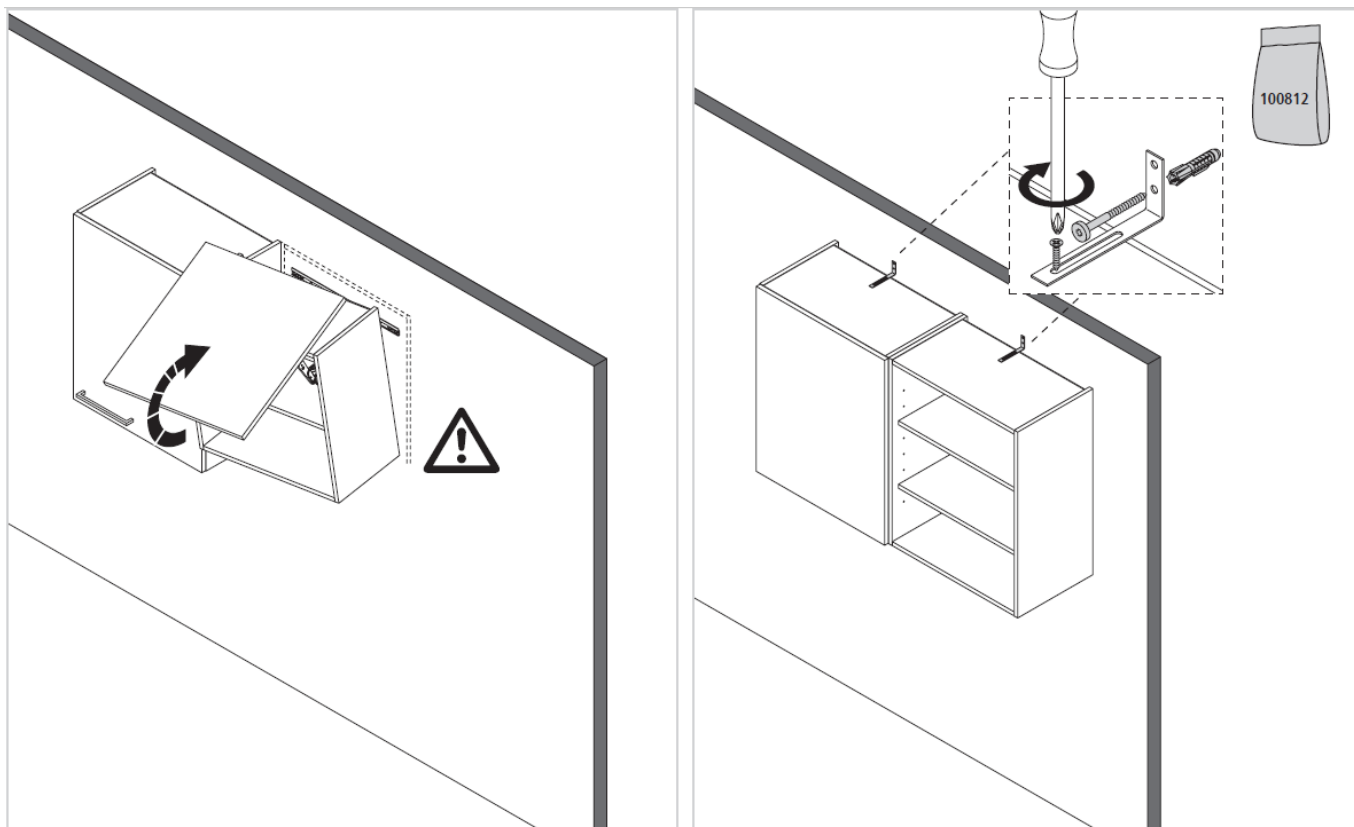
It is the responsibility of the fitter to check the customer's premises and ascertain whether standalone units or units forming part of a fitted kitchen need to be secured to prevent them from tipping forwards!



Tall Units and Appliance Units



Wall Units



Worktops

Worktops 40 mm

This worktop has been manufactured with all due care and attention and carefully packed.

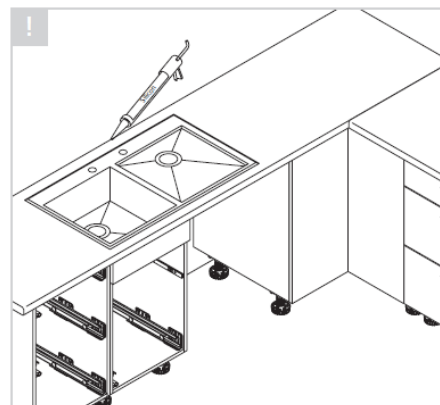
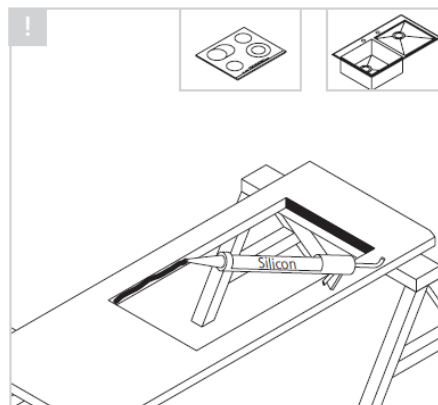
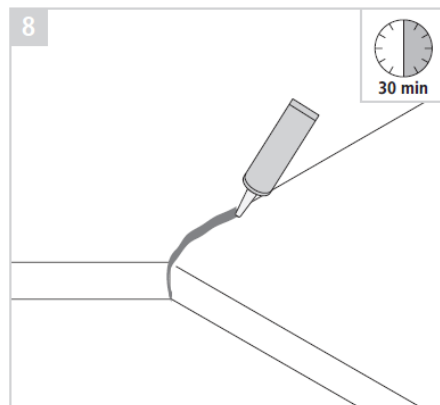
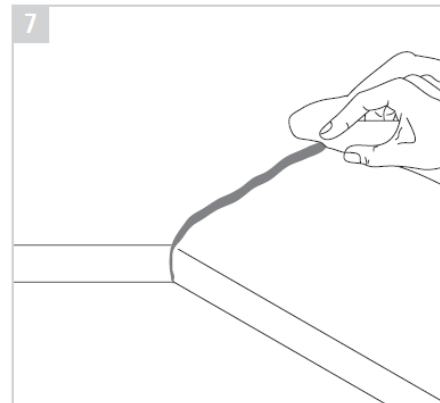
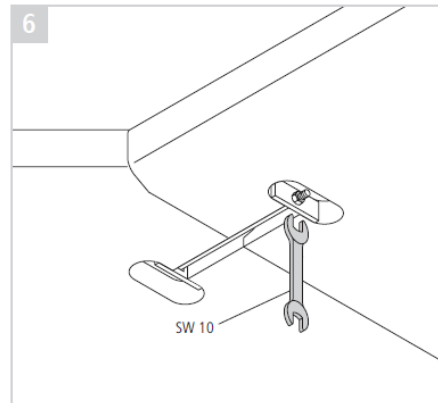
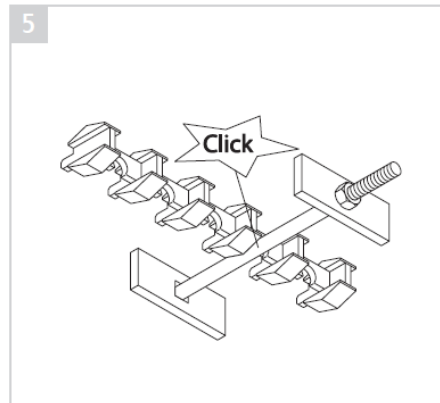
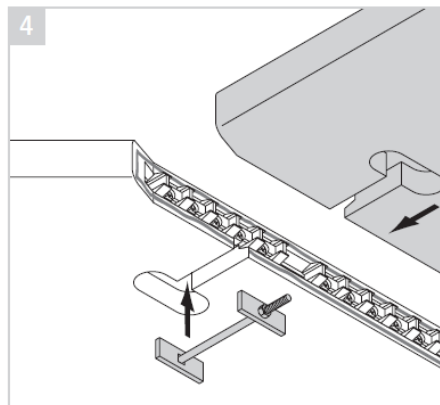
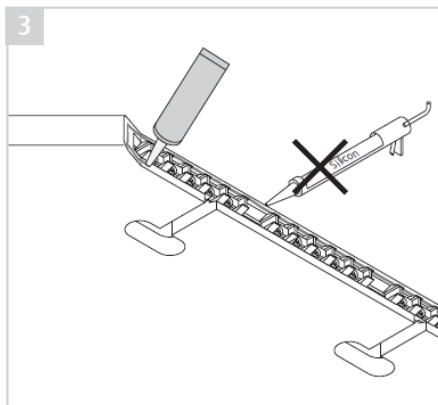
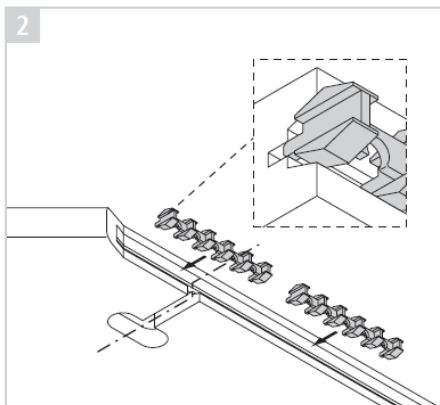
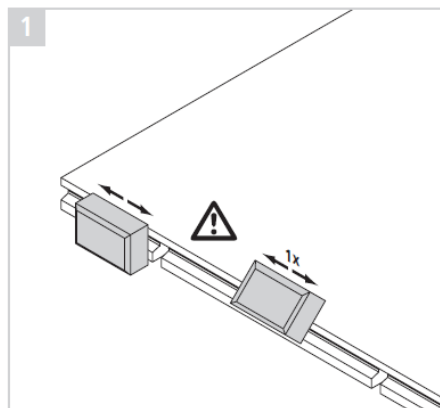
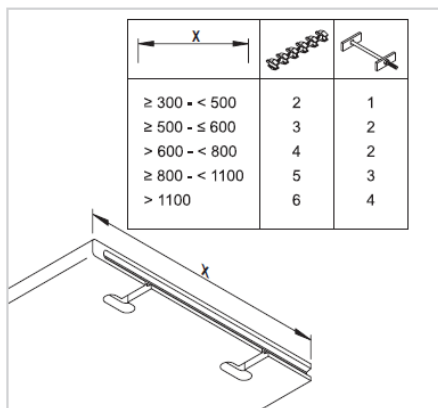
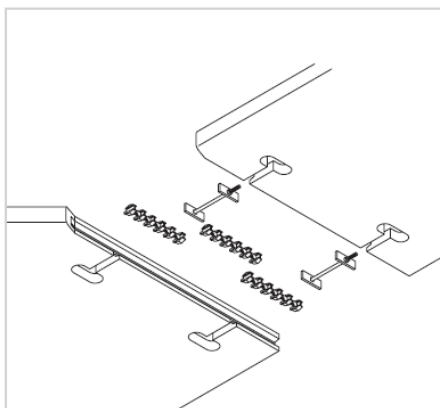
However, we strongly recommend, that you inspect the worktop before fitting, for any possible manufacturing faults or transport damage. Claims for any damages exceeding the value of the goods (e.g. for the removal of the worktop) are not accepted.

Please also note that worktops must be carefully sealed with silicone or a water-proof adhesive around cutouts and where they join in the wall.

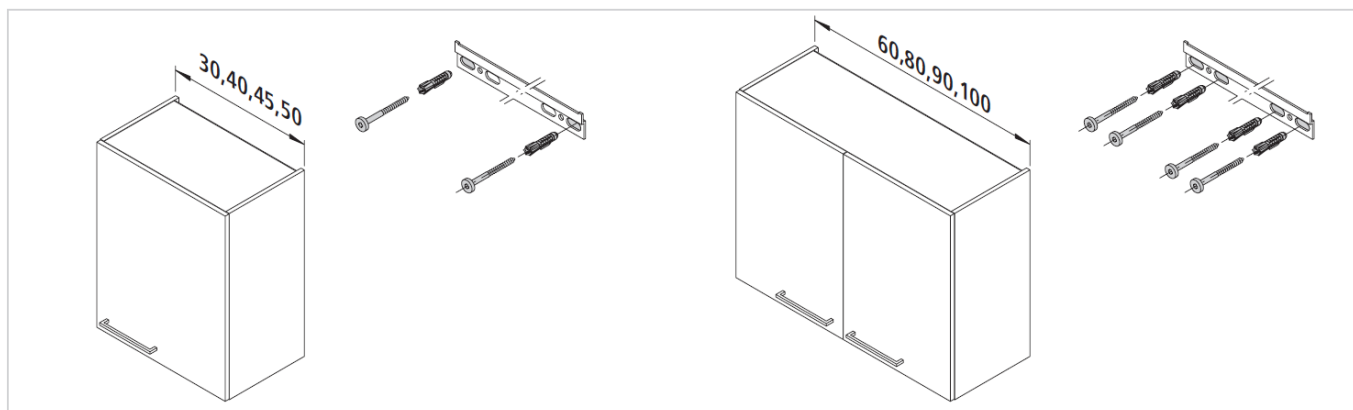
Please note the following for worktop joints:

- Check worktops for accurate alignment and adjust as necessary.
- At those places, where the adhesive has not come out of the joint, moisture can be absorbed. So please after 30 min. apply another limegrub onto the joint and work in the glue carefully!

If not observed any guarantee claims will be void! We do not accept any responsibility for water damages!

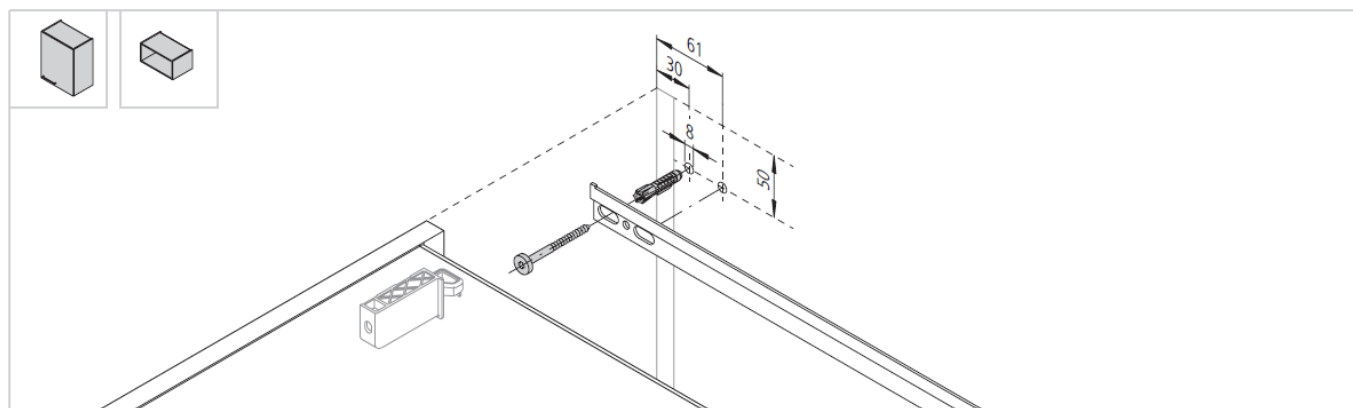
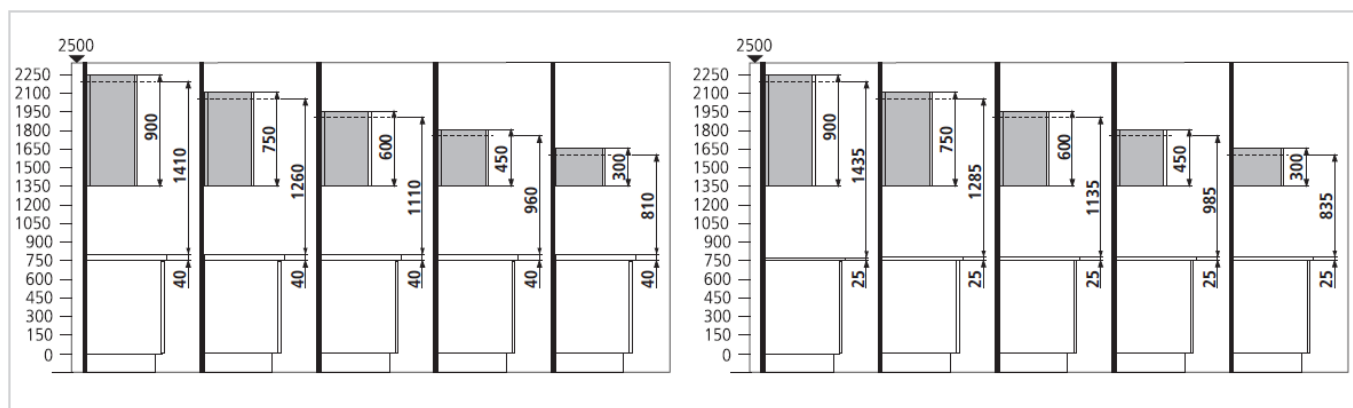


Wall attachment

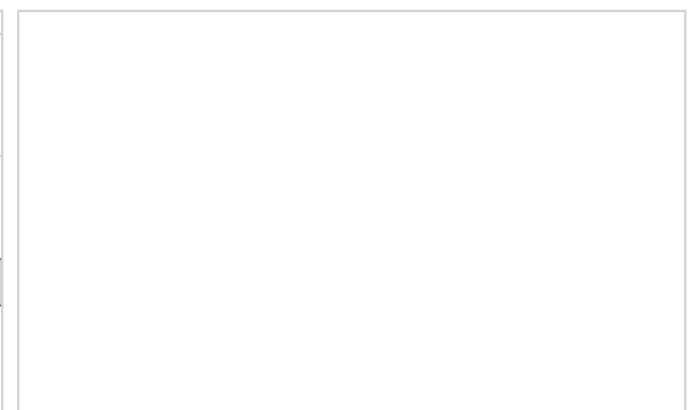
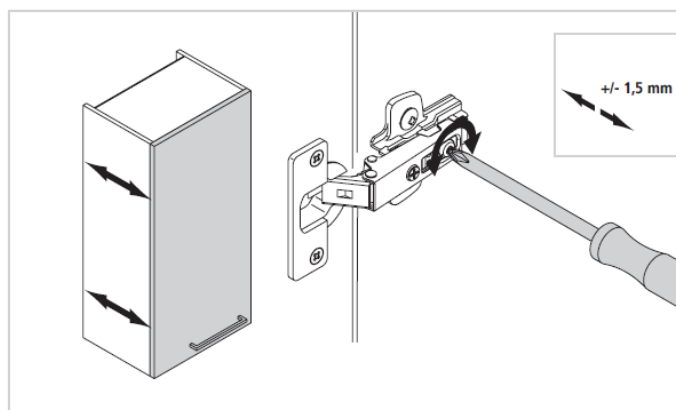
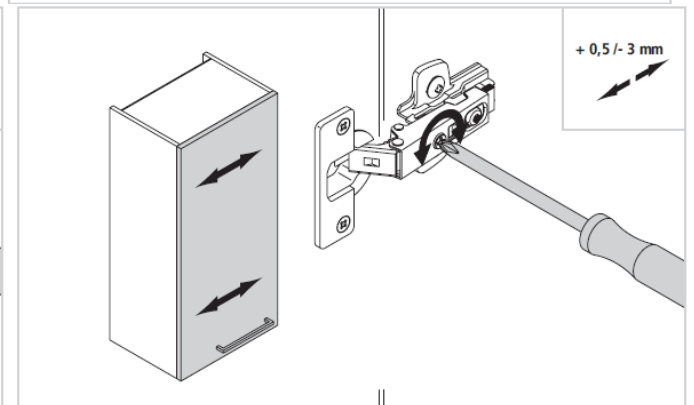
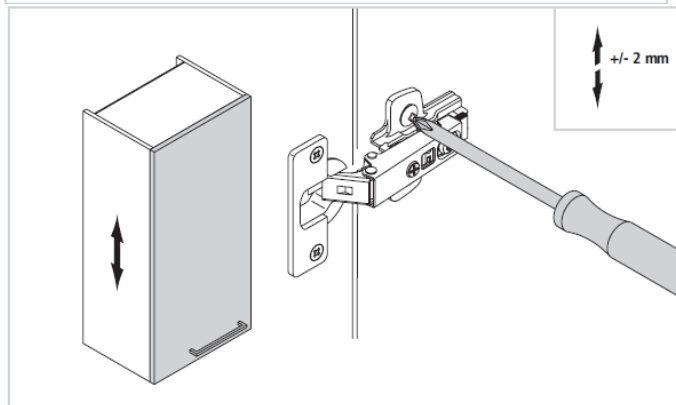
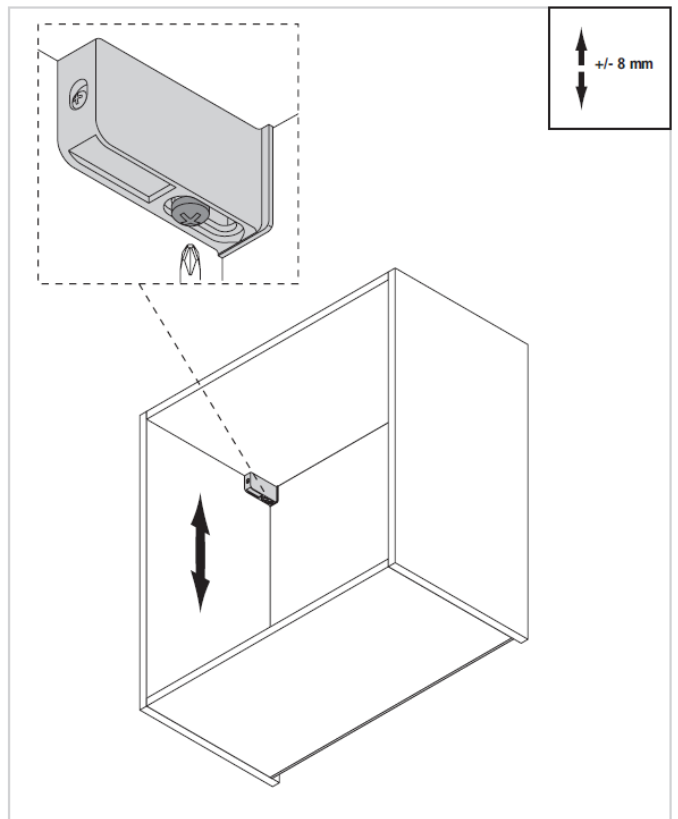
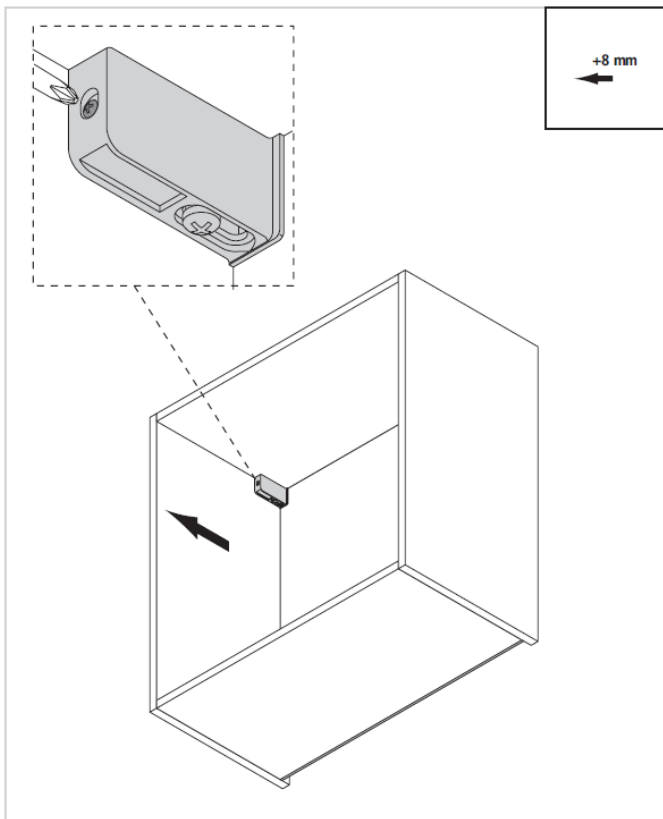


Wall Units

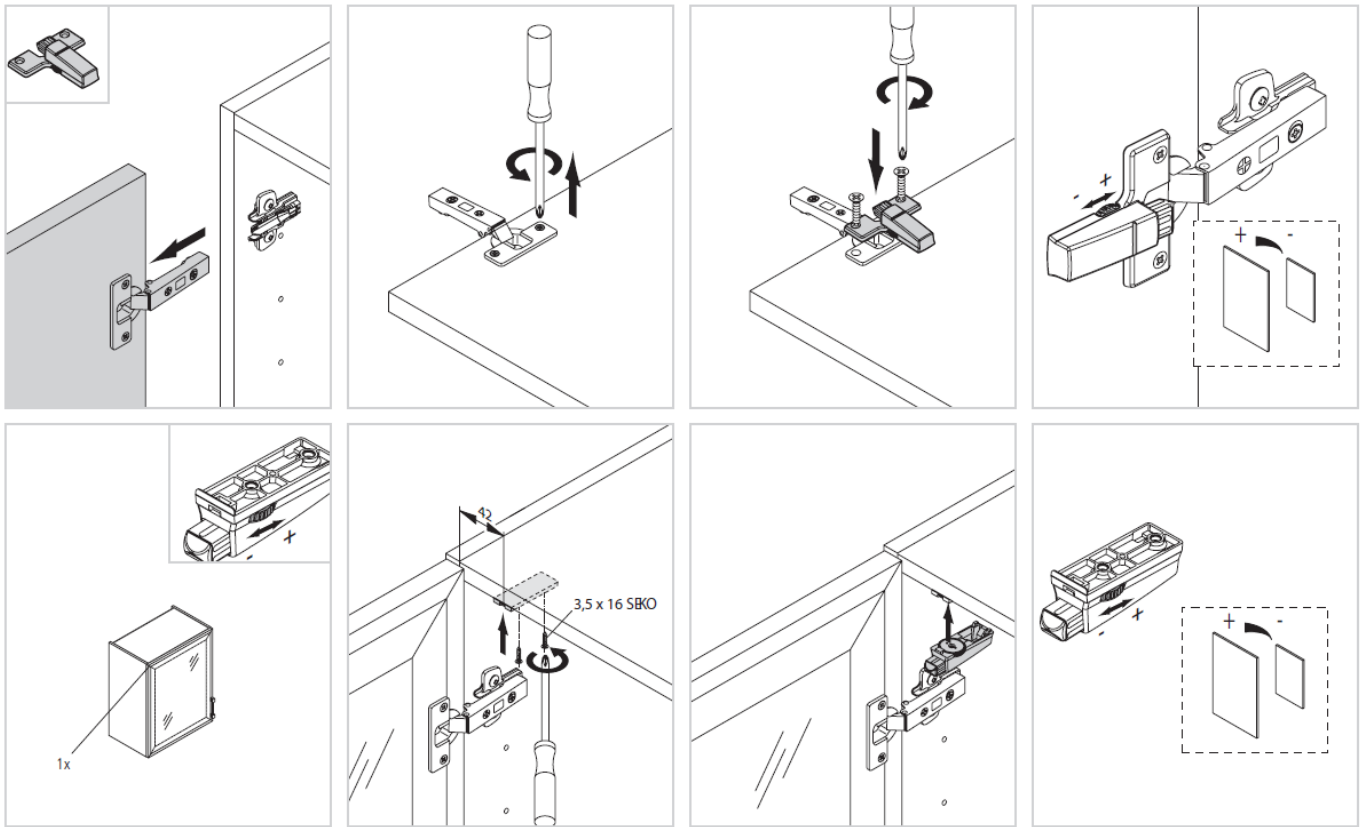
Wall attachment



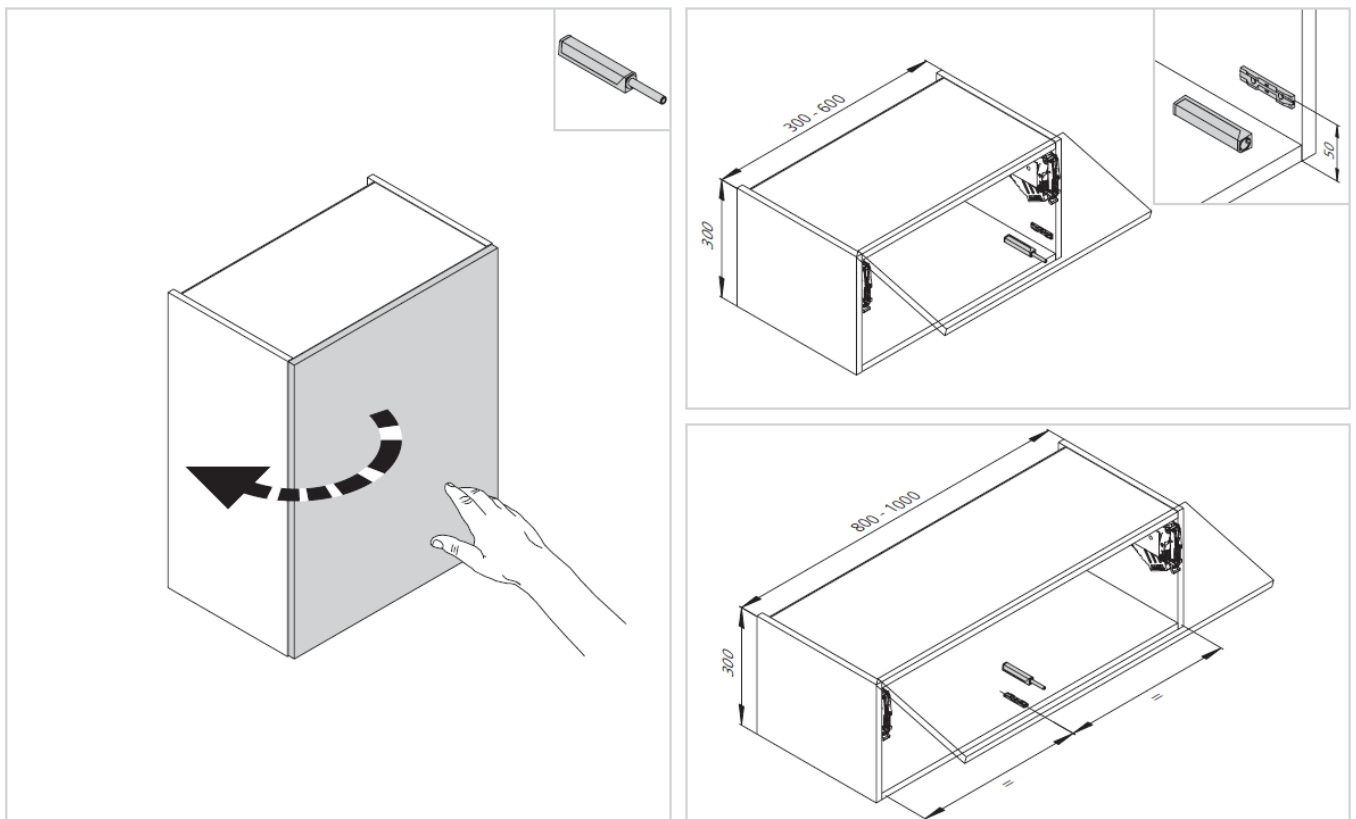
Adjustment



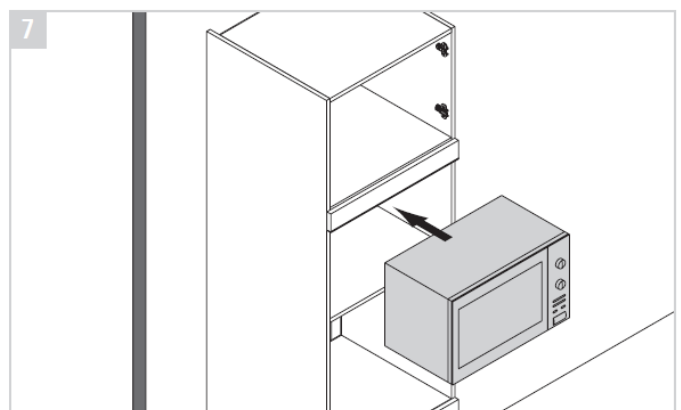
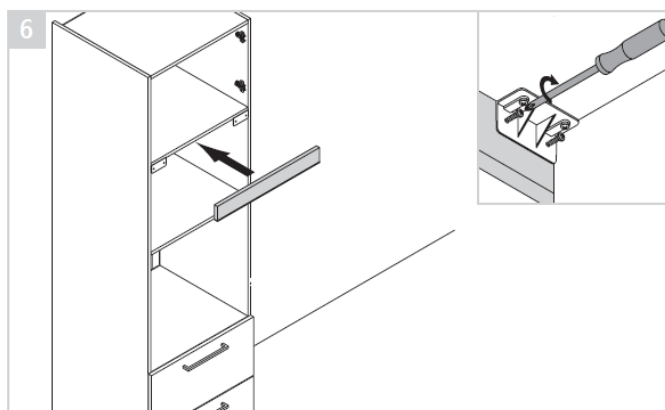
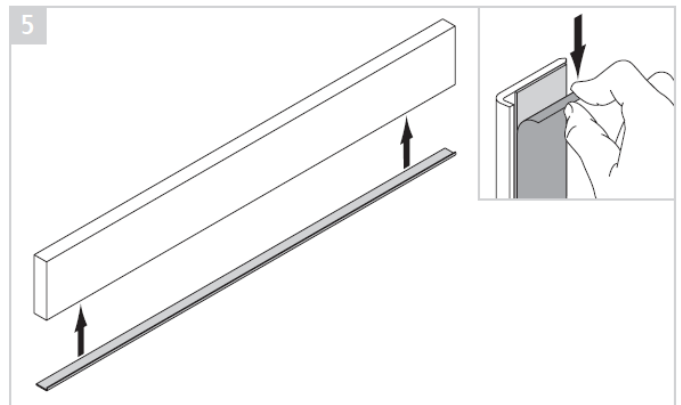
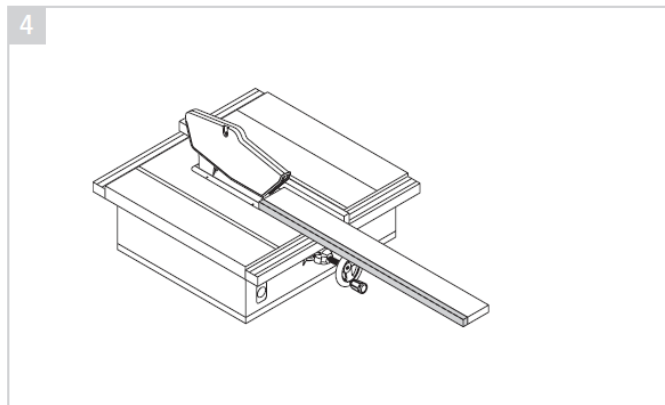
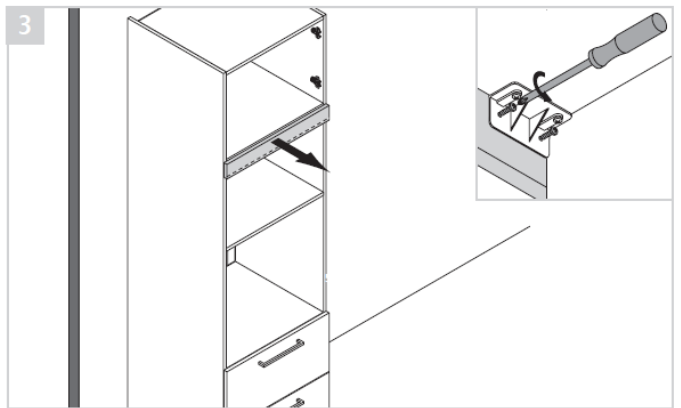
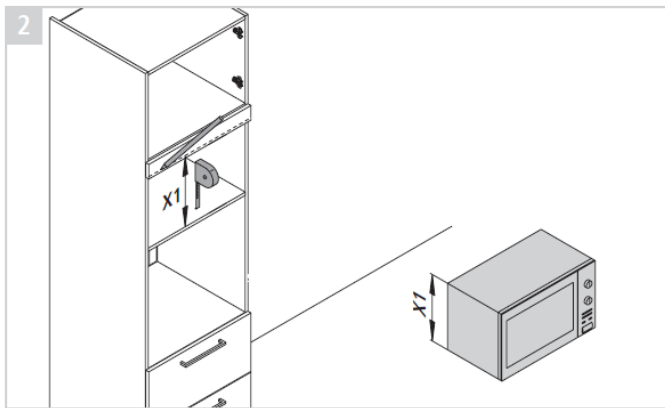
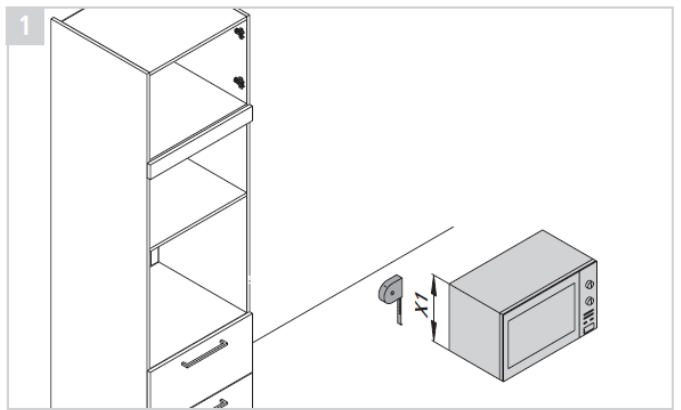
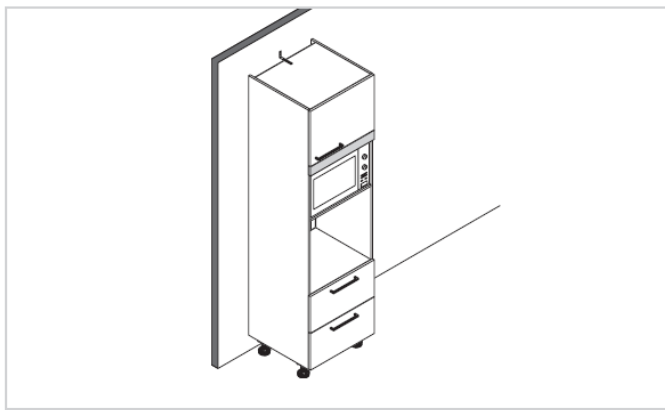
Cushioning



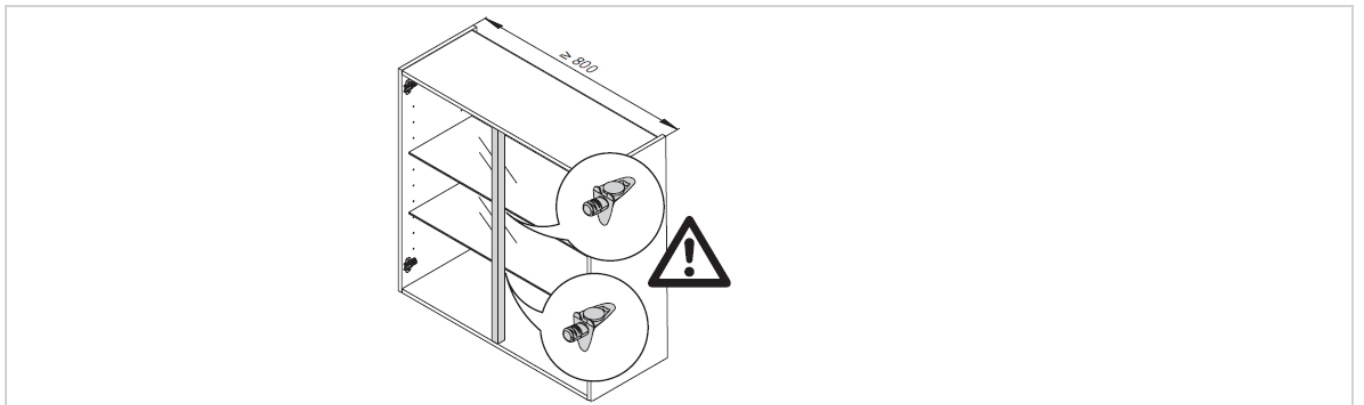
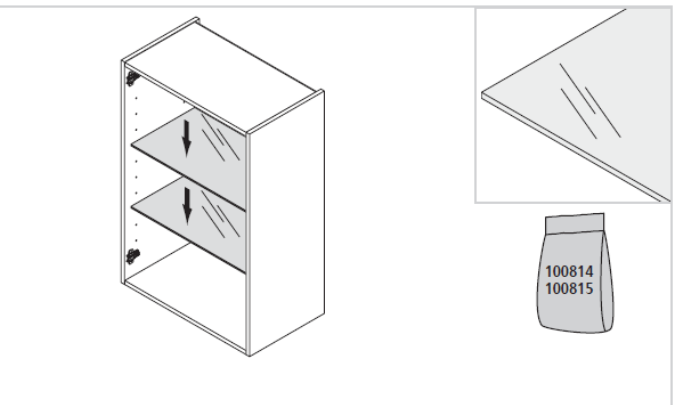
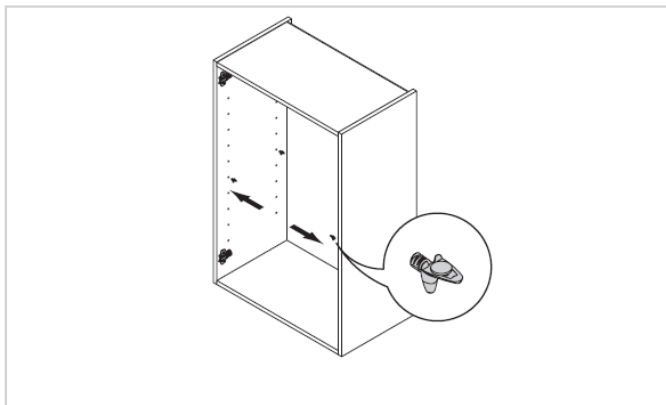
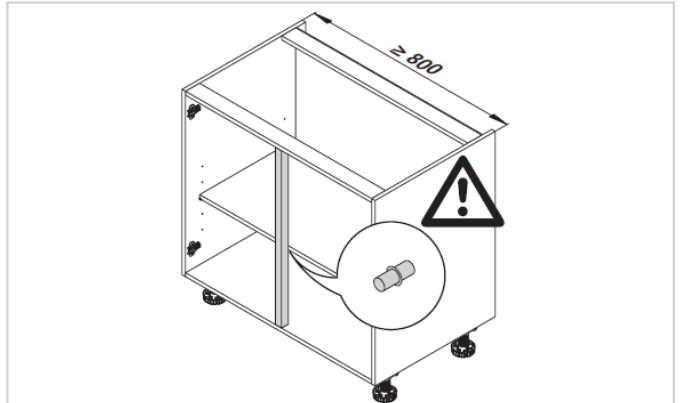
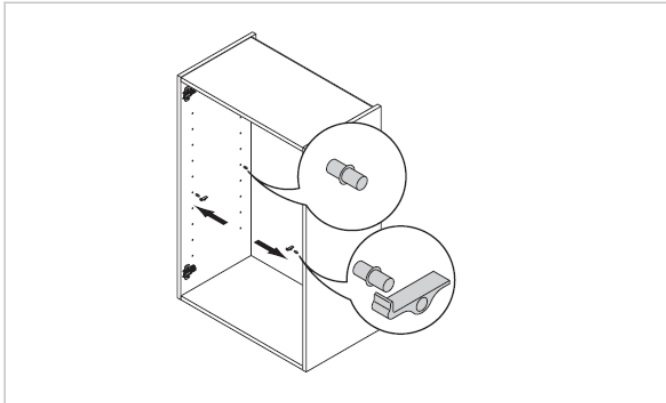
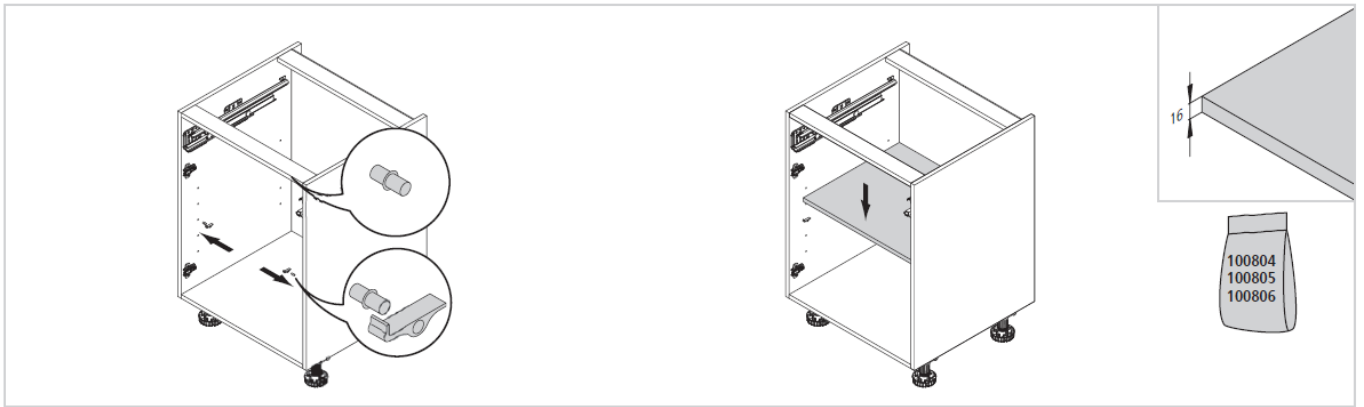
Push to open



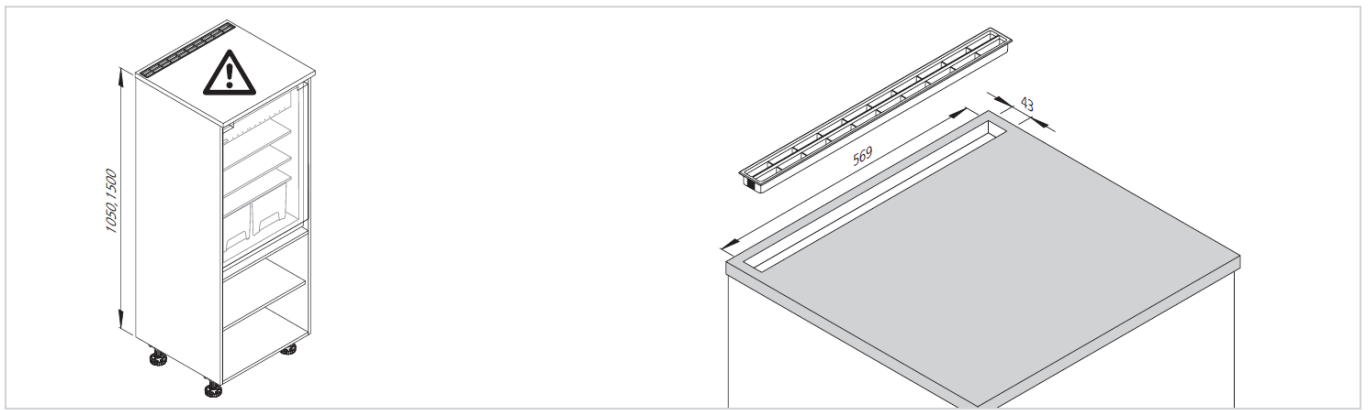
Fixed panel



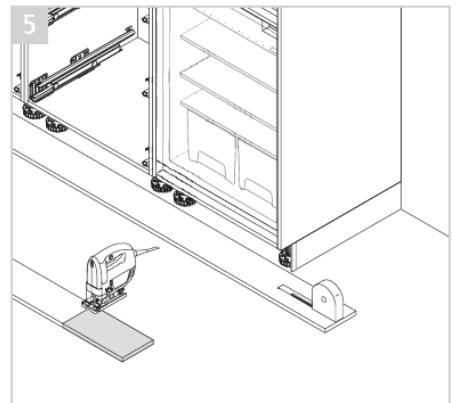
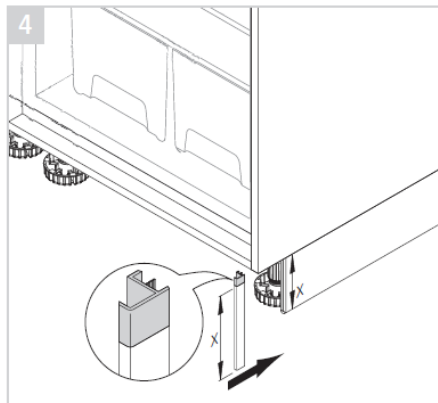
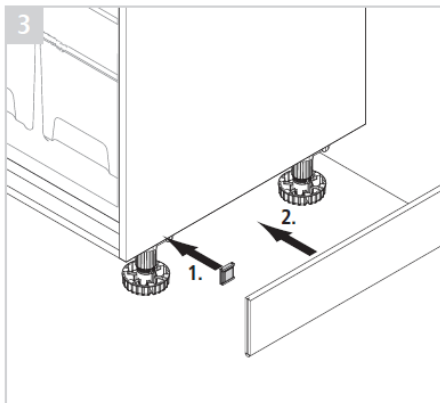
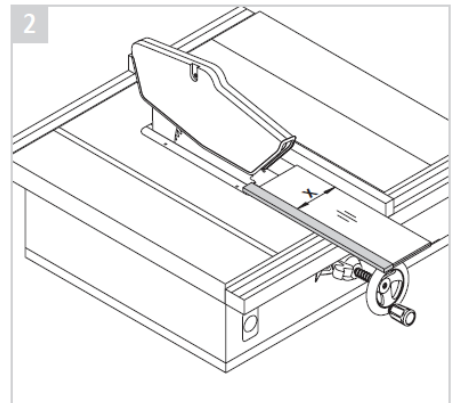
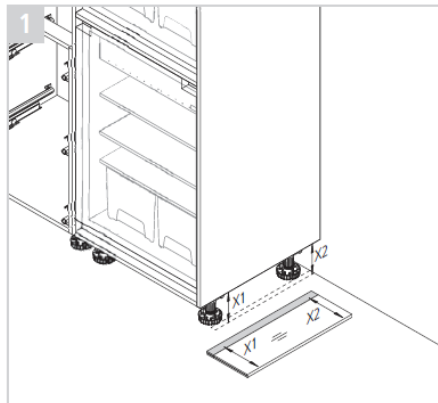
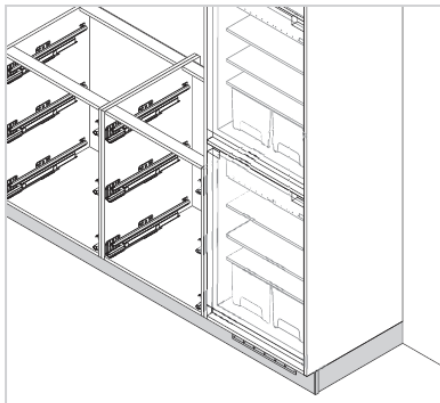
Adjustable Shelves

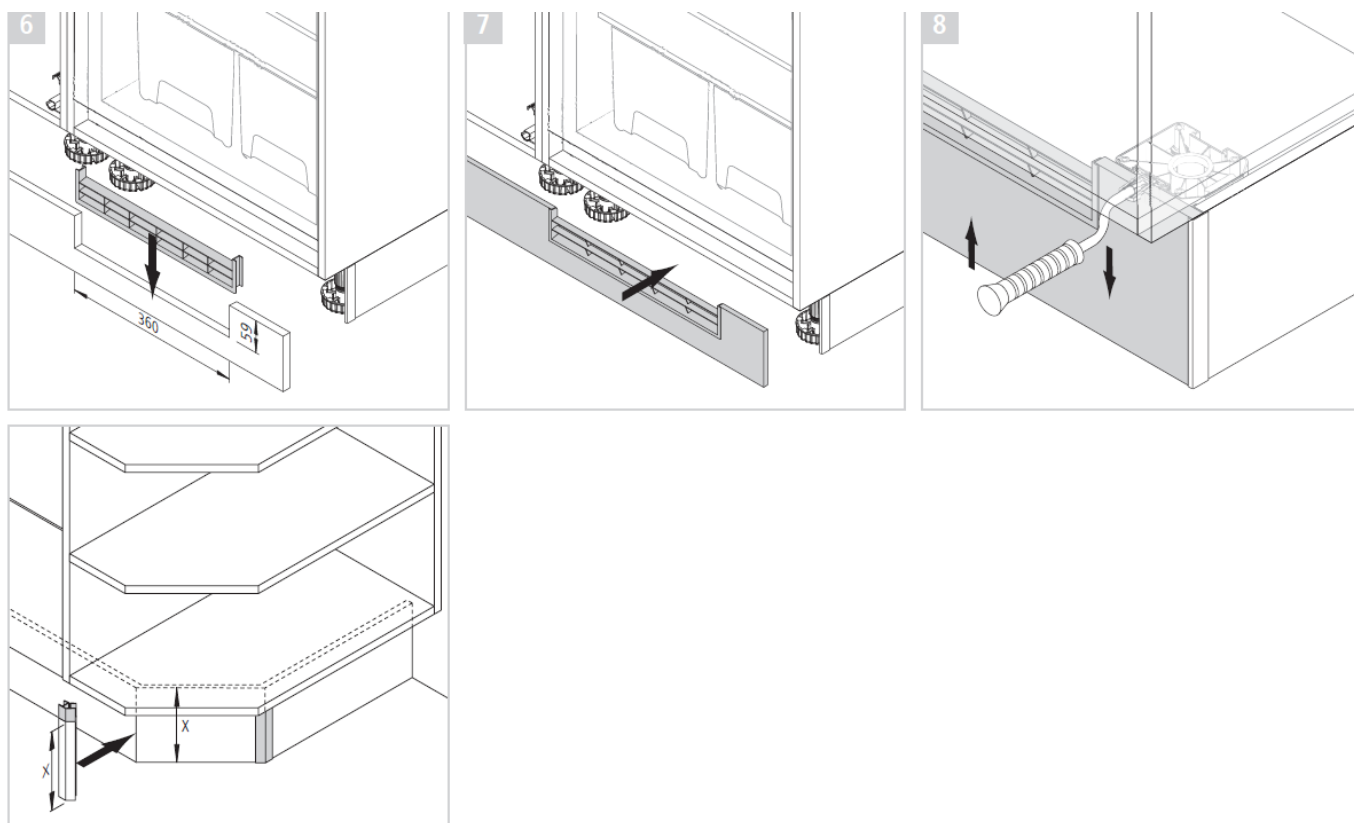


Ventilation grill



Plinth panels





Load-bearing capacities

- **Load:** weight loaded into a system
- **Load-bearing capacity:** load plus own weight of the system, for pull-outs: pull-out plus front plus handle plus load

System	Load-bearing capacity	Load
Drawer	max. 40 kg	depending on width, at least 30 kg
Pull-outs up to 60 cm wide		depending on width and front height, at least 26 kg
Pull-outs up to 100 cm wide	max. 60 kg	depending on width and front height, at least 47 kg
Pull-outs 35 cm deep	max. 40 kg	depending on width and front height, at least 26 kg

System	Load
Base unit with pull-outUAV30	30 kg overall
Pharmacy unit SVAV, HBAV	100 kg overall
Corner base unit EUC, EUAC, EUDC	20 kg per shelf
Corner wall unit EODC	8 kg per shelf
Stile unit UAV15	20 kg overall
Corner base unit EUA semicircular shelf	15 kg per shelf
Adjustable shelf for base and tall unit	50 kg/m ²
Adjustable shelf for wall unit	15 kg
Adjustable glass shelf for wall unit	10 kg

Maintenance Instructions

Below are a few helpful hints on how to care for the kitchen and some operating instructions so that you may enjoy your new kitchen for a long time.

- Always use the extractor hood when cooking.
- Avoid water spilling over the unit tops Standing water on the worktop joint is particularly harmful.
- Only open the dishwasher door approx. 30 minutes after the programme has completed, after the steam has completely condensed.
- Do not place any hot pots or pans directly on the worktop – use a trivet or hotpad.
- Always use a cutting board as a surface to cut food on, not the worktop.
- Do not use your coffee maker, water heater or toaster under wall units. The steam and high temperatures will damage the cupboards over time.
- In general, use only mild and water-soluble household cleaners. No abrasive cleansers or cleaning agents containing solvents should be used. Do not use a steam cleaner on the furniture!
- It's best to use a soft, lint-free cloth or sponge. Even microfibre cloths can cause damage to the surfaces.
- Always dry the furnishings thoroughly after damp-cleaning.
- Always remove any dirt or soiling as soon as possible. Fresh spots are usually much easier to clean and can normally be removed without leaving any trace.
- Avoid leaving the oven / dishwasher door angled open for airing, as the escaping heat and dampness can cause moisture expansion in the surrounding units.
- Please also observe the operating and maintenance instructions, along with the additional information that accompanies the furnishings, accessories and electrical appliances.

Room climate:

The materials used in the kitchen have all been designed for use in a controlled room climate and should ideally be used at a relative humidity of 45%-70% (18-22 degrees). Slight distortion or warping is a sign that the ideal room climate conditions (e.g. not enough or too much heating) have not been observed, and does not constitute a material flaw. This warping, which is typical of wood materials, is determined by the temperature and humidity of

the present environment.

Synthetic Surfaces:

Synthetic finishes on surfaces/fronts can be cared for with common household cleaners. It's best to use a soft cloth, hand warm water and a little washing-up liquid. Do not use any polishing cleaners or hard sponges! Stubborn marks, such as grease splashes, paint or adhesive residues can be removed with common, commercially available synthetic materials cleaners. However, it is recommended that these be tested on an inconspicuous area before using them for the first time!

Gloss Fronts: Never clean these fronts in the dry state!

The use of abrasive cleaning materials (microfibre cloths, scrubbing sponges, etc.) can lead to increased incidence of surface scratching and are not accepted grounds for complaints. Therefore using a dustfree cloth or a damp chamois is best.

Fitted Sink Units and Hobs:

Fitted sink units and all other articles made of stainless steel are best cleaned using a sponge or a fleece cloth with a washing-up liquid or known specialty cleaner (stainless steel cleaner, metal polish). Use mild washing-up or cleaning liquids on fitted sinks made of other materials, such as porcelain, synthetic material, acrylic ceramic as well as stainless steel. In addition, make sure to always follow the specific care instructions provided by the respective manufacturer!

Handles:

Avoid using substances containing solvents or which are harmful to aluminum, as well as cleaners containing vinegar, as these can cause permanent discoloration.

Glass fronts and glass niches

Cleaning satin-finish glass surfaces:

silicon and acid-based cleaning products as well as hard sponges and cleaning polishes must not be used to clean satin-finish glass. Greasy and oily substances leave shadowy marks on satin-finish surfaces. These can, however, be removed with glass cleaner. To remove stubborn marks caused, for example, by hot fat etc., we recommend cleaning the surface with a ceramic-hob cleaner and plenty of water so as not to impair the surface and surface shine (please only use mildly abrasive branded products.)

Cleaning smooth glass surfaces:

neutral cleaning products or standard household glass cleaners are suitable for cleaning smooth glass surfaces. Use soft, clean sponges, leathers and/or cloths. Silicon and acid-based cleaning products as well as hard sponges and cleaning polishes must not be used to clean smooth glass surfaces.

Worktops:

Cleaning: Worktop surfaces should always be cleaned with a damp, soft cloth without any abrasive particles. Detergent or occasionally laundry soap can be added to remove particularly stubborn dirt. Soaking may also be necessary sometimes. If your worktop has a tangible surface texture, it should always be cleaned parallel to the direction of this texture.

Security Instructions for the End Customer

The kitchen is usually the center of the household and therefore frequently the most used room. There can also be many things there that are hazardous to children. Therefore the following safety precautions should be followed:

- Make sure that your children do not use the kitchen as a playground, because improper use of electrical appliances and furniture can be hazardous.
- Take care that children do not crawl into cupboards or pull-outs, as they can close automatically (risk of

jamming).

- Children should not use cupboards or worktops as ladders or perches.
- Do not hang onto the wall units! If undue loads are placed on them, there is a risk of them falling down from the mounting!
- Never leave children unattended while you are cooking.
- Chemicals such as cleaning agents should always be kept out of children's reach!
- Avoiding such risks is the parents' responsibility!

Change in Ownership


Should your kitchen change owners, please give the new owner these assembly instructions. The assembly and safety instructions must be followed if the kitchen requires re-assembling!



We reserve the right to make any changes or modifications that foster progress and make your work easier.

Express Küchen GmbH & Co. KG · Am Mühlenbach 1 · 49328 Melle- Bruchmühlen · Fon +49 5226 59 42 – 0 · info@express-kuechen.de

Documents / Resources

	<p>Express Küchen Jena Pre-Assembled with Soft Close Function Positioning Width 180 Cm [pdf] Instructions Jena Pre-Assembled with Soft Close Function Positioning Width 180 Cm, Jena, Pre-Assembled with Soft Close Function Positioning Width 180 Cm, Function Positioning Width 180 Cm, Positioning Width 180 Cm</p>
---	---