



# expert4house WSD400B WiFi Temperature Humidity Sensor User Manual

[Home](#) » [EXPERT4HOUSE](#) » expert4house WSD400B WiFi Temperature Humidity Sensor User Manual 

## Contents

- [1 expert4house WSD400B WiFi Temperature Humidity Sensor](#)
- [2 Product parameter](#)
- [3 Appearance introduction](#)
- [4 Instructions](#)
- [5 Function Description](#)
- [6 Documents / Resources](#)
  - [6.1 References](#)
- [7 Related Posts](#)

## Expert4house

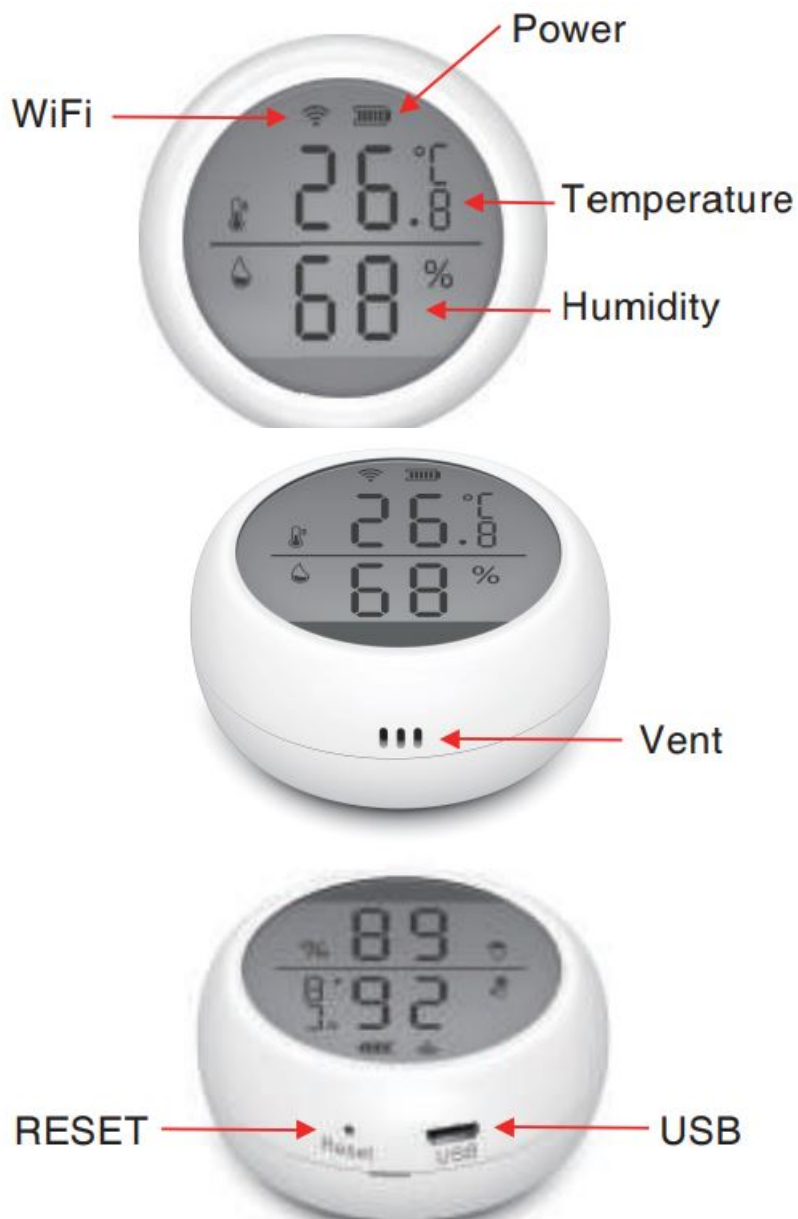
expert4house WSD400B WiFi Temperature Humidity Sensor



**Product parameter**

- USB input: DC5V/2A (USB power and dry batteries can not be used in the same time) Input voltage: DC3V LR03\*2
  - Quiescent current:  $\leq 75\mu\text{A}$
  - Alarm current:  $\leq 60\text{mA}$
  - Low voltage and undervoltage:  $\leq 2.2\text{V}$  WiFi: 802.11b/g/n
  - Detection temperature:  $-10^{\circ}\text{C}$ - $55^{\circ}\text{C}$  Detection humidity: 0-99%RH
  - Alarm sound pressure: 55dB
  - Installation method: wall-mounted Working temperature:  $-10^{\circ}\text{C}$ - $60^{\circ}\text{C}$  Working humidity: maximum 90%RH
- Notice**
- USB power can not be used with dry batteries but can work with ordinary batteries in the same time.
  - Do not use it in an environment with humidity exceeding 90% for a long time.

## Appearance introduction



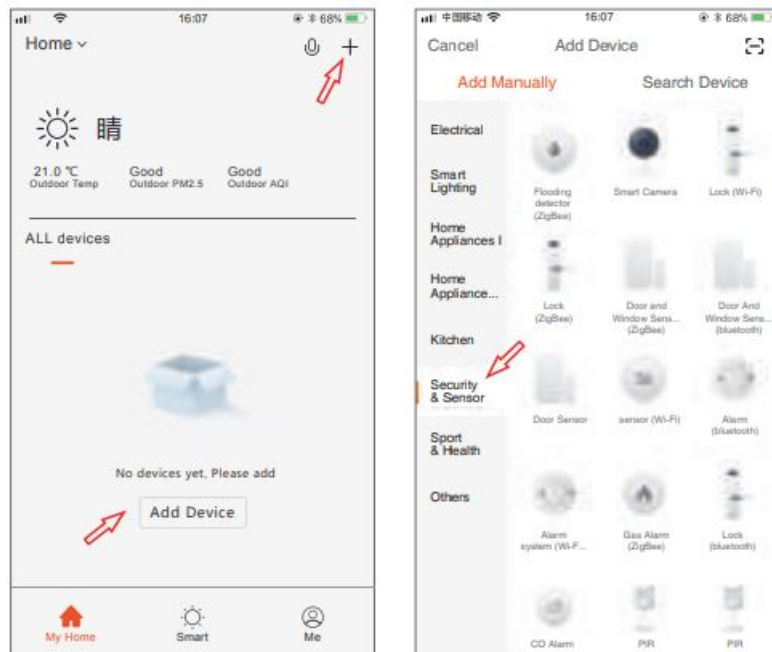
## Instructions

1. Download Tuya Smart APP in major application stores, or scan the QR code below.

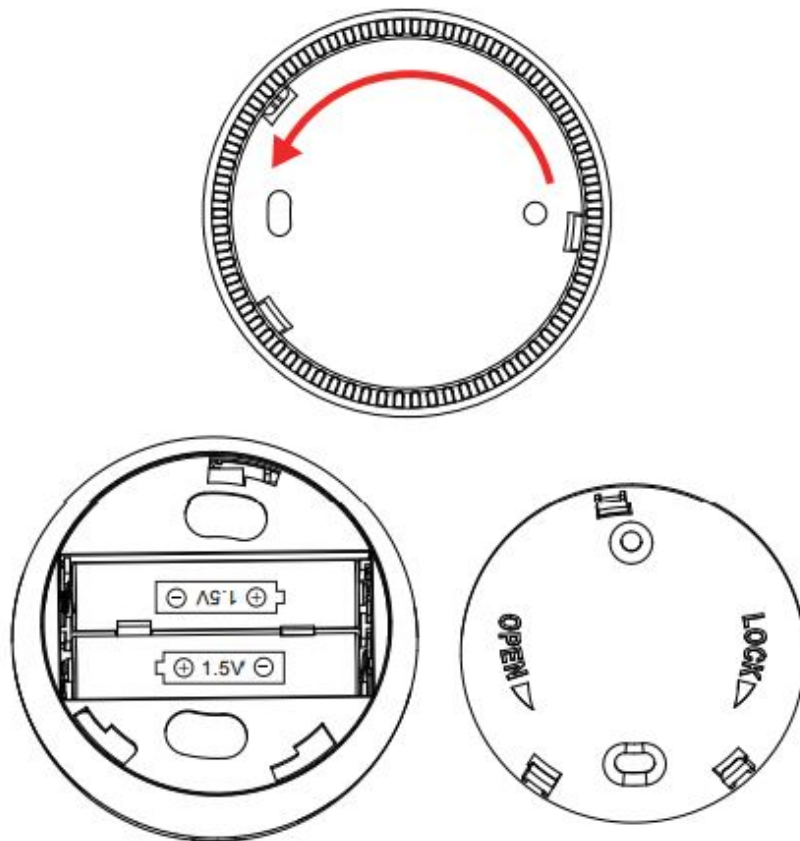


iOS/Android

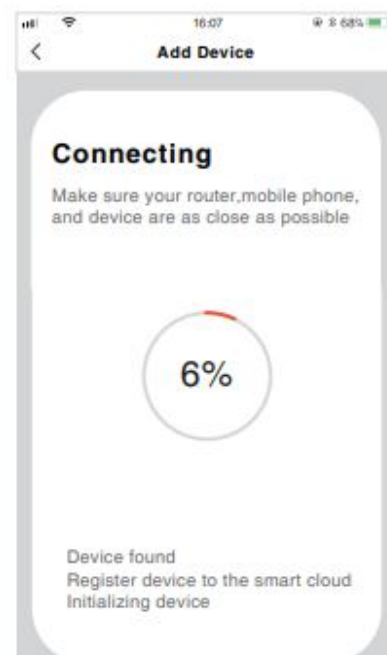
2. Register the APP with your cellphone number. Then click “+” on “My Home” or click on the blank to “Add Device”, select security sensor, and click sensors.



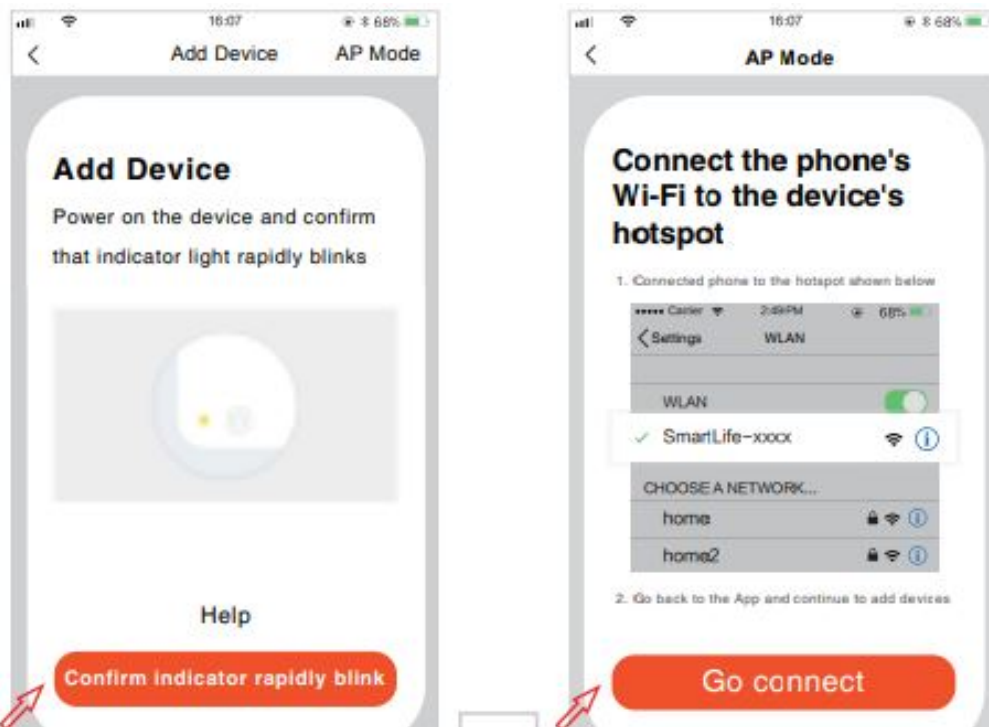
3. Install batteries. Turn counterclockwise to remove the mounting bracket and install the batteries correctly.



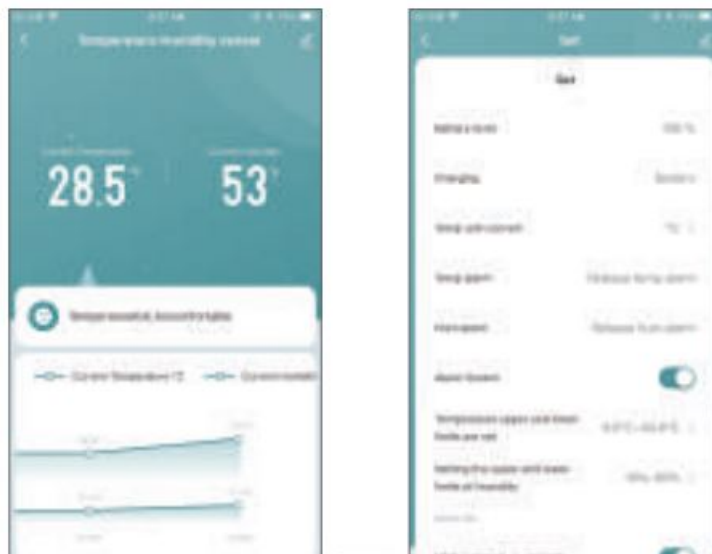
4. Use the Pin to press the reset button for more than 5 seconds until the WiFi icon on the display screen flashes quickly to enter the automatic network configuration, enter "WiFi password" according to the prompt, and clicks OK. The sensor will be added successfully then.



5. Under the automatic network configuration mode, press and hold the reset button with the Pin for 5 seconds to slow down flash of the indicator light as entering the manual network configuration mode. Choose the compatibility mode of APP and enter "WiFi password" according to the prompt and connect to network "Smart\_XXXX" to add device.



6. After pairing successfully, click the temperature and humidity sensor icon to enter the interface, you can view the current temperature and humidity, and set the upper and lower limits. It's better to stand the sensor for a period of time for a more accurate detection.



7. Restore factory settings

After removing sensors and clearing the data, you must short press the reset button to wake up/re-power the product (low power consumption product).

## Function Description

- Temperature scale switch: switch between  $^{\circ}\text{C}$  and  $^{\circ}\text{F}$  according to different countries.
  - The upper and lower temperature limits can be set from  $-39.9^{\circ}\text{C}$ - $80^{\circ}\text{C}$
  - The upper and lower limits of humidity can be set from 0-100%RH
  - The alarm switch is used to turn off or turn on the alarm sound.
2. Temperature record
- Upload temperature record every 12 hours, the detailed record can be checked on the APP or emailed.
3. OTA upgrade
1. Upgrade when APP gets the notification "New firmware device found". Open the key "Automatically keep


device up-to-date" and then click update in APP, press the reset button to wake up the device until upgrade successfully in about 30 seconds .

2. If the upgrade fails, press and hold the reset button until you hear a beep. The device will automatically upgrade successfully showing the current temperature and humidity.

#### Notice:

Frequent activation of WiFi will cause the rise of internal temperature of the product. It's set that if the temperature and humidity change frequently, APP will upload the temperature and humidity value or alarm information every 30 seconds.

#### Documents / Resources

	<a href="#">expert4house WSD400B WiFi Temperature Humidity Sensor</a> [pdf] User Manual WSD400B, WiFi Temperature Humidity Sensor, WSD400B WiFi Temperature Humidity Sensor
---	--

#### References

[Manuals+.](#)