

**Expert4house Smart Wi-Fi  
Zigbee Socket**



## Expert4house Smart Wi-Fi Zigbee Socket User Manual

[Home](#) » [EXPERT4HOUSE](#) » Expert4house Smart Wi-Fi Zigbee Socket User Manual 

### Contents

- [1 Expert4house Smart Wi-Fi Zigbee Socket](#)
- [2 Product Information](#)
- [3 Product Usage Instructions](#)
- [4 DESCRIPTION](#)
- [5 Operation Steps](#)
- [6 Documents / Resources](#)
  - [6.1 References](#)
- [7 Related Posts](#)



**Expert4house Smart Wi-Fi Zigbee Socket**



## Product Information

### Specifications:

- **Product:** Smart Wifi/Zigbee Socket
- **Country of Origin:** Made in China
- **Compatibility:** Android and iOS phones
- **Wire Compatibility:** Copper or copper-clad wire
- **Not Compatible with:** Aluminum wire

## Product Usage Instructions

### Installation:

Before starting the installation process, ensure power is turned OFF at the service panel. Use only copper or copper-clad wire for installation. Follow National and Local electrical codes during installation. Avoid routing cables near outlet openings. Do not hang devices by charging cords.

### Connecting to Wifi:

Follow these steps to connect the outlet to your wifi network:

1. Install the outlet.
2. Scan the QR code or download SmartLifeApp on your Android or iOS phone.
3. Register with your phone number or email.
4. Press any button on the touch panel for 5 seconds; the indicator light will blink quickly to pair with the network.
5. Follow the app instructions to complete the connection process.

## Controlling with Google Home:

To control the switch with Google Home, follow these steps:

1. Download the Google Home App and register with a US account.
2. Name the switch with a simple and recognizable name.
3. Open the Google Home App, tap Home Control, Tap + on the bottom right corner, and find SmartLife from the sidebar list.
4. Enter your SmartLife App account, tap Link now – Authorize to bind the Smart Life account to Google Home.

## FAQs

Can this device be used with aluminum wire?

No, this device is only compatible with copper or copper-clad wire. Do not use with aluminum wire to prevent safety hazards.

What should I do if the indicator light does not blink during pairing?

If the indicator light does not blink during pairing, ensure that you are pressing any button on the touch panel for a full 5 seconds. If issues persist, contact customer support for assistance.

Can I hang devices by their charging cords on this outlet?

No, outlets are not intended to support devices or appliances by their charging cords. Avoid hanging devices to prevent damage to both the device and the outlet.

Why failed to add device?

1. Please check whether device is powered on; 2. Whether phone is connected via Wi-Fi; 3. Whether device is ready for configuration. To get the device ready before configuration, normally you can manually press on the device to get it ready. Please refer to "Product Instructions" or Device Reset Instructions for details. Notice each time to add device, reset Wi-Fi to get device ready for configuration and make sure router is working properly. 4. Check routers or related: If router is dual-band router, select 2.4G network and add device. You also need to enable router's broadcasting function. Set up wireless router: Set encryption method as WPA2-PSK and authorization type as AES, or set both as auto. Wireless mode can not be 11n only. Don't use Chinese to name router Wi-Fi. To stay strong Wi-Fi signal, please keep device and router within certain distance. Whether connected devices have reached the maximum number of router's connections. If so, please try by turning off the Wi-Fi connection of some device. Router's wireless MAC filtering function is enabled. Remove the device from the filter list and make sure that router is not prohibiting device from connection. 5. Make sure the password entered in App is correct when adding new device.

**WARNING:** IMPROPER WIRING OF ANY ELECTRICAL DEVICE CAN CAUSE SERIOUS INJURY OR DEATH. THESE WIRING DEVICES SHOULD BE INSTALLED BY AN ELECTRICIAN OR OTHER QUALIFIED PERSON.

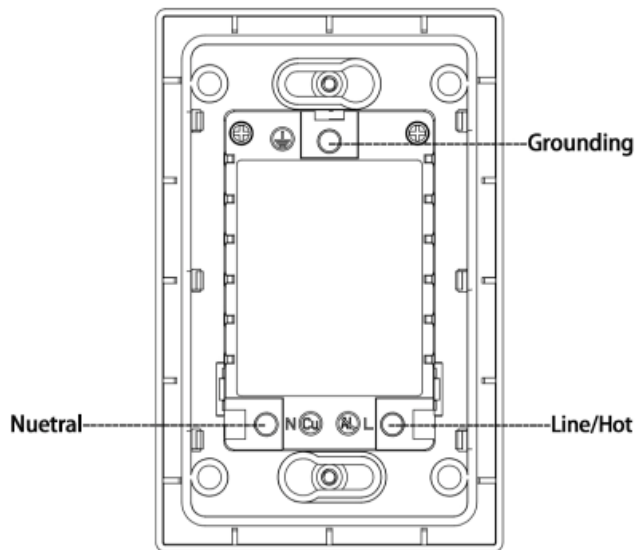
## DESCRIPTION

USB ports are for charging purpose only and are not intended for data transfer. And the WiFi button only can control one plug.

## CAUTION

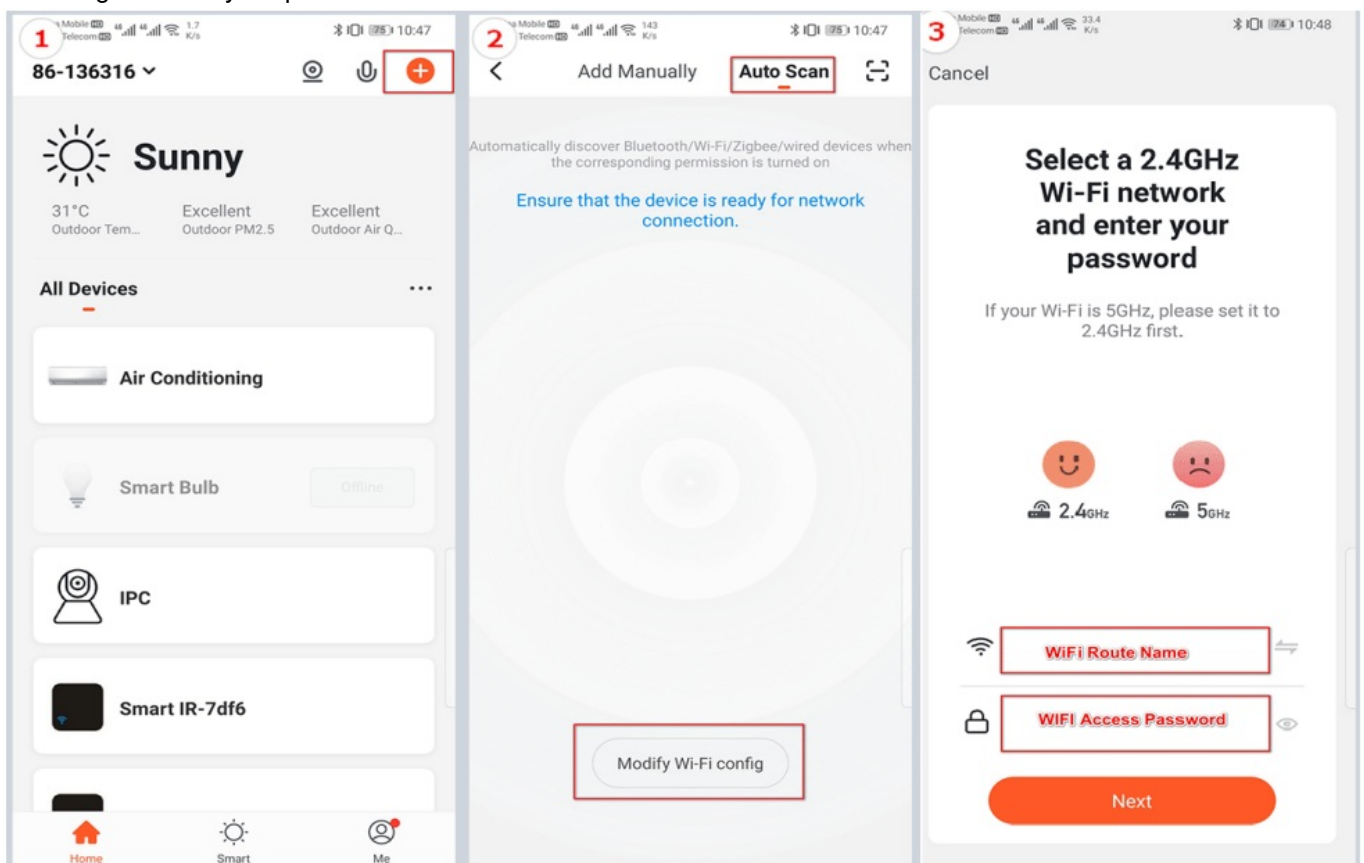
- To prevent severe shock or electrocution, always turn power OFF at the service panel before working with wiring.
- Use this device with copper or copper-clad wire. Do not use with aluminum wire.
- Must be installed in accordance with National and Local electrical codes.
- All cables should be routed away from the outlet openings.
- Outlets are not intended to support devices or appliances. Do not hang devices by charging cord.

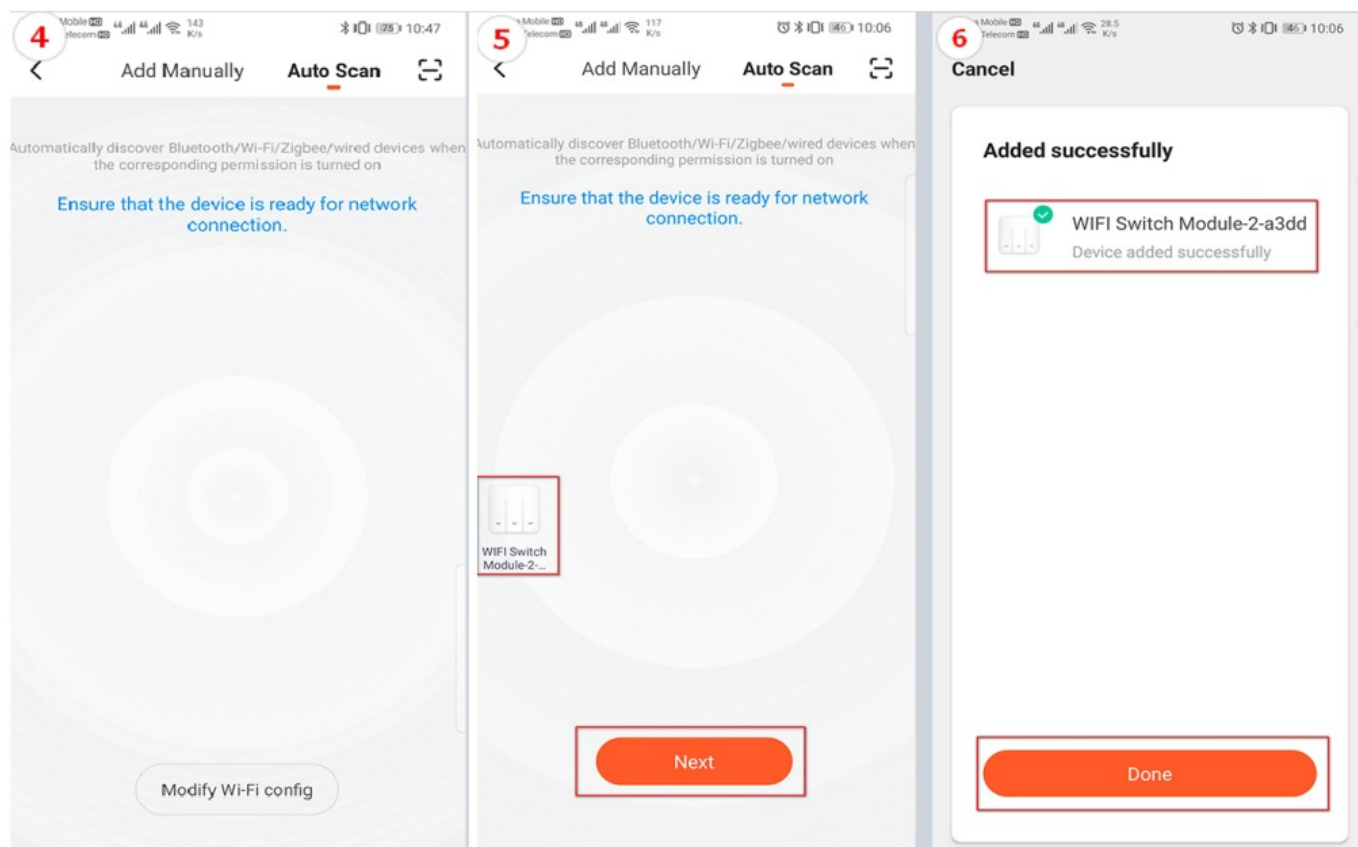
## Operation Steps



**Install the outlet firstly**

Scan the QR code or download the “SmartLife” APP to your Android or iOS phones.  
Then register with your phone No. or email.





Press any of the button on the touch panel for 5 sec,the indicator light blink quickly to pairing network. Follow the app instructions to connect the outlet to your wifi network.

### How to control the switch with Google Home?

1. Download the Google Home App and register with US account
2. Name the switch with simple and easily recognizable name.
3. Open your Google Home App,tap"Home Control",Tap"+" on the bottom right corner, and find the"smartLife" from the side bar list.
4. Enter your account of"Smartlife" App, tap"Link now"- "Authorize" on the next page to bind Smart Life account to Google Home.

### Documents / Resources

	<p><a href="#">Expert4house Smart Wi-Fi Zigbee Socket</a> [pdf] User Manual Smart Wi-Fi Zigbee Socket, Wi-Fi Zigbee Socket, Zigbee Socket, Socket</p>
---	---

### References

- [User Manual](#)

