



expert4house HW400B Wi-Fi PIR Motion Sensor User Guide

[Home](#) » [EXPERT4HOUSE](#) » expert4house HW400B Wi-Fi PIR Motion Sensor User Guide 

Contents

- [1 expert4house HW400B Wi-Fi PIR Motion Sensor](#)
- [2 Parameters](#)
- [3 There are two methods to connect network](#)
- [4 Documents / Resources](#)
- [5 Related Posts](#)



expert4house HW400B Wi-Fi PIR Motion Sensor



*Please read this manual carefully before use and keep it for future reference

Parameters

- USB input voltage: DC5V/ 2A USB cannot be used with dry battery, only rechargeable battery
- Battery DC3V LR03*2
- Standby current $\leq 75\mu\text{A}$
- Alarming current $\leq 60\text{mA}$
- Low-voltage notification $\leq 2.2\text{V}$
- WiFi 802.11b/g/n
- Detection distance 6M
- Detection angle 360°ceiling –installation Installation method ceiling /wall
- Working temperature $-10\text{--}50^{\circ}\text{C}$
- Working humidity $\leq 95\%\text{RH}$

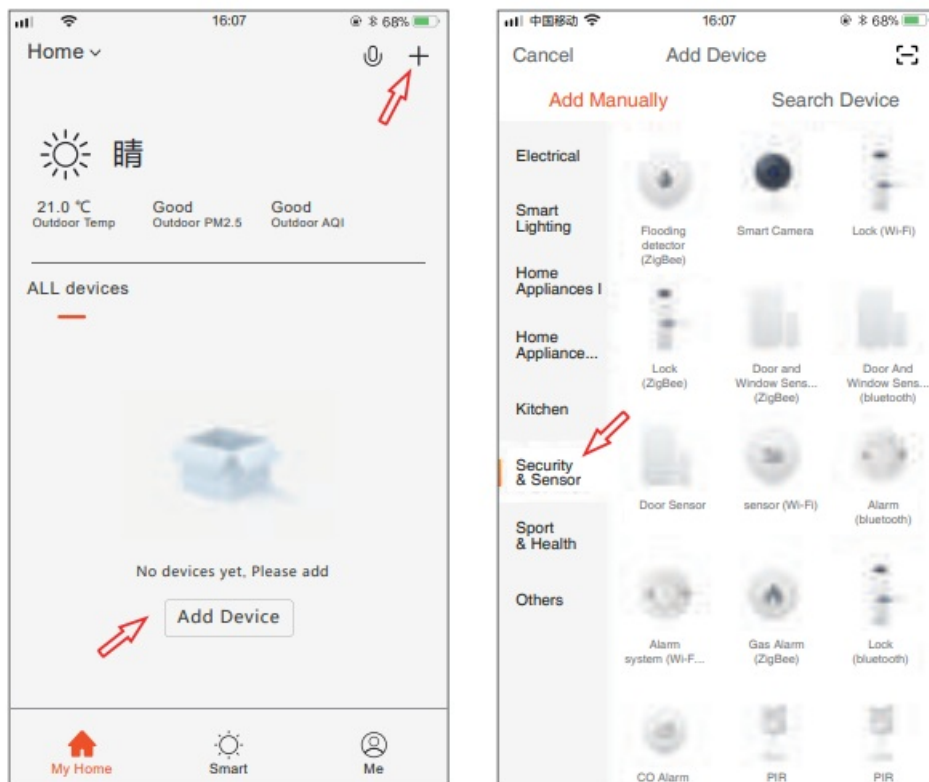
Download “Tuyasmart” by iOS or Google play store, or scan below QR code to download.



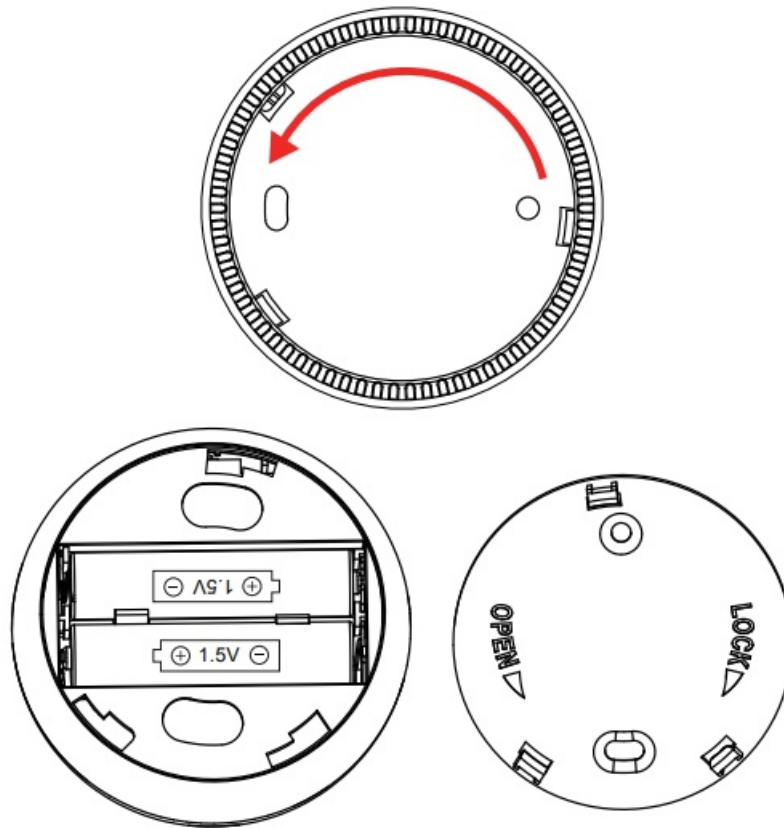
iOS/Android

Registering a Tuya account and log-in it.

Click “+” on the top of right corner at home page, choose “Security&Sensors” then find “Sensor(Wi-Fi)” to add device.



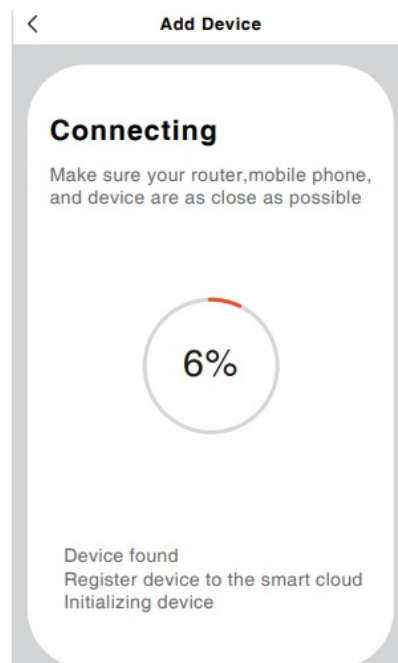
Counter clock wise to open back cover and insert batteries.



There are two methods to connect network

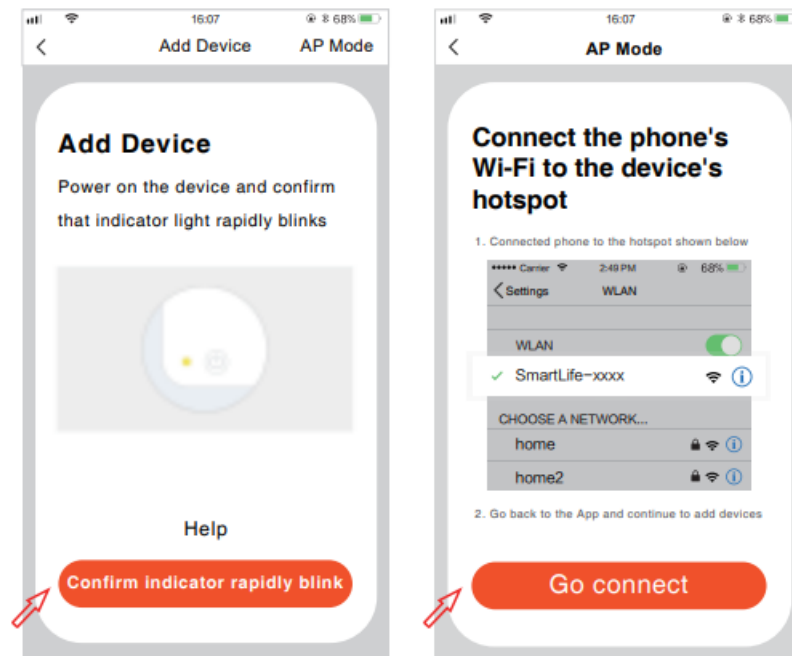
EZ Mode (Default mode).

Press the “RESET” for more than 5 seconds by a pin. when indicator flashes quickly, then choice Wifi(2.4GHz) and input password to connect network by APP. 16:07



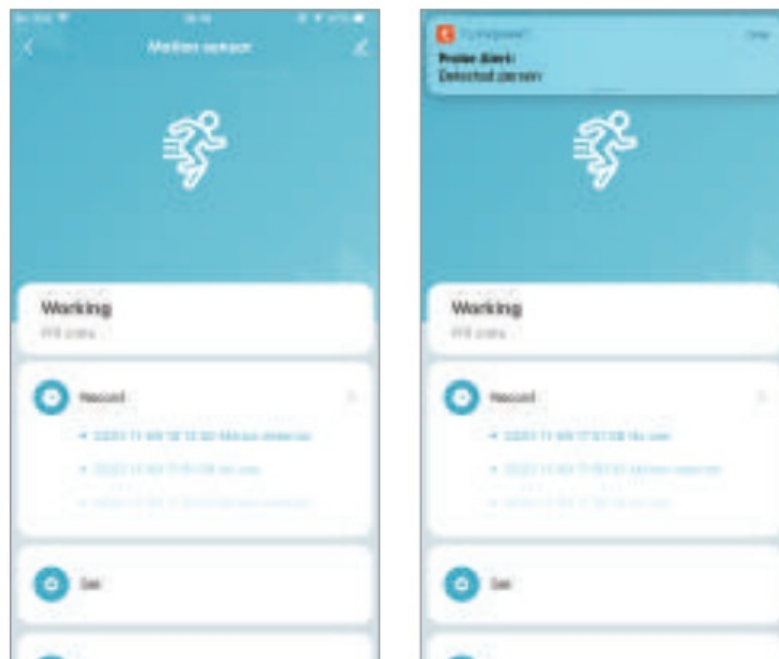
AP Mode

Press the “RESET” for more than 5 seconds by a pin. when indicator flashes quickly, press 5 seconds again, when indicator flashes slowly, then choice Wifi(2.4GHz) and input password, and choice “AP Mode” on the top of right corner, click “Next” into wifi list page to choose “Smartlife_XXXX” to connect network.




After connecting the network, please testing it and mind the following points.

- ※ Please go away from the device for more 30 seconds, after that, move the body near device to test, indicator light on, and received message by App means testing successful.
- ※ If someone always moves in the detection area of PIR sensor, it will detect one times only.



Documents / Resources

	expert4house HW400B Wi-Fi PIR Motion Sensor [pdf] User Guide HW400B Wi-Fi PIR Motion Sensor, HW400B, Wi-Fi PIR Motion Sensor
---	---