



expert4house CT-W-Z WiFi ZigBee Dual Channel Smart Meter Instruction Manual

[Home](#) » [EXPERT4HOUSE](#) » expert4house CT-W-Z WiFi ZigBee Dual Channel Smart Meter Instruction Manual 



WiFi/ZigBee Dual Channel Smart Meter
1/2 channel



Contents

- 1 Technical Data
- 2 Download the App
- 3 Add the WiFi Meter
- 4 Add the ZigBee Meter
- 5 Wiring Diagram
- 6 Q&A
- 7 Documents / Resources
 - 7.1 References
- 8 Related Posts

Technical Data

Input: AC 100-240V 50/60Hz
Measuring Range: 0.2-80A
Wireless Frequency: 2.4GHz
Accuracy: Within $\pm 2\%$
Module Size: 50*45*23mm
Clamp Diameter: 10mm
Clamp Cable Length: 0.7m
Working Temperature: -10 °C ~ +55 °C

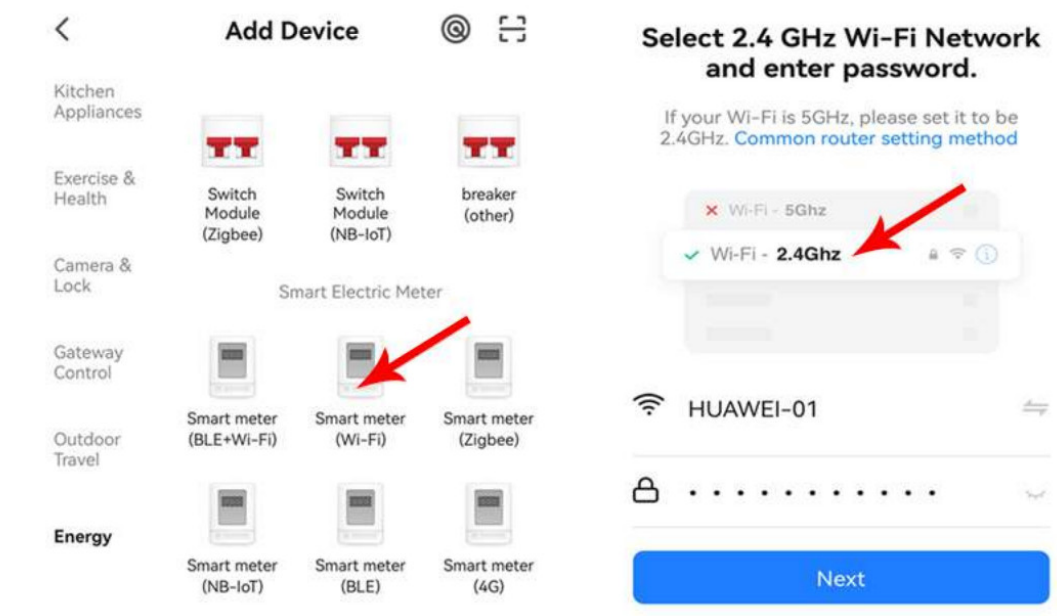
Download the App

Please scan the QR code, or get 'Smart Life' or 'Tuya Smart' from App Store, Google Play, or Android Market.

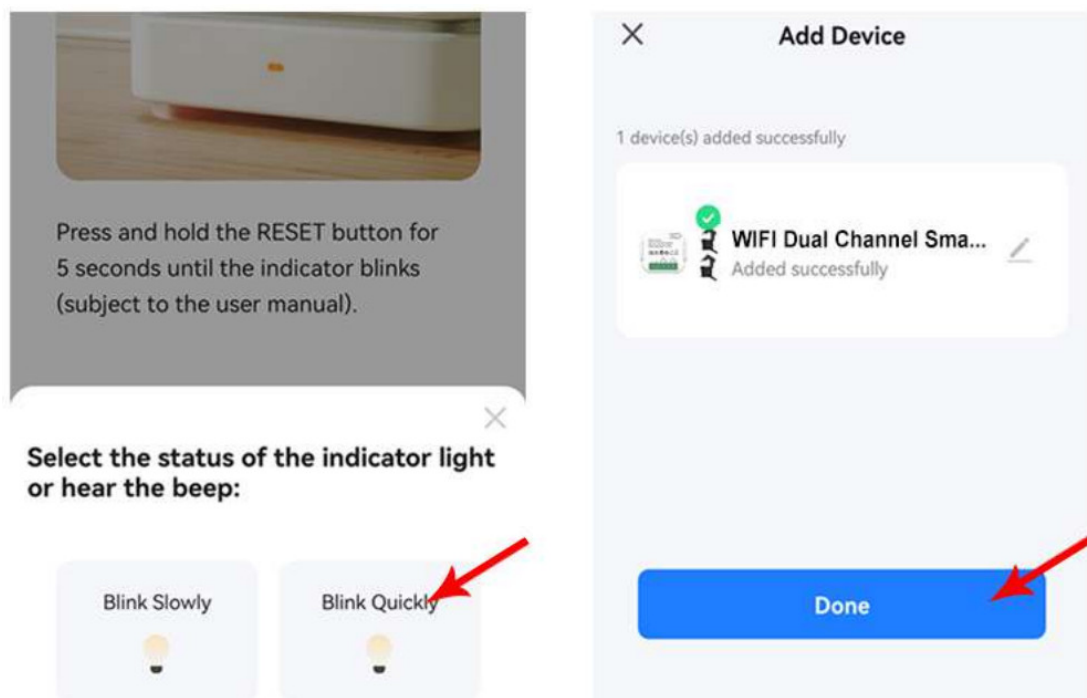


Add the WiFi Meter

Press the reset button for about 5s until the red light flashed quickly, then you can add it on the App.

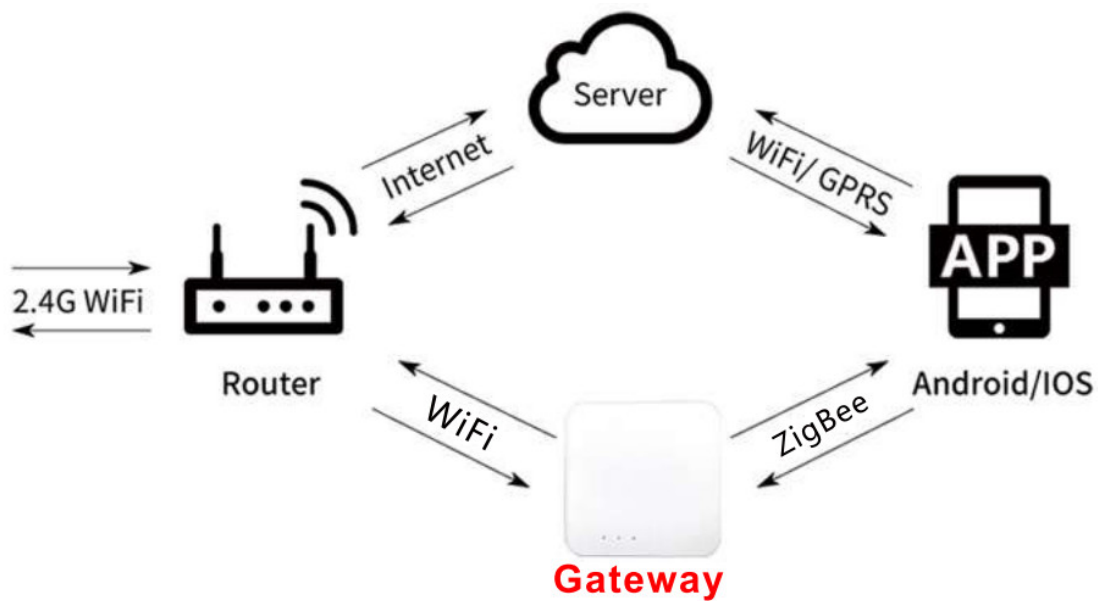


Click 'Done' and then you can monitor electricity usage.

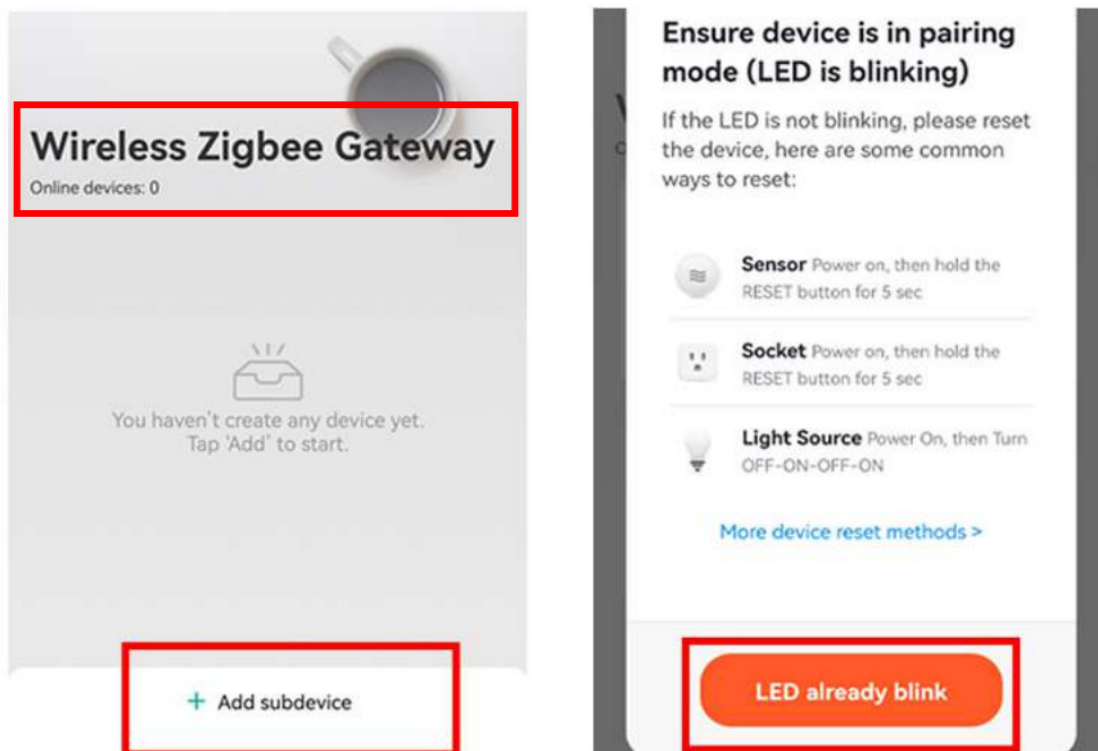


Add the ZigBee Meter

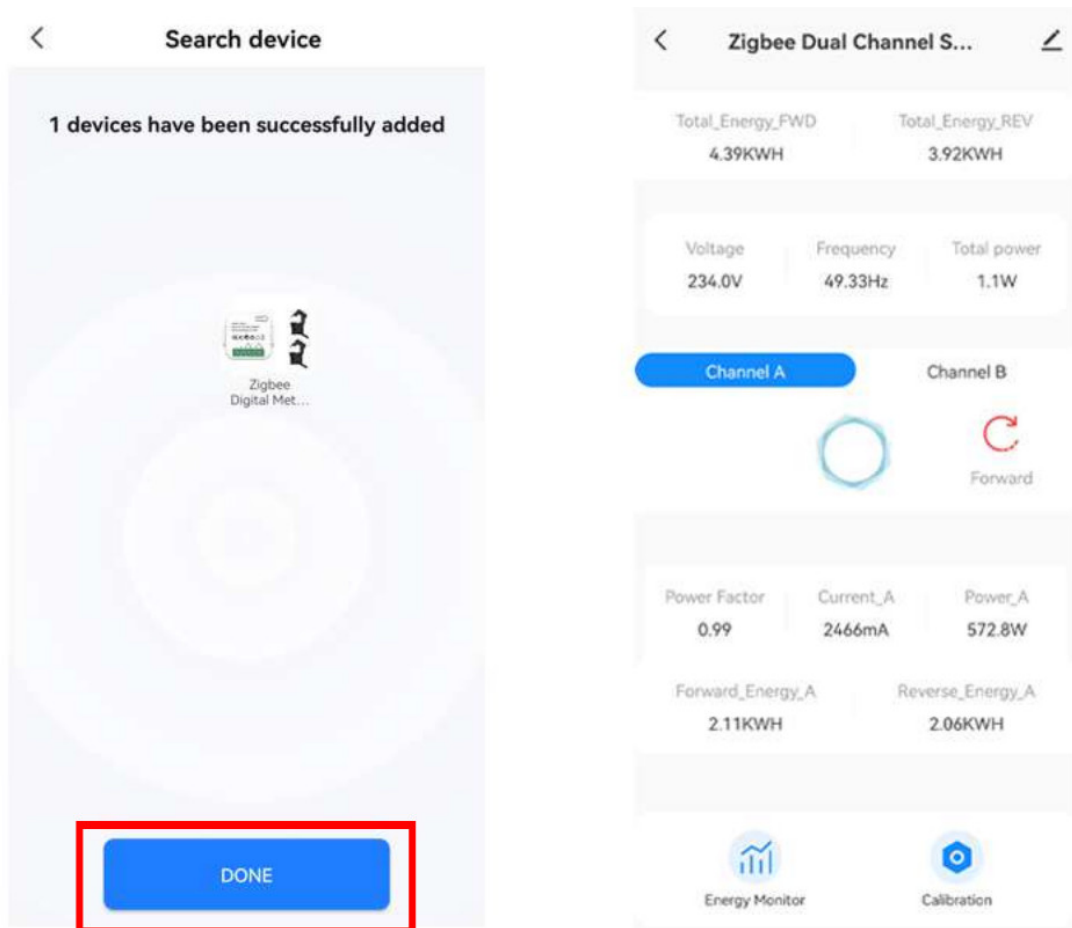
Please note: ZigBee meters need to be connected to a ZigBee Gateway to function properly.



Press the reset button for about 5s until the red light flashed quickly, then you can add it on the App.

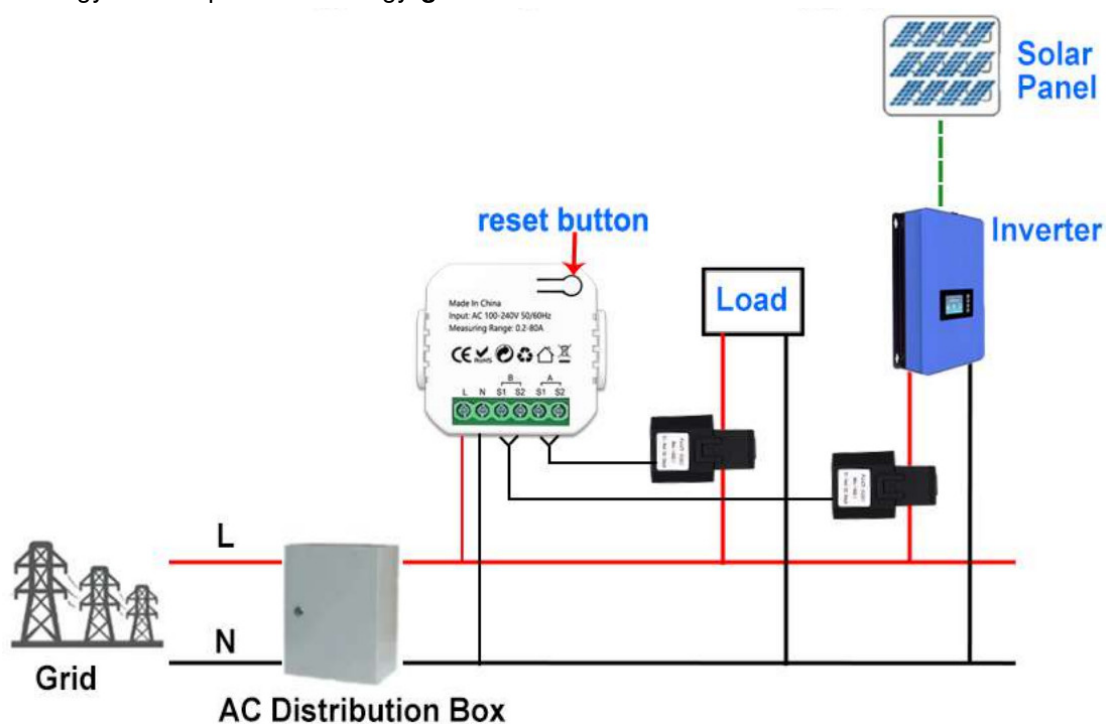


Click 'DONE' and then you can monitor electricity usage.



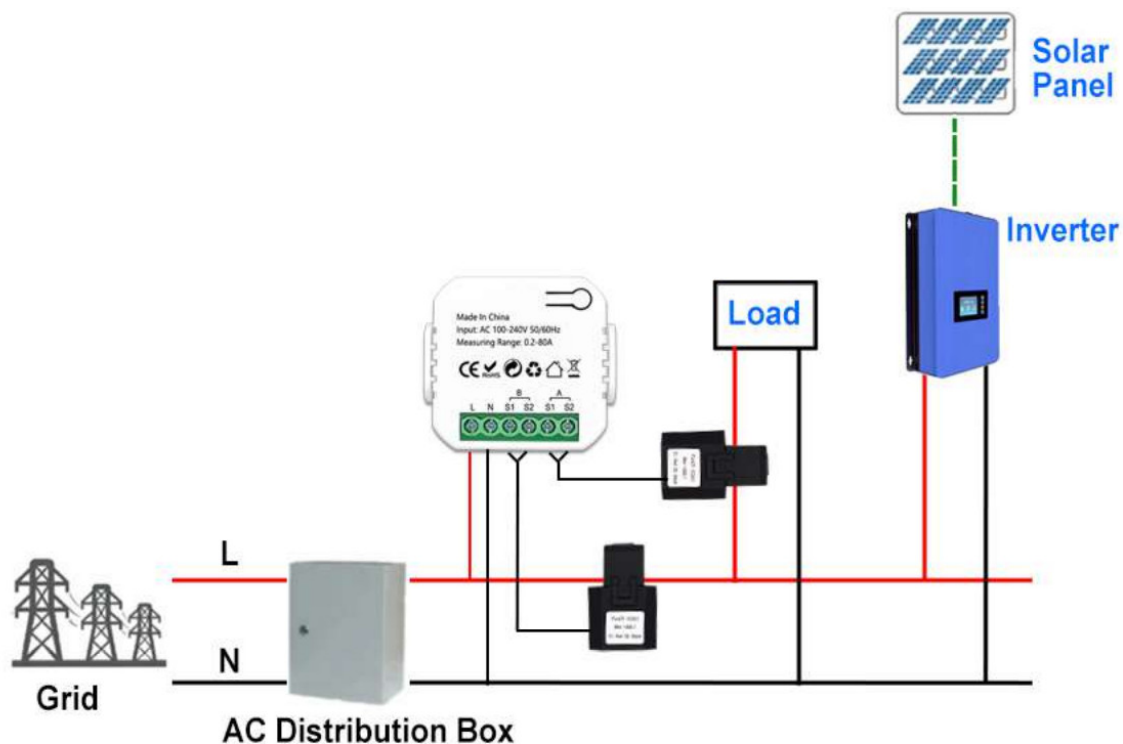
Wiring Diagram

To measure energy consumption and energy **generation**



Note: When installing, please ensure that the circuit measured by CT is in the same phase as the circuit powered by the module.

To measure 'from Grid' or 'to Grid'

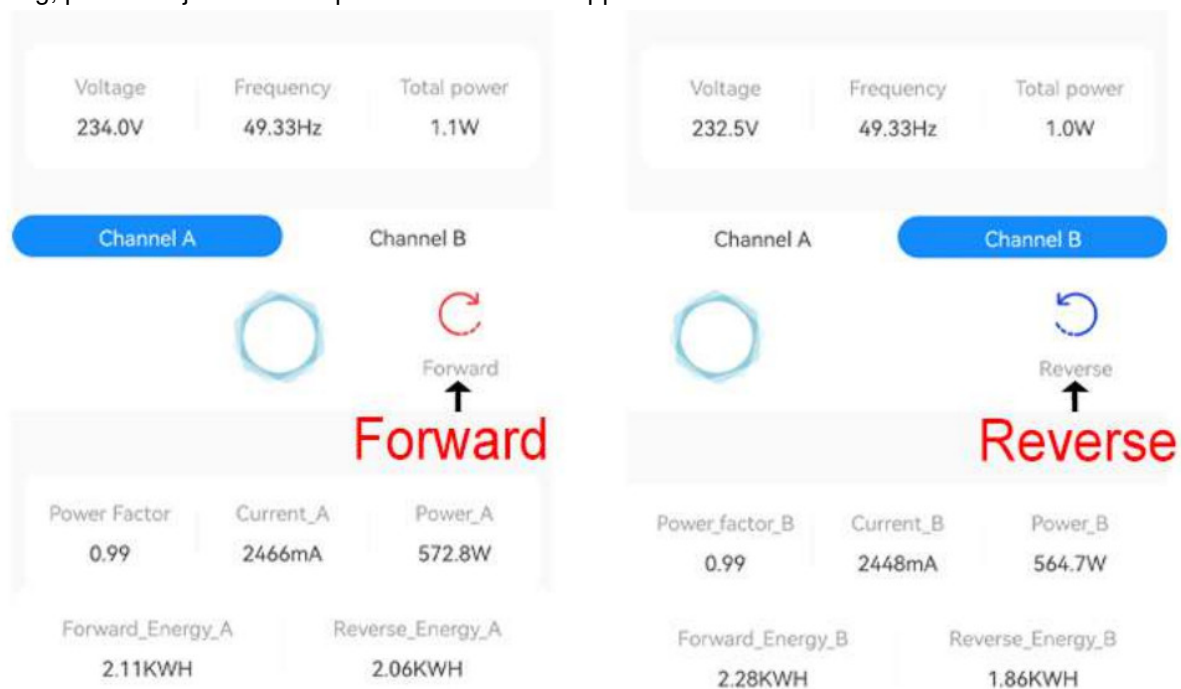


AC Distribution Box

Note: When installing, please ensure that the circuit measured by CT is in the same phase as the circuit powered by the module.

Please make sure the clamp be put on the correct direction.

If your solar is working, please adjust the clamp's direction, until you see the App shows 'Reverse'. If your solar is not working, please adjust the clamp's direction to see App shows 'Forward'. Please do that for each **channel**.



WARNING!!! FOR SAFETY. If you need remove the current transformer clamp, please be sure to turn off the power of the measuring device first, otherwise there is a risk of electric shock.

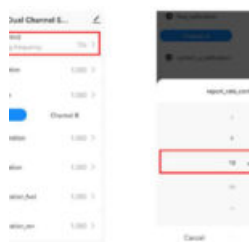
Q&A

Q: After I configure it with App , why App shows 'the Current and Power as '0' ' ?



A: Only if you put a device's wire (either live wire or neutral wire, not both) in the clamp, and turn on the device, then the clamp can sense the current, and the App displays current and power values.

Q: After I change the report rate to less than 10 Seconds, why my App seems stuck?




A: That's because the network return is too slow, please sign out App and re-enter to change the rate back to 10 seconds, then it will be ok.

Q: How to clear App electricity data ?



1. Please press the reset button 5 times quickly, the indicate led will blink quickly, if it fails to blink, please repeat the action to press the button 5 times again, until you see the led blink quickly. 2. After 10 seconds, please go to App page to click 'Disconnect and wipe data' . A:



	<p>expert4house CT-W-Z WiFi ZigBee Dual Channel Smart Meter [pdf] Instruction Manual CT-W-Z, CT-W-Z WiFi ZigBee Dual Channel Smart Meter, WiFi ZigBee Dual Channel Smart Meter, ZigBee Dual Channel Smart Meter, Dual Channel Smart Meter, Channel Smart Meter, Smart Meter, Meter</p>
---	--

References

- [User Manual](#)