



# EXO VISUAL ezPoster All-in-One LED Display User Guide

[Home](#) » [EXO VISUAL](#) » EXO VISUAL ezPoster All-in-One LED Display User Guide 



## ezPoster Quick Start Guide

### Contents

- [1 Setting up](#)
- [2 Connecting to the ezPoster](#)
- [:](#)
- [3 3, Control of the exposure.](#)
- [4 Support :](#)
- [5 Documents / Resources](#)
  - [5.1 References](#)
- [6 Related Posts](#)

## Setting up

- 1.1. Free Standing: Place the device on a flat floor, fully Pull out the kickstand



## 1.2. Set up with an upright base stand

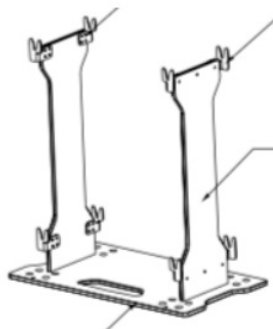
1.2.1, Set up the upright standing base. Bolt 3 screws on each side of the base plate from the bottom. Be aware of different positions of screws for single or double-sided installations. Screws (and/or screwdriver) provided.

1.2.2, Assemble the toolless billets onto the ezPoster if the billets are not pre-installed.

1.2.3, Set the LED display(monitor) on the stand so it sits in top and bottom billets. (Better to have 2 people handle it even though one person is doable).



*Single-side installation position*



*Double-side installation position*

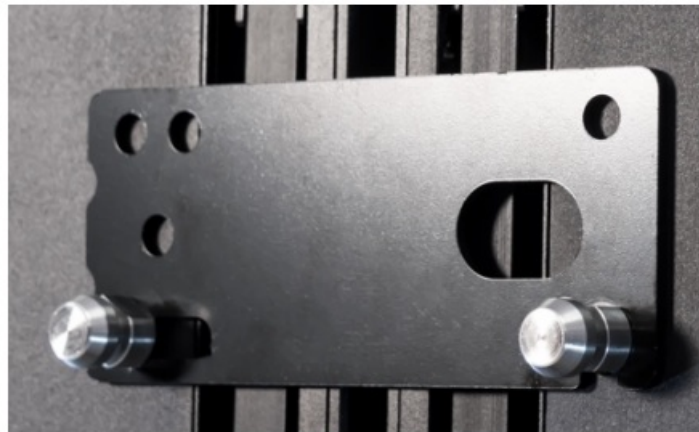
## 1.3 Set up with wall bracket

Secure the wall bracket on the wall

Secure the billets on the LED screen Hang the LED screen onto the wall bracket



1.4 Connection plate: use a connection plate horizontally between the exporters to form a larger screen when needed.



1.5 Power on the ezPoster: After setting up the device, plug the power cable, and switch on the power button, power indicator light will turn on once power is on.



## Connecting to the ezPoster :

Use one of the below methods to connect to the exposure

### 2.1 Connect with USB cable

Use the included USB Type A to Type B cable to connect the computer to the LED display, the device will show up in the software's device list.



This method will always work, use this method if you forget the WiFi password or cannot connect to the exposure with other methods.

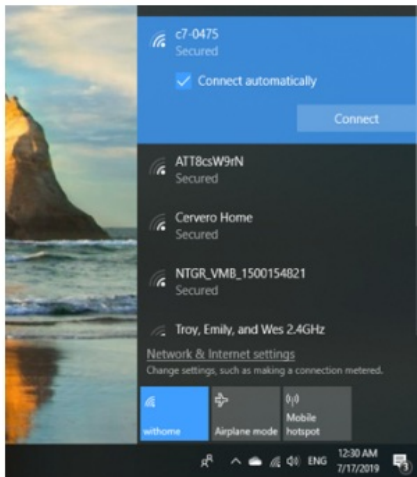
### 2.2 Connect through the Built-in WiFi Access Point

The EXO ezPoster has built-in WiFi and it's turned on by default. In this mode, the ezPoster works as a Wireless routers, computers or smartphones can be connected to it through this WiFi.

The default WiFi SSID is the device's serial number, and the default password is 123456789. They can be changed in the Windows software.

**Note:** The WiFi Access Point maybe not be visible if the network mode is not set to WiFi Hotspot mode. To change it, use the USB cable method to connect to the device and change the network setting in the Windows/Mac software (See software instruction Network setting section)

### Connecting to WiFi AP on Windows



### Connecting to WiFi AP on iOS



## 2.3 Connect through WiFi Router

See the network setting section

When multiple exporters are connected to the same router, all the exporters will show up in the software's device list.

## 2.4 Connect through Ethernet

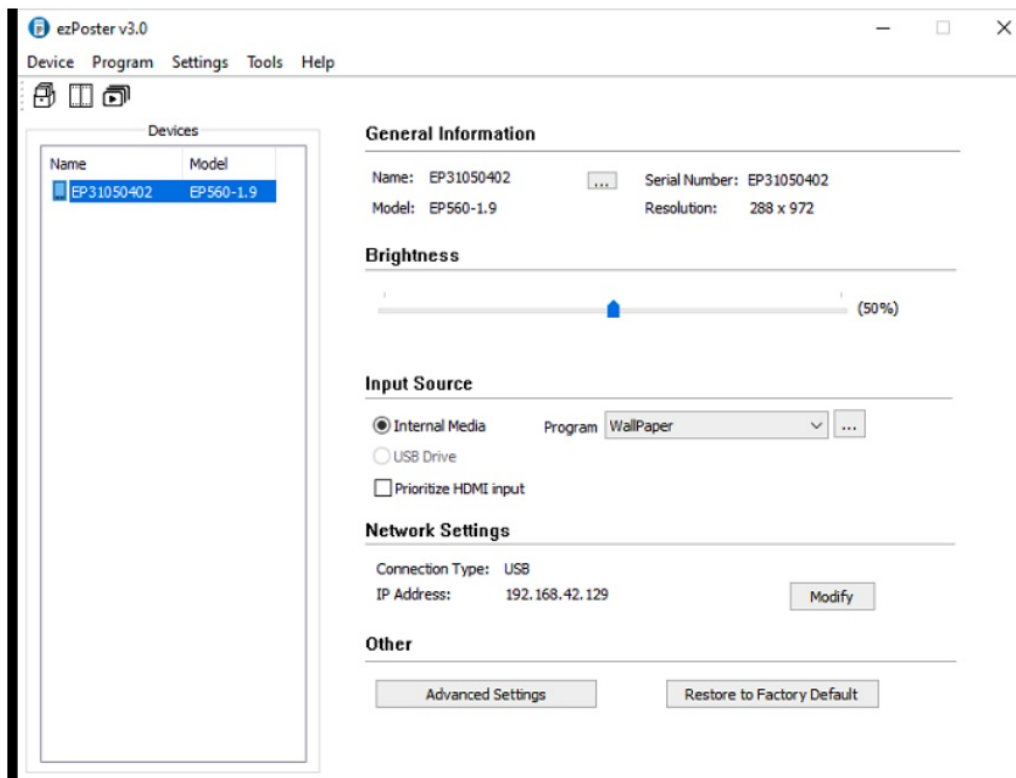
See network setting section

## 3, Control of the exposure.

### 3.1. Control ezPoster from the windows laptop.

3.1.1, Download the software from <https://www.exovisual.com/support/> and open the software.

Connect the exposure with a USB Type-A – Type B cable or through another connection method. The connected EXO exporters will show up in the Devices list.



**3.1.2, Change the name of exposure:** name of the exposure can be changed under General Information/Name if needed.

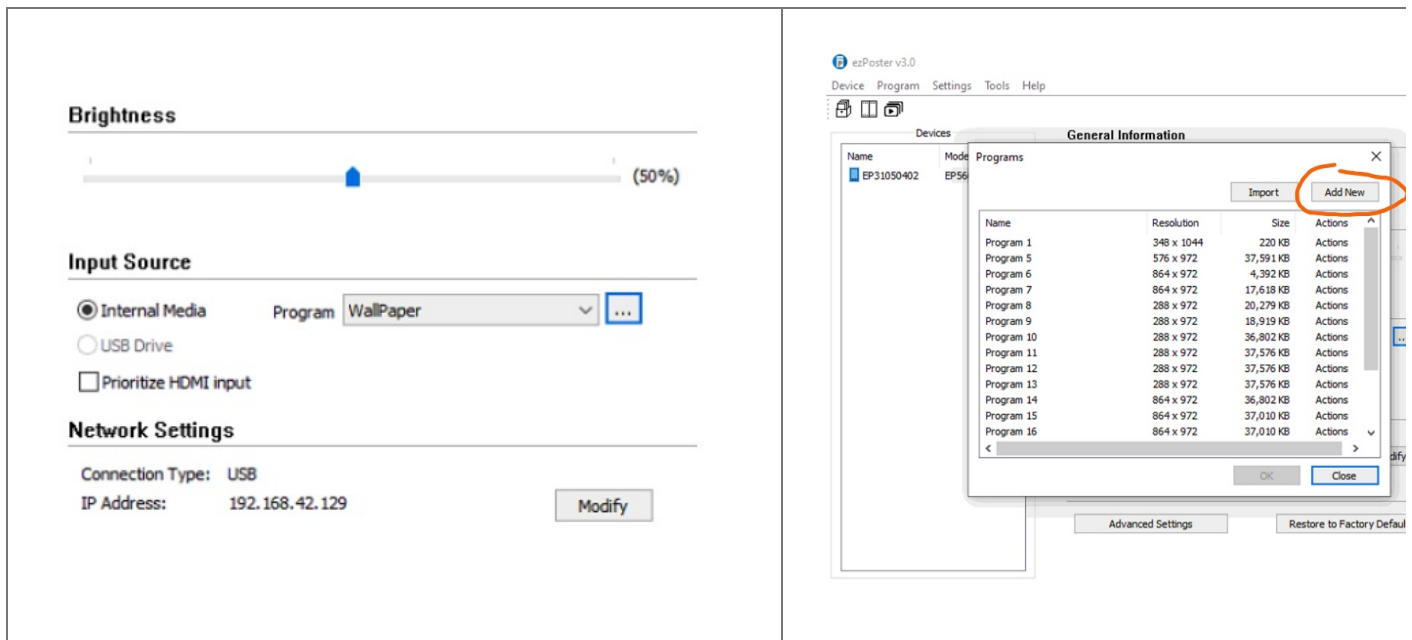
**3.1.3, Input Source:** 3 input options are available from the dropdown list.

- Check internal Media to upload content from the laptop.
- By plugging a USB drive directly onto the exposure, the photo or video content exported to the USB drive from the software previously will be displayed automatically.
- Check HDMI to stream to the exposure.

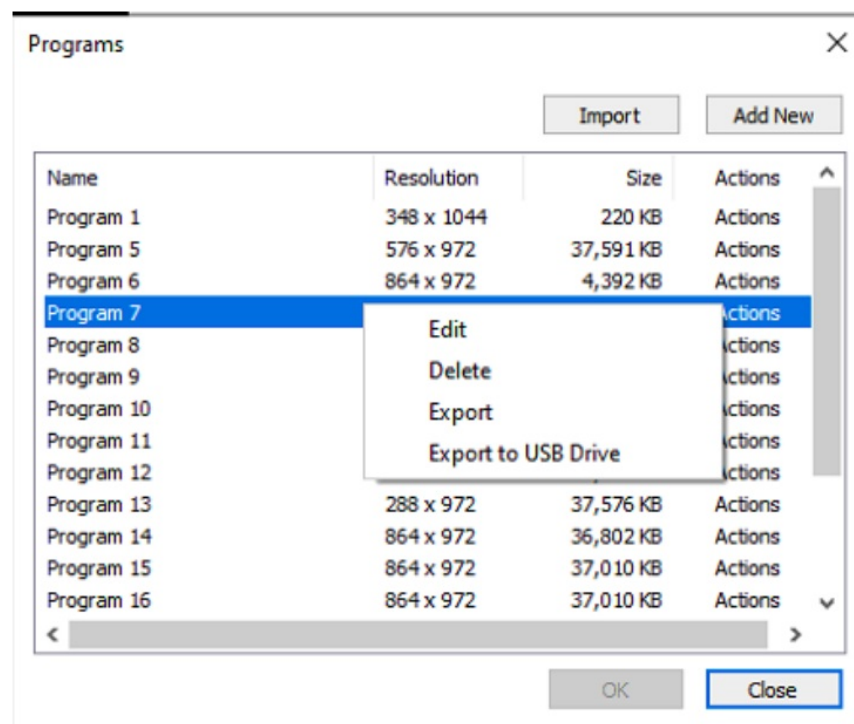
**3.1.4, Change program,** click program, select from the dropdown list,

**Add new program:** click "...", then click "add new" and follow the steps in the software to add a program.

The target device is the exposure model. Once the target device is selected, its resolution will be shown in the Width (xxx) Height(xxx) section. By default, the content will be applied to 1 ezPoster. Select more than 1 exposure wide from the width dropdown list to apply the program to a wider screen when needed. Click "+" and follow the software guide to load pictures/videos from your computer. All programs uploaded will be saved in the software under the programs list.



Select the program and right-click, a context menu will popup. You can edit, delete, and export programs from there.



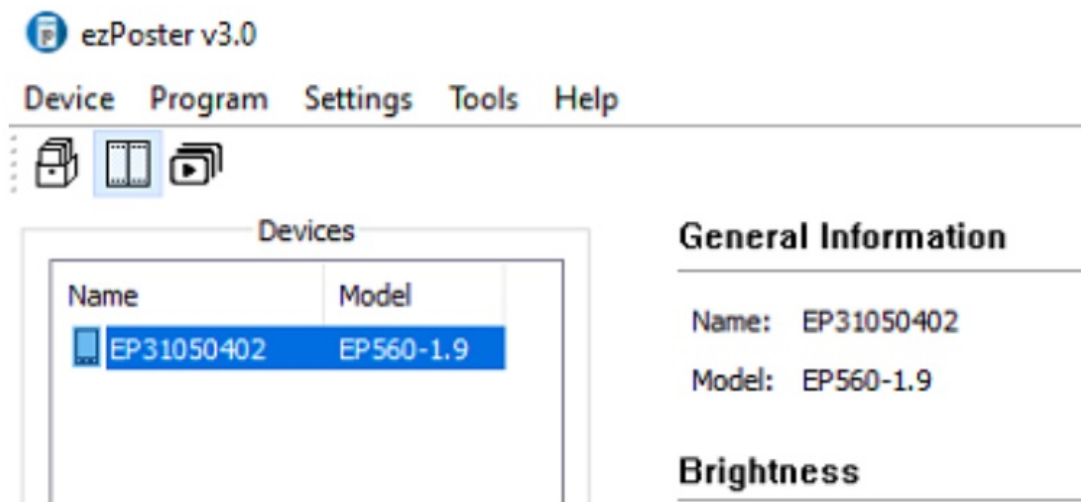
Export, the program can be exported to a file and then be imported to exposure through the software import function under the program.

Export to USB Drive, the program can be exported to a USB Drive and then be displayed by plugging in the USB Drive directly onto an exposure.

3.1.5, Cascade (connect multiple exporters to form a larger screen). There are 2 ways to cascade, They both require HDMI in/out daisy chain between the exporters. Connect the 1st zoster's HDMI out with the 2nd zoster's HDMI in, and so for the 2nd to the 3rd ....

1, Use the "cascade" wizard to cascade. (see below " Set up multiple exporters in the same network")

Select (Control + exposure selection) multiple exporters, click cascade from Device Menu, and follow the software prompt to cascade.



**Note:** Maximum exporters cascaded in one screen is 6pc. Or talk to a tech specialist for possible ways to cascade more.

2, Cascade can also be set up in “advanced settings” with offset to shift the exporters to their position on the canvas. For example, set the coordination (X, Y) of the 2<sup>nd</sup> ezPoster 1.9mm whose resolution is 288 x 972 to (288, 0), 3<sup>rd</sup> to (576, 0) and so on.

**3.1.6, Group** (operation on multiple exporters at the same time): Select (Control + exposure selection) multiple exporters, and select Group from Device Menu to form a group.

**Note:** If you have previously set up the network with multiple exporters in the same network. All exporters will show up in the device list

### 3.1.7, Setup or change network setting.

Click “Modify” under network settings to change the network setting.

WIFI Hotspot is the build-in WIFI Access Point in the exposure. SSID is the serial number of the exposure. The default password is 123456789 unless it’s changed.

WIFI is your target WIFI router if you intend to connect the exposure to your Wifi network.

Local Area Network is your target Local Area Network if you intend to connect with this option.



**Network** [X]

☒ **WiFi Hotspot**

SSID:

Password:

Channel:

☐ **WiFi**

SSID:

Password:

☐ **Local Area Network**

☒ Automatically Obtain IP Address

☐ Use Following IP Address

IP Address:

Subnet Mask:

Gateway:

**3.1.8, Set up multiple exporters in the same network:** There are 2 ways to allow multiple devices listed in the device list under one network.

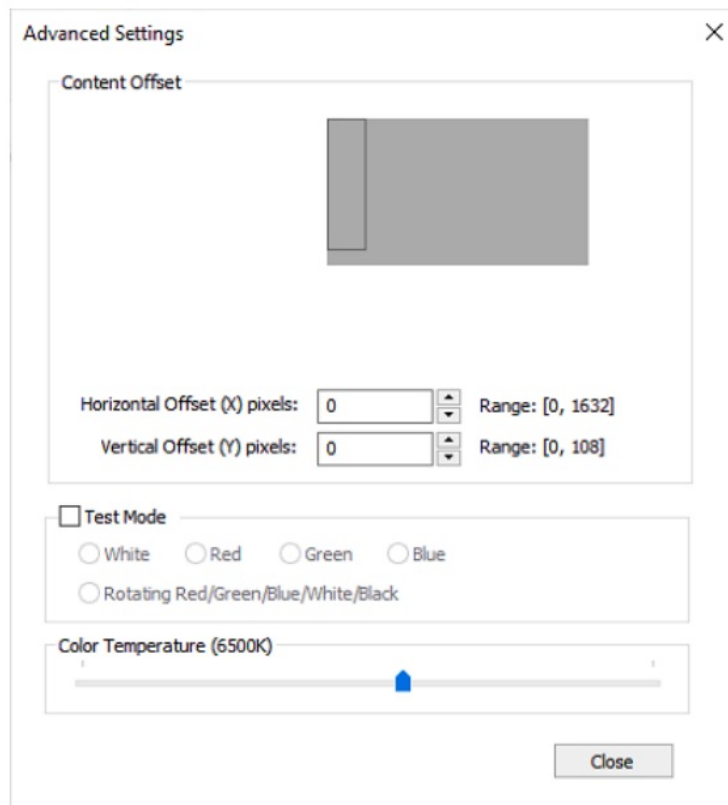
1. Use one zoster's WIFI Hotspot as a router for all other exporters: set up the rest of your poster's WIFI network with the first zoster's WIFI Hotspot SSID and Password. (You don't need to set up your 1st one or the one you are using as the router for all others).
2. Set up all the exporters to your own WIFI router.

**Tip:** To change network settings for a big number of exporters. Use the "Create Network Setting USB drive" function under the Tool menu. Input the network settings and export to the USB drive, then plug the USB drive into each exposure directly, the network of exporters will be set up with the data stored in the USB drive.

### 3.1.9, Advanced settings:

Input resolution. The default setting is 1920 x 1080(full HD). This will allow all exporters to daisy chain signal to the next one till this full HD is reached.

The normal content display will start from the left top position. Horizontal and vertical (X,Y) pixel shifts will change the position of the content displayed on the target exposure. The content can be shifted by dragging the grey block and moving its comparative position with the exposure.

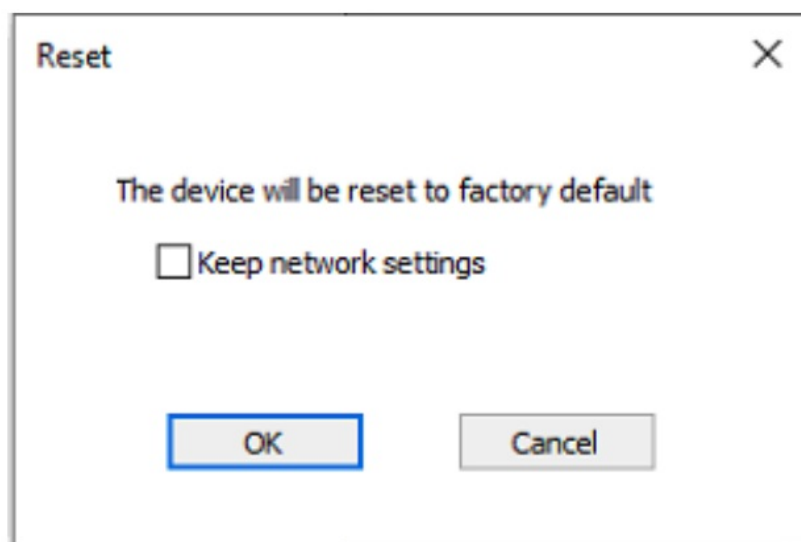


By clicking test mode and selecting the target color, the ezPoster will display the color selected.

The color temperature default setting is 6500. It can be changed on the slider.

### 3.1.10, Restore to factory default

By clicking "Restore to factory default", all setup or operational data will be erased. The network setting can still be saved by checking its box.

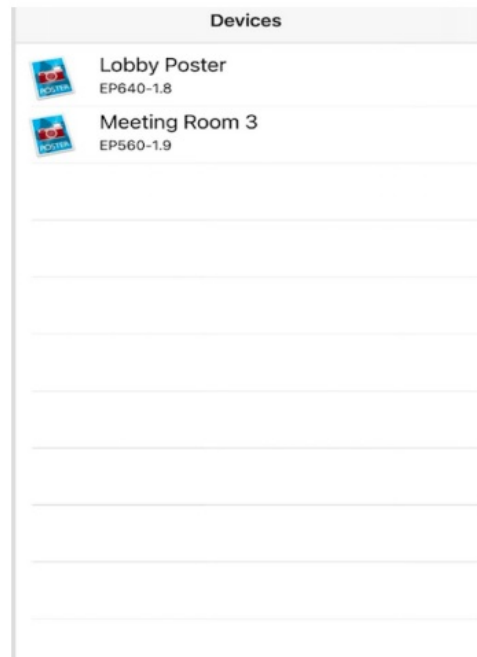
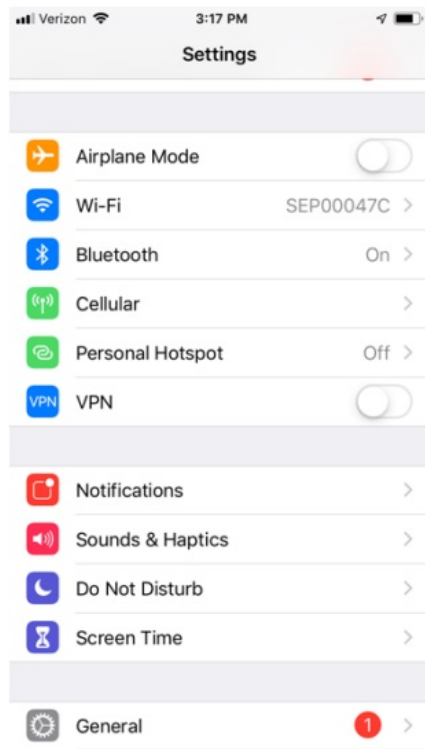


## 3.2 Control ezPoster from the iPhone.

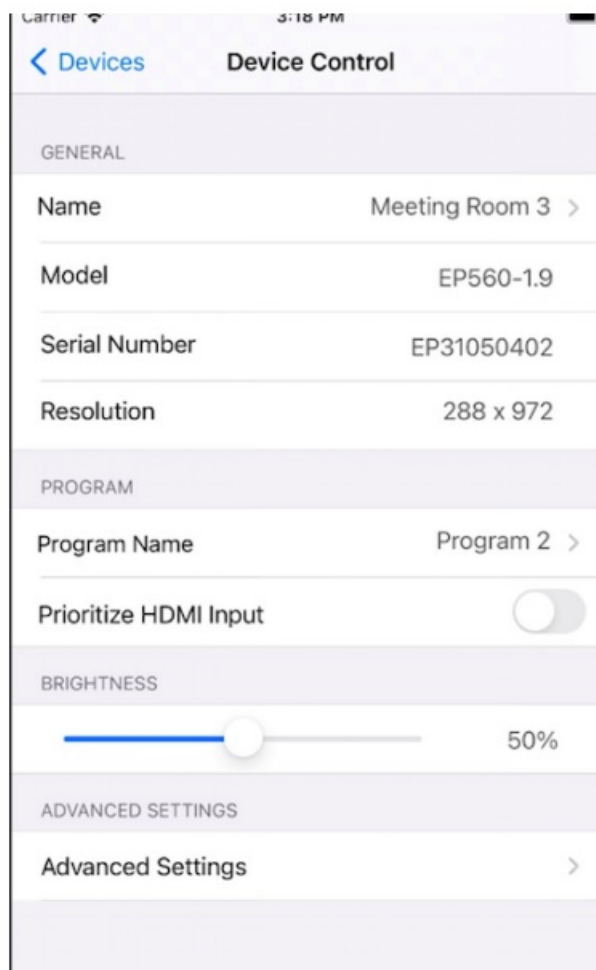
3.2.1, Download the app. "Seesharp ezPoster" from App. store.

Look for the device wifi and connect to the wifi from your phone setup. Enter default wifi password 123456789.

Tip: If WIFI password is changed. Use a USB A-B cable and laptop software to get control of the screen. Network settings can be changed from laptop software.



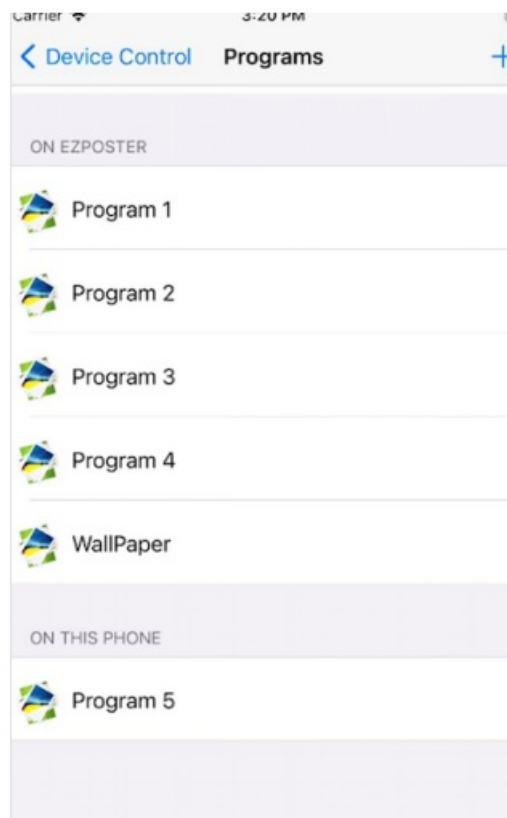
When a smartphone is connected to the ezPoster through the ezPoster built-in WIFI Access Point or through an external router, the devices will be listed on the front page of the EXO ezPoster app. Click on the device, the device control page will show up.



3.2.2, Name Name of the device. The device can be re-named here.

3.2.3, Program name the name of the program uploaded into the exposure from the internal storage.

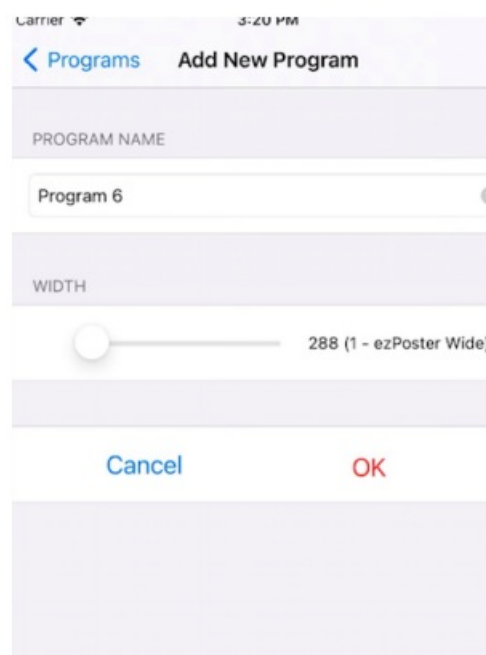
3.2.3.1, Click to enter the Program name. All programs uploaded will be shown in the list.



3.2.3.2, Click “+” to add more programs.

3.2.3.3, Width. Select how many exporters on the width of the content is to be displayed. Select OK to go to the content upload page.

3.2.3.4 “ Click +” to select content from Camera or Album



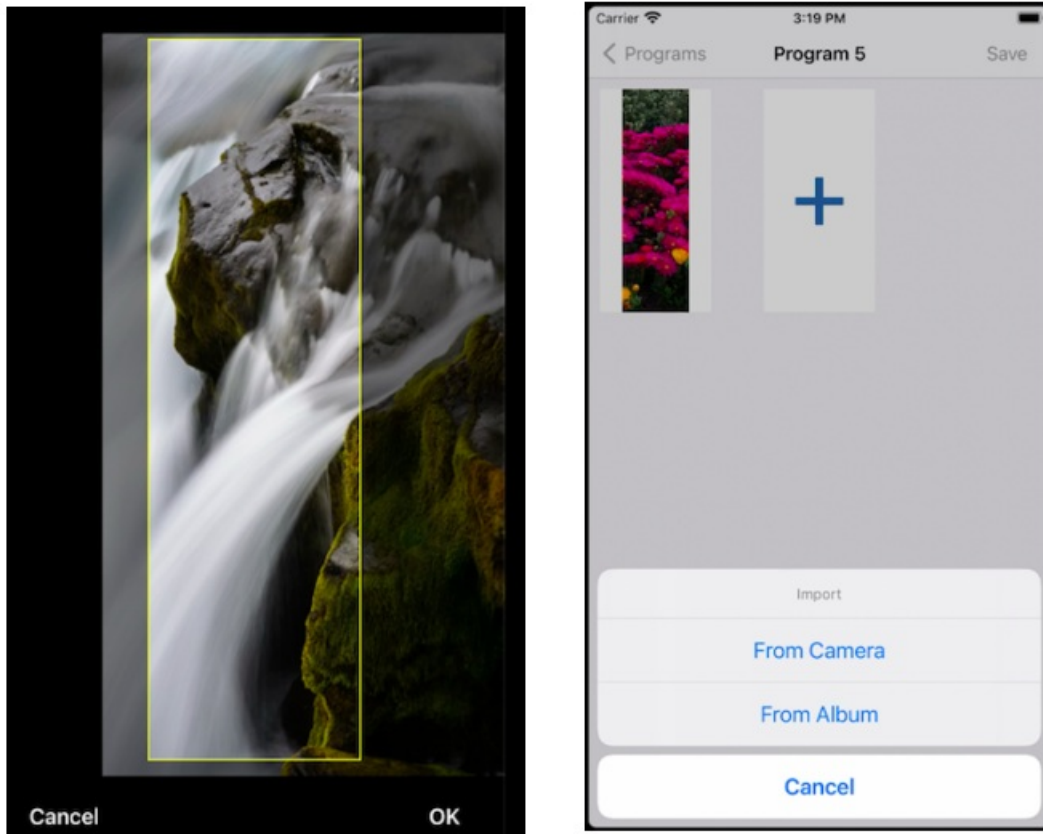
From the Camera, select content by taking a picture/video with your phone.

From Album, select content from the smartphone album.

Select one of the above to go next step.

Pictures can be cropped here. Click “+” again to add more pictures/videos to the program.

Pictures/videos added in the same program will be played in sequence.



3.2.3.5, Prioritize HDMI input, by activating this option, the ezPoster will receive HDMI content over other input options.

3.2.4, Brightness can be changed by dragging the slider.

3.2.5, Advanced Settings:

3.2.5.1, Content offset. Starting from the left top position (0,0), a number of pixels will be shifted Horizontally and vertically.

- Horizontal (X). X number of pixels on the X-axis that the content will be shifted.
- Vertical (Y). Y number of pixels on the Y-axis that the content will be shifted.

3.2.5.2, Color Temperature. The color temperature from cold to warm of the exposure can be changed by dragging the slider. The default value is 6500K.

3.2.5.3, Test mode. By clicking test mode, patterns of White, Red, Green, and Blue and rotating of White, Red Green and blue will be available for selection.

3.2.5.4, Restore to factory default. Data input or edit on the exposure will be erased when restore to factory default.

## Support :

Tech support phone: 833 733 7427

Download Apps from <https://www.exovisual.com/support/>



+1 833 733 7427 V3.1



[www.exovisual.com](http://www.exovisual.com)

## Documents / Resources



[EXO VISUAL ezPoster All-in-One LED Display](#) [pdf] User Guide  
ezPoster, All-in-One LED Display, ezPoster All-in-One LED Display

## References

-  [EXO Visual, Inc – the expert of All-in-One LED display](#)
-  [Tech Support – EXO Visual, Inc](#)