



EXIT Aqua Flow Water Track Set User Manual

[Home](#) » [EXIT](#) » EXIT Aqua Flow Water Track Set User Manual 

Contents

- [1 EXIT Aqua Flow Water Track Set](#)
- [2 Safety instructions](#)
- [3 Maintenance](#)
- [4 PLEASE NOTE](#)
- [5 GUARANTEE CERTIFICATE](#)
- [6 PARTS AND TOOLS](#)
- [7 INSTALLATION](#)
- [8 Documents / Resources](#)
- [9 Related Posts](#)



EXIT Aqua Flow Water Track Set



Product Information

The EXIT water track is a fun play area developed for children aged between 3 and 10 years. It is made of cedarwood which has a natural defense against wood rot, molds, and pests. The wood is treated with a water-based stain for extra protection and a natural finish. The water track is tested and approved in accordance with EN-71 and CE, which guarantees its safety.

Safety Instructions

- Not suitable for children under 36 months. Small parts.
- Only for domestic use.
- The water track is for outdoor use only.

Assembly Instructions

- The water track must be assembled by an adult.
- Place the EXIT water track on a smooth surface.

Maintenance Instructions

- Regularly check for splinters, screws, and the strength of connections and/or fasteners. Tighten screws and nuts as necessary. Regularly means at the beginning and twice a month during the outdoor play season.
- Annually check the condition of the stain layer. For optimal durability, it is necessary to apply a new stain layer every two years. Use a water-based paint or stain with a natural base.

Warranty Information

Dutch Toys Group B.V. provides a warranty of 1 year on connections and accessories and a warranty of 2 years on the wood if used correctly.

Product Usage

The EXIT water track is designed for outdoor use only and should be assembled by an adult on a smooth surface. Children under 36 months should not use the water track due to small parts. The water track should be regularly checked for splinters, screws, and the strength of connections and/or fasteners. Tighten screws and nuts as necessary. Annually check the condition of the stain layer and apply a new one every two years for optimal durability. If you experience any issues with the product, contact your dealer or the place of purchase. Keep the warranty certificate together with the original proof of purchase to make a claim under warranty.

Warning! CHOKING HAZARD! – Small parts. Not for Children under 3 years old. Adult assembly required. This product should, at all times, be used by the child under direct supervision of an adult. OUTDOOR USE ONLY. Only for domestic use.



Congratulations with the purchase of your EXIT water track. The water track is developed to provide a fun play area for children aged between 3 and 10 years.

Safety

EXIT water tracks are tested and approved in accordance with EN-71 and CE, which guarantees the safety of the water track.

Safety instructions

- Not suitable for children under 36 months. Small parts.
- Only for domestic use.
- The water track is for outdoor use only.

Assembly

- The water track must be assembled by an adult.
- Place the EXIT water track on a smooth surface.

Material

EXIT water tracks are made of Fir. This type of wood provides a natural protection against wood rot, mould and vermin. As extra protection and finish, the wood has been treated with a water-based stain. This naturally-based stain is an environmentally-friendly product.

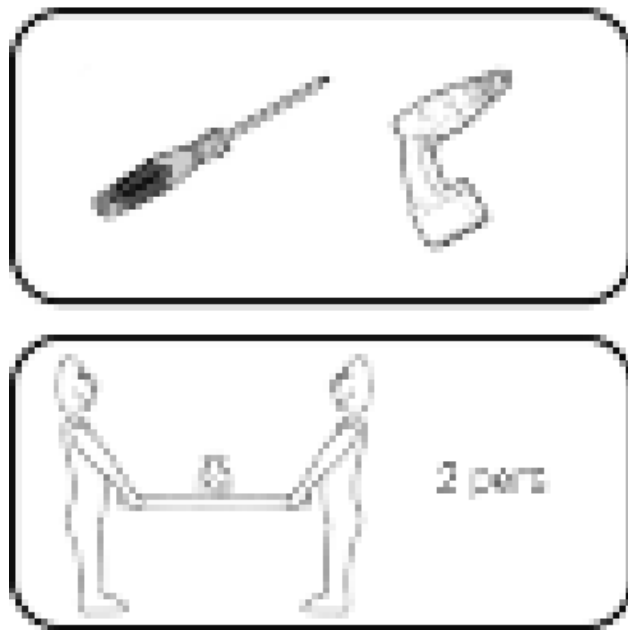
Maintenance

- Regularly check the water track for splinters. You must also check the screws and the strength of the links and/or fixings. Where applicable, tighten the screws and nuts. 'Regularly' is understood to mean: after assembly and twice a month during the outdoor playing season.
- Check the condition of the stain every year. To ensure the product's durability, water tracks must be given a new layer of stain every two years. Use water-based paint or a naturally-based stain.

PLEASE NOTE

- The water track is not 100% watertight. This is normal and does not affect the operation of the water track.
- The EXIT water tracks are designed for personal use. It is not permitted to rent out or place the water track in public areas like schools or day-care centres. The guarantee and any other liabilities shall expire if the water track is rented out or used in public areas.
- Wood is a natural product that is subject to weather influences that could cause the wood to warp and split. The guarantee does not cover damage caused by weather influences, such as cracks in the wood and/or

warping of the panels which do not have a negative influence on the construction of the EXIT water track.



If you do not receive the product in good condition or if any other problems occur, then please contact your dealer or the point of sale from which you purchased the product.

GUARANTEE CERTIFICATE

Dutch Toys Group B.V. provides a guarantee on the EXIT water tracks. A one-year guarantee applies to all connecting pieces and accessories, and a two-year guarantee on the wood.

Dutch Toys Group B.V. reserves the right to not offer the guarantee if:

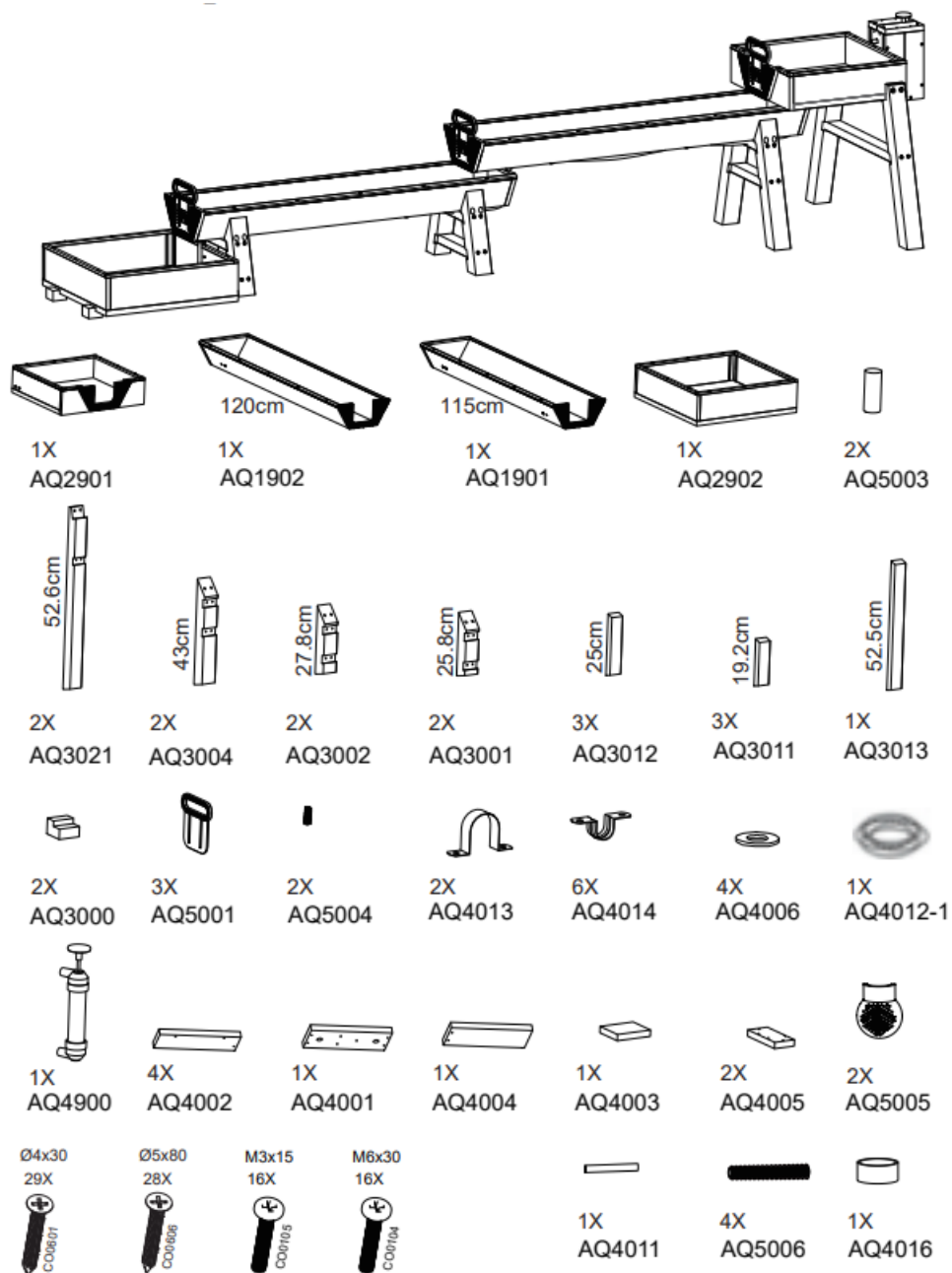
- the original purchase receipt is missing;
- natural weather influences on the wood cause the wood to warp or split, which does not have a negative influence on the construction of the EXIT water track;
- the EXIT water track is used for purposes other than what it was developed for;
- the assembly method differs from the prescribed assembly method;
- technical repairs are not carried out professionally;
- the EXIT water track is used in public places like schools and day-care centres;
- the EXIT water track is rented out to third parties;
- regular checks are not conducted and parts, screws and connecting pieces are not replaced where necessary.
- the EXIT water track is not stained or painted once every two years.

Date of purchase	:	_____ - _____ - 20____
Product description	:	_____
Article number	:	_____
Dealer	:	_____ _____ _____ _____
Batch number	:	_____

PLEASE NOTE!

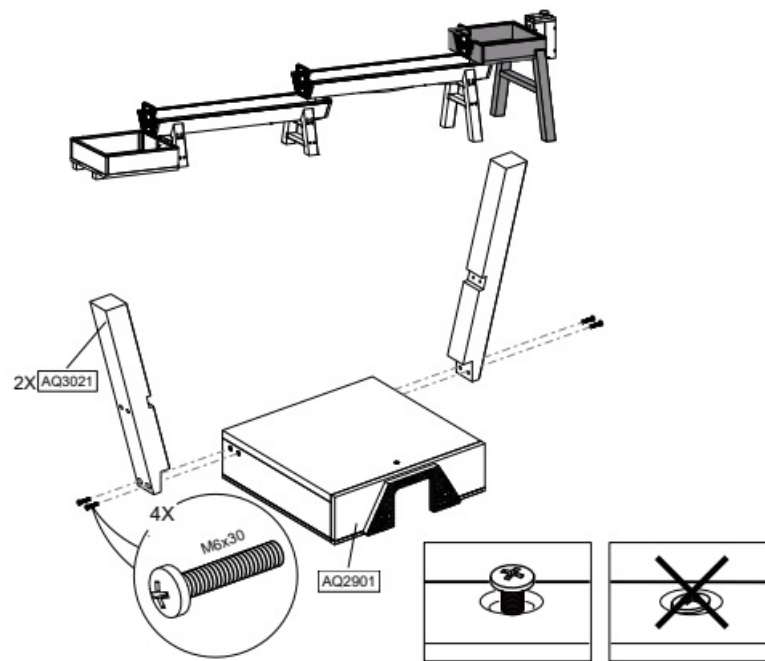
The guarantee only applies upon submission of this form and the original purchase receipt. Please store them in a safe place!

PARTS AND TOOLS

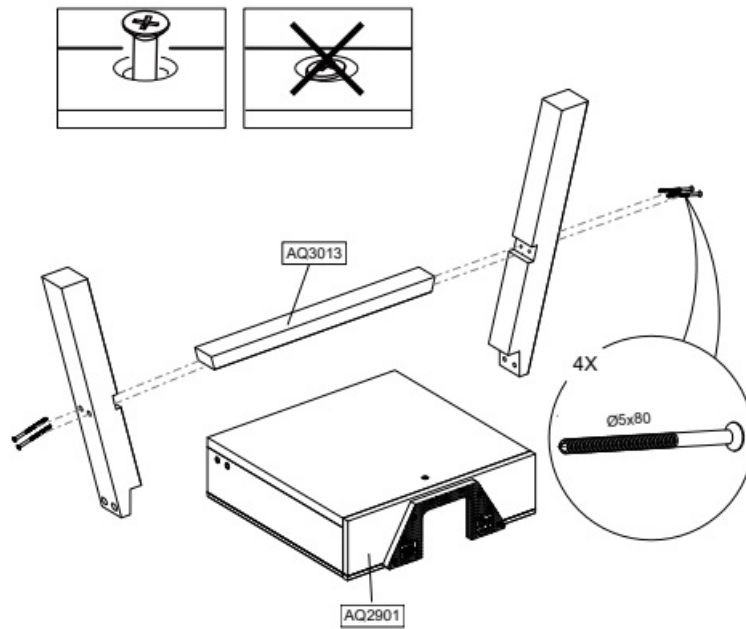


INSTALLATION

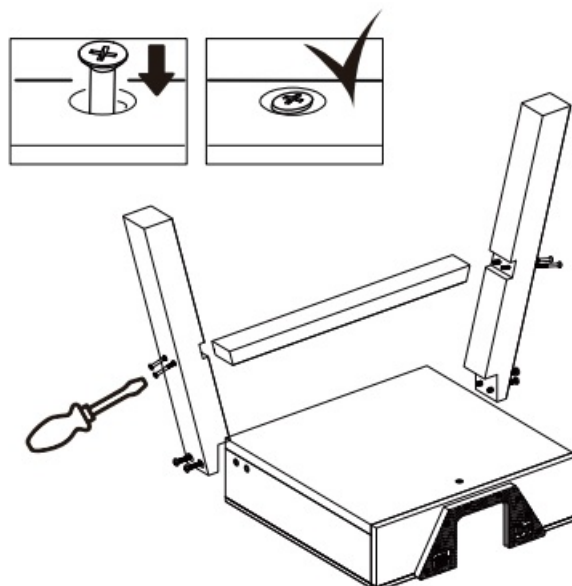
1



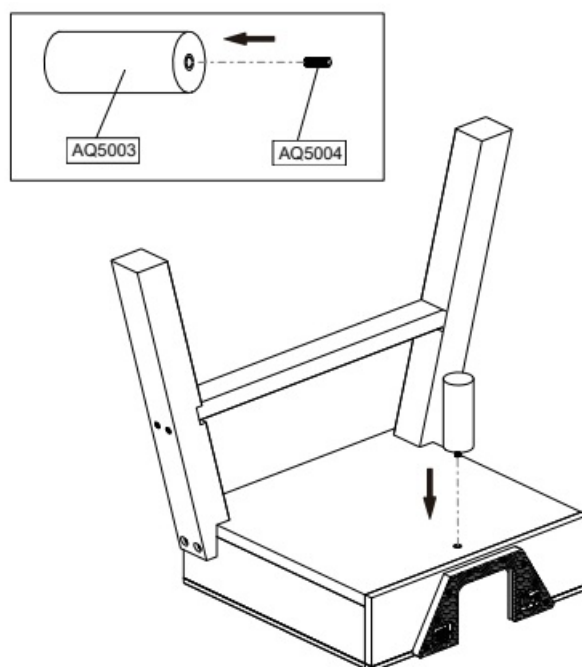
2



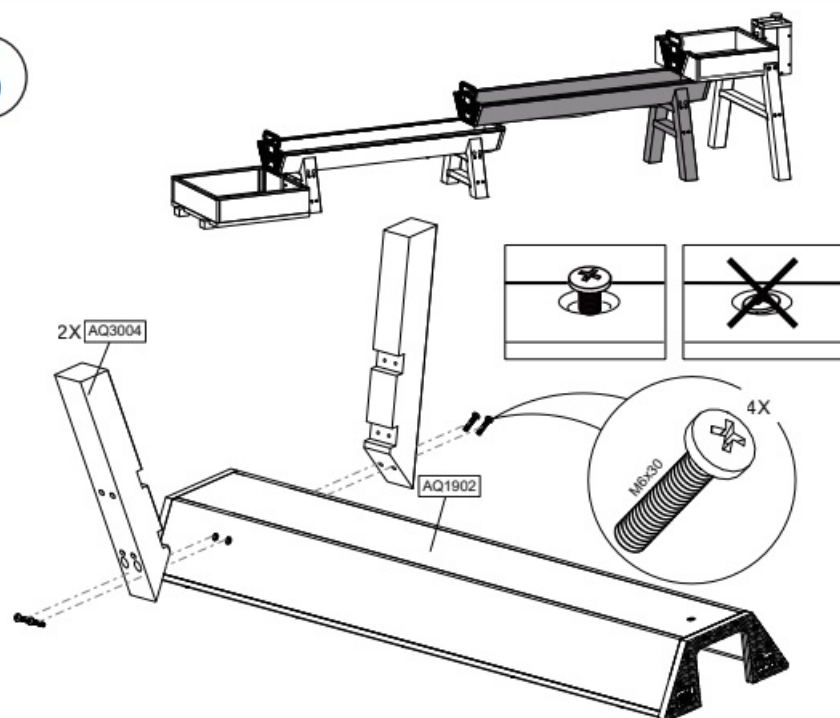
3



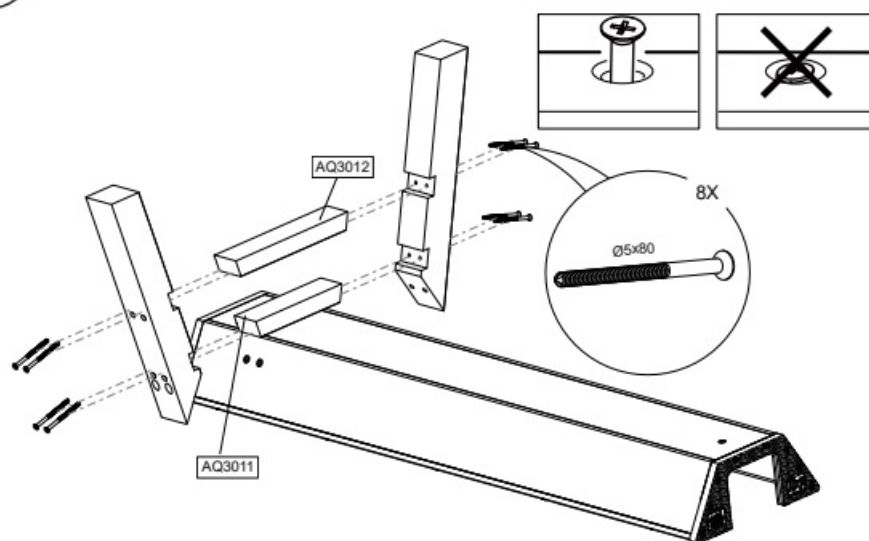
4



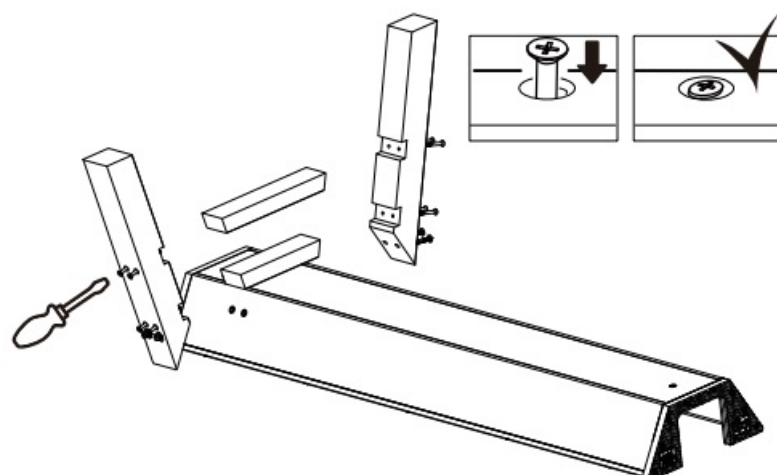
5



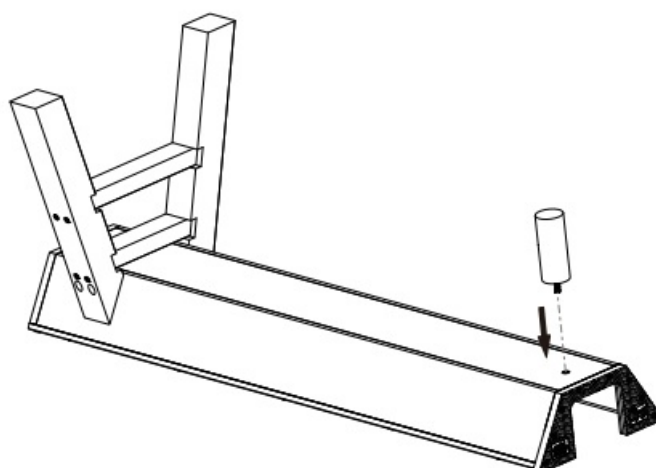
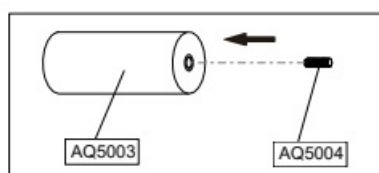
6



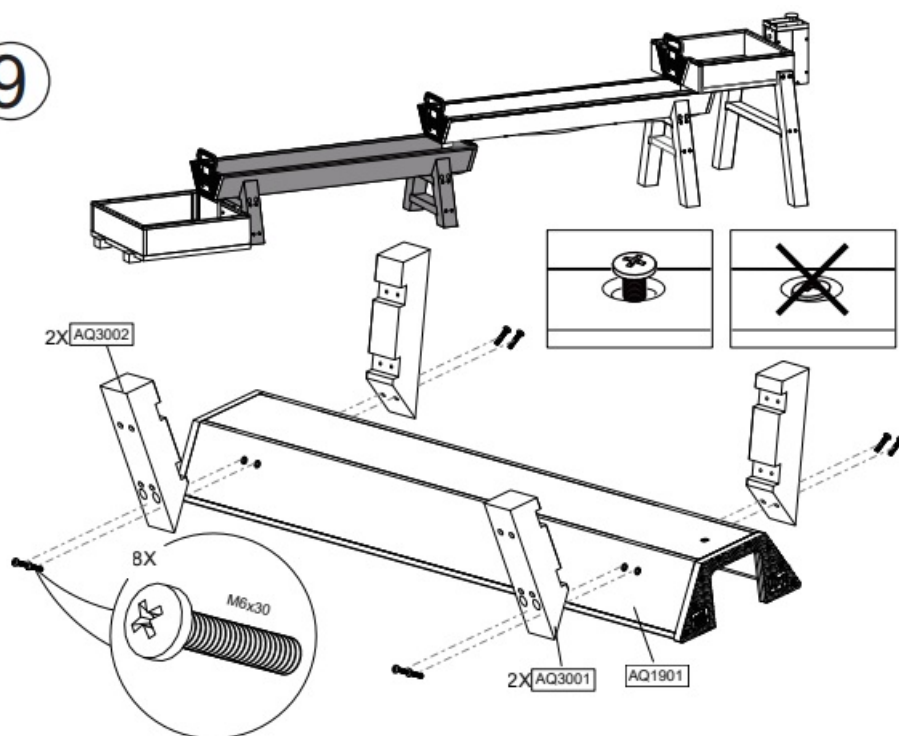
7



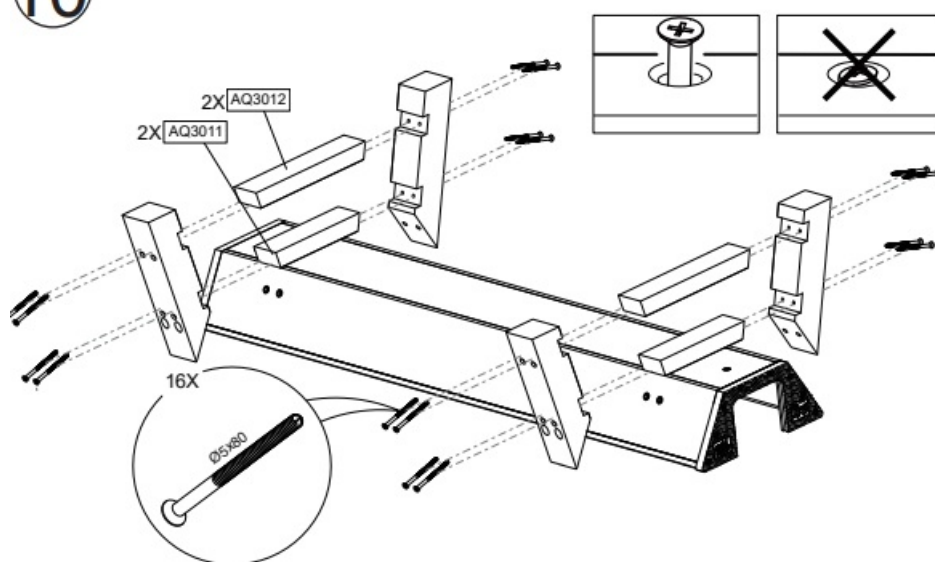
8



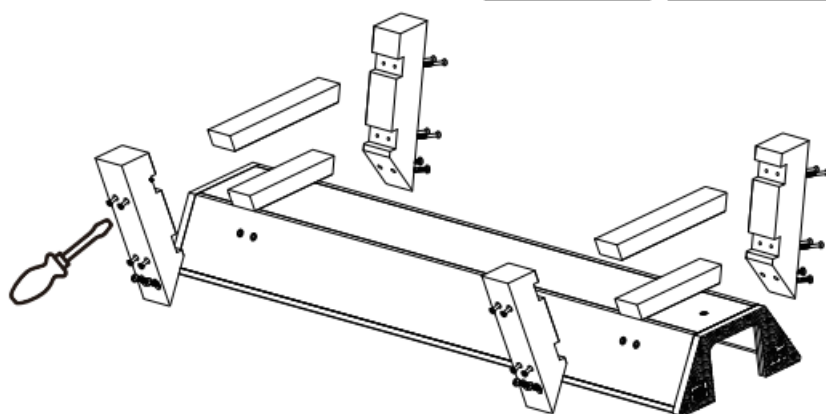
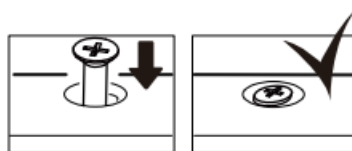
9



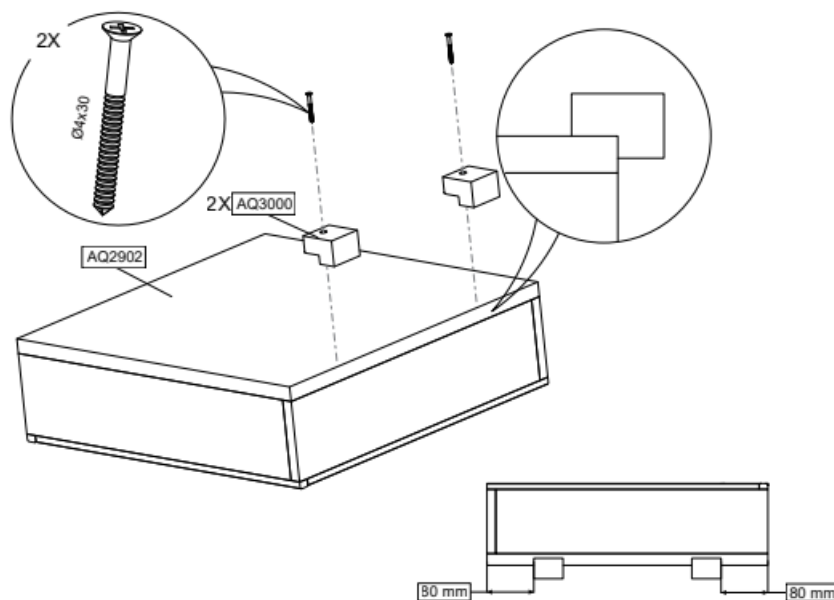
10



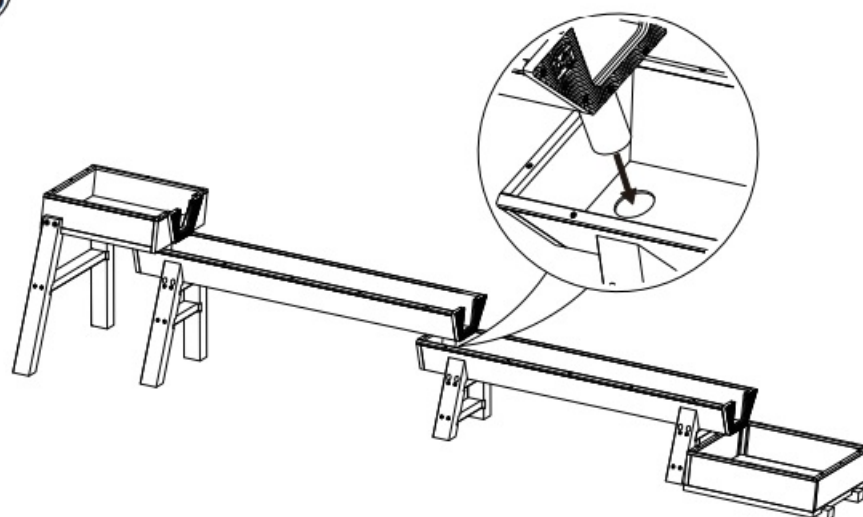
11



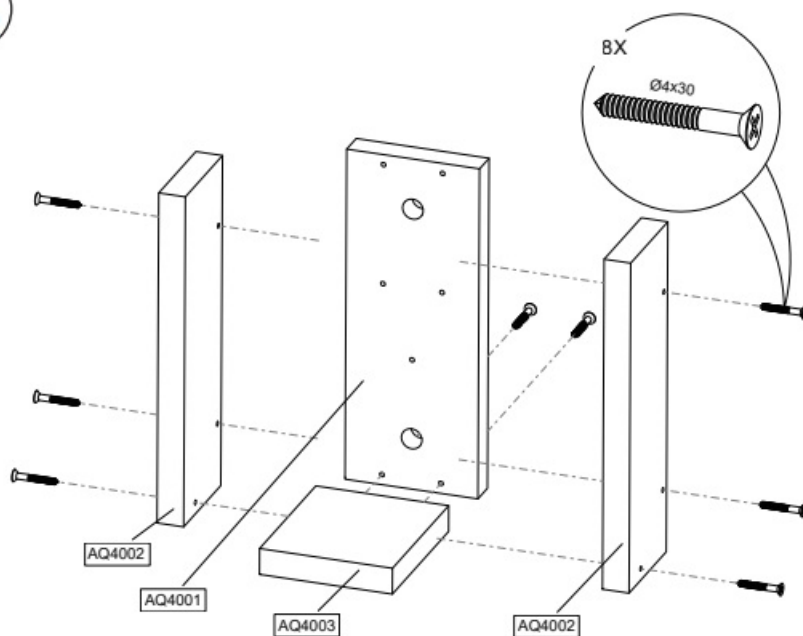
12



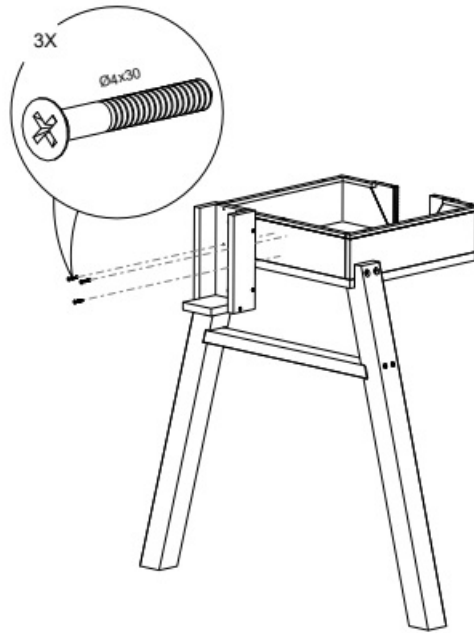
13



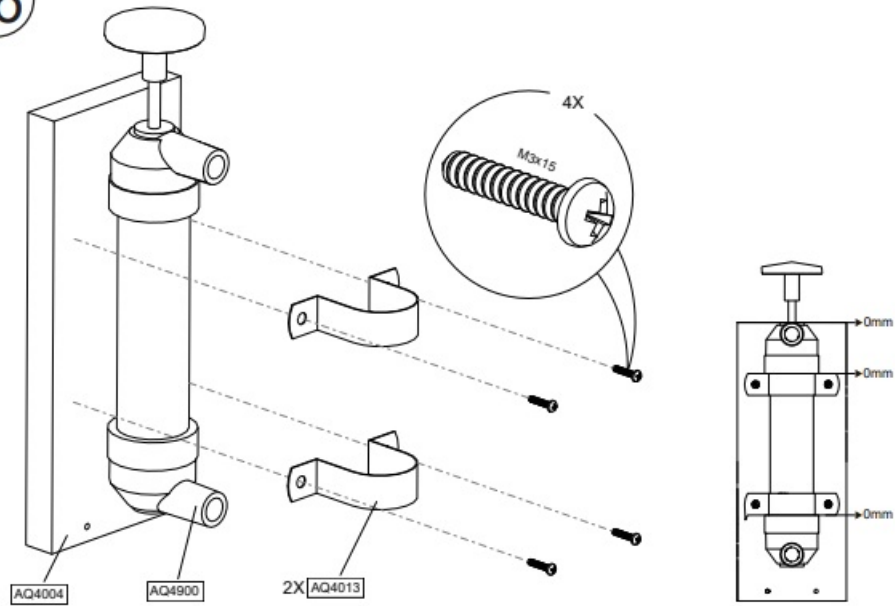
14



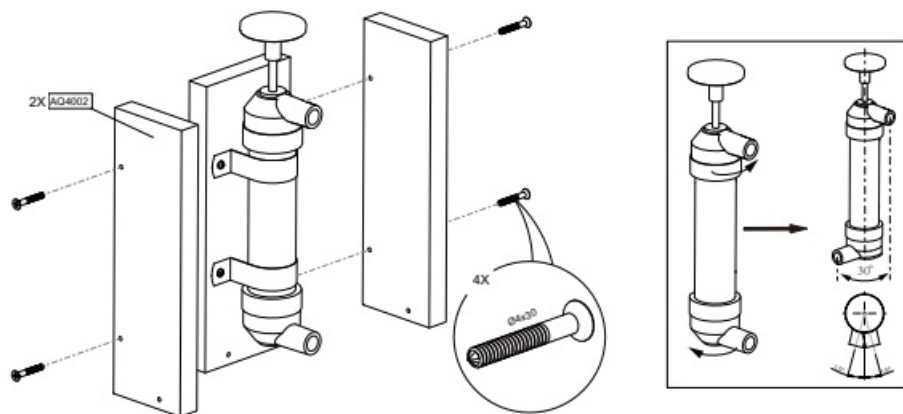
15



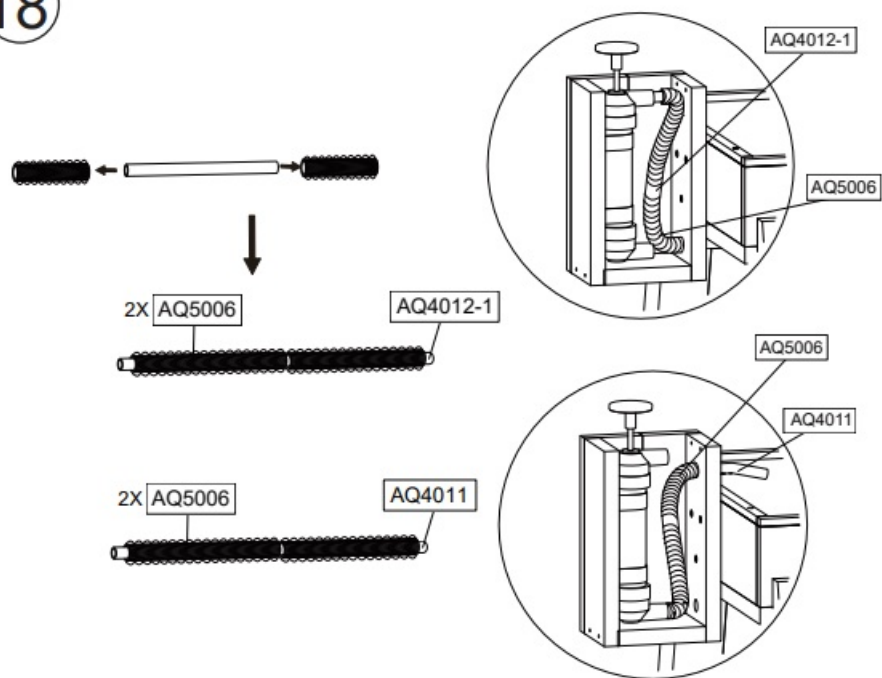
16



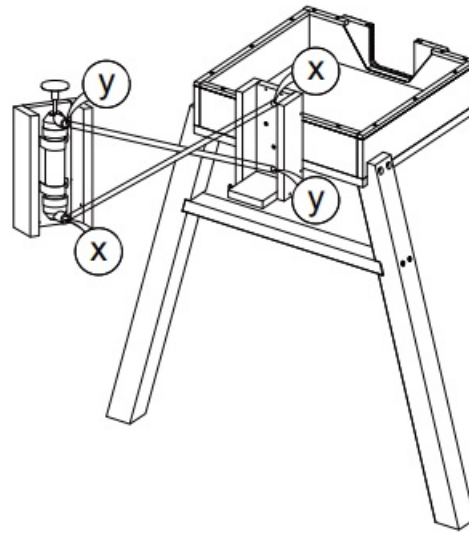
17



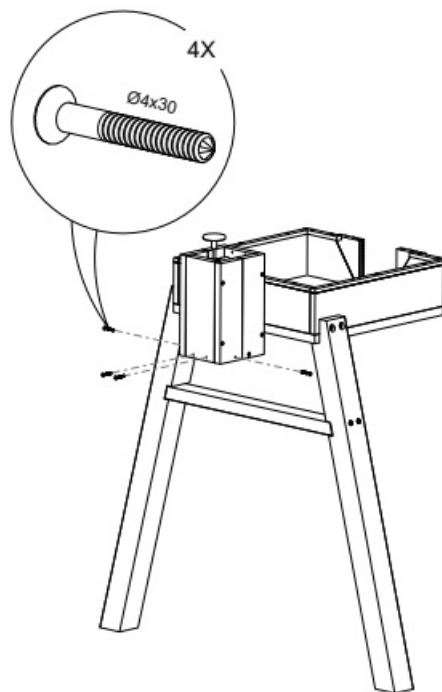
18



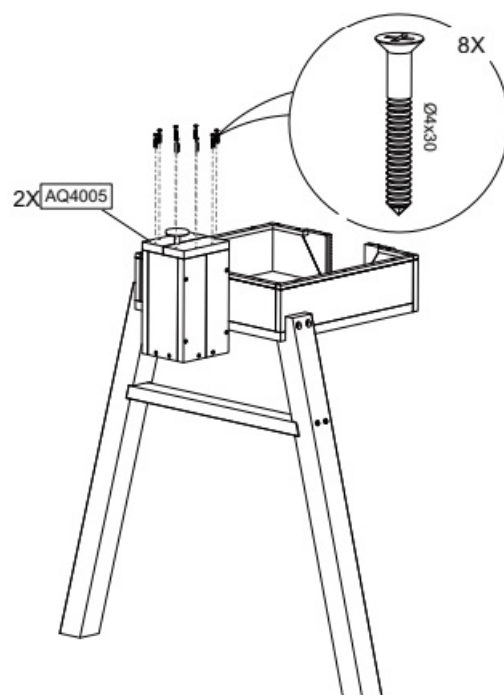
19



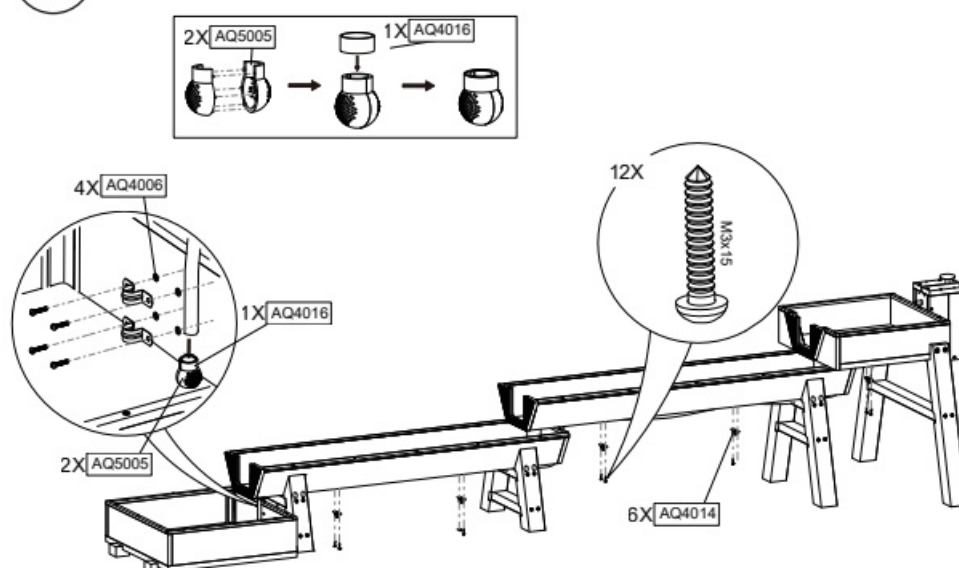
20

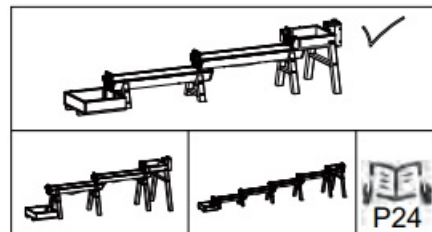
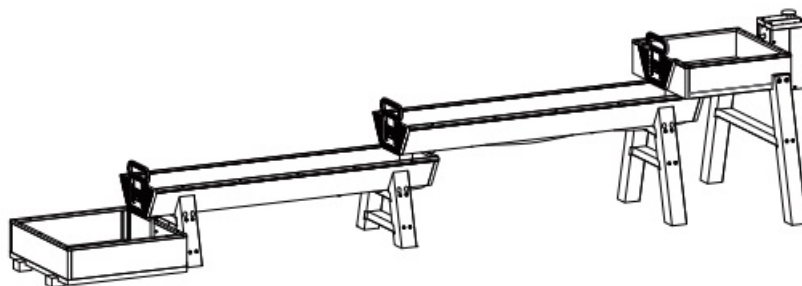
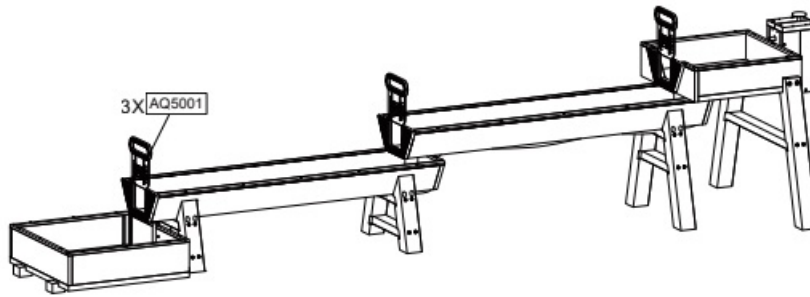


21



22





Documents / Resources

	<p>EXIT Aqua Flow Water Track Set [pdf] User Manual MWO-55101-V04, Junior-Set, Super-Set, Mega-Set, Aqua Flow, Aqua Flow Water Track Set, Water Track Set, Track Set</p>
--	--