

**EXIT  
TOYS**  
**94x77 Exit  
Aksent Sandpit**



## EXIT TOYS 94x77 Exit Aksent Sandpit Installation Guide

[Home](#) » [EXIT TOYS](#) » EXIT TOYS 94x77 Exit Aksent Sandpit Installation Guide 

### Contents

- [1 EXIT TOYS 94x77 Exit Aksent Sandpit](#)
- [2 Specifications](#)
- [3 Product Usage Instructions](#)
- [4 FAQ](#)
- [5 Documents / Resources](#)
  - [5.1 References](#)
- [6 Related Posts](#)



**EXIT TOYS 94x77 Exit Aksent Sandpit**

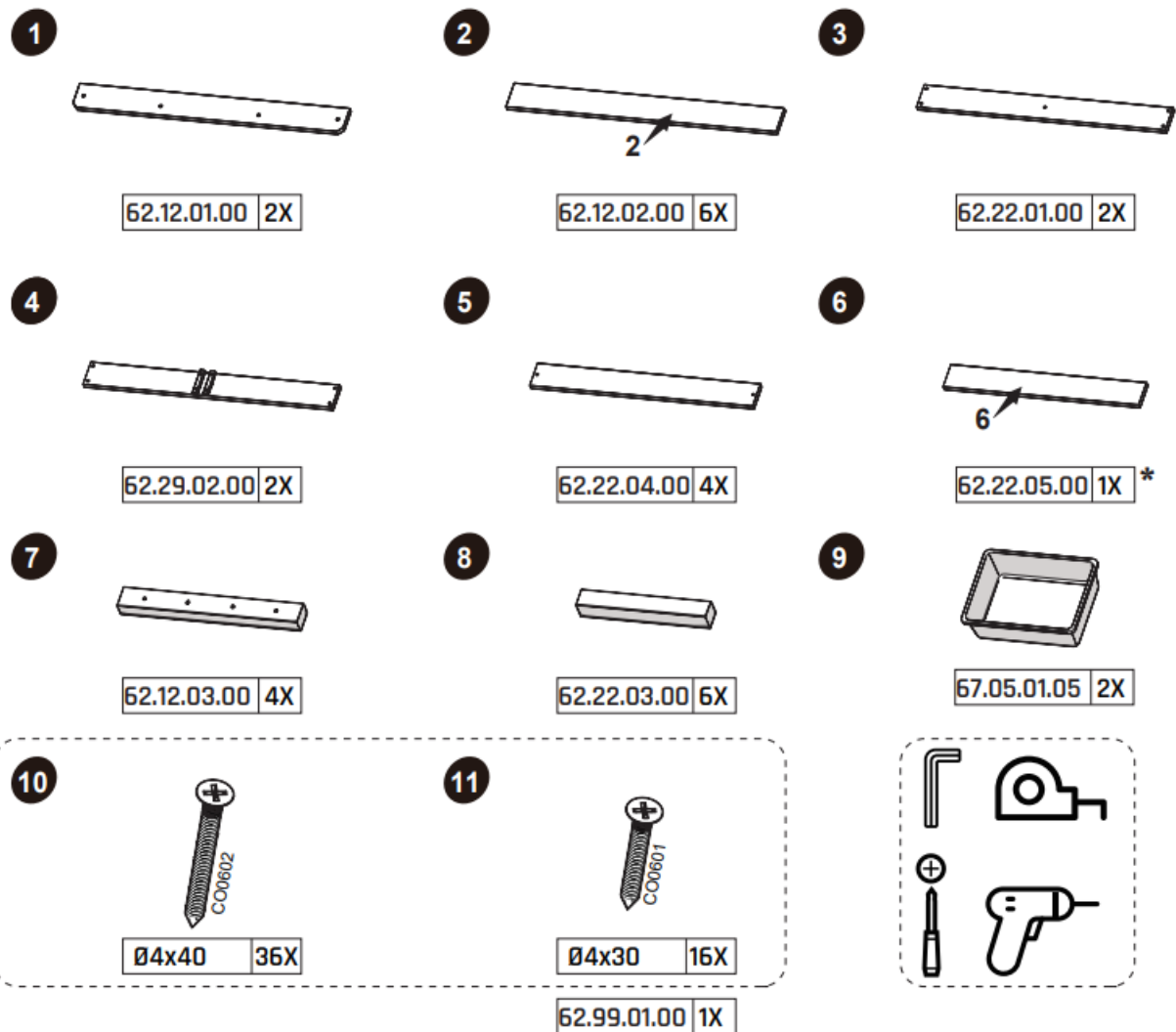


## Specifications

- **Product Name:** EXIT Aksent Sandpit 94×77
- **Model Number:** MSW-A002-V01
- **Max Weight Capacity:** 30kg
- **Recommended Age:** Not suitable for children under 24 months
- **Usage:** Outdoor use only

## Product Usage Instructions

### Parts



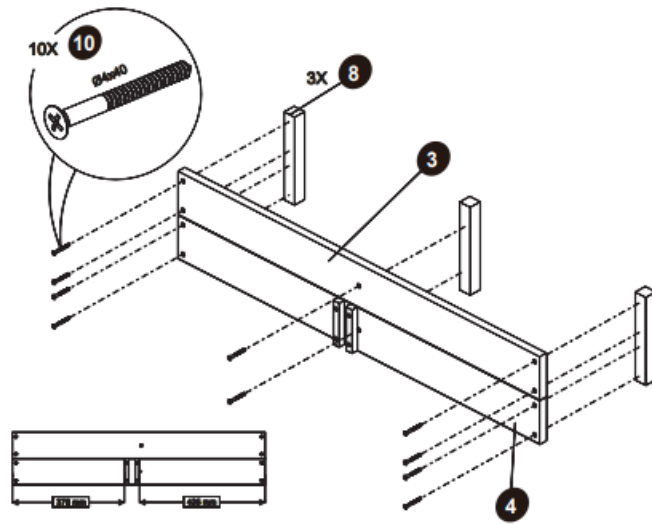
\*

BOX REFERENCE:	XX.XX.X
PRODUCTION ID:	XXX XXX

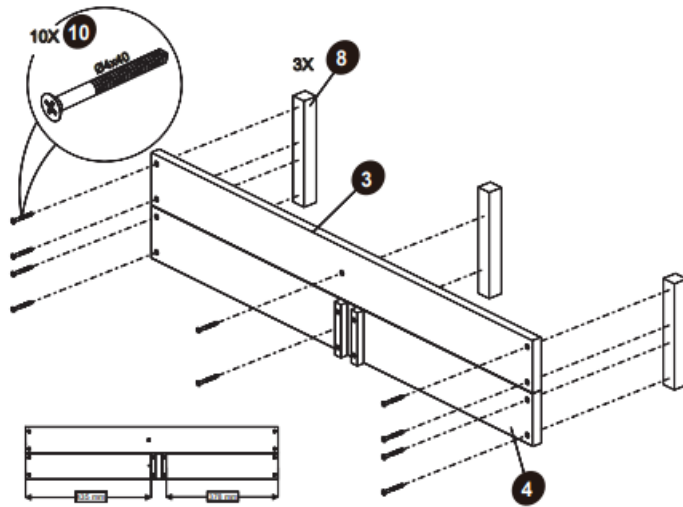


Assembly:

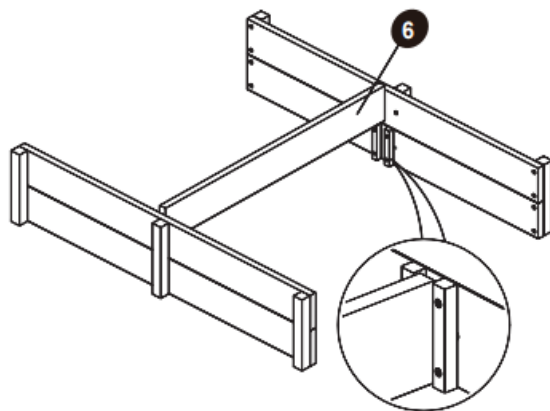
1



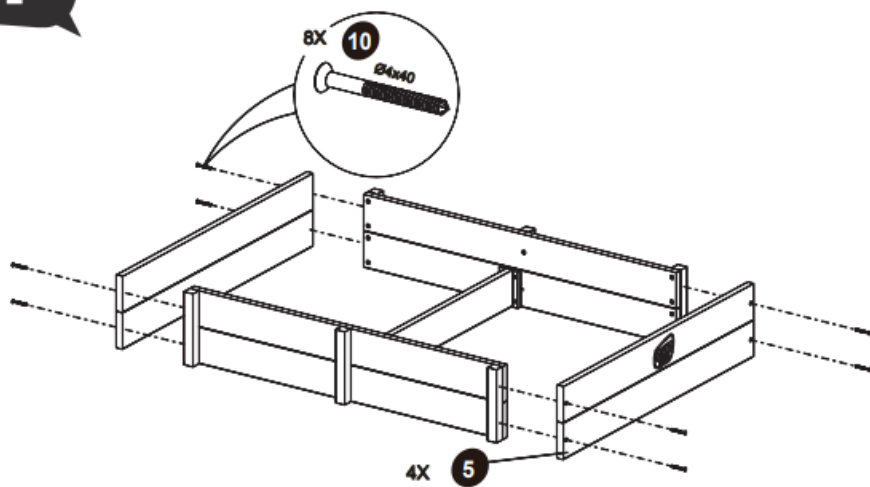
2



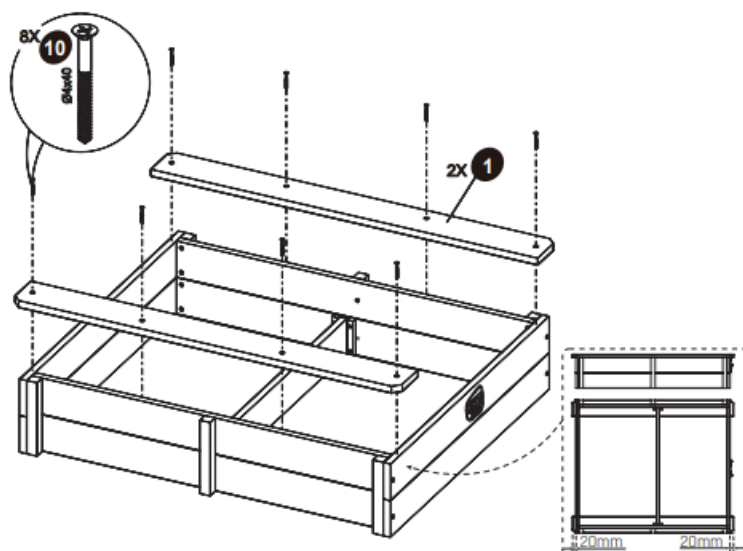
3



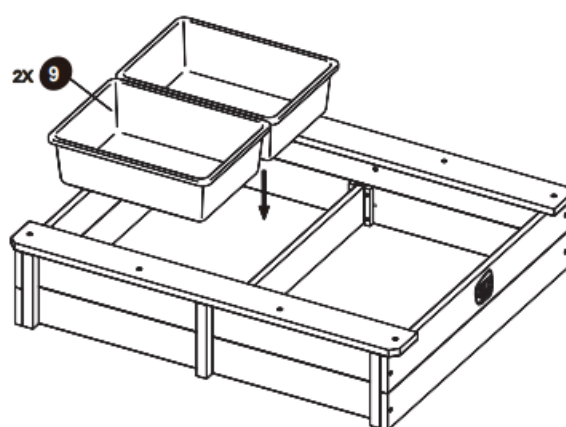
4



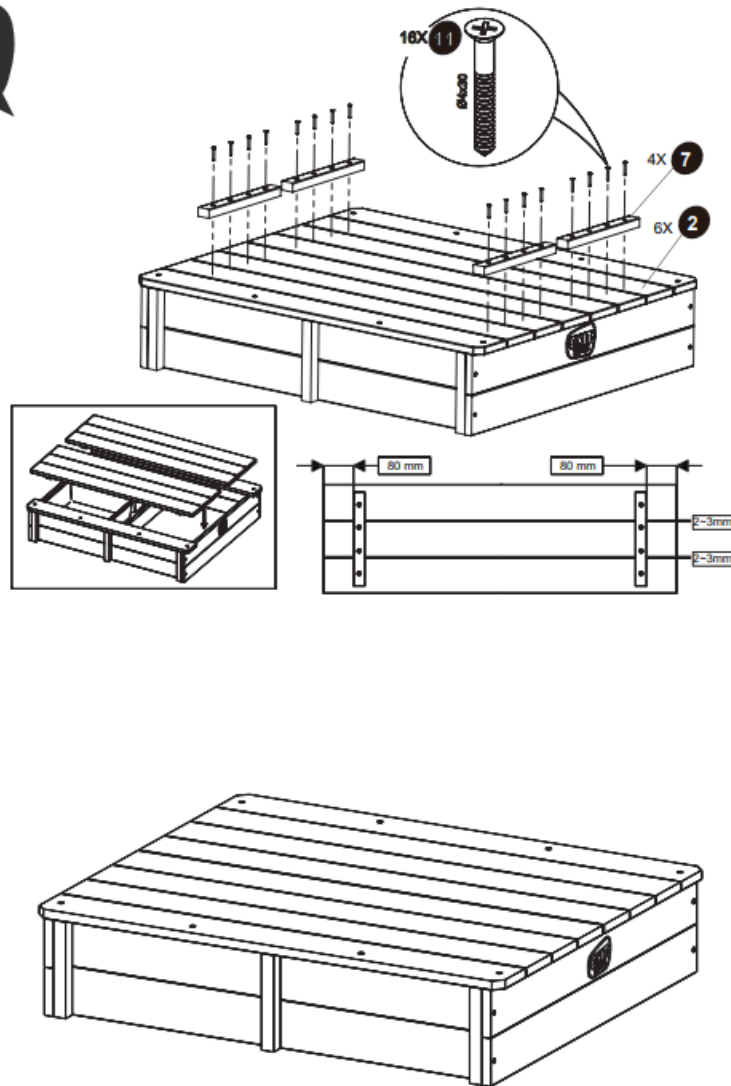
5



6



7



1. Identify all the components using the provided manual.
2. Follow the step-by-step instructions to assemble the sandpit.
3. Ensure all parts are securely connected.

#### Placement:

Choose a suitable outdoor location for the sandpit. Ensure it is placed on a flat surface away from any hazards.

#### Fill with Sand:

Fill the sandpit with clean play sand, ensuring not to overfill beyond the recommended capacity.

#### Play:

Allow children to play in the sandpit under adult supervision. Encourage imaginative play and ensure proper hygiene practices.

#### FAQ

##### Q: Can this sandpit be used indoors?

A: No, this sandpit is designed for outdoor use only.

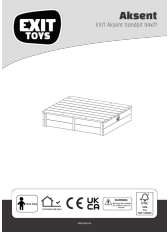
##### Q: What is the maximum weight capacity of the sandpit?

A: The maximum weight capacity is 30kg.

**Q: What age range is suitable for this sandpit?**

A: This sandpit is not suitable for children under 24 months.

## Documents / Resources

	<p><a href="#">EXIT TOYS 94x77 Exit Aksent Sandpit</a> [pdf] Installation Guide 94x77 Exit Aksent Sandpit, Exit Aksent Sandpit, Aksent Sandpit, Sandpit</p>
---	---

## References

- [User Manual](#)

[Manuals+.](#) [Privacy Policy](#)

This website is an independent publication and is neither affiliated with nor endorsed by any of the trademark owners. The "Bluetooth®" word mark and logos are registered trademarks owned by Bluetooth SIG, Inc. The "Wi-Fi®" word mark and logos are registered trademarks owned by the Wi-Fi Alliance. Any use of these marks on this website does not imply any affiliation with or endorsement.