



ExloTy W-US002 Bluetooth Mesh Smart Plug User Manual

[Home](#) » [ExloTy](#) » ExloTy W-US002 Bluetooth Mesh Smart Plug User Manual 



**W-US002 Bluetooth Mesh Smart Plug
User Manual**



**Bluetooth Mesh Smart Plug
Works with Alexa Echo Only
(Alexa Echo Required)**

Contents

- [1 Getting to know your Smart plug](#)
- [2 Getting to know voice command](#)
- [3 You can create a Routines in the AmazonAlexa"App](#)
- [4 Give us your feedback](#)
- [5 Documents / Resources](#)

Getting to know your Smart plug

Specifications

- Power Supply: AC 100V-240V (50Hz-60Hz)
- Load Current: 10A or 16A
- Operation Temperature: -20° to 60 ° C/-4° to 122 °
- Bluetooth: Bluetooth 5.0

Step 1

Plug in your Smart Plug Plug your Smart

Plug into the power outlet blue LED will flash.(If the LED don't flash please press the button for 5 seconds until the LED flash)

Step 2

Set up your Smart Plug with one voice command

1. Before setting up your Smart Plug make sure of Alexa Echo is online.
2. After ensuring the plug LED flash, you say:" Alexa, Discover Devices." to Alexa Echo.
3. When the setting starts, the light of the Smart Plug will go out. And there will be once click sound.
4. In above a minute, Alexa Echo will discover the Smart Plug5.Alexa Echo will give you a voice notification, saying : "Found the Plug".

Getting to know voice command

How to operate voice control

You can speak voice commands to Alexa Echo to control the smart plug

"Alexa, turn on/off the plug."

"Alexa, turn on/off the plug at 4:15 pm."

"Alexa, turn on/off the plug after 30 minutes."

"Alexa, rename the plug to "xxxxxx"."

- **Download the Amazon Alexa app**

Download and install the latest version of the Alexa app from the app store.

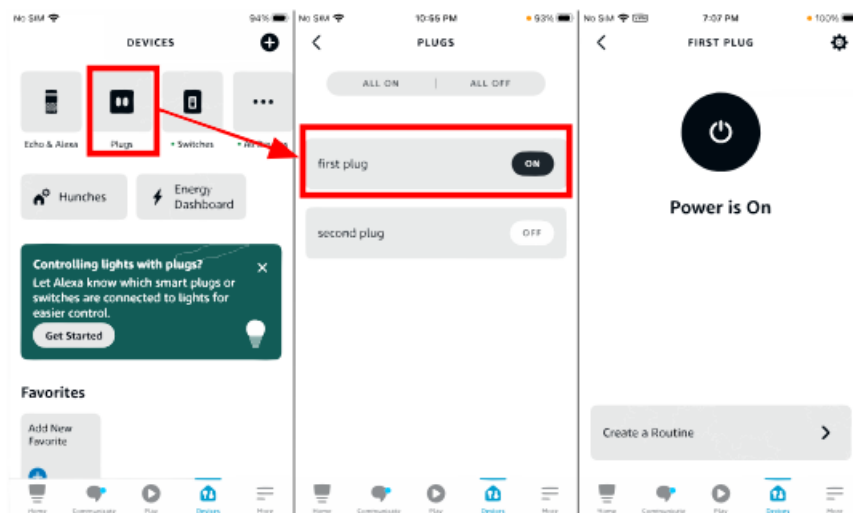
- **Remote Control with app**

You can control the smart plug through voice command and "Amazon Alexa"App.



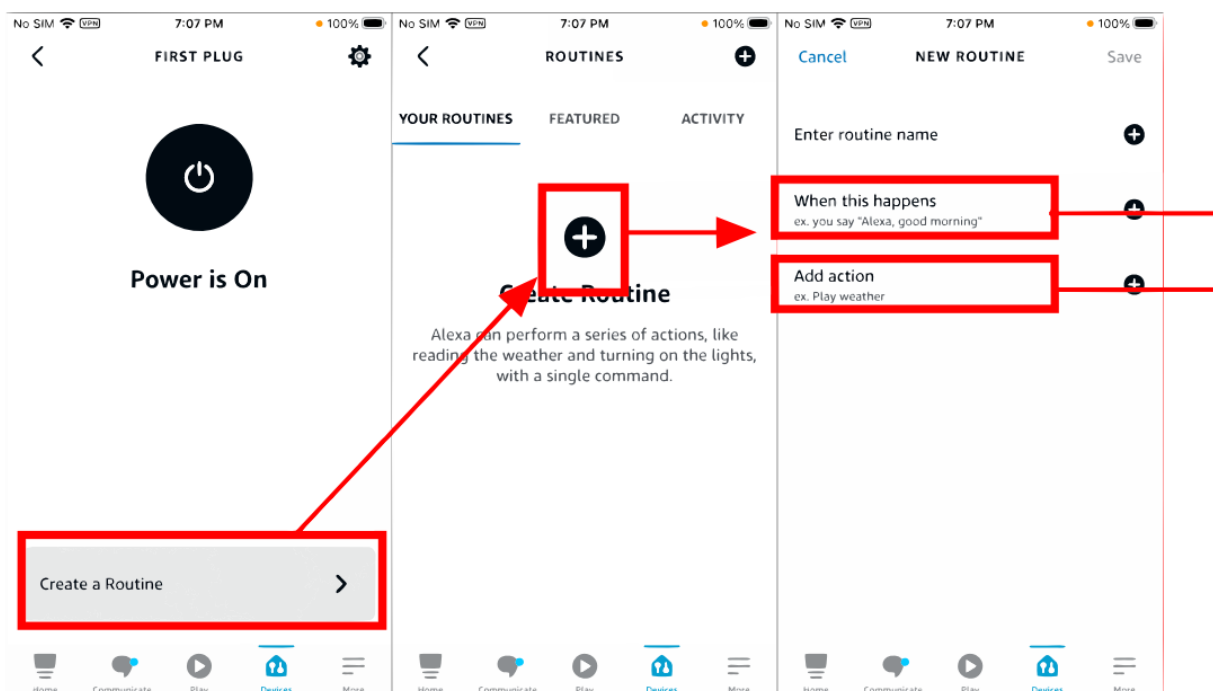
“Amazon Alexa”App

https://www.amazon.com/b/ref=sxsts_snpl_2_1_36ef12b9-d045-4131-9c05-97c5b048fdb3?node=18354642011&pf_rd_p=16f886ec-624d-493f-ad68-ee0d11bf20e4&pf_rd_r



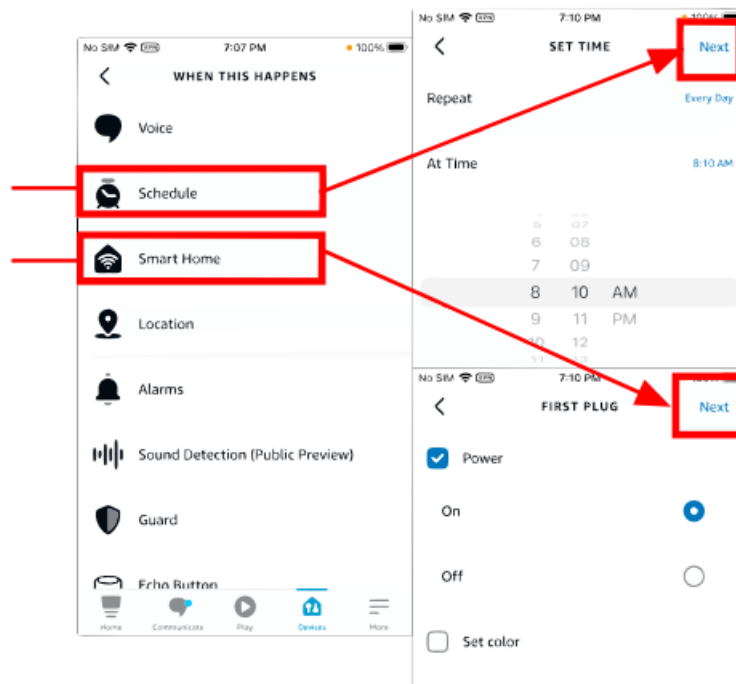
You can create a Routines in the AmazonAlexa”App

1. Tap more at the bottom of the home page, then select Routines.
2. Tap on the plus symbol at the top of the screen to make your own, or enable one of the pre-made Routines in the Featured Tab.

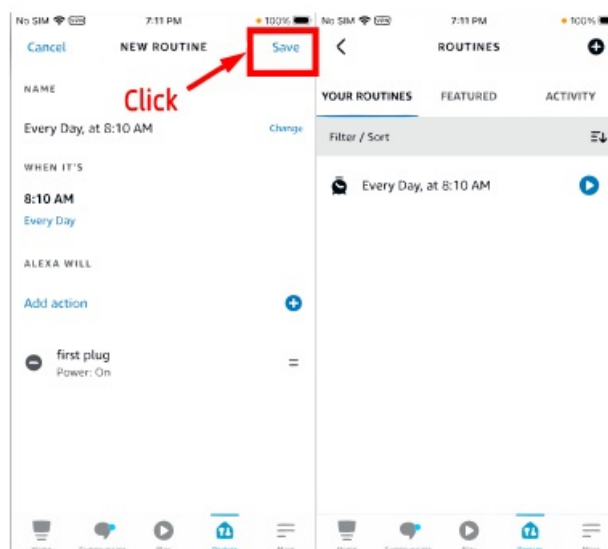


3. “When this happens is” to “Schedule”, and set time. “Add action”to”Smart Home”, and select your number of

plug.

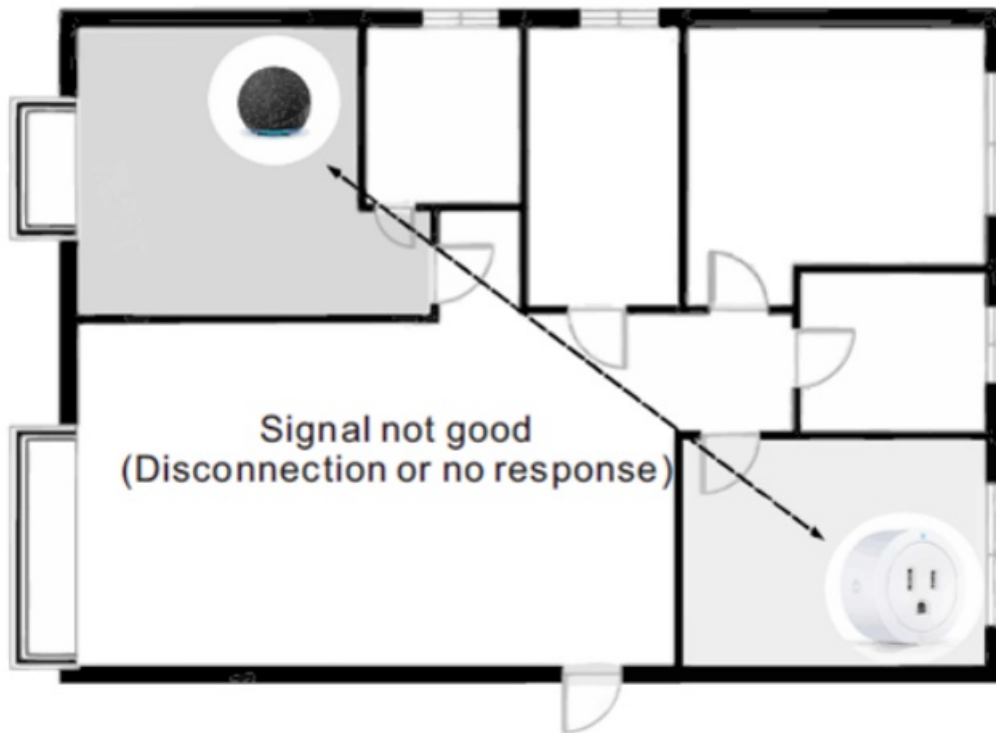


4. Please remember to click the “Save” button!

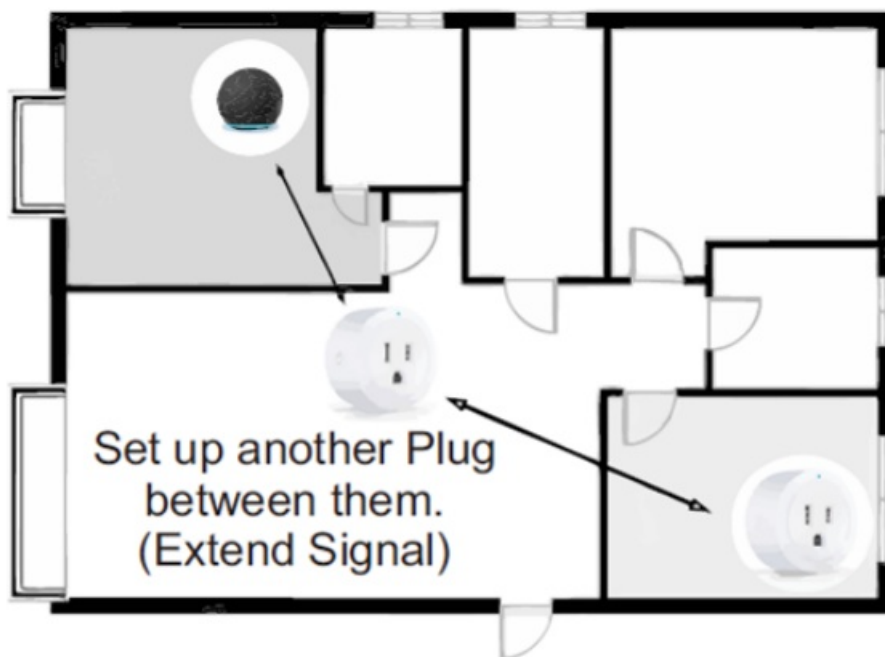


Getting to know Mesh function

- Solve disconnection with the mesh



When the plug you have set is disconnected.



You can set up another plug between the plug and Alexa echo, and the disconnected plug can return to normal.
Support 2.4Ghz and 5Ghz Wi-Fi via Alexa Echo

Support 2.4Ghz and 5Ghz Wi-Fi via Alexa Echo

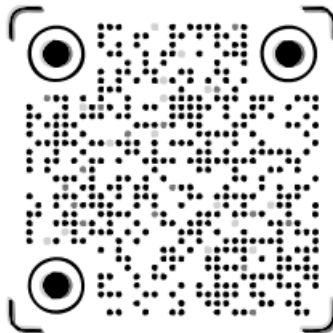


Give us your feedback



Find Us

Email: exioty.us@gmail.com



Video for product Titoki: Exioty iot



Documents / Resources

<p>Bluetooth Mesh Smart Plug Works with Alexa Echo Only (Alexa Echo Required)</p>	<p>ExloTy W-US002 Bluetooth Mesh Smart Plug [pdf] User Manual W-US002 Bluetooth Mesh Smart Plug, W-US002, Bluetooth Mesh Smart Plug, Mesh Smart Plug, Smart Plug, Plug</p>
---	--