



ExloTy EX-1 Remote Control Smart Plug User Guide

[Home](#) » [ExloTy](#) » ExloTy EX-1 Remote Control Smart Plug User Guide 

Contents

- [1 ExloTy EX-1 Remote Control Smart Plug](#)
- [2 Getting to know your Smart plug](#)
- [3 Getting to know voice command](#)
- [4 Getting to set up your Smart plug](#)
- [5 Getting to know Mesh function](#)
- [6 Give us your feedback](#)
- [7 FAQs](#)
- [8 Video-Introduction](#)
- [9 References](#)
- [10 Related Posts](#)



ExloTy EX-1 Remote Control Smart Plug



Getting to know your Smart plug

Specifications

- Power Supply: AC 100V-240V (50Hz-60Hz)
- Load Current: 10A or 16A
- Operation Temperature: -20° to 60 ° C/-4° to 122 °
- Bluetooth: Bluetooth 5.0

Step 1

- Plug in your Smart Plug
- Plug your Smart Plug into the power outlet blue LED will flash. (If the LED don't please press the button for 5 seconds until the LED flash)

Step 2

Set up your Smart Plug with one voice command

- Before setting up your Smart Plug make sure Alexa Echo is online.
- After ensuring the plug LED flash, you say: "Alexa, Discover Devices." to Alexa Echo.
- When the setting starts, the light of the Smart Plug will go out. And there will be once click sound
- In above a minute, Alexa Echo will discover the Smart Plug5. Alexa Echo will give you a voice notification, saying: "Found the Plug"

Getting to know voice command

How to operate voice control

You can speak voice commands to Alexa Echo to to control the smart plug

- "Alexa, turn on/off the plug."
- "Alexa, turn on/off the plug at 4:15 pm."

- “Alexa, turn on/off the plug after 30 minutes.”
- “Alexa, rename the plug to xxxxxx”.

Getting to set up your Smart plug

Download the Amazon Alexa app

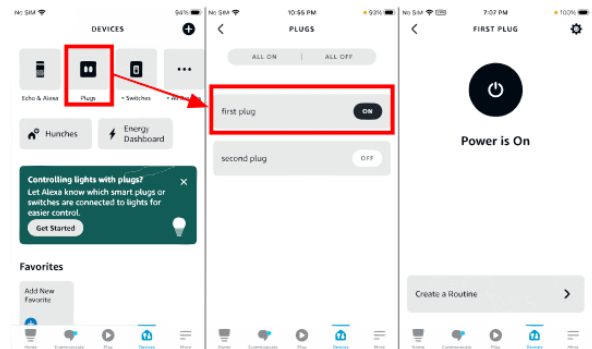
Download and install the latest version of the Alexa app from the app store.

Remote Control with app

You can control the smart plug through voice commands and “Amazon Alexa”App.

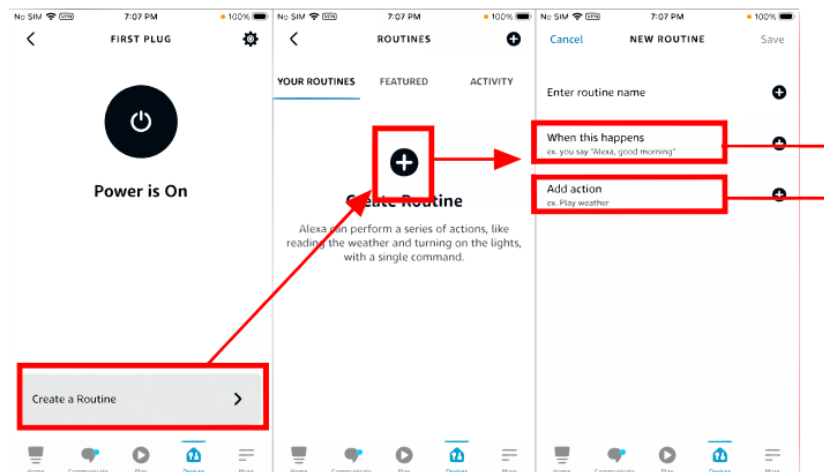


“Amazon Alexa”App

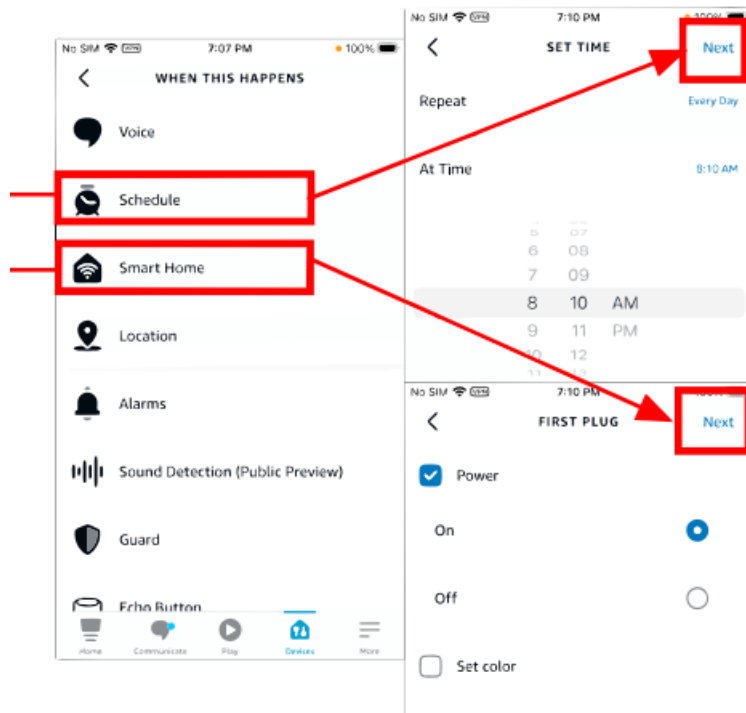


You can create a Routines in the AmazonAlexa”App

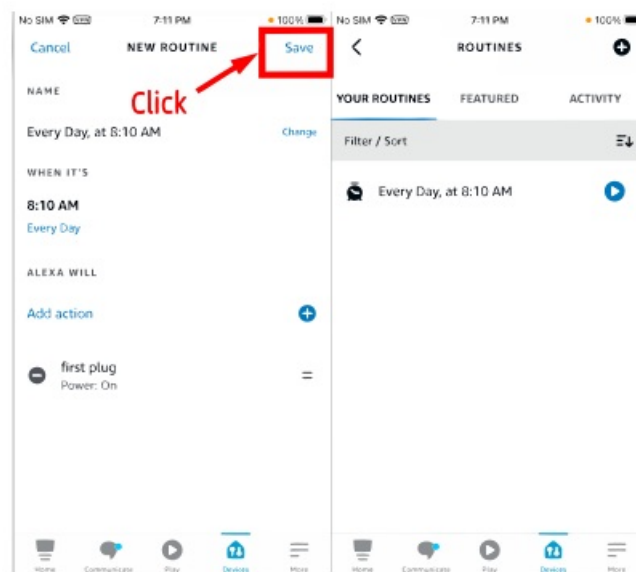
- Tap more at the bottom of the home page, then select Routines.
- Tap on the plus symbol at the top of the screen to make your own, or enable one of the pre-made Routines in the Featured Tab.



- “When this happens is” to “Schedule”, and set time. “Add action”to”Smart Home”, “,and select your number of plug.

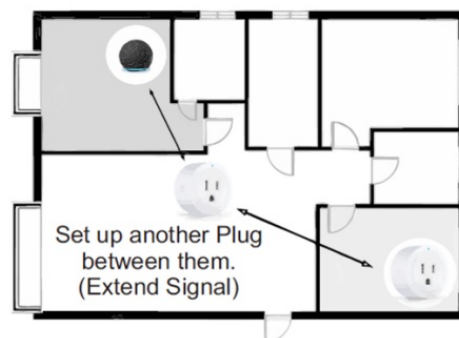
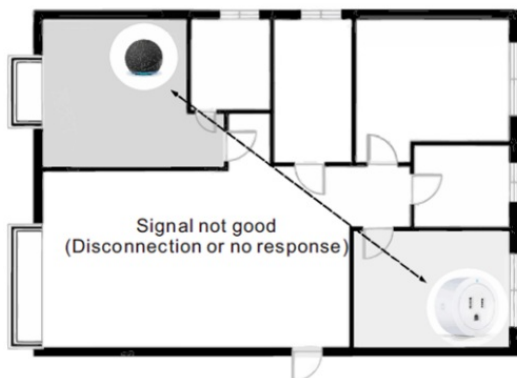


- Please remember to click the “Save” button!

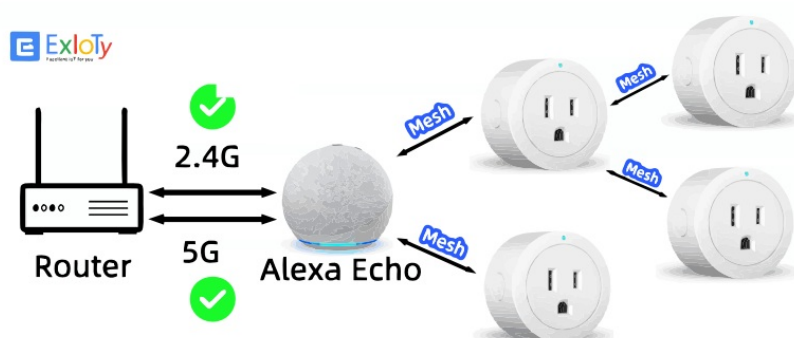


Getting to know Mesh function

Solve disconnection with the mesh



Support 2.4Ghz and 5Ghz Wi-Fi via Alexa Echo



Give us your feedback

Find Us

Email: exioty.us@gmail.com



Video for product

Tiktok: Exioty iot



FAQs

What is the ExloTy EX-1 Remote Control Smart Plug?

The ExloTy EX-1 Remote Control Smart Plug is a smart home device that allows users to remotely control and automate the power supply to connected electrical appliances or devices. It is designed to enhance convenience and energy efficiency in homes.

How does the ExloTy EX-1 Smart Plug work?

The ExloTy EX-1 Smart Plug connects to a Wi-Fi network, enabling users to control it remotely through a smartphone app or voice commands. It allows users to turn connected devices on or off, set schedules, and monitor energy usage.

Is the ExloTy EX-1 compatible with voice assistants?

Yes, the ExloTy EX-1 Smart Plug is often compatible with popular voice assistants such as Amazon Alexa and Google Assistant. Users can control connected devices using voice commands.

What devices can be connected to the ExloTy EX-1 Smart Plug?

The ExloTy EX-1 is versatile and can be used with various electrical appliances and devices, including lamps, fans, heaters, and other household gadgets that use a standard electrical outlet.

Is the ExloTy EX-1 easy to install?

Yes, the installation of the ExloTy EX-1 Smart Plug is typically straightforward. Users need to plug it into an electrical outlet, connect it to their Wi-Fi network using the companion app, and follow the setup instructions provided.

Can the ExloTy EX-1 be controlled remotely when away from home?

Yes, the ExloTy EX-1 allows remote control through the smartphone app, even when users are away from home. This feature adds convenience and flexibility to managing connected devices from anywhere with an internet connection.

Does the ExloTy EX-1 Smart Plug have energy monitoring capabilities?

Yes, some models of the ExloTy EX-1 come equipped with energy monitoring features, allowing users to track the power consumption of connected devices. This information can contribute to energy-saving practices.

Can multiple ExloTy EX-1 Smart Plugs be grouped together?

Yes, users can often create groups or scenes with multiple ExloTy EX-1 Smart Plugs. This allows for simultaneous control of several devices with a single command or schedule.

What security features does the ExloTy EX-1 offer?

The ExloTy EX-1 typically incorporates security features such as encryption protocols to secure the communication between the smart plug and the connected app. Users should follow best practices for securing their smart home devices.

Can the ExloTy EX-1 Smart Plug be used with smart home ecosystems?

Yes, the ExloTy EX-1 is often designed to work seamlessly with popular smart home ecosystems, allowing users to integrate it into their existing smart home setups and automation routines.

Is there a warranty for the ExloTy EX-1 Smart Plug?

Warranty coverage may vary by manufacturer and model. Users should check the product documentation or contact the manufacturer for specific details on warranty terms and conditions.

Can the ExloTy EX-1 be used with a 5GHz Wi-Fi network?

The ExloTy EX-1 Smart Plug is typically designed to work with 2.4GHz Wi-Fi networks. Users should check the product specifications to ensure compatibility with their home network.

Is technical support available for the ExloTy EX-1 Smart Plug?

Many manufacturers offer technical support and customer assistance for their products, including the ExloTy EX-1, to address setup, usage, and troubleshooting questions.

Can the ExloTy EX-1 be used with a timer function?

Yes, the ExloTy EX-1 Smart Plug often includes timer functions, allowing users to set specific schedules for turning devices on or off automatically. This feature adds to the convenience and energy-saving capabilities of the smart plug.

Is the ExloTy EX-1 compatible with third-party smart home platforms?

The ExloTy EX-1 is often designed to be compatible with popular third-party smart home platforms and ecosystems, providing users with flexibility in integrating it into their existing smart home setups.

Can the ExloTy EX-1 be used with appliances that have a physical switch?

Yes, the ExloTy EX-1 Smart Plug can be used with appliances that have a physical switch. Users can control the power supply to these devices remotely using the smart plug's app or voice commands.

Video-Introduction



[Download This PDF Link ExloTy EX-1 2023 Cb ExloTy EX-1 Plug User Guide Smart-Plug-User-Gudie.mp4](#)

References

- [User Manual](#)