



EXERGEN TAT-5000S-RS232-CORO Accurate Temperature with Gentle Forehead Scan User Manual

[Home](#) » [EXERGEN](#) » EXERGEN TAT-5000S-RS232-CORO Accurate Temperature with Gentle Forehead Scan User Manual 

Contents

- [1 EXERGEN TAT-5000S-RS232-CORO Accurate Temperature with Gentle Forehead Scan](#)
- [2 READ ALL INSTRUCTIONS BEFORE USING](#)
- [3 Introduction to Temporal Artery Thermometry](#)
- [4 Step Infant Temperature Measurement](#)
- [5 Step Adult Temperature Measurement](#)
- [6 FAQs](#)
- [7 Care and Maintenance](#)
- [8 Instructions for Fahrenheit or Celsius Conversion](#)
- [9 Repair](#)
- [10 Documents / Resources](#)
- [11 Related Posts](#)

EXERGEN
TemporalScanner™

EXERGEN TAT-5000S-RS232-CORO Accurate Temperature with Gentle Forehead Scan



READ ALL INSTRUCTIONS BEFORE USING

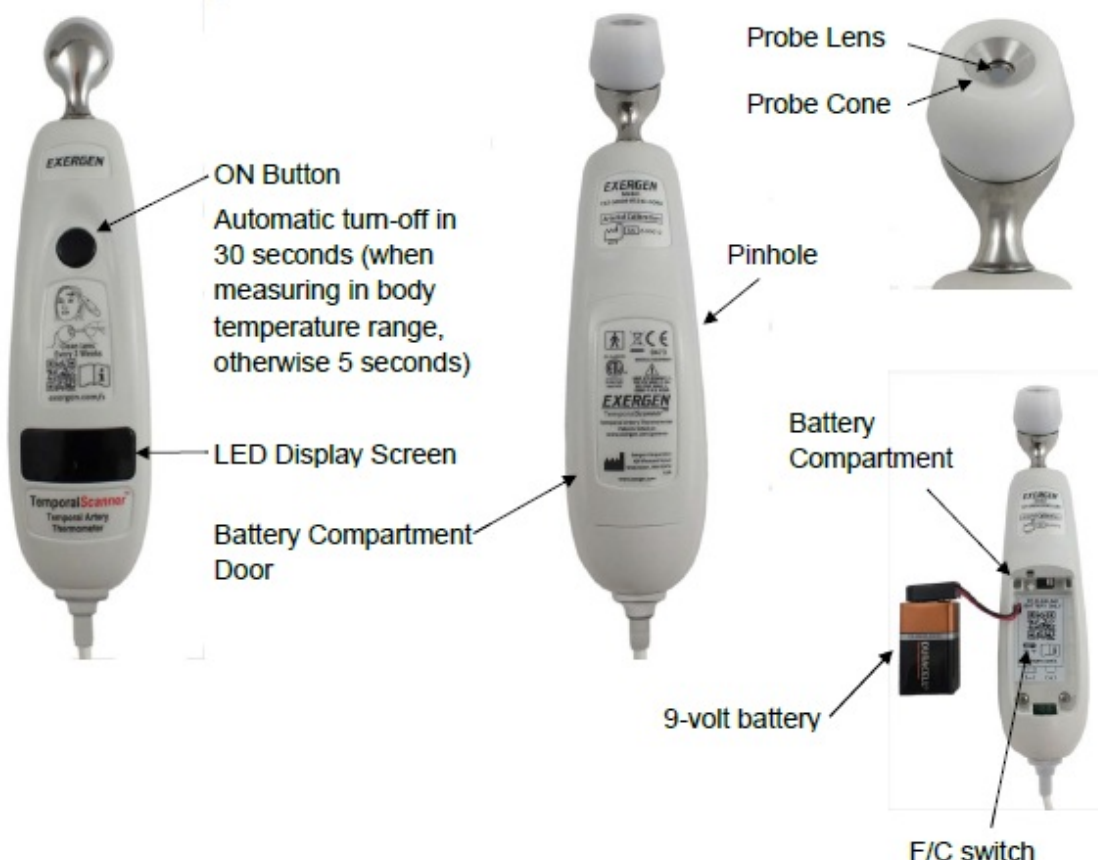
Intended Use: The Exergen TemporalScanner is a handheld infrared thermometer used by medical professionals for the intermittent measurement of human body temperature of people of all ages, by scanning the forehead skin over the temporal artery. Intended users are physicians, nurses, and nursing assistants at all levels who normally provide patient care. The thermometer provides a peak temperature reading from plural readings during the step of scanning. Electronic circuitry processes the measured peak temperature to provide a temperature display based on a model of heat balance relative to a detected arterial temperature, the electronic circuitry computing an internal temperature of the body as a function of ambient temperature (T_a) and sensed surface temperature. Training materials that are supplementary to this instruction manual are available at www.exergen.com/s, and recommended for first time users.

When using the product, basic safety precautions should always be followed, including the following:

- Use this product only for its intended use as described in this manual.
- Do not take temperature over scar tissue, open sores, or abrasions.
- The operating environmental temperature range for this product is 60° to 104°F (15.5° to 40°C).
- Always store and transport this thermometer in a clean, dry place where it will not become excessively cold (-4°F/-20°C), or hot (122°F/50°C). Relative humidity 93% Maximum non-condensing, atmospheric pressure 50 kPa to 106 kPa.
- The thermometer is not shockproof. Do not drop it or expose it to electrical shocks.
- Do not autoclave. Please note cleaning and sterilizing procedures in this manual.
- Do not use this thermometer if it is not working properly, if it has been exposed to temperature extremes, damaged, been subject to electrical shocks or immersed in water.
- There are no parts that you can service yourself except for the battery, which you should replace when low by following the instructions in this manual. For service, repair, or adjustments, return your thermometer to Exergen. Warning: No modification of this equipment is allowed.
- Never drop or insert any object into any opening, unless stated in this manual.

- If your thermometer is not used regularly, remove the battery to prevent possible damage due to chemical leakage.
- Follow the battery manufacturer's recommendations or your hospital policy for the disposal of used batteries.
- Not suitable for use in the presence of flammable anesthetic mixtures.
- If you have any additional questions regarding use or care of the thermometer, please see www.exergen.com or call customer service at (617) 923-9900.
- BF Applied Part indicates degree of patient protection against electrical shock. The product is internally battery powered and electrically isolated from earth.

Product Map of the Exergen Temporal Scanner TAT-5000S-RS232-CORO



Instructions for TAT-5000S-RS232-CORO

Instruction for use of TAT-5000S-RS232-CORO with GE Corometrics Maternal/Fetal Monitor (selected models only. Consult your GE Corometrics Maternal/Fetal Monitor User Manual.) The TAT-5000S-RS232-CORO is permanently attached to the adapter cable with the RJ11 modular plug, via a D-sub connection. The adapter cable should not be removed under any circumstance. Do not touch the patient and the D-sub connector simultaneously.

1. Connect the RJ11 modular plug into the back of the Corometrics monitor (Consult your GE Corometrics Maternal/Fetal Monitor User Manual to determine which modular jack to use).
2. Use the TAT-5000S-RS232-CORO as described. The temperature information will be sent to the monitor automatically and appear on the printout (provided the printing function is enabled). The temperature will also appear on the display of the monitor. Consult your GE Corometrics Maternal/Fetal monitor for proper software setup.



3. Error messages (HI, LO, HI A, LO A, bAtt and Err) that appear on the TAT-5000S-RS232-CORO LED display will not appear on the Corometrics monitor.
4. Note: The RJ11 connector is not for connection to a phone!



Introduction to Temporal Artery Thermometry

Temporal artery thermometry (TAT) is a unique method of temperature assessment, using infrared technology to detect the heat naturally emitting from the skin surface. In addition, and of key importance, this method incorporates a patented arterial heat balance system to automatically account for the effects of ambient temperature on the skin.

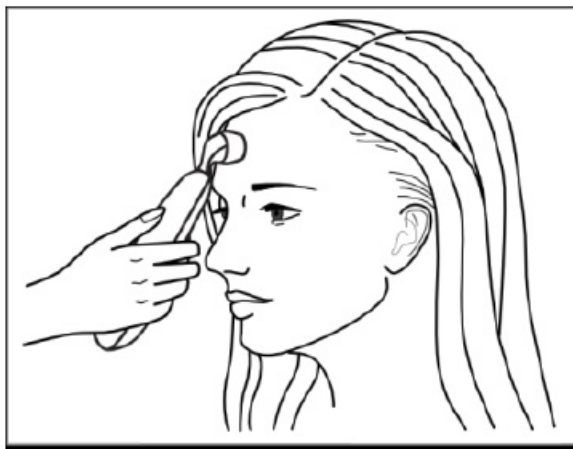
This method of temperature assessment has been shown to improve results and reduce costs by non-invasively measuring body temperature with a degree of clinical accuracy unachievable with any other thermometry method.

Before Using, Familiarize Yourself with the Instrument

- **To Scan:** Depress the red button. The instrument will continually scan for the highest temperature (peak) as long as the button is depressed.
- **Clicking:** Each fast click indicates a rise to a higher temperature, similar to a radar detector. Slow clicking indicates that the instrument is still scanning, but not finding any higher temperature.
- **To Retain or Lock Reading:** The reading will remain on the display for 30 seconds after button is released. If measuring room temperature, the temperature will remain on the display for only 5 seconds.
- **To Restart:** Depress the button to restart. It is not necessary to wait until the display is clear, the thermometer will immediately begin a new scan each time the button is depressed.

Basics of Using the TemporalScanner

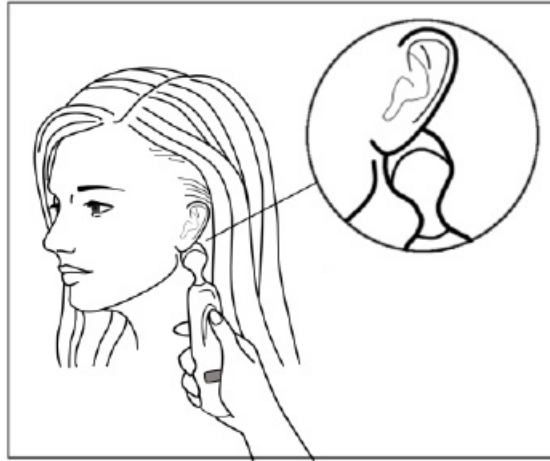
1. Measure only the exposed side. Brush hair aside if covering the Temporal Artery area. With probe flush on the center of forehead, depress red button, keep depressed...



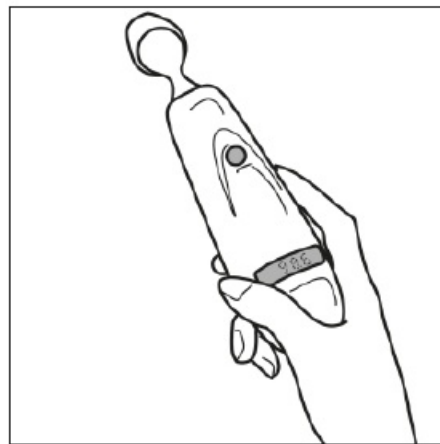
2. Slowly slide probe straight across forehead to the hair line, not down side of face.



3. Brush hair away if covering ear. Keeping the button depressed, lift probe from forehead, touch behind ear halfway down the mastoid process and slide down to the soft depression behind the earlobe.



4. Release the button, read, and record temperature.



Alternate sites when temporal artery or behind ear are unavailable:

- Femoral artery: slowly slide the probe across groin.
- Lateral thoracic artery: slowly scan side-to-side in the area midway between the axilla and the nipple.

Step Infant Temperature Measurement

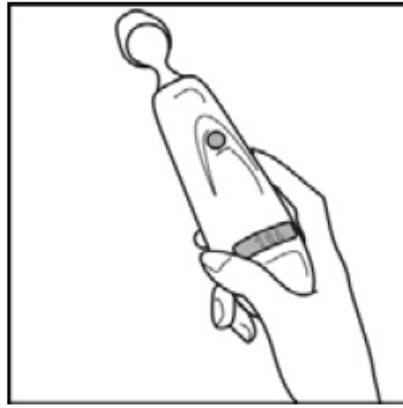
1. Step 1

Place probe flush on center of forehead and depress button. Keeping button depressed, slowly slide probe mid-line across forehead to the hair line.



2. Step 2

Release button remove from head and read.



How to improve the accuracy of your measurements on infants

- The preferred site is the temporal artery area. Unless visibly diaphoretic, one measurement here is typically all that is required
- If the temporal artery is covered, then the area behind the ear, if exposed, can be an alternate site.



- Measure straight across the forehead and not down side of face. At mid-line, the temporal artery is about 2 mm below the surface, but can go deeply below the surface on the side of the face.
- Brush the hair aside if covering the area to be measured. Measurement site must be exposed.



Step Adult Temperature Measurement

1. Step 1

Slide across forehead. Place probe flush on center of forehead and depress button. Keeping button depressed slowly slide probe mid-line across forehead to the hair line.



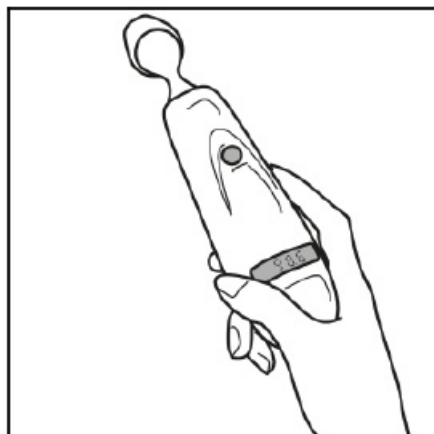
2. Step 2

Slide behind ear. Keeping button depressed, lift probe from forehead, touch behind ear halfway down the mastoid process and slide down to the soft depression behind the earlobe.



3. Step 3

Release button and read.



How to improve the accuracy of your measurements on adults

- Measure only the up-side on a patient in a lateral position. The down-side will be insulated preventing the heat from dissipating, resulting in falsely high readings.
- Think of a sweatband. Measure straight across the forehead and not down the side of the face. At mid-line, the temporal artery is about 2 mm below the surface, but can go deeply below the surface on the side of the face.
- Measure exposed skin. Brush the hair and bangs aside if covering the area to be measured.



FAQs

How does the temperature from a temporal scanner relate to core temperature?

Temporal artery temperature is considered a core temperature because it has been demonstrated as accurate as the temperature measured by a pulmonary artery and esophageal catheter, and as accurate as a rectal temperature on a stable patient. Rule of thumb: Rectal temperature is about 1°F (0.5°C) higher than an oral temperature and 2°F (1°C) higher than an axillary temperature. It will be easy to remember if you think of core temperature as a rectal temperature, and apply the same protocol you would use for a rectal temperature.

If your thermometer is marked Arterial/Oral and has a serial number beginning with "O" (standard model start with "A"), it is programmed to compute the normal average cooling effect at the mouth, and automatically reduces the higher arterial temperature by that amount. This calibration allows the hospital to maintain existing protocols for fever workups based on oral temperature, and results in a reading consistent with the 98.6°F (37°C) mean normal oral temperature, in the range of 96.6 – 99.5°F (35.9 – 37.5°C) you now see.

What should I do if I get an abnormally high or low reading, how do I confirm my reading?

- Repeat the reading with the same Temporal Scanner; a correct reading will be reproducible.
- Repeat the reading with another Temporal Scanner. Two Temporal Scanners with the same reading will confirm the reading.
-
- Sequential readings on the same patient in rapid succession will cool the skin; it is best to wait about 30 seconds for the skin to recover from the cold probe. Possible causes of abnormal readings.

Type of abnormal Temperature	Possible cause	Helpful hint
Abnormally low Temperature	Dirty Lens	Clean lens of scanner every two weeks.
	Releasing the button before finished measuring	Release the button after finished measuring.
	Measuring when an ice pack or wet compress is on the forehead	Remove ice pack or wet compress, wait 2 minutes, and re- take temperature.
	Measuring a completely diaphoretic patient	Complete diaphoresis includes diaphoresis of area behind the ear and suggests that the temperature is rapidly dropping. Use an alternative method of temperature measurement in these cases until the patient is dry and the temporal artery measurement can be repeated.
	Improperly scanning down the side of the face	Scan straight across forehead. The temporal artery is closest to skin in that area.
Abnormally high temperature	Anything covering the area to be measured would insulate and prevent heat from dissipating, resulting in false high readings.	Confirm measurement site has not recently been in contact with heat insulators such as hats, blankets, and hair. Scan the area not covered or wait about 30 seconds for the previously covered area to equilibrate to the environment.

DISPLAY DIAGNOSTICS CHART

The following chart summarizes the conditions that may occur while the TemporalScanner is in use, and the associated indications:

Condition	Display	Range
High Target	HI	>110 oF (43 oC)
Low Target	LO	<61 oF (16 oC)
High Ambient	HI A	>104 oF (40 oC)
Low Ambient	LO A	<60 oF (16 oC)
Low Battery	bAtt	
Dead Battery	blank display	
Processing Error	Err	Restart. Return to Exergen for repair if error message persists.
Scanning (Normal Operation)	SCAN	

Care and Maintenance

- **Battery:** A standard alkaline 9V battery provides approximately 15,000 readings. ** To replace, insert the end of a bent paper clip into the pinhole on the side of the unit to release the battery compartment door. Disconnect the old battery and replace with a new one in the same location. Replace the cover. See pictures below. Use only high quality alkaline batteries.
- **Handling:** The TemporalScanner is designed and built to industrial durability standards in order to provide long and trouble-free service. However, it is also a high precision optical instrument, and should be accorded the same degree of care in handling as you would provide other precision optical instruments, such as cameras or otoscopes.
- **Cleaning the case:** The TemporalScanner case can be wiped down using a cloth dampened with 70% isopropyl alcohol.
- **Cleaning the sensor lens:** With normal use, the only maintenance required is to keep the lens on the end of the probe clean. It is made of special mirror-like, silicon infrared-transmitting material. However, dirt, greasy films or moisture on the lens will interfere with the passage of infrared heat and affect the accuracy of the instrument. Regularly clean the lens with a cotton swab dampened with an alcohol wipe. Use only light force for cleaning, to avoid damaging the lens. Water can be used to remove any residual film left by the alcohol. Do not use bleach or other cleaning solutions on the sensor lens. Use 70% isopropyl alcohol.
- **Disinfection:** The industrial grade housing and design of the electronic components allow for completely safe disinfecting with 70% isopropyl alcohol. Do not immerse. Do not autoclave.
- **Calibration:** Factory calibration data is installed via a computer which communicates with the TemporalScanner's microprocessor. The instrument automatically self-calibrates each time it is turned on using this data, and will never require recalibration. If readings are not correct, the instrument should be returned for repair. See page 11 for the return process.



Instructions for Fahrenheit or Celsius Conversion

The TemporalScanner can be used in either °F or °C. The TemporalScanner will come preset based on your preference at the time of purchase. To convert from one scale to the other, the only tools necessary are a paper clip and the tip of a small screwdriver.

For °F/°C Conversion:

- Insert the end of a bent paper clip into the pinhole on the side to release and remove the cover. Remove the battery from the compartment. See pictures above.
- Locate the switch, and with the tip of a screwdriver, slide left or right to the opposite position.
- Remove the screwdriver.

Remove the
the opposite
F/C Switch



Guidance and manufacturer's declaration-electromagnetic emissions

The infrared forehead thermometer model TAT 5000S series is intended for use in the electromagnetic environment specified below. The user of the TAT 5000S series should assure that it is used in such an environment.

Emissions test	Compliance	Electromagnetic environment-guidance
RF emissions CISPR 11	Group 1	The TAT 5000S series thermometer uses no RF energy therefore any emissions are unlikely to cause any interference in nearby electronic equipment
RF emissions CISPR 11	Class B	The TAT 5000S series thermometer is suitable for use by a health care professional in a typical health care environment.
Harmonic emissions	Not applicable	
Voltage fluctuations	Not applicable	

Guidance and manufacturer's declaration-electromagnetic immunity

The TAT 5000S series thermometer is intended for use in the electromagnetic environment specified below. The user of the TAT-5000S series should assure that it is used in such an environment.

Immunity test	IEC 60601 test level	Compliance level	Electromagnetic environment-guidance
---------------	----------------------	------------------	--------------------------------------

Conducted RF I EC 61000-4-3	3Vrms 150 kHz to 80 M Hz	Not applicable	<p>Portable and mobile RF communications equipment should be used no closer to any part of the TAT 5000 S series including cables if applicable, than the recommended separation distance calculated from the equation applicable to the frequency of the transmitter .</p> <p>Recommended separation distance</p> <p>$d=1,2 \cdot P^{1/2}$</p> <p>$d=1,2 \cdot P^{1/2}$ 80 MHz to 800MHz $d=1,2 \cdot P^{1/2}$ 800MHz to 2,5 GHz</p> <p>Where P is the maximum output power rating of the transmitter in watts (W) according to the transmitter manufacturer and d is the recommended separation distance in meters(m).</p> <p>Field strength from the fixer RF transmitters, as determined by an electromagnetic site survey, a. should be less than the compliance level in each frequency range and b. interference may occur in the vicinity of equipment with the following symbol:</p>
Radiated RF IEC 61000-4-3	3V/m 80 MHz to 2,5 G Hz	3V/m	

- **Note 1** At 80MHz and 800MHz, the higher range applies.
- **Note 2** These guidelines may not apply in all situations. Electromagnetic propagation is affected by absorption and reflection from structures, objects, and people.
 - Field strengths from fixed transmitter, such as base stations for radio (cellular/cordless) telephones and land mobile radios, amateur radio, AM and FM radio broadcast and TV broadcast cannot be predicted theoretically with accuracy. To assess the electromagnetic environment due to fixed RF transmitters, an electromagnetic site survey should be considered. If the measured field strengths in the location in which the TAT 5000S series thermometer is used exceeds the applicable RF compliance level above, the TAT 5000S series thermometer should be observed to verify normal operation. If abnormal performance is observed, additional measures may be necessary, such as reorienting or relocating the TAT 5000S.
 - Over the frequency range 150 kHz to 80 MHz, field strengths should be less than 3V/m.
 - Portable and mobile RF communications equipment can affect performance.
 - ESD compliance has been verified by testing. Intertek Report Number 102297230BOX-001.

Guidance and manufacturer's declaration-electromagnetic immunity (cont)

The TAT 5000S series thermometer is intended for use in the electromagnetic environment specified below. The user of the TAT 5000S series should assure that it is used in such an environment.

Immunity test	IEC 60601 test level	Compliance level	Electromagnetic environment-guidance
Electrostatic discharge (ESD) IEC61000-4-2	6KV contact 8KV air	6KV contact 8KV air	Floors should be wood, concrete or ceramic tile. If floors are covered with synthetic material, the relative humidity should be at least 30%.
Electrical fast transient/ burst IEC 61000-4-4	2kV for power supply lines 1kV for input output lines	Not applicable	Mains power quality should be that of a typical health care environment.
Surge IEC 61000-4-5	1kV line(s) to line(s) 2kV line(s) to earth	Not applicable	Mains power quality should be that of a typical health care environment.

	<5% UT (>95% dip in UT) for 0,5 cycle		Mains power is not applicable. The TAT 5000S series is powered by battery and battery only.
Interruptions and voltage variations on power supply Input lines IEC 61000-4-11	40% UT (60% dip in UT) for 5 cycles 70% UT (30% dip in UT) for 25 cycles	Not applicable	
	< 5% UT (>95% dip in UT) for 5 sec.		
Power frequency			
(50/60 Hz) magnetic field	3A/m	3A/m	Power frequency magnetic fields should be at the level characteristic of a typical location in a typical health care environment.
IEC 61000-4-8			
Note UT is the a.c. mains voltage prior to the application of the test level			

Recommended separation distances between Portable and mobile RF communication equipment and the TAT 5000S Series

The TAT 5000S series forehead thermometer is intended for use in an electromagnetic environment in which radiated RF disturbances are controlled or the user of the TAT 5000S series thermometer can help prevent electromagnetic interference by maintaining a minimum distance between portable and mobile RF communications equipment (transmitters) and the TAT 5000S series thermometer as recommended below, according to the maximum output power of the communications equipment.

Rated maximum output power of transmitter (W)	Separation distance according to frequency of transmitter m		
	150 KHz to 80 MHz d=1,2 P1/2	80 MHz to 800 MHz d=1,2 P1/2	800 MHz to 2,5 GHz D=2.3 P1/2
0,01	0,12	0,12	0,23
0,1	0,38	0,38	0,73
1	1,2	1,2	2,3
10	3,8	3,8	7,3
100	12	12	23

For transmitters rated at a maximum output power not listed above, the recommended separation distance in meters (m) can be estimated using the equation applicable to the frequency of the transmitter, where P is the maximum output power rating of the transmitter in watts (W) according to the transmitter manufacturer.

- **Note 1** At 80 MHz and 800 MHz the separation distance for the higher frequency range applies.
- **Note 2** These guidelines may not apply in all situations. Electromagnetic propagation is affected by absorption and reflection from structures, objects and people.

Specifications	TAT-5000S-RS232-CORO
Clinical Accuracy	± 0.2°F or 0.1°C Per ASTM E1112
Temperature Range	61 to 110°F (16 to 43°C) ***
Arterial Heat Balance Range for Body Temperature *	94 to 110°F (34.5 to 43°C)
Operating Environment	60 to 104°F (16 to 40°C)
Resolution	0.1° F or C
Response Time	~0.04 seconds
Battery Life	15,000 readings **
Time Displayed On Screen	30 seconds
Size	Instrument : 7.9" X 1.8" X 1.6" (20 cm X 4.6 cm X 4.1 cm) Cable : 12' (3.7 m)
Weight	0.86 lb (390 g)
EMI and RFI Protection	Stainless steel enclosure on upper part inside of casing
Storage Conditions	-4 to 122°F (-20 to 50°C)
Display Type and Size	Large bright LED's
Construction Method	<ul style="list-style-type: none"> · Industrial duty impact resistant casing · Chemically resistant casing and lens · Hermetically sealed sensing system · Stainless steel probe
Warranty	Lifetime
*Automatically applied when temperature is within normal body temperature range, otherwise reads surface temperature.	** Approximate number of readings when scanning for 5 seconds and reading the temperature display for 3 seconds before turning thermometer off.
*** 16 C rounded up from 15.5 C.	

*Automatically applied when temperature is within normal body temperature range, otherwise reads surface temperature. 16 C rounded up from 15.5 C.

** Approximate number of readings when scanning for 5 seconds and reading the temperature display for 3 seconds before turning thermometer off.

Repair

If repair is required:

- Contact Exergen at (617) 923-9900 or repairs@exergen.com for a Return Materials Authorization (RMA) Number and method for no-cost shipping.
- Mark the RMA number on the outside of your package and packing slips.
- Include a description of the fault if possible.
- Send the instrument to:
 - Exergen Corporation
 - 400 Pleasant Street
 - Watertown, MA 02472 USA
- Include the address the instrument should be returned to.


	Symbol for Date of Manufacture
	Symbol for Manufacturer
	Degree of Protection Against Electrical Shock Defibrillation-Proof Type BF Applied Part, Battery Operated
	Attention, Consult Accompanying Documents
	Consult Instructions for Use
	“On” (only for part of Equipment)
	Do not throw this device away in the trash, contact Exergen Corp. for disposal and recycling instructions.
IPX0	Ordinary Equipment
5001979	MEDICAL EQUIPMENT WITH RESPECT TO ELECTRICAL SHOCK FIRE AND MECHANICAL HAZARDS ONLY CONFORMS TO AAMI STD E6061-1, ISO STD 80601-2-56, IEC STDS 60601-1, 60601-1-6 & 62366

QHI Group LTD Talisman House Coldharbour Lane Harpenden Hertfordshire AL5 4UT UK

EXERGEN CORPORATION

- 400 PLEASANT STREET
- WATERTOWN, MA 02472
- PH (617) 923-9900 www.exergen.com

Documents / Resources

	<p>EXERGEN TAT-5000S-RS232-CORO Accurate Temperature with Gentle Forehead Scan [pdf] User Manual</p> <p>TAT-5000S-RS232-CORO Accurate Temperature with Gentle Forehead Scan, TAT-5000S-RS232-CORO, Accurate Temperature with Gentle Forehead Scan</p>
---	---

[Manuals+.](#)