



EVVA Xesar Electronic Locking Device Instruction Manual

[Home](#) » [EVVA](#) » EVVA Xesar Electronic Locking Device Instruction Manual 

Contents

- [1 EVVA Xesar Electronic Locking Device](#)
- [2 Product Information](#)
- [3 Product Usage Instructions](#)
- [4 Product INSTRUCTIONS](#)
- [5 WHATS IN THE BOX](#)
- [6 REQUIRED TOOLS](#)
- [7 SAFETY INSTRUCTIONS](#)
- [8 DIMENSIONS](#)
- [9 INSTRUCTIONS](#)
- [10 HOW TO FIX](#)
- [11 Documents / Resources](#)
 - [11.1 References](#)
- [12 Related Posts](#)



EVVA Xesar Electronic Locking Device



Product Information

Product Name: E.X.DR.Z0

Brand: Xesar

Product Code: E.X.DR.Z0.U.80.EM.T1.LI

Product Description

The E.X.DR.Z0 is a high-quality product designed for secure access control. It is part of the Xesar brand, known for its advanced security solutions. This product offers reliable performance and ease of use.

Specifications

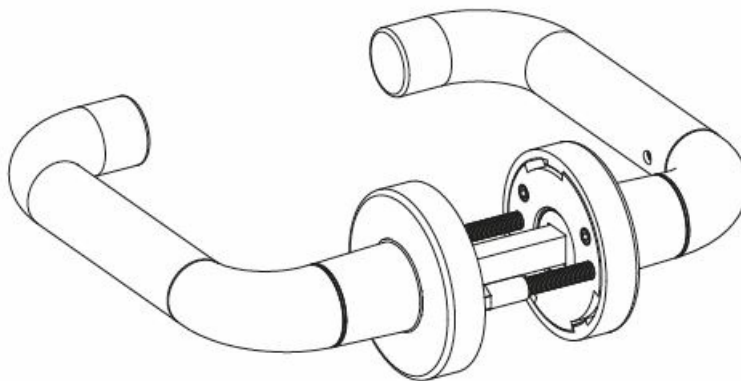
- Dimensions: 38 mm x 5 mm
- Maximum Torque: 4 Nm
- Compatibility: I.AN.MNT.X.DRZ0.SN | 23R1

Manufacturer Website: www.evva.com

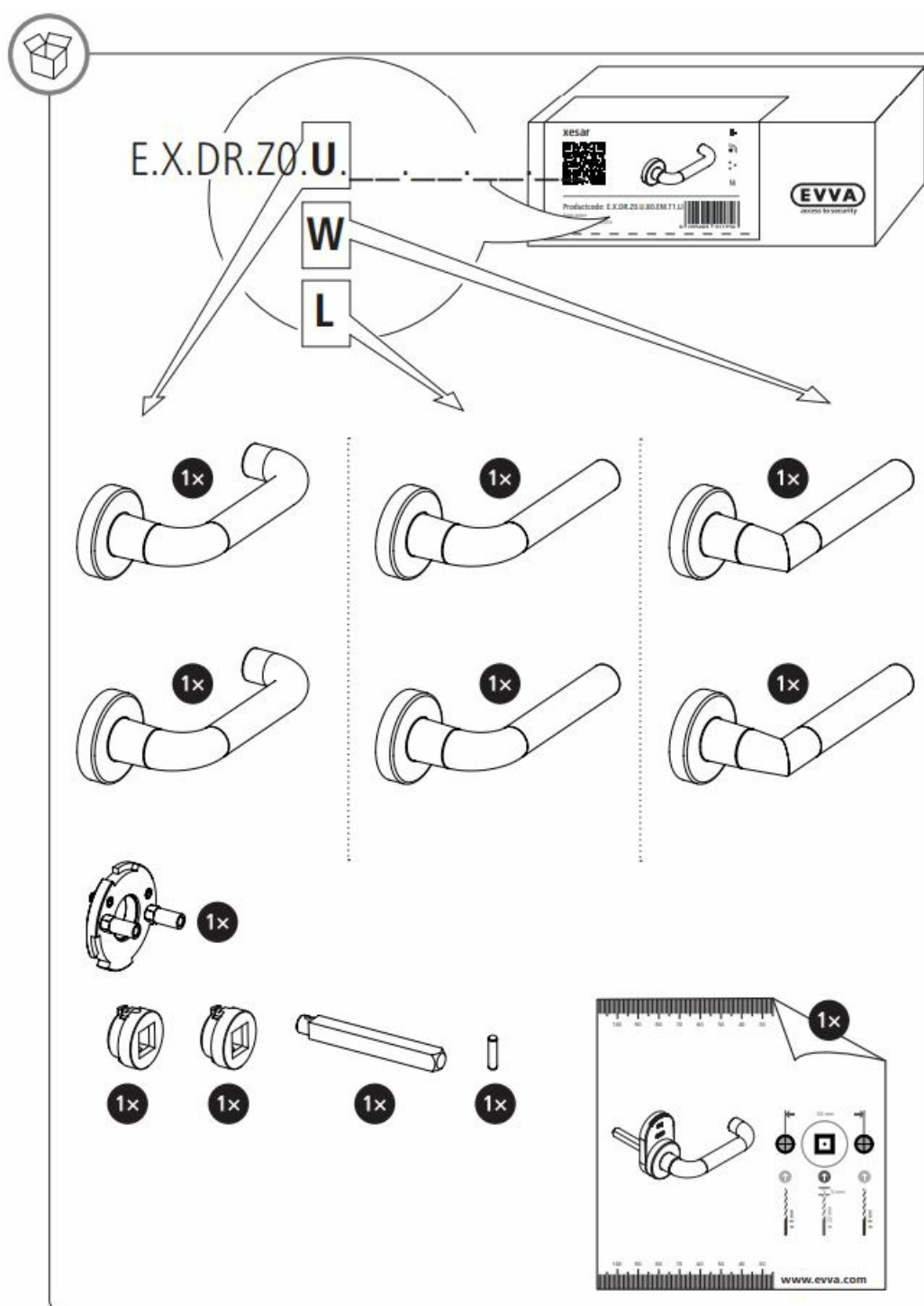
Product Usage Instructions

1. Ensure that the product code matches the intended use (E.X.DR.Z0.U.80.EM.T1.LI).
2. Refer to the provided dimensions (38 mm x 5 mm) for installation purposes.
3. Make sure not to exceed the maximum torque of 4 Nm during installation.
4. Check compatibility with the I.AN.MNT.X.DRZ0.SN | 23R1 system.
5. For further information and support, visit the manufacturer's website: www.evva.com

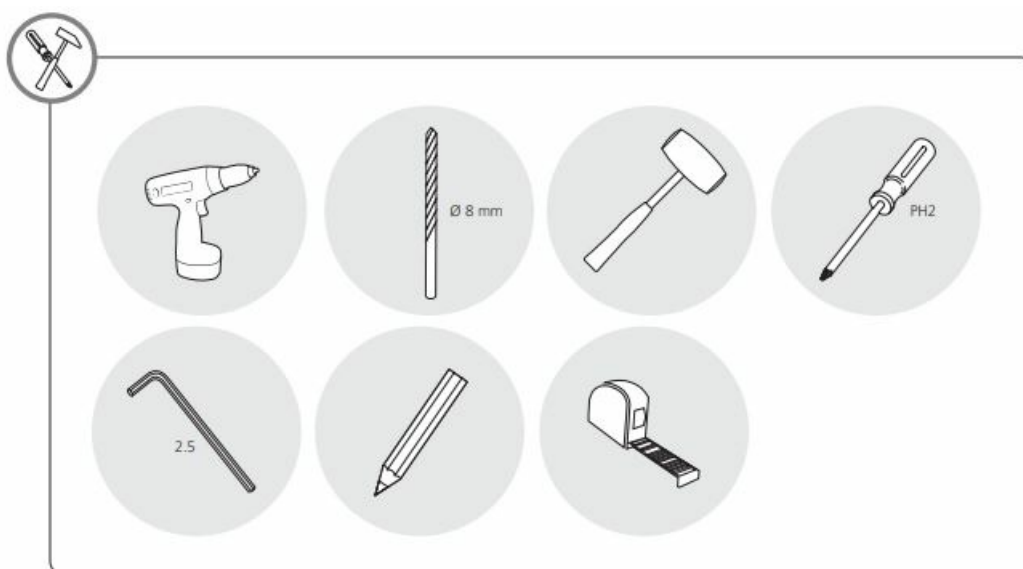
Product INSTRUCTIONS



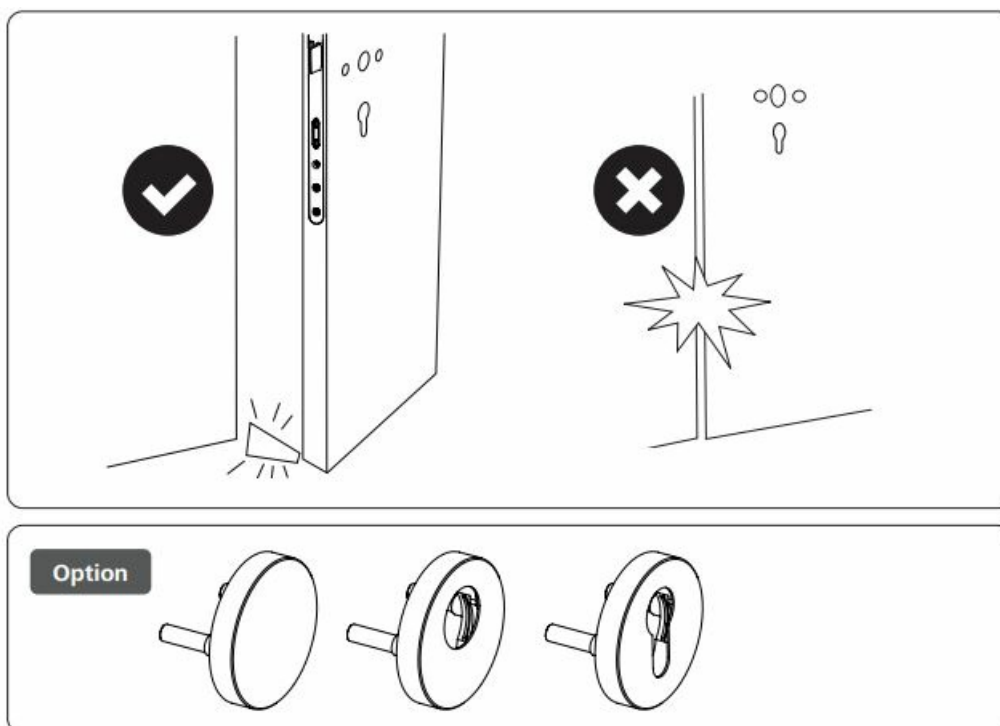
WHATS IN THE BOX



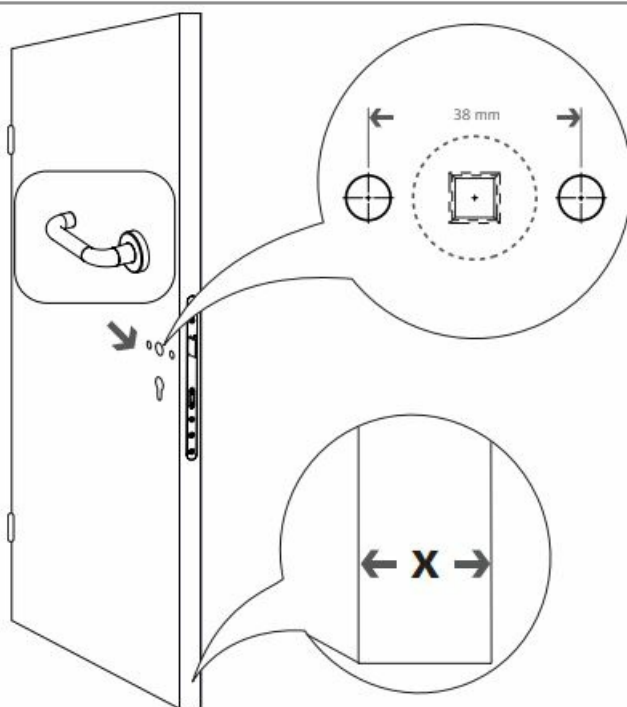
REQUIRED TOOLS



SAFETY INSTRUCTIONS



DIMENSIONS



x = 40–50 mm

2 x 40 mm >>



x = 50–60 mm

2 x 50 mm >>



x = 60–70 mm

2 x 60 mm >>



x = 70–80 mm

2 x 70 mm >>



x = 80–90 mm

2 x 80 mm >>

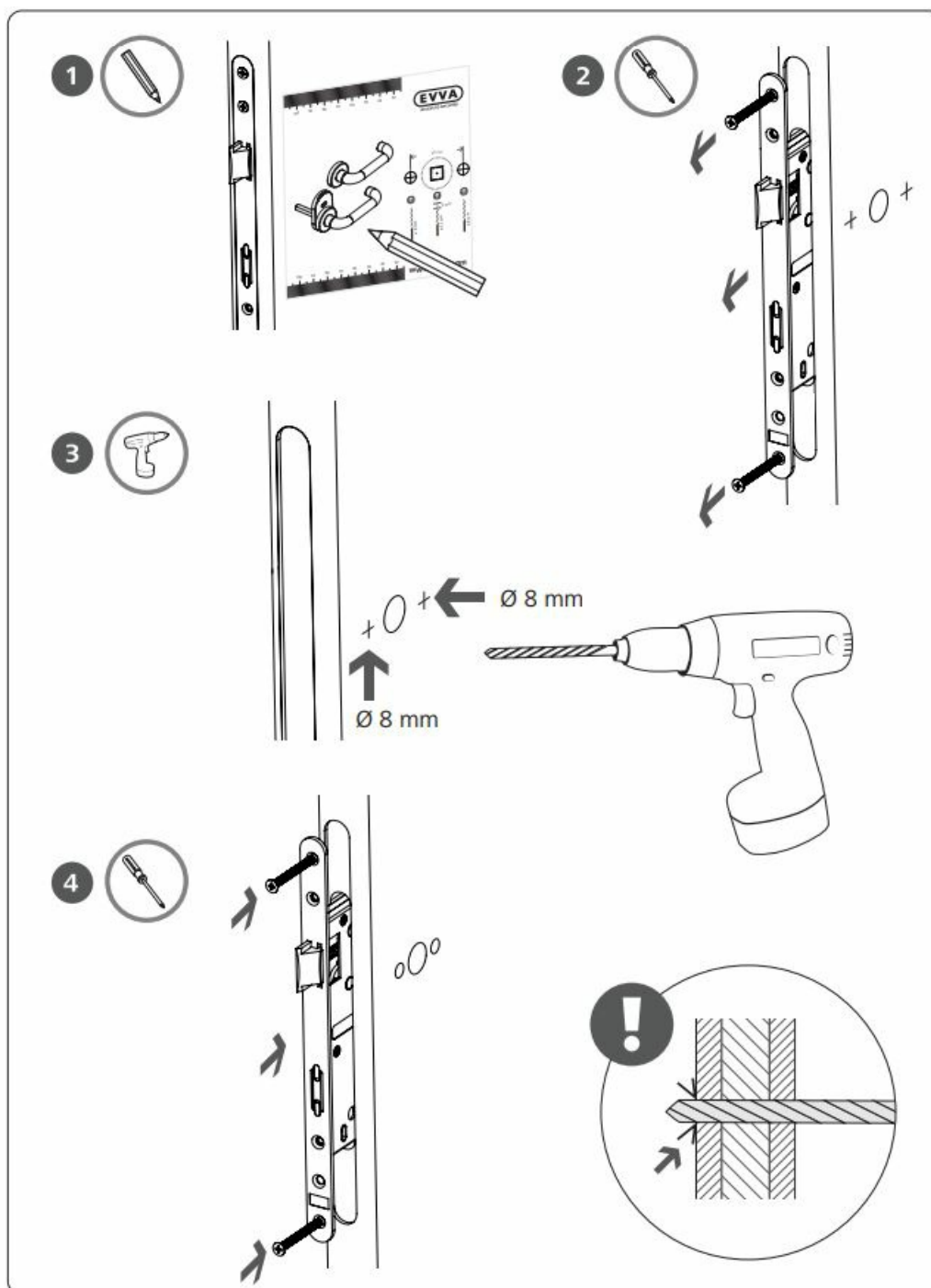


x = 90–100 mm

2 x 90 mm >>

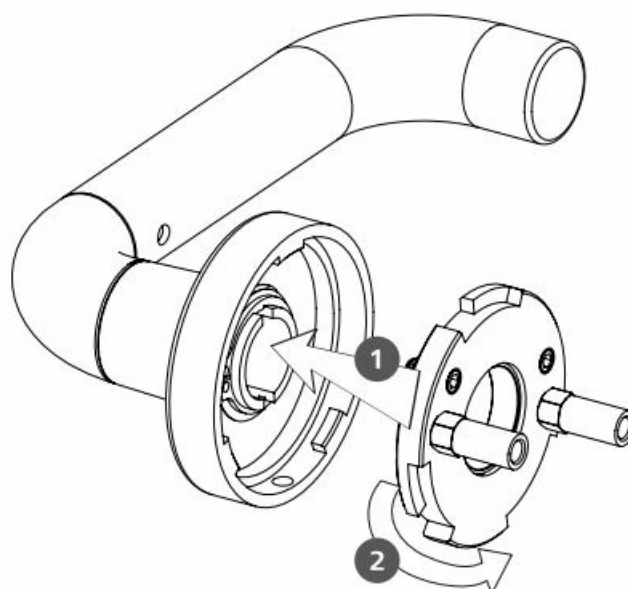


INSTRUCTIONS

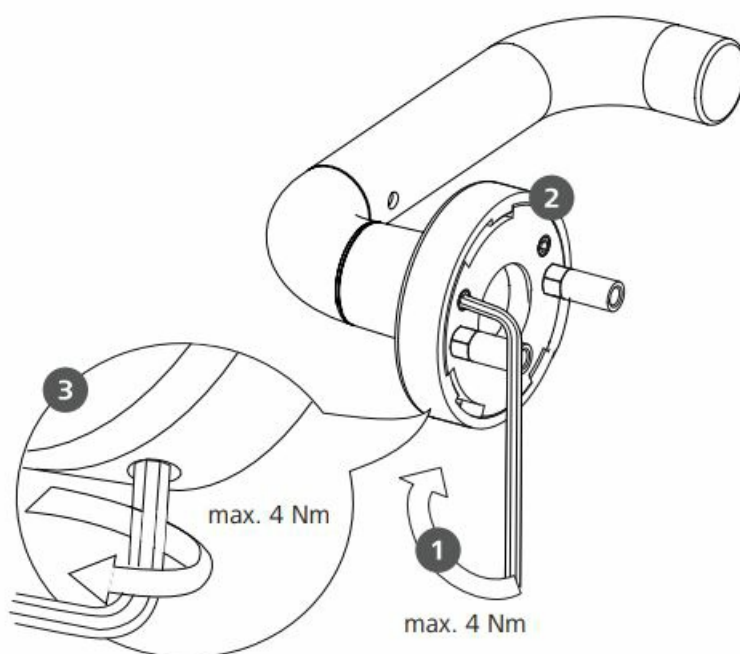


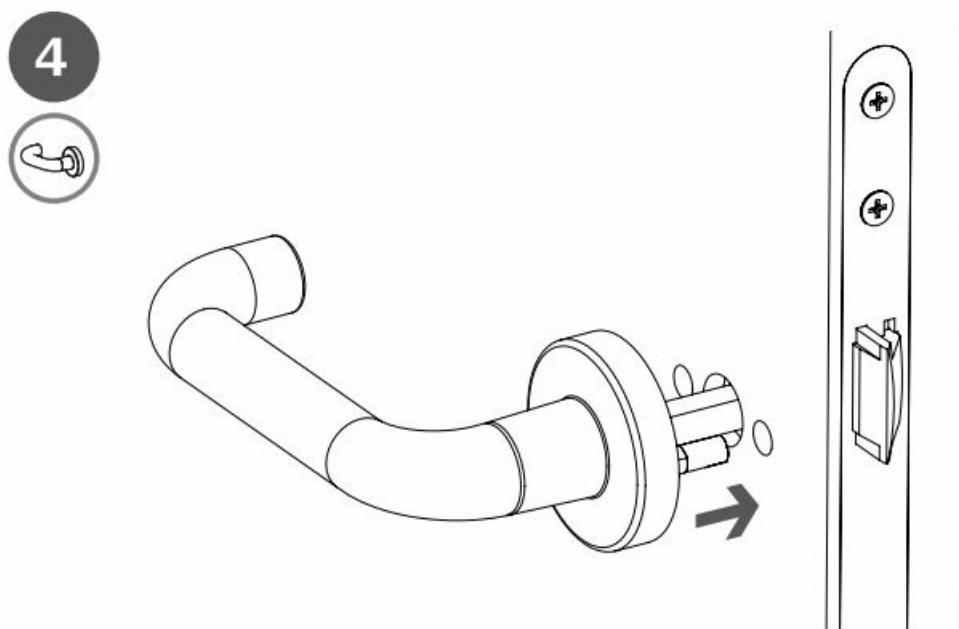
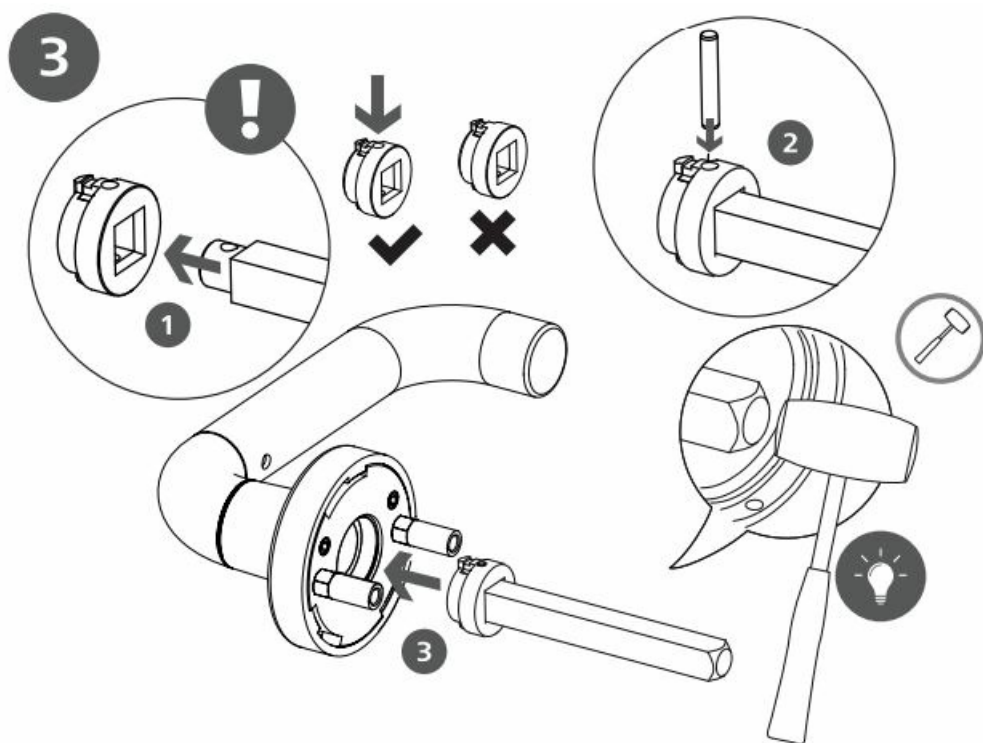
HOW TO FIX

1

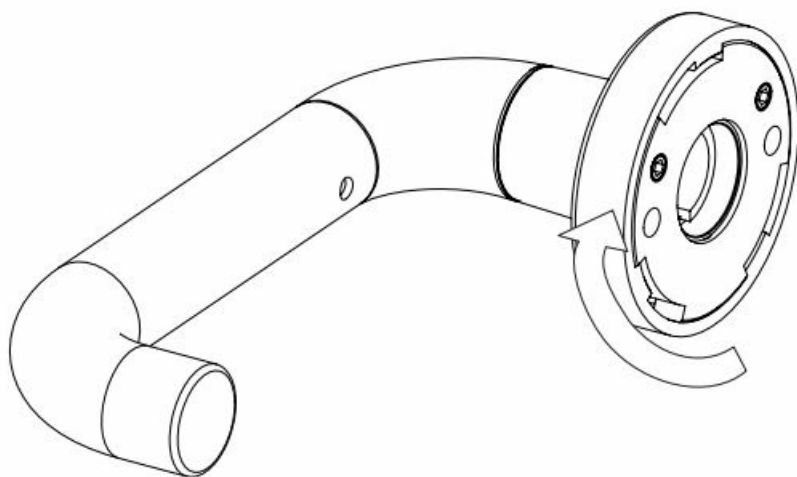


2

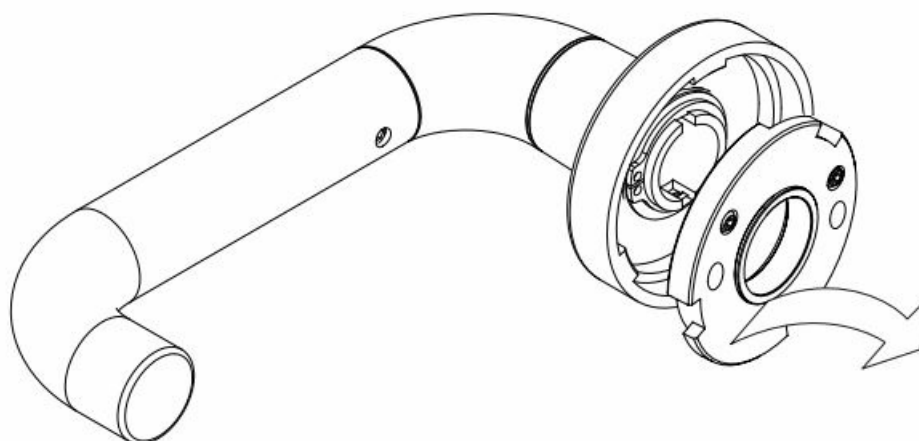




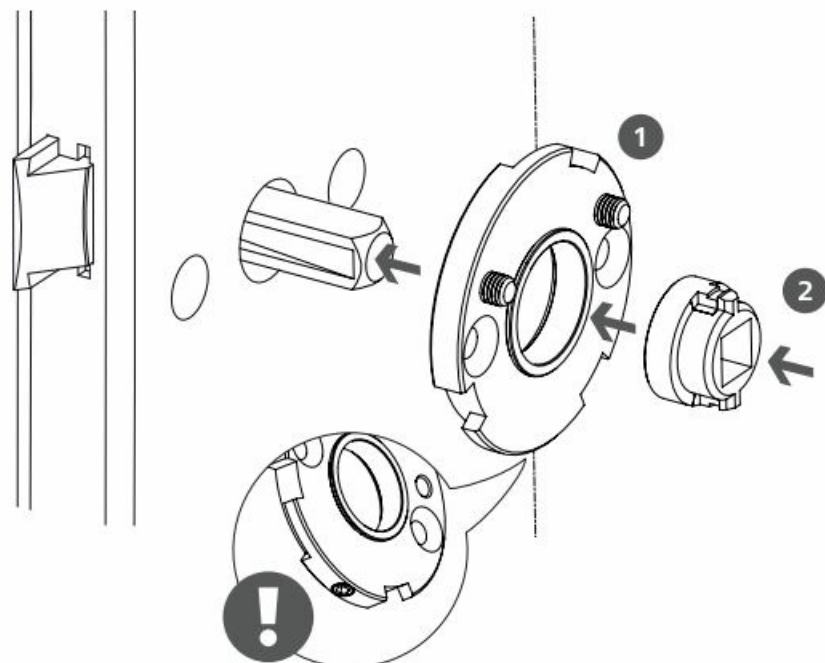
5



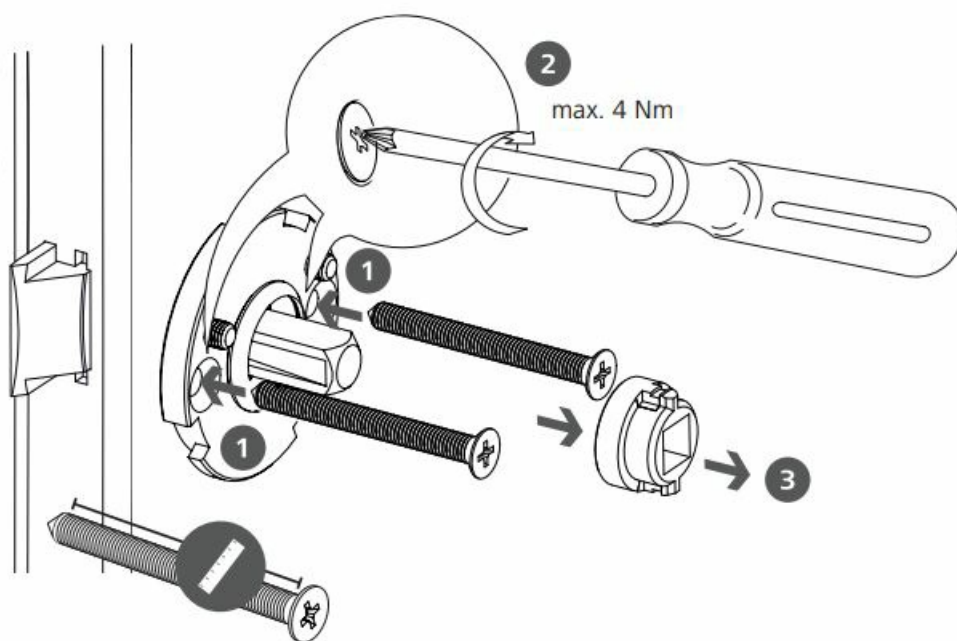
6



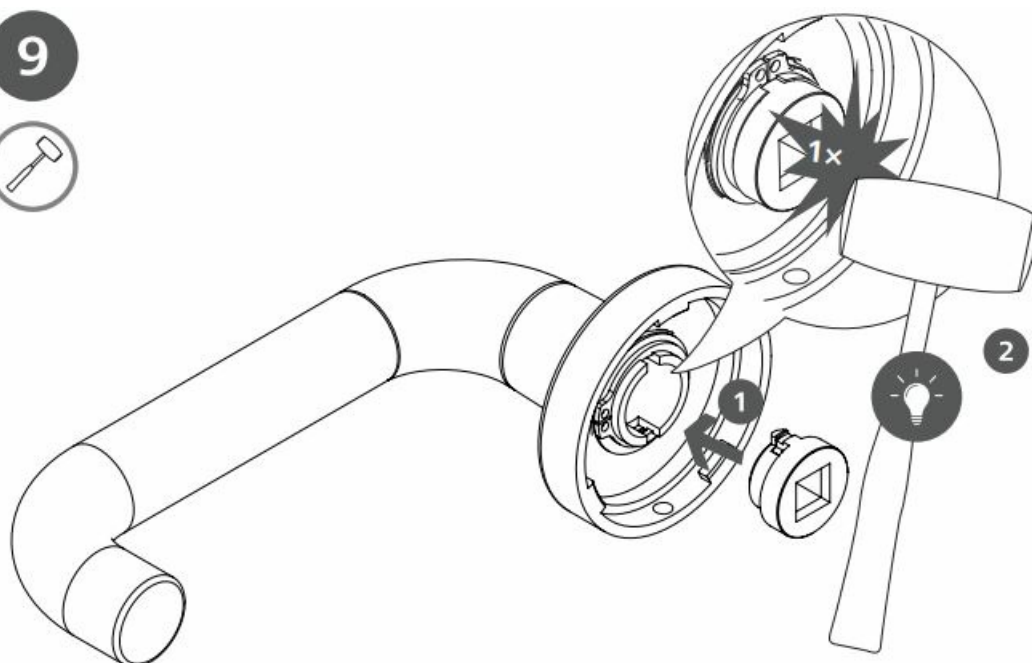
7



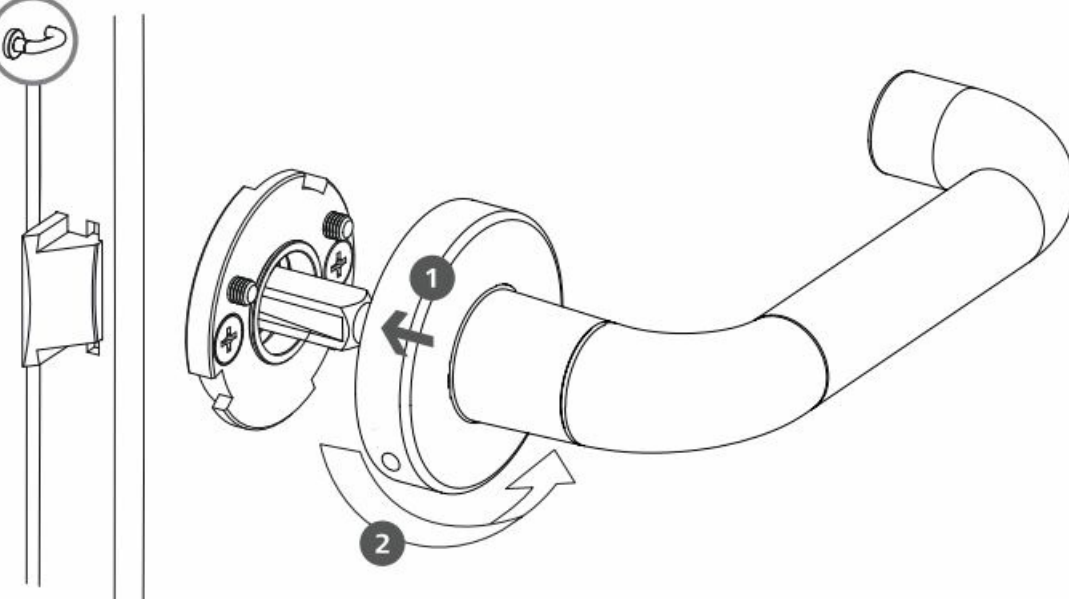
8

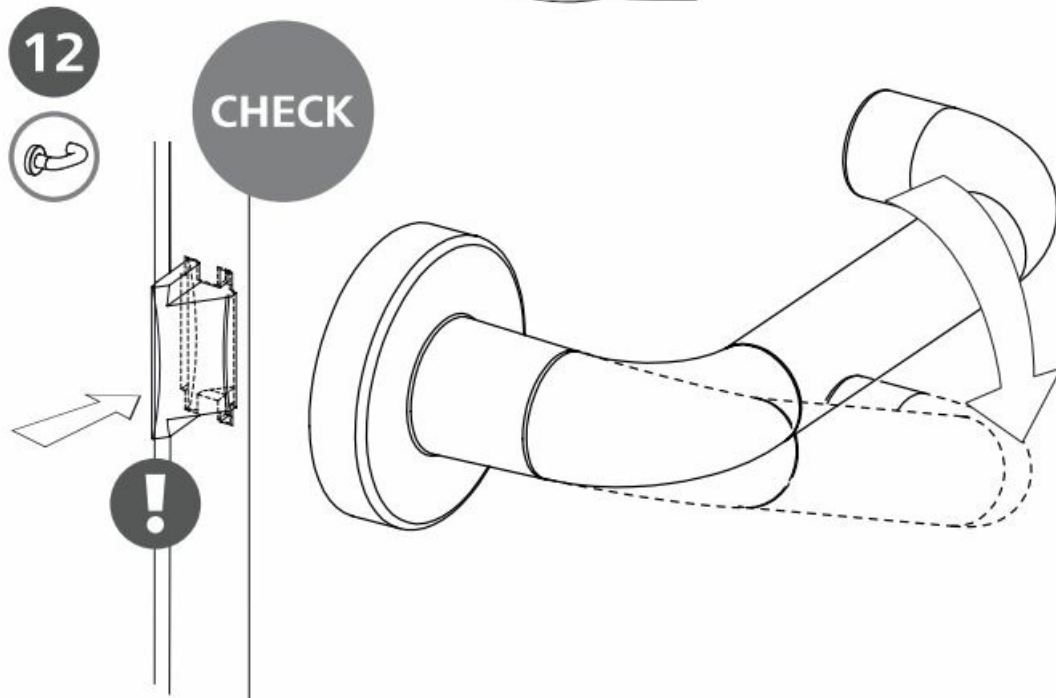
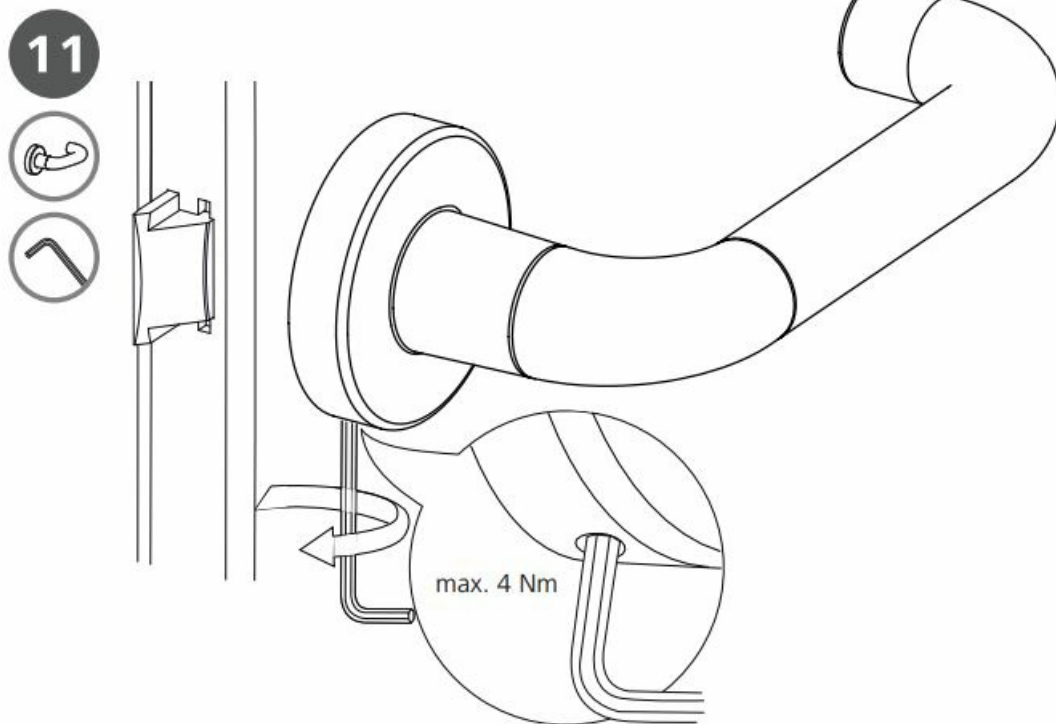






9



10





  Xesar <small>Handgeopendertes elektronisches Türschloß Mecanisme de serrare electronică cu telecomandă Elektronische Schloß mit Fernbedienung</small>	EVVA Xesar Electronic Locking Device [pdf] Instruction Manual E.X.DR.Z0.U.80.EM.T1.LI, Xesar, Xesar Electronic Locking Device, Electronic Locking Device, Locking Device, Device
  Xesar <small>Handgeopendertes elektronisches Türschloß Mecanisme de serrare electronică cu telecomandă Elektronische Schloß mit Fernbedienung</small>	EVVA Xesar Electronic Locking Device [pdf] Instruction Manual E.X.BE.Z0, E.X.BE.FS.U.80.M.T1.BB.E00, Xesar Electronic Locking Device, Xesar, Electronic Locking Device

References

- [Mechanische und elektronische Schließsysteme | Zutrittssysteme | EVVA](#)