

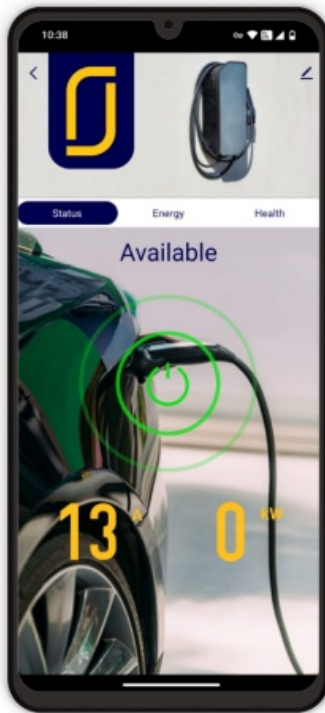


Contents [[hide](#)]

- [1 EVshield App](#)
- [2 Product Information](#)
- [3 Product Usage Instructions](#)
- [4 Disclaimer](#)
- [5 Connect to APP](#)
- [6 2.4GHz Wi-Fi Settings](#)
- [7 Support](#)
- [8 Installation Wiring and Dimensions](#)
- [9 Safety and Installation Instructions](#)
- [10 Function Overview](#)
- [11 Display Settings](#)
- [12 Frequently Asked Questions \(FAQ\)](#)
- [13 Documents / Resources](#)
 - [13.1 References](#)

EVshield®

EVshield App



Product Information

Specifications:

- **Operating Voltage:** ~230V AC
- **Max Current:** 80A
- **Connectivity:** 2.4GHz Wi-Fi
- **Features:** Over/Under Voltage Protection, Over/Under Current Protection, Delay Protection, Timer Switch, Voltage/Current Imbalance Protection, Phase Sequence Protection, Bidirectional Energy Monitor
- **Display:** White and Red Backlight

Product Usage Instructions

Installation:

Ensure the device is installed by a certified installer following local safety guidelines. Connect the device according to terminal markings to avoid malfunctions or safety hazards.

Connecting to Wi-Fi:

1. Turn on the device and wait for the Wi-Fi LED indication.

2. **Fast Flash:** Ready to Connect.
3. **Slow Flash:** Wi-Fi OFFLINE.
4. **LED ON:** Wi-Fi Connected.
5. To reset Wi-Fi, press and hold the reset button.

Using the APP:

1. Download a TUYA-based APP from the APP store.
2. Create an account or use the APP as a guest.
3. Add a new device by pressing the symbol in the top right-hand corner.
4. Ensure the device is connected to power and your phone is on a local 2.4GHz Wi-Fi network.

Display Settings:

The display shows different colors for different statuses: White – Normal, Red – Fault detected, Backlight OFF after 180 seconds.

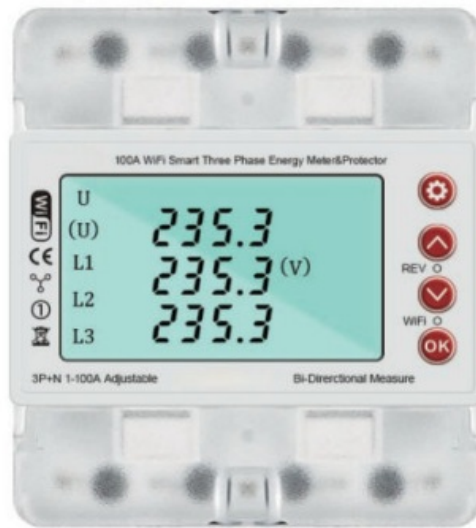
Usage Conditions:

- **Voltage:** ~230V AC
- **Amps:** Max. 80A

Disclaimer

EVshield APP


This guide is to be used as a reference only. EVshield does not provide advice, instructions or recommendations regarding the electrical installation and cannot be held liable for incorrect installation of the EVshield SMART-pack and associated components. Always follow the instructions of the charger manufacturer and have the installation carried out by a certified installer according to local safety guidelines.

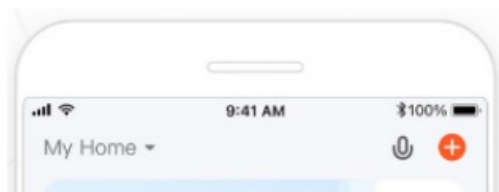


Connect to APP

Download any TUYA-based APP from the APP store. For example, use one of the official TUYA APPs listed below:



1. Create an account or use the APP as a guest.
2. In the top right-hand corner. Press the  symbol to add a new device.



3. Make sure the device is connected to mains power
4. Make sure the phone is connected to a local 2.4GHz Wi-Fi network

2.4GHz Wi-Fi Settings

Wi-Fi LED Indication

- **Fast Flash:** Ready to Connect
- **Slow Flash:** Wi-Fi OFFLINE
- **LED ON:** Wi-Fi Connected

Reset Functions

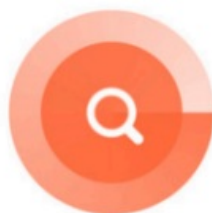
- **Reset Wi-Fi** : : Press & Hold 
- **Reset Consumption**: Go to Display “EPS”  Press & Hold
- **Factory Reset**: Go to Display “Hz Frequency”  Press & Hold

Support



Connect to APP

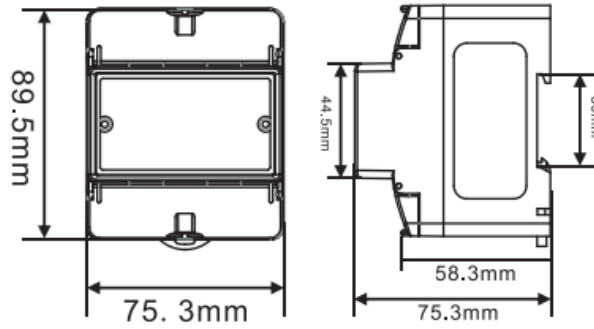
Adding device...
Ensure that the Wi-Fi signal is good.



12%

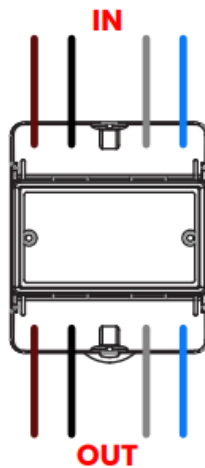


Installation Wiring and Dimensions



Correct Wiring Required

The Device must be installed in accordance with the terminal markings. Incorrect wiring may result in malfunction or safety hazards.



Usage Conditions

- **Voltage** : ~230V AC
- **Amps** : Max. 80A
- **Temperature** : -20°C ~ 60°C
- **Humidity** : <85%
- **Altitude** : <2000m
- **Wiring**: Max. 35mm²
- **Mounting**: 35mm DIN-rails

Safety and Installation Instructions

No Isolation Function

This device does not provide an isolation function.

Always disconnect mains power before servicing or repairing the device.

Neutral Line Connection

The neutral (N) line is internally connected and does not include a disconnection mechanism.

Ensure appropriate external disconnection measures are in place.

Supplementary Protection Only

This product offers limited current protection and is not a substitute for a standard circuit breaker.

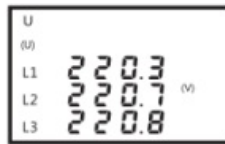
For proper short-circuit protection, install appropriate breakers at the upstream side of this device.

Function Overview

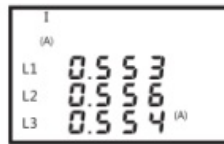
- Over Voltage Protection
- Under Voltage Protection
- Overcurrent Protection
- Under Current Protection
- Delay Protection
- Timer Switch
- Voltage Imbalance Protection
- Current Imbalance Protection
- Shortage Phase Protection
- Phase Sequence Protection
- Bidirectional Energy Monitor
- 2.4GHz Wi-Fi Transmitter
- APP enabled

Display Settings

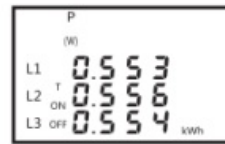
- **White:** Normal
- **Red:** Fault detected
- **Backlight:** OFF after 180 seconds



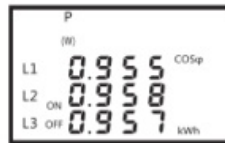
Phase Voltage



Three Phase Current



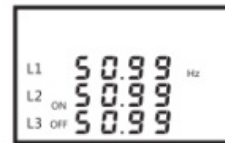
Three Phase Active Power



Three Phase
Reactive Power



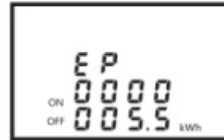
Three Phase
Power Factor



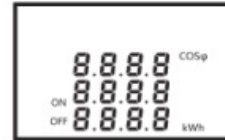
Three Phase
Frequency



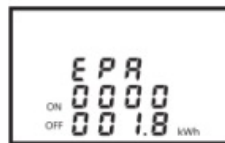
Active Combined
Energy Consumption



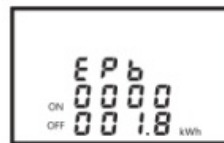
Active Forward
Energy Consumption



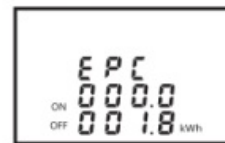
Active Reverse
Energy Consumption



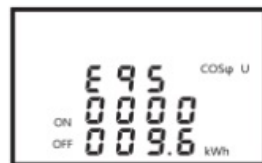
Active A-Phase
Energy Consumption



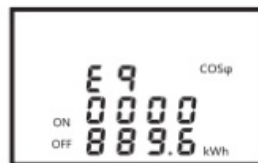
Active B-Phase
Energy Consumption



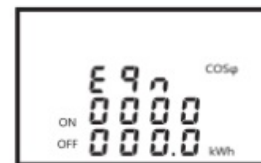
Active C-Phase
Energy Consumption



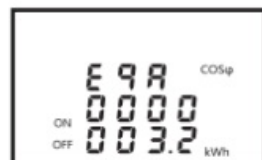
Combined Reactive
Energy Consumption



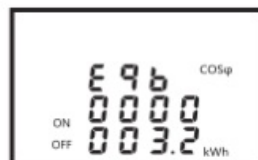
Reactive Forward
Energy Consumption



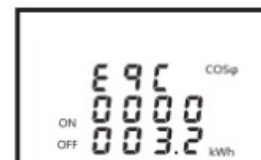
Reactive Reverse
Energy Consumption



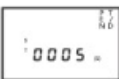



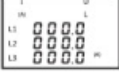


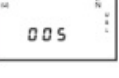
Reactive Phase A
Energy Consumption



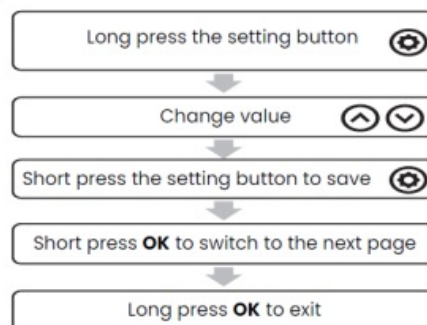
Reactive Phase B
Energy Consumption



Reactive Phase C
Energy Consumption

Function	Set Range	Factory Default	Function Description
Power Restoration Delay Protection	---- (Manual Override) 0000 - 9999 Seconds	5 s	 Protects the device from being destroyed by instantaneous high voltage and surge during power fluctuations.
Over Voltage Limit	60-300V	275 V	 When the voltage is OVER the set limit, the device will automatically switch off. (Every phase must be set separately)
Under Voltage Limit	60-300V	175 V	 When the voltage is UNDER the set limit, the device will automatically switch off. (Every phase must be set separately)
Voltage Protection Recovery	---- (Manual Override) 0000 - 9999 Seconds	20 s	 Set delay time to recover functions after Under or Over Voltage settings tripped
Over Current Limit	0.1-80A	80 A	 When the Current is OVER the set limit, the device will automatically switch off. (Every phase must be set separately)
Over Current Limit Protection Delay	0000 - 9999 Seconds	5 s	 Set delay time to switch OFF after OVER Current Limit has been reached
Over Current Limit Protection Recovery	0000 - 9999 Seconds	60 s	 Set delay time to switch ON after OVER Current Limit has been solved
Voltage Balance Protection	ON / OFF 0000 - 9999 %	ON	 The device will switch off if the highest or lowest voltage imbalance of L1/L2/L3 Phase exceeds the set value.

---- : Manual Override
0000 : No Delay




Frequently Asked Questions (FAQ)

- **Q: Can I install the EVshield SMART-pack myself?**
 - **A:** We recommend having the installation carried out by a certified installer to ensure safety and proper functioning.
- **Q: How do I reset the Wi-Fi connection?**
 - **A:** Press and hold the reset button to reset the Wi-Fi connection on the device.

- **Q: What should I do if the Wi-Fi LED indicates “Wi-Fi OFFLINE”?**
 - **A:** Check your Wi-Fi network connection and ensure it is a local 2.4GHz network for proper functioning.

Documents / Resources

	EVshield EVshield App [pdf] User Guide EVshield App, App
---	---

References

- [User Manual](#)

📁 app, EVshield, EVshield

📁 EVshield App

Leave a comment

Your email address will not be published. Required fields are marked *

Comment *

Name

Email

Website

☐ Save my name, email, and website in this browser for the next time I comment.

Post Comment

Search:

e.g. whirlpool wrf535swhz

Search

[Manuals+](#) | [Upload](#) | [Deep Search](#) | [Privacy Policy](#) | [@manuals.plus](#) | [YouTube](#)

This website is an independent publication and is neither affiliated with nor endorsed by any of the trademark owners. The "Bluetooth®" word mark and logos are registered trademarks owned by Bluetooth SIG, Inc. The "Wi-Fi®" word mark and logos are registered trademarks owned by the Wi-Fi Alliance. Any use of these marks on this website does not imply any affiliation with or endorsement.