

EVOLVEO EVOLVEO Thermal Smart Wireless Programmable Thermostat



EVOLVEO Thermal Smart Wireless Programmable Thermostat Owner's Manual

[Home](#) » [Evolveo](#) » EVOLVEO Thermal Smart Wireless Programmable Thermostat Owner's Manual 

Contents

- 1 [EVOLVEO Thermal Smart Wireless Programmable Thermostat](#)
- 2 [Product Usage Instructions](#)
- 3 [INTRODUCTION](#)
- 4 [SAFETY WARNINGS AND INSTRUCTIONS](#)
- 5 [PACKAGING CONTENT](#)
- 6 [SPECIFICATIONS](#)
- 7 [DESCRIPTION OF INDIVIDUAL PARTS](#)
- 8 [SERVICE](#)
- 9 [DESCRIPTION OF OPTIONAL SETTINGS](#)
- 10 [INSTALLATION](#)
- 11 [WARRANTY AND POST-WARRANTY SERVICE](#)
- 12 [Documents / Resources](#)
 - 12.1 [References](#)
- 13 [Related Posts](#)

EVOLVEO

EVOLVEO Thermal Smart Wireless Programmable Thermostat



Product Specifications

- Model: Thermal
- Version/Date: III. / 25. 11. 2024
- Languages: CZ, SK, EN, HU, RO, DE, IT, SI
- Power Supply: 100-240V, 50/60Hz

Product Usage Instructions

Installation

1. Ensure the power supply is within the range of 100-240V and 50/60Hz.

Setting up the Thermostat

1. Press the 'Smart Life' or 'Tuya' button on the device.
2. The LED indicator will blink rapidly until the setup process is complete.

Temperature Settings

1. Use the control panel to set the desired temperature.
2. The temperature range is from 5°C to 35°C.

Frost Protection Function

1. To enable frost protection, set the temperature within the range of 5°C to 15°C.

Detection Function

1. Enable the detection function by following the provided instructions.
2. Set the detection time between 2 to 30 minutes.

Frequently Asked Questions (FAQ)

- **Q: How do I reset the thermostat?**

A: To reset the thermostat, press and hold the reset button for 10 seconds.

• **Q: Can I control the thermostat remotely?**

A: Yes, you can control the thermostat remotely using the Smart Life or Tuya mobile app.

INTRODUCTION

The Thermal thermostat is designed for efficient control of heating or air conditioning systems. Unlike standard home thermostats, Thermal features an innovative design where the control unit (transmitter) and switching unit (receiver) are separated and connected by a wireless link. The switching unit is designed to connect and control the heating/air conditioning system, while the portable control unit is used for convenient operation and temperature adjustment. These units communicate with each other via a reliable radio signal. The key advantage of this system is its variability and easy access to temperature control, ensuring comfortable and efficient climate control in your premises.

WELCOME TO THE EVOLVEO FAMILY OF PRODUCTS

- Read the operating instructions for the thermostat and the boiler or air conditioner carefully before using it for the first time.
- Keep this user manual for future reference
- Make sure that others who will be using this thermostat read this user manual.
- We recommend keeping the original product packaging for the duration of the warranty

THE MOST UP-TO-DATE VERSION OF THE USER MANUAL

Due to the ongoing innovation of EVOLVEO products and changes in legislation, you can always find the most up-to-date version of this user manual on the website www.evolveo.com or by simply scanning the QR code shown below with your mobile phone:



SAFETY WARNINGS AND INSTRUCTIONS

Warning: This appliance must only be installed by a qualified person.

WARNING! There is a risk of injury or damage to the appliance if not installed correctly.

GENERAL NOTICES

- Read the operating instructions for the thermostat and the boiler or air conditioner carefully before using it for the first time.
- Turn off the power before installing the thermostat.
- We recommend that installation is carried out by a qualified person.
- Follow the prescribed standards for installation.

- Use the thermostat only as specified in this user manual.
- Unpack the thermostat carefully, taking care not to throw away any part of the packaging material before you have found all the components of the product.
- Exercise extra caution if the thermostat will be used around children. Always place the thermostat out of their reach. Children should be supervised to ensure that they do not play with the product.
- Do not allow the thermostat to be used as a toy.
- Do not shake the product and make sure it does not fall to the ground.
- The manufacturer is not liable for damages caused by improper use of the thermostat and its accessories.

THE LOCATION OF THE EQUIPMENT

- Place the thermostat on a horizontal surface or add to the wall
- Use and store the thermostat away from explosive gases, flammable, combustible and volatile substances (solvents, varnishes, adhesives, etc.).
- Do not use the thermostat within the range of a strong electromagnetic field (e.g. microwave oven).
- Do not place the thermostat or its accessories on or near an electric or gas cooker or on the edge of a table or kitchen worktop.
- Do not expose the thermostat to dripping or splashing water. Do not spray or rinse it with water or any other liquid. Do not immerse it in water or any other liquid, even partially.

PACKAGING CONTENT

- Thermal thermostat transmitter
- Thermal thermostat receiver
- Wall mounting frame
- Table stand
- Power cable
- Power adapter
- Manual
- 4× screw (4 × 22 mm)
- 4× screw (3.5 × 22 mm)

SPECIFICATIONS

- Power supply: 2×AA alkaline batteries | USB: 5.0 V / 1.0 A
- Backup storage: EEPROM
- Receiver operating voltage: AC 230 V, 50/60 Hz
- Maximum voltage / (ohmic) load: AC 250 V, 10.0 A
- Frequency: 868 MHz
- Channel selection: Programming the thermostat and receiver
- Switching options: 7 days / 4 periods every day
- Receiver switch contacts: NO and NC
- Temperature setting: 5 °C ~ 35 °C, in 0.5 °C increments.
- Accuracy: +/- 0.5°C

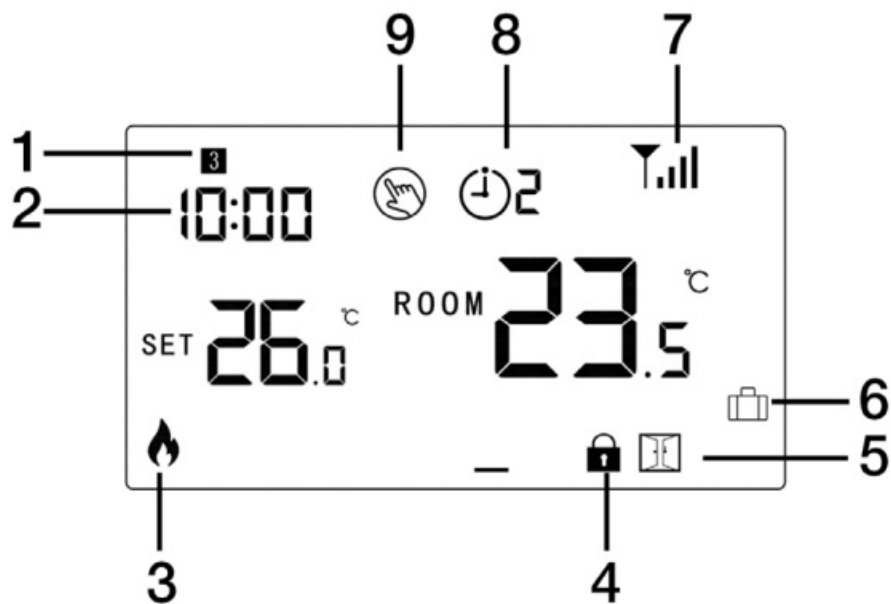
- Thermostat dimensions: 125 × 98 × 23.5 mm
- Receiver dimensions: 90 × 90 × 26 mm
- Degree of protection IP: IP20

DEGREE OF PROTECTION AGAINST ELECTRIC SHOCK

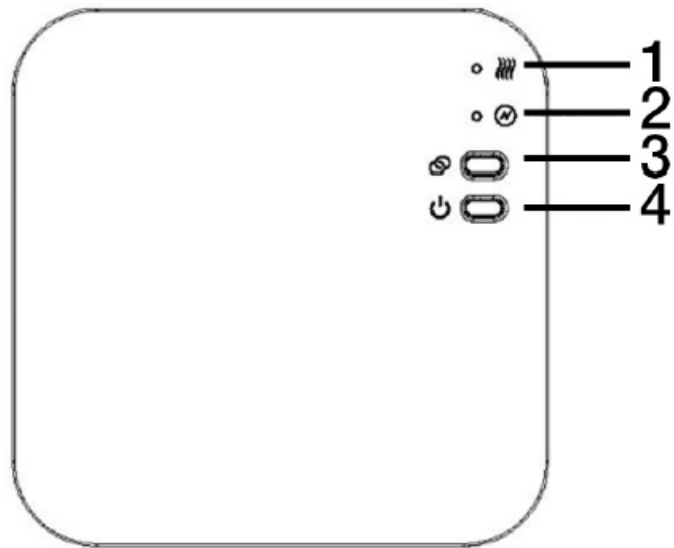
Class II – Protection against electric shock is provided by double or reinforced insulation.

DESCRIPTION OF INDIVIDUAL PARTS

1. Day of the week
2. Hodiny
3. Heating on
4. Child lock
5. Open Window Mode
6. Absence mode
7. Signal icon
8. Current PRG period
9. Manual mode

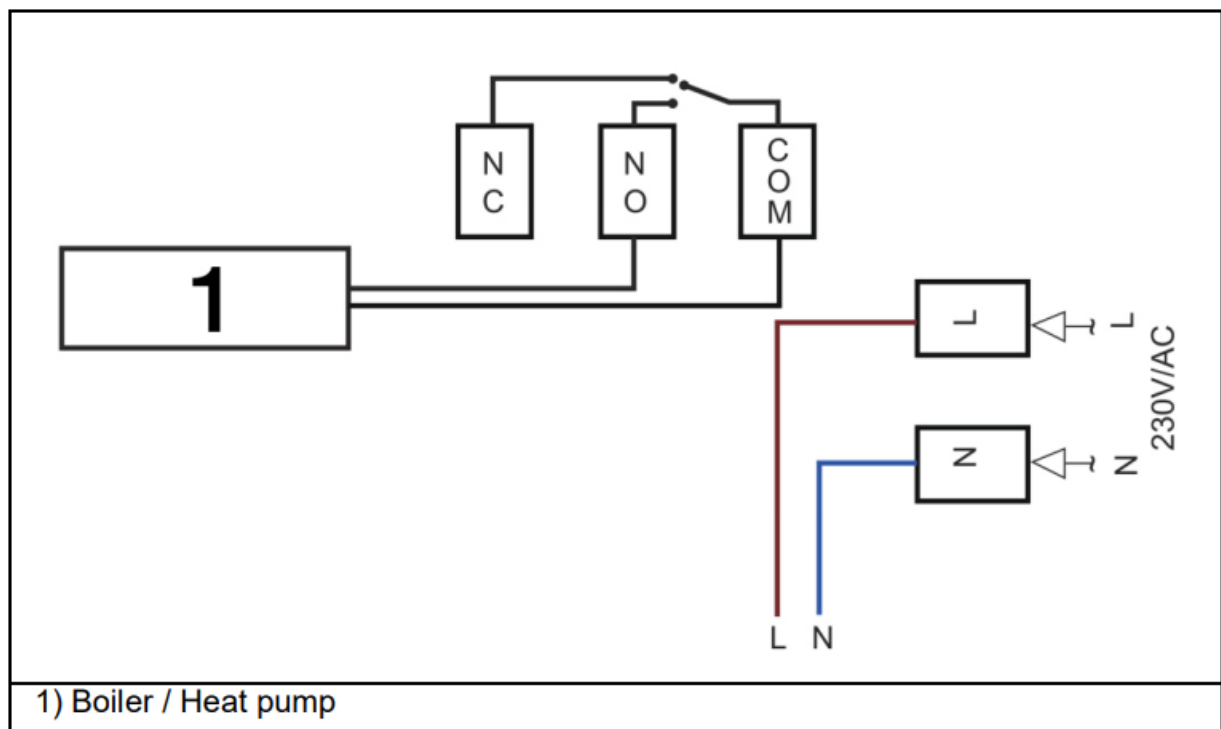


1. Heating on indicator LED1
2. Power indicator LED2
3. Pairing button
4. On/Off button

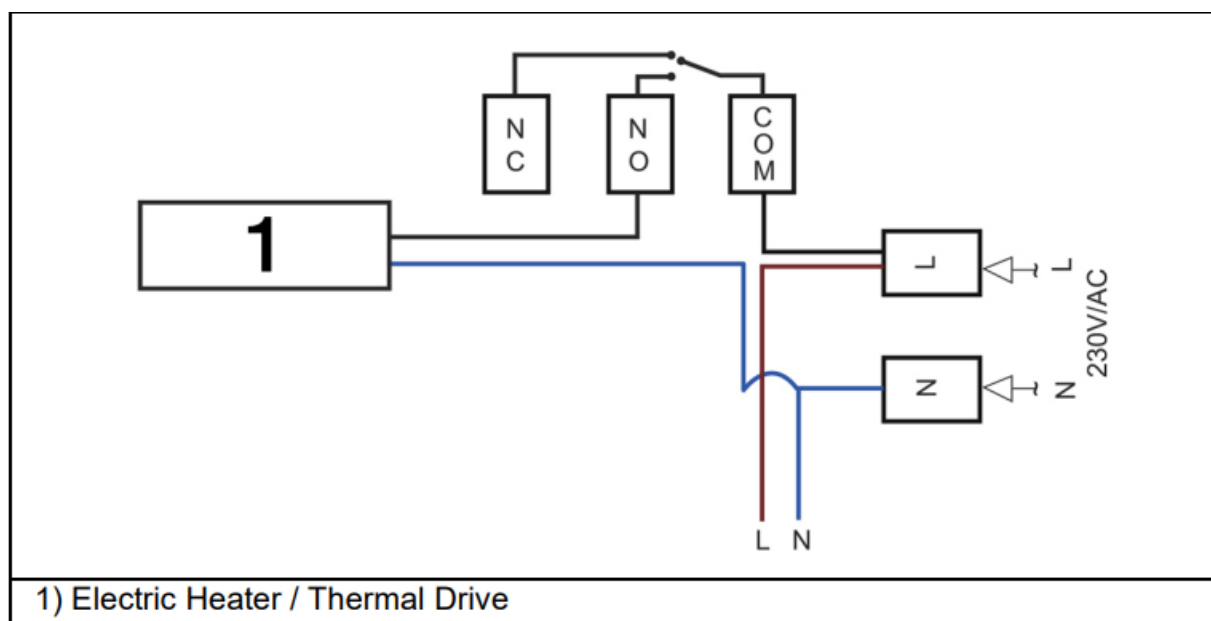


WIRING DIAGRAM

For voltage-free boiler/heat pump control



For controlling an electric heater/heat drive with 230 V AC output (COM & L cable)

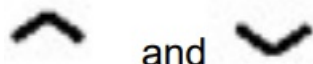


SERVICE

CLOCK SETTINGS

The date and time settings are automatically updated when the thermostat is connected to a Wi-Fi network via the app. If this does not happen, follow the procedure below:

Press and hold the M button for 3 seconds, set the clock and preset temperature for each mode by pressing the



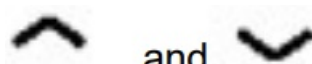
and

buttons, each press of the M button will move to the next item setting.

Offer	Description	Offer	Description
01	Settings – Minutes	03	Settings – weekday
02	Settings – Clock	04	Preset mode temperature

CHILDREN'S LOCK

When the child lock is activated (see function 11 in parameter settings), the buttons will be locked when the



and


backlight is switched off. To temporarily set them, unlock them by pressing the seconds.

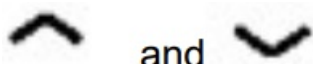
MODE SELECTION

Press the M button to switch from PRG mode  to absent mode  manual mode .

Notes:

Absence mode: a thermostat temperature setting that replaces the pre-programmed temperature with a temperature of your choice, making it easy to save energy when you're away from home for extended periods of time.

When you are away from home, you can select the absence mode by pressing the M button , then the thermostat will operate according to the preset energy saving temperature (7°C recommended), you can change





and

the temperature by pressing

PRG SETUP

(Recommended option) After pairing the thermostat and controller and connecting the system to Wi-Fi, program everything through the app.

(Alternative option without using the app) Press and hold the P button for 3 seconds to enter the program settings.


Press the  and  buttons to set the schedule (day of the week-period-start time-temperature), each press of the P button moves to the next setting item.

Default settings

Period	1		2		3		4	
	Time	Temperature	Time	Temperature	Time	Temperature	Time	Temperature
12345 (Mo-Fr)	7:00	22 °C	8:30	19 °C	17:00	22 °C	22:00	19 °C
6 (Saturday)	8:00	22 °C	8:30	22 °C	17:00	22 °C	22:00	19 °C
7 (Sunday)	8:00	22 °C	8:30	22 °C	17:00	22 °C	22:00	19 °C

OPEN WINDOW DETECTION (OWD) FUNCTION


If the open window detection function is enabled in the parameter settings, the system will automatically stop heating when it detects a sudden drop in room temperature (normally 2 °C in 15 minutes). This is usually caused by opening a window or door without turning off the heating device.

After 30 minutes, the device will return to the previous operating mode and the  light will disappear. Press any button to exit the OWD function during the heating off period.

DEVICE PAIRING

1) Long press the pairing button on the receiver until LED1 flashes rapidly.

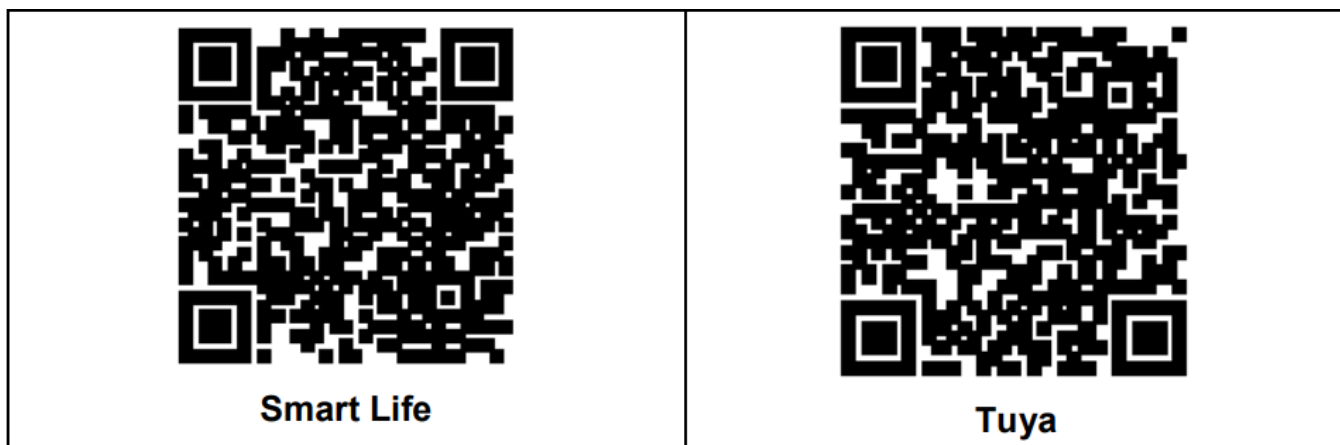
2) Turn off the display of the transmitter unit with the power off touch button  until the code appears on

the screen, then press the button .

3) Wait for a while until LED1 stops flashing – the pairing was successful.

CONNECTION TO THE APPLICATION

Download the “Smart life” app (Tuya) from Google play or the App Store. Once downloaded, the app will prompt you to register your device. Enter your email, select your country, and create a password for your “Smart life” (Tuya) account.



Bluetooth connection method

- Enable Bluetooth on your phone
- Press the “+” button in the top right corner to add a device.
- Long press the pairing button on the receiver to enter connection mode, the LED will flash rapidly.
- After the app finds a nearby Bluetooth device, press the “Add” button.
- Select Wi-Fi and enter your password
- Wait for the device to successfully add


Wi-Fi connection method

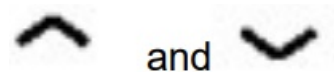
- Press the “+” button in the top right corner to add a device
- Go to “Small Home Appliances” and select “Thermostat (BLE+Wi-Fi)” from the list.
- Select the 2.4Ghz Wi-Fi network, enter the password and press the “Next” button
- Long press the pairing button on the receiver to enter connection mode, the LED will flash rapidly
- Press the “Next” button in the app, check the “LED flashes fast” box on your phone and add the device
- Wait for a while until the connection is complete. The LED on the receiver stops flashing. Connection to WiFi was successful

If the LED still flashes slowly, the connection has failed, try again from step 5

Remark: If the device is connected and remains online when you want to make a new connection, remove the device from the app or clear all pairings on the receiver.

PARAMETER SETTINGS

Turn off the thermostat, press and hold the M button and the button  for 6 seconds to enter the parameter settings. Press the M button each time to move to the next item setting. Set the value by pressing



Offer	Description	Scope	Default value
01	Temperature calibration of the internal sensor	-8 °C – 8 °C	0°C
02	Set point Max.	5 °C – 35 °C	35 °C
03	Set Point Min.	5 °C – 35 °C	5 °C
05	Frost protection settings	Disable: × Allow: 5 °C – 15 °C	5 °C

09	Switching differential	0 – 3 °C	0 °C
11	Children's castle	1: Enable 0: Disable	0
12	Open window detection function	1: Enable 0: Disable	0
13	OWD detection time	2 – 30 minutes	15 minutes
14	OWD temperature drop at the time of detection)	2, 3, 4 °C	2 °C
15	OWD delay time selection (Return to previous working state)	10 – 60min	30 minutes
17	Restore factory settings	0: No	0
		1: Yes, then press the on/off button for 5 seconds, wait for the thermostat to restart	
32	Setting the brightness in standby mode (only when powered via USB)	0 – 100%	40%

DESCRIPTION OF OPTIONAL SETTINGS

- Function 01: This function is used to calibrate the temperature of the air sensor if necessary
- Feature 02/03: Max. and min. temperature
- Function 05: Frost protection Temperature setting: This temperature is maintained when the thermostat is in frost protection mode
- Function 09: Switching Differential – This function allows you to increase the switching differential of the thermostat. The default value is 0 °C, which means that if the temperature is set to 20 °C, the thermostat will switch the heating on at 19.5 °C and off at 20.5 °C. With a difference of 0.5 °C, the heater switches on at 19 °C and off at 21 °C
- Function 11: This function is used to lock the buttons. Once activated, the buttons will lock when the backlight is

turned off, you can long press the

and

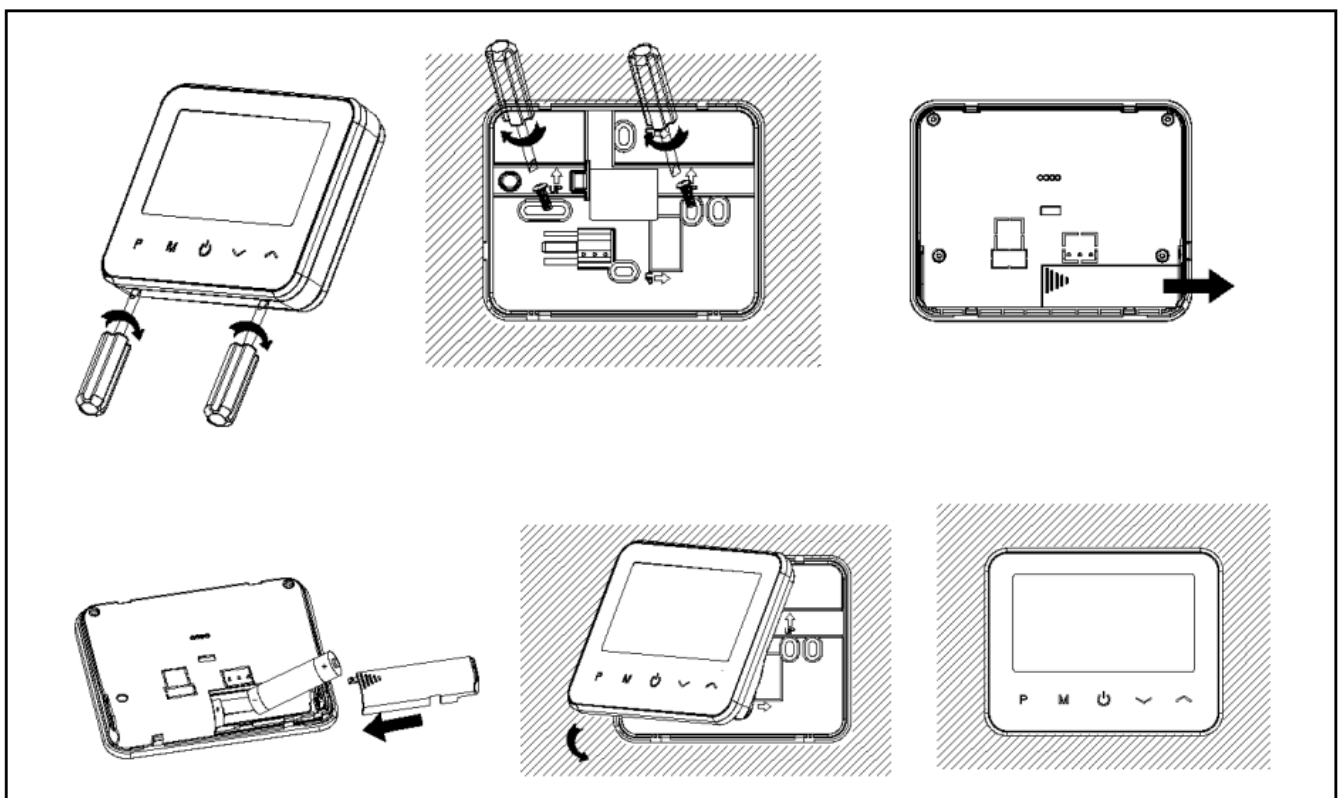
buttons to temporarily unlock them.

- Function 12: This feature allows you to save energy. If you enable the open window detection function, the system will automatically stop heating when it detects a sudden drop in room temperature (normally 2 °C in 15 minutes). This is usually caused by opening a window or door without turning off the heating device
- Function 13: set the room temperature drop detection time between 2-15 minutes (15 minutes is the default setting)
- Function 14: temperature drop during detection time. Settings between 2-4 °C (default setting is 2 °C)
- Function 15: Select the time to exit OWD mode. Setting between 10-60 min (30 min is the default setting)
- Function 17: Factory reset. If factory reset is required, set menu 17 to 1 and then long press the on/off button until the thermostat restarts.
- Function 32: Setting the backlight brightness in standby mode: When powered by a 5.0 V/1.0 A thermostat, the backlight brightness can be set from 0-100%, 0% means the backlight is off. If the thermostat is powered by an AA battery, the backlight will be switched off to save energy.

INSTALLATION

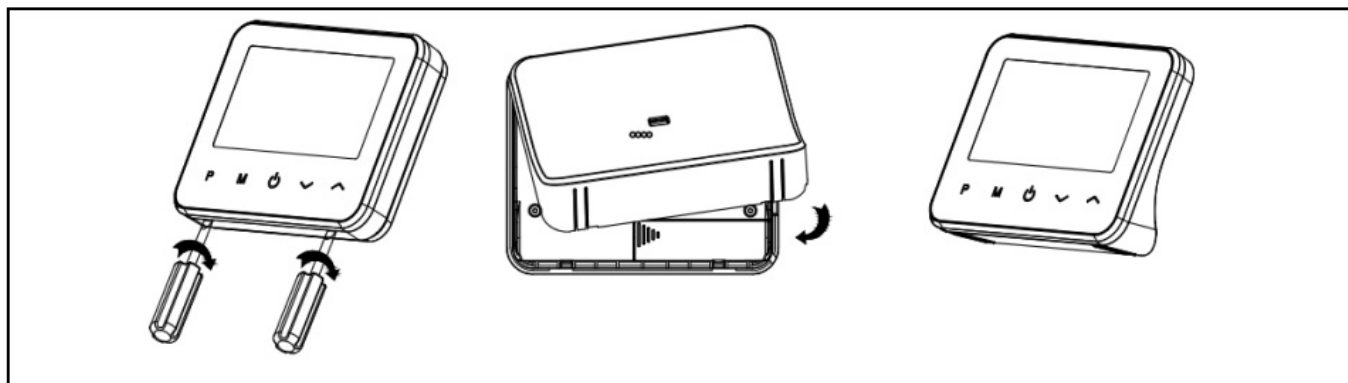
INSTALLING THE THERMOSTAT ON THE WALL

1. Carefully separate the front of the thermostat from the back plate by inserting a small flathead screwdriver into the grooves on the bottom of the thermostat.
2. Use the back plate as a positioning template to mark the 2 hole positions on the wall. Drill holes at the marked locations and insert a dowel into each hole. Screw the back plate of the thermostat firmly to the wall.
3. Remove the battery cover and insert the batteries.
4. Attach the front of the thermostat back to the back plate of the thermostat.



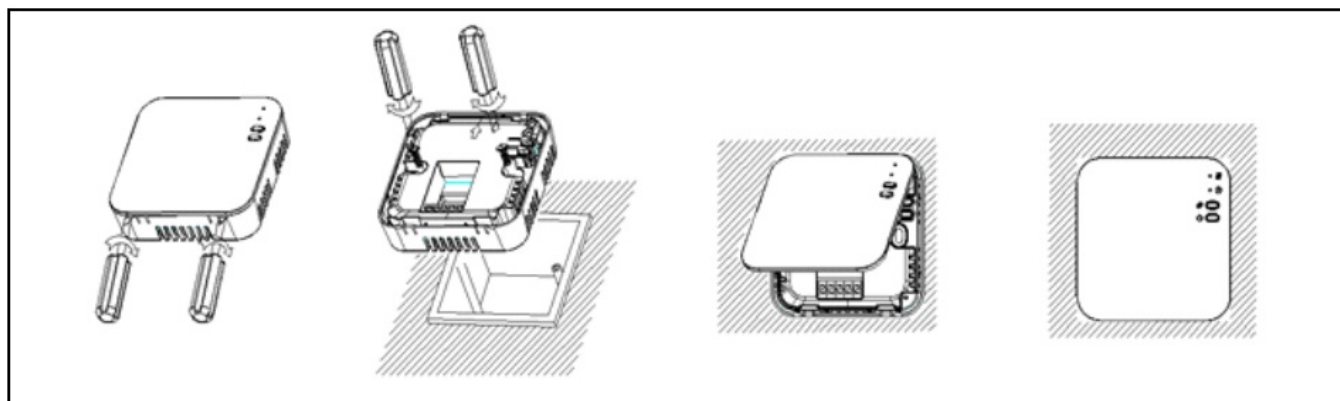
INSTALLING A THERMOSTAT ON THE TABLE

1. Carefully separate the front of the thermostat from the back plate by inserting a small flathead screwdriver into the grooves on the bottom of the thermostat
2. Attach the front of the thermostat to the table stand provided.



INSTALLATION OF THE RECEIVER ON THE WALL

1. Using a small screwdriver, slightly loosen the screw located on the base of the RF switch. You can then carefully separate the front panel from the back panel.
2. Place the back plate of the RF-receiver on the wall and fix it with the screws provided.
3. Connect the cables to the RF receiver according to the wiring diagram.
4. Mount the front panel on the back plate and tighten the fixing screw.
5. Turn on the power – the power light will come on.



WARRANTY AND POST-WARRANTY SERVICE

Repairs and servicing can only be carried out at an authorized service point for EVOLVEO products (more at www.evolveo.com), otherwise you may damage the product and lose the warranty.

Power Adapter Specifications		Unit
Name address and business registration number of the equipment manufacturer	Abacus Electric s.r.o. Cukrovarská 987, 196 00 Prague 9	–
Manufacturer's name or trademark, registration number and address of the AC adapter manufacturer	SHENZHEN TIANYIN ELECTRONICS CO., LTD Building 13, 3rd of Tangtou Nangang Industrial Park, Shiyao Street, Baoan, Shenzhen, China 518100	–
Model identifier	TPA-46050100VU	–
Input voltage	100-240	V
AC input frequency	50/60	Hz
Output voltage	5	V
Output current	1	A
Output power	5	W
Average active efficiency	73,63%	%
No-load power consumption	<= 0.1	W



Disposal: The crossed-out container symbol on the product, in the accompanying documentation or on the packaging means that in EU countries, all electrical and electronic equipment, batteries and accumulators must be disposed of separately at the end of their useful life as separated waste. Do not dispose of these products in unsorted municipal waste.



DECLARATION OF CONFORMITY

The company Abacus Electric, s.r.o. hereby declares that the EVOLVEO Thermal phone meets the requirements of the standards and regulations that are relevant for this type of equipment.

The full text of the Declaration of Conformity can be found at <http://ftp.evolveo.com/ce/>


Importer / Manufacturer

- Abacus Electric, s.r.o.
- Planá 2, 370 01, Czech Republic
- Email: helpdesk@evolveo.com
- Made in China

- Copyright © Abacus Electric, s.r.o.
- www.evolveo.com
- www.facebook.com/EvolveoCZ

All rights reserved. The appearance and technical specifications of the product are subject to change without notice.

Documents / Resources

	<p>EVOLVEO Thermal Smart Wireless Programmable Thermostat [pdf] Owner's Manual Thermal Smart Wireless Programmable Thermostat, Thermal, Smart Wireless Programmable T hermostat, Wireless Programmable Thermostat, Programmable Thermostat, Thermostat</p>
---	--

References

- [Index of /ce](#)
- [EVOLVEO.com | official eshop brand](#)
- [User Manual](#)

[Manuals+](#), [Privacy Policy](#)

This website is an independent publication and is neither affiliated with nor endorsed by any of the trademark owners. The "Bluetooth®" word mark and logos are registered trademarks owned by Bluetooth SIG, Inc. The "Wi-Fi®" word mark and logos are registered trademarks owned by the Wi-Fi Alliance. Any use of these marks on this website does not imply any affiliation with or endorsement.