



EVOLVEO Grafico T8 Eight Keys Graphics Tablet Instruction Manual

[Home](#) » [Evolveo](#) » EVOLVEO Grafico T8 Eight Keys Graphics Tablet Instruction Manual 

EVOLVEO Grafico T8 Eight Keys Graphics Tablet



Contents

- 1 Important information**
- 2 Contents of the package**
- 3 Overview**
 - 3.1 Wireless pen**
- 4 Replacing the spikes**
- 5 Connecting**
- 6 Connect to your Android phone**
 - 6.1 Procedure:**
- 7 Wireless pen settings (Windows only)**
- 8 Specifications**
- 9 Installing drivers**
 - 9.1 Instalace pro Windows**
 - 9.2 Installation for MAC OS**
- 10 Technical support**
 - 10.1 DECLARATION OF CONFORMITY**
- 11 Documents / Resources**
- 12 Related Posts**

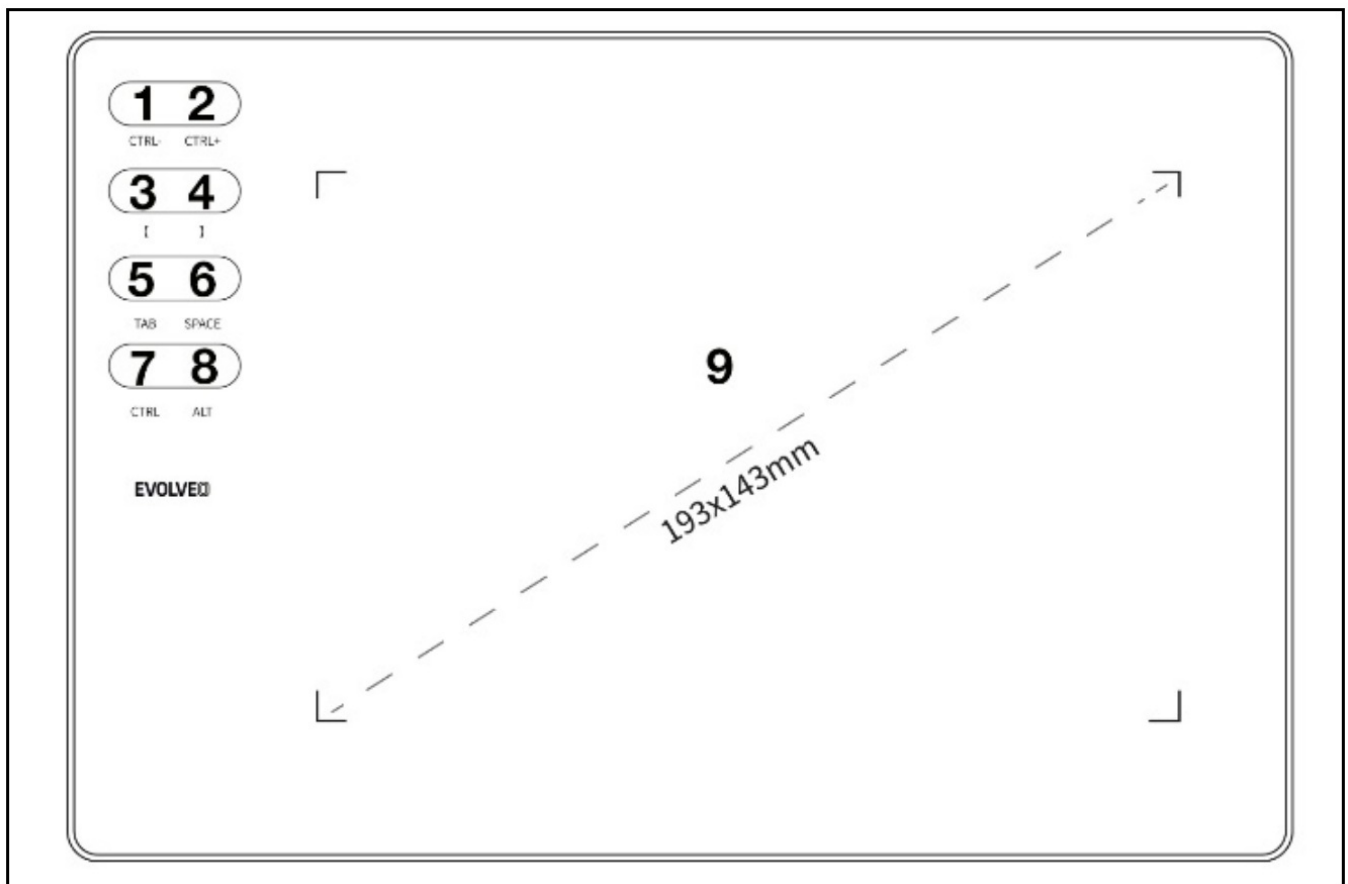
Important information

This manual contains the steps for daily operation, setup and installation of the EVOLVEO Grafico T8. The drivers needed to install the device are stored inside the device.

Contents of the package

- EVOLVEO Grafico T8, graphic tablet
- Wireless pen
- Spare tips – 30pcs
- USB
- User manual
- Micro-USB OTG adapter
- USB C OTG adapter
- Wireless pen case
- Ring for removing spikes
- Work surface foil
- Gloves size L

Overview



- ❶ ctrl
- ❷ ctrl+
- ❸ brush
- ❹ brush+
- ❺ Tabulator
- ❻ space bar
- ❼ ctrl
- ❽ alt
- ❾ active work area

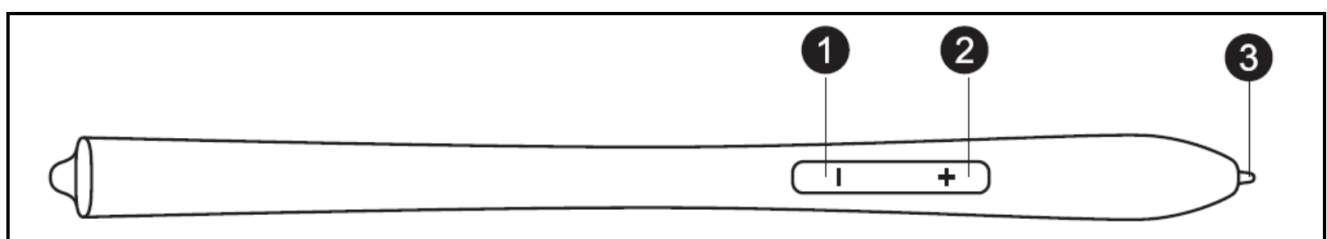
Remark: After successful connection of the device, the normal working state is as follows:

When the wireless pen is not in the graphics tablet workspace, the mouse cursor is static.

When the wireless pen touches the graphics tablet's work area, the mouse cursor moves in response to the movements of the wireless pen.

Remark: Keys 1-8 can be reconfigured to suit your use. Changing the function cannot be done on Mac OS and Android.

Wireless pen



- ❶ pro key –

- ② key for +
- ③ wireless pen tip

Remark: The key for “-” can be adapted to your needs. See the driver interface for details.

Remark: No need to charge the wireless pen or use the battery.

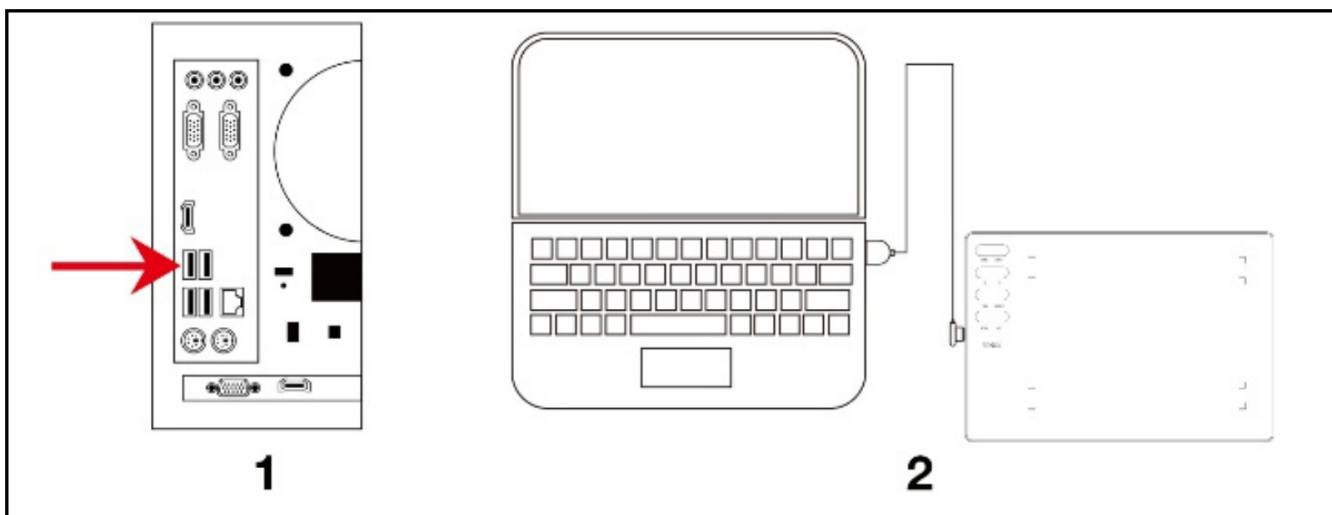
Replacing the spikes



- ① Grasp the nib with the ring and pull it out of the pen
- ② Insert and press the new nib into the pen

Connecting

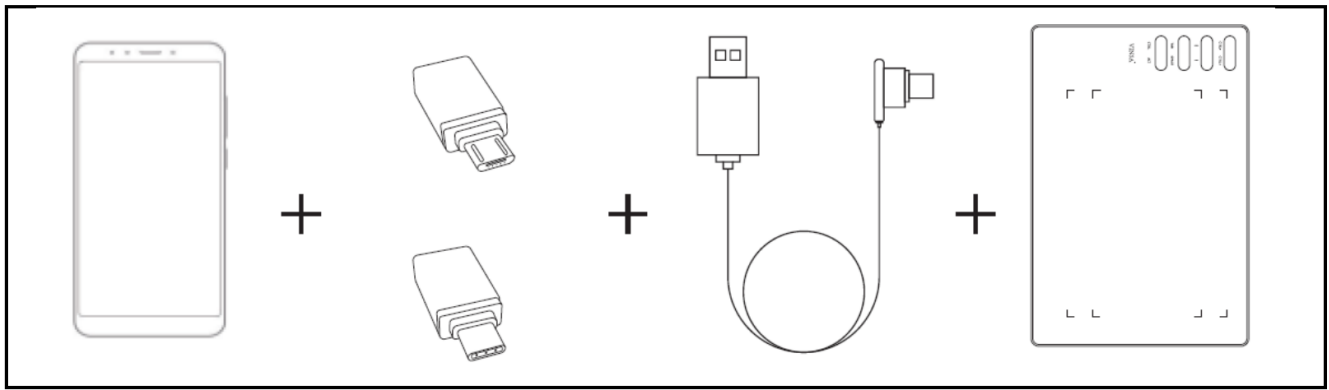
Connect the graphics tablet to the PC USB 2.0/3.0 port. Do not use the front USB ports of your PC to connect.



- ① USB connection to PC
- ② USB connection to laptop

Connect to your Android phone

Android phone/OTG adapter/USB cable/graphic tablet



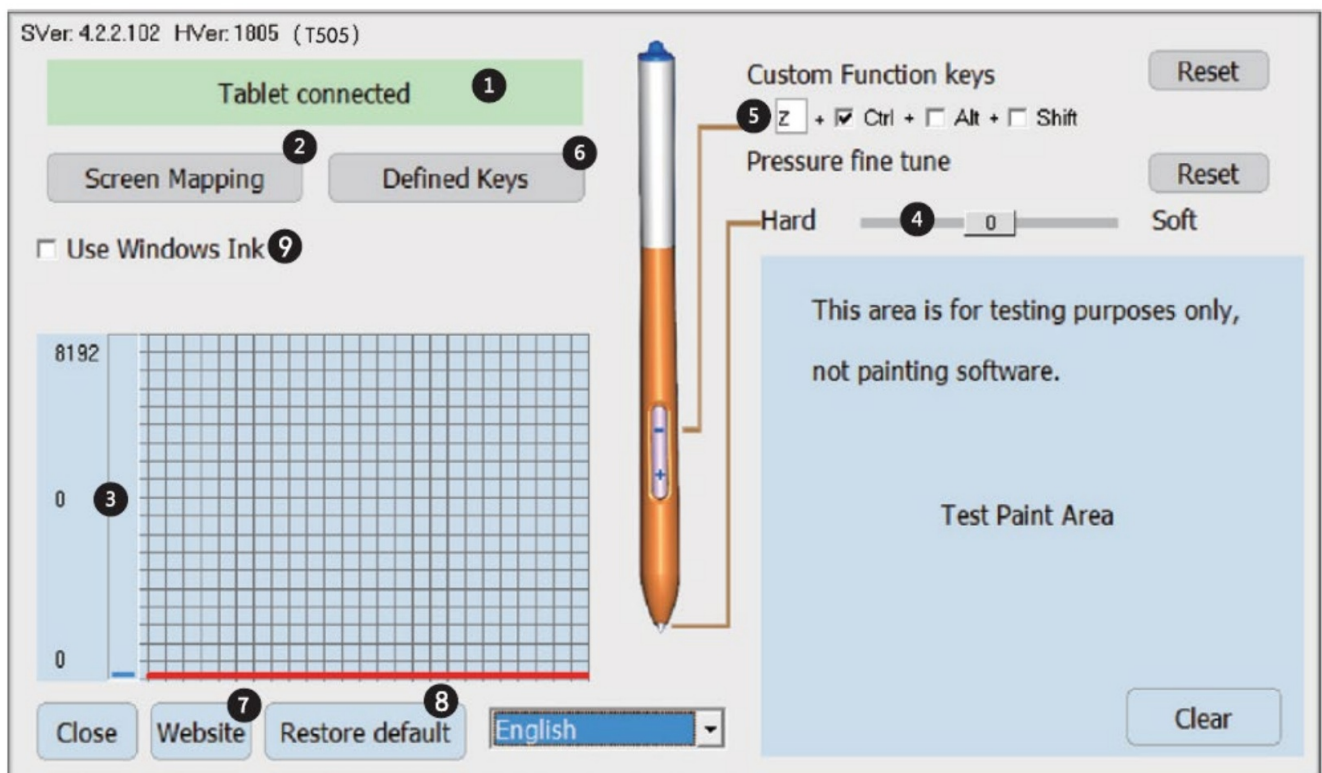
Important: Please turn off the screen rotation function on your phone before connecting.

Important: Please make sure that your phone supports OTG and this feature is enabled.

Procedure:

1. Connect the OTG adapter to your Android phone
2. Connect the USB cable to the OTG adapter
3. Connect the USB cable to the EVOLVEO Grafico T8 graphics tablet

Wireless pen settings (Windows only)



1. PC and graphics tablet connection status
2. Screen mapping: The ability to set the screen and desktop mapping area of a graphics tablet.
3. Wireless pen pressure: Level from 0 to 8192. The curve shows the level of pressure exerted on the graphics tablet by the wireless pen.
4. Fine-tuning of pressure: It serves to slightly adjust the pressure. Default: 0. The change can be seen to the left

of the pressure curve.

5. Wireless pen keys set: Adjustable function of the “-” key. Default: Ctrl+z. The function of the “+” key is set as the right mouse button.
6. Adjustable keys
7. In case of problems, contact technical support.
8. Restore drivers to factory settings
9. Default: not selected

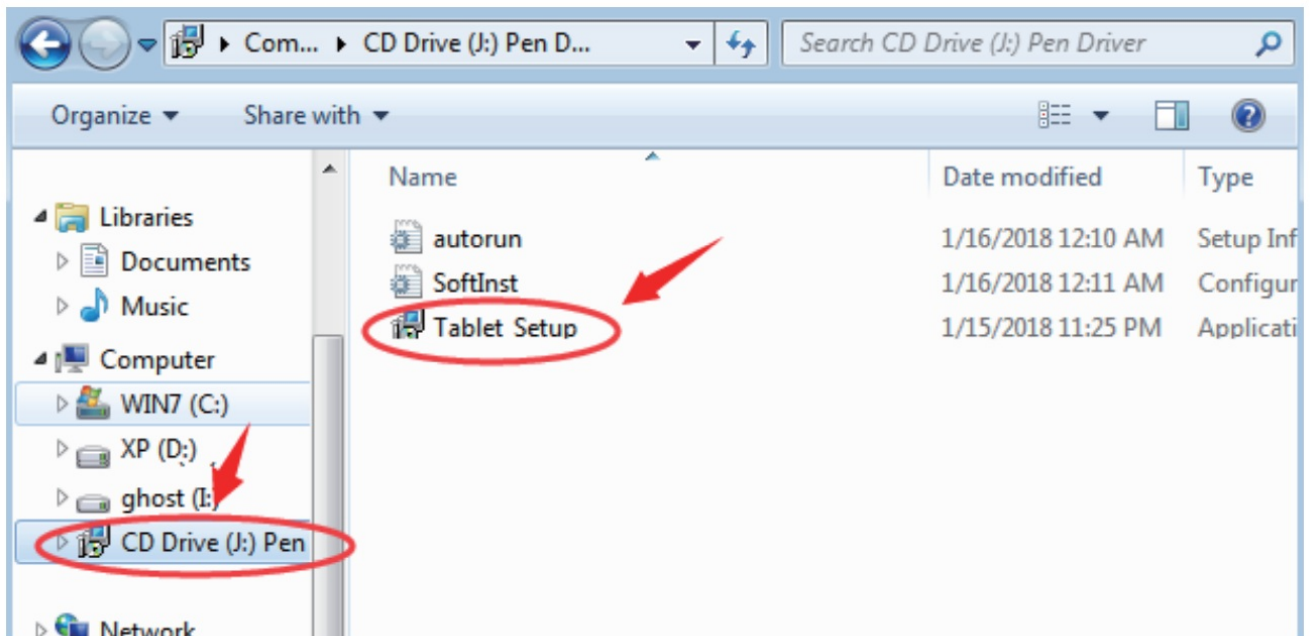
Specifications

Product name	EVOLVED Grafico T8
Product number	TAB GFK T8
Dimensions	280 x 193 x 8 mm
Working voltage	5V
Consumption max.	60mA
Pressure level	8192
Feedback	233 PPS
Screen resolution	5080 LPI
Active height	15 mm
Physical keys	Can be reconfigured in Windows and MAC OS interface. For Android, this feature is undefined.
Active workspace	193 x 143 mm

Installing drivers

Instalace pro Windows

1. After connecting the graphics tablet to your PC, wait a few minutes. Then open “This computer” and then the CD-ROM (J). Run the ” Grafico Drivers.exe” file to install the drivers.



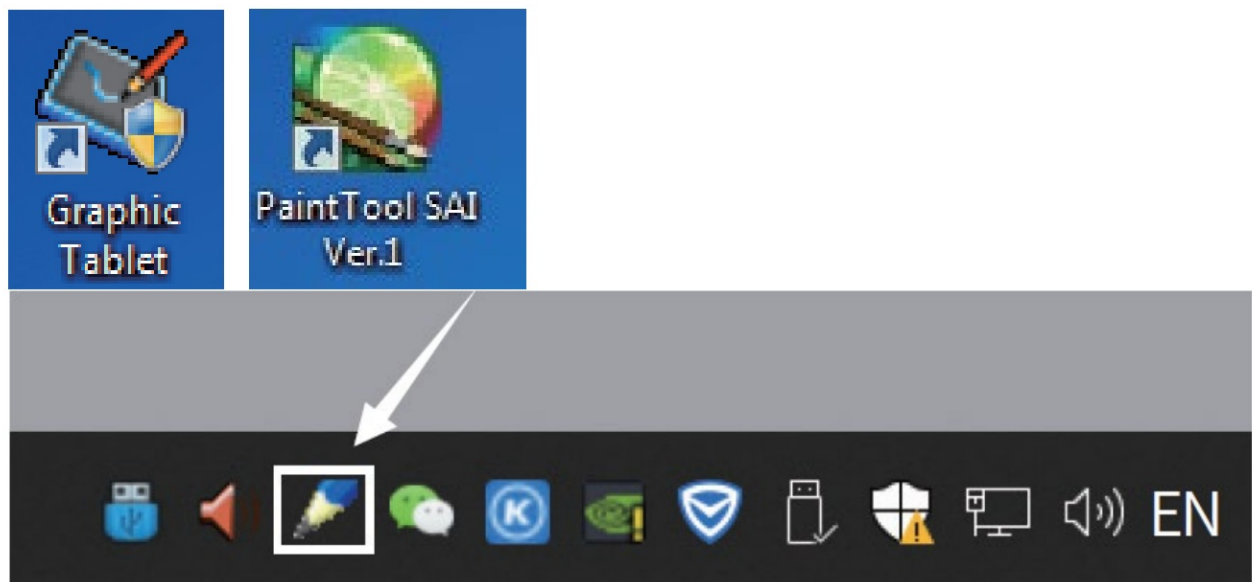
2. Follow the installation instructions step by step.



3. In the last driver installation window you will be asked if you want to download the "Paint Tool SAI" graphics program. Select whether you want to install the program.



4. Select a path to save the download.
5. Once the download is complete, run the "sai.exe" file and follow the steps to install the program.
6. The installation is complete after the icons of the installed programs appear on the desktop.



Remark:

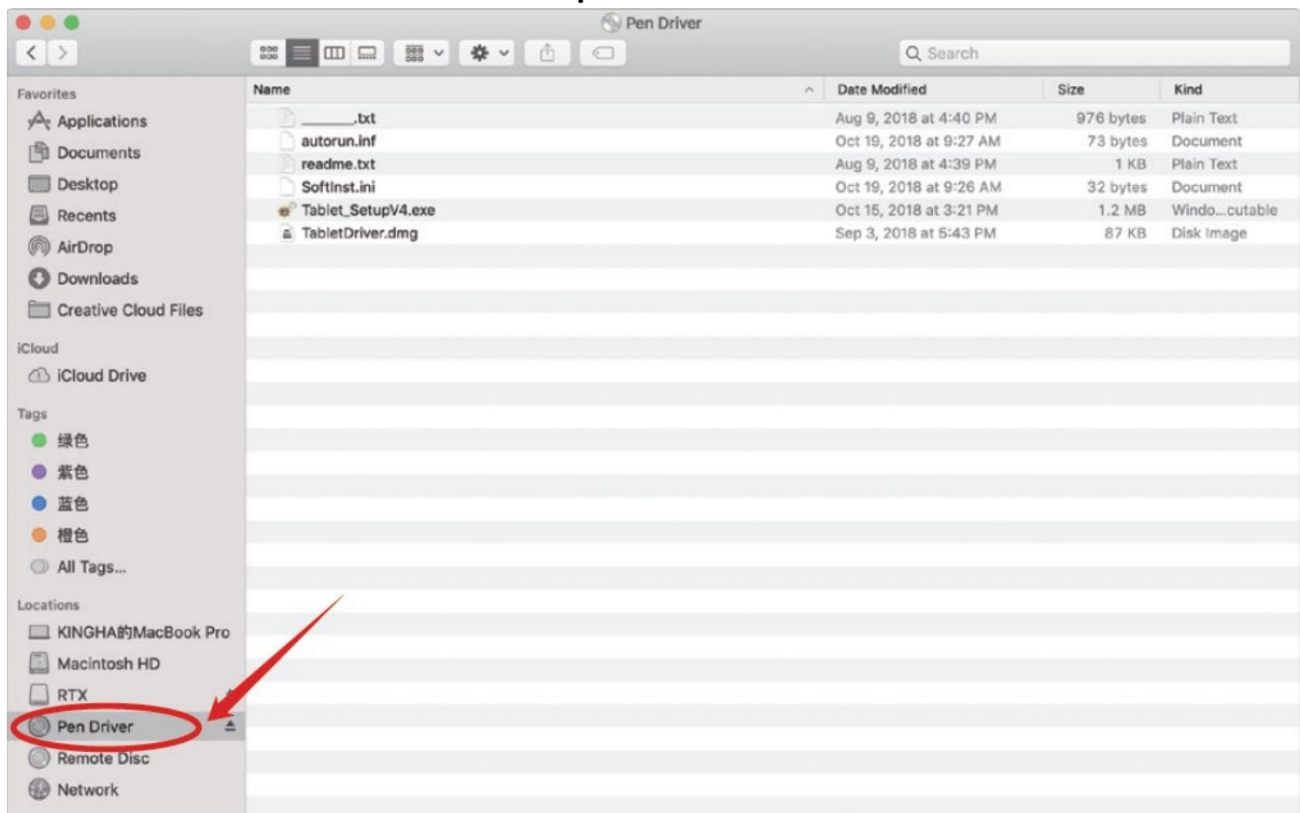
- Do not use a USB HUB or USB extension cable to connect to your PC.
- When not in use, do not allow the pen tip to touch anything and avoid dropping the pen from a height.
- Avoid disorderly mouse cursor movement, or movement without action. Do not use two or more graphics

tablets at the same time.

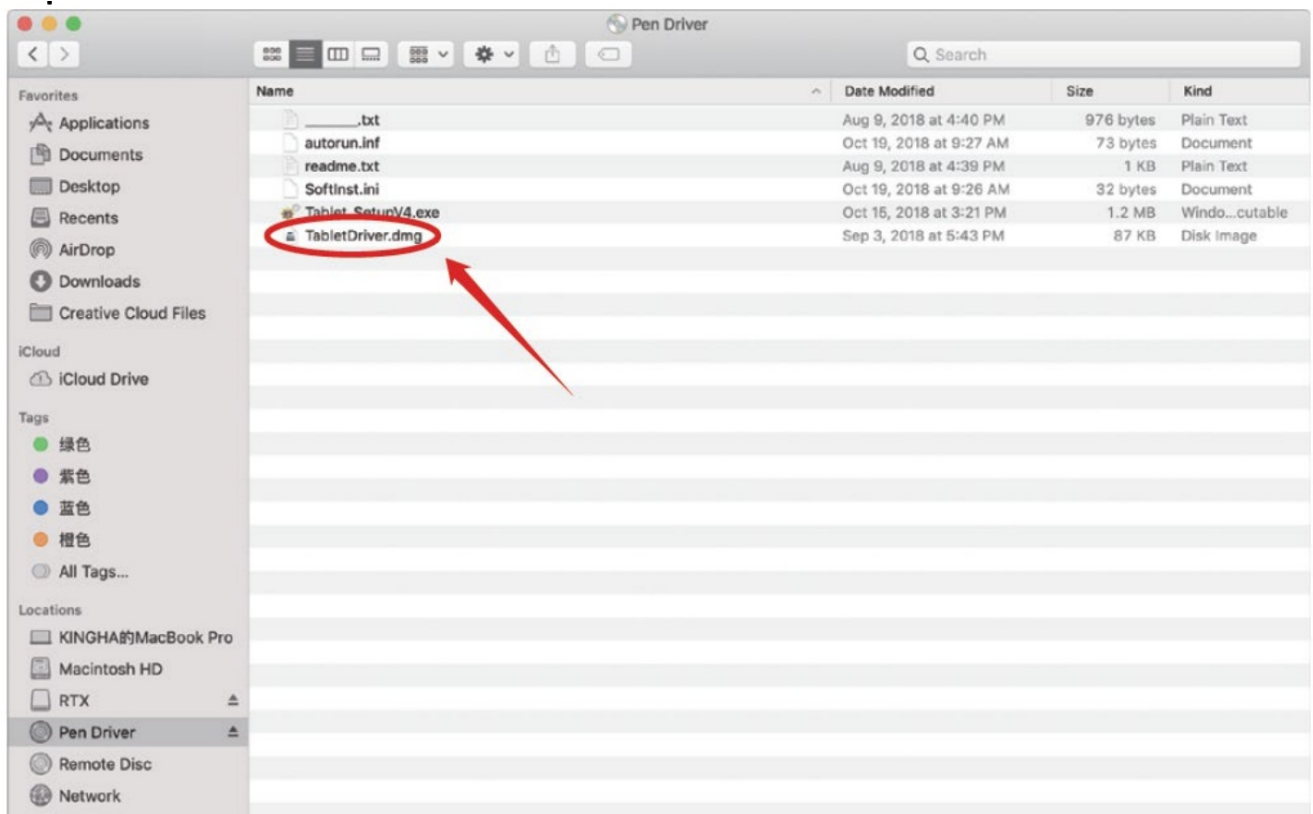
- Please turn off the flicks function in Windows 7.

Installation for MAC OS

1. After connecting the tablet to your Mac device, locate the “Pen Driver” folder and open it.



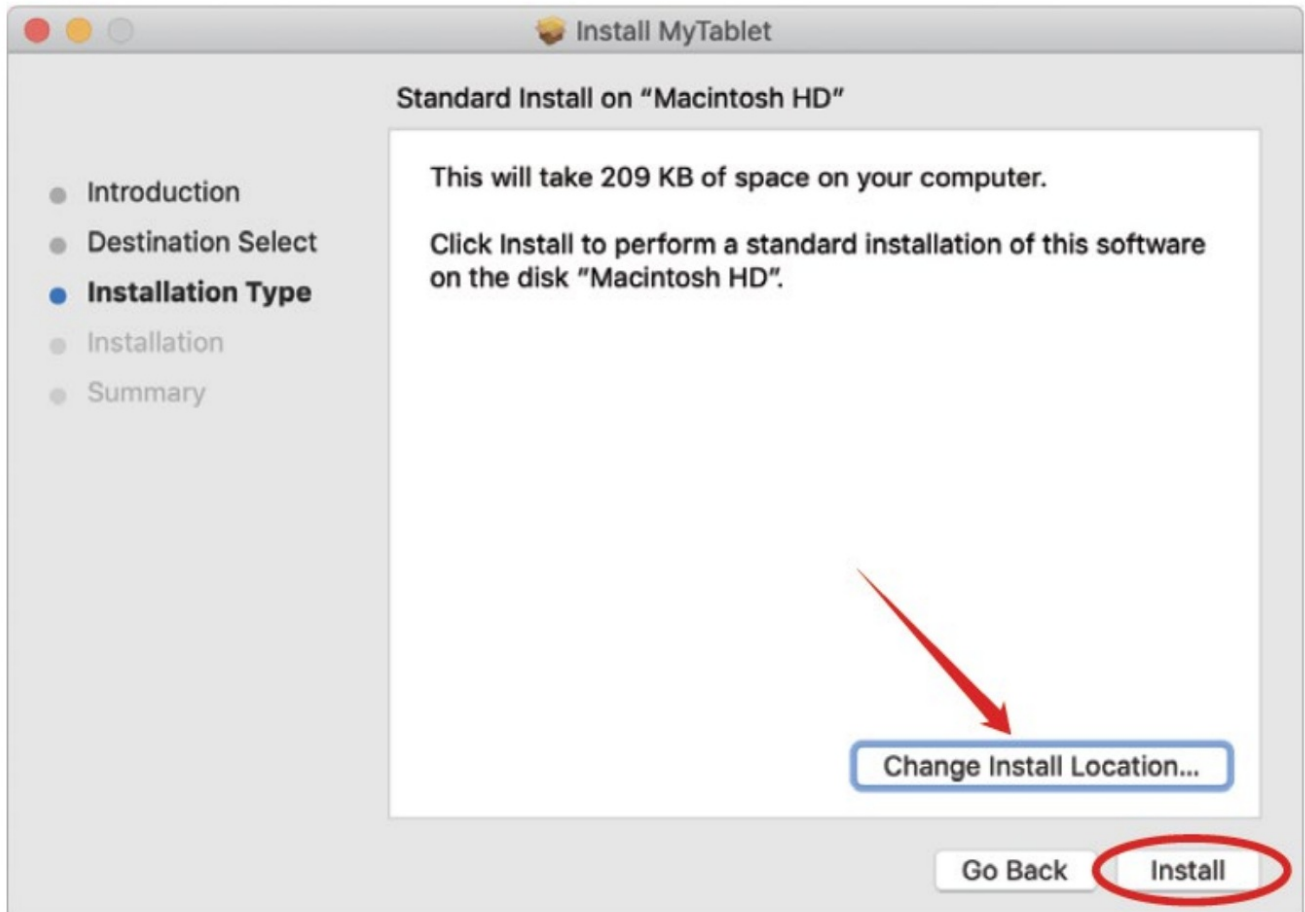
2. Open TabletDriver.DMG



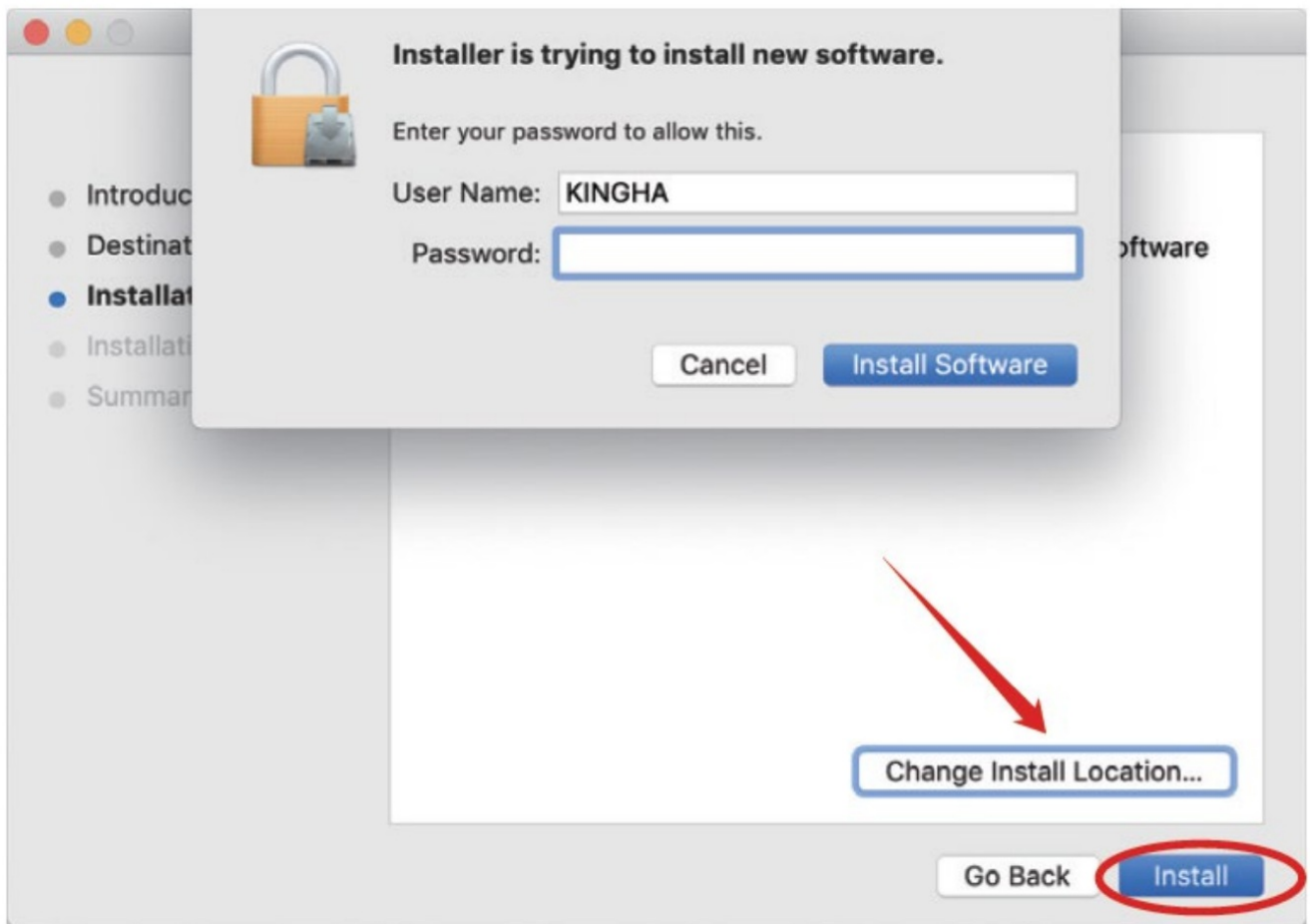


MyTablet.pkg

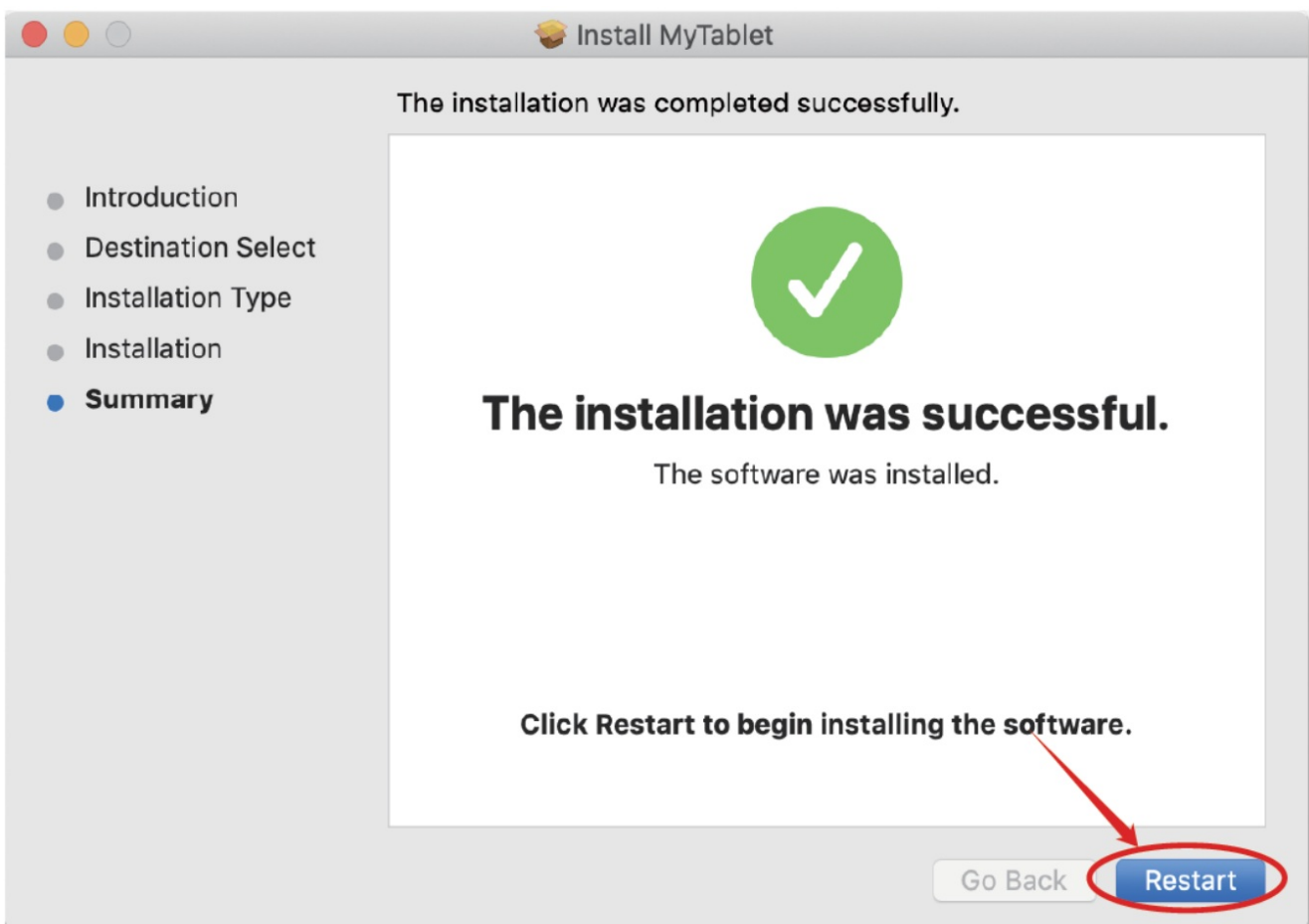
3. Open MyTablet.pkg
4.) Select the installation path and then "Install" to start the installation.



5. Enter your password and continue with the installation.



6. After successful installation, you will be prompted to restart your device.

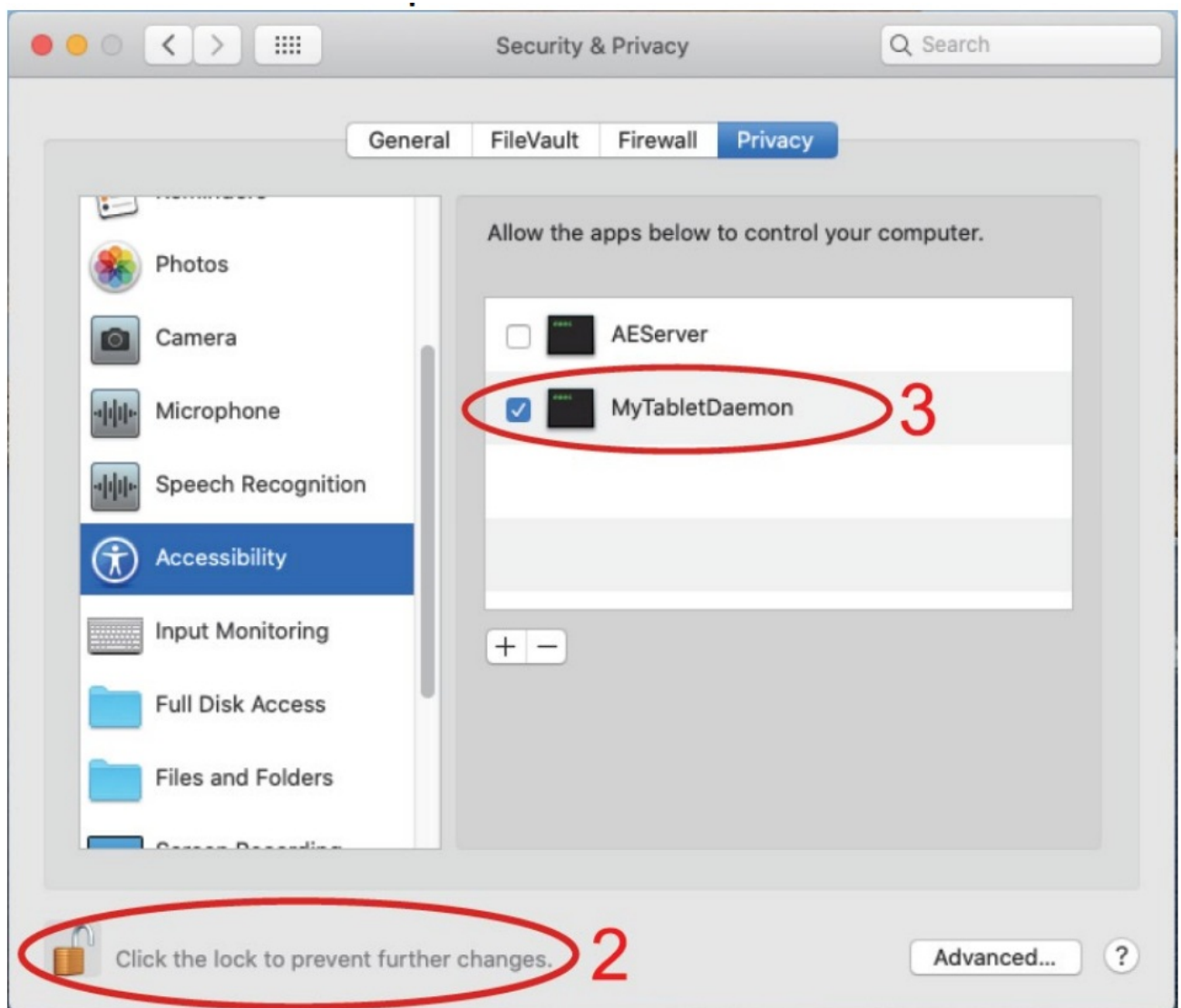


Remark: After installing the driver, make the following settings

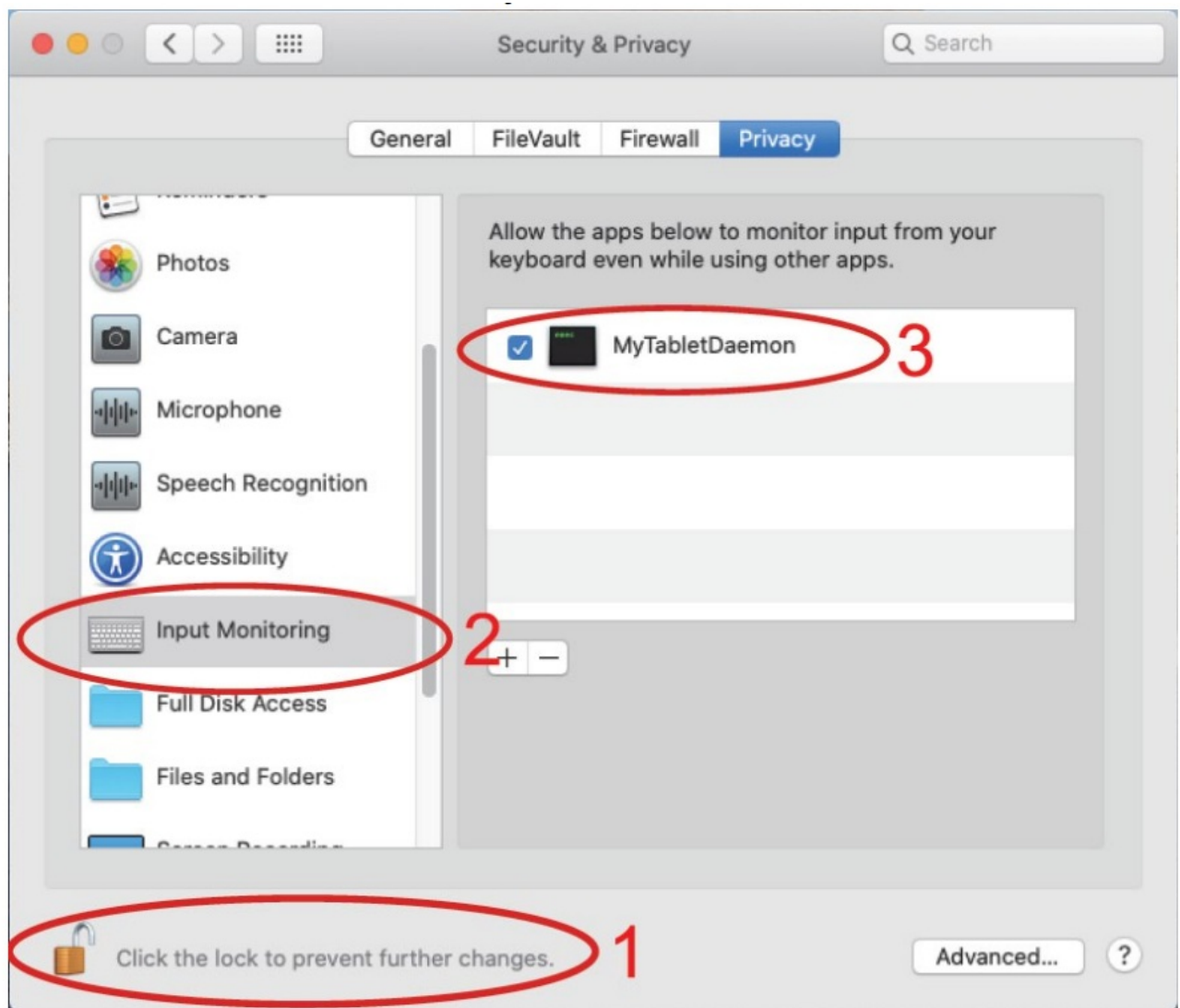
7. Open your MAC OS settings. Search for "Security & Privacy Option".



8. Select the unlock option.



9. Check to enable MyTabletDaemon.



The MAC OS drivers have been successfully installed. Please restart the system.

Important: The app is constantly being updated and developed, individual steps may vary after updates. In case of any problems with the procedure, we recommend contacting the service centre.

Technical support

Contact EVOLVEO Technical Support www.evolveo.com/helpdesk/

The warranty is NOT valid for:

- using the device for other purposes
- installing firmware other than that installed in EVOLVEO Grafico T8 or that can be downloaded manually or automatically from the application
- electromechanical or mechanical damage caused by improper use
- damage caused by natural elements such as fire, water, static electricity, surges, etc.
- damage caused by unauthorized repair



Disposal

The crossed-out container symbol on the product, in the literature or on the packaging means that in the EU all electrical and electronic equipment, batteries and accumulators must be placed in the separate waste stream at the end of their useful life. Do not dispose of these products in unsorted municipal waste.



DECLARATION OF CONFORMITY

Abacus Electric, s.r.o. hereby declares that the EVOLVEO Grafico T8 complies with the requirements of the notes and regulations applicable to this type of instrument

The full text of the Declaration of Conformity can be found at <http://ftp.evolveo.com/CE/>

Copyright © Abacus Electric, s.r.o. www.evolveo.com www.facebook.com/EvolveoCZ

Importer

Abacus Electric, s.r.o.

Planá 2, 370 01, Czech Republic

Producer

Naxya Limited

No.5, 17/F, Strand 50, 50 Bonham Strand, Sheung Wan, Hong

Kong


Made in China

All rights reserved.

Design and specifications are subject to change without notice.

EVOLVEO

Documents / Resources

	<p>EVOLVEO Grafico T8 Eight Keys Graphics Tablet [pdf] Instruction Manual Grafico T8, Eight Keys Graphics Tablet, Graphics Tablet, Eight Keys Tablet, Tablet, Grafico T8</p>
---	--