



EVOLVEO 2020105 Detective WIP 2M SMART Instruction Manual

[Home](#) » [Evolveo](#) » EVOLVEO 2020105 Detective WIP 2M SMART Instruction Manual 

EVOLVEO

MANUAL

MODEL Detective WIP 2M SMART

VERSION / DATE

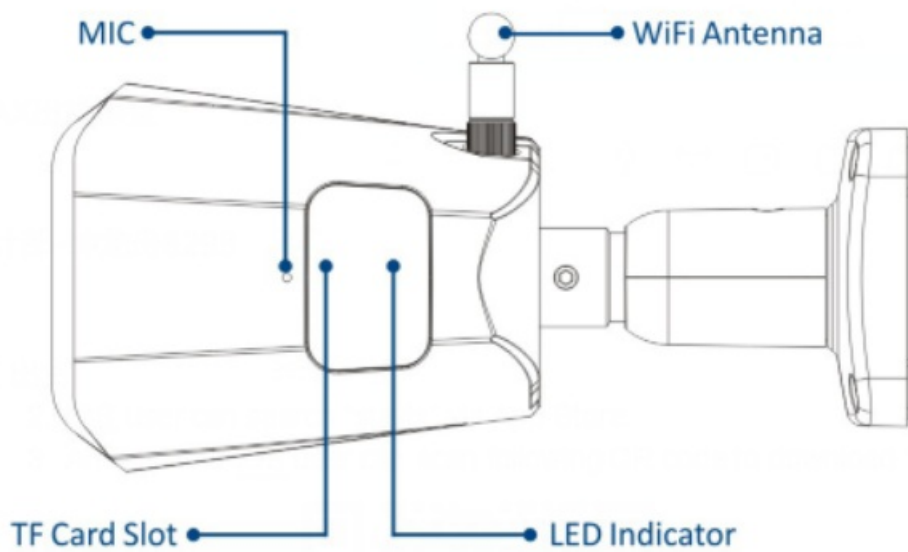
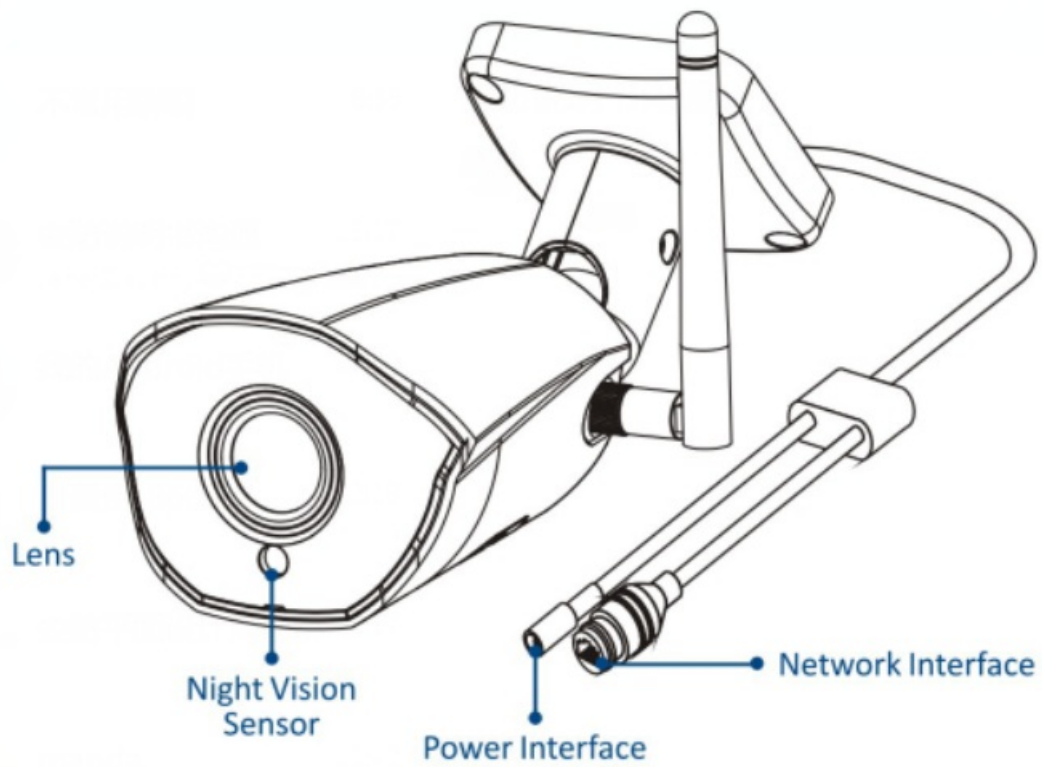
I. / 18. 7. 2022



Contents

- [1 Appearance of the product](#)
- [2 Download the APP](#)
- [3 Registration and login](#)
- [4 APP add device](#)
- [5 Camera installation method](#)
- [6 Function description](#)
- [7 Troubleshooting](#)
- [8 Documents / Resources](#)
 - [8.1 References](#)
- [9 Related Posts](#)

Appearance of the product



Download the APP

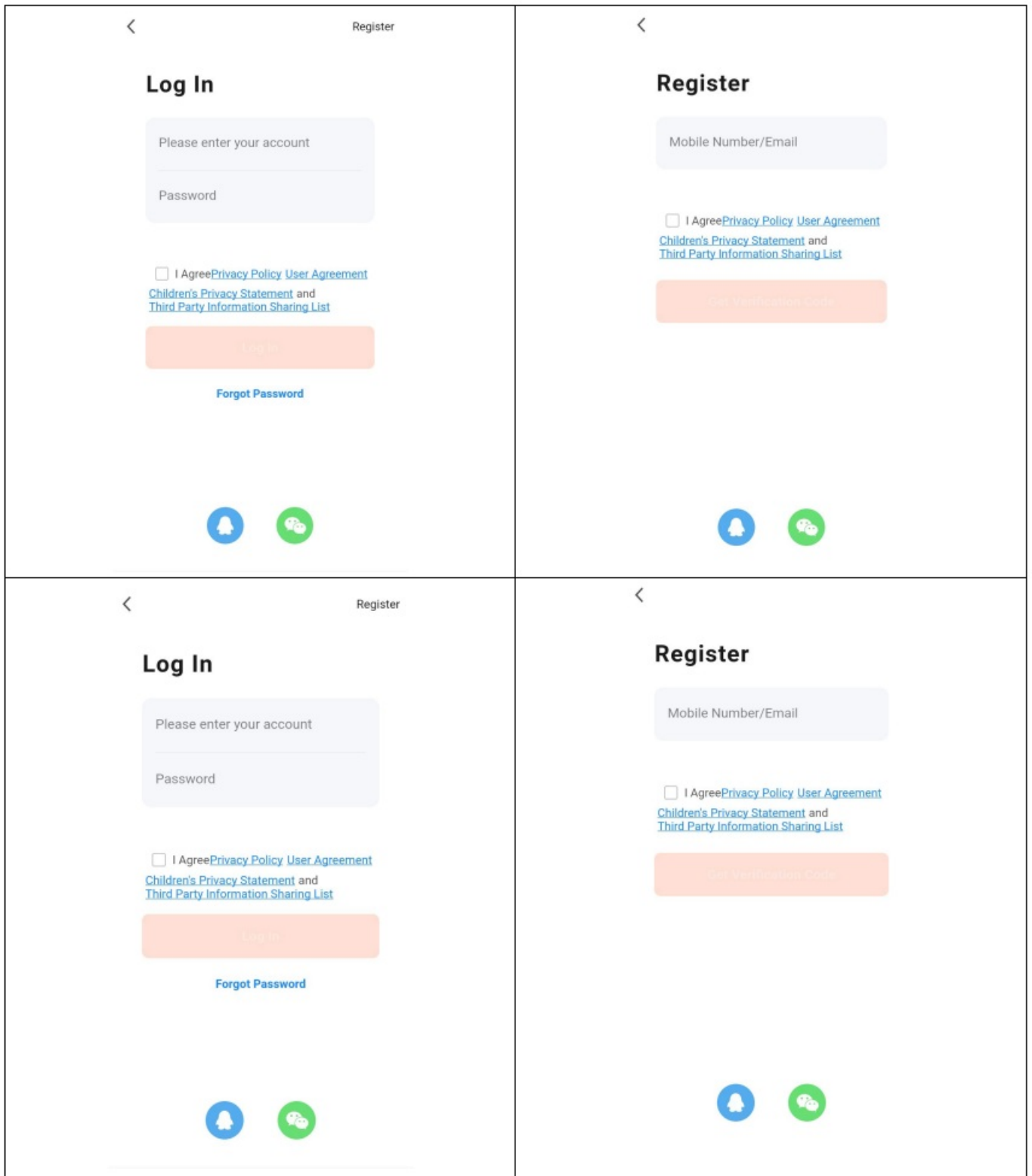
1. Android users can download the “Smart Life” app via the APP Market.
2. An iOS user can download the ” Smart Life ” app via the APP Store.
3. Android and iOS users can scan the following QR code and download the “Smart Life” app.



<https://www.evolveo.com/app/evolveo-terra/>

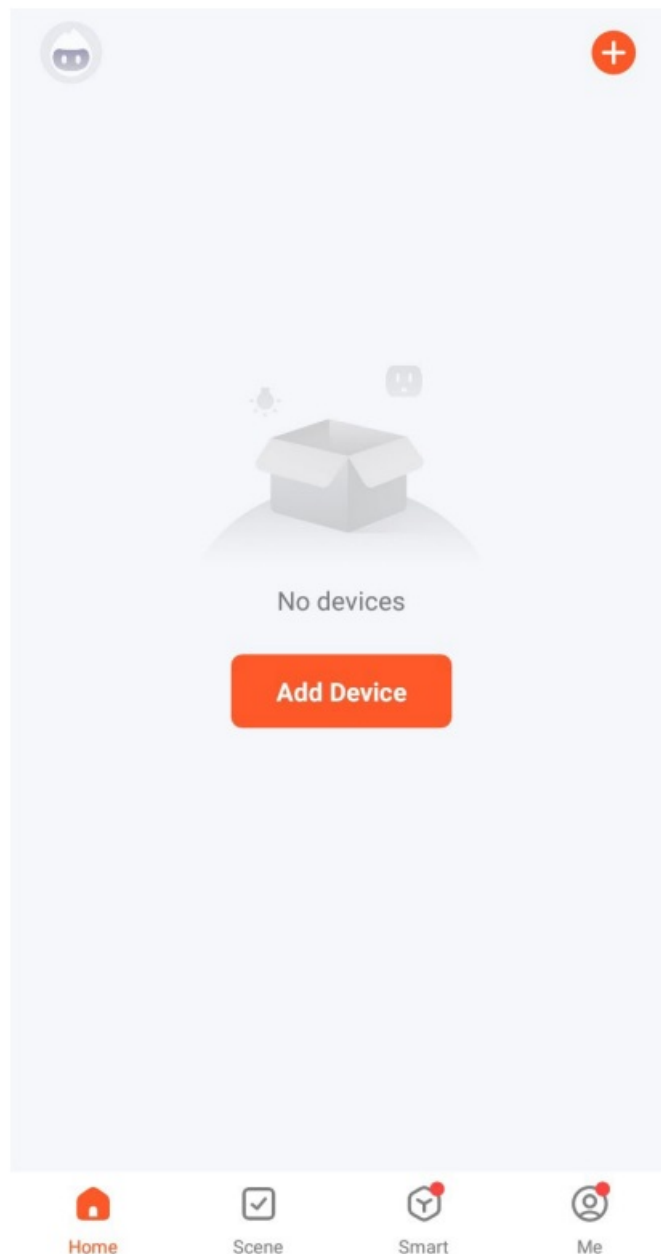
Registration and login

Open the " Smart Life " app and press the "Register" button to register a new account. If you have an account, you can log in with your account and password.



APP add device

Click the “+” or “Add Device” button on the home page as shown below:

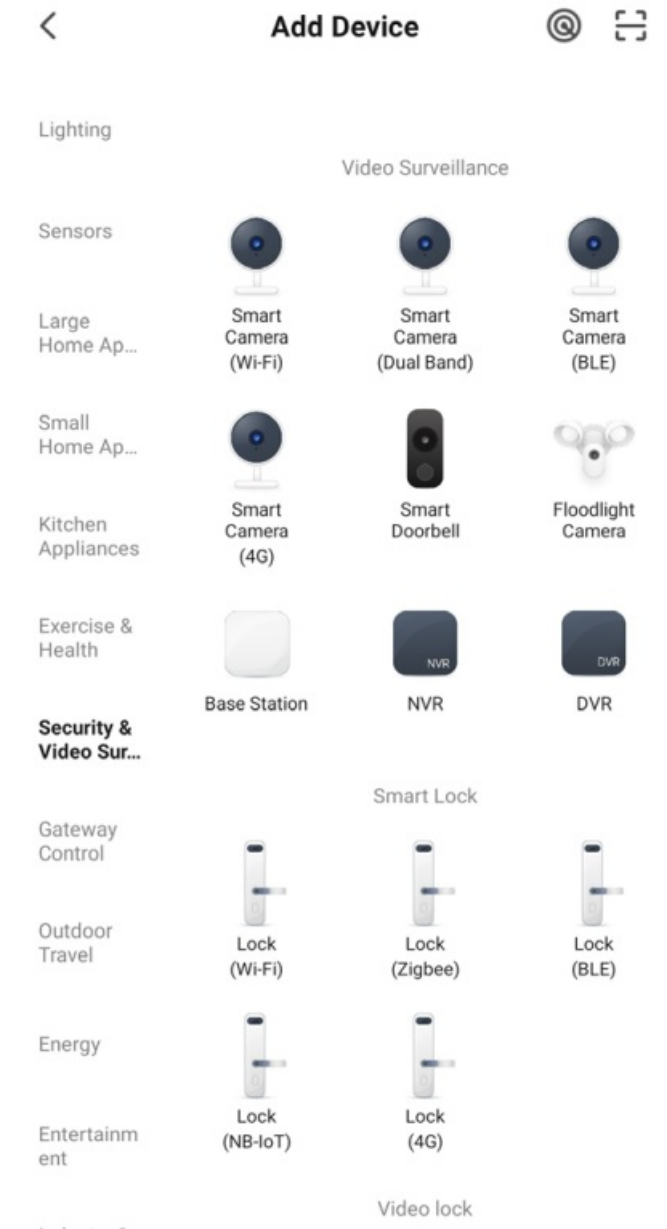


Method 1: Equipment for wired connection

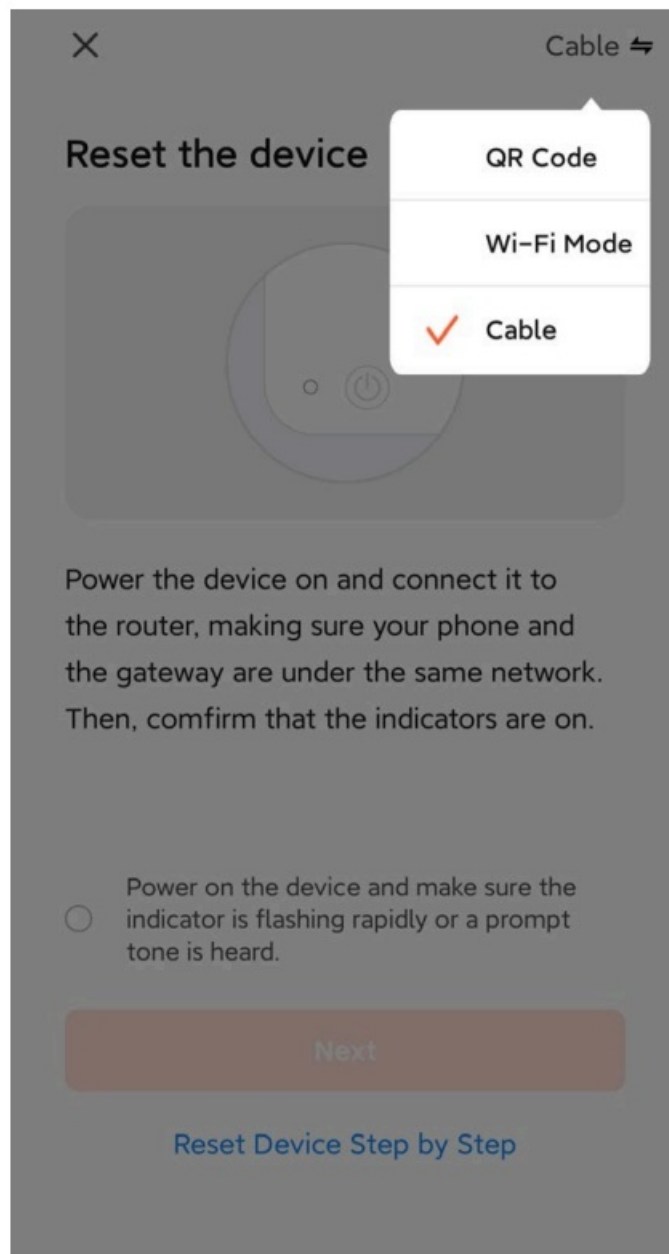
Prerequisite: The mobile phone and the IPC device were connected to the same router.

1. Add manually

- 1) Select "Security and video surveillance" – "Smart camera (Wi-Fi)".



2) Select Cabel from the menu in the top right corner, turn on the device, connect the device to your home router with the network cable and check if the indicator light is on. Then click on the "Next" button.

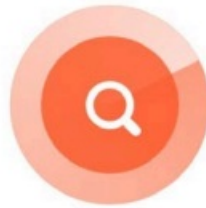


The search process can take up to two minutes, do not perform any operations during this time.



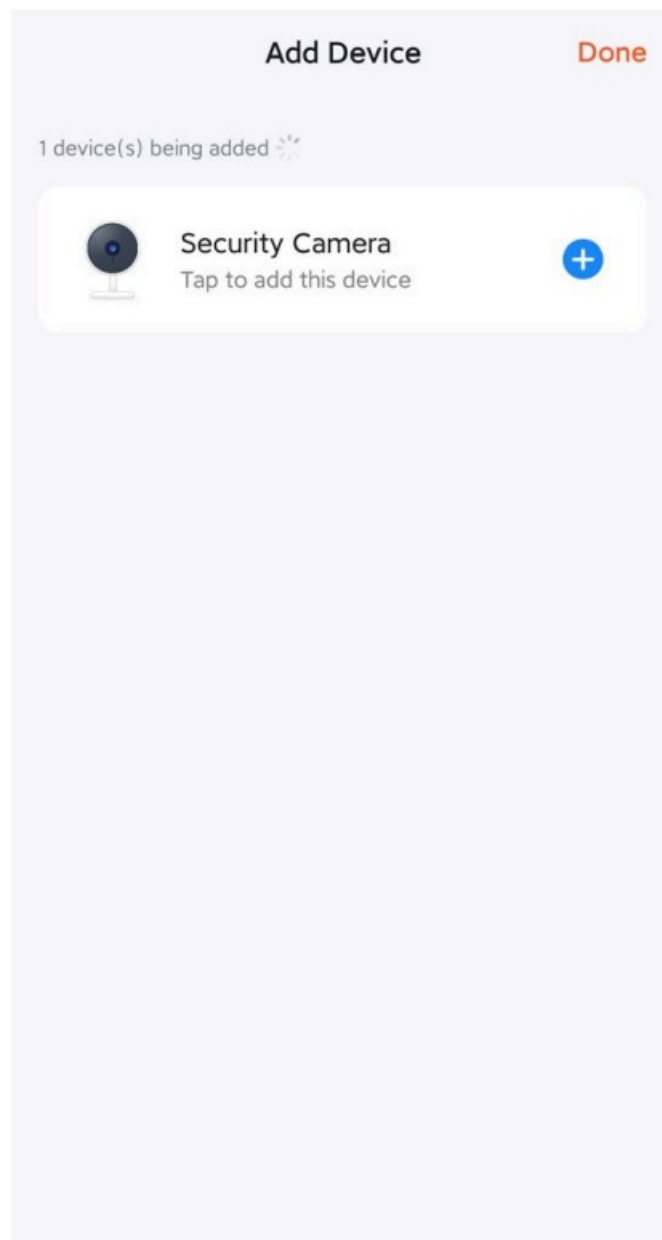
Adding device...

Power on the device.

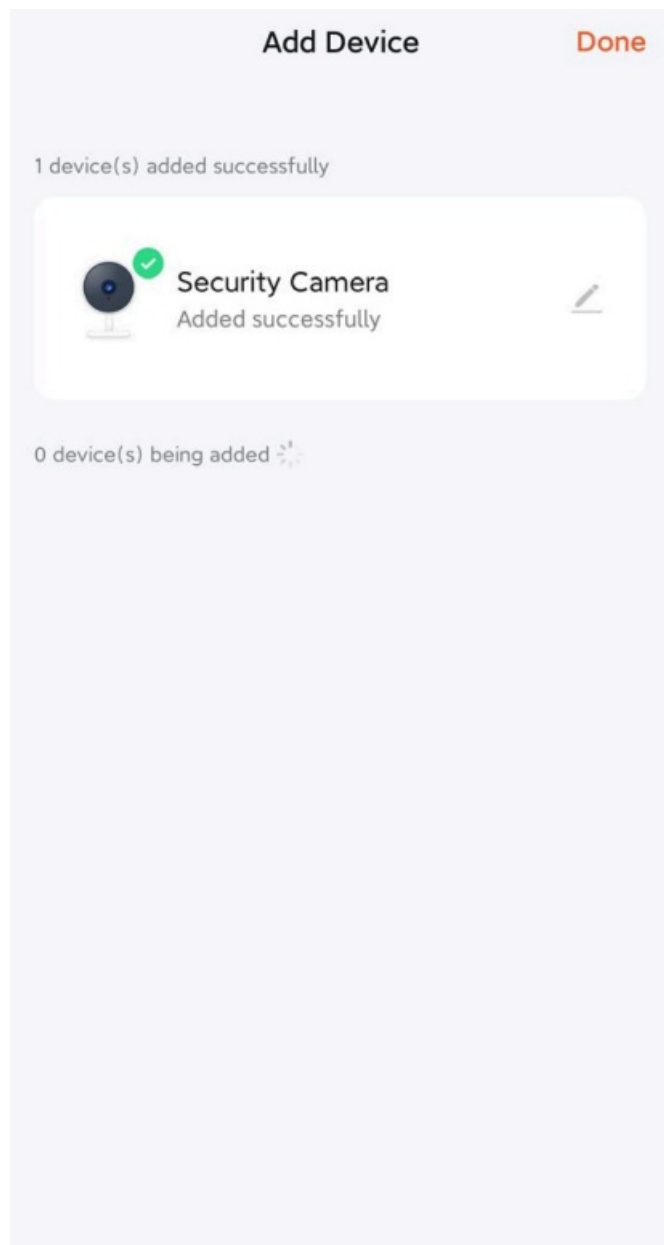


01:59

3) Click the + sign to add the device.



4) When the connection is successful, select the device name and click Done.



2. Automatic scanning

- 1) Make sure your device has entered pairing mode. Click on the "Add" button.



Add Device



Searching for nearby devices. Make sure your device has entered [pairing mode](#).

Discovering devices...



Add

Add Manually

Electrical

Socket

Lighting



Plug
(BLE+Wi-Fi)



Socket
(Wi-Fi)



Socket
(Zigbee)

Sensors



Socket
(BLE)



Socket
(NB-IoT)



Socket
(other)

Large
Home A...

Small
Home A...

Power Strip

Kitchen
Appliances



Power Strip
(BLE+Wi-Fi)



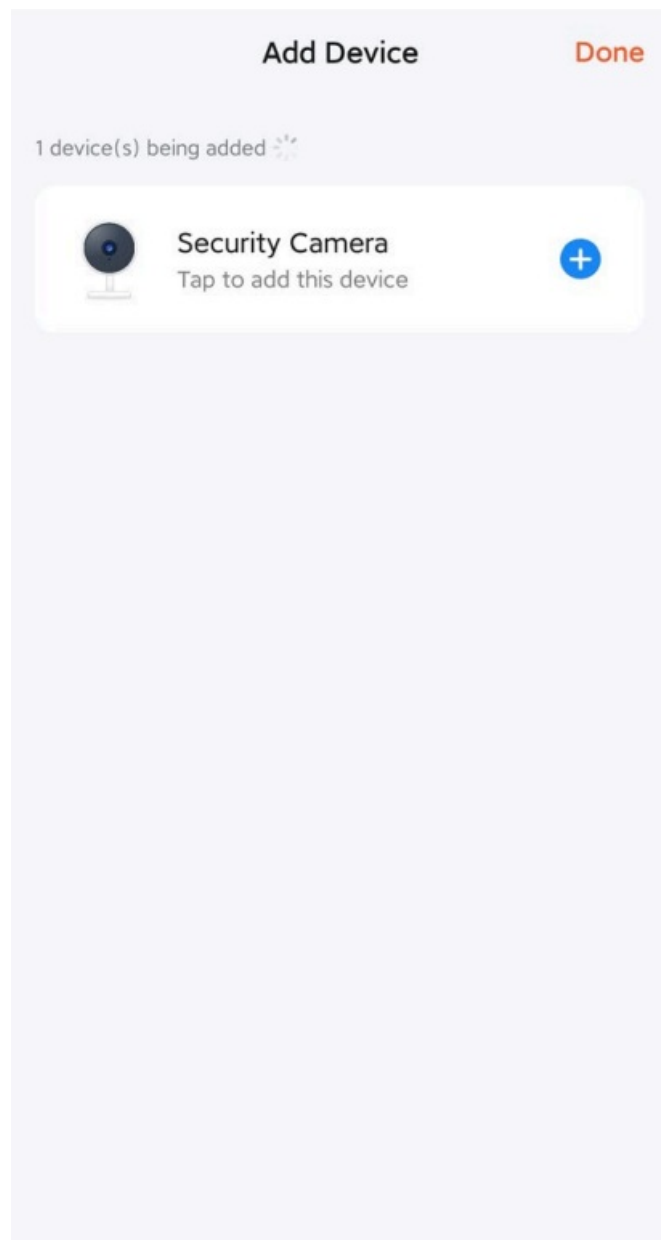
Power Strip
(Wi-Fi)



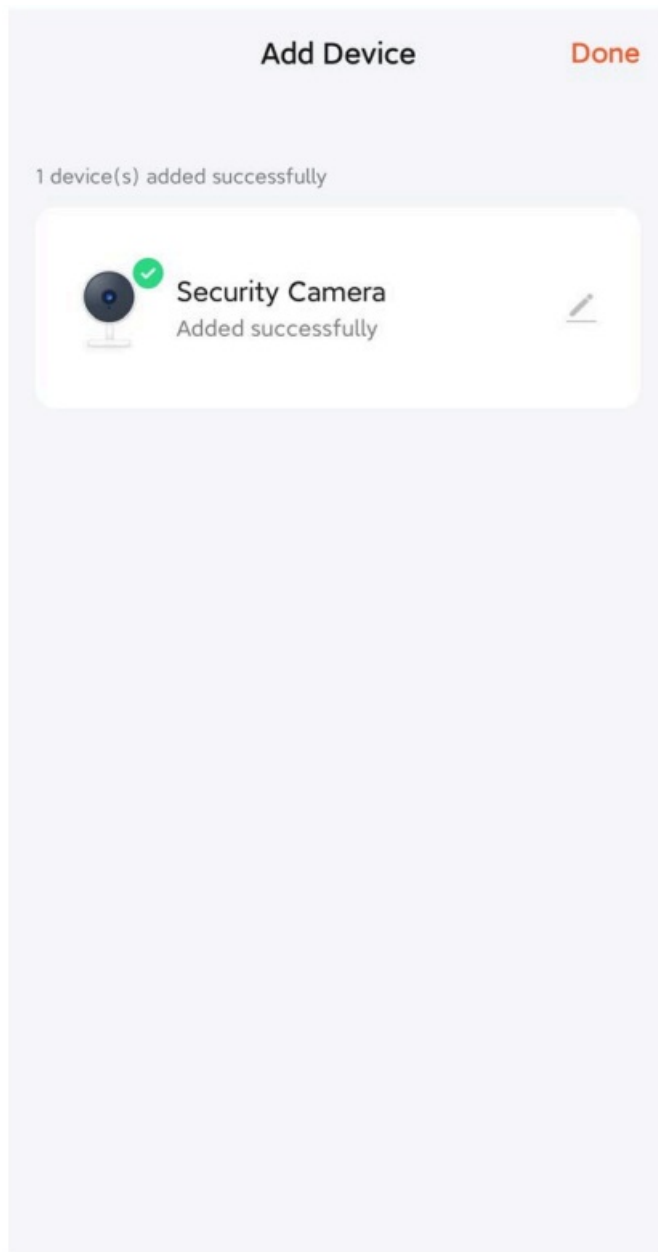
Power Strip
(Zigbee)

Exercise &

2) Click the + sign to add the device.



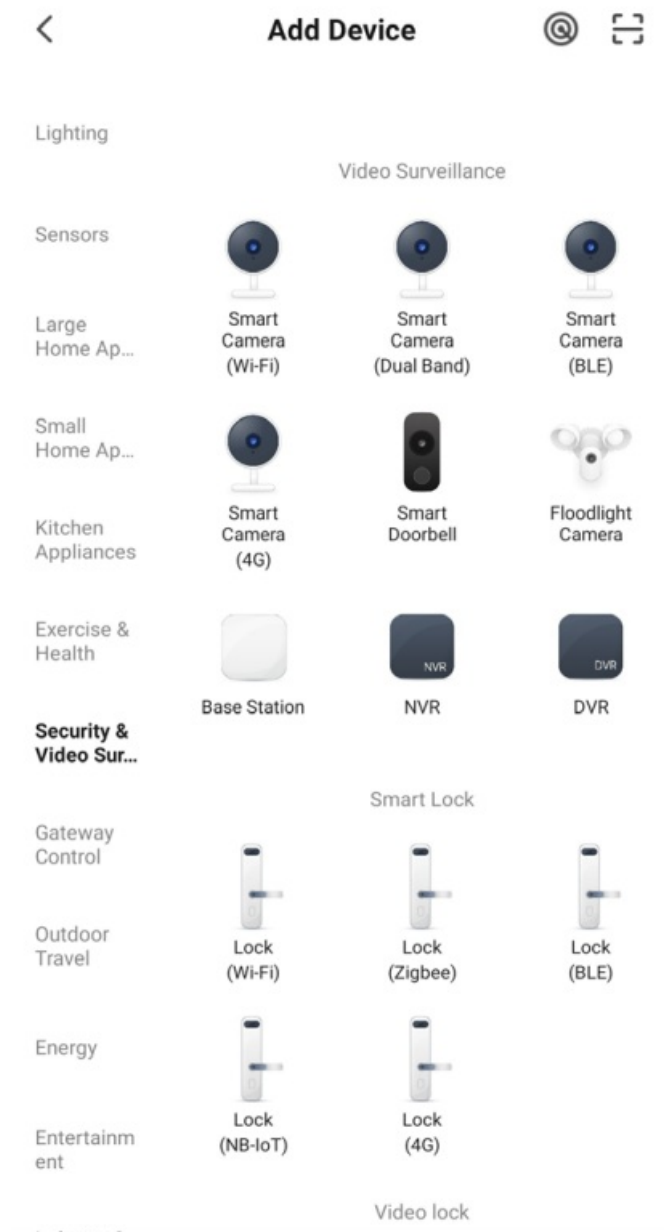
3) When the connection is successful, select the device name and click Done.



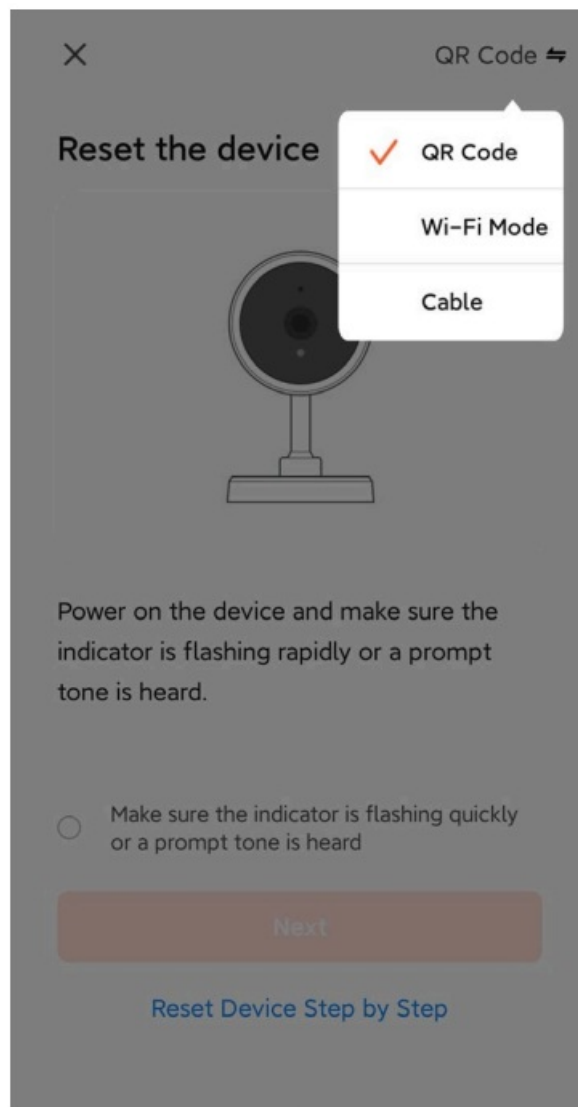
Method 2: Wireless binding device

Prerequisite: The device does not need to be connected to the mains cable.

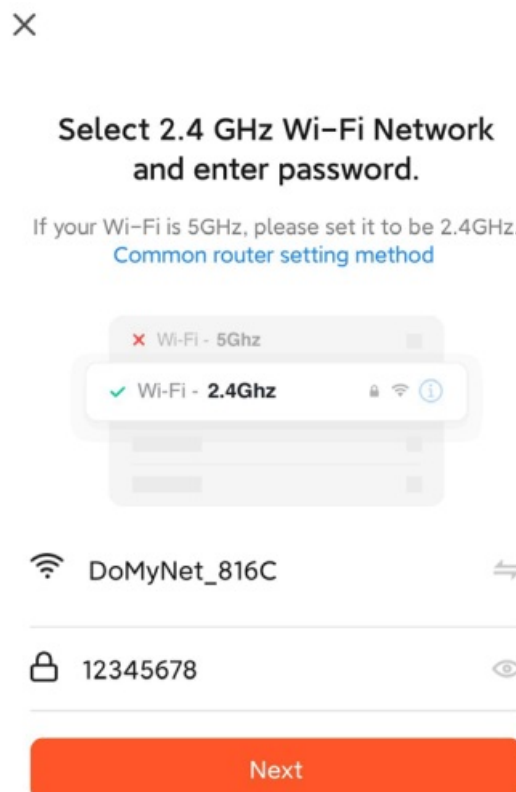
1. Select " Security and video surveillance"- "Smart camera(Wi-Fi)".



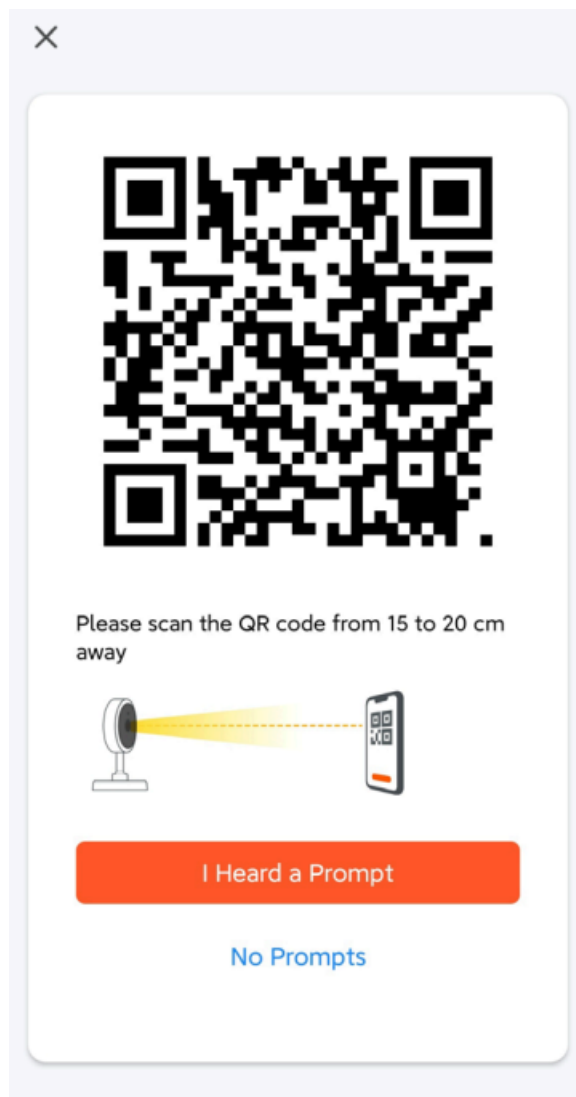
2. Select the QR code in the top right corner. If the light on the camera is flashing, click Next.



3. Enter the WiFi name and password to connect your device to the WiFi hotspot, and click Next.



4. Scan the QR code on the app screen using the camera lens. Once you hear the voice, the recognition is successful. Click on confirmation below.



5. After confirmation, it will announce that it is connecting to the LAN and enter the countdown interface.



Adding device...

Keep the network stable.



01:55



Scan
devices.

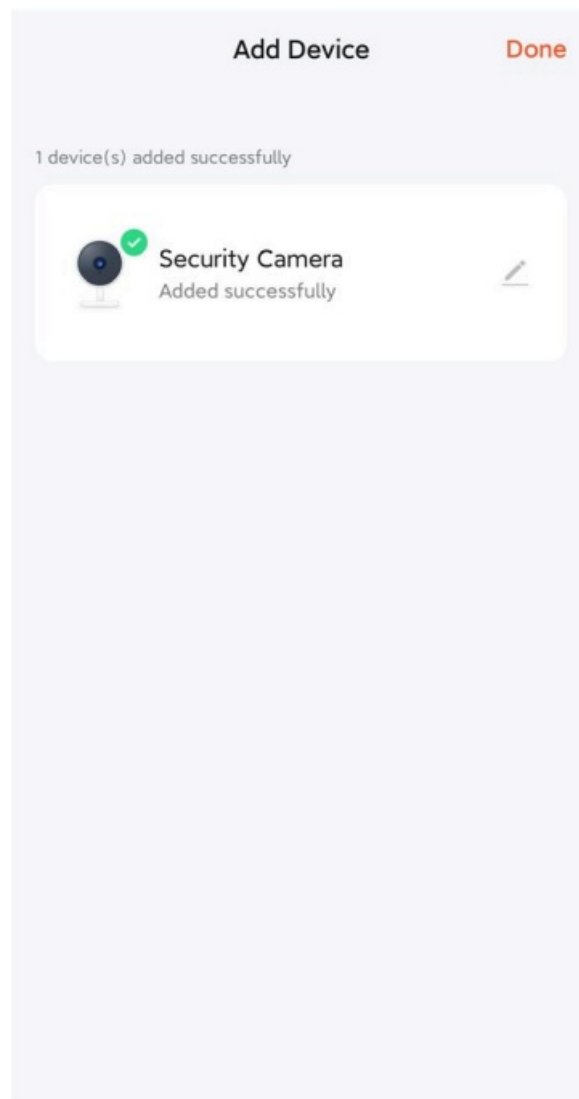


Register on
Cloud.



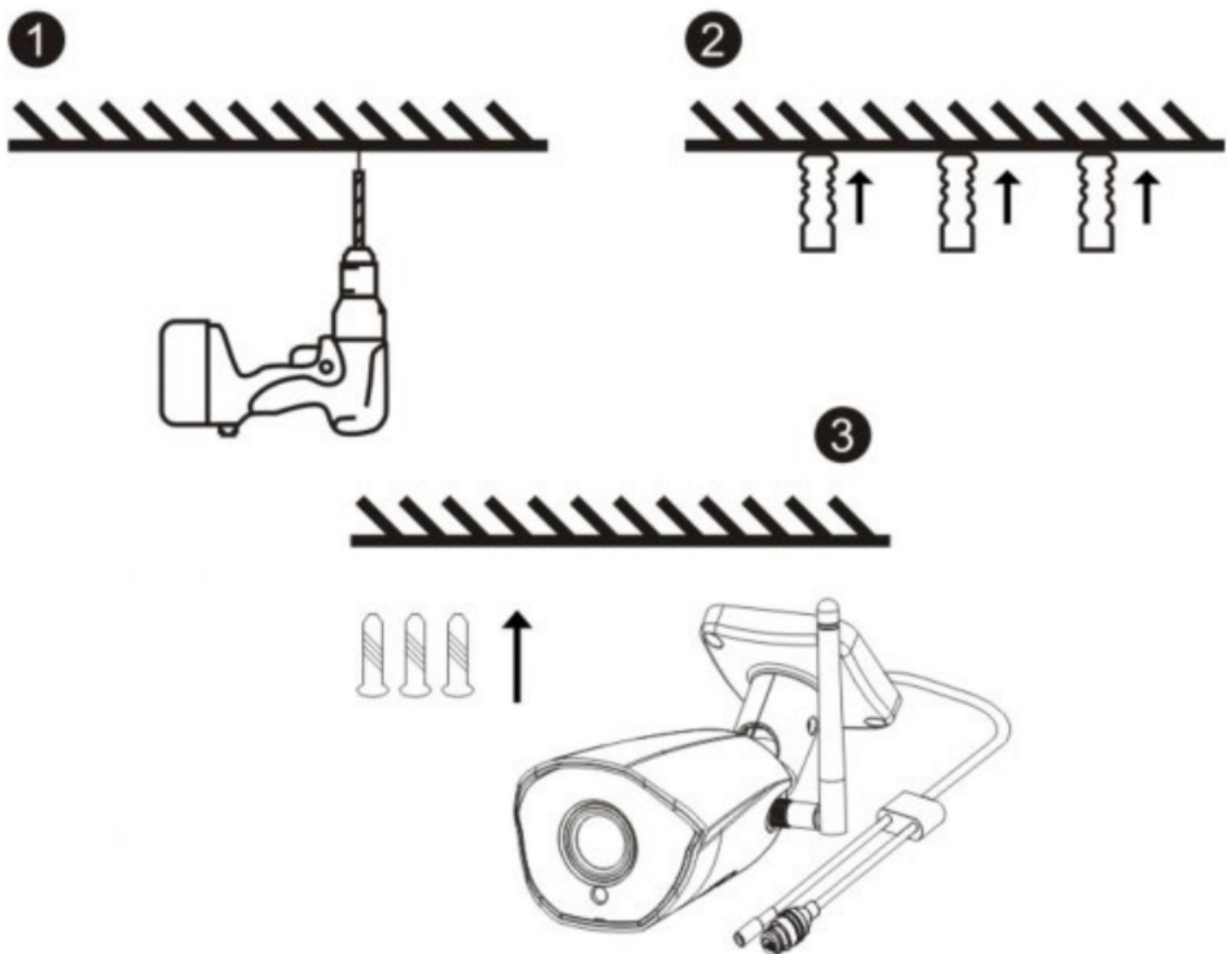
Initialize
the device.

6. After successful binding, select the device name and click Done.



Camera installation method

1. Drill three guide holes in the wall panels according to the position of the hole in the camera base;
2. Insert dowels into the holes;
3. Align the hole in the camera base with the dowels and then screw the device in.



Function description

1. Image quality: resolution 1080P (1920*1080).
2. Field of view: 101° wide-angle lens, wide field of view.
3. Infrared night vision: the camera automatically switches on the infrared night vision function depending on the ambient light; when switched on, the image is displayed in black and white at a distance of 15 metres.
4. Video storage: recording and screenshots, support for long-term online recording and high-resolution screenshots, and support for storage and playback on a MicroSD card. Remark: When the MicroSD card is full, newly created video files will automatically overwrite the oldest video files.
5. Motion detection: The camera supports motion detection and alarm function. If there is an intrusion in the detection area, alarm information is sent to the mobile phone in time.
6. Sound MIC: the camera supports a built-in microphone (Microphone) and audio input. Through the app, you can not only watch the video in real time, but also listen to the audio transmitted from the camera.
7. Cloud storage: If you purchase cloud storage, even if the camera is stolen or damaged, the footage will not be lost in the cloud. Remark: Cloud storage is provided by a third party and Abacus s.r.o. is not responsible for the data you store on the cloud!!!

Troubleshooting

1. **Camera LED indicator and buzzer status:**

Status	LED light	Speaker
Starting the system	The blue light is on	No
Waiting for the distribution network	Blue light flashing	Di (three short notes)
Scanning a QR code	Blue light flashing	No
Successful scanning of the QR code	The blue light is on	Di (short tone)
Wi-Fi connection	The blue light is on	No
Successful connection to a WiFi network	The blue light is on	No
Failed to connect WiFi	Blue light flashing	Di (four short notes)
Reset success	Blue light flashing	Di (short notes)

2. Make sure the camera is connected to a 2.4GHz WiFi network.

5G WiFi is not supported. Make sure the WiFi signal of the wireless router connected to the camera is within range.

3. Is the camera temperature normal?

When the camera is working normally, a slight temperature rise will occur, which is a normal phenomenon.

Feel free to use it. Operating temperature range: -10 °C to +50 °C.

4. What do I need to look out for when using the camera?

To achieve better night vision images, do not mount the camera near or point it at objects with reflective surfaces such as glass, so that will not cause the screen to be bright near or white in the distance.

The warranty does NOT cover:

- using the equipment for purposes other than those for which it is designed,
- installing firmware other than that installed on the device
- electrical or mechanical damage caused by improper use
- damage caused by natural elements such as water, fire, static electricity, power surges, etc.
- damage caused by repairs carried out by an unqualified person
- illegible serial number
- battery capacity drops after 6 months of use (6 month battery life guarantee)



Disposal

The crossed-out container symbol on the product, in the accompanying documentation or on the packaging reminds you that in EU countries, all electrical and electronic equipment, batteries and accumulators must be disposed of separately at the end of their useful life as part of sorted waste. Do not dispose of these products in unsorted municipal waste.



DECLARATION OF CONFORMITY

The company Abacus Electric, s.r.o. hereby declares that the product EVOLVEO Detective WIP 2M SMART meets the requirements of the standards and regulations that are relevant for the type of equipment.

The full text of the Declaration of Conformity can be found at <ftp://ftp.evolveo.com/ce>

Importer / Importer / Importer / Importer

Abacus Electric, s.r.o.

Planá 2, 370 01, Czech Republic

Producer / Producer / Manufacturer / Gyártó

Naxya Limited

No.5, 17/F, Strand 50, 50 Bonham Strand, Sheung Wan, Hong Kong

Made in China

Copyright © Abacus Electric, s.r.o.

www.evolveo.com

www.facebook.com/EvolveoCZ


All rights reserved.

The appearance and technical specifications of the product are subject to change without notice.

Camera Power Adaptor		
Information published	Value and precision	Unit
Manufacturer's name or trade mark, commercial registration number and address	Zhuhai Bright Source Electronic Science&Technology Co.,LTD	—
Model identifier	CYHO12S012V1000E	—
Input voltage	100-240Vac	V
Input AC frequency	50/60Hz+/-3Hz	Hz
Output voltage	11.4-12.6Vdc	V
Output current	1A	A
Output power	12W	W
Average active efficiency	83%	—
Efficiency at low load (10 %)	83%	—
No-load power consumption	0.1W	W

EVOLVEO

Documents / Resources

	<p>EVOLVEO 2020105 Detective WIP 2M SMART [pdf] Instruction Manual 2020105 Detective WIP 2M SMART, 2020105, Detective WIP 2M SMART, WIP 2M SMART, 2 M SMART, SMART</p>
---	---

References

- [Index of /ce](#)
- [EVOLVEO.com | official eshop brand](#)

