



# EVOLUTION POWER SPOTS Solo 2 DL GPS Lap Timer Installation Guide

## Contents

- [1 Solo 2 DL GPS Lap Timer](#)
- [2 AIM Data Log Instructions](#)
- [3 RaceStudio 3 Install](#)
  - [3.1 Data Logs Steps](#)
  - [3.2 File selection option 1](#)
  - [3.3 File selection option 2 “if RaceStudio2 Analysis is installed”](#)
- [4 Documents / Resources](#)
  - [4.1 References](#)
- [5 Related Posts](#)

## Solo 2 DL GPS Lap Timer



## AIM Data Log Instructions



Solo 2 DL GPS Lap Timer

WE'D LOVE TO HEAR YOU – LEAVE A REVIEW & STAY CONNECTED

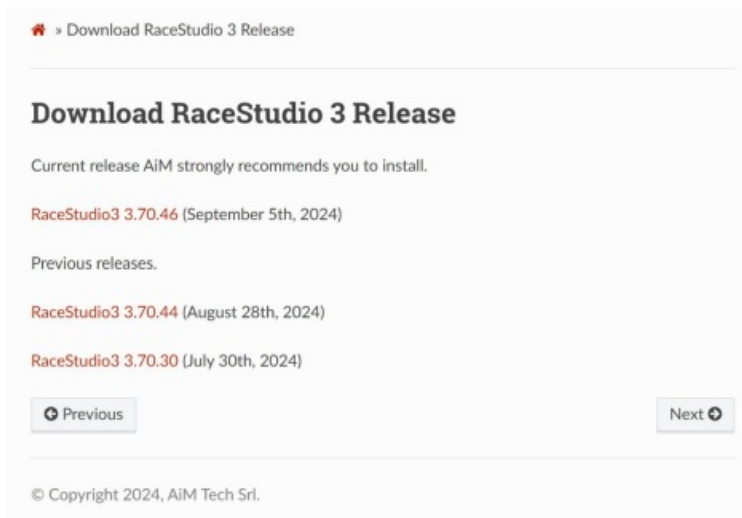


## RaceStudio 3 Install

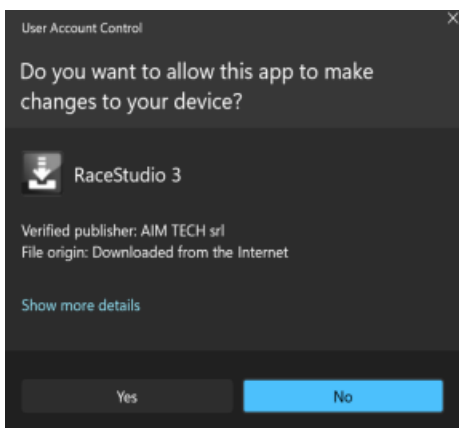
1. Navigate to <https://www.aim-sportline.com/en/sw-fw-download.htm>
2. Select Download for RaceStudio 3

SOFTWARE					
	Spark	Ver. 1.2.81	<a href="#">DOWNLOAD</a>	Sep, 4 <sup>th</sup> 2024	<a href="#">RELEASE HISTORY</a> <a href="#">WHAT'S NEW</a>
	RaceStudio 3	Ver. 3.70.46	<a href="#">DOWNLOAD</a>	Sep, 5 <sup>th</sup> 2024	<a href="#">USER MANUAL</a> <a href="#">RELEASE HISTORY</a> <a href="#">WHAT'S NEW</a>
	RaceStudio 3 Beta	Ver. 3.70.45	<a href="#">DOWNLOAD</a>	Aug, 29 <sup>th</sup> 2024	<a href="#">USER MANUAL</a> <a href="#">RELEASE HISTORY</a> <a href="#">WHAT'S NEW</a>

3. Select the latest version



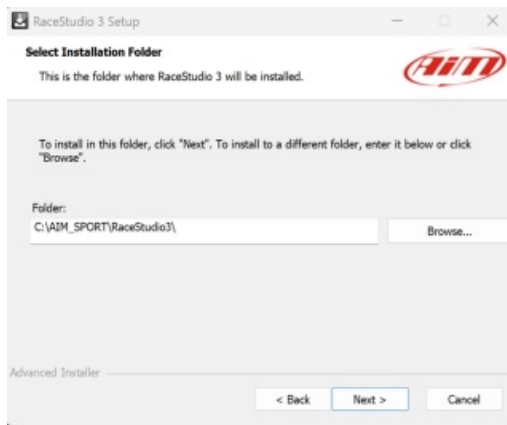
4. Navigate to your pcs downloads folder
5. Double click or right click and select open to run install
6. Select Yes to allow install to run



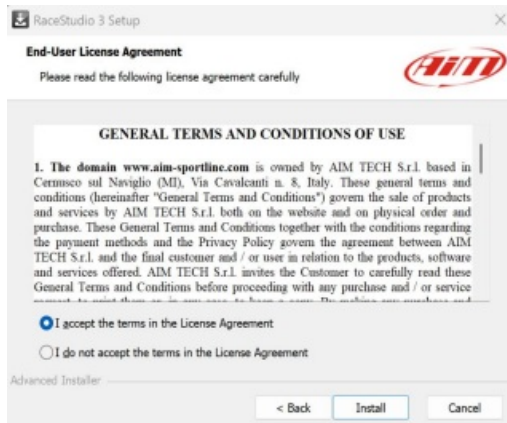
7. Select Next when install wizard appears



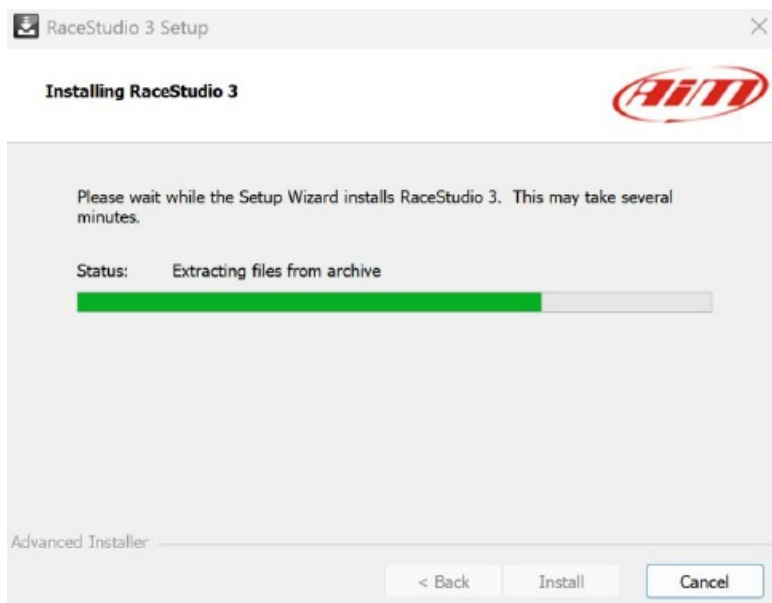
8. Select Next to leave default install folder location



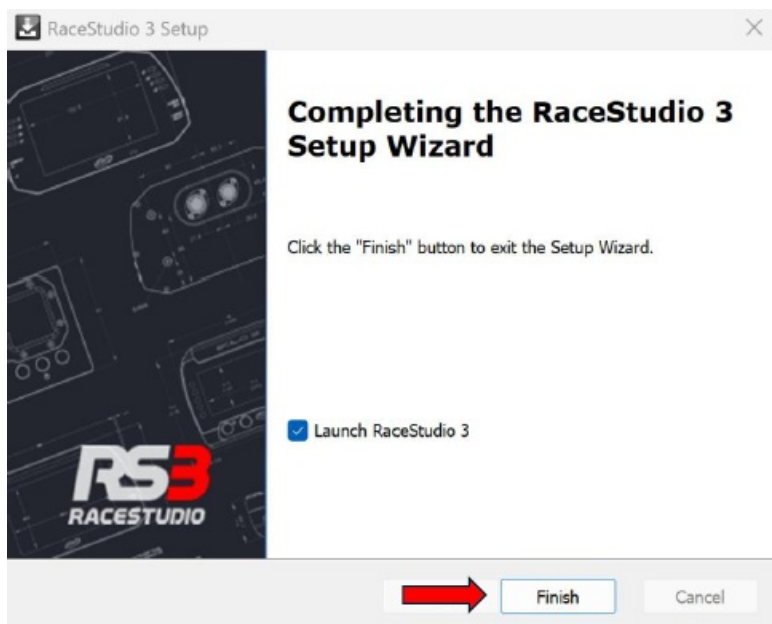
9. Select Radial to accept terms and select Install to begin install process.



10. Wait for install to complete



11. Select Finish to close and launch RaceStudio3



## Data Logs Steps

1. Make sure AIM is fully charged (50% or higher)
2. Connect AIM to diagnostic port
3. Start vehicle (aim will automatically turn on)
4. Wait for track search to complete
  - a. Or skip by pressing the farthest right button on the AIM twice in session to exit
5. Verify log is showing in bottom right corner
6. Make a pull/pass/run
7. Shut vehicle off (AIM will stay on for 10 minutes)
8. Follow Data Log Retrieval steps to download and send data log to be analyzed

Thank you for choosing Evolution Powersports products. If you require further assistance, please call our Tech Support @ [715-247-3862](tel:715-247-3862)

Note: This product is exempt from the emission standards and related requirements of 40 C.F.R. § 1051 as provided by 40 C.F.R. § 1051.620, and California law [e.g., vehicle code §§ 27156 and 38391]. This product is sold only for use in connection with EPA certified, purpose-built, nonroad vehicles used solely for closed course, nonroad competition/racing and not used for any recreational purpose or on public highways or right of ways maintained by and open to the public. This product is sold only in connection with machines that do not fall under state and/or federal noise or emission standards/regulations. Purchasers who/that purchase this product represent and warrant that the product is purchased only in connection with EPA -certified, emission-regulations-exempt and noise regulations-exempt competition/racing vehicles as interpreted under applicable state and/or federal law. Questions: Call Evolution Powersports at [715-247-3862](tel:715-247-3862).

## Data Log Retrieval Steps

1. Open Race Studio 3
2. Click on WiFi icon at top right-hand corner
3. Click connect on your AIM
4. Select Configuration at the top left-hand corner.
5. Select your AIM from device list below.
6. Select Data Download from top section
7. Select the check box next to the data log you'd like to download and send.
8. Select Data Download Note the Number on the file your download this example is a\_0463 (this will be needed later)
9. Add Racer Name, Number, and Comments.
  - a. These are all optional but helps keep files organized.
  - b. Comments can be used to describe issue and what tune machine has.
10. Once Info is filled out select OK

### File selection option 1

1. Navigate to the AIM install folder, default is C:\AIM\_SPORT\RaceStudio3\user\data
2. Select the date folder for data log you want to send.
3. In the date folder select the Racers Name you entered
4. In the Racers folder select the drk and Aim XRK file type for the data log number that you want to send, in this example it's a\_0463.
5. Copy these with either Ctrl+c or right click and select copy.
6. Connect back to WiFi to send email.
7. Attached both of these to an email to [datalog@evopowersports.com](mailto:datalog@evopowersports.com)

Thank you for choosing Evolution Powersports products. If you require further assistance, please call our Tech Support @ [715-247-3862](tel:715-247-3862)

Note: This product is exempt from the emission standards and related requirements of 40 C.F.R. § 1051 as provided by 40 C.F.R. § 1051.620, and California law [e.g., vehicle code §§ 27156 and 38391]. This product is sold only for use in connection with EPA certified, purpose-built, nonroad vehicles used solely for closed course, nonroad competition/racing and not used for any recreational purpose or on public highways or right of ways maintained by and open to the public. This product is sold only in connection with machines that do not fall under

state and/or federal noise or emission standards/regulations. Purchasers who/that purchase this product represent and warrant that the product is purchased only in connection with EPA -certified, emission-regulations-exempt and noise regulations-exempt competition/racing vehicles as interpreted under applicable state and/or federal law. Questions: Call Evolution Powersports at [715-247-3862](tel:715-247-3862).

REV\_051424

## File selection option 2 “if RaceStudio2 Analysis is installed”


1. Select RaceStudio2
2. Right click on the data log & select open test folder
3. Select the drk and Aim XRK file type for the data log number that you want to send, in this example it's a\_0463.
4. Copy these with either Ctrl+c or right click and select copy.
5. Connect back to WiFi to send email.
6. Attached both of these to an email to [datalog@evopowersports.com](mailto:datalog@evopowersports.com)

Thank you for choosing Evolution Powersports products. If you require further assistance, please call our Tech Support @ [715-247-3862](tel:715-247-3862)

**Note:** This product is exempt from the emission standards and related requirements of 40 C.F.R. § 1051 as provided by 40 C.F.R. § 1051.620, and California law [e.g., vehicle code§§ 27156 and 38391]. This product is sold only for use in connection with EPA certified, purpose-built, nonroad vehicles used solely for closed course, nonroad competition/racing and not used for any recreational purpose or on public highways or right of ways maintained by and open to the public. This product is sold only in connection with machines that do not fall under state and/or federal noise or emission standards/regulations. Purchasers who/that purchase this product represent and warrant that the product is purchased only in connection with EPA -certified, emission-regulations-exempt and noise regulations-exempt competition/racing vehicles as interpreted under applicable state and/or federal law. Questions: Call Evolution Powersports at [715-247-3862](tel:715-247-3862).

REV\_051424

## Documents / Resources

	<p><b><a href="#">EVOLUTION POWER SPOTS Solo 2 DL GPS Lap Timer</a></b> [pdf] Installation Guide Solo 2 DL GPS Lap Timer, Solo 2 DL, GPS Lap Timer, Lap Timer, Timer</p>
---	--

## References

- [User Manual](#)

This website is an independent publication and is neither affiliated with nor endorsed by any of the trademark owners. The "Bluetooth®" word mark and logos are registered trademarks owned by Bluetooth SIG, Inc. The "Wi-Fi®" word mark and logos are registered trademarks owned by the Wi-Fi Alliance. Any use of these marks on this website does not imply any affiliation with or endorsement.