



evolution DIGITAL Steps for Remote Control Pairing and Programming Instructions

[Home](#) » [evolution DIGITAL](#) » evolution DIGITAL Steps for Remote Control Pairing and Programming Instructions 



Contents

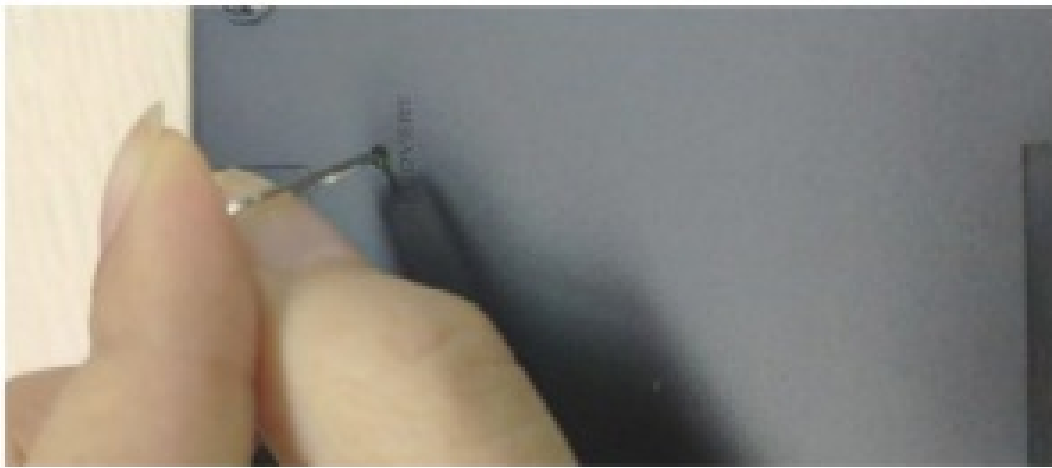
- [1 Remote Control Pairing/Programming](#)
- [2 Trigger/Request RCU pairing](#)
- [3 Pair EVO PRO remote](#)
- [4 Smart Control TV RCU controls](#)
- [5 When Changing MergeTV Standard Box to another TV or Manually updating to current TV.](#)
- [6 Manual Smart RCU update Process](#)
- [7 Documents / Resources](#)
- [8 Related Posts](#)

Remote Control Pairing/Programming

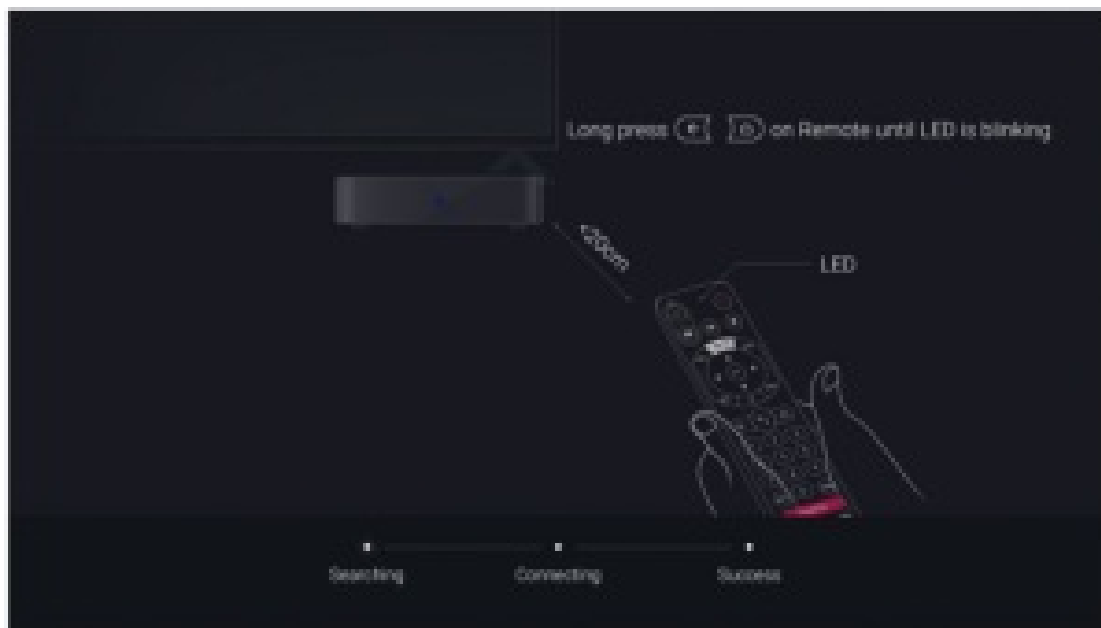
This document outlines the steps for pairing the remote control post-installation in support of existing or replacement remote controls.

Trigger/Request RCU pairing

Using a sharp object or pin, press and hold the 'recovery' button at the bottom of your device.

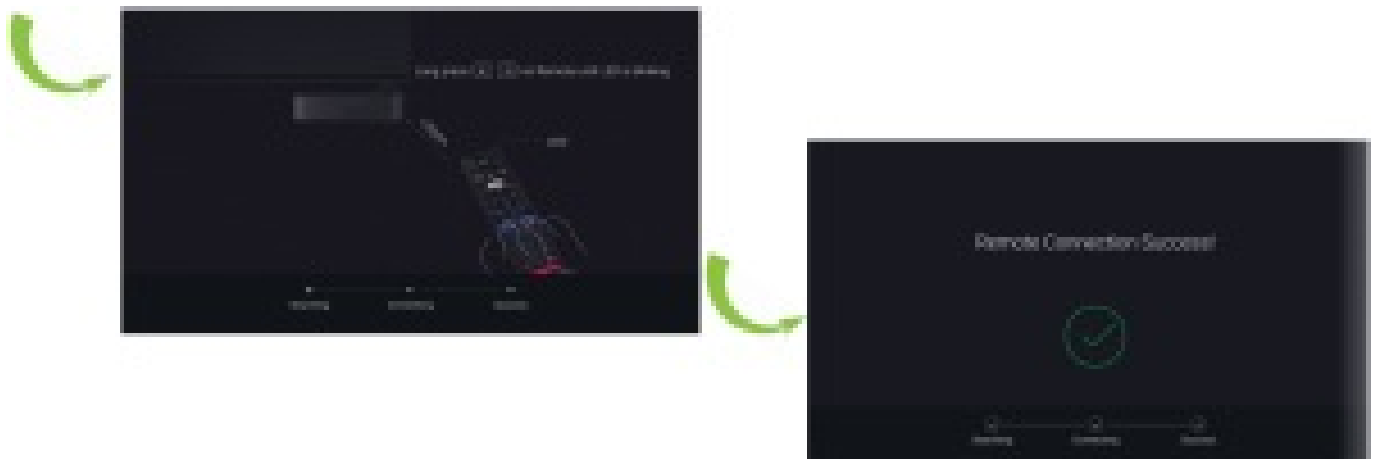


Pair the remote at this point following the instructions on the screen



Pair EVO PRO remote

Long press the **Home** and **Back** buttons at the same time until the red light flashes quickly; then release. That means the RCU has entered the pairing mode. Wait a few seconds without pressing any buttons until you see the popup message of pairing success.



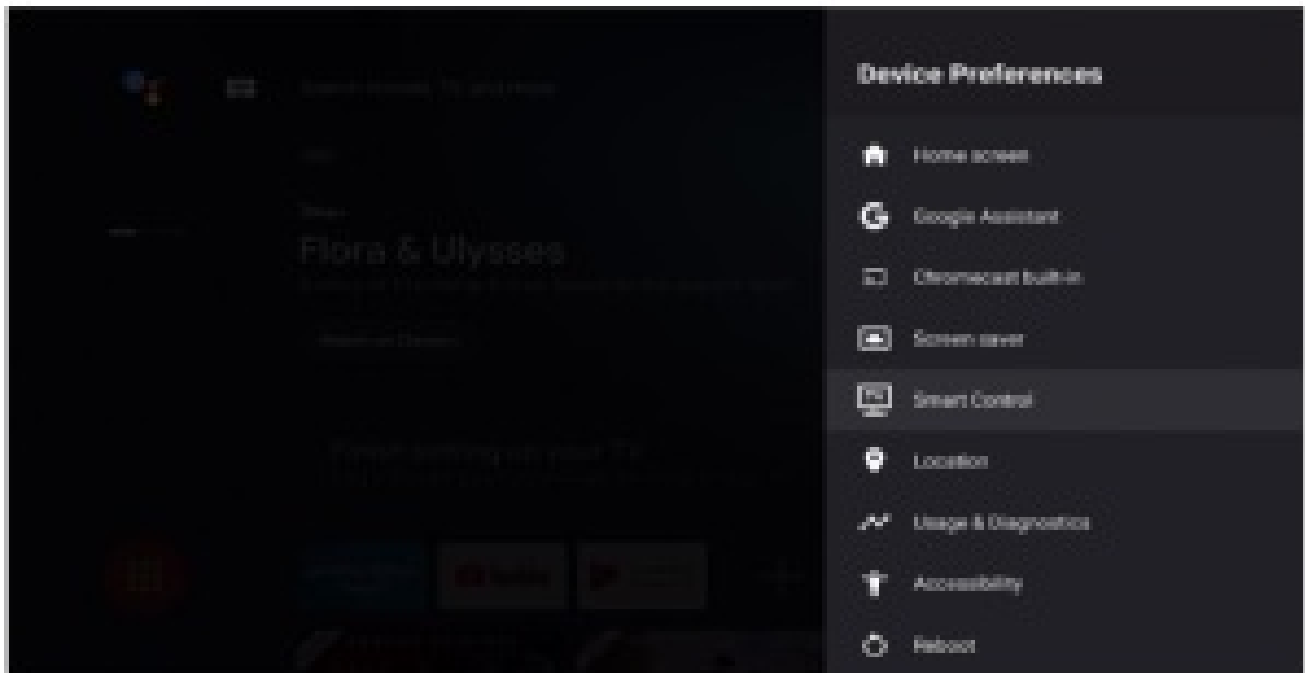
Smart Control TV RCU controls



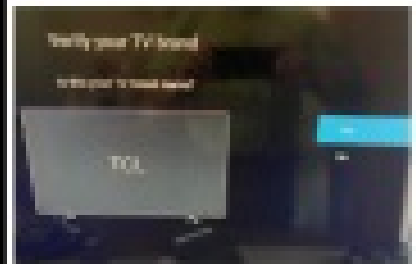
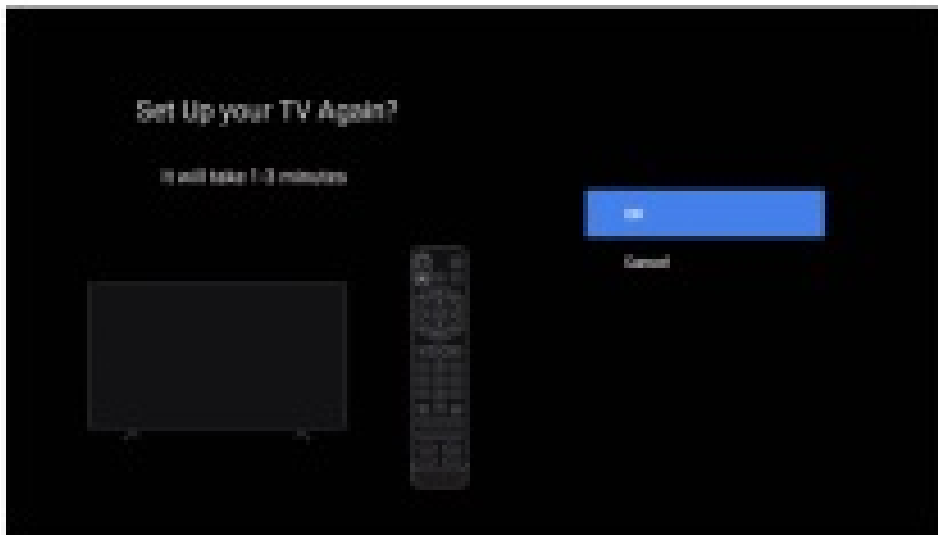
You existing/replacement remote control is now paired, proceed to the next slides for programming the remote to the television.

When Changing MergeTV Standard Box to another TV or Manually updating to current TV.

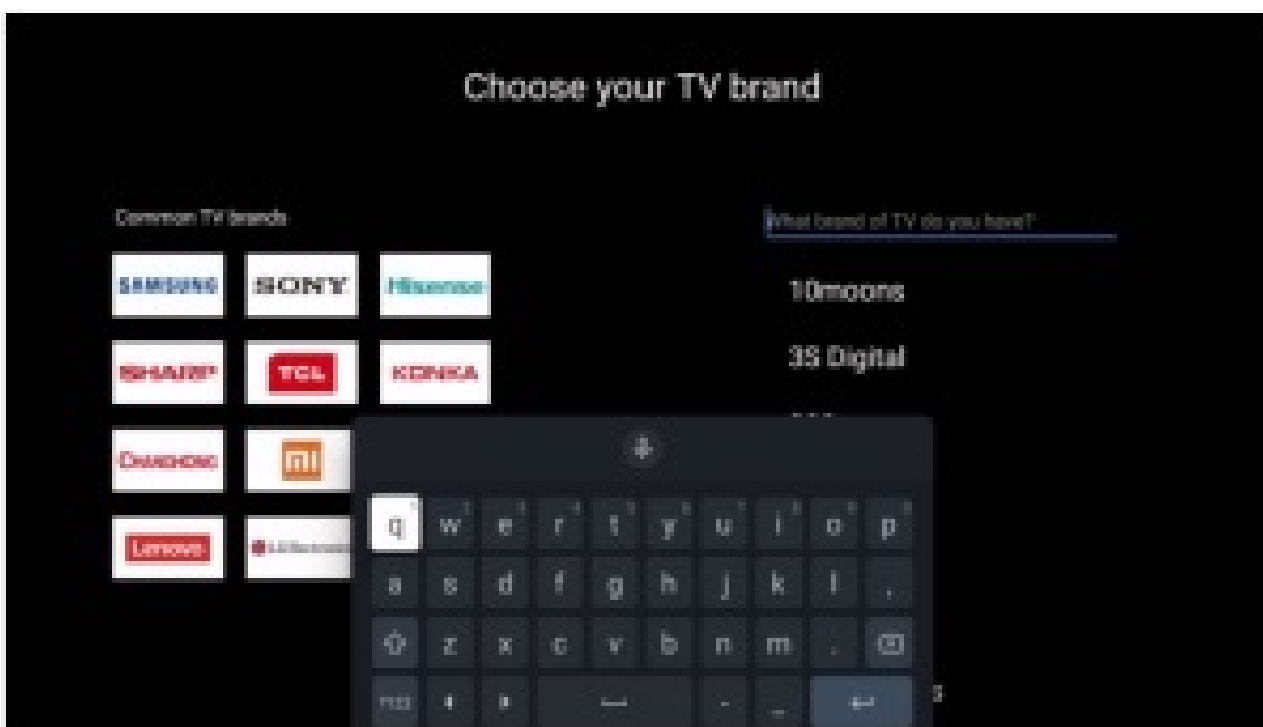
When changing TV you can manually update the RCU program with the following instructions.
Under Device Preferences -> Smart Control you can set up the new TV configuration



Manual Smart RCU update Process



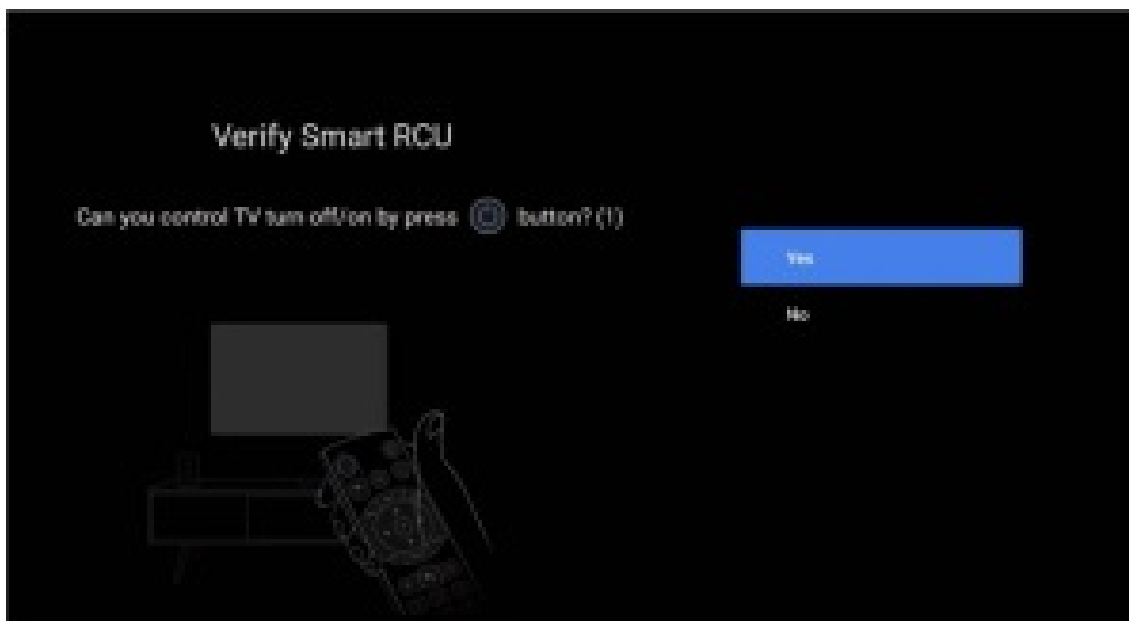
If the device is found it will show in the window as shown Below. Select OK to continue



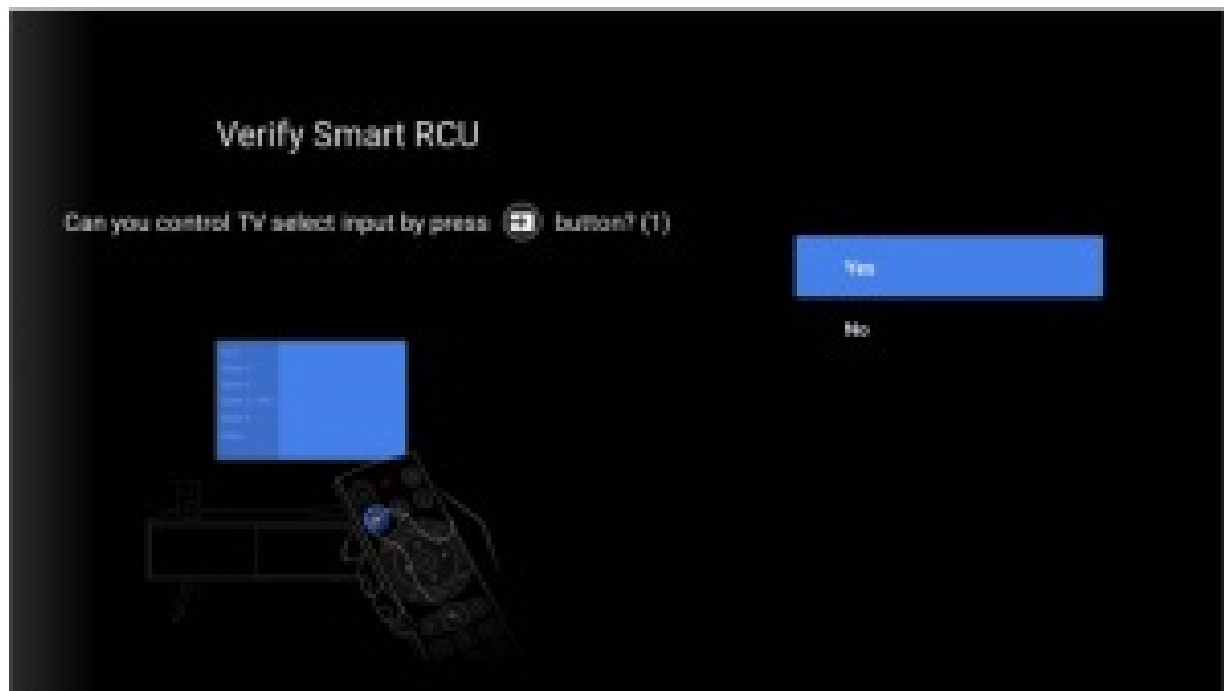
If the TV is not found you can type in the model and continue to the next steps to program your remote.



In this case, the Apex digital TV I was using was found.




Once you have validated the TV Power button press Yes to continue



THANK YOU
Have a great day!

Documents / Resources

	evolution DIGITAL Steps for Remote Control Pairing and Programming [pdf] Instructions Steps for Remote Control Pairing and Programming
---	---