

eviewgps

DS-EC-04

Personal

Mobile Alarm

Device



eviewgps DS-EC-04 Personal Mobile Alarm Device User Guide

[Home](#) » [eviewgps](#) » eviewgps DS-EC-04 Personal Mobile Alarm Device User Guide 

Contents

- [1 eviewgps DS-EC-04 Personal Mobile Alarm Device](#)
- [2 Product Usage Instructions](#)
- [3 Frequently Asked Questions](#)
- [4 Getting to know your device](#)
- [5 Charging Base](#)
- [6 Put the SIM card](#)
- [7 Charging your device](#)
- [8 Switching on and off device](#)
- [9 What do the lights mean](#)
- [10 Activating an SOS Alarm](#)
- [11 Getting a GPS fix](#)
- [12 Making a Phone Call](#)
- [13 Silent mode button](#)
- [14 Specification](#)
- [15 FCC Statement](#)
- [16 Documents / Resources](#)
 - [16.1 References](#)

eviewgps

eviewgps DS-EC-04 Personal Mobile Alarm Device



Product Specifications:

- Charging Method: Charging Base
- Charging Time: Approximately 2-3 hours for full charge
- Battery Level Notification: Low battery warning message below 20%
- Emergency Contact Programming: A minimum of one contact required
- Sound Adjustment: Side buttons (+/-)

Product Usage Instructions

Charging Instructions:

1. Place the device on the charging base.
2. Connect the USB cable from the charging base to the AC adaptor.
3. The charging base light will glow during charging and turn solid when fully charged.
4. For the first use, fully charge the battery for around 2-3 hours.

Call Sequence and Emergency Contact:

- When the battery level falls below 20%, a low battery warning message will be sent to contacts on the list.
- During a call, there will be a 10-second delay between calls. Use this time to press the SOS button to prevent false alarms.
- The receiver of the call can stop the call sequence by pressing "1" on their mobile phone during two-way talking.
- Adjust the sound volume during a call using the side buttons(+/-).
- Remember to program emergency contact numbers; at least one contact must be set.

Important Notes:

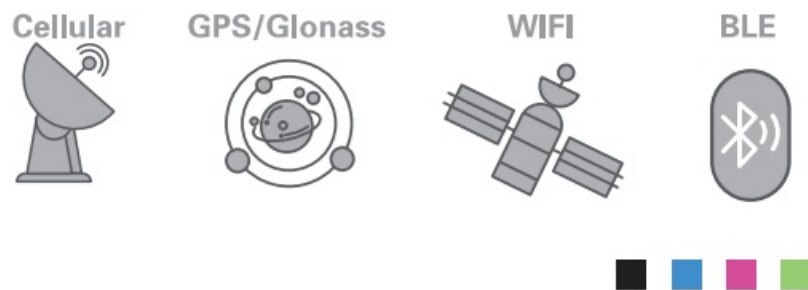
- Short delays may occur as the device calls phones that may be out of range or reach voicemail.

- Be patient during the call sequence.

Frequently Asked Questions

- **Q: What should I do if the device does not charge on the charging base?**
 - A: Make sure the device is properly placed on the charging base and that the USB cable is securely connected to the AC adaptor and charging base.
- **Q: How many emergency contact numbers do I need to program?**
 - A: At least one emergency contact number must be programmed, but it is recommended to set multiple contacts for safety.
- **Q: Can I adjust the sound volume during a call?**
 - A: Yes, you can use the side buttons (+/-) to adjust the sound volume while on a call.

More Info



Getting to know your device

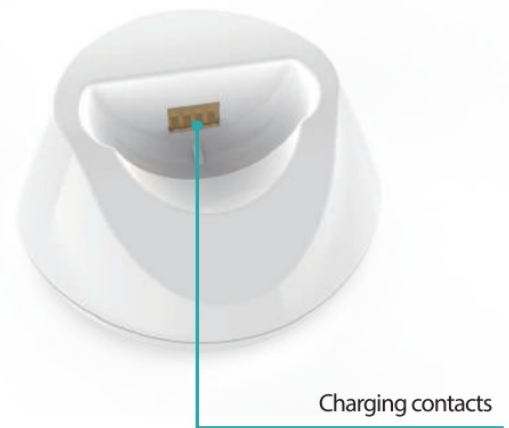


Charging Base

- Back -



- Front -



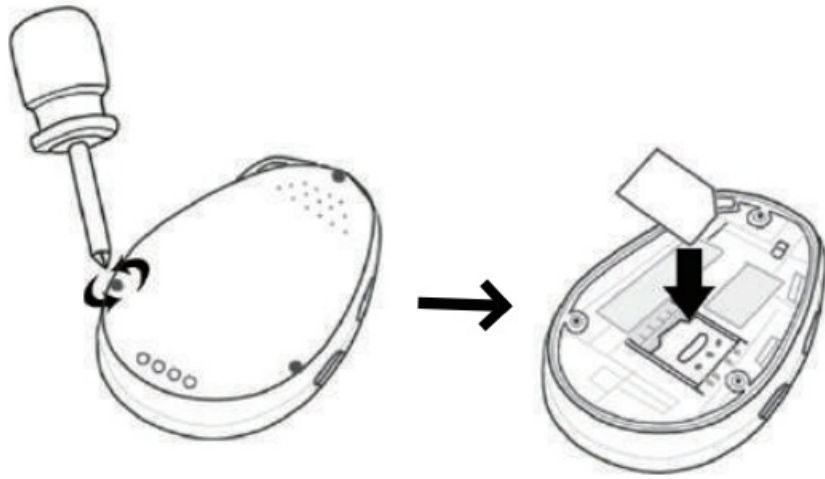
Put the SIM card

-Bottom-

-Bottom-



The SIM card is not included in the package. A Nano SIM card is available from the user's local operator.

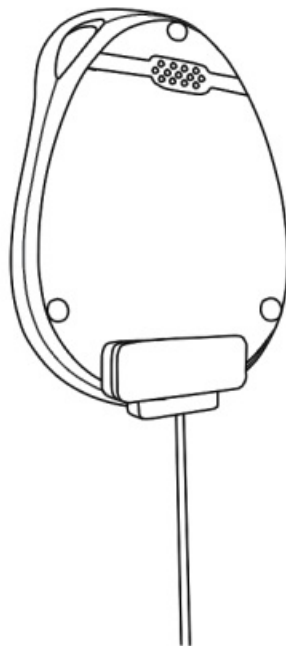


- Unscrew the back cover and remove the cover.
- Insert the SIM card and make sure it's activated with credits.
- Put the cover back and tighten the screws.

Tip: Before installing the SIM card, check if the 11&11 SIM card has a PIN code or not. if yes, please use a cell phone to remove the card's PIN code.

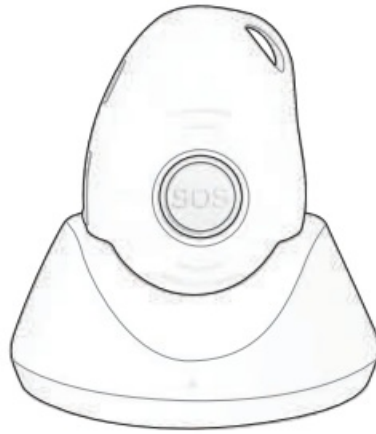
Charging your device

There are two ways to charge your device.



Charging by magnetic USB cable

- When placing the magnetic USB cable on the device charging contacts make sure it is positioned correctly.
- The power indicator (red light) should blink when charging and remain solid when fully charged.



Charging by charging base

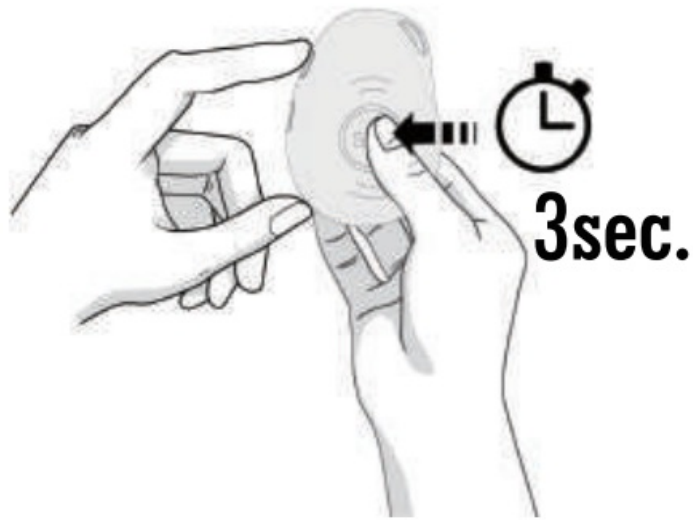
- Place the device on the charging base
- Connect the USB cable from the charging base to the AC adaptor.

The charging base light will glow when charging and turn solid when fully charged. For the first time use, please fully charge the battery for around 2~3 hours. When the battery level falls below 20% it will send a low battery warning message to people on the contact list via text message or APP.

Switching on and off device



- To turn on the device: press the CALL button for 1 second, all the LEDs will flash rapidly. The device can also be turned on automatically by charging via magnetic USB cable or putting it into the docking station.



- To turn off the device: press and hold the side button and SOS button together for 3 seconds until the LEDs turn off.

What do the lights mean

● Cellular signal indicator--Green

Green	Light shows a single flash rapidly every 3 seconds	Light shows a double flash rapidly every 3 seconds
Means	The device has a stable Cellular signal	The device is registered to the Cellular network

● Positioning indicator--Blue

Blue	Light shows a single flash rapidly every 3 seconds	
Means	The device has no latest location fix	

Blue	Light shows a double flash rapidly every 3 seconds	Light Off
Means	The device has latest location fix	The device is not fixing the latest location

● Power indicator--Red

Red	Red ON (solid)	Red shows a double flash rapidly every 3 seconds
State	Device has been fully charged	BLE connected

Red	Red Blinking Quickly	Red Off or blinking slowly
State	Battery power is lower than 20%	The device is charging

Activating an SOS Alarm



When you need help, press the SOS button for 3-4 seconds till you hear a voice prompt to activate an SOS alarm. This starts the sequence of “help me!” text messages sent to your emergency contact numbers followed by outgoing calls.

- If the device fails to connect to the first number, it will call the second number after a delay of 10 seconds. In case the second number fails to be connected as well, the system will connect to the third number etc.
- Between each call, it will have 10 seconds delay, during this time, user can stop call sequence or prevent a possible false alarm by pressing the SOS button. The receiver of the call can also stop call sequence by

pressing 1 on their mobile phone during two-way talking.

- Use the side buttons +/- to adjust the sound volume during a call.

Tip

Please be patient during the call sequence. There can be short delays as the alarm calls phones that maybe out of range or delivered to people's voicemail.

Getting a GPS fix

- To get an initial fix for the GPS features, use outdoors or near a window so the device can get a fix on the satellites. This could take few minutes according to your environment.



Fall down alarm

- Device detects a fall and it will automatically send an alarm to emergency contacts.



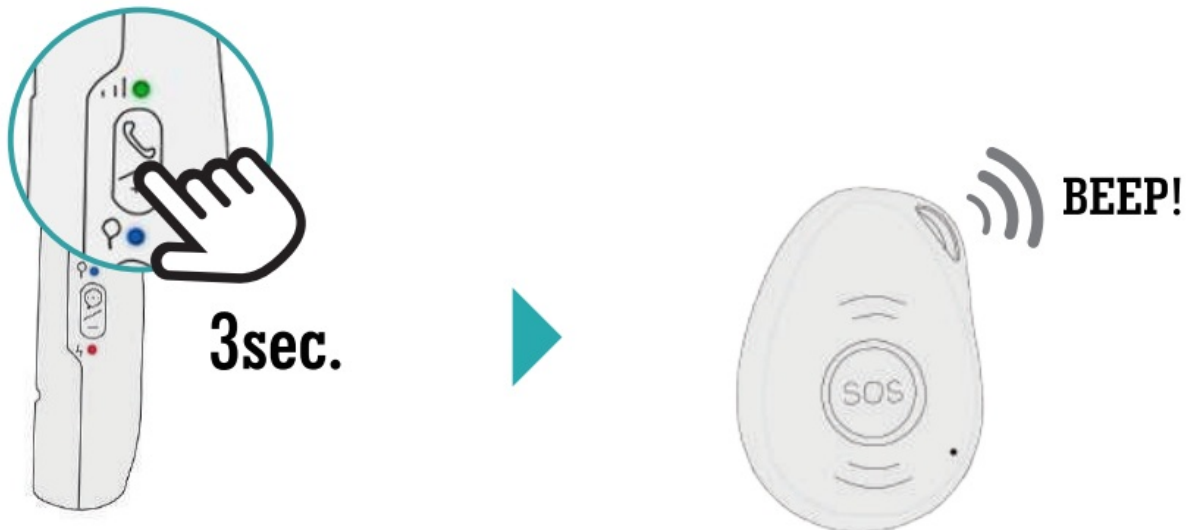
Due to the daily life activities (like some sports, sitting back on a coach, etc), the device may detect a fall incorrectly, this situation may cause a false alarm. However, users can manually cancel the fall alert by pressing the SOS button during its beeping.

Tip

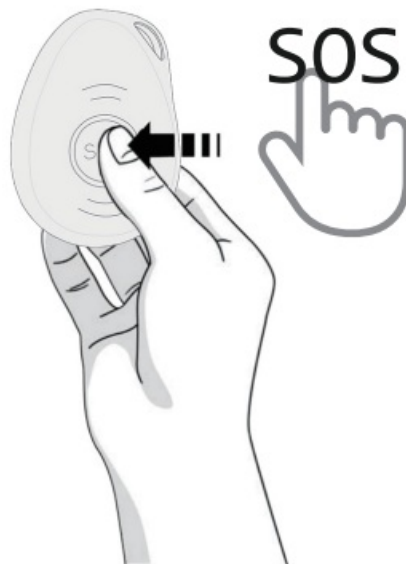
Very Important: Because it still has few chances for the non-detected falling down, we still strongly recommend user to press SOS button when it has an emergency situation.

Making a Phone Call

- To make a call, press side call button for 3 seconds and you will hear a beep, and then it will dial the second number.

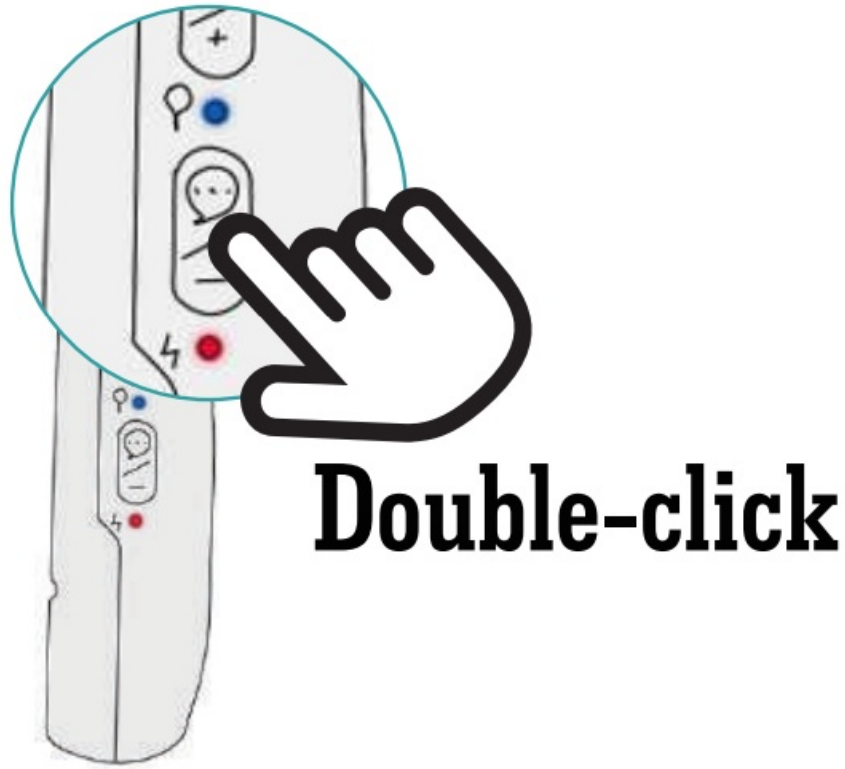


- To end the call, press the SOS button.



Silent mode button

- Double-click this button to turn off voice warnings, and double-click the button again to turn on voice warnings.



Specification

- Dimension: 61mm*44mm*16mm
- Weight: 40g
- Battery: Rechargeable, 3.7V, 800mAh
- Charging voltage: 5V DC
- Waterproof: IP67
- 4 locating technologies: GPS, BLE, WIFI, LBS

Cautions:

Please comply with the instructions to extend the unit life:

- Don't use & store the unit in dusty places.
- Don't put the unit in overheated or over-cooled places.
- Clean the unit with a piece of dry cloth. Don't clean with chemicals or detergent.
- Don't disassemble or refit the unit.
- Using other batteries will cause unwanted situations.

www.eviewgps.com

FCC Statement

FCC Warning

15.19 Labeling requirements.

This device complies with part 15 of the FCC Rules. Operation is subject to the following two conditions: (1) This device may not cause harmful interference, and (2) this device must accept any interference received, including interference that may cause undesired operation.

15.21 Information to user.

Any Changes or modifications not expressly approved by the party responsible for compliance could void the user's authority to operate the equipment.

15.105 Information to the user.

Note: This equipment has been tested and found to comply with the limits for a Class B digital device, pursuant to part 15 of the FCC Rules. These limits are designed to provide reasonable protection against harmful interference in a residential installation. This equipment generates uses and can radiate radio frequency energy and, if not installed and used in accordance with the instructions, may cause harmful interference to radio communications. However, there is no guarantee that interference will not occur in a particular installation. If this equipment does cause harmful interference to radio or television reception, which can be determined by turning the equipment off and on, the user is encouraged to try to correct the interference by one or more of the following measures:


- Reorient or relocate the receiving antenna.
- Increase the separation between the equipment and the receiver.
- Connect the equipment to an outlet on a circuit different from that to which the receiver is connected.
- Consult the dealer or an experienced radio/TV technician for help.

FCC RF Radiation Exposure Statement:

1. This Transmitter must not be co-located or operating in conjunction with any other antenna or transmitter.
2. This equipment complies with RF radiation exposure limits set forth for an uncontrolled environment.

This equipment should be installed and operated with a minimum distance 20cm between the radiator and your body.

Documents / Resources

	evuewgps DS-EC-04 Personal Mobile Alarm Device [pdf] User Guide DS-EC-04 Personal Mobile Alarm Device, DS-EC-04, Personal Mobile Alarm Device, Mobile Alarm Device, Alarm Device, Device
---	---

References

- [User Manual](#)

[Manuals+](#), [Privacy Policy](#)

This website is an independent publication and is neither affiliated with nor endorsed by any of the trademark owners. The "Bluetooth®" word mark and logos are registered trademarks owned by Bluetooth SIG, Inc. The "Wi-Fi®" word mark and logos are registered trademarks owned by the Wi-Fi Alliance. Any use of these marks on this website does not imply any affiliation with or endorsement.