



Everstart Maxx BC40BE AUTOMATIC BATTERY CHARGER User Manual

[Home](#) » [Everstart Maxx](#) » Everstart Maxx BC40BE AUTOMATIC BATTERY CHARGER User Manual 

Contents

- 1 Everstart Maxx BC40BE AUTOMATIC BATTERY CHARGER
- 2 FEATURES
- 3 SAFETY GUIDELINES / DEFINITIONS
- 4 IMPORTANT SAFETY INSTRUCTIONS
- 5 SPECIFIC SAFETY INSTRUCTIONS FOR BATTERY CHARGERS
 - 5.1 FIRST AID
- 6 PREPARING TO CHARGE
- 7 OPERATING INSTRUCTIONS
- 8 TROUBLESHOOTING
- 9 CARE AND MAINTENANCE
- 10 ACCESSORIES
- 11 SERVICE INFORMATION
- 12 TWO-YEAR LIMITED WARRANTY
- 13 FCC STATEMENT
- 14 SPECIFICATIONS
- 15 Contact
- 16 Everstart Maxx BC40BE AUTOMATIC BATTERY CHARGER User Manual
- 17 Related Posts



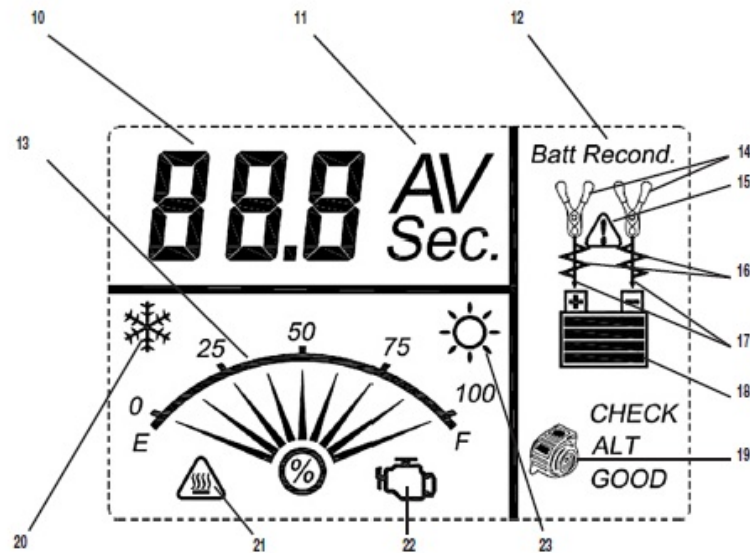
Everstart Maxx BC40BE AUTOMATIC BATTERY CHARGER



FEATURES



LCD DISPLAY DETAIL



1. LCD Screen
2. Charge / Voltage Button
3. Engine Start Button
4. Alternator Check Button
5. Battery Recondition Button
6. Negative (Black) Clamp
7. Positive (Red) Clamp
8. 120V AC Cord Storage Tabs
9. 120V AC Plug
10. Digital Display (varies by function)
11. Amperes / Voltage / Seconds Indicator
12. Battery Recondition Indicator
13. Battery Charge Gauge
14. Clamp Icons
15. Fault Icon
16. Battery Reconditioning Icons
17. Arrow Icons
18. Battery Icon
19. Alternator Icon
20. Low Surrounding Temperature Icon
21. Overheat Alarm Icon
22. Engine Start Icon
23. High Surrounding Temperature Icon

SAFETY GUIDELINES / DEFINITIONS

DANGER: Indicates an imminently hazardous situation which, if not avoided, will result in death or serious injury.

WARNING: Indicates a potentially hazardous situation which, if not avoided, could result in death or serious injury.

CAUTION: Indicates a potentially hazardous situation which, if not avoided, may result in minor or moderate injury and/or property damage.

RISK OF UNSAFE OPERATION: When using tools or equipment, basic safety precautions should always be followed to reduce the risk of personal injury. Improper operation, maintenance or modification of tools or equipment could result in serious injury and property damage. There are certain applications for which tools and equipment are designed. Manufacturer strongly recommends that this product NOT be modified and/or used for any application other than for which it was designed. Read and understand all warnings and operating instructions before using any tool or equipment.

READ ALL INSTRUCTIONS

WARNING: Read all instructions before operating the battery charger. Failure to follow all instructions listed below may result in electric shock, fire and/or serious injury.

IMPORTANT SAFETY INSTRUCTIONS

GENERAL SAFETY WARNINGS AND INSTRUCTIONS

- The unit was designed for household use only.
- **WARNING:** TO REDUCE THE RISK OF FIRE, ELECTRIC SHOCK, BURST HAZARD, OR INJURY TO PERSONS OR PROPERTY:
 - Avoid dangerous environments. Don't use the battery charger in damp or wet locations. Do not expose the battery charger to rain or snow.
 - Keep children away. Keep away from children. This is not a toy!
 - Store indoors. When not in use, battery chargers should be stored indoors in dry, and high or locked-up places – out of reach of children.
 - Unplug the battery charger when not in use.
 - Check for damaged parts. Any part that is damaged should be properly repaired or replaced by manufacturer unless otherwise indicated elsewhere in this instruction manual before further use.

SPECIFIC SAFETY INSTRUCTIONS FOR POWER CORDS

- Don't abuse cord. Never carry appliance by cord or yank it to disconnect from receptacle. Keep cord from heat, oil, and sharp edges. Pull by plug rather than cord when unplugging the unit.
- Ground fault circuit interrupter (GFCI) protection should be provided on the circuits or outlets to be used. Receptacles are available having built in GFCI protection and may be used for this measure of safety.

DANGER: Never alter AC cord or plug provided. If it will not fit the outlet, have a proper outlet installed by a qualified electrician. Improper connection can result in a risk of an electric shock.

Extension Cords

An extension cord should not be used unless absolutely necessary. Use of an improper extension cord could result in a risk of fire and electric shock, and will void warranty.

- If an extension cord must be used, make sure your extension cord is in good condition. When using an extension cord, be sure to use one heavy enough to carry the current your product will draw. An undersized

cord will cause a drop in line voltage resulting in loss of power and overheating. The following table shows the correct size to use depending on cord length and nameplate ampere rating. If in doubt, use the next heavier gauge. The smaller the gauge number, the heavier the cord.

Recommended Minimum AWG Size for Extension Cords for Battery Chargers					
AC Input Rating Amperes		American Wire Gage (AWG) Size of Cord Length of Cord, feet (m)			
Equal to or greater than	But less than	25 (7.6)	50 (15.2)	100 (30.5)	150 (45.6)
0	2	18	18	18	16
2	3	18	18	16	14
3	4	18	18	16	14
4	5	18	18	14	12
5	6	18	16	14	12
6	8	18	16	12	10
8	10	18	14	12	10
10	12	16	14	10	8
12	14	16	12	10	8
14	16	16	12	10	8
16	18	14	12	8	8
18	20	14	12	8	6

Power Cord Safety

The unit has a polarized plug (one blade is wider than the other) as a safety feature. This plug will fit into a polarized outlet only one way. If the plug does not fit fully into the outlet, reverse the plug. If it still does not fit, contact a qualified electrician. Do not attempt to defeat this safety feature.

SPECIFIC SAFETY INSTRUCTIONS FOR BATTERY CHARGERS

WARNING: BURST HAZARD: Do not use the unit for charging dry-cell batteries that are commonly used with home appliances. These batteries may burst and cause injury to persons and damage property. Use the unit for charging/boosting a 12 volt battery only. It is not intended to supply power to a low-voltage electrical system other than in a starter-motor application.

- Use of accessories and attachments: the use of any accessory or attachment not recommended by the manufacturer for use with this battery charger could be hazardous.
- Stay alert. Use common sense. Do not operate this equipment when you are tired or impaired.
- Do not operate the battery charger near flammable liquids or in gaseous or explosive atmospheres. Motors may spark, and the sparks might ignite fumes.
- Do not operate the battery charger if it has received a sharp blow, been dropped, or has been otherwise damaged in any way. Return it to the manufacturer for repair.

WARNING: TO REDUCE THE RISK OF ELECTRIC SHOCK:

- Never immerse the battery charger in water or any other liquid, or use when wet.

WARNING: RISK OF EXPLOSIVE GASES

- WORKING IN THE VICINITY OF A LEAD ACID BATTERY IS DANGEROUS. BATTERIES GENERATE EXPLOSIVE GASES DURING NORMAL BATTERY OPERATION. FOR THIS REASON, IT IS OF THE

UTMOST IMPORTANCE THAT EACH TIME BEFORE USING THE BATTERY CHARGER YOU READ THIS MANUAL AND FOLLOW INSTRUCTIONS EXACTLY.

- To reduce the risk of battery explosion, follow these instructions and those published by the battery manufacturer and manufacturer of any equipment you intend to use in the vicinity of the battery. Review cautionary markings on these products and on the engine.
- This equipment employs parts (switches, relays, etc.) that produce arcs or sparks.
- Therefore, if used in a garage or enclosed area, the unit MUST be placed not less than 18 inches above the floor.
- THIS UNIT IS NOT FOR USE BY CHILDREN AND SHOULD ONLY BE OPERATED BY ADULTS.

WARNING: TO REDUCE THE RISK OF FIRE:

- Do not operate near flammable materials, fumes or gases.
- Do not expose to extreme heat or flames.

CAUTION: TO REDUCE THE RISK OF INJURY OR PROPERTY DAMAGE:

- NEVER ATTEMPT TO CHARGE A FROZEN BATTERY.
- Do not charge the battery while the engine is operating.
- Stay clear of fan blades, belts, pulleys, and other parts that can cause injury to persons.
- Vehicles that have on-board computerized systems may be damaged if vehicle battery is jump-started. Before jump-starting, read the vehicle's owner's manual to confirm that external-starting assistance is suitable.
- When working with lead acid batteries, always make sure someone is close enough to provide immediate assistance in case of accident or emergency.
- Always have protective eyewear when using this product: contact with battery acid may cause blindness and/or severe burns. Be aware of first aid procedures in case of accidental contact with battery acid.
- Have plenty of fresh water and soap nearby in case battery acid contacts skin.
- If battery acid contacts skin or clothing, wash immediately with soap and water for at least 10 minutes and get medical attention immediately.
- Never smoke or allow a spark or flame in vicinity of vehicle battery, engine or battery charger.
- Remove personal metal items such as rings, bracelets, necklaces and watches when working with a lead acid battery. A lead acid battery can produce a short circuit current high enough to weld a ring, or similar metal object, to skin causing a severe burn.
- Be extra cautious to avoid dropping a metal tool onto the battery. It might spark or short-circuit the battery or another electrical part, and that may cause an explosion.
- Never allow battery acid to come in contact with this unit.
- Do not operate this unit in a closed area or restrict ventilation in any way.
- Always turn the battery charger off by unplugging it when not in use.
- Do not open the BATTERY CHARGER — there are no user-serviceable parts inside.
- Opening the battery charger will void the manufacturer's warranty.
- Operate battery charger only as described in this Instruction Manual.
- Check battery charger and components periodically for wear and tear. Return to manufacturer for replacement of worn or defective parts immediately.

FIRST AID

- **Skin:** If battery acid comes in contact with skin, rinse immediately with water, then wash thoroughly with soap and water. If redness, pain, or irritation occurs, seek immediate medical attention.
- **Eyes:** If battery acid comes in contact with eyes, flush eyes immediately, for a minimum of 15 minutes and seek immediate medical attention.
- **LCD liquid crystal display:** If liquid crystal comes in contact with your skin: Wash area off completely with plenty of water. Remove contaminated clothing. If liquid crystal gets into your eye: Flush the affected eye with clean water and then seek medical attention. If liquid crystal is swallowed: Flush your mouth thoroughly with water. Drink large quantities of water and induce vomiting. Then seek medical attention.

WARNING: TO REDUCE THE RISK OF INJURY

Follow these instructions and those published by the battery manufacturer and manufacturer of any equipment you intend to use with this unit. Review cautionary markings on this product and on engine.

SAVE THESE INSTRUCTIONS

PREPARING TO CHARGE

1. Be sure area around battery is well ventilated while battery is being charged.
2. Remove battery completely from boat/airplane or any confined area before charging.
3. If it is necessary to remove battery from vehicle to charge, or to clean terminals, always remove grounded terminal from battery first. Make sure all accessories in the vehicle are off, so as not to cause an arc.
4. Clean battery terminals, taking care to avoid getting corrosive material in eyes.
5. Add distilled water in each cell until battery acid reaches level specified by battery manufacturer. This helps purge excessive gas from cells. Do not overfill. For a battery without cell caps (maintenance free), carefully follow manufacturer's charging instructions.
6. Study all battery manufacturer's specific precautions, such as removing or not removing cell caps while charging, and recommended rates of charge.
7. Determine voltage of battery to be charged by referring to the vehicle manual. The unit is for charging a 12 volt battery only.

Charger Location

- Locate charger as far away from battery as cables permit.
- Never place charger directly above battery being charged; gases from battery will corrode and damage charger.
- Never allow battery acid to drip on charger when reading gravity or filling battery.
- Never operate charger in a closed-in area or restrict ventilation in any way.
- A marine (boat) battery must be removed and charged on shore. To charge it on board requires equipment specifically designed for marine use. This unit is NOT designed for such use.
- Do not set a battery on top of the charger.

Connection Precautions

- Never allow clamps to touch each other.
- Attach clamps to battery and chassis as indicated in “Battery Installed in Vehicle” steps 5 and 6, or in “Battery Outside of Vehicle” steps 2 to 5.

CHARGING A BATTERY INSTALLED IN A VEHICLE

WARNING: A spark near the battery may cause an explosion. To reduce risk of a spark near the battery:

1. Position AC and clamp cords to reduce risk of damage by hood, door, or moving engine part.
2. Stay clear of fan blades, belts, pulleys, and other parts that can cause injury to persons.
3. Check polarity of battery posts. POSITIVE (POS, P, +) battery post usually has larger diameter than NEGATIVE (NEG, N, -) post.
4. Determine which post of battery is grounded (connected) to the chassis. If negative post is grounded to chassis (as in most vehicles), see 5. If positive post is grounded to the chassis, see 6.
5. For negative-grounded vehicle, connect POSITIVE (RED) clamp from battery charger to POSITIVE (POS, P, +) ungrounded post of battery. Connect NEGATIVE (BLACK) clamp to vehicle chassis or engine block away from battery. Do not connect clip to carburetor, fuel lines, or sheet-metal body parts. Connect to heavy gauge metal part of the frame or engine block.
6. For positive-grounded vehicle, connect NEGATIVE (BLACK) clamp from battery charger to NEGATIVE (NEG, N, -) ungrounded post of battery. Connect POSITIVE (RED) clamp to vehicle chassis or engine block away from battery. Do not connect clip to carburetor, fuel lines or sheet-metal body parts. Connect to a heavy gauge metal part of the frame or engine block.
7. When disconnecting charger, disconnect AC cord, remove clamp from vehicle chassis, and then remove clamp from battery terminal.
8. Do not charge the battery while the engine is operating.
9. See operating instructions for length of charge information.

CHARGING A BATTERY THAT HAS BEEN REMOVED FROM A VEHICLE

WARNING: A spark near the battery may cause an explosion. To reduce risk of a spark near the battery:

1. Check polarity of battery posts. The Positive post (marked POS, P, +) usually has a larger diameter than the Negative battery post (marked NEG, N, -).
2. Attach a 24-inch (minimum length) AWG #6 insulated battery cable to the Negative battery post (marked NEG, N, -).
3. Connect the Positive (RED) battery clamp to the Positive battery post (marked POS, P, + or red).
4. Stand as far back from the battery as possible, and do not face battery when making final connection.
5. Carefully connect the NEGATIVE (BLACK) charger clamp to the free end of the battery cable connected to the negative terminal.
6. When disconnecting charger, always do so in reverse sequence of connecting procedure and break first connection while as far away from battery as practical.

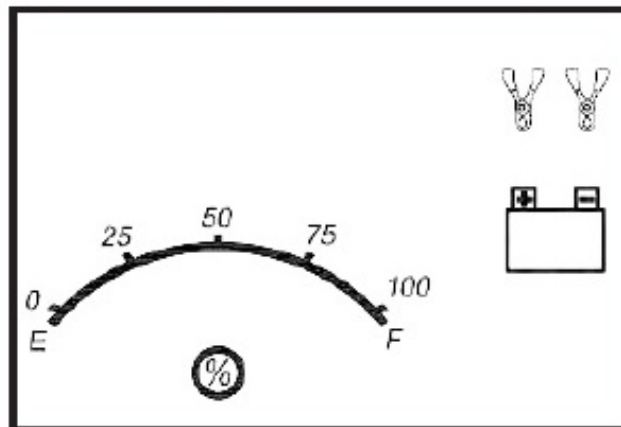
OPERATING INSTRUCTIONS

CHARGING THE BATTERY

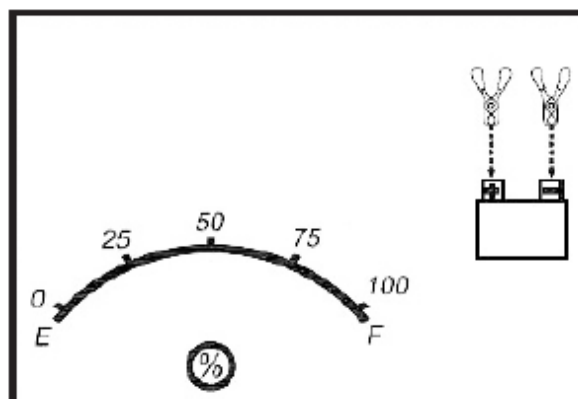
WARNING: TO REDUCE THE RISK OF INJURY OR PROPERTY DAMAGE:

- Always disconnect the AC plug from the AC outlet first before disconnecting the charger from the battery to be charged.
- Ensure that all installation, operating instructions and safety precautions are understood and observed; then follow the steps outlined in the appropriate section (“Charging a battery Installed in a Vehicle” or “Charging a Battery That has been Removed from a Vehicle”).

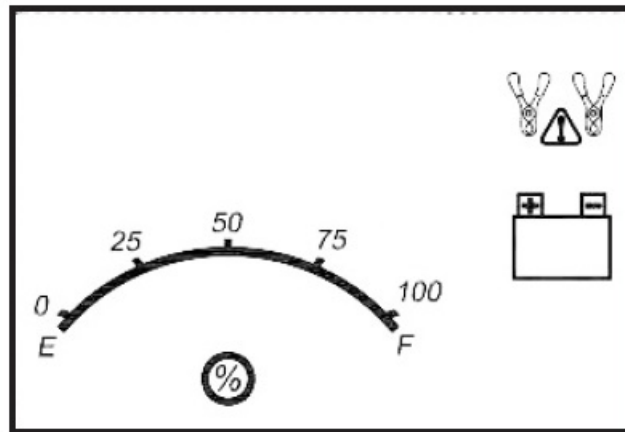
1. Plug the battery charger’s power cord into an AC outlet. The charger is now in Standby Mode. The LCD screen will display the following (the clamp icon will flash, the empty battery icon and the gauge without the pointer will light):



2. The charger’s battery clamps are color-coded. Red is positive; black is negative. Connect the battery clamps correctly to the corresponding connectors on the battery posts following the steps outlined in the “IMPORTANT SAFETY INSTRUCTION” section at the front of this manual.
 - **IMPORTANT:** If the clamps are correctly connected with regard to polarity and the unit is properly connected to the AC outlet, the unit will be in Standby mode and the LCD screen will display the following (the clamp icons, arrow icons, the battery icon and the gauge without the pointer light solid):

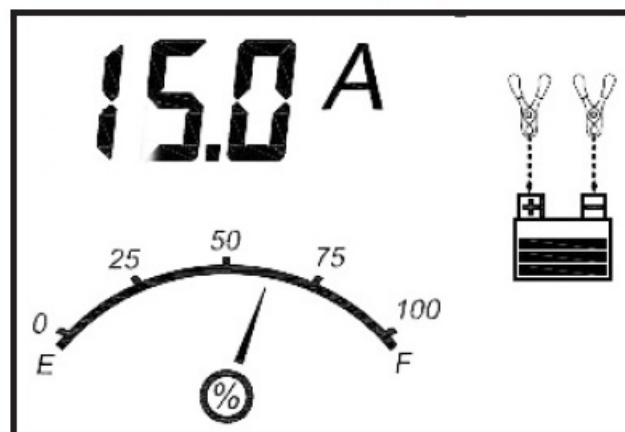


- If the clamps are INCORRECTLY connected with regard to polarity, the LCD screen will display the following (the “+” and “-” inside the battery icon and the fault icon will flash and the clamp icons, the battery icon and the gauge without the pointer will light) and a warning will sound until the clamps are disconnected:

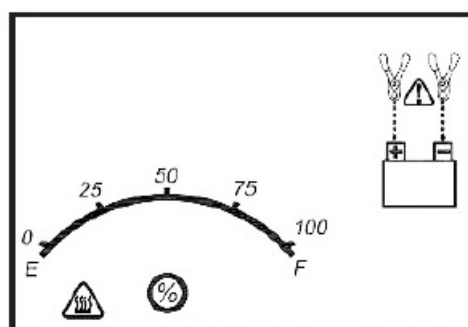


- Unplug the charger; then remove the clamps. Reconnect the clamps properly.

3. When the unit is properly connected, press the charge/voltage button to start the charging process. The LCD screen will display the following:

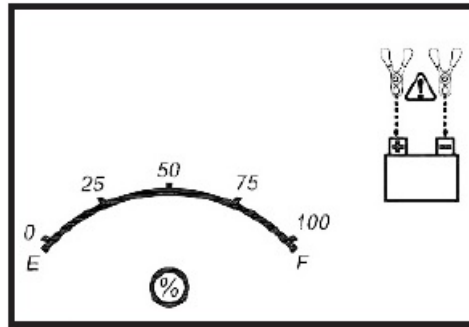


- The digital display shows the output current that is charging the battery. The gauge indicates the charge status of the battery. The clamp icons and the battery icon light solid, the bars on the battery icon will change from empty to solid (bottom to top) repeatedly and the arrow icons will gradually and repeatedly move downward to the battery icon.
- **Notes:** The “❄️” icon will appear at the top right of the gauge section if the surrounding ambient temperature is higher than approximate 40°C. The “ ” icon will appear at the top left of the gauge section if the surrounding ambient temperature is lower than 0°C. This is not a fault code, but indicates that the unit’s temperature compensation feature is operating.
- **IMPORTANT:** If the unit is overheated, the LCD screen will display the following (the overheat alarm icon, fault icon and the battery icon will flash; and the clamp icons, arrow icons and the gauge without the pointer will light):

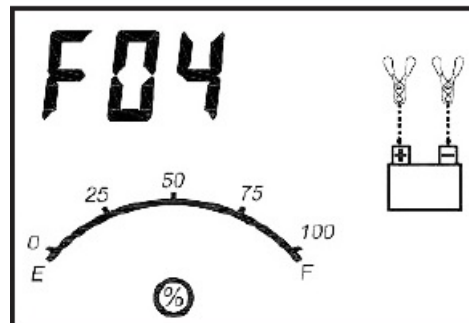


- Disconnect the charger and allow the charger to cool for several minutes. Make sure there is adequate ventilation around the unit before attempting to charge again.
- **IMPORTANT:** The charger will automatically detect the battery condition. If it detects a problem with the battery, the LCD screen will display the fault indication icon (the fault icon and the battery icon will flash;

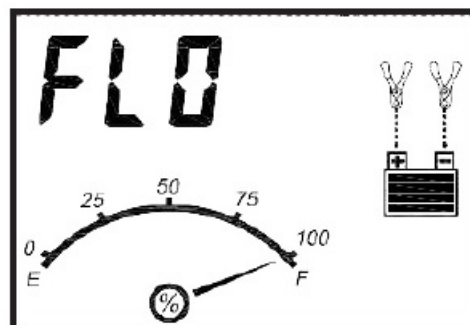
and the clamp icons, arrow icons and the gauge without the pointer will light):



- Disconnect the charger. Have the battery checked by a qualified technician.
- **IMPORTANT:** If the battery is not fully charged (the battery charge gauge does not reach 100%) after 18 hours of continuous charging, the battery may have internal damage and will not accept a charge. After 18 hours, the charging process will automatically cut-off, the LCD screen will display the following (the digital readout shows “F04”, the clamp icons, arrow icons, battery icon and the gauge without the pointer will light solid):



- Disconnect the charger. Have the battery checked by a qualified technician.
4. When the battery is completely charged, the unit automatically goes into float charge mode and the LCD screen displays the following:



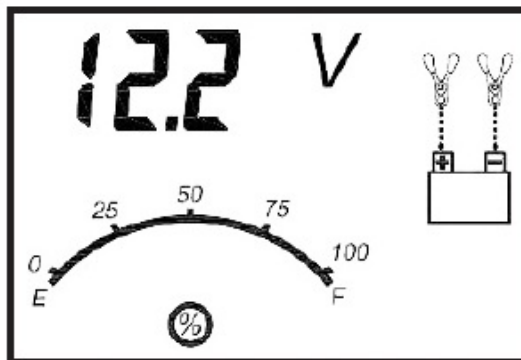
5. The digital display shows “FLO” to indicate that the unit is in float charge mode. The battery charge gauge points to 100%, indicating a full charge. The clamp icon and battery icon with four bars light solid, and the arrow icons will gradually and repeatedly move downward to the battery icon. In this mode, the unit monitors the battery voltage and charges as necessary to assure the battery maintains full capacity. The unit remains in float charge mode as long as the charger is connected to the battery and plugged into a functioning AC outlet.

To stop the charging process at any time, press and hold the charge/voltage button for three seconds to return the unit to Standby Mode. When disconnecting the charger, disconnect the AC cord, remove clamp from the vehicle chassis, and then remove the clamp from the battery terminal.

CHECKING THE BATTERY VOLTAGE

To Check the Battery Voltage in Standby Mode

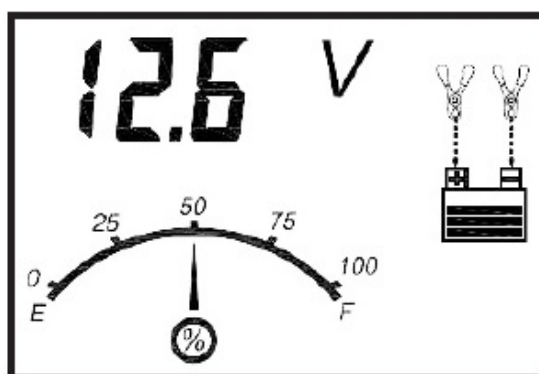
1. Set up the battery charger and connect to the battery following steps 1 through 2 in the “Charging the Battery” section.
2. Press the charge/voltage button. The LCD screen will display the following:



- The digital display shows the current voltage of the connected battery for 5 seconds. The gauge without the pointer will light solid. The unit will automatically return to standby mode after 5 seconds.

To Check the Battery Voltage in Charging Mode

Press the charge/voltage button and the LCD screen will display the following:



The digital display shows the current voltage of the connected battery for 5 seconds. Pressing the alternator check button or the battery recondition button will have no effect. The unit will automatically return to charging mode after 5 seconds. When disconnecting the charger, disconnect the AC cord, remove clamp from the vehicle chassis, and then remove the clamp from the battery terminal.

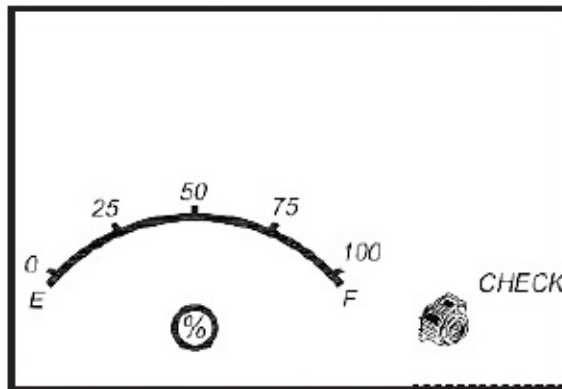
USING THE ALTERNATOR CHECK FUNCTION

Set up the battery charger and connect to the battery following steps 1 through 2 in the “Charging the Battery” section.

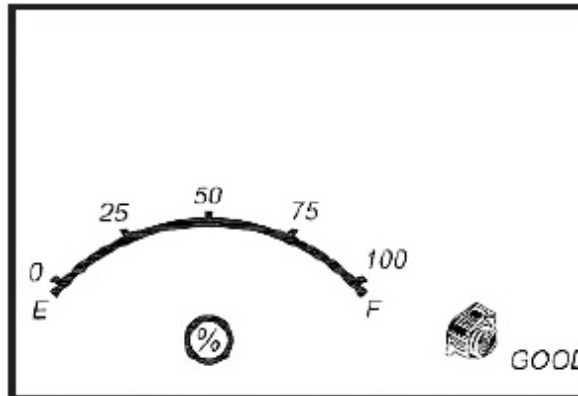
Part 1

No Load (turn OFF all vehicle’s accessories): The battery must be fully charged before testing the alternator. Run the engine long enough to achieve normal idle speed and verify there is a no-load voltage.

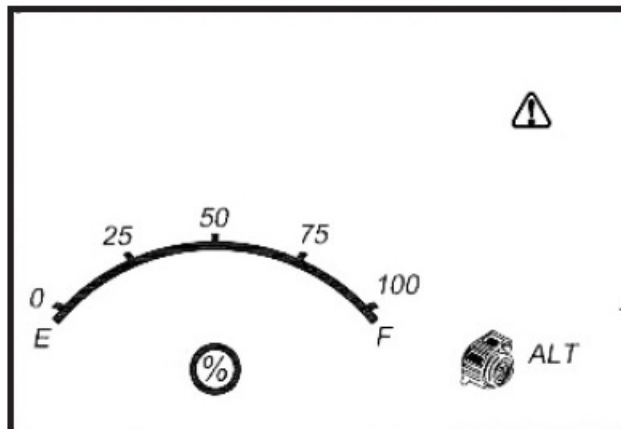
1. Press the alternator check button to start the check. The LCD screen will display the following to indicate the unit is analyzing the alternator:



- “Check” will flash, and the alternator icon and the gauge without the pointer will light solid.
2. If the unit detects that the alternator is good, the LCD screen will display the following:



- “Good”, the alternator icon and the gauge without the pointer will light solid.
3. If the unit detects that the alternator is out of typical voltage range, the LCD screen will display the following:

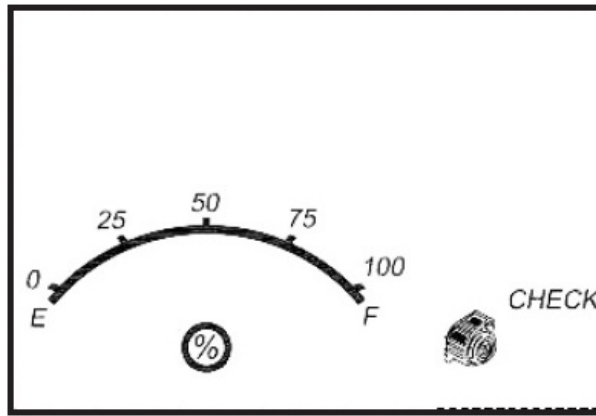


- The fault icon will flash; and the alternator icon, “ALT” and the gauge without the pointer will light solid.
4. Press the alternator check button again to stop the test.

Part 2

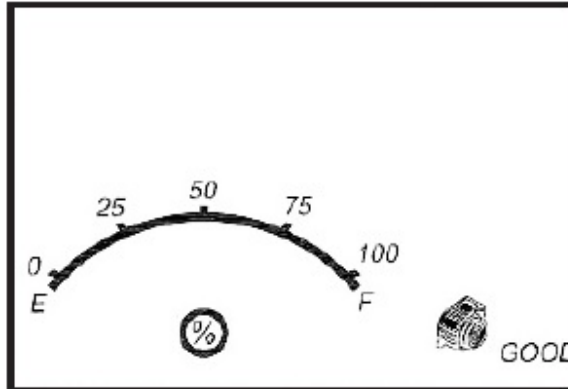
Under Load (accessories ON): Next, load the alternator by turning on as many accessories as possible (except for A/C and Defrost).

1. Press the alternator check button to start the check. The LCD screen will display the following to indicate the unit is analyzing the alternator:



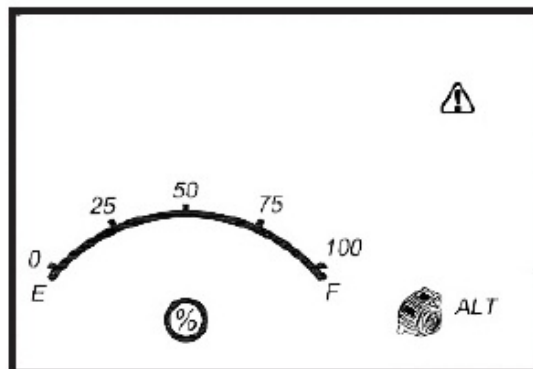
- “Check” will flash, and the alternator icon and the gauge without the pointer will light solid.

2. If the unit detects that the alternator is good, the LCD screen will display the following:



- “Good”, the alternator icon and the gauge without the pointer will light solid.

3. If the unit detects that the alternator is out of typical voltage range, the LCD screen will display the following:



- The fault icon will flash; and the alternator icon, “ALT” and the gauge without the pointer will light solid.

4. Press the alternator check button again to stop the test.

Notes: All buttons except the alternator check button are disabled in alternator check mode. The unit may detect that the alternator is out of typical voltage range because someone has added a number of accessory loads on the charging system, thereby increasing current demand from the alternator. **MAKE SURE THAT THE ALTERNATOR IS RATED TO SUPPORT THE APPLICATION.** This check may not be accurate for every make, manufacturer and model of vehicle. Check only 12 volt systems.

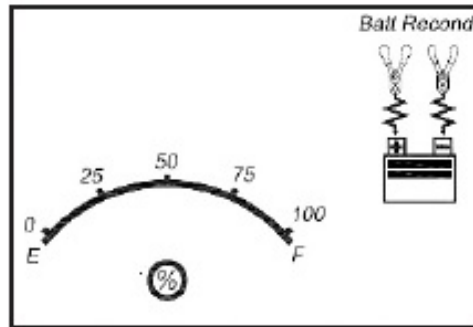
When disconnecting the charger, disconnect the AC cord, remove clamp from the vehicle chassis, and then remove the clamp from the battery terminal.

RECONDITIONING THE BATTERY

Periodic reconditioning is recommended to maintain a battery’s optimum performance. Battery recondition sends a series of electrical pulses to break up the crystalline form of lead sulfate and turn these chemicals into useful battery electrolytes. The process will stop automatically after 24 hours. To stop the process sooner, press the

battery recondition button a second time. More than 24 hours may be needed to restore performance on some batteries. If so, repeat the process.

1. Set up the battery charger and connect to the battery following steps 1 through 2 in the “Charging the Battery” section.
2. Press the battery recondition button. The LCD screen will display the following:

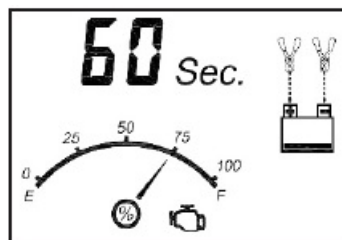



- The battery recondition indicator, the clamp icons, the battery icon and the gauge without the pointer will light solid, the bars on the battery icon will change from solid to empty (top to bottom) repeatedly and the battery recondition icons will flash.
3. To stop the reconditioning process, press the battery recondition button again. Pressing any other button during this process will have no effect.

IMPORTANT: If 5 cycles of reconditioning does not improve battery performance, discontinue and recycle the battery. The battery charger will go into charging mode after 24 hours automatically. When disconnecting the charger, disconnect the AC cord, remove clamp from the vehicle chassis, and then remove the clamp from the battery terminal.

USING THE ENGINE START FUNCTION

1. Set up the battery charger and connect to the battery following steps 1 through 2 in the “Charging the Battery” section.
2. Press the engine start button. The LCD screen will display the following:



- The digital display shows the countdown.* The battery charge gauge will indicate the battery's current charge status. The engine start icon, clamp icons and battery icon light solid, and the bars on the battery icon will change from empty to solid (bottom to top) repeatedly and the arrow icons will gradually and repeatedly move downward to the battery icon. The countdown will commence from “60” to “00”.
3. When “00” is reached, a beep will sound, engine start icon () will begin flashing. The vehicle is ready to start.
 4. Crank the engine using manufacturer's guidelines, typically in 3 to 5 second bursts. The digital display shows “5 sec.” indicating a 5-second countdown.
 5. After cranking, the unit will automatically adjust the charging current to 3A for 5 minutes and then revert to charging mode.

IMPORTANT: The function requires a resting/cooling period between attempts. Wait 4 to 5 minutes before a second attempt at starting the engine, if needed.

To stop charging, disconnect AC cord, remove clamp from vehicle chassis, and then remove clamp from battery terminal.

TROUBLESHOOTING

Problem	Possible Solution
Unit will not charge	<ul style="list-style-type: none">• Make sure all connections are secure.• Check that the charger is properly connected to a live 120 volt AC outlet.• If the battery to be charged has fallen below 2 volts, the battery cannot be recharged with this charger.

CARE AND MAINTENANCE

To reduce the risk of electric shock, unplug the battery charger from the outlet before attempting any maintenance or cleaning. Turning off the controls will not reduce this risk.

STORAGE

- Store the unit in a clean, dry, cool place when not in use.
- Clean the unit casing and cords (as necessary) with a dry cloth. Never immerse the unit in water. Ensure that unit is completely disconnected from battery and power source before cleaning.
- To maintain the operating condition and maximize the life of the charger cords, always coil them loosely for storage. Do not wrap them around the unit or crimp them with a tight band.

ACCESSORIES

Recommended accessories for use with your tool may be available from the manufacturer. If you need assistance regarding accessories, please contact the manufacturer at (877) 571-2391.

WARNING: The use of any accessory not recommended for use with this appliance could be hazardous.

SERVICE INFORMATION

- Whether you need technical advice, repair, or genuine factory replacement parts, contact the manufacturer at

TWO-YEAR LIMITED WARRANTY

The manufacturer warrants this product against defects in materials and workmanship for a period of TWO (2) YEARS from the date of retail purchase by the original end-user purchaser ("Warranty Period").

If there is a defect and a valid claim is received within the Warranty Period, the defective product can be replaced or repaired in the following ways: (1) Return the product to the manufacturer for repair or replacement at manufacturer's option. Proof of purchase may be required by manufacturer. (2) Return the product to the retailer where product was purchased for an exchange (provided that the store is a participating retailer).

Returns to retailer should be made within the time period of the retailer's return policy for exchanges only (usually 30 to 90 days after the sale). Proof of purchase may be required. Please check with the retailer for their specific return policy regarding returns that are beyond the time set for exchanges. This warranty does not apply to accessories, bulbs, fuses and batteries; defects resulting from normal wear and tear, accidents; damages sustained during shipping; alterations; unauthorized use or repair; neglect, misuse, abuse; and failure to follow instructions for care and maintenance for the product. This warranty gives you, the original retail purchaser, specific legal rights and you may have other rights which vary from state to state or province to province. This product is not intended for commercial use.

FCC STATEMENT

This device complies with part 15 of the FCC rules. Operation is subject to the following two conditions:

1. this device may not cause harmful interference.
2. this device must accept any interference received, including interference that may cause undesired operation.

This equipment has been tested and found to comply with the limits for a Class B digital device, pursuant to part 15 of the FCC Rules. These limits are designed to provide reasonable protection against harmful interference in a residential installation. This equipment generates, uses and can radiate radio frequency energy and, if not installed and used in accordance with the instructions, may cause harmful interference to radio communications. However, there is no guarantee that interference will not occur in a particular installation. If equipment does cause harmful interference to radio or television reception, which can be determined by turning the equipment off and on, the user is encouraged to try to correct the interference by one or more of the following measures:

- Reorient or relocate the receiving antenna.
- Increase the separation between equipment and receiver.
- Connect the equipment into an outlet on a circuit different from that to which the receiver is connected.
- Consult the dealer or an experienced radio/TV technician for help.

Changes or modifications not approved by the party responsible for compliance could void user's authority to operate the equipment.

SPECIFICATIONS

- **Input:** 120V AC, 60Hz, 245W
- **Output:** 12V DC, 15A
 - 40 Amp Engine Start (5 Seconds on, 5 Minutes off)

Contact

Imported by Baccus Global LLC,

- 621 NW 53rd St., Suite 450, Boca Raton, FL 33487
- www.Baccusglobal.com
- 1-877-571-2391
- Boca Raton, FL 33487
- (877) 571-2391
- **Questions?**

Call customer service hotline: 1-877-571-2391

RD032420

© 2020 Baccus Global LLC



Everstart Maxx BC40BE AUTOMATIC BATTERY CHARGER User Manual

Download PDF: [Everstart Maxx BC40BE AUTOMATIC BATTERY CHARGER User Manual](#)