



# EVERCADE EXP 2024C Standard Edition User Guide

[Home](#) » [EVERCADE](#) » EVERCADE EXP 2024C Standard Edition User Guide 

Contents

1

EVERCADE EXP 2024C Standard Edition

2

PLUG

3

Documents / Resources

3.1

References

4

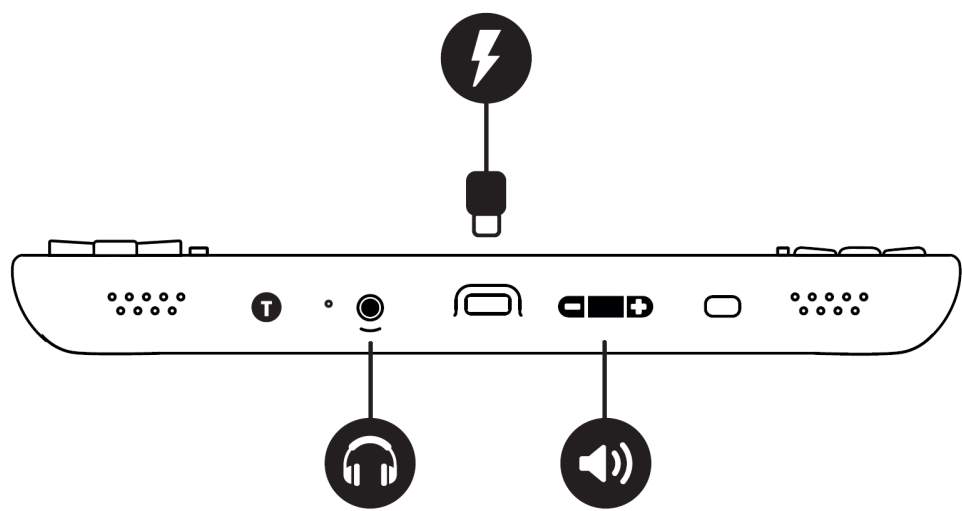
Related Posts

EVERCADE<sup>®</sup>  
EXP

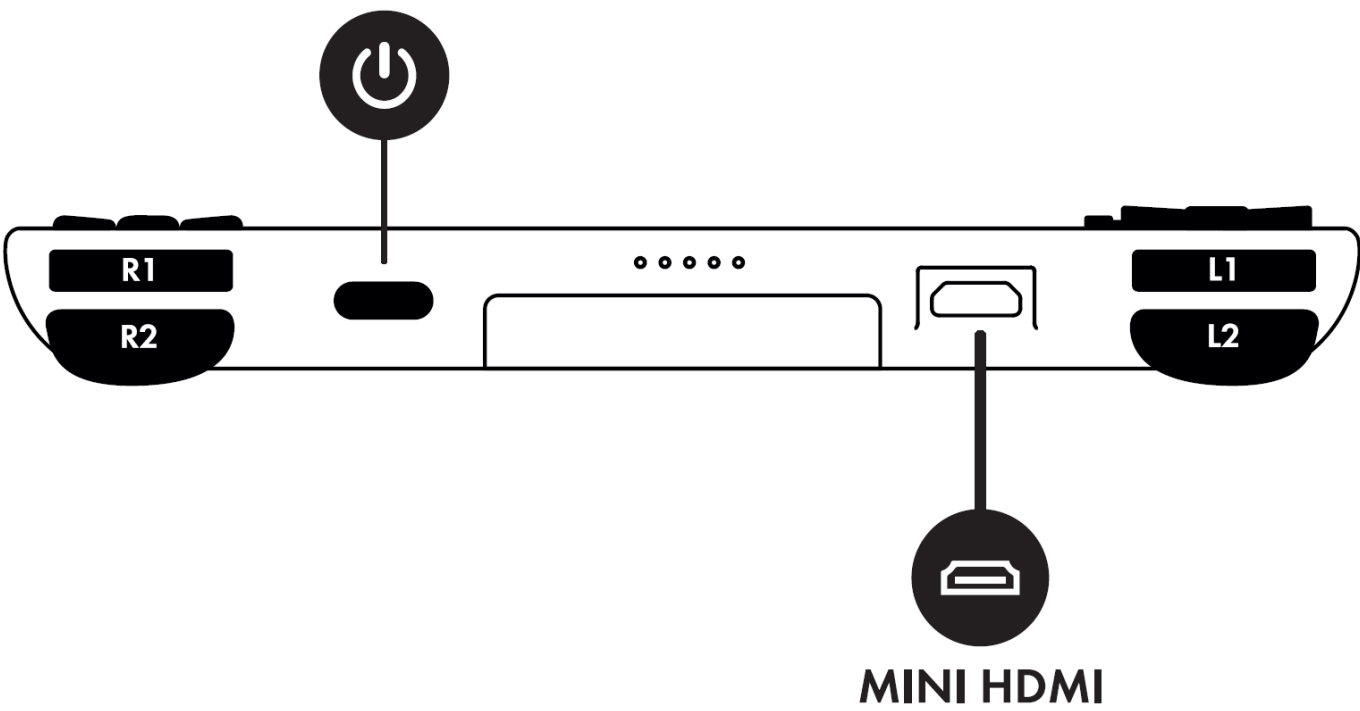
## EVERCADE EXP 2024C Standard Edition



PLUG

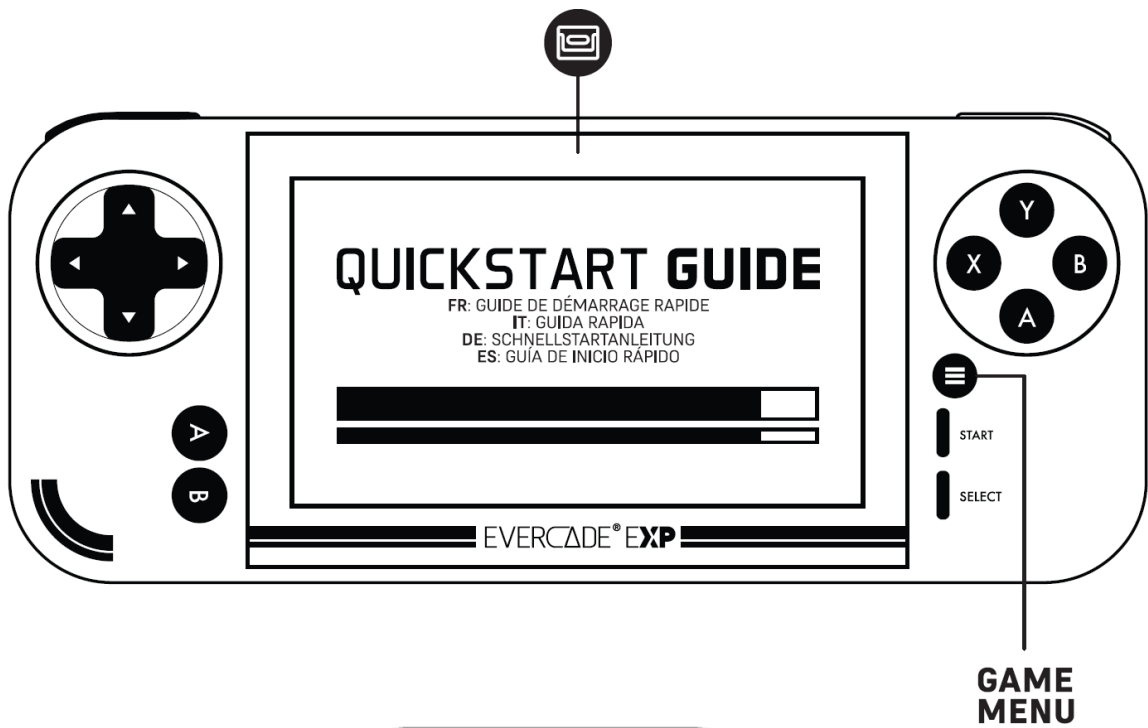


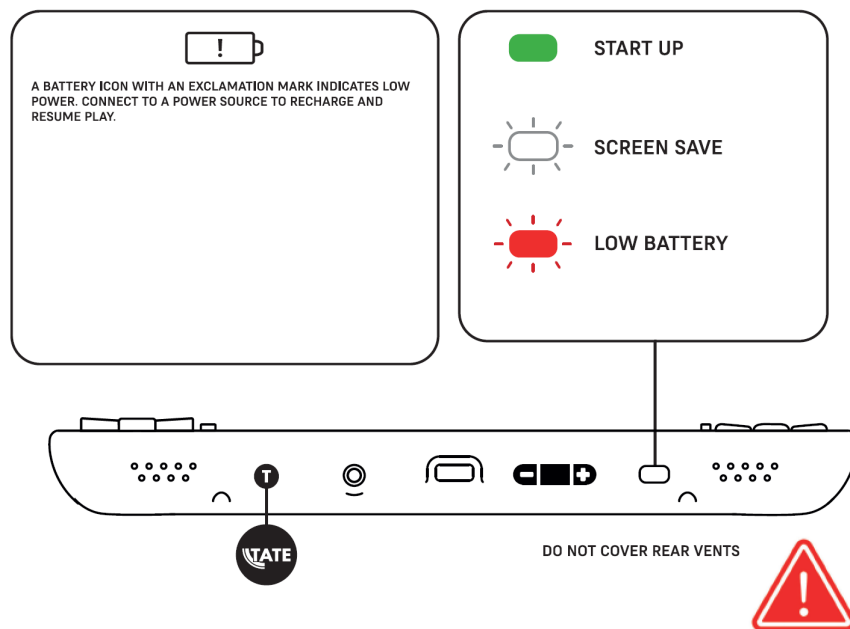
HOLD 2 SECONDS



POWER

PLAY





### Dot Not Cover Rear Vents

### DECLARATION OF CONFORMITY

HEREBY, BLAZE ENTERTAINMENT LTD, DECLARES THAT THE RADIO EQUIPMENT TYPE WLAN IS IN COMPLIANCE WITH DIRECTIVE 2014/53/EU. THE FULL TEXT OF THE EU DECLARATION OF CONFORMITY IS AVAILABLE AT THE FOLLOWING INTERNET ADDRESS: [HTTPS://EVERCADE.CO.UK/SUPPORT](https://evercade.co.uk/support)

1	SUPPORTING MODE(S)	WLAN 2.4G			
2	TEST MODULATION	WLAN(DSSS/OFDM)			
3	DEVICE CLASS	B			
4	OPERATING FREQUENCY RANGES	BAND	Tx (MHz)	Rx (MHz)	MAX FREQUENCY POWER
		WLAN 2.4G	2412-2462		17dBm

A COMPATIBLE USB AC ADAPTER (NOT INCLUDED) IS REQUIRED TO USE THIS CONSOLE.  
USE A 5V/1-3A OUTPUT AC ADAPTER WITH A USB PORT.

[evercade.co.uk/support](https://evercade.co.uk/support)

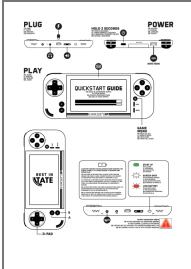


**BLAZE**® | **EVERCADE**®  
ENTERTAINMENT

© 2024 Blaze Entertainment Ltd.



Documents / Resources



[EVERCADE EXP 2024C Standard Edition](#) [pdf] User Guide  
2024C, EXP 2024C Standard Edition, EXP 2024C, EXP, 2024C

## References

- [User Manual](#)

**Manuals+, Privacy Policy**

This website is an independent publication and is neither affiliated with nor endorsed by any of the trademark owners. The "Bluetooth®" word mark and logos are registered trademarks owned by Bluetooth SIG, Inc. The "Wi-Fi®" word mark and logos are registered trademarks owned by the Wi-Fi Alliance. Any use of these marks on this website does not imply any affiliation with or endorsement.