



EVERBILT 9235969 Single-Touch Latch with Strike User Guide

[Home](#) » [Everbilt](#) » EVERBILT 9235969 Single-Touch Latch with Strike User Guide 

Contents

- [1 EVERBILT 9235969 Single-Touch Latch with Strike](#)
- [2 Product Information](#)
- [3 Package Contents](#)
- [4 Installation Instructions](#)
- [5 Usage Instructions](#)
- [6 Warranty Information](#)
- [7 TOOLS REQUIRED](#)
- [8 PACKAGE CONTENTS OF THE PRODUCT](#)
- [9 Installation](#)
- [10 Warranty](#)
- [11 Documents / Resources](#)
 - [11.1 References](#)
- [12 Related Posts](#)



EVERBILT 9235969 Single-Touch Latch with Strike



Product Information

- Model Number: 9235969
- Item Number: 1002 800 012
- Product Name: Single-Touch Latch with Strike

Package Contents

- Use and Care Guide
- Single-Touch Latch with Strike
- Phillips screwdriver (not included)
- Catch x 1
- Plate x 1
- Catch Screw x 4
- Plate Screw x 1

Installation Instructions

1. Determine the installation location: You can attach the catch (A) on the top, bottom, or side of the cabinet.
2. Install the catch: Use the catch screws (C) to attach the catch (A) to your chosen installation location.
3. Install the plate: Attach the plate (B) to the cabinet door using the plate screw (D). Ensure that the plate (B) is aligned with the catch (A) when you close the cabinet door.

Usage Instructions

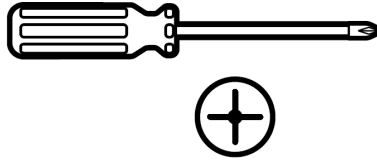
1. To open the cabinet door, press down on the plate (B).
2. To close the cabinet door, simply push it shut until the latch clicks into place.

Warranty Information

Please contact 1-800-305-1726 for further assistance.

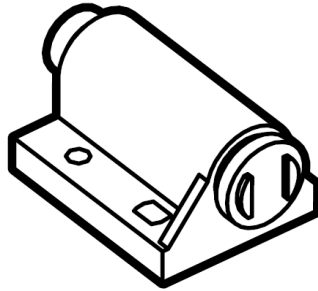
TOOLS REQUIRED

-

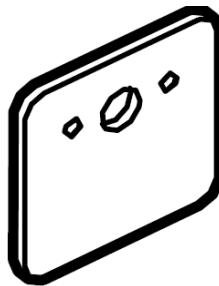


Phillips screwdriver

PACKAGE CONTENTS OF THE PRODUCT



- Catch x 1



- Plate x 1



- Catch Screw x 4

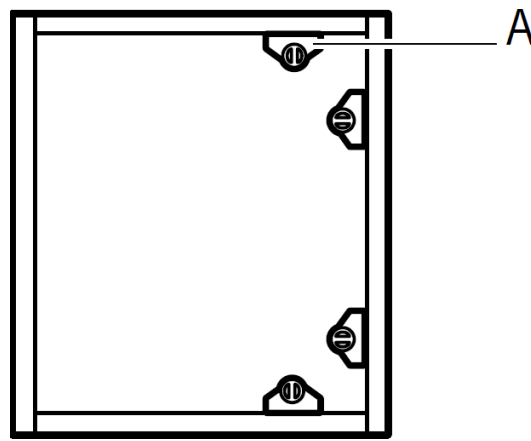


- Plate Screw x 1

Installation

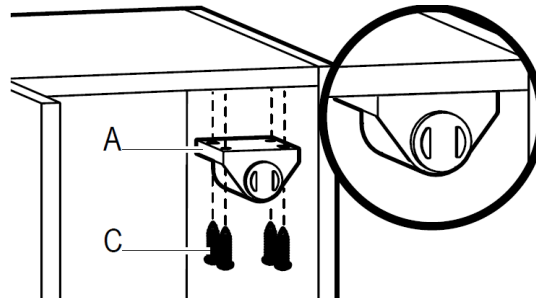
1. INSTALLADETERMINING THE TION LOCATION

- You can attach the catch (A) on the top, bottom, or side of the cabinet.



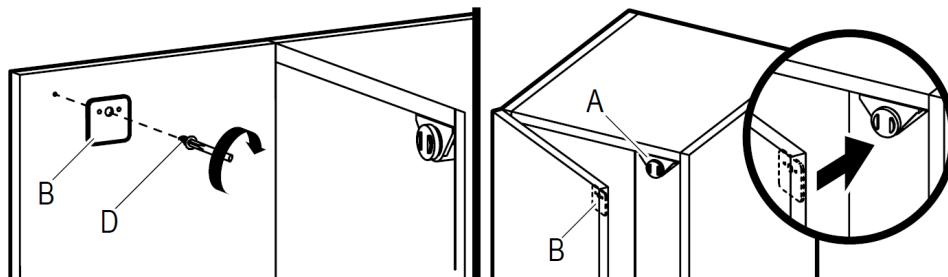
2. INSTALLING THE CATCH

- Use the catch screws (C) to attach the catch (A) to your chosen installation location.



3. INSTALLING THE PLATE

- Attach the plate (B) to the cabinet door using the plate screw (D). Ensure that the plate (B) is aligned with the catch (A) when you close the cabinet door.



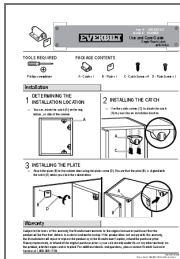
Warranty

Subject to the terms of this warranty, the Manufacturer warrants to the original consumer purchaser that the product will be free from defects in material and workmanship. If the product does not comply with this warranty, the Manufacturer will repair or replace the product or, at the Manufacturer's option, refund the purchase price. Repair, replacement, or refund of the original purchase price is your sole remedy under this or any other warranty on the product, whether expressed or implied. For additional details and questions, please contact Everbilt Customer Service at 1-800-305-1726.

[HOMEDEPOT.COM](https://www.homedepot.com)

Please contact 1-800-305-1726 for further assistance.

Documents / Resources



[EVERBILT 9235969 Single-Touch Latch with Strike](#) [pdf] User Guide
9235969 Single-Touch Latch with Strike, 9235969, Single-Touch Latch with Strike, Single-Touch Latch, Latch

References

-  [The Home Depot](#)

[Manuals+](#).