



## EVENT LIGHTING CB1G Crowd Barrier with Gate User Manual

[Home](#) » [EVENT LIGHTING](#) » EVENT LIGHTING CB1G Crowd Barrier with Gate User Manual 

# EVENT LIGHTING

CB1G Crowd Barrier with Gate  
User Manual



For your safety, please read this user manual carefully before initial use.

Event Lighting reserves the right to revise the manual at any time. Information and specifications within this manual are subject to change without notice. Event Lighting assumes no liability or responsibility for any errors or omissions. Please consult Event Lighting for any clarification or information regarding this item.

## Contents

- [1 Safety Instructions](#)
- [2 Unpacking](#)
- [3 Undoing](#)
- [4 Documents / Resources](#)
  - [4.1 References](#)
- [5 Related Posts](#)

## Safety Instructions

### Warning

1. It is recommended that two people lift each CB1G Crowd Barrier with Gate into place. Please observe your local occupational health and safety guidelines.
2. There must be at least 2 x CB1 Crowd Barriers on either side of the CB1G Crowd Barrier Gate, as the units lock together using latches and bolts. A single unit on its own will not be effective and runs the risk of collapse.
3. There must be at least 2 x CB1 Crowd Barriers placed in between any CB1G Crowd Barrier Gate and CB1R Crowd Barrier Corner.
4. To set up an effective crowd barrier, the CB1G crowd barrier gate must be set up using these instructions relating to latching the units together to avoid the risk of collapse or gaps forming between pieces, that may result in injury.
5. In situations where a high number of people may be present, it is recommended that there is crowd control employed, to avoid the risk of excessive force being placed on the crowd barrier.
6. When there is a crowd and they are pushing and moving the barrier, periodic checks are to be made on all coffin latches and bolts to ensure that the crowd barrier is still intact and not damaged. Intervals of your periodic checks will be determined by your risk assessment of the event, where the crowd barrier is being used.
7. The CB1G crowd barrier gate, the CB1 crowd barrier, and the CB1R crowd barrier corner should only be used on a flat surface.

## Unpacking

Each CB1 Crowd Barrier comes with a bolt, that is used to secure one unit to the next, and lock the upright into place. Upon unpacking, this bolt is in a zip lock bag, attached to the frame of the crowd barrier gate. This bolt is used to secure the CB1G Crowd Barrier Gate into place.

### Set up of CB1

1. Place the first flattened unit on a flat surface, with the sloped front facing in the direction that the crowd will be.
2. Lift the wall, which has a curved top, from the end of the sloped front, towards an upright position. The smaller frame, hinged to the wall, should fall in place as the wall is raised, resting behind the crowd-facing side of the wall. By pushing near the bottom of the wall from behind, be sure that the wall is as close to the platform as possible.



**Note:** To prevent movement while setting up, place the provided bolt partially through the hole in the wall frame, so it makes contact with the floor frame. Later, this bolt will be pushed into the next adjoining unit CB1G, Crowd Barrier Gate.

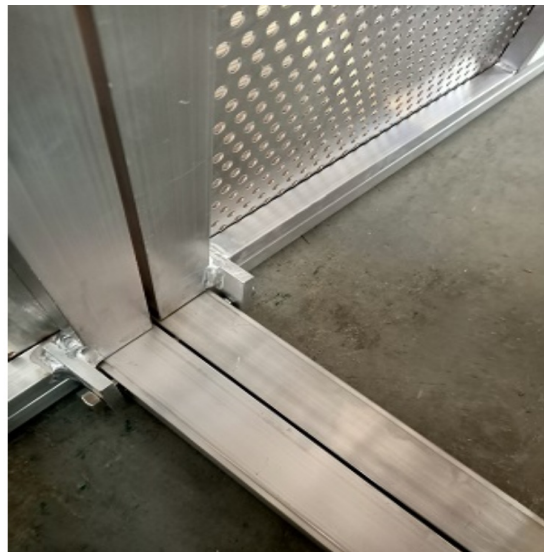


### **Set-Up of CB1G**

Lay the CB1G – Crowd Barrier Gate in line with the previous unit, with the sloped front facing in the direction the crowd will be, using the bolt inserted to the previous unit as a guide to line up the crowd barrier gate. Lift the gate into place, following the same method as the previous crowd barrier unit.



3. Push the bolt through both units, until there is enough room to tighten the nut to the bolt. Be sure to tighten the nut, using a spanner.



4. Using an Allen key, turn the floor latch anti-clockwise until it has grabbed onto the adjacent unit and can move no further.





5. Using an Allen key, turn the wall latch anti-clockwise until it has grabbed onto the adjacent unit and can move no further.



**Note:** Ensure the handrails line up where they should be, if not loosen up the bolts with the Allen key and the coffin latch and realign and tighten again.

6. Once the latches are secure, the crowd barrier is in place. Repeat the process until the wall is complete.



Note that all barriers and corners will follow a similar process, refer to individual manuals on the correct and safe ways to connect those components.


## Undoing



Using an Allen key, turn the latches clockwise to undo, making sure to turn all the way to release each part from the other. Always start from the outer-most units first. Loosen nut of the floor holding screw, and remove the screw. Lift the smaller frame behind the wall and carefully push forward on the wall part from near the base, while standing on the floor and lowering the wall towards the collapsed position, making sure the smaller frame folds in with it.

Be sure to keep hands and fingers away from folding parts.  
Repeat the process for each crowd barrier.

## Documents / Resources

 <p><small>For your safety, please read this user manual carefully before using the product. It contains important information about the correct use of the product and the safety precautions that must be followed. Please do not use the product if you are unable to understand the instructions. Please do not use the product if you are unable to understand the instructions. Please do not use the product if you are unable to understand the instructions.</small></p>	<p><a href="#">EVENT LIGHTING CB1G Crowd Barrier with Gate</a> [pdf] User Manual CB1G Crowd Barrier with Gate, CB1G, Crowd Barrier with Gate</p>
--	--

## References

- [Australia Entertainment Lighting Wholesaler | Event Lighting](#)