



Eve Shutter Switch Smart Controller User Manual

[Home](#) » [eve](#) » Eve Shutter Switch Smart Controller User Manual 

Contents

- [1 Eve Shutter Switch Smart Controller](#)
- [2 Meet Eve Shutter Switch](#)
- [3 Get Started](#)
- [4 Installation – Preparation](#)
- [5 Mounting](#)
- [6 Setup](#)
- [7 Enjoy](#)
- [8 Reset](#)
- [9 Disassembly](#)
- [10 Documents / Resources](#)
- [11 Related Posts](#)

eve light switch @

Eve Shutter Switch Smart Controller



Product Information

This product is a device that is designed to perform multiple functions. It has various features and settings that can be adjusted to suit your needs. The product is equipped with different modes and options to enhance its

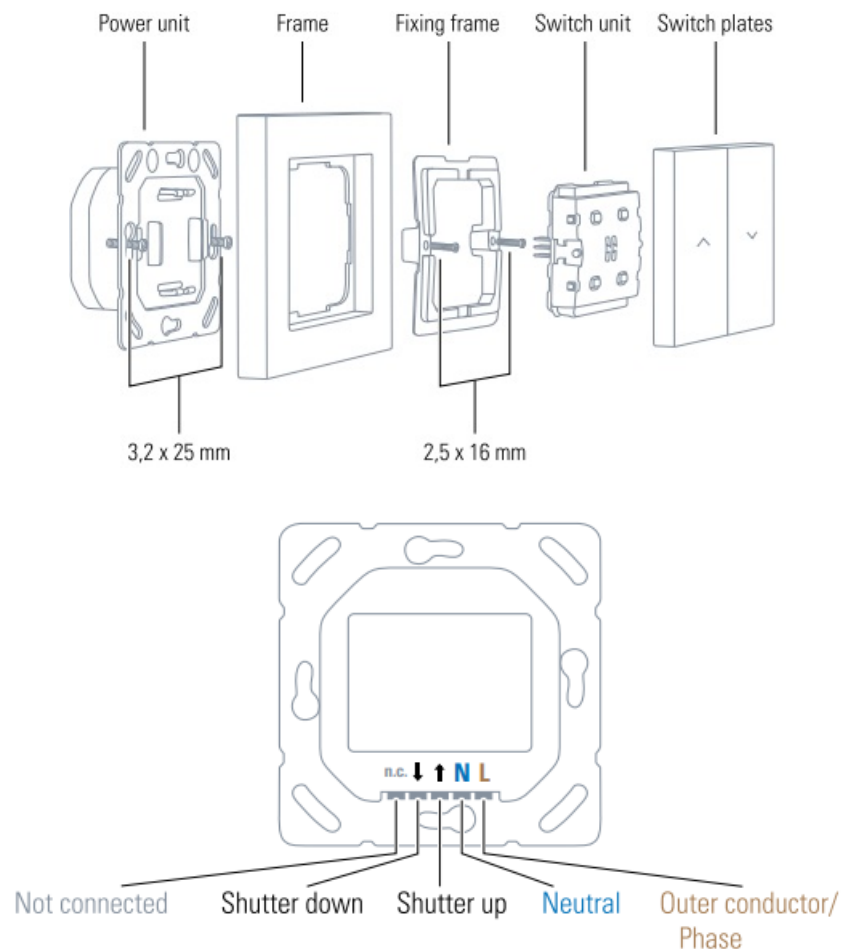
functionality.

Product Usage Instructions

1. Start by connecting the power source to the device.
2. Locate the power switch and turn it on.
3. Refer to the user manual for specific instructions on how to navigate through the different modes and options.
4. Use the designated buttons or controls to select the desired mode or setting.
5. Make sure to follow any safety guidelines mentioned in the user manual.
6. If applicable, connect any external devices or accessories according to the provided instructions.
7. Once you have selected the desired mode or setting, begin using the device for its intended purpose.
8. Refer to the user manual for any troubleshooting tips or additional features that may enhance your experience with the product.
9. When you are finished using the device, turn off the power switch and disconnect it from the power source.

Please note that this is a general guide. For more detailed instructions and specific information about your product, refer to the user manual that came with your device.

Meet Eve Shutter Switch



- Voltage: 230 V- 50 / 60 Hz
- max, connected load: 750 VA
- max, load current: 6 A (max, 5 A per channel)
- Connection terminals: 1,5 mm' rigid wire

- Flush-mounted socket dimension: 0 60 mm, min, 35 mm depth
- Ambient temperature: -10 °C to 50 °C
- Operating humidity: max, 85%, non-condensed
- Protection rating: IP30
- Frequency range: 2402 – 2480 MHz (BLE) / 2405 – 2480 MHz (Thread)
- Max, RF Power (EIRP): 20 dBm

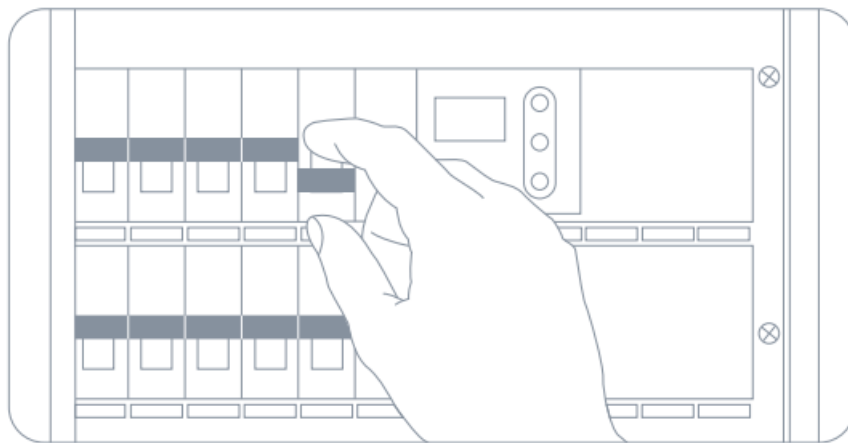
Get Started

CAUTION – Risk of electric shock!

- Only authorized electricians may connect, install and set up Eve Shutter Switch.
- Before installation, ensure the system is disconnected from the power supply!
- Eve Shutter Switch is used to directly switch permanently connected electrical loads with a supply voltage of 230 V-. Eve Shutter Switch is designed for use in household and similar fixed installations. Before installation, ensure suitability by reviewing the technical data and the operating conditions.
- Eve Shutter Switch must not be used in conjunction with life-support systems or other devices that could put the life or health of humans and animals at risk or risk property damage.

Installation – Preparation

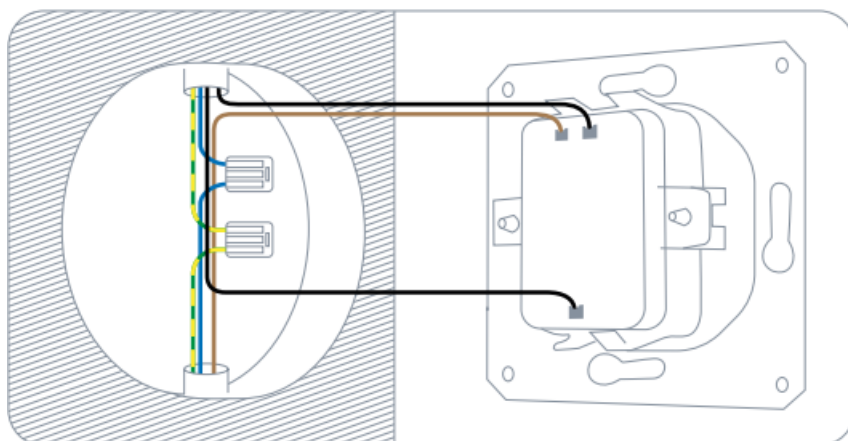
In your fuse box, switch off the fuse connected to your shutter switch. Press the buttons on your current shutter switch a few times to make sure that there is no current flowing.



Remove your current shutter switch

Loosen your existing shutter switch and pull it out. Note the current wiring and take a photo of it if necessary. You can usually tell which line is the current-carrying input (LI and which lines leads to the shutter by the direction from which the cables are led into the box and by the inscription on your old shutter switch.

Eve Shutter Switch can only be installed if there is a neutral line IN, usually blue) in your outlet.



Remember which line is connected to the input on your old shutter switch (L), for example by marking it with adhesive tape. Then disconnect the existing wiring and remove your old shutter switch.

Connect Eve Shutter Switch

↓ : Shutter down

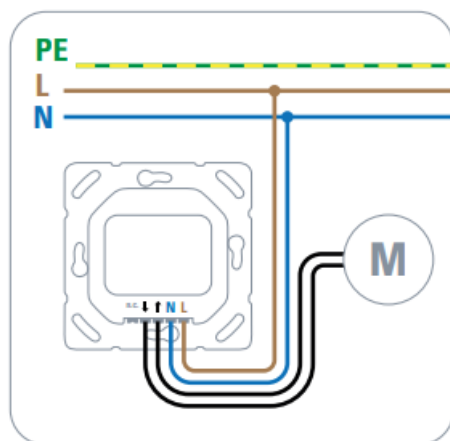
↑ : Shutter up

N: Neutral line

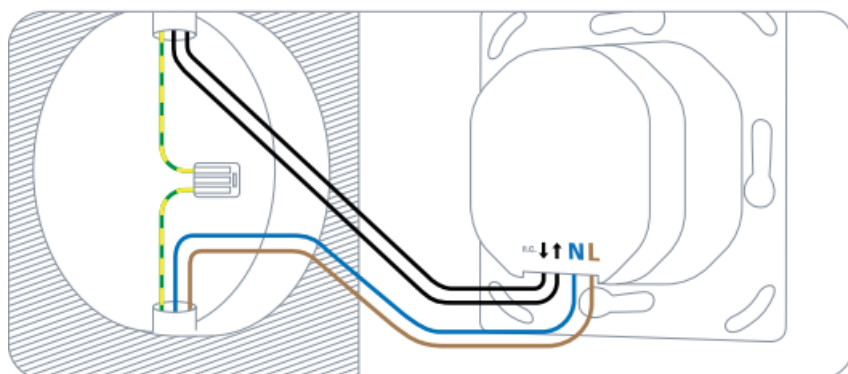
Eve Shutter Switch requires that a neutral line is connected. If the outlet is not equipped with a neutral line, Eve Shutter Switch is incompatible with this outlet.

L: Outer conductor/ phase (current-carrying line)

n.c.: not connected

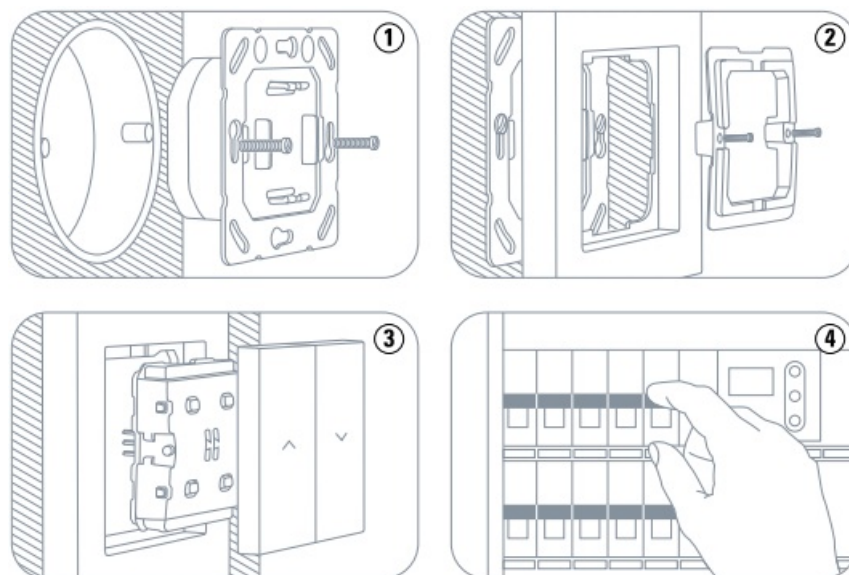


Eve Shutter Switch does not require a connection to a protective conductor/ ground wire (PE, usually green/yellow)



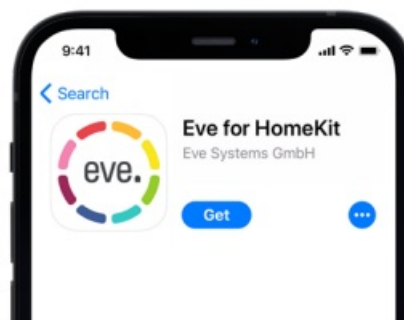
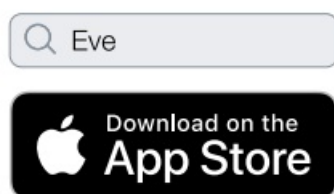
Mounting

1. Place the power unit in the flush-mounted socket and secure it with the 3.2 x 25 mm screws (included).
2. Place the supplied or your existing frame on the power unit and secure the fixing frame with the supplied screws.
3. Insert the switching unit and then press the switch plates onto it.
4. In your fuse box, switch on the fuse dedicated to the circuit of that shutter switch. You should now be able to move your shutter by pressing Eve Shutter Switch.



Setup

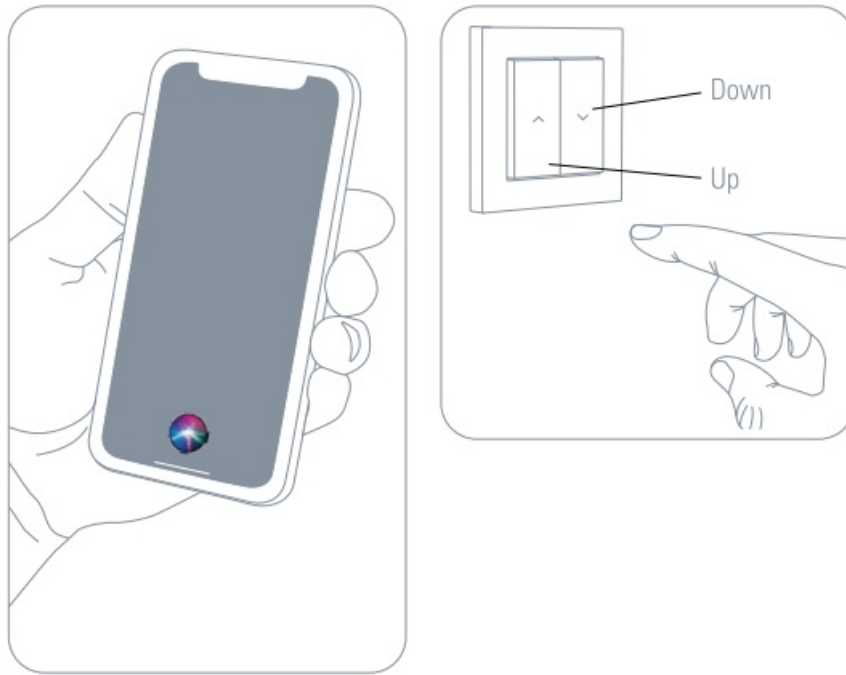
1. Download the Eve app from the App Store.
 2. Open the Eve app and tap Add Accessories. Eve will now guide you through the setup process.
- If you already have Eve set up, open Eve settings and add Eve Shutter Switch.



To add Eve Shutter Switch, use the HomeKit code on the back of this manual.

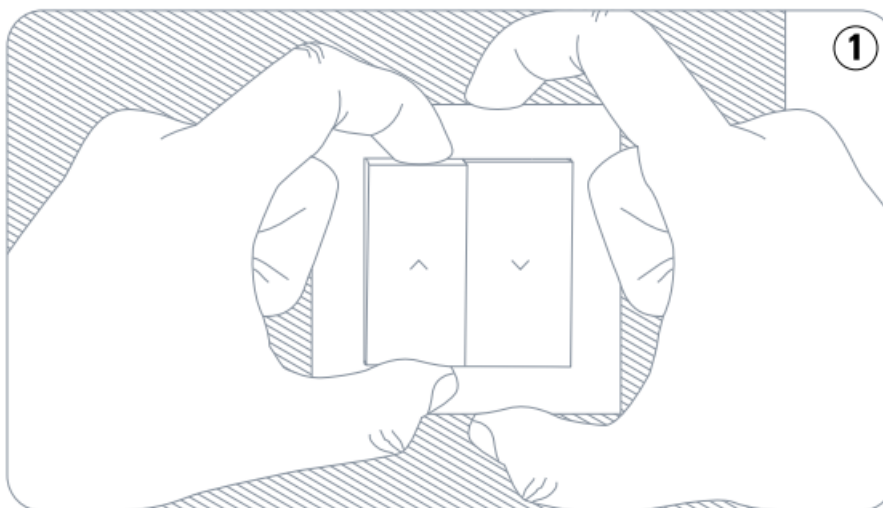
Enjoy

- Operate your shutter using the app or a Siri voice command.
- You can also operate your shutter directly via Eve Shutter Switch.

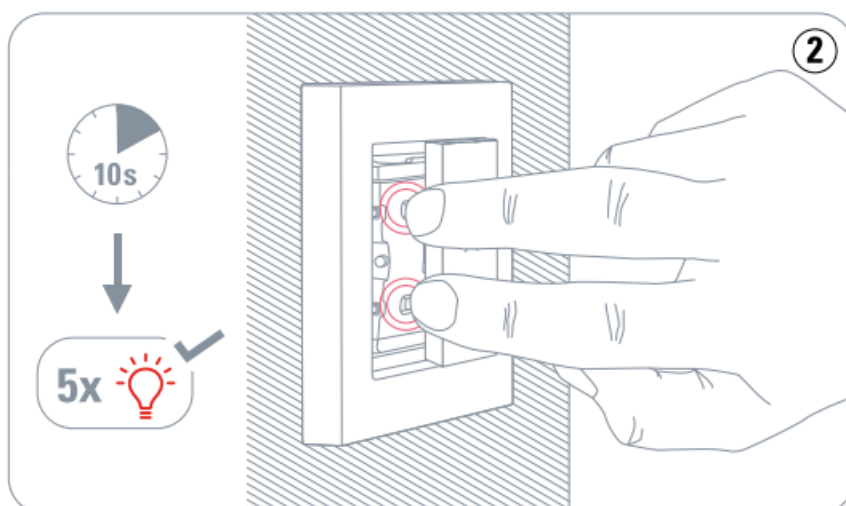


Reset

Remove the left switch plate by pulling down this switch plate from top edge.

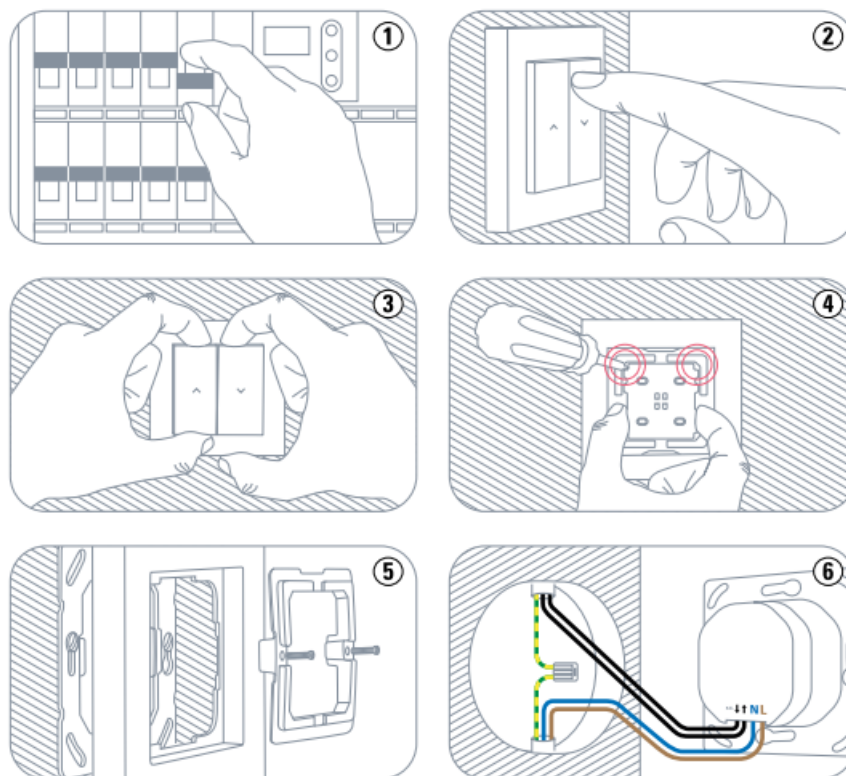


Press both left buttons simultaneously for 10 seconds.



Disassembly

1. In your fuse box, switch off the fuse connected to your shutter switch.
2. Make sure that there is no current flowing by pressing the buttons on Eve Shutter Switch a few times.
3. Remove the switch plates by pulling down each rocker switch evenly from top edge.
4. Remove the switching unit by inserting a screwdriver into each of the corners and levering it out evenly.
5. Loosen the screws, remove the fixing unit and remove the frame.
6. You can now remove the power unit from your flush-mounted socket and disconnect the cables.



Please keep your Home Kit Setup Code in a safe place. You need it to securely add Eve to your home, and nobody but you has a copy.

Documents / Resources

eve shutter switch ©	Eve Shutter Switch Smart Controller [pdf] User Manual Shutter Switch Smart Controller, Shutter Switch, Smart Controller, Controller
----------------------	--