



## Eve Button User Guide

[Home](#) » [eve](#) » Eve Button User Guide 

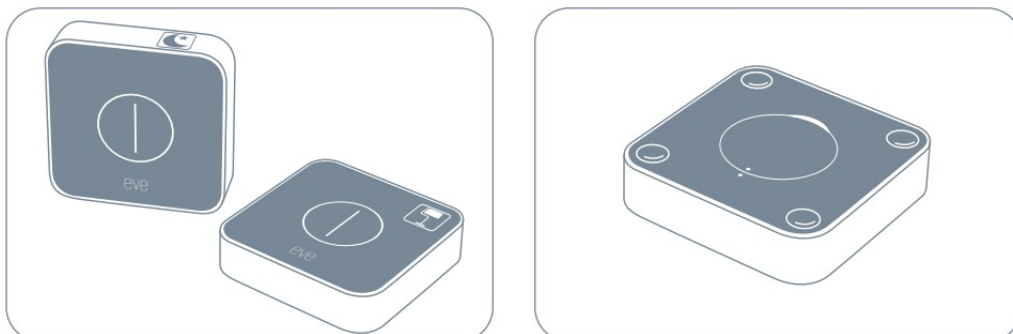
# eve button ⓘ

Get Started

1. Press Eve Button once to activate.



! Customize Eve Button with the included labels and rubber feet.



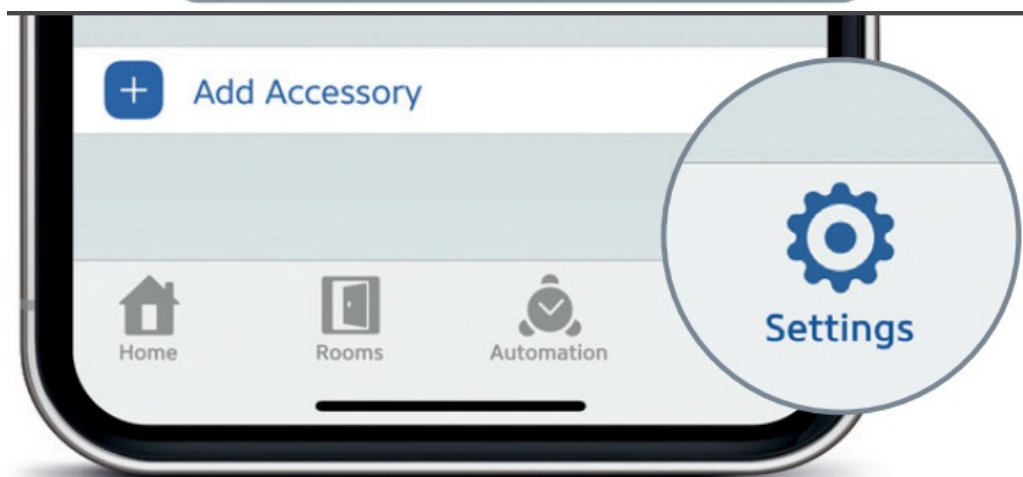
2. Download the Eve app from the App Store.

🔍 Eve



3. Open the Eve app and tap Add Accessory. Eve will now guide you through the setup process.

Add Accessory



## Contents

- 1 Legal Information
- 2 Battery & Reset
- 3 Documents / Resources
  - 3.1 References
- 4 Related Posts

## Legal Information

If you have already set up another accessory, go to Settings in Eve to add Eve Button to your home.

This device complies with part 15 of the FCC Rules and Industry Canada licence-exempt RSS standard(s). Operation is subject to the following two conditions: (1) This device may not cause interference, and (2) this device must accept any interference received, including interference that may cause undesired operation.

This equipment has been tested and found to comply with the limits for a Class B digital device, pursuant to part 15 of the FCC Rules. These limits are designed to provide reasonable protection against harmful interference in a residential installation. This equipment generates, uses, and can radiate radio frequency energy and, if not installed and used in accordance with the instructions, may cause harmful interference to radio communications. However, there is no guarantee that interference will not occur in a particular installation. If this equipment does cause harmful interference to radio or television reception, which can be determined by turning the equipment off and on, you are encouraged to try to correct the interference by one or more of the following measures: reorient or relocate the receiving antenna; increase the separation between the equipment and receiver; consult the dealer or an experienced radio/TV technician for help. This Class B digital apparatus complies with Canadian ICES-003. This equipment complies with FCC RF and IC RSS-102 radiation exposure limits set forth for an uncontrolled environment. This equipment should be installed and operated with a minimum distance of 0.5 centimeters between the radiator and your body. This transmitter must not be co-located or operating in conjunction with any other antenna or transmitter. The antennas used for this transmitter must be installed to provide a separation distance of at least 0.5 cm from all persons and must not be co-located or operating in conjunction with any other antenna or transmitter.

Changes or modifications not expressly approved by Eve Systems could void your authority to operate this device. Purpose of control: operating control; construction of control: plug-in operating control; type 1 action, operating time: continuous.

For questions about compliance with FCC regulations, please contact Compliance Officer, Eve Systems, 100 Pine St., Suite 1250, San Francisco CA 94111, USA.

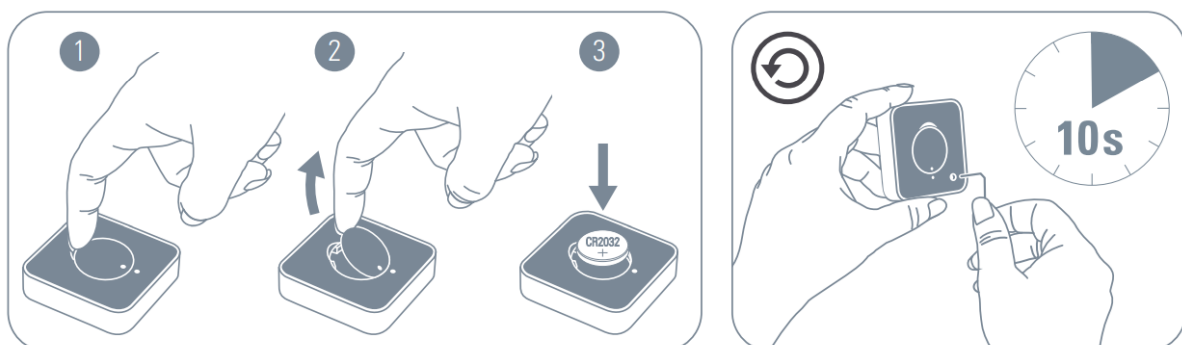
Hereby, Eve Systems declares that this device is in compliance with the essential requirements and other relevant provisions of Directive 2014/53/EC. The declaration of conformity is available at [www.evehome.com/doc](http://www.evehome.com/doc)

Frequency range: 2402 – 2480 MHz, Max RF e.i.r.p power < 3dBm

Product: 10EAU9901 • Model: 20EAU9901 • Part: 51EAU9904 • FCC ID: SNE-TSW-001 • IC: 11192A-TSW001

## Battery & Reset

When replacing the battery, use your finger to open the enclosure. Insert a new CR2032 battery with the positive (+) side up, and push firmly while closing the cover.





Please keep your HomeKit setup code in a safe place. You need it to securely add Eve to your home, and nobody but you has a copy.

# eve button ⓘ



Room\_\_\_\_\_

Notes\_\_\_\_\_

## Documents / Resources

	<a href="#">eve Eve Button</a> [pdf] User Guide Eve, Button
---	--

## References

- e. [Declaration of Conformity | evehome.com](#)