



eve Door and Window Wireless Contact Sensor User Guide

[Home](#) » [eve](#) » eve Door and Window Wireless Contact Sensor User Guide 

Contents

- [1 eve Door and Window Wireless Contact Sensor](#)
- [2 Get started](#)
- [3 Enjoy](#)
- [4 FCC STATEMENT](#)
- [5 Reset](#)
- [6 Documents / Resources](#)
 - [6.1 References](#)

eve door & window

eve Door and Window Wireless Contact Sensor



Get started

- Insert the included ½ AA battery and place Eve Door & Window so that the areas marked with dots are facing each other. Use the included spacers to bring the small element to the ideal height.



- The built-in LED will light up each time Eve Door & Window detects an open/closed state change, so you can be sure everything works as expected before attaching the adhesive firmly.
- If you want to replace the ½ AA (ER14250 3.6 V) battery, simply pull the larger element downwards – no need to remove and re-attach the carefully positioned adhesive.
- Add Eve Door & Window to the platform of your choice and make sure to have a compatible Thread Border Router.
- Learn more at evehome.com/hub. Mehr dazu auf evehome.com/hub. Pour en savoir plus, consultez la page eve home.corn/hub.



Enjoy



- See the current open/closed state.
- View time and duration statistics.
- Access Eve Door & Window using the Eve app, or the apps or voice assistants of your preferred platforms.
- Feature sets may vary, depending on your platform.
- More information at evehome.com/eve-door-window.



100% Privacy

evehome.com/privacy



No Eve Cloud



No Registration



No Tracking

Eve is designed to safeguard your privacy. Eve does not harvest your personal data by forcing you to set up an account or register your devices. No Eve cloud or any proprietary technology can ever breach your most personal data. Learn more at evehome.com/privacy.

Legal Information

FCC STATEMENT

This device complies with part 15 of the FCC Rules and Industry Canada license-exempt RSS standard(s).

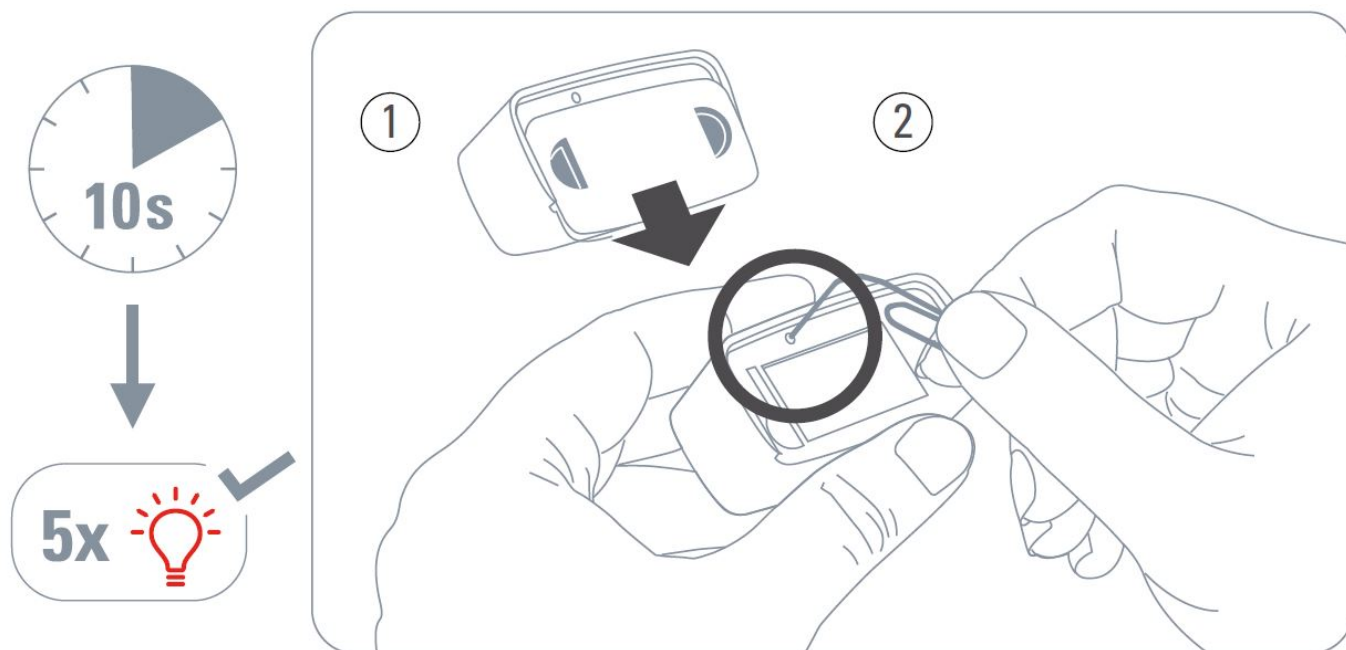
Operation is subject to the following two conditions

1. This device may not cause interference, and
2. this device must accept any interference received, including interference that may cause undesired operation.

This equipment has been tested and found to comply with the limits for a Class B digital device, pursuant to part 15 of the FCC Rules. These limits are designed to provide reasonable protection against harmful interference in a residential installation. This equipment generates, uses, and can radiate radio frequency energy and, if not installed and used in accordance with the instructions, may cause harmful interference to radio communications. However, there is no guarantee that interference will not occur in a particular installation. If this equipment does cause harmful interference to radio or television reception, which can be determined by turning the equipment off and on, you are encouraged to try to correct the interference by one or more of the following measures: reorient or relocate the receiving antenna; increase the separation between the equipment and receiver; consult the dealer or an experienced radio/TV technician for help.

- This Class B digital apparatus complies with Canadian ICES-003
- This equipment complies with FCC RF, IC RSS-102, and CE radiation exposure limits set forth for an un-controlled environment.
- This equipment should be installed and operated with a minimum distance of 20 centimeters between the radiator and your body. This transmitter must not be co-located or operating in conjunction with any other antenna or transmitter.
- Changes or modifications not expressly approved by Eve Systems could void your authority to operate this device. Purpose of control: operating control; construction of control: plug-in operating control; type 1 action, operating time: continuous.

Reset



Happily connected?

Write a review and tell your friends Stay in touch and discover more via.



• Facebook facebook.com/meeteve.



• Twitter @meeteve.

-  Eve Newsletter evehome.com/newsletter.
-  YouTube @MeetEve
-  Instagram @meet_eve
-  Eve Blog blog.evehome.com.


Something amiss?

Reach out now: Visit our knowledge base or contact our support team.

-  help.evehome.com.
-  evehome.com/contact.

Please keep your Matter setup code in a safe place. You need it to securely add Eve to your home, and nobody but you has a copy.

Documents / Resources

	eve Door and Window Wireless Contact Sensor [pdf] User Guide 51EBN9953, Door and Window Wireless Contact Sensor, Wireless Contact Sensor, Contact Sensor, Sensor
-------------------------------------------------------------------------------------	-------------------------------------------------------------------------------------------------------------------------------------------------------------------------------------

References

- e. [Eve Blog | evehome.com](https://evehome.com)
- e. [Newsletter | evehome.com](https://evehome.com)
- e. [Privacy is paramount | evehome.com](https://evehome.com)

[Manuals+](#).