



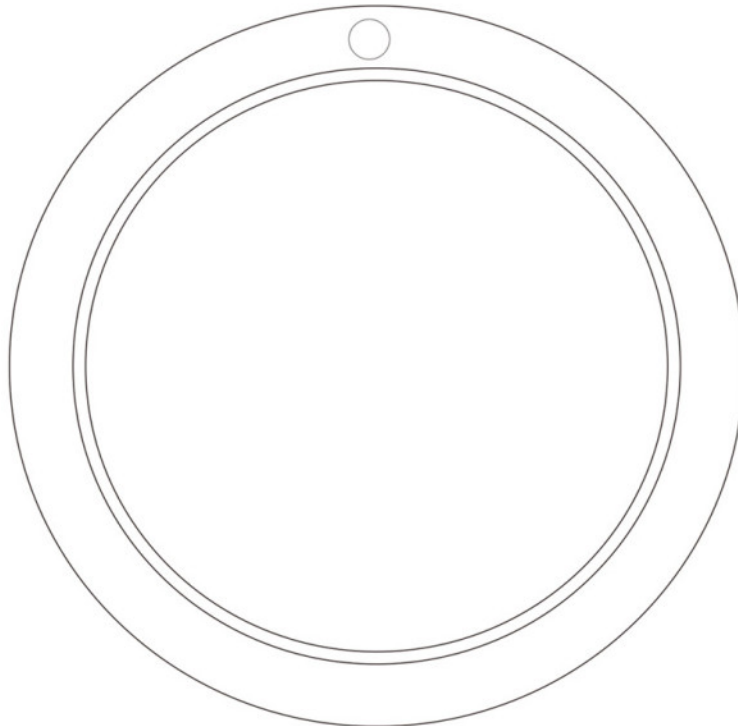
evatmaster B07JQD3JZ3 Motion Sensor LED Ceiling Light User Manual

[Home](#) » [evatmaster](#) » evatmaster B07JQD3JZ3 Motion Sensor LED Ceiling Light User Manual 



E.VAT MASTER

**Motion Sensor Ceiling Light
User Manual**



Contents

- 1 Ceiling Light Instructions
- 2 Basic parameters
- 3 Function Description
- 4 Installation Guide
- 5 Accessory List
- 6 After Sales
- 7 Documents / Resources
 - 7.1 References

Ceiling Light Instructions

► In order to use the lamp correctly, please read this manual carefully before installation

Basic parameters

Product name: LED Ceiling Light	Wattage: 18W
Voltage range: AC85-265V 50/60Hz	Color temperature: 6000K/4000K/3000K
Lumen:1600LM	Sensing range: 360°
Lamp bead type: SMD2835	Sensing distance: up to 6m/20ft
Protection class: IP44	Material: PC
CRI:85	Dimensions:Ø230*25mm

Function Description

A: Three Color Temperature Adjustment

► The color temperature of this LED ceiling light can be adjusted through the wallswitch between 6000K (Cold White) /A000K (Day Light) / 3000K (Warm White).

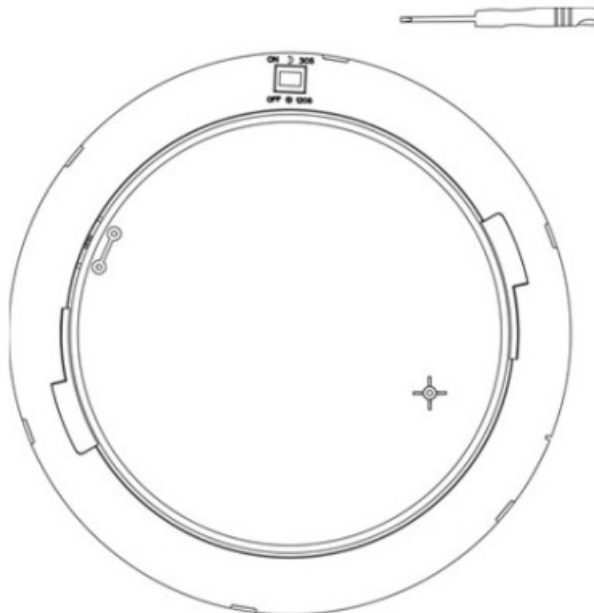
B: Motion Sensor

► **Warm Tips:**Before installing the fixture, use an accessory screwdriver to adjust the sensing mode you need.

► **ON/OFF:** You can turn on or off the sensing function according to the actual situation.

► **TIME:** Automatically turns on when approaching. The delay time can be set to 30S or 120S. The maximum sensing distance is 6m/20ft. When the motion sensing i & function is turned off, it can be used as a normal ceiling light.

► **MODE:** In the “SUN” position, It can be lit day and night; in the “moon” position, it can only be lit at night.



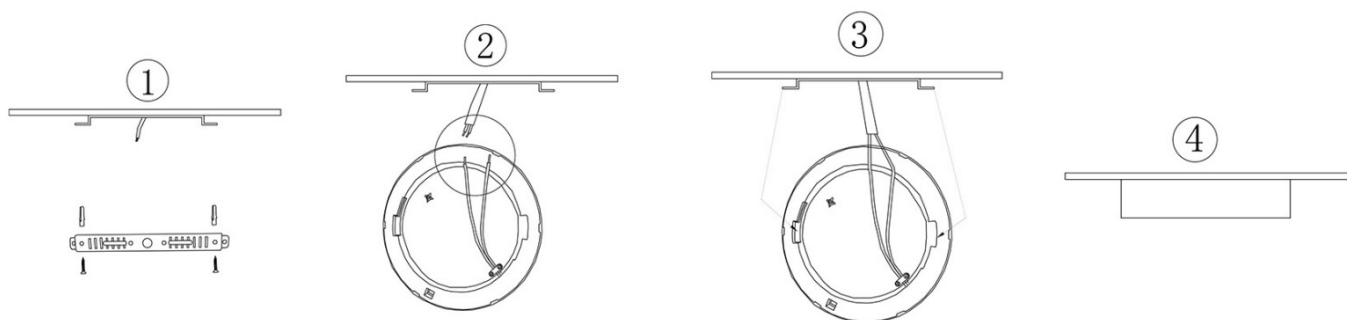
C:Memory Function ONS

► The light needs to be switched off for more than 7 seconds and the memory function is effective when the light is switched on again.

Installation Guide

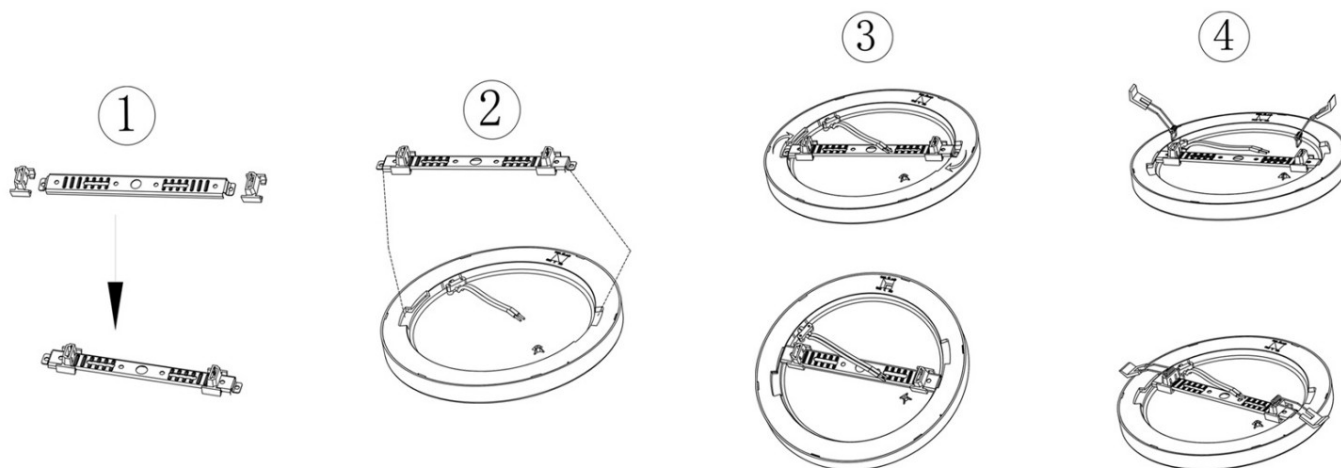
Method 1: Ceiling installation

- **Step 1:** Take out the bracket and screws, use the screws to fix the bracket on the wall
- **Step 2:** Connect the power cord according to the indication of N/L on the wire (please cut off the power first to avoid electric shock in this step)
- **Step 3:** align the lamp with the hole on the bracket, follow the direction of the arrow to rotate the lamp, until the lamp and bracket are firmly connected
- **Step 4:** After installation, turn on the power and check whether the fixture can be used normally.



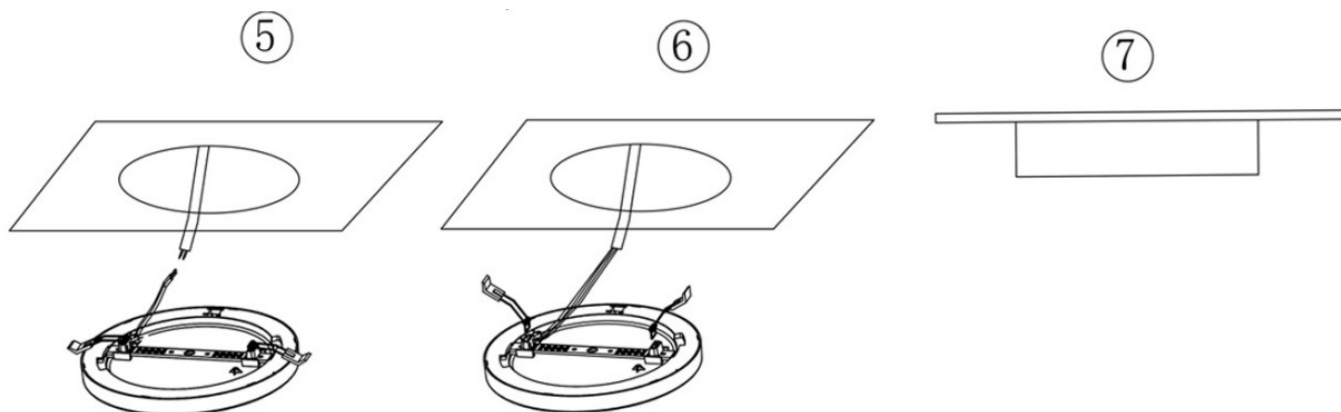
Method 2: Recessed installation

- **Step 1:** Take out the snap and bracket, fix the snap on the bracket according to the actual hole size
- **Step 2:** Align the bracket with the Installation hole on the back of the fixture, and fix the installation bracket
- **Step 3:** Rotate the mounting bracket In the direction indicated by the arrow until the bracket is fixed
- **Step 4:** Remove the two springs and insert them into the clips on



► **Step 5:** According to the instructions of N/L on the power cord, link the power cord (this step please cut off the power first, to avoid electric shock)

► **Step 6:** Embed the fixture into the reserved hole, the size of the hole can be adjusted flexibly from $\phi 50$ -200mm.



Accessory List

Plastic screws X2	Spring piece X2
Screw X2	Mounting bracket X1
Snap X2	Screwdriver X1

After Sales

- We are committed to providing customers with better products and better shopping experience.
- Each product is delivered after factory test to ensure product quality. Our products are guaranteed for 2 years.
- If you have any questions about our products, please feel free to contact us on our shop!
- Manufacturer: Shenzhen Lanbote Technology Co., Ltd.
- Add: 213, bldg. B, 1970 Cultural Innovation Park, Minzhi Community, Longhua District, Shenzhen, CN



Made in China



Electricity Safety





eVatmaster Consulting GmbH

Bettinastr. 30

60325 Frankfurt am Main, Germany

contact@evatmaster.com

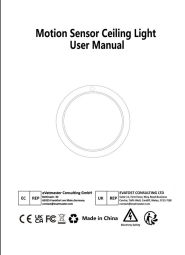


EVATOST CONSULTING LTD

Suite 11, First Floor, Moy Road Business
Centre, Taffs Well, Cardiff, Wales, CF15 7QR

contact@evatmaster.com

Documents / Resources

	<p>evatmaster B07JQD3JZ3 Motion Sensor LED Ceiling Light [pdf] User Manual B07JQD3JZ3 Motion Sensor LED Ceiling Light, B07JQD3JZ3, Motion Sensor LED Ceiling Light , Sensor LED Ceiling Light, LED Ceiling Light, Ceiling Light, Light</p>
---	--

References

- [User Manual](#)

[Manuals+.](#) [Privacy Policy](#)