



Evalogik WF31S 3 Way Wi-Fi Toggle Dimmer Switch User Manual

[Home](#) » [EVALOGIK](#) » Evalogik WF31S 3 Way Wi-Fi Toggle Dimmer Switch User Manual



3-Way Wi-Fi Toggle Dimmer Switch
WF31TS

Contents [[hide](#)]

- [1 Meet your new smart switch !](#)
- [2 Contents](#)
- [3 Installation](#)
- [4 Manual Control](#)
- [5 APP Connection](#)
- [6 Bluetooth Quick-Fit Mode](#)
- [7 Network Configuration](#)
- [8 Part 6. Parameter Settings](#)
- [9 FCC](#)
- [10 Documents / Resources](#)
 - [10.1 References](#)
- [11 Related Posts](#)

Meet your new smart switch !



Switch x1



wallplate x1



wiring x1



screws x2

Power: 120V AC, 60Hz

Wireless Frequency: 2.4GHz

Wireless Standard: IEEE802.11b/g/n

Maximum Load: 150W LED, 500 W incandescent

Minimum Load: 5W for LED bulbs

Temperature Range: 32° F~104° F

Range: Up to 100 feet line of sight For indoor use.

Contents

Convention	Description
Part 1. Installation	<ul style="list-style-type: none"> • Pre-installation preparation • Installation steps
Part 2. Wiring Diagram	<ul style="list-style-type: none"> • Wiring Instructions • single pole and 3-way wiring diagram
Part 3. Manual Control	<ul style="list-style-type: none"> • LED Indicator/ Button function • Adding / reset the device (Factory setting) • Min & Max Brightness Value Setting
Part 4. APP Connection	<ul style="list-style-type: none"> • Download the app • Add a device in your app • Work with Amazon Echo & Google Home • If you cannot configure it by the default mode successfully, try to connect by AP mode.
Part 5. Network Configuration	<ul style="list-style-type: none"> • Adding your device to Wi-Fi network
Part 6. Parameter Settings	Function description <ul style="list-style-type: none"> • LED Indicator Status Setting • Restore State after Power Failure • Light Off State Setting • Button Function Setting

For more details, please refer to the manual parts.

If you have any questions during installation, Please contact us ask@nie-tech.com

Installation

A Few Quick Reminders

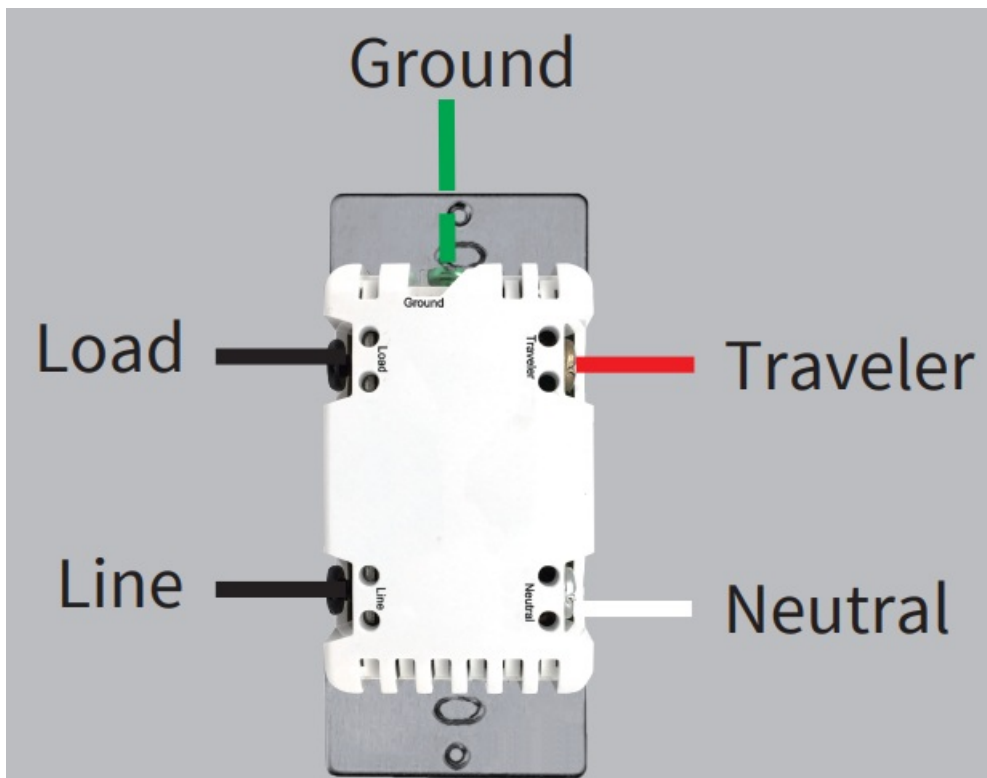
A quick note before we give out the wiring schematics. Please do not try installing this device if you are unsure of how electrical circuits operate within your home. As exciting as it is to have a smart switch installed, it can be dangerous and even life-threatening if you do not install this correctly. Please consult a qualified electrician if necessary. With that said, here are a few other warnings we'd like to point out for your safety:

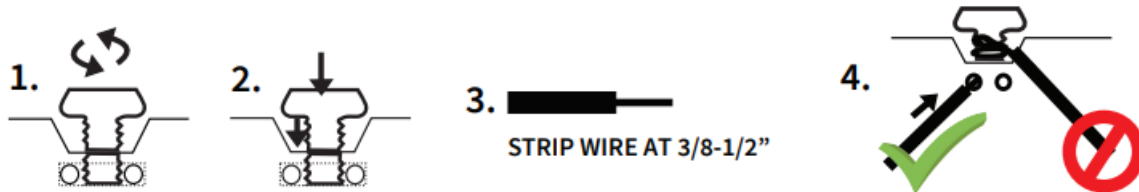


Air-Gap Switch:

Stay at right for normal use Shift to left for Bulb replacement

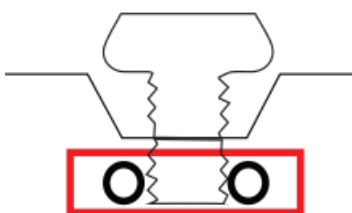
HOW TO INSTALL THE WIRES





1. Unscrew: carefully turn the screw counterclockwise to leave enough space for the wire to be inserted. Do not unscrew the screws completely.
2. Press down: Once loosened, use your finger so it catches the thread.
3. Insert the wire: make sure the wire is completely straight, then insert it into the terminal while holding down the screw. Do not wrap the wire around the screw!
4. Tighten: Turn the screw clockwise to tighten the wire. Make sure the wires are locked!

Note: There are 2 holes for each terminal can be used in the connection. You can use a jump wire or the second hole at the terminal to connect.



Note before installation

1. The Wi-Fi In-wall Smart Switch must not exceed 150W LED, 500W incandescent.
2. Work with regular 3-way on/off for 2 locations control. It can only be connected with regular 3-way on/off switch, don't use a smart switch or a dimmer switch! Couldn't work with an add-on switch!
3. The colors of your wires may not match the ones in our diagrams so please make sure you've identified all wires correctly based on their source, not color only.
4. Install the smart switch in the switch box which directly connects to the power Line and Neutral.
5. This switch requires a Neutral for installation, or the installation will not succeed.
6. Not recommended for fan.

If you have any questions, please contact us at ask@nie-tech.com

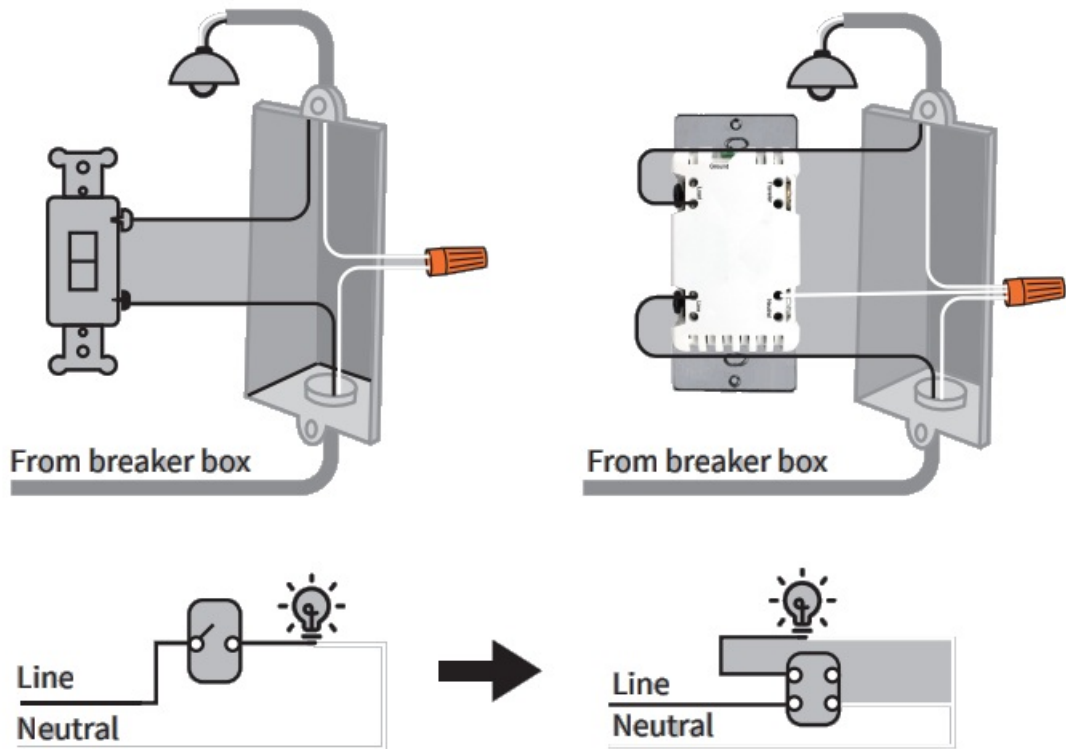
Single-pole wiring



1. Tool: Please prepare a flat head screwdriver.
2. Turn power OFF at circuit breaker or fuse box.



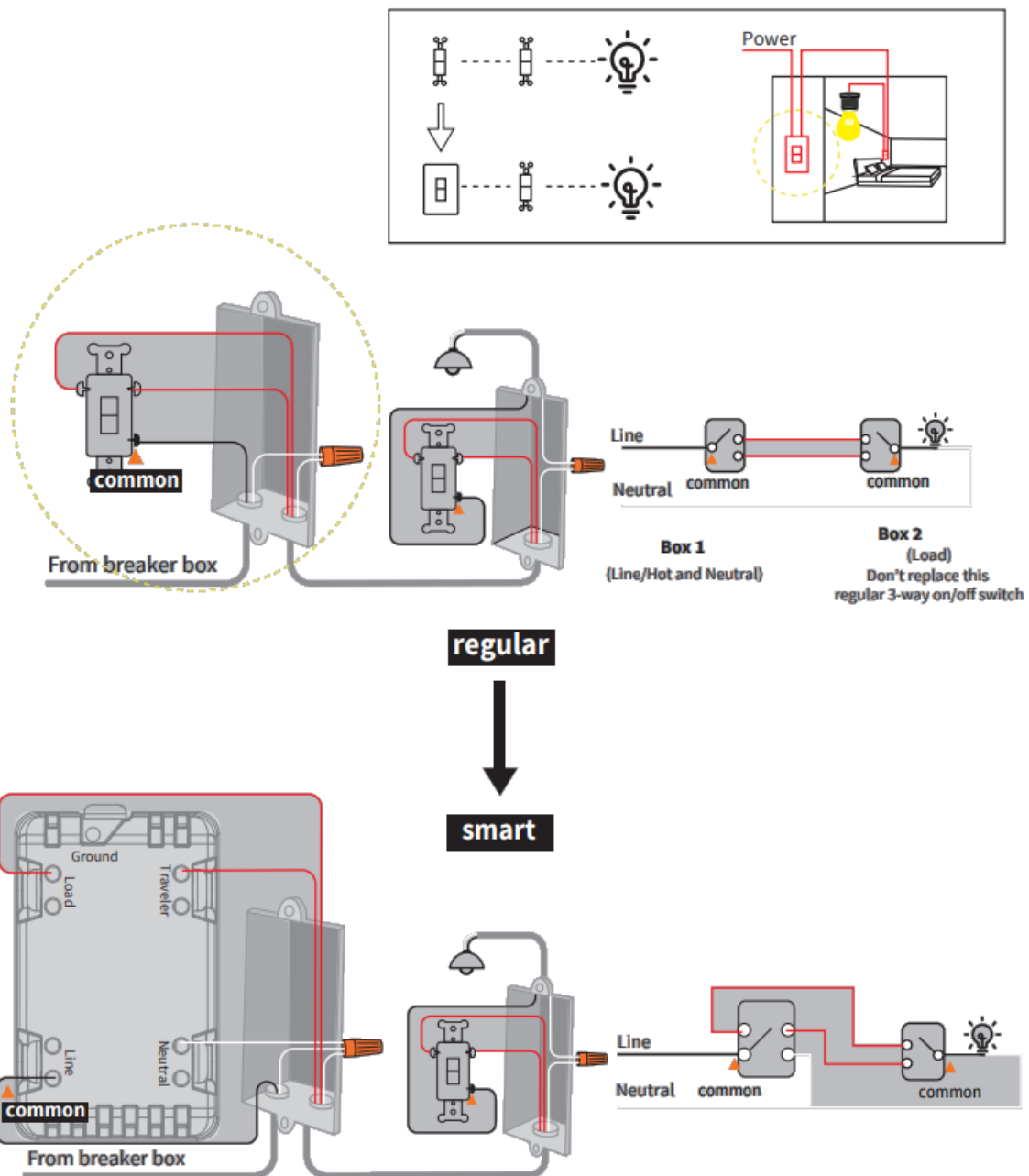
3. Remove wallplate.
4. Remove the switch mounting screws.



5. Disconnect the wires and label them after remove the old switch.(Please use our sticker) Line Load Neutral Ground Traveler (Just for 3-way switch)
6. Carefully remove the switch from the switch box. (DO NOT disconnect the wires.)
7. There are up to five screw terminals on the smart switch, these are marked (Please check <HOW TO INSTALL THE WIRES>)
8. Fix the wallplate with screws after wiring succeed. (Please use our screws.)
9. The Ground was excluded from the diagram to simplify the illustration. Please Make sure the ground wires connected to the switches respectively.

NOTE:

1. Neutral required. If the switch box do not have a Neutral, please stop! Connect the white wire to neutral terminal (use a white jump wire form the package or the second hole at the terminal to connect.)
2. Before the old switch detached, please identify the common terminal.
3. Only work with regular 3-way on/off for 2 locations control. It can only be connected with regular 3-way on/off switch, don't use a smart switch or a dimmer switch! Couldn't work with an add-on switch!



Manual Control



LED Indicator:

Red: Network failure

Blue: Network configuration mode

Orange: Light status indicator

Purple: AP Network configuration mode

1. Tap 1 (Up toggle): turn on the light (the last brightness level) Press and hold (Up button): add brightness
2. Tap 1(Down toggle) : turn off the light Press and hold ("down" toggle) : reduce brightness.
3. Adding your device to Wi-Fi network:

Please make sure the switch is on the “OFF” position.

Hold the “down” toggle more than 10s until the bulb flashes and the “blue” LED blinks rapidly to initiate App-configured Mode.

4. If you need to reset the device (Factory setting)

Network reset





1. Turn off the light(when the light is on)
2. Hold the “down” toggle until the light bulb flashes (the blue LED blinks rapidly)

APP Connection

1. Please scan the QR code to download the application “Smart Life”.
2. If you cannot download Smart Life app, please search “Smart Life” on Google Play (for Android phone) or Apple Store (for iOS phone) to download.

After you download the Smart Life App and register a new account, please follow the instructions below to set up your smart switch.

3. The smart switch can be also used with Amazon Echo and Google Home. Please scan the QR code below and follow the instructions if you have any trouble pairing with them.

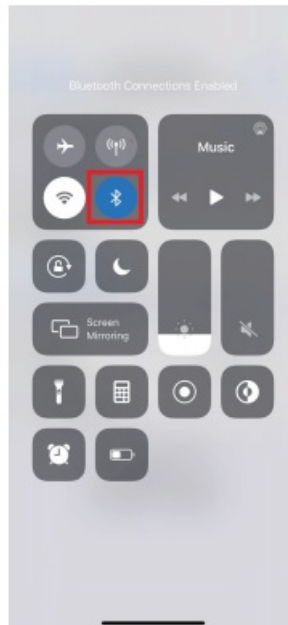
 QR code	 Smart Life	https://e.tuya.com/smartlife
 Amazon-Echo		https://nie-tech.com/wp-content/uploads/2018/12/Quick-Guide-of-Using-Amazon-Echo-To-Control-Smart-Devices-V1.02.pdf
 Google-Home		https://nie-tech.com/wp-content/uploads/2018/12/Quick-Guide-of-Using-Google-Home-to-Control-Smart-Devices.pdf

Note:

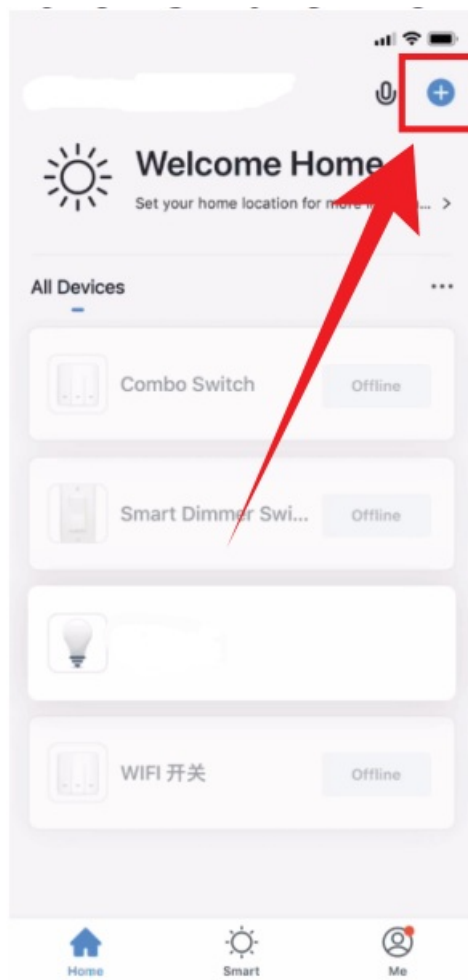
1. Our products only support 2.4GHz Wi-Fi network.
2. 3 connection network modes: Bluetooth quick-fit Mode, Easy Mode, AP Mode.
Choose the most suitable mode to configure the network.
3. Please operate quickly when blue LED indicator blinks rapidly.
4. When indicator flash enters the network, complete standard operation within 30s
5. Purple LED Flashing slowly enters AP Mode (select “AP Mode” follow the below instructions.)
6. Make sure the switch works properly by manual control before network configuration.
 - Device Reset / Network reset**step 1:** turn off the light (when the light is on)
step 2: hold the “Down” toggle until the light bulb flashes (LED blinks rapidly)

Bluetooth Quick-Fit Mode

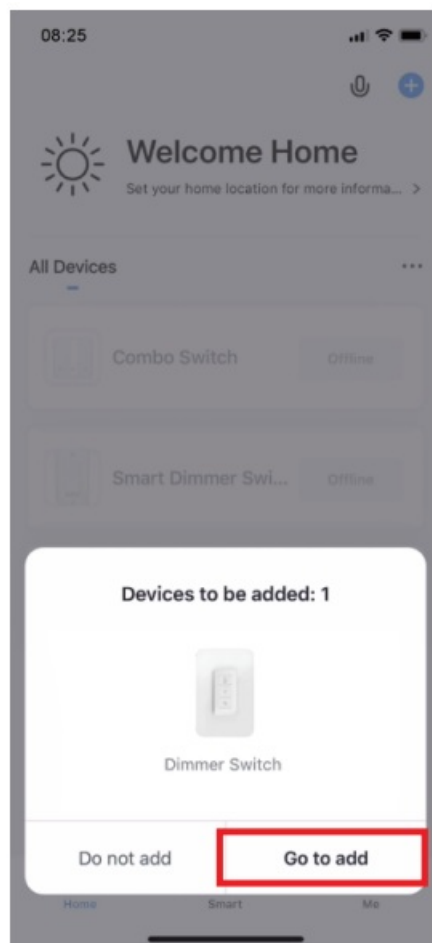
1. Turn on your Phone bluetooth.



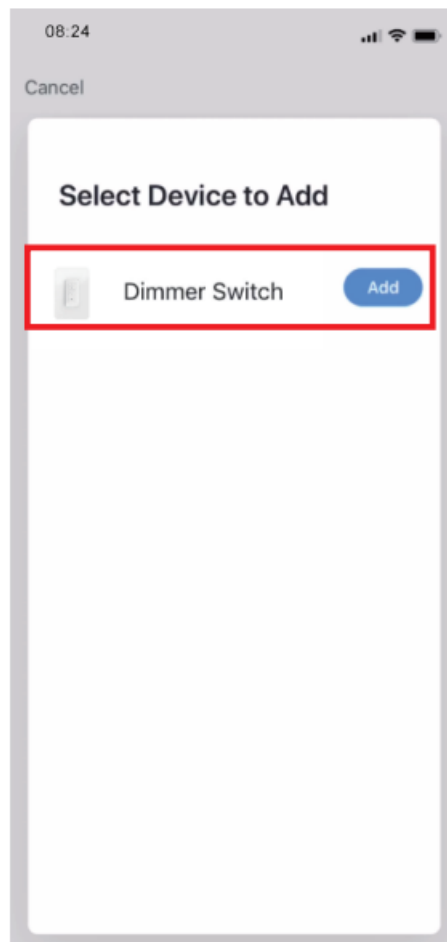
2. The auto-connection comes with blue LED indicator blinks for 3 minutes to wait for configuration. If it stopped, please Hold the “down” toggle more than 10s until the bulb flashes and the blue LED blinks again.
3. Tap ‘+’ to add this switch in the “Smart Life” APP.



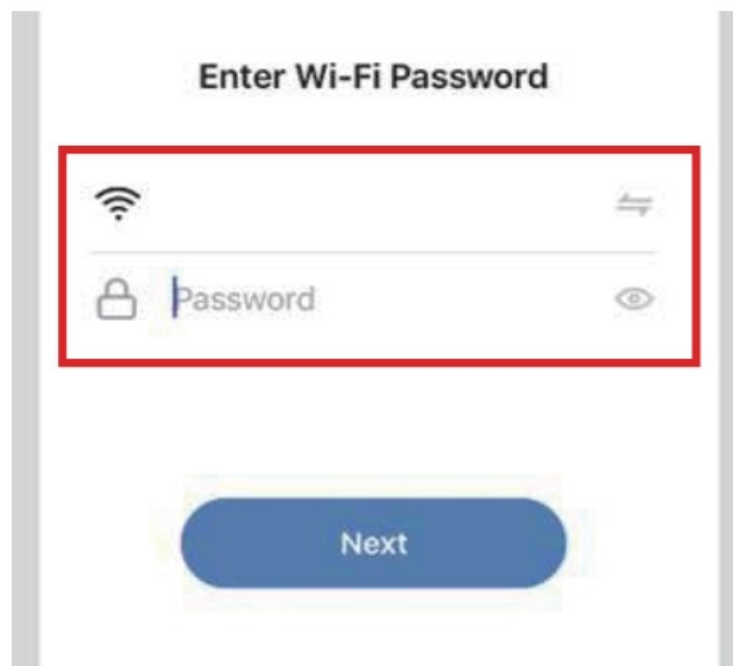
4. You'll see "Devices to be added"—"Go to add".



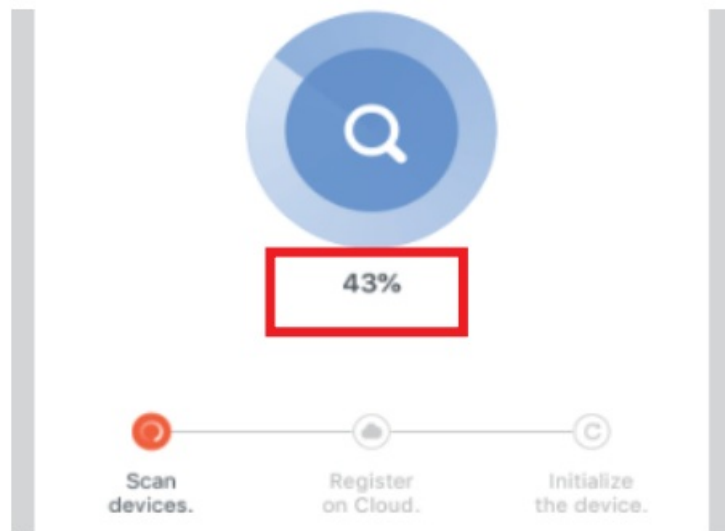
5. Click to "Add "



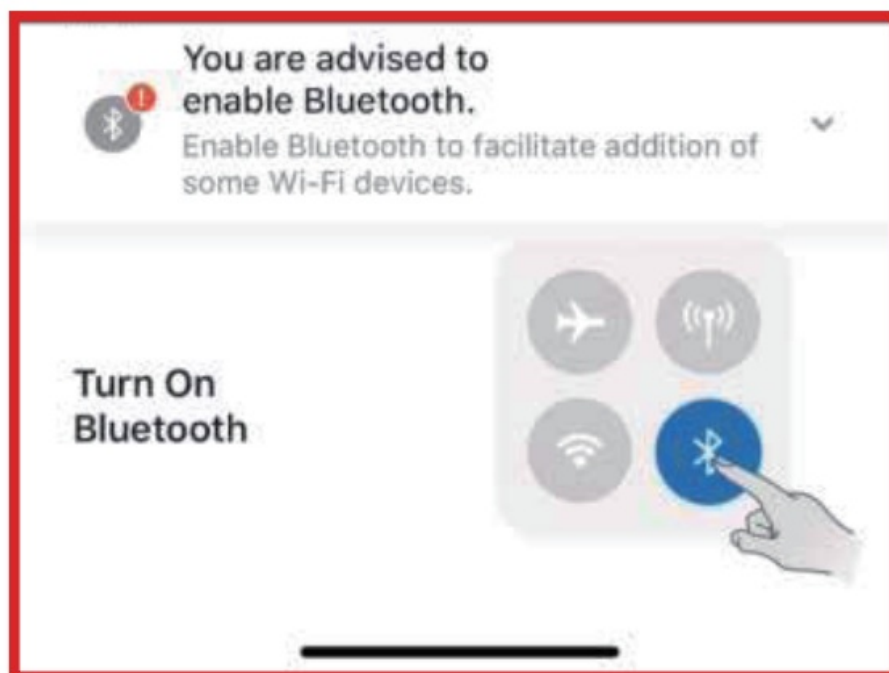
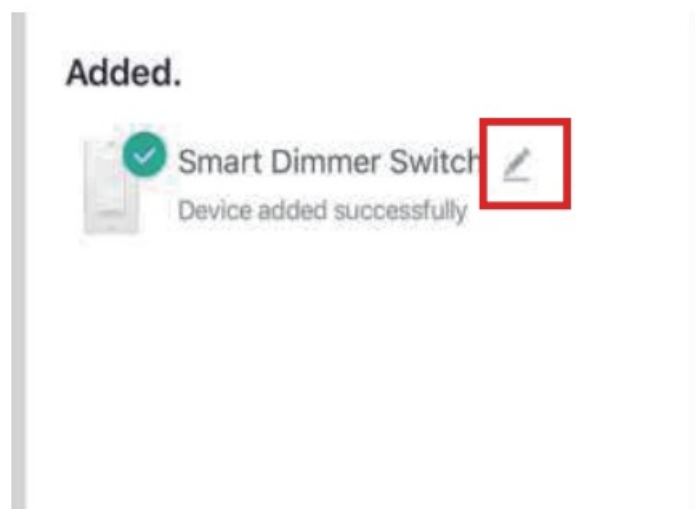
6. Enter the Wi-Fi Password (Your phone should have connected to the same Wi-Fi first).



7. Wait for it's 100% (LED stays in green 3 seconds.)



8. Edit the name of your new smart **switch!**

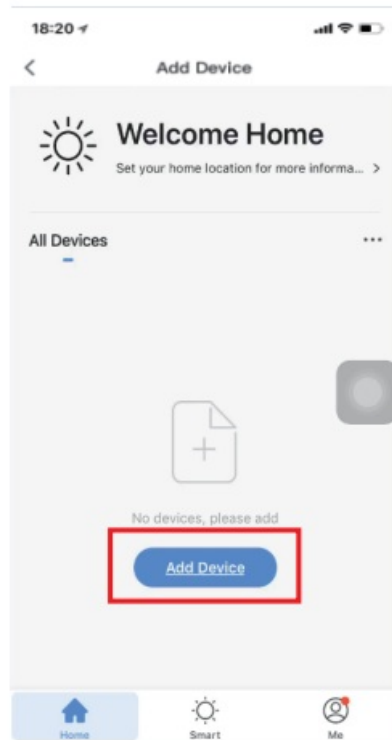


Note:

When the Bluetooth is off, APP will remind: "You are advised to enable Bluetooth".

Easy Mode

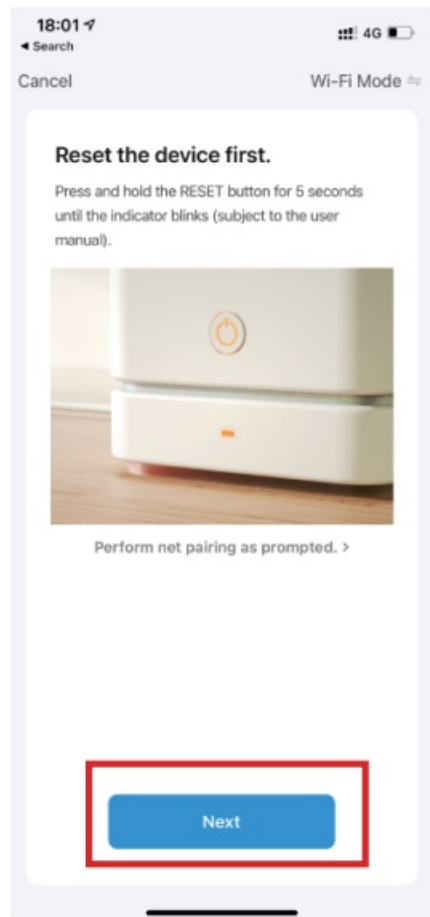
1. Tap '+' to add a device in your app



2. Select "Lighting" - "Lighting (Wi-Fi)"



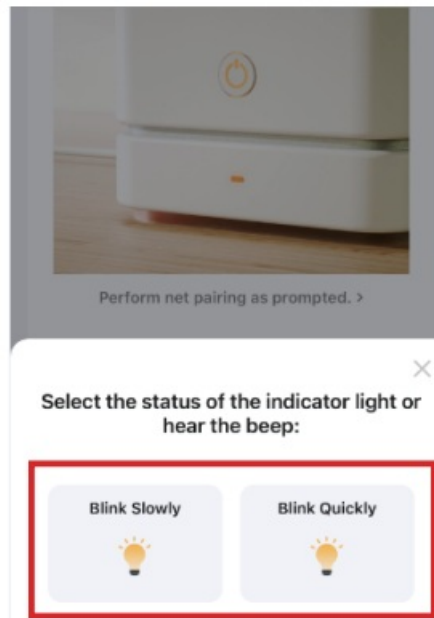
3. Enter the Wi-Fi Password



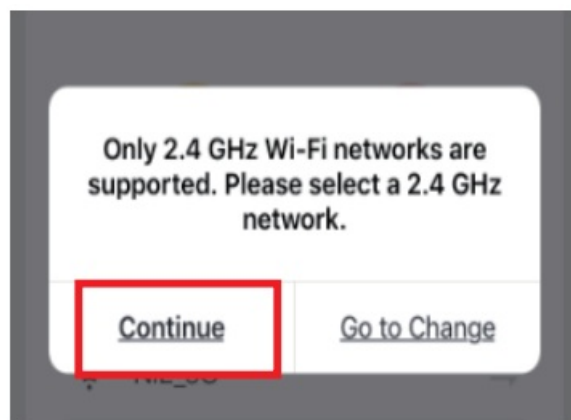
4. Hold the “down” toggle more than 10s until the bulb flashes and “BLUE” LED blinks rapidly. Please make sure the switch is on the “OFF” position.



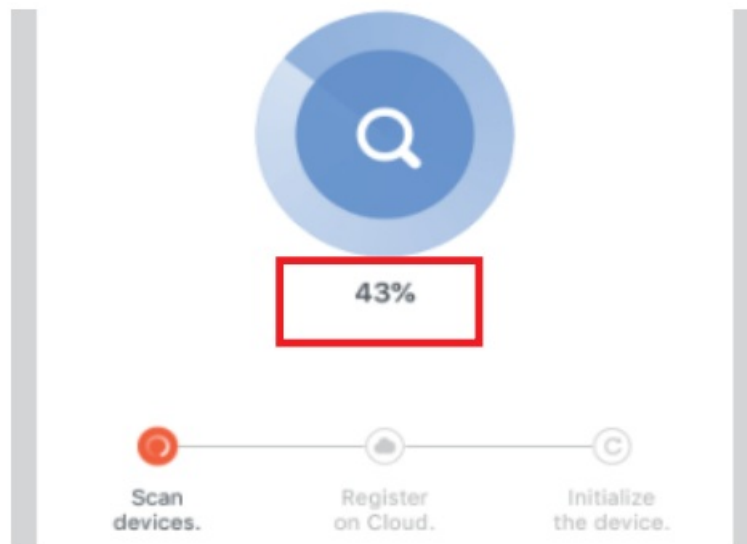
5. Select “is fast blinking(0.5s/time)”



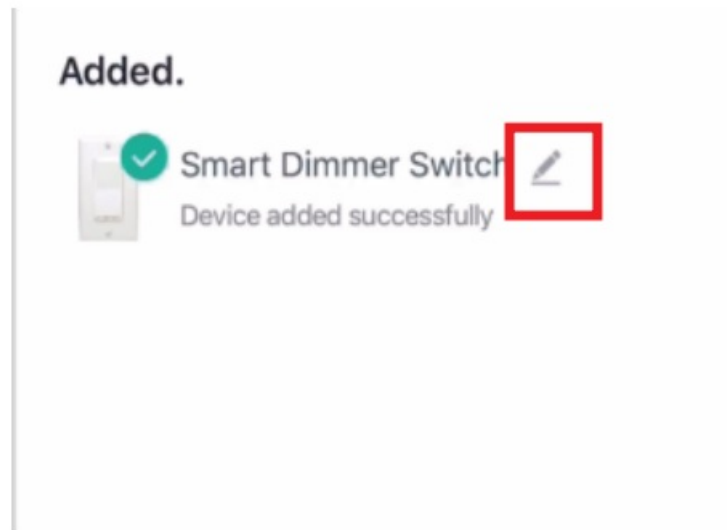
6. Click to “Continue ”



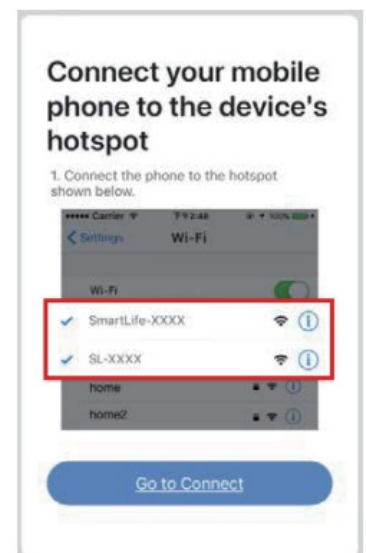
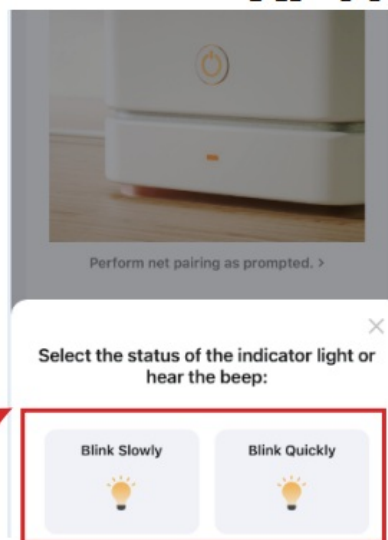
7. Wait for it's 100% (LED stays in green 3 seconds.)



8. Click and edit the name of switch!

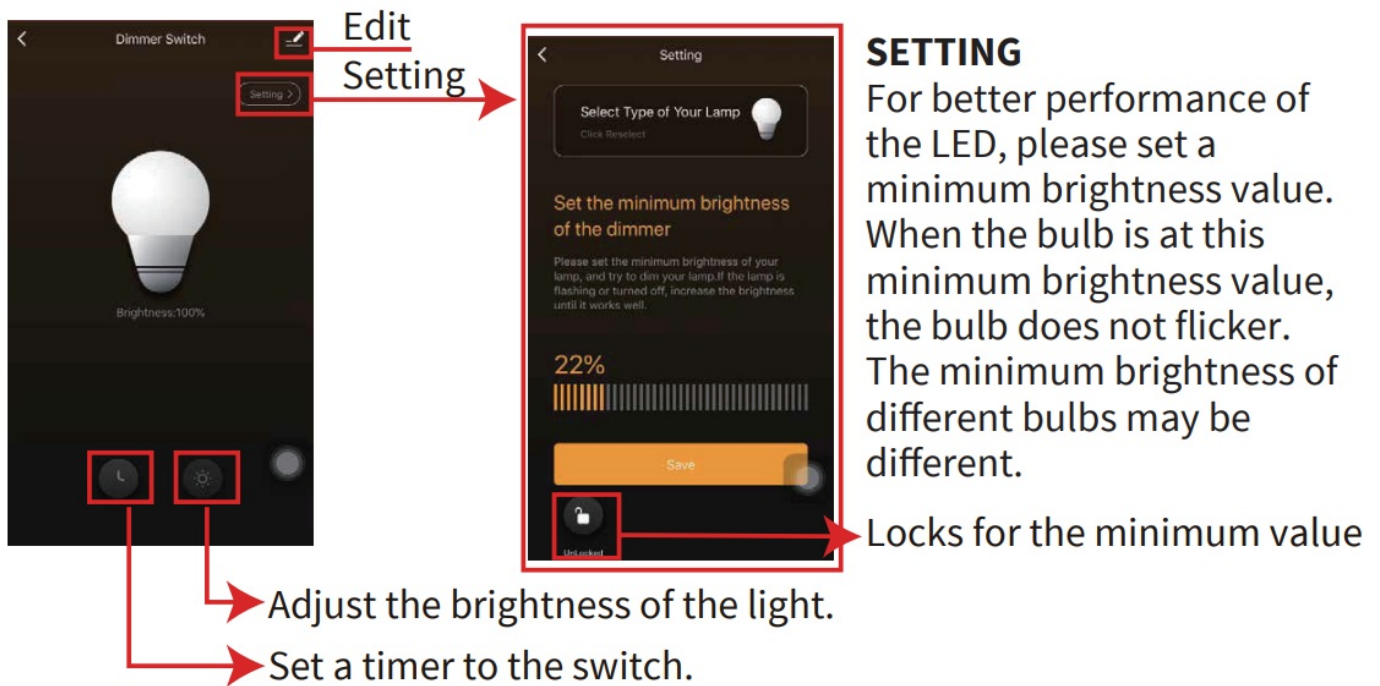


AP Mode



If you cannot successfully configure the default mode, try connecting to AP mode.

1. Click on "AP Mode" in the upper right corner.
2. When the blue LED indicator flashes quickly, press and hold the off button (default is the down button) for more than 10s until the bulb flashes twice to enter the AP mode, and the purple LED indicator flashes quickly.
3. Click "Confirm light flashes."
4. Enter Wi-Fi network password.
5. Open wireless WLAN settings with "SmartLife-xxxx".
6. Back in the application, continue adding devices and wait for the connection to complete.



Network Configuration

Hold the “down” toggle until the light bulb flashes (blue LED blinks rapidly).

Please make sure the switch is on the “OFF” position.

Guidelines for switching between AP Network configuration mode and Normal Network configuration mode:

— Normal Network configuration mode to AP Network configuration mode: When the blue LED indicator flashes quickly, press and hold the “down” toggle for more than 10s until the bulb flashes twice to enter the AP Network configuration mode, and the purple LED indicator flashes quickly.

— AP Network configuration mode to Normal Network configuration mode: When the purple LED indicator flashes quickly, press and hold the “down” toggle for more than 5s until the bulb flashes 1 time to enter normal mode, and the blue LED indicator flashes quickly.

Part 6. Parameter Settings

The Orange LED indicator flashes 3 times after each parameter setting successfully.)

LED Indicator Status Setting (This parameter can access you to choose the led indicator to be on when the switch (light) is on/off, or LED indicator remains on/off all times.)

Value=0 (default) LED is On when the switch (light) Off and LED is Off when the switch (light) On.

Value=1 LED is On when switch (light) On and LED is Off when the switch (light) Off.

Value=2 LED is always On.

Value=3 LED is always Off.

Operation: Quickly press “down” toggle 5 times.

Please note: the switching of each value is in order, a quick press “down” toggle 5 times will switch once. eg: Switching from value 0 to value 3 needs 3 switchings.

- Restores State after Power Failure (This parameter can access you to set the switch to be on/off after power failure.)

Value=0 The switch is off regardless of the state prior to power failure

Value=1 The switch is on regardless of the state prior to power failure

Value=2 (default) Memory state before power failure This switch will be return to state prior to the power failure after power is restored.

Operation: Quickly press “up” toggle 5 times.

Please note: the switching of each value is in order, a quick press “up” toggle 5 times will switch once. eg: Switching from value0 to value 2 needs 2 switchings.

- Light off State Setting (This parameter can access you to set the light fade out or off immediatly.)

Value=1 (default) Fade out

Value=2 Instantaneous off

Operation: Quickly press “up” toggle 8 times Please note: the switching of each value is in order, a quick press “up” toggle 8 times will switch once. eg: Switching from value1 to value 2 needs 1 switching.

- Button Function Setting (This parameter can access you to set the “up” button to turn the light on/off.)

Value=1 (default) The “up” toggle turn the light on and “down” toggle turn lights off.

Value=2 The “up” toggle turn the light off and “down” toggle turn lights on.

Operation: Quickly press “down” toggle 8 times

Please note: the switching of each value is in order, a quick press “down” toggle 8 times will switch once. eg: Switching from value1 to value 2 needs 1 switching.

FCC

This device complies with part 15 of the FCC and Industry Canada license-exempt RSS standard(s). Operation is subjected to the following two conditions:

1. this device may not cause harmful interference, and
2. this device must accept any interference received, including interference that may cause undesired operation.

FCC NOTE: The manufacturer is not responsible for any radio or TV interference caused by unauthorized modifications to this equipment. Such modifications could void the user’s authority to operate the equipment.

— Reorient or relocate the receiving antenna.

— Increase the separation between the equipment and receiver.

— Connect the equipment into an outlet on a circuit different from that to which the receiver is connected.

— Consult the dealer or an experienced radio/TV technician for help

NOTE: This equipment has been tested and found to comply with the limits for a Class B digital device, pursuant to Part 15 of the FCC Rules. These limits are designed to provide reasonable protection against harmful interference in a residential installation. This equipment generates, uses and can radiate radio frequency energy and, if not installed and used in accordance with the instructions may cause harmful interference to radio communications. However, there is no guarantee that interference will not occur in a particular installation. If this equipment does cause harmful interference to radio or television reception, which can be determined by turning the equipment off and on, the user is encouraged to try to correct the interference by one or more of the following measures:



CAUTION – PLEASE READ!

This device is intended for installation in accordance with the National Electric Code and local regulations in the United States, or the Canadian Electrical Code and local regulations in Canada. If you are unsure or uncomfortable about performing this installation consult a qualified electrician.

Important note: To comply with the FCC RF exposure compliance requirements, no change to the antenna or the device is permitted. Any change to the antenna or the device could result in the device exceeding the RF exposure requirements and void user’s authority to operate the device.

WARNING – SHOCK HAZARD

TURN OFF THE POWER to the circuit for the switch and lighting fixture at the service panel (circuit breaker) prior to installation.

ALL WIRING CONNECTIONS MUST BE MADE WITH THE POWER OFF to avoid personal injury and/or damage to the switch.



OTHER WARNINGS

Risk of Fire
Risk of Electrical Shock
Risk of Burns
V1.0

if you have any questions, Please contact us at
ask@nie-tech.com
www.nie-tech.com

Documents / Resources

	<p>Evalogik WF31S 3 Way Wi-Fi Toggle Dimmer Switch [pdf] User Manual WF31S 3 Way Wi-Fi Toggle Dimmer Switch, WF31S, 3 Way Wi-Fi Toggle Dimmer Switch, Toggle Dimmer Switch, Dimmer Switch, Switch</p>
---	---

References

- [Customized Wifi Smart Switch | Smart Socket | Sensor - EVA LOGIK](#)