



# EVA LOGIK WF31S 3-Way WiFi Smart Dimmer Switch User Manual

[Home](#) » [EVA LOGIK](#) » EVA LOGIK WF31S 3-Way WiFi Smart Dimmer Switch User Manual 

## Contents

- [1 EVA LOGIK WF31S 3-Way WiFi Smart Dimmer Switch](#)
- [2 Specifications](#)
- [3 SINGLE SWITCH](#)
- [4 3-WAY SWITCH OPTION 1](#)
- [5 3-WAY SWITCH OPTION 2](#)
- [6 FCC RULES](#)
- [7 Documents / Resources](#)
- [8 Related Posts](#)



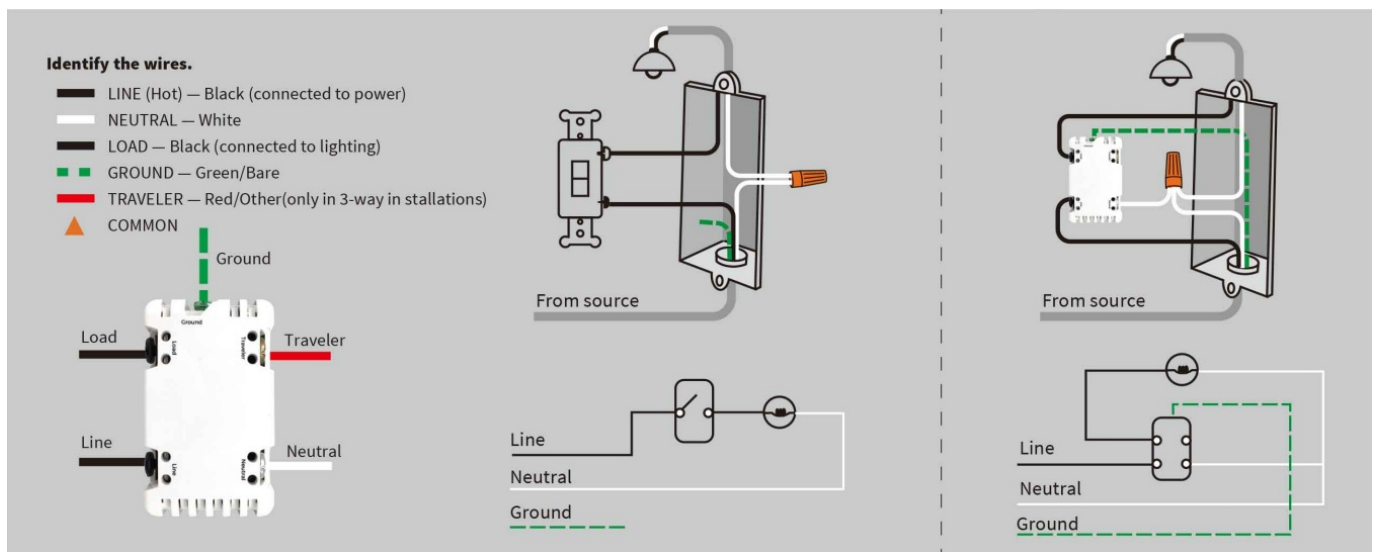
## EVA LOGIK WF31S 3-Way WiFi Smart Dimmer Switch



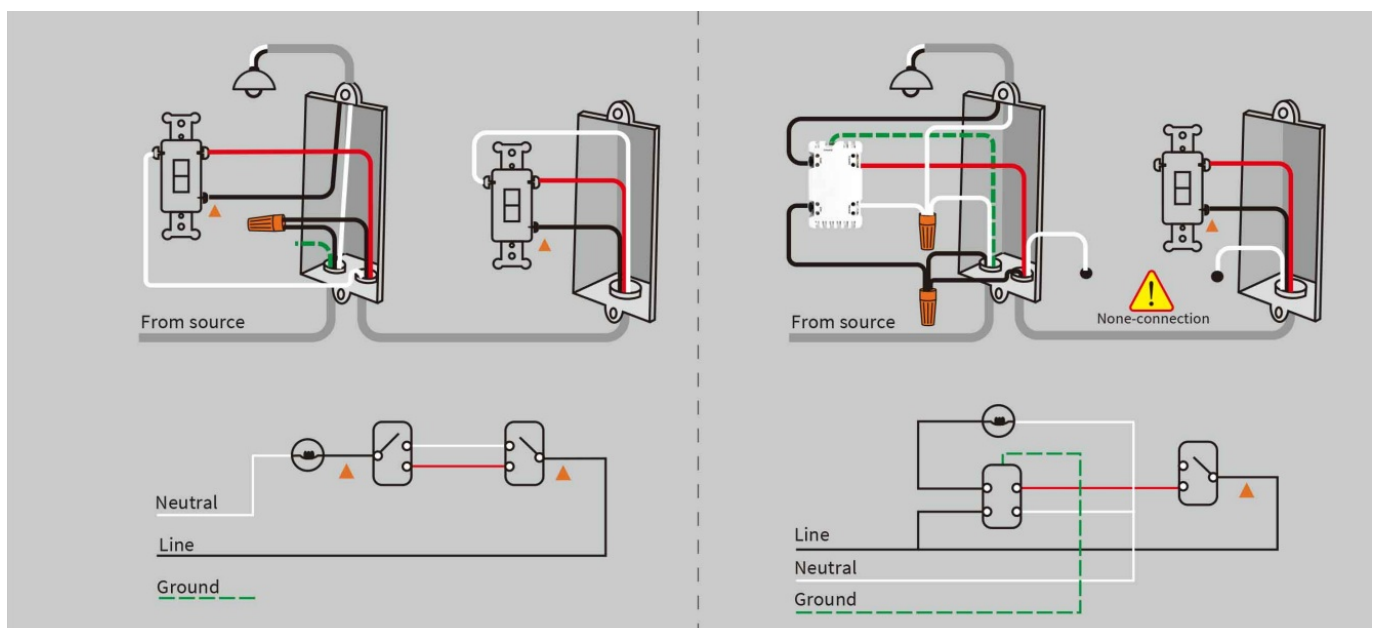
## Specifications

- Power: 120V AC, 60Hz
- Wireless Frequency: 2.4GHz
- Wireless Standard: IEEE802.11b/g/n
- FCC ID: 2AQRWF31S
- Maximum Load: 150W LED, 500W incandescent
- Minimum Load: 5W for LED bulbs
- Range: Up to 100 feet line of sight

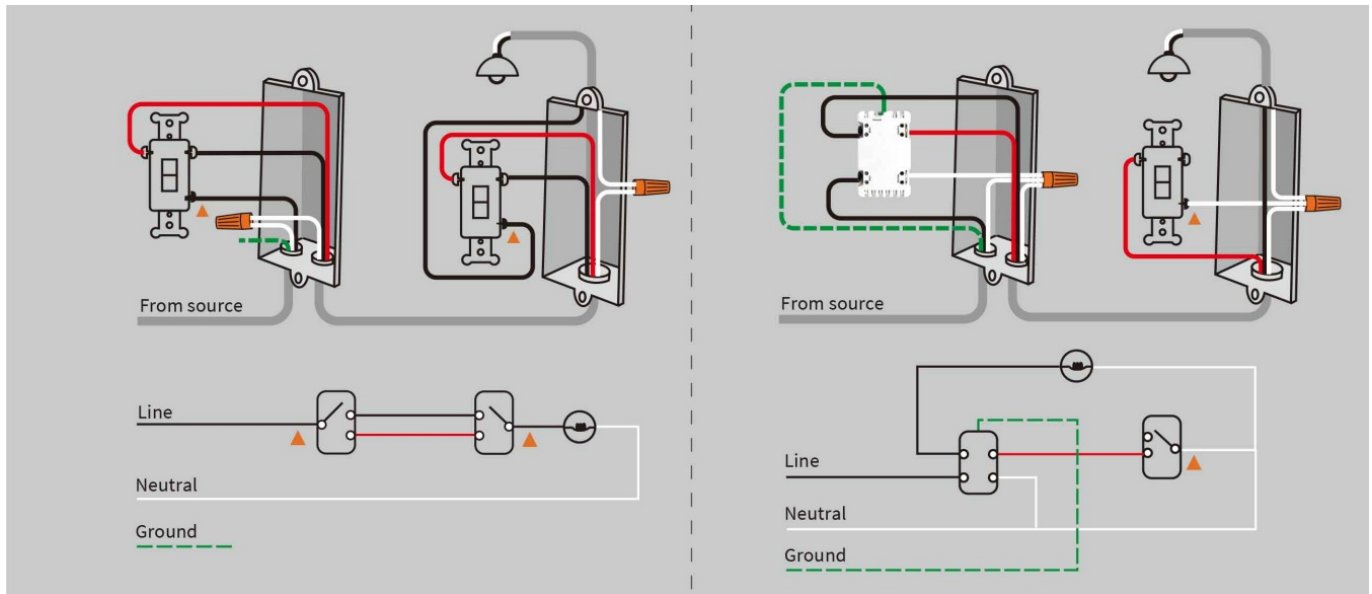
### SINGLE SWITCH



### 3-WAY SWITCH OPTION 1



## 3-WAY SWITCH OPTION 2



## FCC RULES

### FCC Caution

. This device complies with part 15 of the FCC Rules. Operation is subject to the following two conditions:

- This device may not cause harmful interference,
  - this device must accept any interference received, including interference that may cause undesired operation
- Any Changes or modifications not expressly approved by the party responsible for compliance could void the user's authority to operate the equipment.

**Note:** This equipment has been tested and found to comply with the limits for a Class B digital device, pursuant to part 15 of the FCC Rules. These limits are designed to provide reasonable protection against harmful interference in a residential installation. This equipment generates uses and can radiate radio frequency energy and, if not installed and used in accordance with the instructions, may cause harmful interference to radio communications. However, there is no guarantee that interference will not occur in a particular installation. If this equipment does cause harmful interference to radio or television reception, which can be determined by turning the equipment off and on, the user is encouraged to try to correct the interference by one or more of the following measures:

- Reorient or relocate the receiving antenna.
- Increase the separation between the equipment and receiver.
- Connect the equipment into an outlet on a circuit different from that to which the receiver is connected.
- Consult the dealer or an experienced radio/TV technician for help. \*RF warning for Mobile device

This equipment complies with FCC radiation exposure limits set for th for an uncontrolled environment. This equipment should be installed and operated with minimum distance 20cm between the radiator 8&your body.

## Documents / Resources

	<p><a href="#">EVA LOGIK WF31S 3-Way WiFi Smart Dimmer Switch</a> [pdf] User Manual WF31S, 2AQURWF31S, WF31S, 3-Way WiFi Smart Dimmer Switch</p>
--	--