



EVA LOGIK MT11N Countdown Timer Switch Instructions

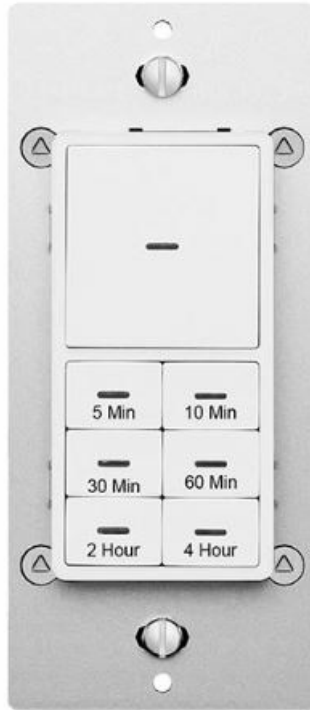
[Home](#) » [EVA LOGIK](#) » EVA LOGIK MT11N Countdown Timer Switch Instructions 

Contents

- [1 EVA LOGIK MT11N Countdown Timer Switch](#)
- [2 Product Information](#)
- [3 Product Usage Instructions](#)
- [4 How to Install the Wires](#)
- [5 Countdown Timer Switch](#)
- [6 Specifications](#)
- [7 HOW TO INSTALL THE WIRES](#)
- [8 FCC warning](#)
- [9 IMPORTANT SAFETY INSTRUCTIONS](#)
- [10 Documents / Resources](#)
 - [10.1 References](#)
- [11 Related Posts](#)



EVA LOGIK MT11N Countdown Timer Switch



Product Information

The Countdown Timer Switch Model MT11N is designed for indoor use in dry locations. It operates on a power supply of 120VAC, 60Hz and a Wi-Fi frequency of 2.4GHz. The product is FCC certified, and its ID is 2AQURNHT06A. The product is made in China.

Product Usage Instructions

How to Install the Wires

1. Strip wire at 3/8-1/2.
2. Unscrew: Carefully turn the screw counterclockwise to leave enough space for the wire to be inserted. Do not unscrew the screws completely.
3. Press down: Once loosened, use your finger so it catches the thread.
4. Insert the wire: Make sure the wire is completely straight, then insert it into the terminal while holding down the screw. Do not wrap the wire around the screw!
5. Tighten: Turn the screw clockwise to tighten the wire. Make sure the wires are locked! Note: There are 2 holes for each terminal can be used in the connection. You can use a jump wire or the second hole at the terminal to connect.

Single-Pole Wiring:

1. Tool: Please prepare a flat head screwdriver.
2. Turn power OFF at circuit breaker or fuse box.
3. Remove wallplate.
4. Remove the switch mounting screws.
5. Disconnect the wires and label them after remove the old switch. (Please use our sticker)

6. Carefully remove the switch from the switch box. (DO NOT disconnect the wires.)
7. There are up to five screw terminals on the smart switch, these are marked (Please check).
8. Fix the wallplate with screws after wiring succeed. (Please use our screws.)
9. The Ground was excluded from the diagram to simplify the illustration. Please Make sure all Line ground wires are connected to all switches respectively.

LED Indicator:

- The LED indicator is set to light up by default.
- To set the LED indicator, hold the button (5 Min) for 5 seconds.
- The LED indicator flashes for 3 seconds and then sets (be default light up).
- To adjust a higher brightness, hold the button (1 Hour) until all indicators light up, keep pressing the button to adjust a higher brightness, then release the button.
- To set Countdown Timer turn ON/OFF, hold the button (1 Min) for 5 seconds. The LED indicator flashes quickly to set the countdown timer.
- To adjust a lower brightness, hold the button (30 Min) until all indicators light up, keep pressing the button to adjust a lower brightness, then release the button.

If you have any questions, please contact us at ask@nie-tech.com and www.nie-tech.com

FCC Warning

This device complies with Part 15 of the FCC Rules. Operation is subject to the following two conditions: (1) This device may not cause harmful interference, (2) This device must accept any interference received, including interference that may cause undesired operation. Changes or modifications not expressly approved by the party responsible for compliance could void the user's authority to operate the equipment.

NOTE:

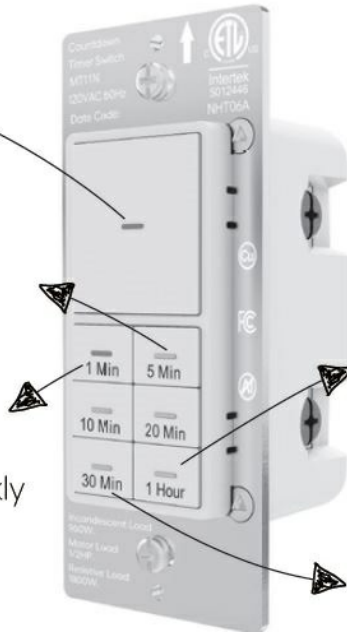
This equipment complies with FCC radiation exposure limits set forth for an uncontrolled environment. This transmitter must not be co-located or operating in conjunction with any other antenna or transmitter. This equipment should be installed and operated with a minimum distance of 20cm between the radiator and your body.

Countdown Timer Switch

LED indicator
Be default light up

Hold the button (5 Min) 5s
The LED indicator indicator
flashes 3s then setting (Be
default light up).

Hold the button (1 Min) 5s
the LED indicator flashes quickly
to set Countdown Timer turn
ON/OFF.



Hold the button (1 Hour)
until all indicators light up, keep
pressing the button to adjust a higher
brightness then release the button.

Hold the button (30 Min)
until all indicators light up, keep
pressing the button to adjust a lower
brightness then release the button.

Specifications

- Power: 120VAC, 60Hz
- Incandescent Load: 960W
- Motor Load 1/2HP
- Resistive Load 1800W
- Temperature Range: 32° F~104° F
- Time Delay: 1 Min / 5 Min / 10 Min / 20 Min / 30 Min / 1 Hour

If you have any questions, please contact us at



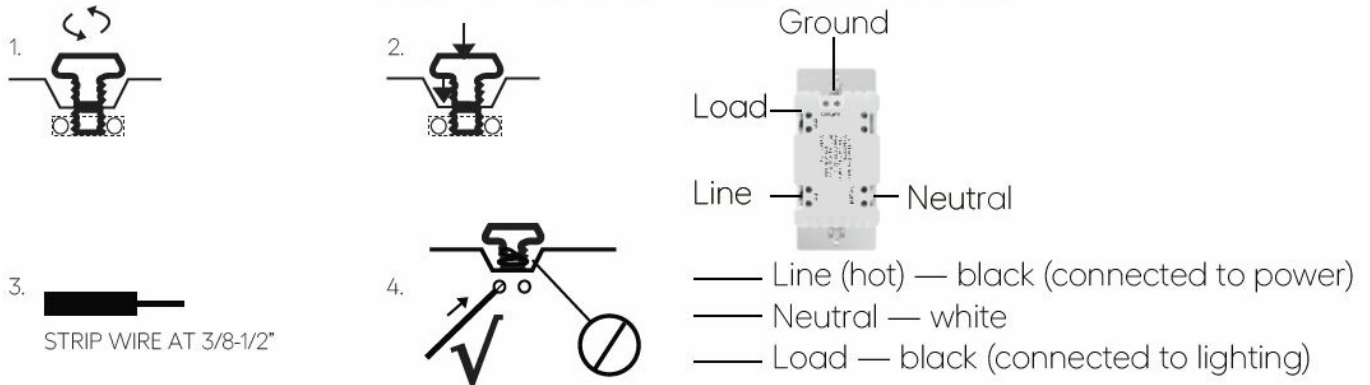
Switch x1

Wiring x1

ask@nie-tech.com and www.nie-tech.com

HOW TO INSTALL THE WIRES

HOW TO INSTALL THE WIRES



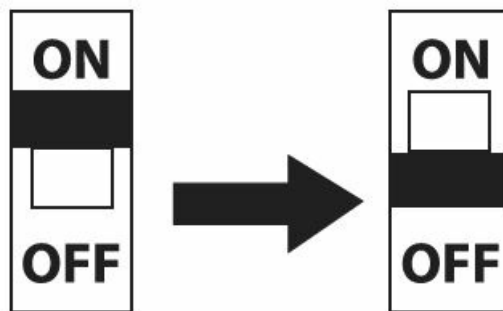
1. Unscrew: carefully turn the screw counterclockwise to leave enough space for the wire to be inserted. Do not unscrew the screws completely.
2. Press down: Once loosened, use your finger so it catches the thread.
3. Insert the wire: make sure the wire is completely straight, then insert it into the terminal while holding down the screw. Do not wrap the wire around the screw!
4. Tighten: Turn the screw clockwise to tighten the wire. Make sure the wires are locked!

Note: There are 2 holes for each terminal can be used in the connection. You can use a jump wire or the second hole at the terminal to connect.

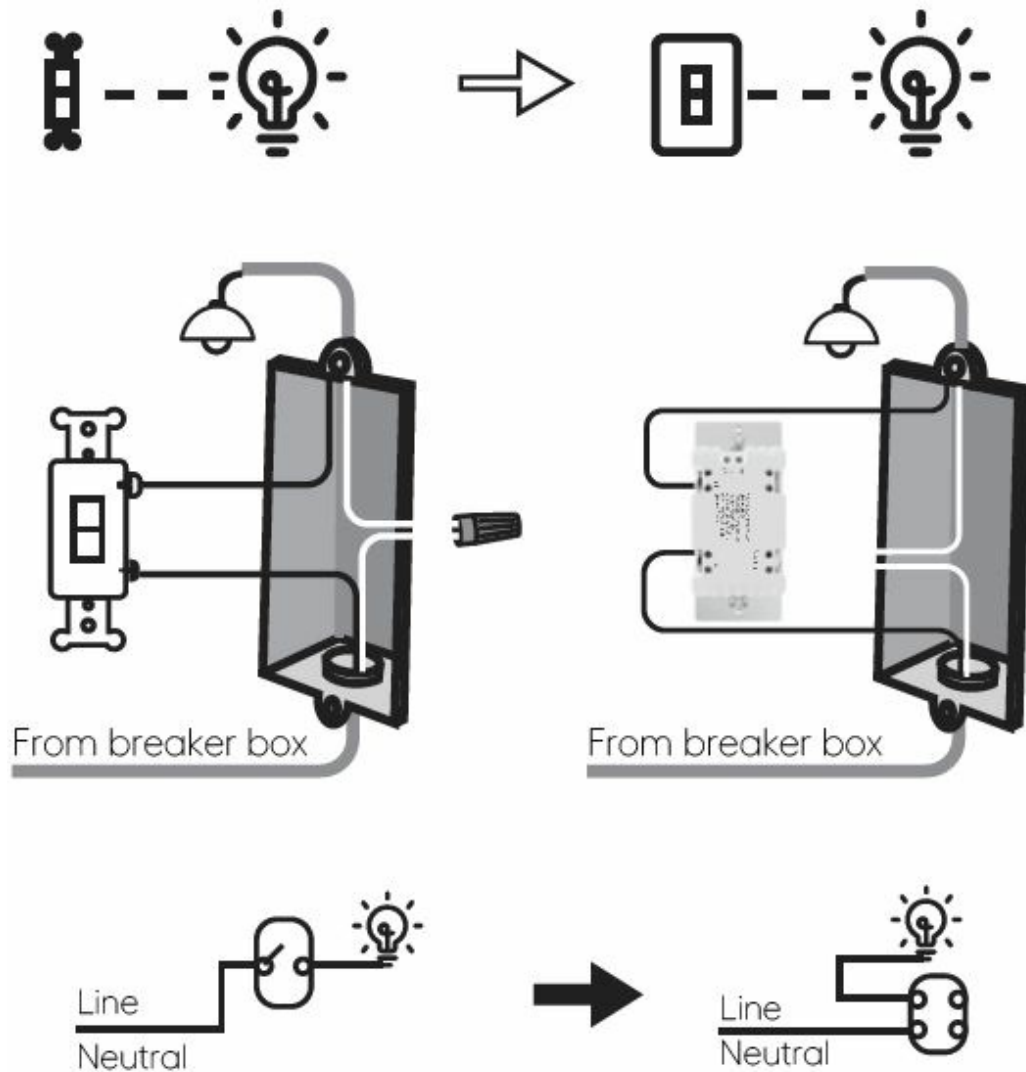


Single – pole wiring

1. Tool: Please prepare a flat head screwdriver.
2. Turn power OFF at circuit breaker or fuse box.



3. Remove wall plate.
4. Remove the switch mounting screws.
5. Disconnect the wires and label them after remove the old switch. (Please use our sticker)
6. Carefully remove the switch from the switch box. (DO NOT disconnect the wires.)
7. There are up to five screw terminals on the smart switch, these are marked (Please check <HOW TO INSTALL THE WIRES>)
8. Fix the wall plate with screws after wiring succeed. (Please use our screws.)
9. The Ground was excluded from the diagram to simplify the illustration. Please Make sure all ground wires are connected to all switches respectively.



FCC warning

1. This device complies with Part 15 of the FCC Rules. Operation is subject to the following two conditions: (1)
This device may not cause harmful interference,
2. This device must accept any interference received, including interference that may cause undesired operation.
changes or modifications not expressly approved by the party responsible for compliance could void the user's authority to operate the equipment.

NOTE:

This equipment has been tested and found to comply with the limits for a Class B digital device, pursuant to Part 15 of the FCC Rules. These limits are designed to provide reasonable protection against harmful interference in a residential installation. This equipment generates, uses and can radiate radio frequency energy and, if not installed and used in accordance with the instructions, may cause harmful interference to radio communications. However, there is no guarantee that interference will not occur in a particular installation. If this equipment does cause harmful interference to radio or television reception, which can be determined by turning the equipment off and on, the user is encouraged to try to correct the interference by one or more of the following measures:

- Reorient or relocate the receiving antenna.
- Increase the separation between the equipment and receiver.
- Connect the equipment into an outlet on a circuit different from that to which the receiver is connected.

- Consult the dealer or an experienced radio/TV technician for help.

FCC Radiation Exposure Statement:

This equipment complies with FCC radiation exposure limits set forth for an uncontrolled environment. This transmitter must not be co-located or operating in conjunction with any other antenna or transmitter. This equipment should be installed and operated with minimum distance 20cm between the radiator& your body.

CAUTION – PLEASE READ!

This device is intended for installation in accordance with the National Electric Code and local regulations in the United States, or the Canadian Electrical Code and local regulations in

Canada. If you are unsure or uncomfortable about performing this installation consult a qualified electrician.

MEDICAL EQUIPMENT

Please DO NOT use this plug to control Medical or Life Support equipment. This device should never be used to control the On/Off status of Medical and/or Life Support equipment.

OTHER WARNINGS

Risk of Fire / Risk of Electrical Shock / Risk of Burns

IMPORTANT SAFETY INSTRUCTIONS

1. READ AND FOLLOW ALL SAFETY INSTRUCTIONS.
2. Read and follow all instructions that are on the product or provided with the product.
3. do not use an extension cord.
4. Reference the National Electrical Code, NFPA 70, specifically for the installation of wiring and clearances from power and lighting conductors.
5. Installation work and electrical wiring must be done by qualified person(s) in accordance with all applicable codes and standards, including fire-rated construction.
6. do not install or use within 10 feet of a pool do not use in a bathroom

WARNING

7. Risk of Electric Shock.

When used outdoors, install only to a covered Class A GFCI protected receptacle that is weatherproof with the power unit connected to the receptacle. If one is not provided, contact a qualified electrician for proper installation. Ensure that the power unit and cord do not interfere with completely closing the receptacle cover.

8. **WARNING:**

Risk of Electric Shock. Mount the unit at a height greater than 1 foot from the ground surface

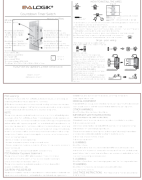
9. **WARNING:**

Risk of Electric fire. install only to a receptacle protected by 20A branch circuit over current protection.

SAVE THESE INSTRUCTIONS

This manual contains important safety and operating instructions.

Documents / Resources



[EVA LOGIK MT11N Countdown Timer Switch](#) [pdf] Instructions
MT11N Countdown Timer Switch, MT11N, Countdown Timer Switch, Timer Switch

References

- [EVA LOGIK Customized Wifi Smart Switch | Smart Socket | Sensor - EVA LOGIK](#)

[Manuals+.](#)