



Eurovik ARD822-W2 Wireless Panic Button User Guide

[Home](#) » [Eurovik](#) » Eurovik ARD822-W2 Wireless Panic Button User Guide 

Contents

- [1 Eurovik ARD822-W2 Wireless Panic Button](#)
- [2 Checklist](#)
- [3 Structure](#)
- [4 Installation](#)
- [5 Documents / Resources](#)
 - [5.1 References](#)
- [6 Related Posts](#)



Eurovik ARD822-W2 Wireless Panic Button



Checklist

- Group A: Standard.
- Group B: Optional.

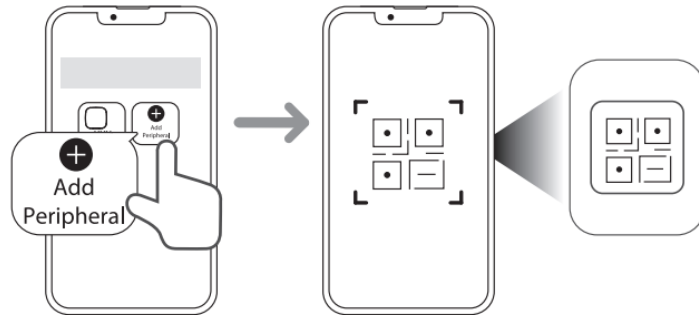
Structure

No. Name

- 1 Button
- 2 Indicator

Installation

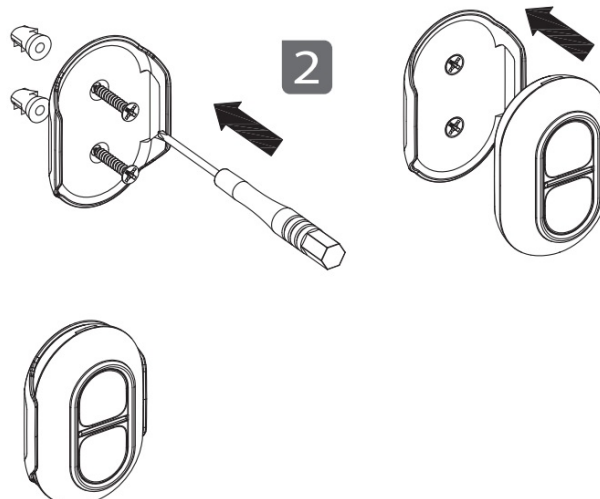
1. Add the panic button to the hub.




1. Make sure that the version of the DMSS app is 1.98 or later, and the hub is V1 .001 .0000000.7 .R.220106 or later.
 2. Make sure that you have added the hub to DMSS and Dolyнк Careapp.
 3. Scan QR code at the package to receive its user's manual for more information on the device.
2. Signal strength detection,



3. Install the panic button



Documents / Resources

| | |
|---|---|
|  | Eurovik ARD822-W2 Wireless Panic Button [pdf] User Guide ARD822-W2 Wireless Panic Button, ARD822-W2, Wireless Panic Button, Panic Button |
|---|---|

References

- [User Manual](#)

Manuals+. [Privacy Policy](#)

This website is an independent publication and is neither affiliated with nor endorsed by any of the trademark owners. The "Bluetooth®" word mark and logos are registered trademarks owned by Bluetooth SIG, Inc. The "Wi-Fi®" word mark and logos are registered trademarks owned by the Wi-Fi Alliance. Any use of these marks on this website does not imply any affiliation with or endorsement.