

eurotech LEDMODULE LED Conversion Modules Instruction Manual

[Home](#) » [eurotech](#) » eurotech LEDMODULE LED Conversion Modules Instruction Manual 

Contents

- 1 LED Conversion Modules**
 - 1.1 Model: LEDMODULE Installation Instructions**
 - 1.2 Product Information**
 - 1.3 Installation Instructions**
 - 1.4 Safety Instructions**
- 2 Documents / Resources**
 - 2.1 References**
- 3 Related Posts**

LED Conversion Modules

Model: LEDMODULE
Installation Instructions

All installations must be carried out by a qualified electrician following local regulations. Make sure that the power is switched off before installation. Please read and follow the `Installation instructions` and `Safety instructions` sections carefully before commencing installation.

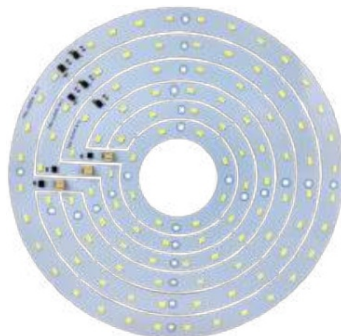
Installation of this model can change from time to time please read instructions every time before installation. For detailed specification, please go to our website eurotechlighting.co.nz

Code	Dimensions (mm)	Kelvins:	Lumens:	Watts:
LEDMODULE-S3K	Ring 1 = 185Ø	3000K	Ring 1 = 960lm, Ring 2 = 960lm (1920lm Total)	Ring 1 = 12W, Ring 2 = 12W (24W Total)
LEDMODULE-S4K	Ring 2 = 161Ø	4000K	Ring 1 = 1080lm, Ring 2 = 1080lm (2160lm Total)	
LEDMODULE-L3K	Ring 1 = 265Ø	3000K	Ring 1 = 1920lm, Ring 2 = 1440lm, Ring 3 = 960lm (4320lm Total)	Ring 1 = 24W, Ring 2 = 18W, Ring 3 = 12W (54W Total)
LEDMODULE-L4K	Ring 2 = 225Ø	4000K	Ring 1 = 2160lm, Ring 2 = 1620lm, Ring 3 = 1080lm (4860lm Total)	
	Ring 3 = 187Ø			

Product Information



Product Visual – Small



Product Visual – Large

Installation Instructions

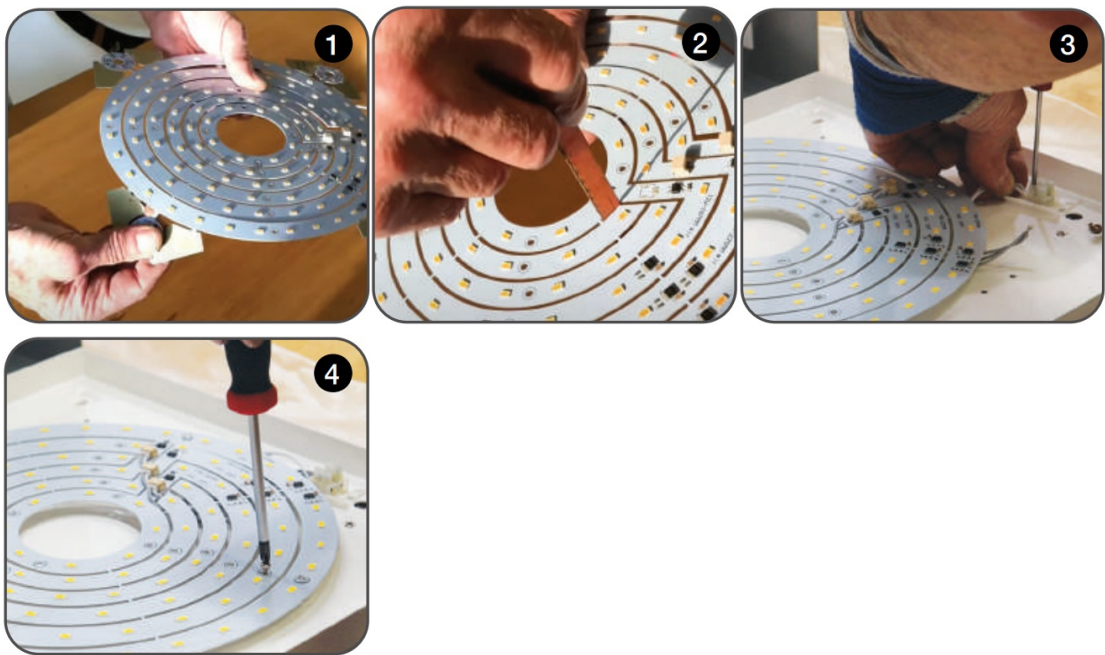
The LED modules are sold as complete modules & are complete with cable and accessories you may need. Use these modules to convert 230V Halogen, Fluorescent & Incandescent fittings to LED with a conversion module.

Use these modules as complete modules or clip-out sections for the desired light output. The Small Module can be split into two pieces and the larger module can be split into three.

They have multiple fixing points which make it easier for installation. Included in the box are four magnetic screw mounts for ease of mounting inside metal fittings made of magnetic metals, they do not work on plastic or non magnetic metals.

1. Break off corners of the module.
2. Figure out if you will use the whole module or part of the module and break it down until you have the desired module. If you want to use the whole thing then you do not need to split anything.
3. Insert cables into junction points. We recommend running the cables through the gaps in the rings towards the backplate of your fitting.
4. Screw module into place. For magnetic metal fittings, you can use magnetic clips to help secure the module into place. Ensure that your metal screws are not outside of the marked areas as this will cause the module to

short out.



Safety Instructions

Read these instructions carefully before commencing installation.


1. The light source contained in this luminaire shall only be replaced by the manufacturer or this service agent or a similar qualified person.
2. This LED luminaire must be installed by a licensed electrician ONLY following all local regulations.
3. Ensure that the cables will not be squeezed or damaged by sharp edges.
4. Clean the light with a soft cloth and a standard PH-neutral detergent.
5. Misuse of/or changes to the appliance shall void all warranties.
6. Do not install on a surface that is not suitable or deformed.
7. Do not install on or above a surface with a high temperature.
8. There should not be any materials that are corrosive, explosive.



For detailed specification, please go to our website eurotechlighting.co.nz



Documents / Resources

	eurotech LEDMODULE LED Conversion Modules [pdf] Instruction Manual LEDMODULE LED Conversion Modules, LEDMODULE, LED Conversion Modules, Conversion Modules, Modules, LED Modules
---	---

References

-  [Eurotech Lighting | Interior & Exterior Lighting NZ](#)

Manuals+.