



euromex IF4 Image Focus Plus 4 Instructions

[Home](#) » [euromex](#) » euromex IF4 Image Focus Plus 4 Instructions 

Contents

- [1 euromex IF4 Image Focus Plus 4](#)
- [2 Software installation](#)
- [3 Windows](#)
- [4 Mac](#)
- [5 How to start the camera](#)
- [6 Product Overview](#)
- [7 Documents / Resources](#)
 - [7.1 References](#)
- [8 Related Posts](#)



euromex IF4 Image Focus Plus 4



Software installation

To use the Euromex cameras, you need to install the application software, available and downloadable (at no charge) on the Euromex website (downloads). Differences in function and appearance between Windows and Mac apply.

Windows

Select and download the ImageFocus software for Windows

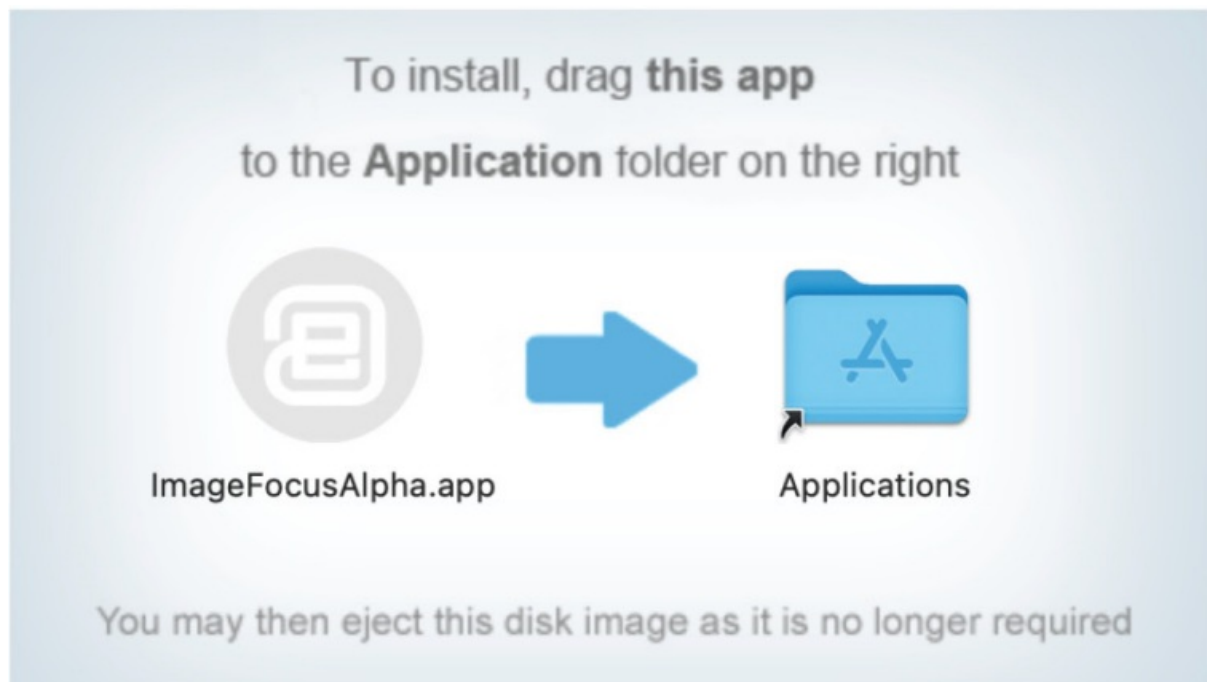
Important:

When you download the software from the Euromex website, please unpack the file to a location on your hard drive (not on the desktop!), then run the installation file.

- Right-mouse clicks and runs the file with “Run as administrator”. If running as administrator is not possible on your computer, please run the file by clicking the left mouse button.

Mac

- Select and download ImageFocus software for Mac
- Double-click on the zip file to unpack. double-click on the dmg-file
- Drag the IFA icon to your Applications folder

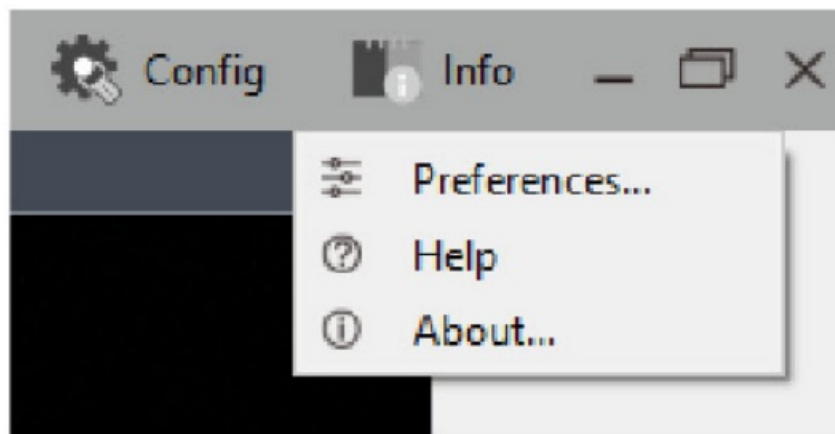


How to start the camera

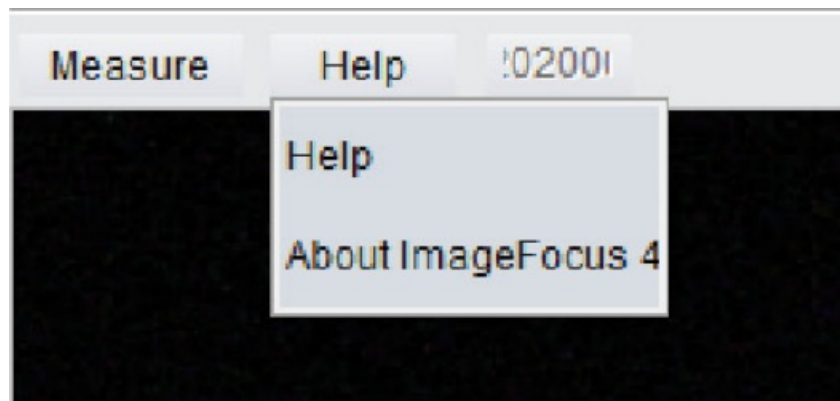
ImageFocus will detect all of the cameras that your computer has installed and will list all the camera names. Click on the camera name to run the camera

Full manual (English only) available in the software:

- ImageFocus Plus



- ImageFocus 4



Product Overview



Standard c-mount adapter for tube 23.2 mm



23.2 mm tubes



30 / 30.5 mm tubes





Model specific c-mount adapter



Brand specific c-mount adapter



Euromex Microscopen bv
Papenkamp 20 6836 BD Arnhem The Netherlands
T +31 (0) 26 323 22 11
info@euromex.com
www.euromex.com

Documents / Resources



[euromex IF4 Image Focus Plus 4](#) [pdf] Instructions

IF4, IF_, IF4 Image Focus Plus 4, IF4, Image Focus Plus 4, Focus Plus 4, Plus 4

References

- [User Manual](#)

[Manuals+](#), [Privacy Policy](#)

This website is an independent publication and is neither affiliated with nor endorsed by any of the trademark owners. The "Bluetooth®" word mark and logos are registered trademarks owned by Bluetooth SIG, Inc. The "Wi-Fi®" word mark and logos are registered trademarks owned by the Wi-Fi Alliance. Any use of these marks on this website does not imply any affiliation with or endorsement.