

EUROM

**Alutherm Wi-Fi
Smooth
Convector**



EUROM Alutherm Wi-Fi Smooth Convector Installation Guide

[Home](#) » [EUROM](#) » EUROM Alutherm Wi-Fi Smooth Convector Installation Guide 

Contents

- [1 EUROM Alutherm Wi-Fi Smooth Convector](#)
- [2 Product Information](#)
- [3 Product Usage Instructions](#)
- [4 Frequently Asked Questions](#)
- [5 Model](#)
- [6 Mandatory warnings](#)
- [7 Assembly](#)
- [8 Mounting on pedestals](#)
- [9 Wall mounting](#)
- [10 Operation](#)
- [11 Contact](#)
- [12 Documents / Resources](#)
 - [12.1 References](#)

EUROM

EUROM Alutherm Wi-Fi Smooth Convector



Product Information

Specifications:

- Models: Alutherm 1000 Wi-Fi, Alutherm 1500 Wi-Fi, Alutherm 2000 Wi-Fi, Alutherm 2500 Wi-Fi
- Product Codes (White): 360714, 360721, 360745, 360752, 360776, 360783, 360790
- Product Codes (Black): 360707, 361087, 360769, 360738, 361117
- Product Code: 365764, 365771, 365788

Product Usage Instructions

Assembly & Mounting on Pedestals:

Follow the provided instructions for assembling and mounting the heater on pedestals. Ensure proper installation for safe operation.

Operation:

Remote Control:

- Use the remote control to operate the heater efficiently.

Control Panel:

- ON/OFF Button
- LED Display
- SET Button
- WEEK Button
- Minus Button
- Plus Button

- MOD Button

LED Display:

- Indicator for Low/Medium/High Heat
- Wi-Fi Connection Status
- Program/Manual Function Indicator
- Temperature Display
- Time Display
- Day Display
- Connection to Wi-Fi Thermostat Status
- Open Window Detection Indicator

Wi-Fi Connectivity:

Instructions for Wi-Fi reset and Wi-Fi off can be found in the manual. For further details on connecting via Wi-Fi, refer to the Eurom Smart App Manual.

Disposal:

Properly dispose of the product according to the guidelines provided in the manual for environmental safety.

Frequently Asked Questions

- **Q: Where can I find the safety instructions?**
 - A: Safety instructions can be found in multiple languages on the respective links provided in the manual for NL, EN, DE, FR, SV, DA, CZ, SK, and RO.
- **Q: What should I do if the Wi-Fi connection is lost?**
 - A: Refer to the manual for instructions on resetting the Wi-Fi connection. Make sure to follow the steps carefully for re-establishing the connection.

www.eurom.nl/en/manuals

Model

Model:	Product code white:	Product code black:
Alutherm 1000 Wi-Fi	360714	360707
Alutherm 1000 Wi-Fi (Swiss plug)	360721	-
Alutherm 1500 Wi-Fi	360745	361087
Alutherm 1500 Wi-Fi (Swiss plug)	360752	-
Alutherm 2000 Wi-Fi	360776	360769
Alutherm 2000 Wi-Fi (Swiss plug)	360783	360738
Alutherm 2500 Wi-Fi	360790	361117

Wi-Fi thermostat (OPTIONAL)

Model:	Product code:
Wi-Fi thermostat	365764
Wi-Fi thermostat (Swiss plug)	365771
Wi-Fi thermostat USB-C	365788

Mandatory warnings

Please read and understand these safety instructions. Incorrect use can cause injury and will void EUROM's warranty



WARNING

- Do not use this heater in small rooms when they are occupied by persons not capable of leaving the room on their own, unless constant supervision is provided.
- To reduce the risk of fire, keep textiles, curtains, or any other flammable material a minimum distance of 1 m from the air outlet.



CAUTION

- Some parts of this product can become very hot and cause burns. Particular attention has to be given where children and vulnerable people are present.



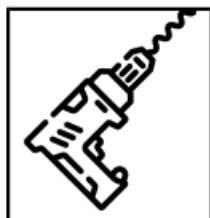
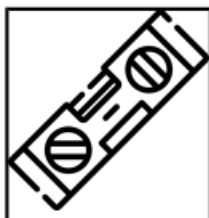
WARNING

In order to avoid overheating, do not cover the heater.

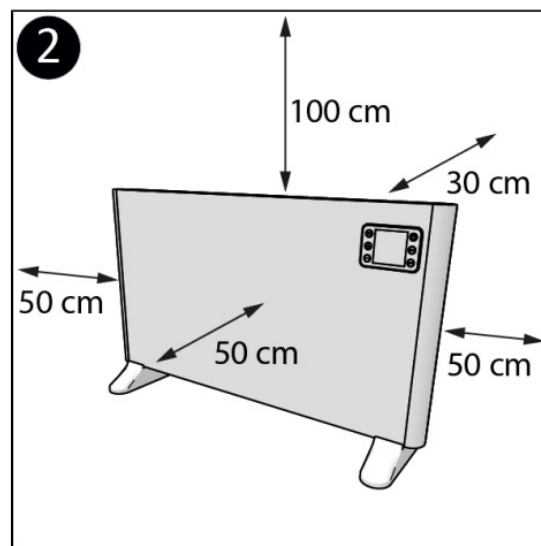
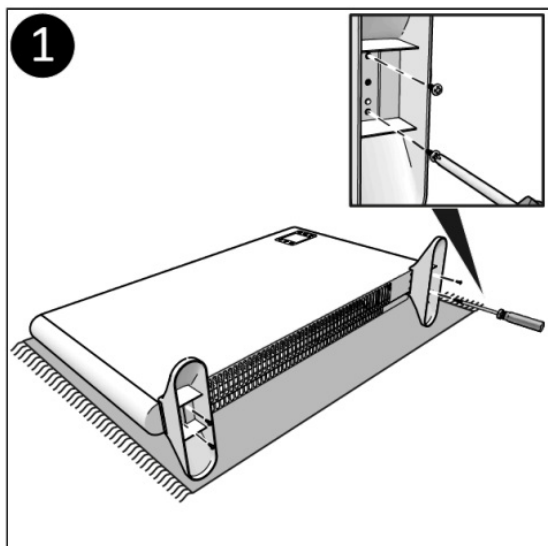
- Children of less than 3 years should be kept away unless continuously supervised.
- Children aged from 3 years and less than 8 years shall only switch on/off the appliance provided that it has been placed or installed in its intended normal operating position and they have been given supervision or instruction concerning use of the appliance in a safe way and understand the hazards involved. Children aged from 3 years and less than 8 years shall not plug in, regulate and clean the appliance or perform user maintenance.
- This appliance can be used by children aged 8 years and above and persons with reduced physical, sensory or mental capabilities or lack of experience and knowledge if they have been given supervision or instruction concerning use of the appliance in a safe way and understand the hazards involved. Children shall not play with appliances. Cleaning and user maintenance shall not be done by children without supervision.
- The heater must not be located immediately below a socket outlet.
- If the supply cord is damaged, it must be replaced by the manufacturer, its service agent or similarly qualified persons in order to avoid a hazard.
- The heater is to be installed so that switches and other controls cannot be touched by a person in the bath or shower.
- Do not use this heater in the immediate surroundings of a bath, a shower or a swimming pool.
- Do not use this heater if it has been dropped.
- Do not use if there are visible signs of damage to the heater.
- Use this heater on a horizontal and stable surface, or fix it to the wall, as applicable.

The device is equipped with an overheating protection, which switches it off automatically in case of internal overheating. Switch the device off, unplug the power plug, remove the source of overheating, let it cool down and use as normal. Do not use the device if the source of overheating cannot be traced or if the problem persists, but always contact your supplier. The device is fitted with a tipping safeguard, which ensures it automatically shuts off if it tips over. When the device is returned to its upright position, it will resume functioning normally. Before reusing the device, switch it off, unplug it and check it for damage. Do not use the device if it is damaged or malfunctioning, but always contact your supplier.

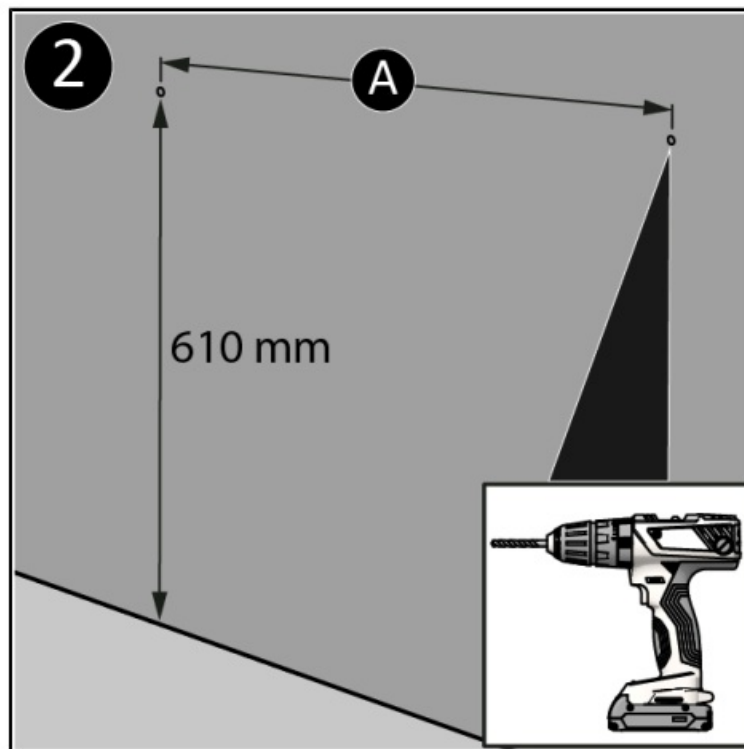
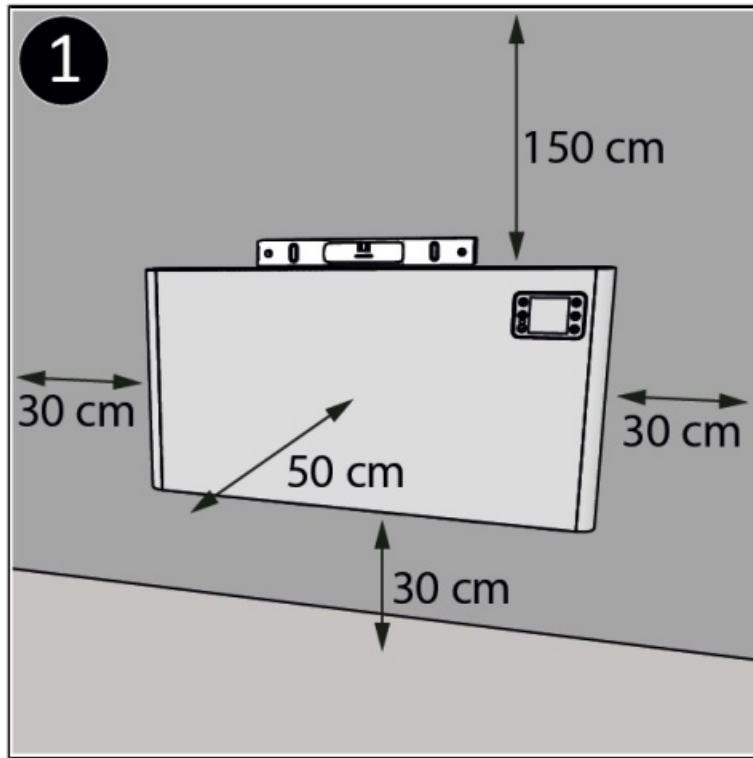
Assembly



Mounting on pedestals

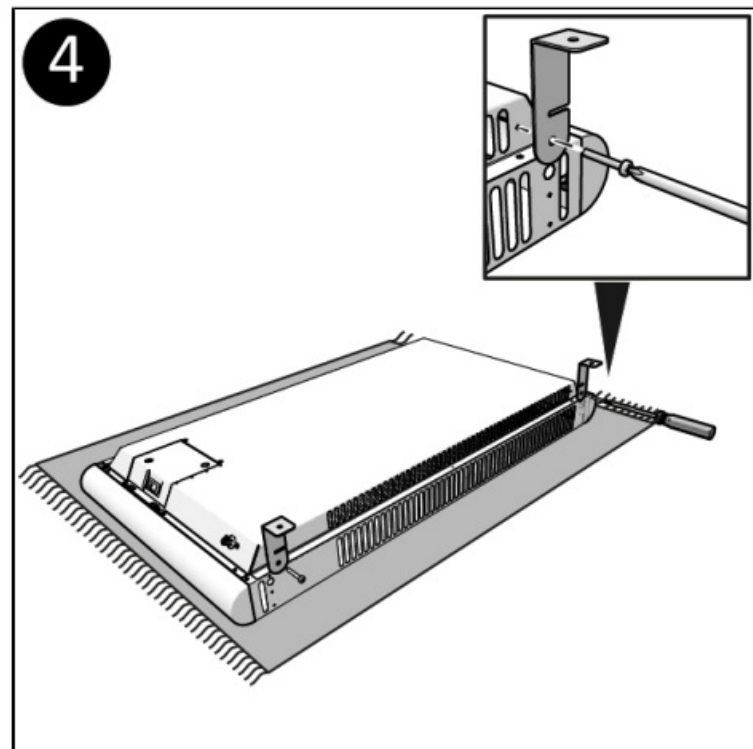
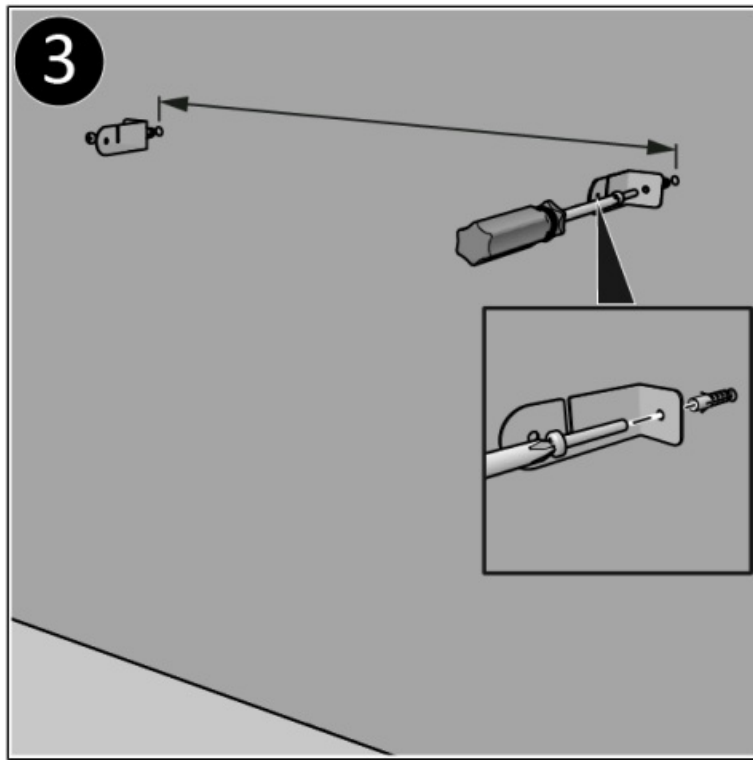


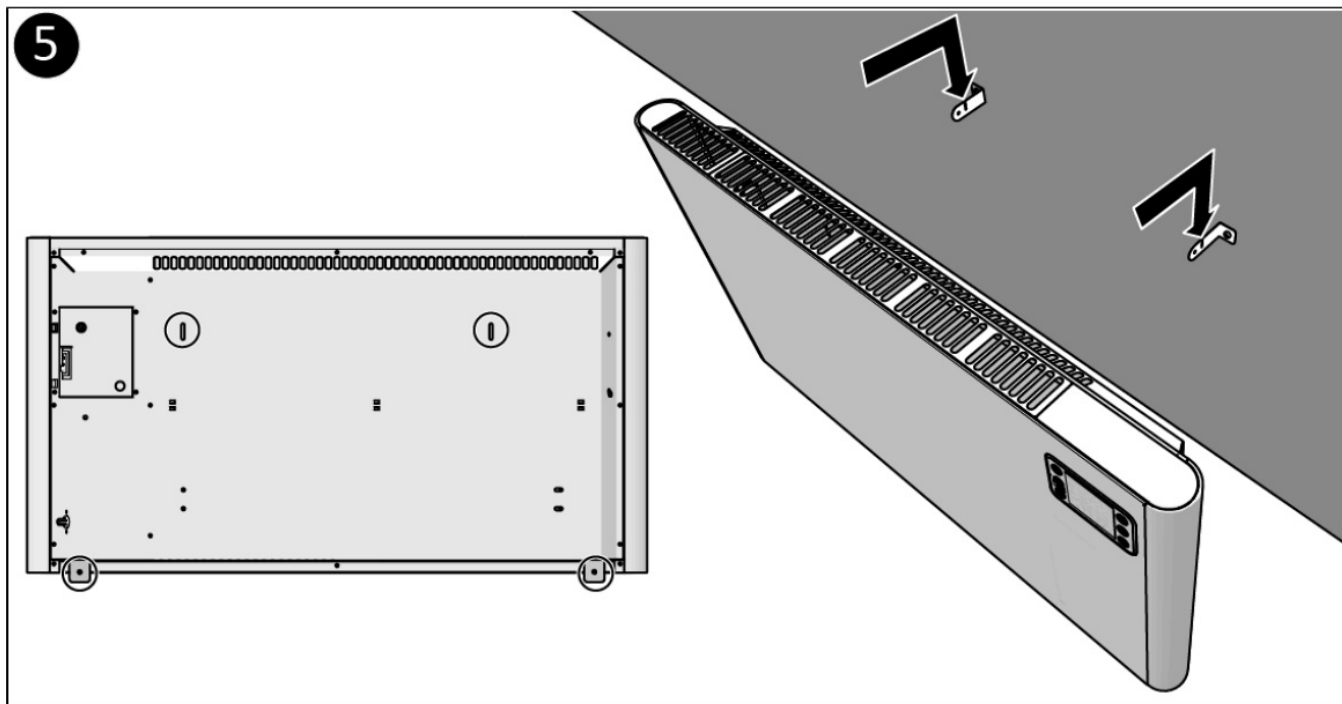
Wall mounting



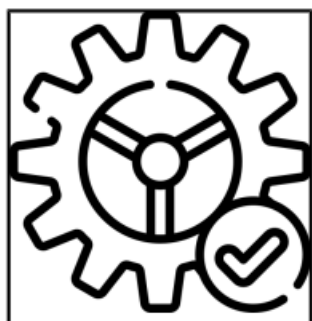
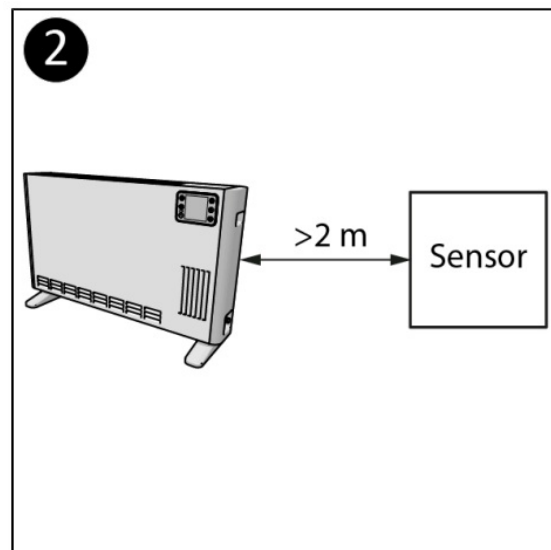
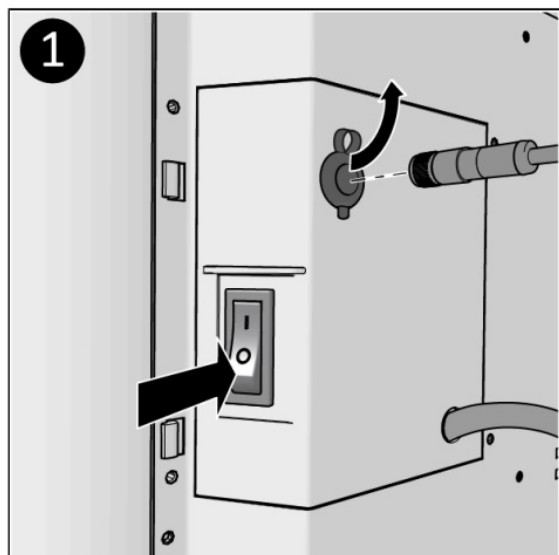
STEP 2 POS. A:

- Alutherm 1000: 255 mm;
- Alutherm 1500: 400 mm;
- Alutherm 2000: 563 mm;
- Alutherm 2500: 655 mm.



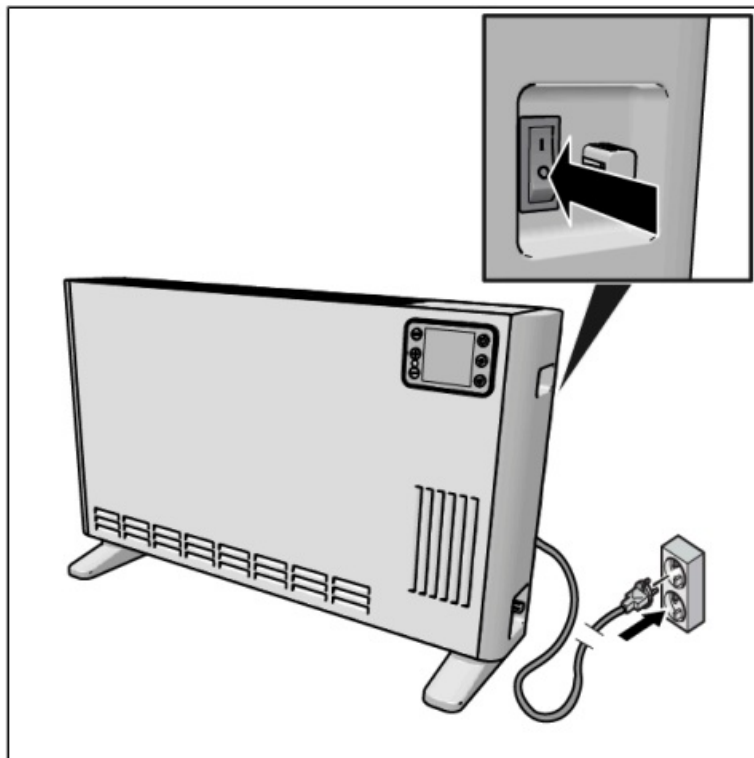


Temperature sensor (optional)

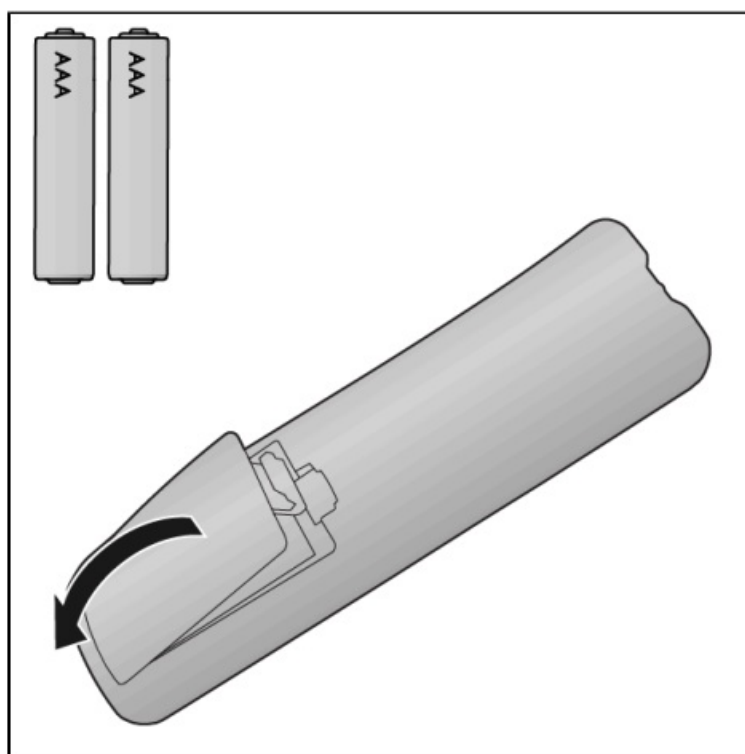


Operation

Operation



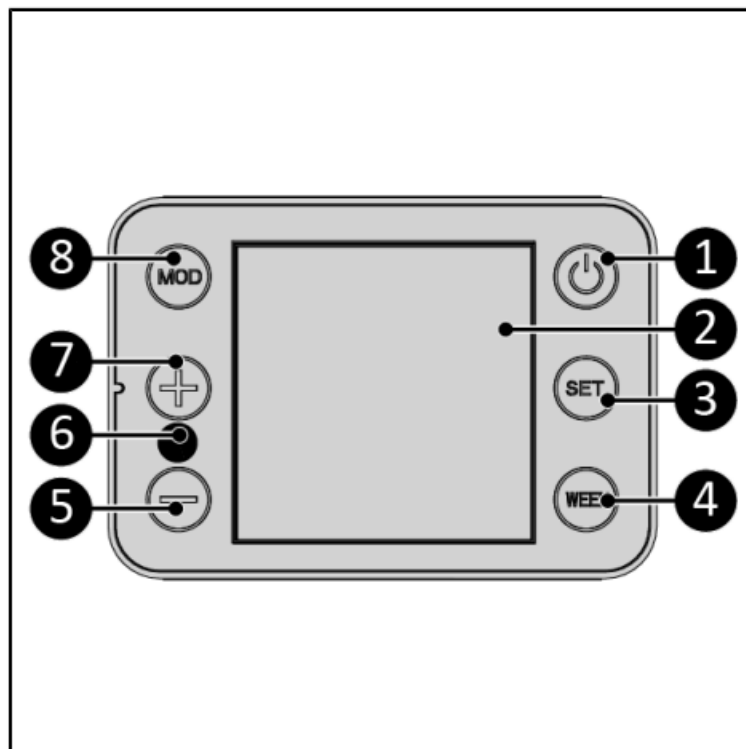
Remote control



Control panel

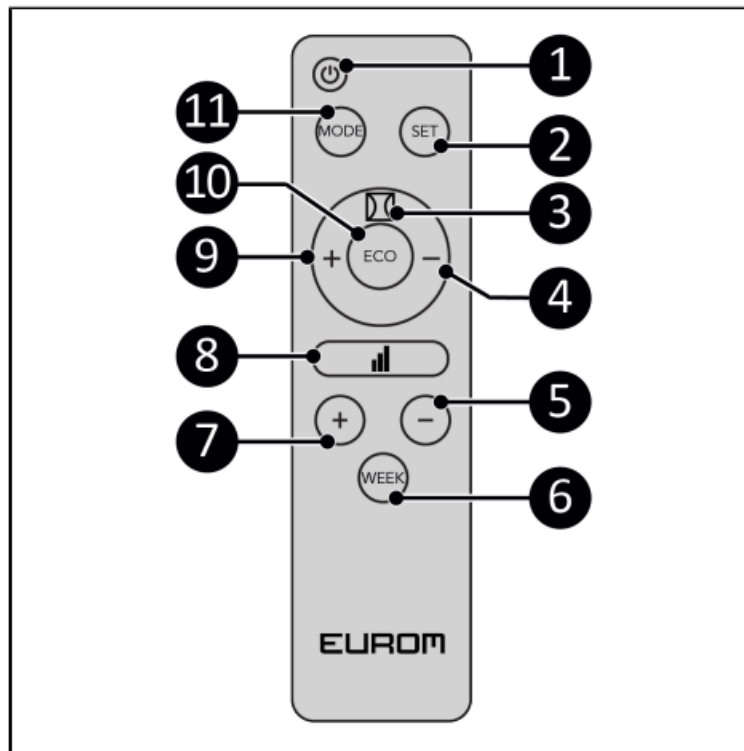
1. ON/OFF button
2. LED display
3. SET button
4. WEEK button
5. Minus button
6. Remote control receiver

7. Plus button
8. MOD button



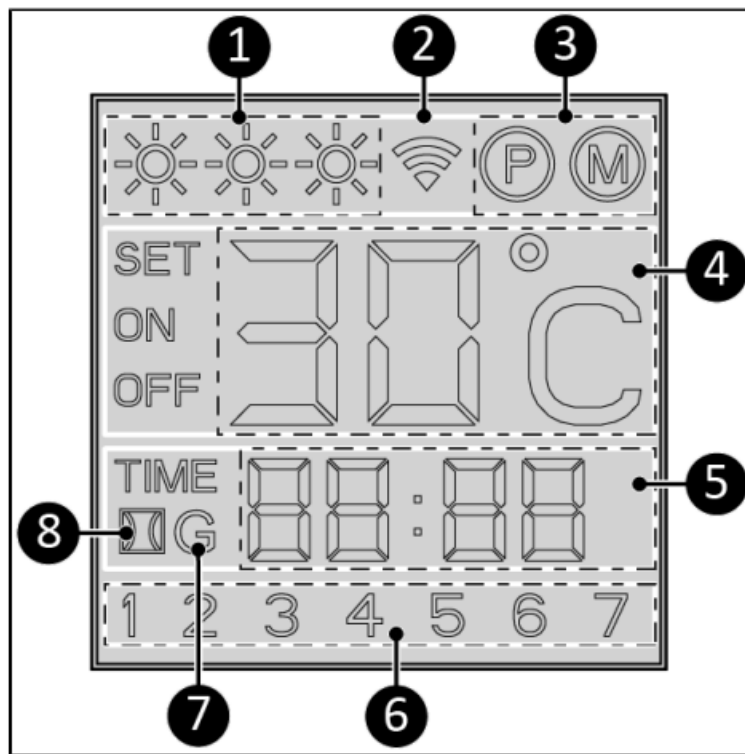
Remote control

1. ON/OFF button
2. SET button
3. Open window detection button
4. Circle minus button
5. Minus button
6. WEEK button
7. Plus button
8. Heat capacity button
9. Circle plus button
10. ECO button
11. Mode button

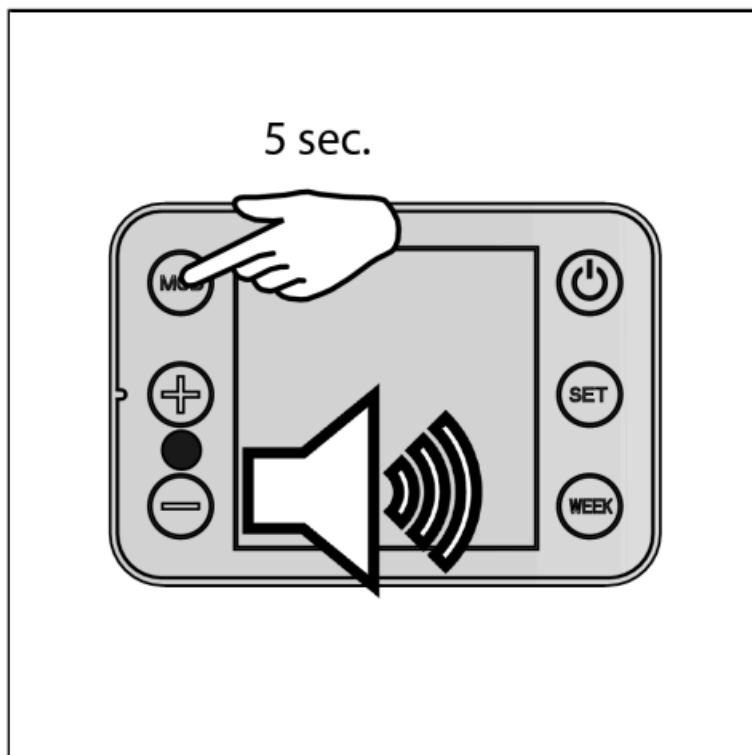


LED display

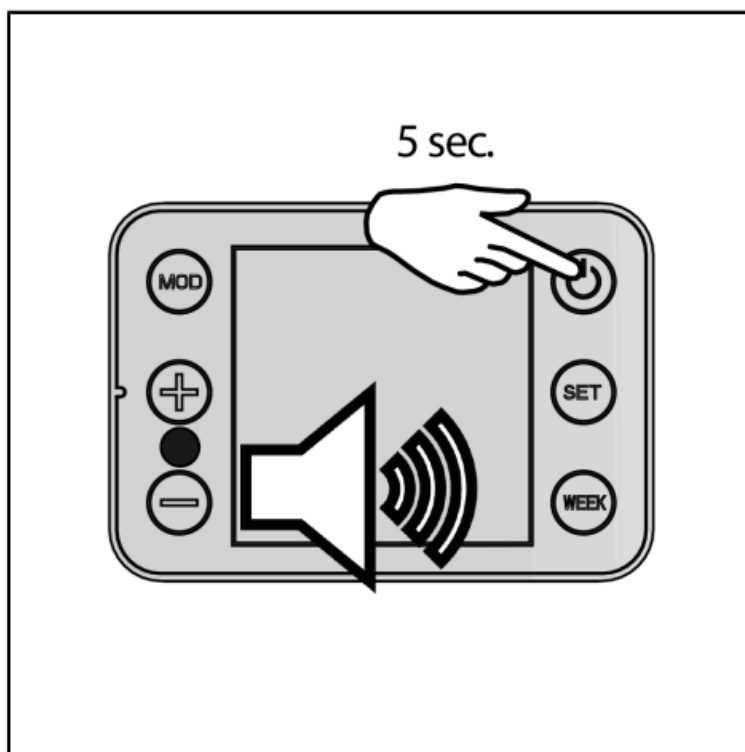
1. Low/medium/high indicator
2. Wi-Fi
3. Program/manual function
4. Temperature
5. Time
6. Day
7. Connected to Wi-Fi thermostat
8. Open window detection



Wi-Fi reset



Wi-Fi off



Eurom Smart App Manual



Disposal




This marking indicates that this product should not be disposed of with other

household waste throughout the EU. You must separate old batteries and accumulators that are not enclosed by the old device and lamps that can be removed from the old device without destroying them before handing them over to a collection point. To prevent possible harm to the environment or human health from uncontrolled waste disposal, recycle it responsibly to promote the sustainable reuse of material resources. To return your used device, please use the return and collection systems or contact the retailer where the product was purchased. They can take this product for environmentally safe recycling.

Contact

- Kokosstraat 20, 8281 JC Genemuiden, The Netherlands
- T: (+31) 038 385 43 21
- E: info@eurom.nl
- I: www.eurom.nl
- Model: Alutherm Wi-Fi
- Date: 07/08/2024
- Version: v12.0

Documents / Resources

	<p>EUROM Alutherm Wi-Fi Smooth Convector [pdf] Installation Guide 1000 Wi-Fi, 1500 Wi-Fi, 2000 Wi-Fi, 2500 Wi-Fi, Alutherm Wi-Fi Smooth Convector, Alutherm Wi-Fi, Smooth Convector, Convector</p>
--	--

References

- [User Manual](#)

[Manuals+](#), [Privacy Policy](#)

This website is an independent publication and is neither affiliated with nor endorsed by any of the trademark owners. The "Bluetooth®" word mark and logos are registered trademarks owned by Bluetooth SIG, Inc. The "Wi-Fi®" word mark and logos are registered trademarks owned by the Wi-Fi Alliance. Any use of these marks on this website does not imply any affiliation with or endorsement.