



eurolite DXT DMX Art-Net Node IV User Manual

[Home](#) » [eurolite](#) » eurolite DXT DMX Art-Net Node IV User Manual 

eurolite DXT DMX Art-Net Node IV User Manual



Contents

- [1 INTRODUCTION](#)
- [2 IMPORTANT SAFETY INSTRUCTIONS](#)
- [3 OPERATING ELEMENTS AND CONNECTIONS](#)
- [4 SETUP](#)
- [5 MENU SETTINGS](#)
- [6 WEBSITE](#)
- [7 ART-NET](#)
- [8 CLEANING AND MAINTENANCE](#)
- [9 PROTECTING THE ENVIRONMENT](#)
- [10 TECHNICAL SPECIFICATIONS](#)
- [11 Documents / Resources](#)
 - [11.1 References](#)
- [12 Related Posts](#)

INTRODUCTION

Welcome to Eurolite! Your new DXT DMX Art-Net Node IV is part of Eurolite's DXT series, which consists of high-performance and reliable DMX tools made in Germany. The Node IV features four channels that can output up to

512 DMX channels each or control up to 2048 channels. It provides four Neutrik XLR and two etherCON connectors. The second etherCON connector enables daisy chaining of the network connection with multiple devices. The device can be configured with an integrated OLED display, via Art-Net or with a website.

This user manual will show you how to install, set up and operate your new Eurolite product. Users of this product are recommended to carefully read all warnings in order to protect yourself and others from damage. Please keep this manual for future needs and pass it on to further owners.

Product features

- Art-Net node with 4 x 3-pin DMX output
- 2 etherCON network connections
- Up to 2048 DMX channel output
- OLED display with rotary encoder
- Powered via included 12V PSU
- Configuration with OLED display, website or Art-Net
- Settings:
 - IP address
 - Subnet mask
 - Art-Net ShortName
 - Art-Net LongName
 - Art-Net Net
 - Art-Net Subnet
 - Art-Net Universe
- DMX refresh rate: 40 Hz or 20 Hz
- Rack or truss installation via optional accessories

What is included

- Node IV
- Power adapter
- This user manual

Remove the product and all the accessories from the packaging. Remove all packaging material and check that all components are complete and undamaged. If you find anything missing or damaged, please contact your dealer.

IMPORTANT SAFETY INSTRUCTIONS

CAUTION!




Operating conditions This device has been designed for indoor use only. Keep this device away from rain and moisture.

DANGER!



Electric shock caused by short-circuit Be careful with your operations. With a dangerous voltage you can suffer a dangerous e

- Please read these operating instructions carefully before using the product. They contain important information for the correct use of your product. Please keep them for future reference.
- Only use the product according to the instructions given herein. Damages due to failure to follow these operating instructions will void the warranty! We do not assume any liability for any resulting damage.
- We do not assume any liability for material and personal damage caused by improper use or noncompliance with the safety instructions. In such cases, the warranty/guarantee will be null and void.
- Unauthorized rebuilds or modifications of the product are not permitted for reasons of safety and render the warranty invalid.
- Never open any part of the product to prevent a possible electric shock.
- **IMPORTANT:** This product is not an outdoor product! Only for indoor use! Do not use this device near water. The recommended temperature range is -5 to +45 °C.
- To clean the unit, disconnect it from the power source.
- Only use a soft cloth, never use any solvent.
- Do not touch the power cord and connectors with wet hands as it may cause electric shock.
- This product is not a toy. Keep it out of the reach of children and pets. Do not leave packaging material lying around carelessly.
- This unit corresponds to all required directives of the EU and is therefore marked with .

Intended use

The device is designed for distributing DMX512 control signals in lighting installations.

Overhead installation

WARNING



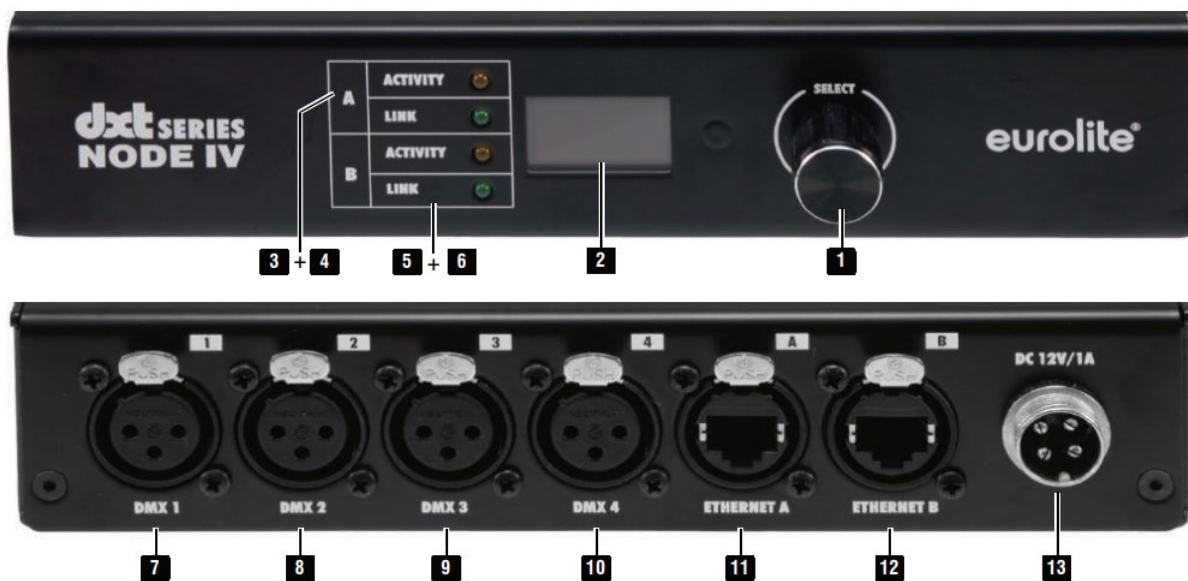
Risk of injury caused by falling objects Devices in overhead installations may cause severe injuries when crashing down. Make sure that the device is installed securely and cannot fall down. The installation must be carried out by a specialist who is familiar with the hazards and the relevant regulations.

- The device may be fastened to a truss or similar rigging structure via omega clamp. The device must never be fixed swinging freely in the room.
- Make sure that the product is set up or installed safely and expertly and prevented from falling down. Comply with the standards and rules that apply in your country.
- For commercial use the country-specific accident prevention regulations of the government safety organization for electrical facilities must be complied with at all times.
- If you lack the qualification, do not attempt the installation yourself, but instead use a professional installer. Improper installation can result in bodily injury and or damage to property.
- The manufacturer cannot be made liable for damages caused by incorrect installations or insufficient safety

precautions.

- The rigging structure must support at least 10 times the weight of all fixtures to be installed on it.
- Block access below the work area and work from a stable platform when installing the device.
- Use rigging hardware that is compatible with the structure and capable of bearing the weight of the device.
Please refer to the “Accessories” section for a list of suitable rigging hardware.
- Secure the device with a secondary attachment. This secondary safety attachment must be sufficiently dimensioned in accordance with the latest industrial safety regulations and constructed in a way that no part of the installation can fall down if the main attachment fails.
- After installation, the device requires inspections periodically to prevent the possibility of corrosion, deformation and looseness.

OPERATING ELEMENTS AND CONNECTIONS



No.	Element	Function

1	Rotary encoder	<p>Main user interface</p> <ul style="list-style-type: none"> • Click: Cursor switch or Enter • Rotation clockwise: menu switch to the right, value selection further down or value up • Rotation counter clockwise: menu switch to the left, value selection further up or value decrement
2	OLED screen	Displays device status information.
3	ACTIVITY indicator A	The orange LED shows network activity on Ethernet port A.
4	LINK indicator A	The green LED shows an established network connection on port A.
5	ACTIVITY indicator B	The orange LED shows network activity on Ethernet port B.
6	LINK indicator B	The green LED shows an established network connection on port B.

7	DMX 1	DMX512 port 1: Connect your fixture with 3-pin XLR.
8	DMX 2	DMX512 port 2: Connect your fixture with 3-pin XLR.
9	DMX 3	DMX512 port 3: Connect your fixture with 3-pin XLR.
10	DMX 4	DMX512 port 4: Connect your fixture with 3-pin XLR.
11	ETHERNET A	100Base-TX Ethernet connection.
12	ETHERNET B	100Base-TX Ethernet connection.
13	Power input	To plug in the power plug of the supplied PSU. Fasten it with the swivel nut.

SETUP

Installation

Setup the device on a plane surface or fasten it to a truss or similar rigging structure using the optional holder (item no. 51786552). Observe sufficient load-bearing capacity and connect an appropriate safety feature in case of overhead installation.

Caution! Observe all safety instructions on page 15.

Rack installation

The device can be mounted in a 19" rack with the optional mounting blade (item no. 70064874). Use four screws to fasten the mounting blade to the top and bottom of the housing.

Connection to the power supply

Connect the power adapter provided to the corresponding input on the node and to a mains socket. Thus the device is powered on. To switch off the device and after the operation, disconnect the mains plug of the power adapter from the socket, to prevent unnecessary power consumption.

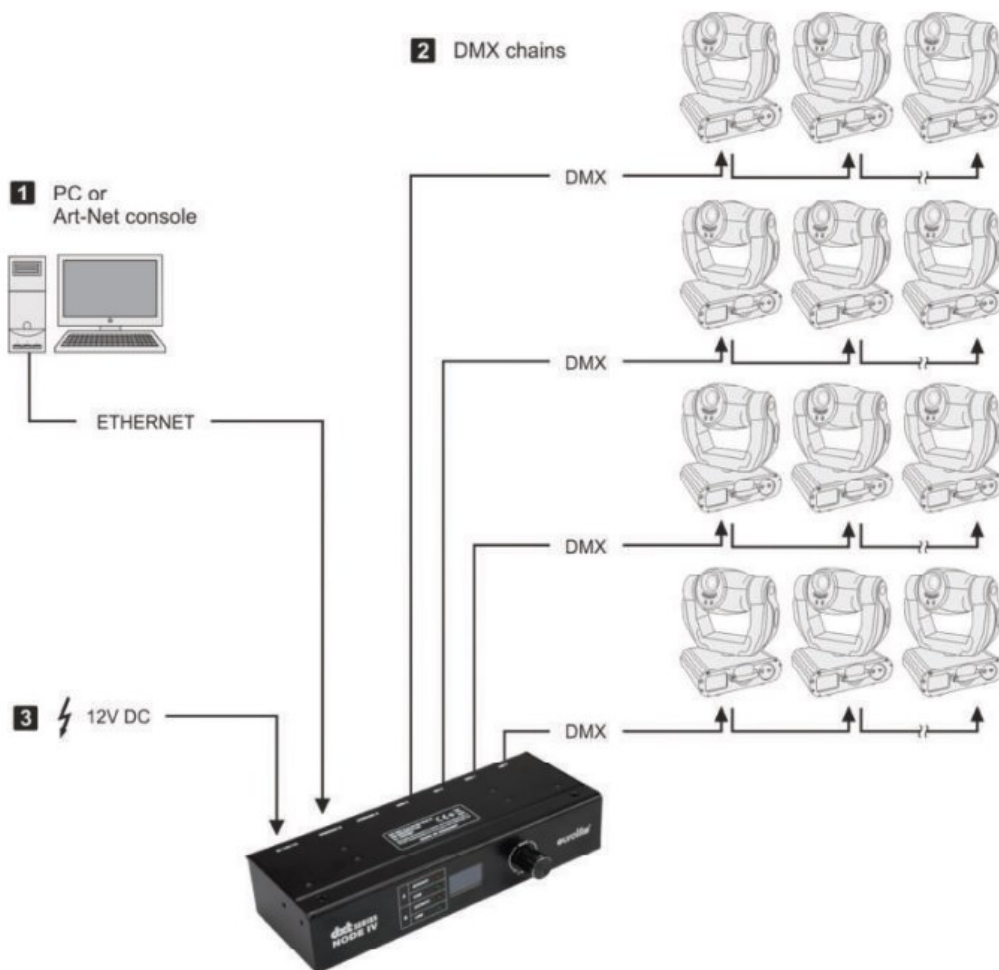
Network connection

Connect the device via one of its two Ethernet ports to your PC or switch. If you are using more than one device you can daisy chain them through the other Ethernet port or connect them star-shaped to an Ethernet switch. Use normal patch cables with RJ45 plugs and TIA-568A/B assignment. The opposing side should support at least 100BASE-TX, better 1000BASE-T. For the connection between two nodes no crossover cable is needed.

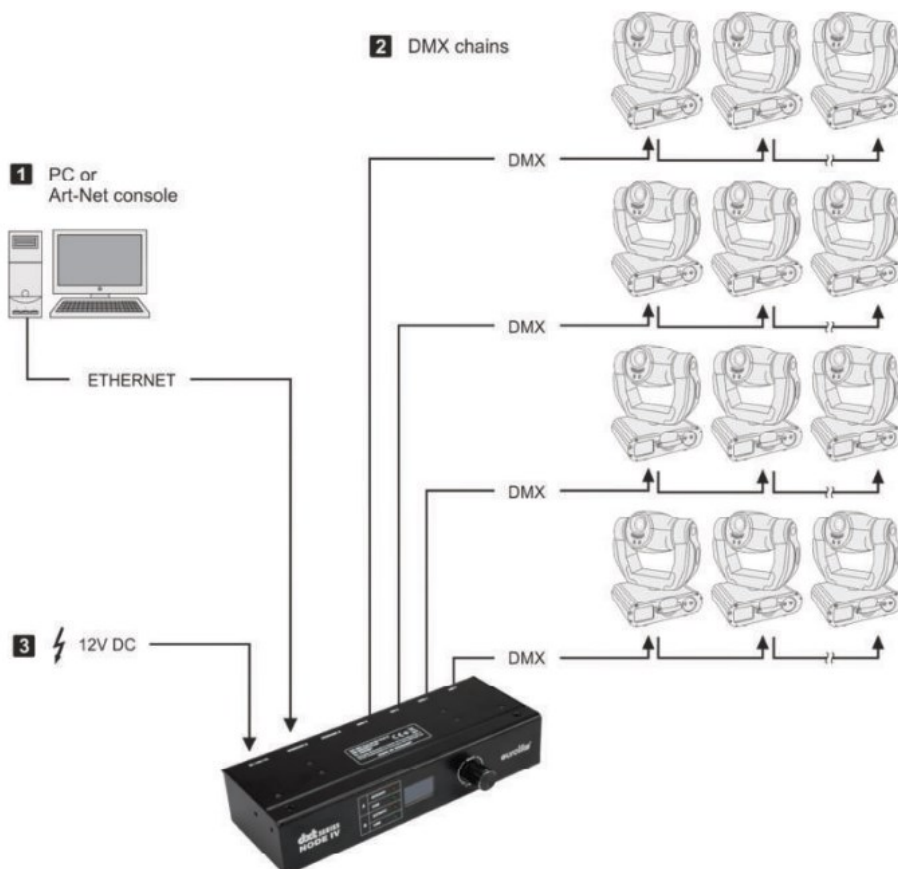
DMX connection

Connect your DMX512 devices to the DMX outputs.

Applications



MENU SETTINGS



The menu is structured as following:

- A highlighted cursor moves right and left through the pages or edits the parameter
- A underlined cursor moves up and down in the menu structure
- You can toggle the cursors by clicking the encoder button

Status menu

Status

IP:192.168.001.020

Node IV Short Name

CH 1: 00 **CH 3:** 02

CH 2: 01 **CH 4:** 03

Here all important information is displayed:

- IP address
- Art-Net node short name
- Universes of the ports

Note: You can't change anything on this menu page.

IP address and subnet mask

Network

IP Address

192.168.001.020

Net Mask

255.255.255.000

Use the encoder to cycle to the network menu. Pressing the encoder switches the cursor to an underscore. Now you can cycle to the desired parameter, which you can edit after pressing (highlighted in white). Press again to save and apply the parameter.

Frequently used values for the IP address are '2.0.0.xxx', '10.0.0.xxx', '192.168.178.xxx' or '192.168.1.xxx'. Avoid settings like 'xxx.xxx.xxx.255', because they will probably break your network! The netmask is usually something like '255.255.255.000'. It has to be the same on all devices, which want to communicate. In the IP address usually the first 3 blocks are identical across the network and the forth one is individual. The node reacts to Unicast, as well as Broadcast ArtDMX packets.

Art-Net parameters Net and Subnet

ArtNet Setup

Net: 00
Subnet 00

The Art-Net net and subnet are set for all outputs. The range is 0 – 15.

Please note: Some programs use the range 1-16! This is mapped 1 0 in the node, 2 1 in the node, and so on.

Setup channel 1 to 4

Channel 1

Type: OUT 40 Hz
Universe 00

Here you can choose the output type of the port: DMX512 40Hz, DMX512 20Hz or digital LEDs. The Art-Net universe has a range of 0-15.

Please note: Some programs use the range 1-16! This is mapped 1 0 in the node, 2 1 in the node, and so on. Channel 2, 3 and have the same configuration possibilities.

Configuration menu

Settings

Reset ? No

Language: English
Display time: 30s

The device can be reset to factory settings:

- **IP:** 192.168.178.20
- Subnet mask: 255.255.255.0
- Art-Net Net: 0
- Art-Net Subnet: 0
- Channel 1:
 - DMX Out 40 Hz
 - Universe 0
- Channel 2:
 - DMX Out 40 Hz
 - Universe 1
- Channel 3:
 - DMX Out 40 Hz
 - Universe 2
- Channel 4:
 - DMX Out 40 Hz
 - Universe 3

- Language: English
- Display timer: 30sec
- The menu language can be switched between German and English.
- The display and network LEDs can be automatically switched off. You can choose between: always on, 30sec and 60sec. The device stays fully operational but is significantly less noticeable in dark environments.

WEBSITE

The configuration website can be accessed with the device IP. It is displayed in the device status menu. Both devices (node and PC/console) have to be in the same subnet.

Node IV Konfiguration

Über diese Seite können sie ihren Art-Net Node IV konfigurieren

[Artikelseite](#)

Netzwerk:

IP Adresse:

Subnetz:

Art-Net:

Art-Net Long Name:

Art-Net Short Name:

Art-Net Net:

Art-Net Subnet:

Ports:

Port 1 Universe:

Port 2 Universe:

Port 3 Universe:

Port 4 Universe:

Port 1:

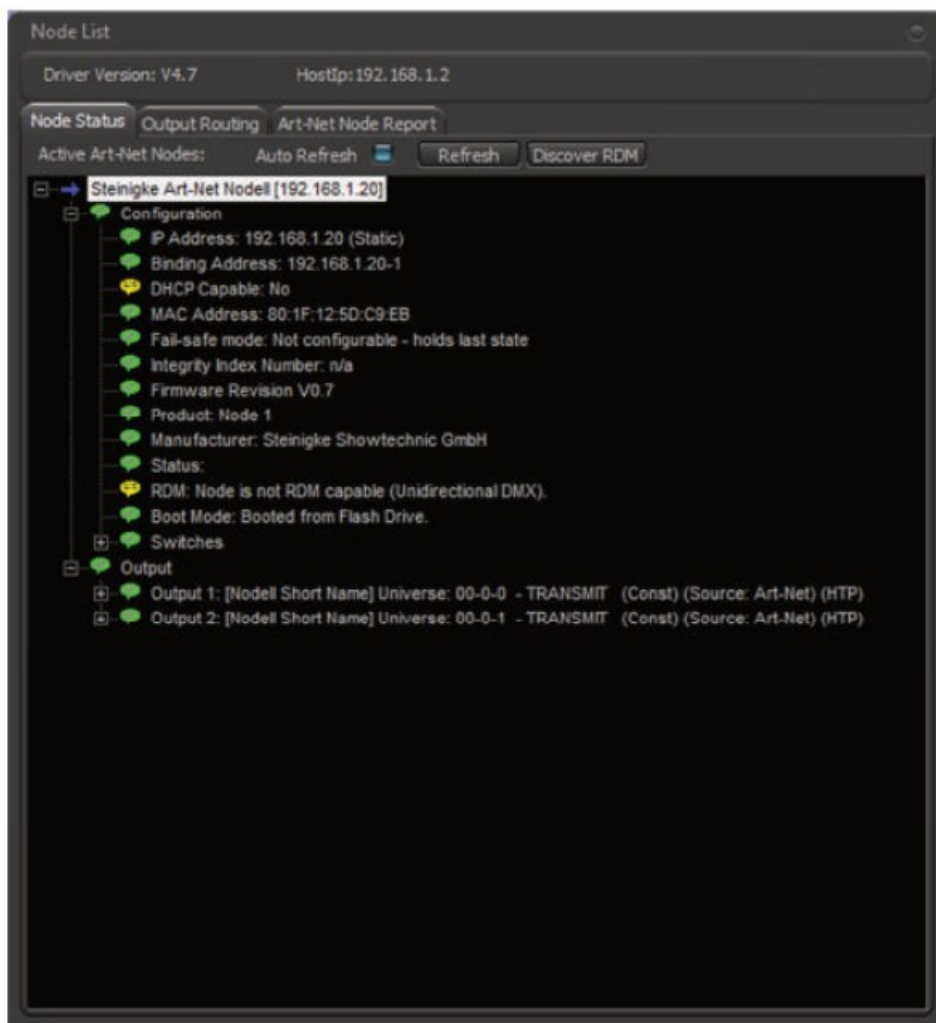
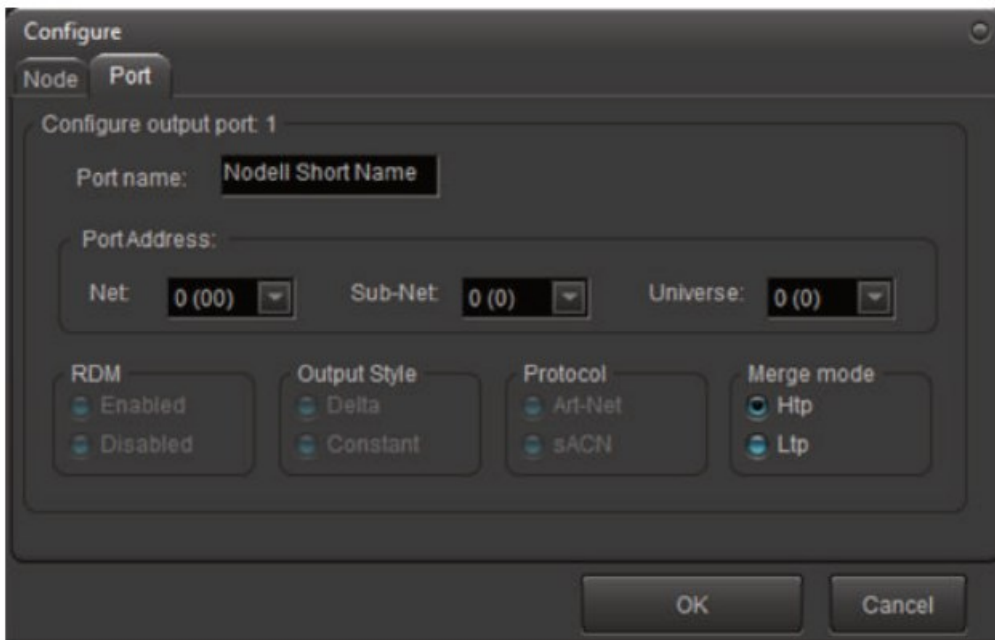
Port 2:

Port 3:

Port 4:

Node IV Firmware Version 000.007
Steinigke Showtechnic GmbH
Andreas-Bauer-Str. 5 D-97297 Waldbüttelbrunn
Hotline: +49 931 4061 600

ART-NET



With DMX Workshop you can configure:

- Art-Net long name (per node)
- Art-Net short name (per node)
- Art-Net Net (per node)
- Art-Net Subnet (per node)
- Art-Net Universe (per port)

- Art-Net Identify
- IP Address
- Subnet
- Node default settings

CLEANING AND MAINTENANCE

The product is maintenance-free, except for occasional cleaning. You can use a lint- free,slightly dampened cloth for cleaning. Refer all servicing to qualified personnel.

PROTECTING THE ENVIRONMENT

Disposal of old equipment



When to be definitively put out of operation, take the product to a local recycling plant for a disposal which is not harmful to the environment. Devices marked with this symbol must not be disposed of as household waste. Contact your retailer or local authorities for more information. Remove any inserted batteries and dispose of them separately from the product.



You as the end user are required by law (Battery Ordinance) to return all used batteries/ rechargeable batteries. Disposing of them in the household waste is prohibited. You may return your used batteries free of charge to collection points in your municipality and anywhere where batteries/rechargeable batteries are sold. By disposing of used devices and batteries correctly, you contribute to the protection of the environment.

TECHNICAL SPECIFICATIONS

Power supply:	12 V DC, 1 A via included PSU connected to 100-240 V AC, 50/60 Hz
Power consumption:	3 W
IP classification:	IP20
DMX channels:	Output 2048
DMX output:	4 x 3-pin XLR, NEUTRIK
Network connection:	Protocol: Ethernet TCP/IP via 2x RJ-45 etherCON, 10/100 Mbit/s Standard: IEEE 802.3u
Control:	Art-Net

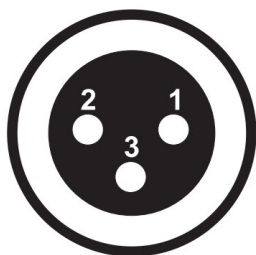
Color:	Black
Display type:	OLED display
Control elements:	Encoder
Status LED:	Signal, Link
Housing design:	Desktop console 1 U
	(19") 48.3 cm rack installation (optional)
Width:	20 cm
Height:	4.1 cm
Depth:	9.8 cm
Weight:	0.7 kg

Specifications are subject to change without notice due to product improvements.

Pin connection

DMX output

XLR mounting socket



1. ground
2. signal (-)

3. signal (+)

DMX input

XLR mounting plug



- 1. ground
- 2. signal (-)
- 3. signal (+)

Pin connection

No. 51786552: Omega Holder for DXT Series

No. 70064874: Mounting frame for DXT series 2x (19")

No. 70064875: Rack Brackets for DXT series

Experience Eurolite.

Product videos, suitable accessories, firmware and software updates, documentation and the latest news about the brand. You will find this and much more on our website. You are also welcome to visit our YouTube channel and find us on Facebook.



www.eurolite.de

You Tube www.youtube.com/eurolitevideo

f www.facebook.com/Eurolitefans



Documents / Resources



[eurolite DXT DMX Art-Net Node IV](#) [pdf] User Manual
DXT DMX Art-Net Node IV, Art-Net Node IV, DXT DMX Node IV, Node IV

References

- [Eurolite: Ihre Experten für Licht - Hersteller von Lichteffekten](#)
- [Artistic Licence - Lighting the way, leading the field](#)

Manuals+.